



“TripWire” Portable Wireless Motion Detector



1 Game

2

Motion Detector
triggered by game

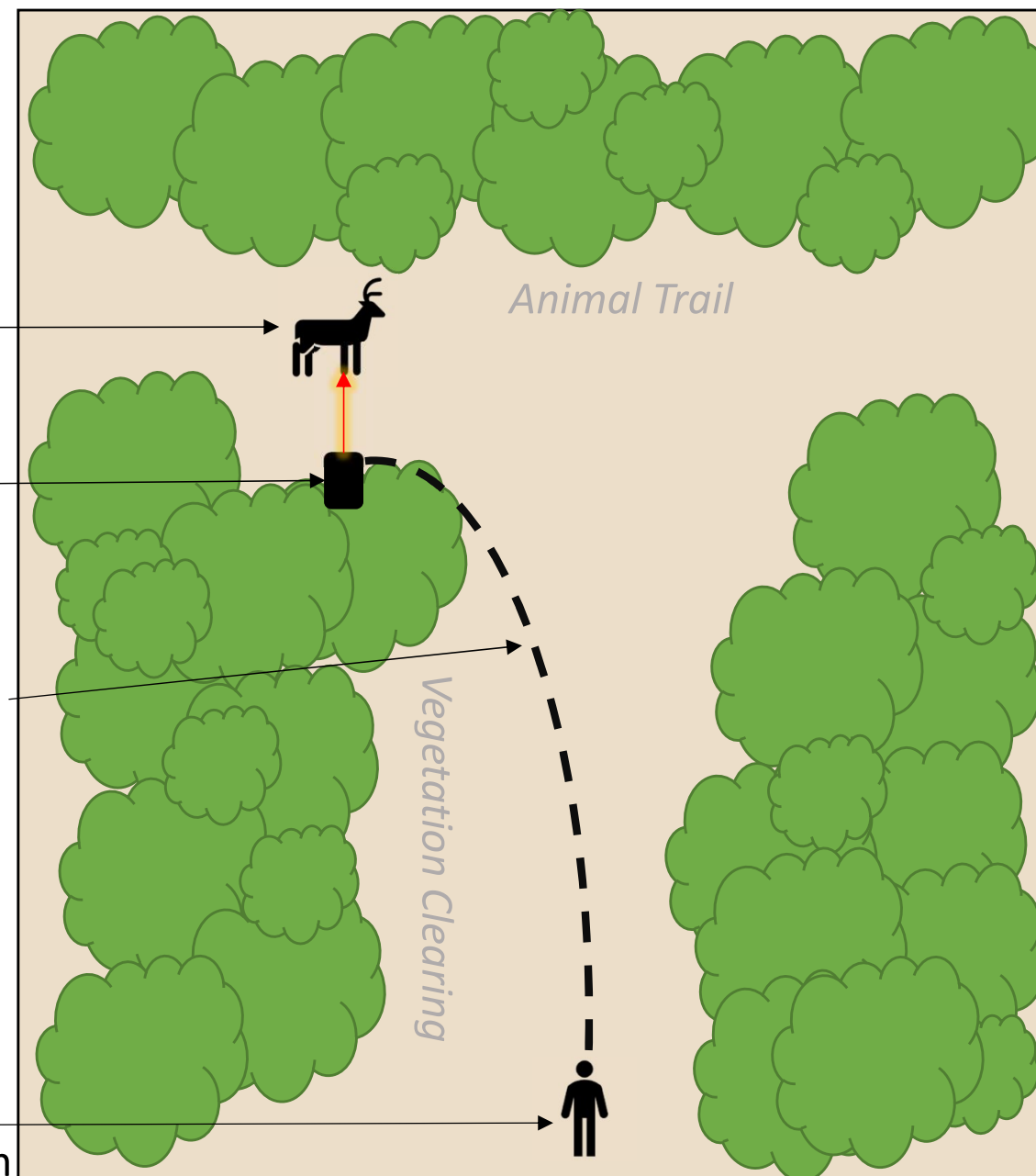
3 Wireless signal sent

4

LED indicator from
motion detector
signal on receiver
clipped to hunter's
visor flashes

5

Hunter readies firearm
or bow before animal appears





Tripwire Prototype Instructions

1. There is no on/off switch. The motion detector and receiver are on when the battery is inserted and should last between 48-72 depending on use. The transmitter is water resistant. The receiver fob is not in the prototype.

2. Use the tab to open the motion detector battery case and insert a CR123A battery then snap the battery case shut:

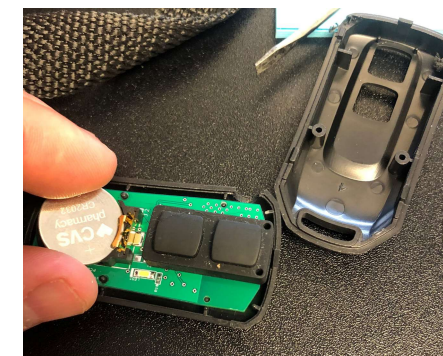


3. Pry the receiver fob open with a screwdriver:



CAUTION: Changes or modifications not expressly approved by Rugged Nature LLC could void your authority to operate the equipment.

4. Insert a CR2032 battery into the battery holder on the circuit board by inserting the edge of the battery into the copper lip first and then pressing down on the middle of the battery to snap it in. Snap the fob case back together:



5. Attach the motion detector onto a tree or other feature along an animal trail at a height that will likely see the center of the animal's mass. Ensure that the device is immobilized and won't slip or be moved by wind. Test the detector by stepping out of the 180 deg. motion view and wait 10 seconds. Then walk in front of the device with the fob and watch for the LED white light to flash on the back of the fob. Once the flash sequence has started, it will continue until you hit one of the fob buttons. The device must be clear. Once you've verified the motion detection, you are ready to hunt and receive an early warning signal.

This device complies with part 15 of the FCC Rules. Operation is subject to the following two conditions: (1) This device may not cause harmful interference, and (2) this device must accept any interference received, including interference that may cause undesired operation.

