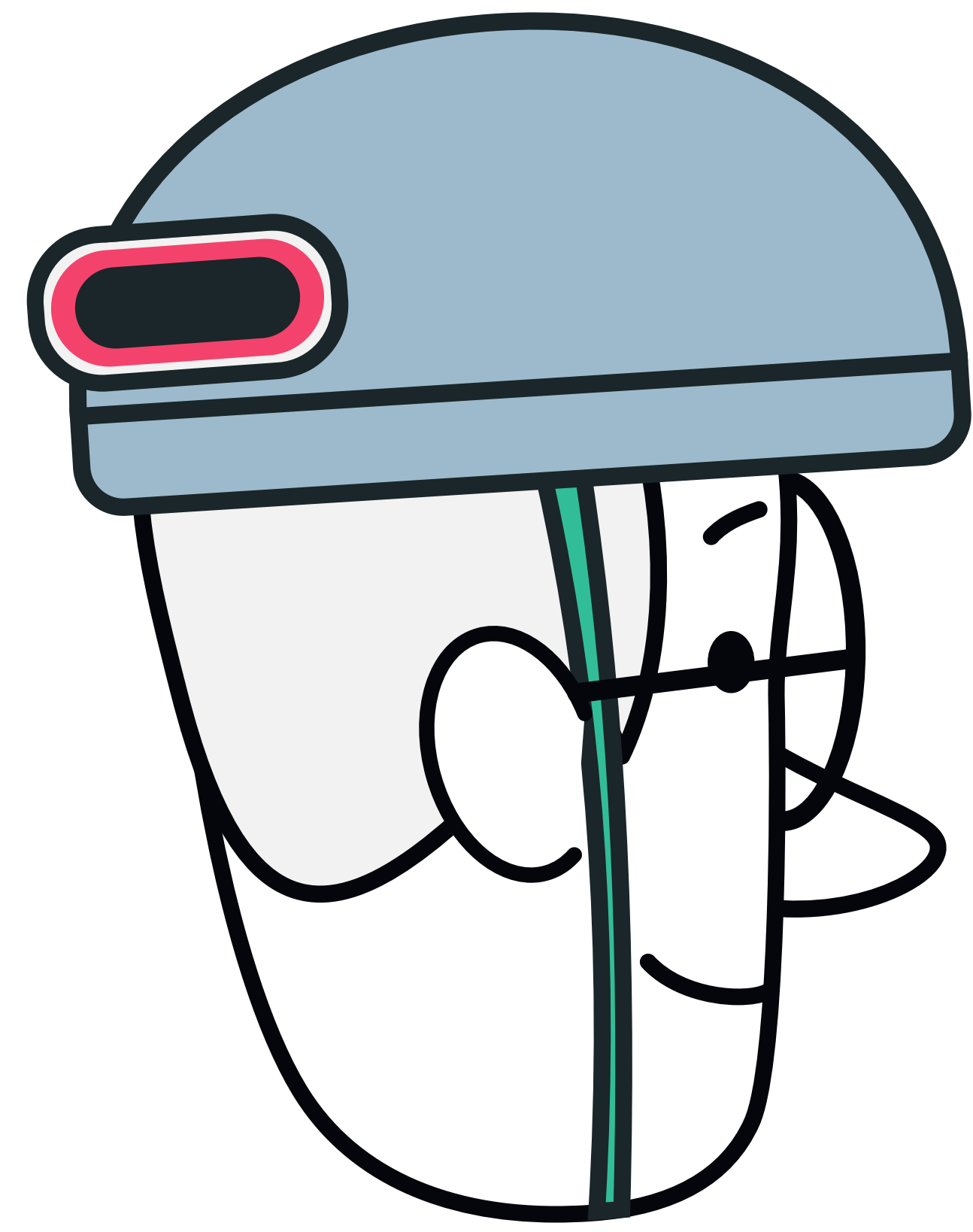


# USER'S GUIDE & WARRANTY

**COS****no**  
ride



# THE SMART LIGHT

FOR MORE SAFETY ON THE ROAD



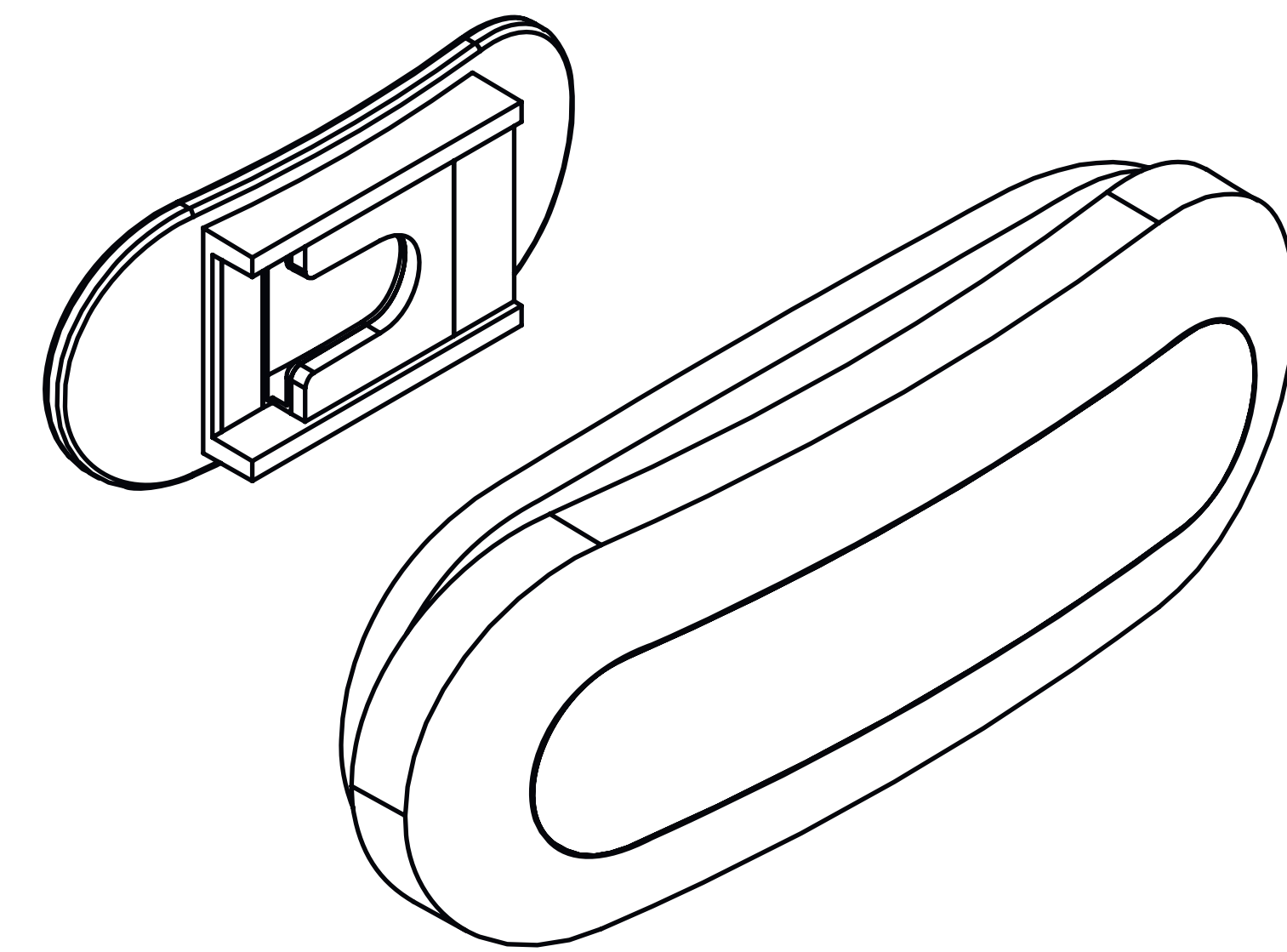
TUTORIAL • COSMO RIDE



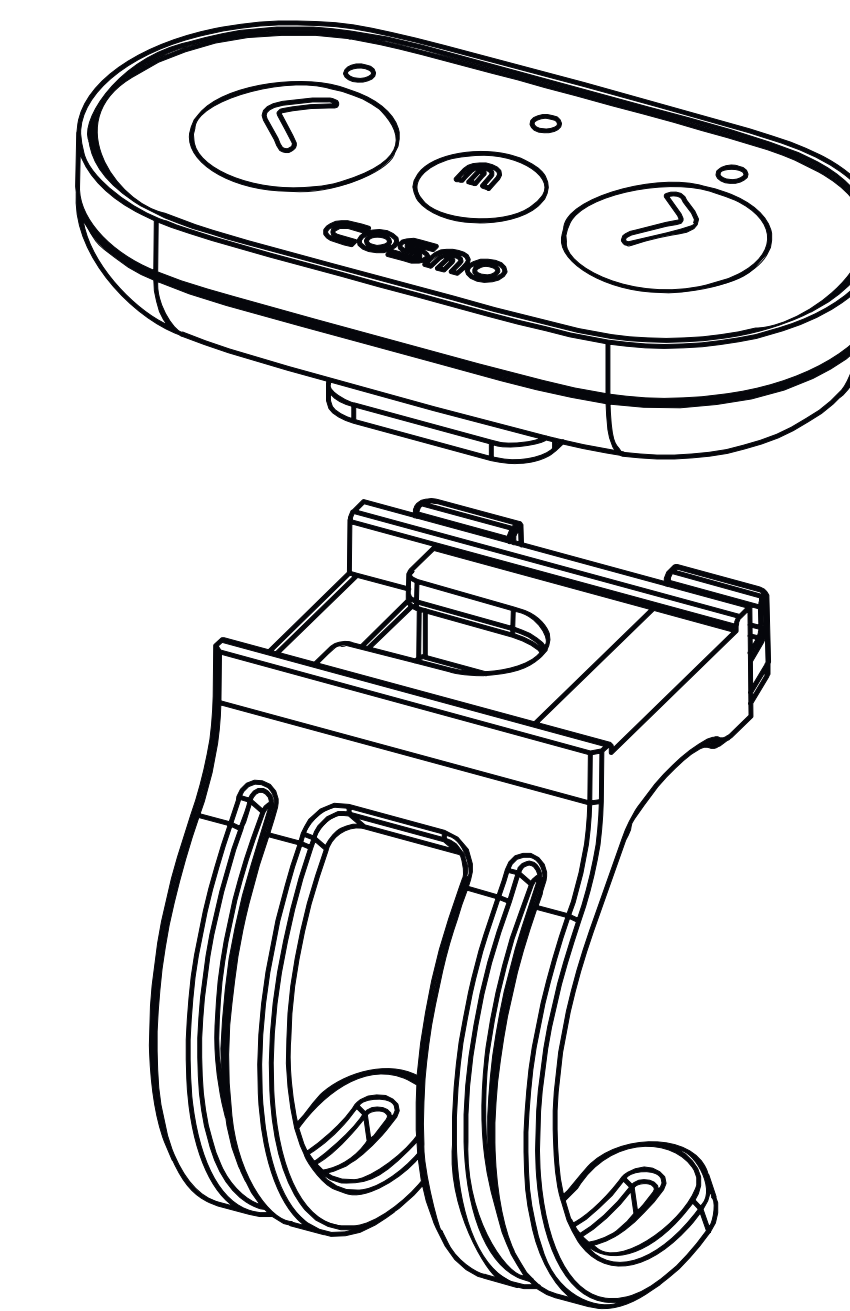
If you'd like a user's guide in another language, find it here: [cosmoconnected.com/en/user-guide](https://cosmoconnected.com/en/user-guide)



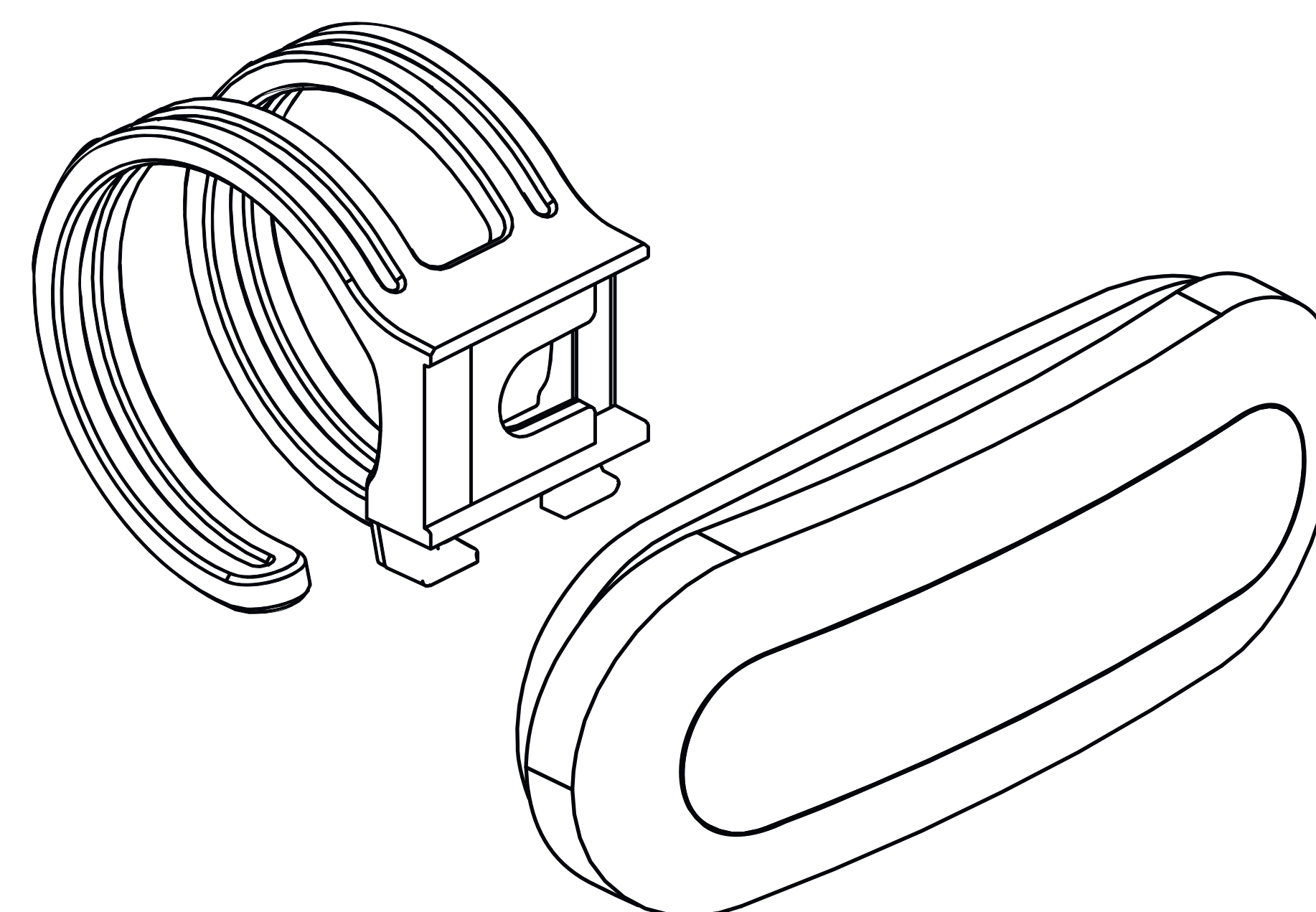
# How to attach the Cosmo and the remote control



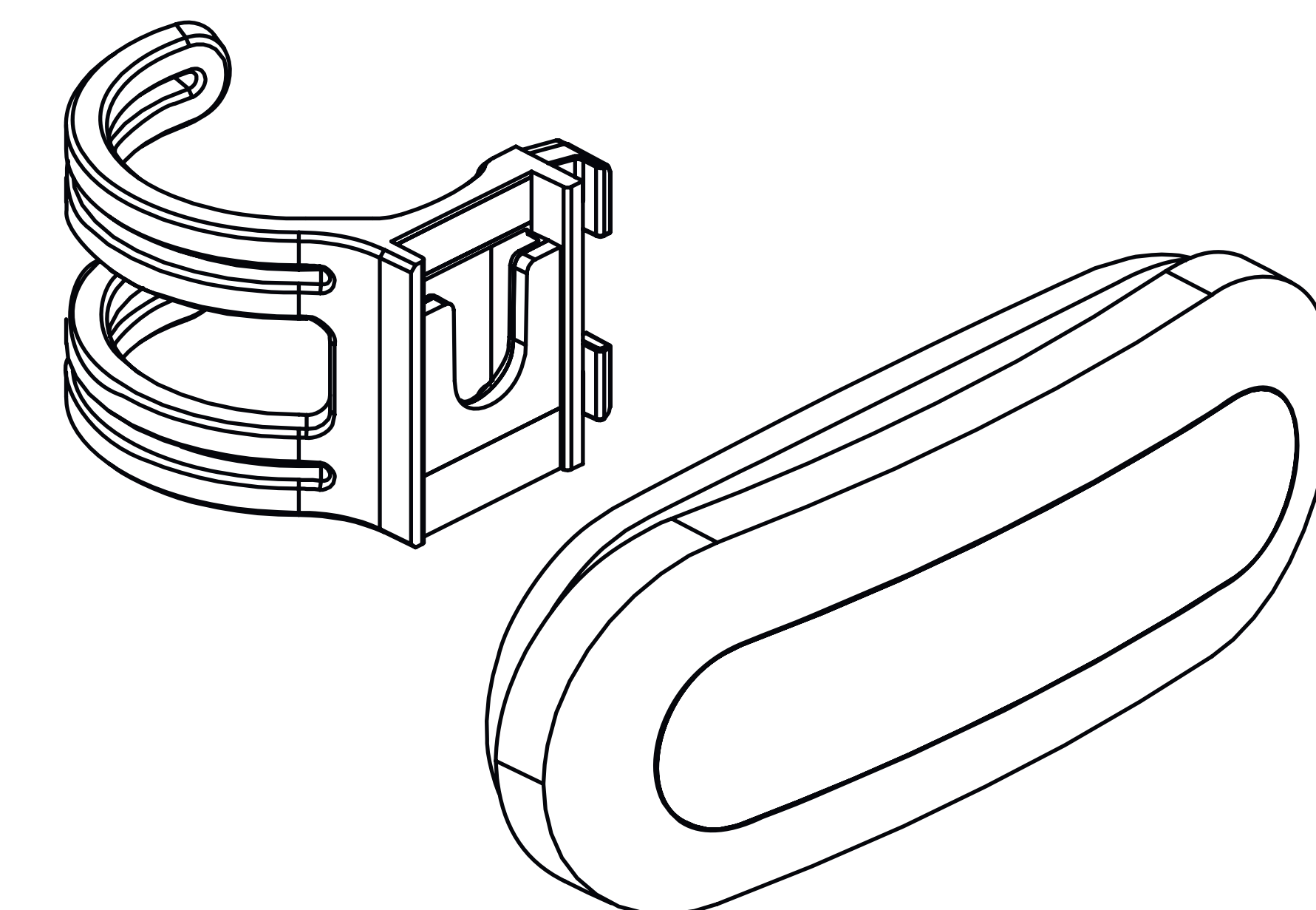
Attach the Cosmo to an urban helmet



Attach the remote control to the handlebar



Attach the Cosmo to a ventilated helmet



Attach the Cosmo to the tube saddle / seat post



# How to use the remote control

Left indicator light

Right indicator light



Middle button: hold down to turn off the Cosmo Ride or press quickly to change the lighting mode.  
There is one return light per light mode (details below mode 1, 2, 3, 4)

1.

Brake light  
(short blink)

2.

Position light  
& brake light  
(a long blink)

3.

Continuous lighting  
& warning light  
(a long blink)

4.

Warning light  
(short blink)

Note: Simultaneously pressing the two indicator lights  
will desynchronise the Cosmo Ride and remote control.

Cosmo Ride by Cosmo Connected is a removable light that can be attached to a helmet or a bike seat and connected to a mobile application. Its features include position lighting (continuous), indicator lights, warning lights and brake lights when installed under the seat. You can set all these modes through the app. The device combines visual safety, fall detection and emergency warnings (via SMS and/or email).

### **MINIMAL SETUP REQUIRED**

Cosmo Ride adapts to most bike/scooter helmets available on the market. To be able to enjoy all the features, you must have a smartphone with the following configuration:

IOS (Apple): Version 10 or higher.

Android: Version 5 or higher. IOS & Android: GSM + GPS + Bluetooth smart 4 SIM.

Even if it meets these requirements, your phone may not work reliably with Cosmo Ride and your remote control as the material and software may differ greatly from one phone to another; however, we've tested the product on an extensive list of phones. If you're not sure, please contact us.

### **ON/OFF**

Once charged, you can begin using your Cosmo Ride. To turn it on, just press the on/off button to the back of the device for 3 seconds. You can turn Cosmo Ride off in 4 ways: with the on/off button, via the app, with the remote control by pressing and holding down the central button (3 seconds) or after 2 min. of inactivity.

For more details, you may download the user's guide at our website: <https://cosmoconnected.com>.



## **BEFORE THE FIRST USE**

- 1.** Plug your Cosmo Ride in using the micro-USB cable that comes with it. The USB port is at the back of the device, the protective strip is at the back to the right. The Cosmo will turn on. The recharge indicator LED (red light on the left side) stays on until fully charged.
- 2.** Unplug it and you can use it.

## **THE MOBILE APP**

- 1.** Download the app from the Apple Store or Google Play Store and then start the app\*.
- 2.** Follow the instructions to connect your Cosmo Ride with your remote control.

\* Once installed, open the Cosmo Bike app and follow the instructions to create an account. If you already have one, enter your ID and password to log in. You can also create an account at our website [cosmoconnected.com](https://cosmoconnected.com). The Cosmo Ride app is free as is creating an account where you can add 3 emergency contacts to be notified by SMS and/or email if an incident is detected by your Cosmo Ride.

## **MAIN FEATURES**

**Indicator lights / Fall detection and warning lights\* / Position lights / Brake lights\*\*.**

These light modes can be manually enabled/disabled via the mobile app and/or via the remote control.\* The use of warning lights is regulated in each country; you must observe the laws in effect.

\*\*Attention: the "brake light" mode will not activate when the Cosmo is set to helmet mode.

## **WIRELESS TECHNOLOGY**

The Cosmo Ride is equipped with a Bluetooth 4.0 transmitter-receiver. (Low energy).

Transmitter power: -8.4 dBm/frequency bandwidth: 2400 to 2483.5.



## **BATTERY**

The Cosmo Bike is equipped with a 900 mAh battery that can be recharged with a 5 V micro-USB (included). A fully charged battery lasts around 180 minutes (2 hr 40 min.).

The battery autonomy is 8 hours with continuous lighting (may vary based on the use).

## **PRECAUTIONS REGARDING THE BUILT-IN BATTERY**

- Do not attempt to replace the battery in your Cosmo Ride. It is built-in and cannot be replaced.
- Charge the battery in accordance with the instructions provided in this guide.
- Only use the charger that comes with your product to charge the battery.
- Charge your Cosmo Ride using a computer, a powered docking station or certified power station.
- Do not attempt to open the built-in battery.

## **CHARGING YOUR COSMO RIDE**

Charge your Cosmo Ride using the micro-USB cable that comes with it. A LED indicator will light up to indicate it is charging and will turn off when fully charged. Check the battery level using the Cosmo Ride app.

## **RECOMMENDATIONS FOR USE**

Do not try to replace the battery or open the case or take your Cosmo Ride apart. Each of these actions will void the warranty and may pose safety risks. The substances contained in batteries may be harmful for the environment or cause injury if handled and disposed of inappropriately.

- Do not expose your Cosmo Ride to extreme temperatures (The Cosmo is designed to operate when uncharged: -20 °C to +60 °C, and while charging: 0 °C to +45 °C).



- Do not use any abrasive products to clean your Cosmo Ride or the accessories.
- Do not throw your Cosmo Ride onto a fire. The battery may explode.
- Charge the battery in accordance with the instructions provided in this guide. Only use a computer, a power source or a charger certified by a renowned testing laboratory with a charging cable authorised by COSMO CONNECTED.
- Do not charge your Cosmo Ride when wet.

### **ATTENTION**

Risk of explosion if the battery is replaced with an incorrect battery. The battery included with the Cosmo Ride must not be replaced by anyone other than COSMO CONNECTED or an authorised service centre. It must be recycled or disposed of separately from household waste as per the instructions. This product is not a toy. Do not let children or pets play with your Cosmo Ride. The product contains small parts which can be a choking hazard.

### **INFORMATION ON WASTE DISPOSAL AND RECYCLING**

Make sure you dispose of your product at a recycling centre. Each country and province has its own recycling centres for batteries and electronics. To find out where to dispose of your product, contact the waste management service in your area or the shop where you purchased the product. Do not throw your device into the household waste. The packaging and product must be disposed of in accordance with local regulations. Batteries must not be disposed of with municipal waste and must be separated for collection.



## **WEIGHT AND DIMENSIONS**

50 grams (Cosmo Ride only) 96x36x28.3 mm

## **POWER/VOLTAGE**

Nominal power: 5 V  – 900 mA

## **DECLARATION OF CONFORMITY**

This device was tested to ensure safety certification conformity in accordance with the essential requirements and other provisions of Directive 2014/53/EU. COSMO CONNECTED hereby declares this device complies with the essential requirements and other provisions of Directive 2014/53/EU (RED). The complete Declaration of Conformity for each product is available at our site [cosmoconnected.com](https://cosmoconnected.com)

COSMO CONNECTED is authorised to affix the CE marking to Cosmo Ride models CB-COB-001-Black which indicates its compliance with the essential requirements and other provisions of Directive 2014/53/EU. Designed in France/Made in China.

## **WARRANTY**

Cosmo Ride is covered by a limited commercial warranty of two (2) years.  
COSMO CONNECTED, 10 Rue de l'Amiral Hamelin 75016 Paris, France, guarantees COSMO CONNECTED BRAND products against material defects and labour when used in accordance with the recommendations published in the user's guide when they occur within two (2) years following the date of initial purchase by the end user of a new COSMO CONNECTED product from a professional ("Warranty Period").



The recommendations published particularly include technical specifications, safety instructions and the Cosmo Ride user's guide. COSMO CONNECTED does not guarantee the uninterrupted or error-free operation of Cosmo Ride. Products sold by COSMO CONNECTED comply with the regulations in effect in France and the performance thereof is compatible with non-professional use. The products supplied by COSMO CONNECTED fully benefit without any additional payment, irrespective of the consumer's right to cancel and in accordance with the law, from:

- A legal warranty of compliance for products allegedly defective, damaged, harmed or which do not correspond with the order;
- A legal warranty against hidden vices from a material, conception or manufacturing defect affecting the products delivered and making them unusable under the conditions and in accordance with the provisions below.

The legal warranty of compliance applies independently of any commercial warranty that may cover the product. Customers may decide to enforce the warranty against hidden defects in the product pursuant to article 1641 of the French Civil Code;

In such case, they may choose between a cancellation of the sale or a reduction in the purchase price pursuant to article 1644 of the French Civil Code. Please note that under the scope of the legal warranty of compliance, customers have two (2) years after delivery of the goods to enforce it against the seller; may choose between the repair or replacement of the product ordered, subject to cost conditions, as provided for by article L 217-9 of the French Consumer Code; providing proof of the existence of a compliance defect in the product is waived for the 24 months following delivery of the product.



In order to exercise their rights, customers must inform the company COSMO CONNECTED in writing of any non-conformity in the products or the existence of hidden vices within the periods indicated above and return the defective products in the conditions in which they were received with all accessory elements (packaging, documentation, charger, etc.). COSMO CONNECTED will reimburse, replace or repair the products or parts under the warranty which it believes are non-compliant or defective. Shipping costs will be reimbursed at the rate invoiced and the return shipping costs will be reimbursed upon submission of the corresponding receipts. Reimbursements for products deemed non-compliant or defective will be completed as quickly as possible and no later than fourteen (14) days after COSMO CONNECTED is notified of the compliance defect or hidden vice. Reimbursement will be made to the customer's bank account or by bank cheque payable to the customer.

**COSMO CONNECTED will not be liable in the following cases:**

- Non-respect of the laws in the country where the products are delivered, which must be verified by the customer;
- Improper use, usage that does not comply with the user's guide, faulty installation, use for professional purposes, negligence or a lack of maintenance by the customer, as well as in the event of normal product wear, an accident or force majeure;
- Faulty operation of the app connected to the product and, more generally, of the warning mechanism due to a lack of access to a telephone network (especially in a non-covered area or an inaccessible network), technical defects or consequences of an accident particularly, the total or partial destruction of the mobile terminal on which the app connected to the product is installed).



**Moreover, the warranty will not cover:**

- Repairs or replacements of parts due to normal wear;
- Any adaptation to the product in order to comply with technical or safety regulations applicable in a country other than one for which the product was designed and manufactured at the source; in other words, France;
- Deterioration or defects in the product resulting from:
  - improper product use or installation (use which is non-compliant with the intended use, installation or use that is non-compliant with the COSMO CONNECTED instructions or technical or safety standards in effect in the country where it is used, etc.);
  - Maintenance of the product which is non-compliant with COSMO CONNECTED instructions or negligence in the product maintenance;
  - Improper handling or improper use of the product (improper handling, falls, blows, etc.) or an inappropriate environment (exposure to humidity, excessive heat, contact with the sand or any other substance, inadequate electric power, etc.);
  - A modification or repair not completed by a service provider authorised by COSMO CONNECTED.

Furthermore, the customer hereby acknowledges that, based on the circulation and climate conditions, the product may not detect braking situations when set in seat mode and expressly accepts this.



MORE GENERALLY, THERE IS NO WARRANTY EXTENDING BEYOND THE WARRANTY INDICATED HEREIN AND ANY IMPLICIT WARRANTY INCLUDING IMPLICIT WARRANTIES OF CURRENT COMMERCIAL USE OR SUITABILITY FOR CERTAIN PURPOSES IS EXPRESSLY EXCLUDED. NO RESELLER HAS THE RIGHT TO MODIFY THE CONDITIONS AND LIABILITY CLAUSES LISTED ABOVE.

#### **FCC WARNING:**

This device complies with part 15 of the FCC Rules. Operation is subject to the following two conditions: (1) This device may not cause harmful interference, and (2) This device must accept any interference received, including interference that may cause undesired operation.

This equipment has been tested and found to comply with the limits for a Class B digital device, pursuant to Part 15 of the FCC Rules. These limits are designed to provide reasonable protection against harmful interference in a residential installation. This equipment generates uses and can radiate radio frequency energy and, if not installed and used in accordance with the instructions, may cause harmful interference to radio communications. However, there is no guarantee that interference will not occur in a particular installation. If this equipment does cause harmful interference to radio or television reception, which can be determined by turning the equipment off and on, the user is encouraged to try to correct the interference by one of the following measures:



- Reorient or relocate the receiving antenna
- Increase the separation between the equipment and receiver
- Connect the equipment into an outlet on a circuit different from that to which the receiver is connected
- Consult the dealer or an experienced radio/TV technician for help.

This device Cosmo Ride by Cosmo Connected complies with Part 15 of the FCC Rules.

Operation is subject to the following two conditions: (1) This device may not cause harmful interference, and (2) this device must accept any interference received, including interference that may cause undesired operation.

#### **IC Caution:**

**Radio Standards Specification RSS-Gen, issue 5**

#### **- English:**

This device contains licence-exempt transmitter(s)/receiver(s) that comply with Innovation, Science and Economic Development Canada's licence-exempt RSS(s). Operation is subject to the following two conditions:

This device may not cause interference.

This device must accept any interference, including interference that may cause undesired operation of the device.

#### **RF exposure statement:**

The equipment complies with IC Radiation exposure limit set forth for uncontrolled environment. This equipment should be installed and operated with minimum distance 20cm between the radiator and your body.

#### **- French:**

Cet appareil contient des émetteurs / récepteurs exemptés de licence conformes aux RSS (RSS) d'Innovation, Sciences et Développement économique Canada. Le fonctionnement est soumis aux deux conditions suivantes:

Cet appareil ne doit pas causer d'interférences.

Cet appareil doit accepter toutes les interférences, y compris celles susceptibles de provoquer un fonctionnement indésirable de l'appareil.

#### **Déclaration d'exposition RF:**

L'équipement est conforme à la limite d'exposition aux radiations de la IC établie pour un environnement non contrôlé. Cet équipement doit être installé et utilisé avec une distance minimale de 20 cm entre le radiateur et votre corps.



## NO UNAUTHORIZED MODIFICATIONS

47 CFR Section 15.21 CAUTION: This equipment may not be modified, altered, or changed in any way without signed written permission from COSMO CONNECTED.

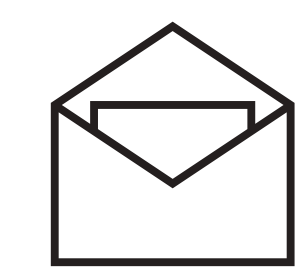
Unauthorized modification may void the equipment authorization from the FCC and will void the COSMO CONNECTED warranty. This device complies with FCC RF radiation exposure limits set forth for general population (uncontrolled exposure). This device must not be collocated or operating in conjunction with any other antenna or transmitter.

**ESP** Encuentre la guía del usuario y las condiciones de garantía en nuestro sitio:

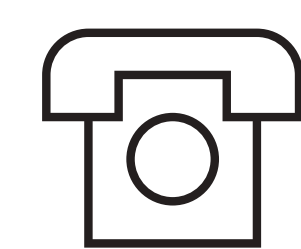
**ITA** Trova la guida dell'utente e le condizioni di garanzia sul nostro sito:

**DE** Das Benutzerhandbuch und die Garantiebedingungen finden Sie auf unserer Website:

**POR** Encontre o guia do usuário e as condições de garantia em nosso site:



info@cosmoconnected.com



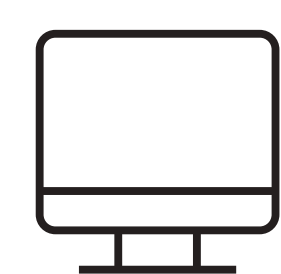
+33 1 83 81 26 74

( coût d'un appel local en France )



**COSMO CONNECTED**

10 Rue de l'Amiral Hamelin 75016 Paris, France



www.cosmoconnected.com