



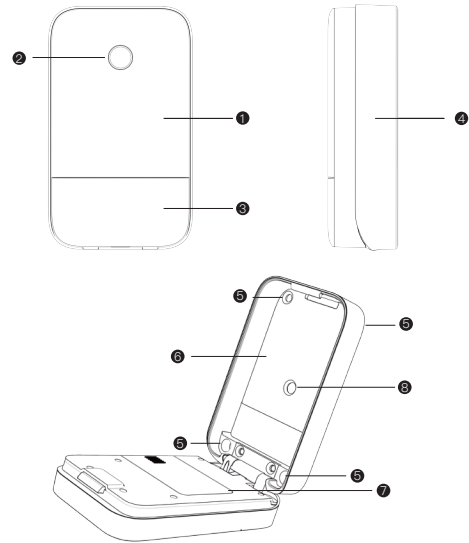
Quick Start Guide

Product Name: YEEUU K1 Smart Lock Box

Model Name: YCK3510

Brand Name: YEEUU

Hangzhou Ujia Technology Co., Ltd.



- | | |
|-----------------------|-------------------------|
| ① Box Cover | ② Fingerprint Area |
| ③ Touch Keyboard area | ④ Box Base |
| ⑤ Screw Hole | ⑥ Storage Spacce |
| ⑦ Battery Compartment | ⑧ Screw Hole of Cat Eye |

Accessories List

| | |
|--------------------------|----|
| Battery | x3 |
| Quick Start Guide | x1 |
| Drill Template | x1 |
| ① | |
| Self-Tapping Screw 15 mm | x4 |
| ② | |
| Expansion Bolt 30 mm | x4 |
| Expansion Screw 30 mm | x4 |
| ③ | |
| Flat Head Screw 120 mm | x1 |
| Hexagon Nut | x1 |
| Anti-Collision Nut | x1 |
| Big Gasket | x1 |
| ④(Optional Accessories) | |
| Shackle 83*46*6mm | x1 |
| Shackle Plate 121*71*8mm | x1 |
| M4 Screw 8mm | x4 |

Product Parameters

Identification Mode:

Fingerprint version:Fingerprint, Smartphone

Password version:Password, Smartphone

Fingerprint&Password version:Fingerprint, Password, Smartphone

Box Material: Aluminum alloy

Box Space: 98*68*11mm

Operation Voltage: 3.0-8.0 V

Emergency Power Supply Interface: TypeC

Battery Life: Up to 12 months (unlock 10 times a day)

Operation Temperature: -20℃ ~ +70℃

Speed of Opening Box by Fingerprint : < 1 s

Storage Capacity:

Fingerprint version:50pcs;

Password version:100pcs

Fingerprint&Password version:100pcs (fingerprint<50pcs)

Fingerprint Sensor: Semiconductor fingerprint recognition

Failed Opening Attempts: Disabled after 15 (by fingerprint) or 6 (by code) failed opening attempts

User Guide

Note: Make sure batteries are installed in the Battery Compartment.

Download the APP:

Login Google Play or App Store to search “YEEUU Smart”; Download “YEEUU Smart” APP.

Initial State:

At initial state any fingerprint can open the box and the Initial password is "123456".

Keypad Description:

The "√" is enter, "X" is cancel.

Led Status:

The green light indicates successful identification;

The red light indicates identification failure;

The blue light flashes to indicate binding to app;

The yellow light indicates low battery;

The red light flashes quickly to indicate the key box is locked.

Frequently Asked Question

Opening box by APP fails

Check whether the batteries are loaded and working properly; Check the networking status of mobile phone and perform operation again; Remove the batteries and re-load; Try to perform operation by approaching the box.

Opening box fails

Check whether the batteries are loaded and working properly;

Confirm whether the fingerprint and Password has been input by APP;

Remove the batteries and re-load; Ensure that the finger is dry.

Yellow light flashes when open the box

Low power, please replace 3 new AAA batteries in time.

Red light flashes when open the box

If the fingerprint identification failure exceeds 15 times or the password identification failure exceeds 6 times , the box will be locked, please use APP to open the box or try to unlock the box with fingerprint or password 15 minute later.

No response when open the box

Please check if the battery is loose; If the battery is dead, please replace the battery.

Login/registration cannot be performed normally

Check whether the network running properly.

How to reset your device

Login “YEEUU Smart” APP; Select the device to enter into page; Click the “Edit” icon at the upper right corner; Click “Remove Device” to reset the key box.



YEEUU Smart Lock Box
Model No. :YCK3510
Executive standard: GB4943.1-2011
Manufacturer: YEEUU Technology Co., Ltd.
Made in China



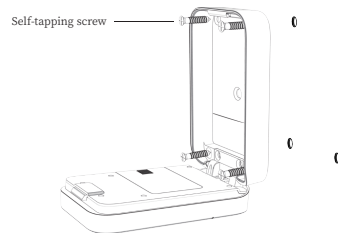
Installation

3 Installation methods are optional:

- ①Fix by self-tapping screw
- ②Fix by expansion screw
- ③Fix by cat eye bolt
- ④Fix by shackle

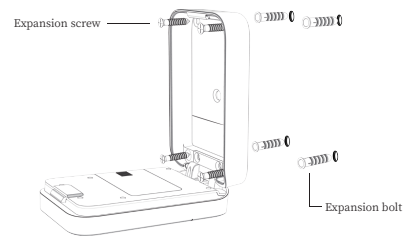
①Fix by self-tapping screw: Applicable to wooden door

- 1) Mark 4 circles on the wooden door in the assistance drill template;
- 2) Open the box cover; make the screw hole on box base align with the circles on the door, and screw in the self-tapping screw.



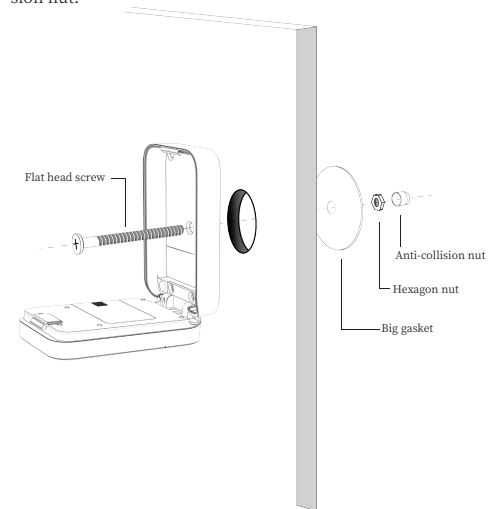
②Fix by expansion screw: Applicable to stone brick, cement wall

- 1) Mark 4 circles on the wall in the assistance drill template;
- 2) Punch holes at the marked position with electric drill (Ø 6 drill bit), the hole depth shall be 30 mm; and insert the expansion bolt;
- 3) Open the box cover; make expansion screw pass through the screw hole and screwed into the expansion bolt.



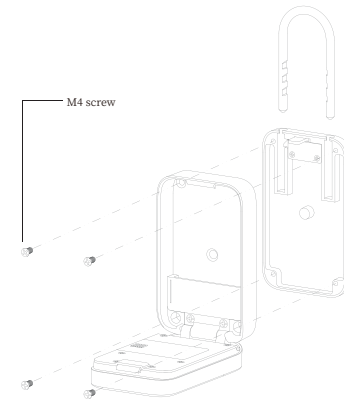
③Fix by cat eye bolt: Applicable to the door with cat eye

- 1) Take down the cat eye and open the box cover; make the flat head screw align with cat eye outside door, and make it pass through the box base and door;
- 2) Make the big gasket pass through the screw inside the door, and then screw down the hexagon nut and anti-collision nut.



④Fix by shackle: Applicable to the door with handle

- 1) Open the box cover; make magic shackle plate fixed on the box by M4 screws;
- 2) Put box under the handle and insert the magic shackle in box.



FCC Warning

a、 § 15.19 Labeling requirements.

This device complies with part 15 of the FCC Rules. Operation is subject to the following two conditions: (1) This device may not cause harmful interference, and (2) this device must accept any interference received, including interference that may cause undesired operation.

b、 § 15.21 Changes or modification warning.

Any Changes or modifications not expressly approved by the party responsible for compliance could void the user's authority to operate the equipment.

c、 § 15.105 Information to the user.

Note: This equipment has been tested and found to comply with the limits for a Class B digital device, pursuant to part 15 of the FCC Rules. These limits are designed to provide reasonable protection against harmful interference in a residential installation. This equipment generates uses and can radiate radio frequency energy and, if not installed and used in accordance with the instructions, may cause harmful interference to radio communications. However, there is no guarantee that interference will not occur in a particular installation. If this equipment does cause harmful interference to radio or television reception, which can be determined by turning the equipment off and on, the user is encouraged to try to correct the interference by one or more of the following measures:

- Reorient or relocate the receiving antenna.
- Increase the separation between the equipment and receiver.
- Connect the equipment into an outlet on a circuit different from that to which the receiver is connected.
- Consult the dealer or an experienced radio/TV technician for help.

The device has been evaluated to meet general RF exposure requirement. The device can be used in portable exposure condition without restriction.