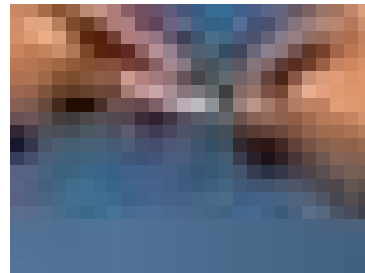
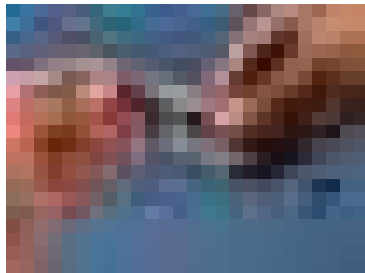




1. Inserting the battery

Open the cap on the back of the transmitter and insert the battery deeply into the battery hole with the pointed end facing forward.



2. Fishing rod fastening

- 1 First connect the three holes on the non-handled side of the silicone rubber to the hooks on the main body.
- 2 Wrap the pole of the fishing rod with rubber and attach the remaining three holes with handles to the hooks on the opposite side.
- 3 Since the rubber is tough, hold the handle and pull strongly to hang it.



3. 8-Shaped ring fastening to prevent line tangles

- 1 Before inserting the fishing line into the fishing rod hook, fasten the transmitter first.
- 2 Hang the 8-Shaped ring as shown in the picture.
- 3 Finish by passing the fishing line as shown in the picture.



Velcro fastens the transmitter to the middle of the fishing rod to reduce sensitivity.

- 1 Use when the wind is strong and you are shaking too much.
- 2 For detecting the strong bite of large fish species.

For instructions on how to use scan the QR code and check the video.



This equipment has been tested and found to comply with the limits for a Class B digital device, pursuant to part 15 of the FCC Rules. These limits are designed to provide reasonable protection against harmful interference in a residential installation. This equipment generates, uses and can radiate radio frequency energy and, if not installed and used in accordance with the instructions, may cause harmful interference to radio communications. However, there is no guarantee that interference will not occur in a particular installation. If this equipment does cause harmful interference to radio or television reception, which can be determined by turning the equipment off and on, the user is encouraged to try to correct the interference by one or more of the following measures:

- Reorient or relocate the receiving antenna.
- Increase the separation between the equipment and receiver.
- Connect the equipment into an outlet on a circuit different from that to which the receiver is connected.
- Consult the dealer or an experienced radio/TV technician for help.

Any changes or modifications not expressly approved by the party responsible for compliance could void the user's authority to operate this equipment. This transmitter must not be co-located or operating in conjunction with any other antenna or transmitter.

This equipment complies with FCC radiation exposure limits set forth for an uncontrolled environment. This equipment should be installed and operated with minimum distance 20cm between the radiator and your body.

The antenna(s) must be installed such that a minimum separation distance of at least 20cm is maintained between the radiator(antenna) and all persons at all time. This device must not be co-located or operating in conjunction with any other antenna or transmitter.

This device complies with Part 15 of the FCC Rules.
Operation is subject to the following two conditions:

- (1) This device may not cause harmful interference, and
- (2) this device must accept any interference received, including interference that may cause undesired operation