

# Bluetooth Microwave Fixture Sensor

# GEBC

## SPECIFICATION

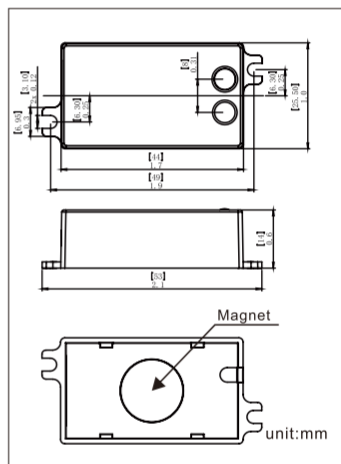
The ANT-9-BLE-GE uses microwave motion detector architecture technology for improved detection coverage for high bay applications.

## OVERVIEW

- Microwave sensor.
- Bluetooth® SIG mesh.
- High-End Trim, Zoning, Continuous Bi-level Dimming.
- LED Motion indicator.
- Mounting height up to 40 ft .
- 360° coverage pattern.
- Low Voltage connector.
- Technology Partner GEBC.

## FEATURES AND BENEFITS

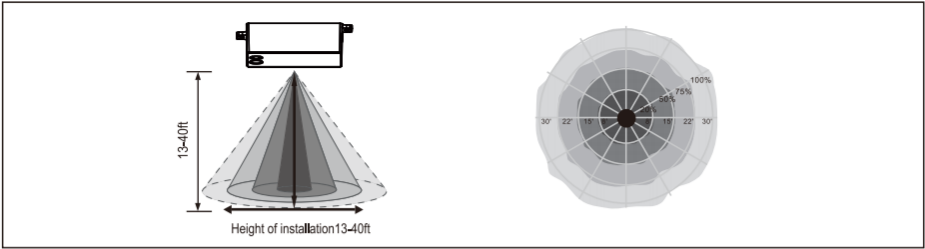
- Bluetooth to 0-10V signal converter, Bluetooth® mesh network.
- Built-in 20mA 0-10V signal output.
- Mesh network, which has a much longer control distance, transmits received signals to neighboring devices.
- All devices on 0-10V line are broadcast controlled by mobile application.
- In typical outdoor environment, the typical range for wireless communication is 131ft(40m).
- Actual range is dependent on field installation.
- Remote reset(press "RESET"+" ON/OFF" buttons in sequence).
- On-board antenna.



## TECHNICAL DATA

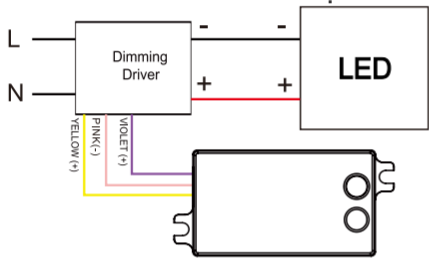
Motion Sensor	Microwave sensor
Input Power	10-14VDC, >50mA
Control Output	0-10V, max 25mA sinking current
HF System	5.8GHz±75MHz
Transmission power	<0.2mW
Mounting height	40ft(12m) Max.
Detection angle	360°
Operating temperature	-40°C~70°C
IP rating	20
Max Bluetooth Range	131ft(40m)
Warranty	5years

# SENSOR COVERAGE

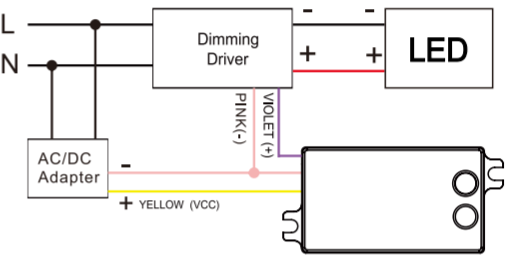


# WIRING DIAGRAMS

ANT-9-BLE-GE wiring with  
dimming ballast or LED driver



ANT-9-BLE-GE Wiring by AC/DC Adapter  
with dimming ballast or led driver.



# FCC STATEMENT

This equipment has been tested and found to comply with the limits for a Class B digital device, pursuant to Part 15 of the FCC Rules. These limits are designed to provide reasonable protection against harmful interference in a residential installation. This equipment generates uses and can radiate radio frequency energy and, if not installed and used in accordance with the instructions, may cause harmful interference to radio communications. However, there is no guarantee that interference will not occur in a particular installation. If this equipment does cause harmful interference to radio or television reception, which can be determined by turning the equipment off and on, the user is encouraged to try to correct the interference by one or more of the following measures:

- Reorient or relocate the receiving antenna.
- Increase the separation between the equipment and receiver.
- Connect the equipment into an outlet on a circuit different from that to which the receiver is connected.
- Consult the dealer or an experienced radio/TV technician for help.

This device complies with part 15 of the FCC Rules. Operation is subject to the following two conditions:

(1) This device may not cause harmful interference, and (2) this device must accept any interference received, including interference that may cause undesired operation.

Changes or modifications not expressly approved by the party responsible for compliance could void the user's authority to operate the equipment

## ⚠ RF warning for Mobile device:

This equipment complies with FCC radiation exposure limits set forth for an uncontrolled environment. This equipment should be installed and operated with minimum distance 20cm between the radiator & your body.

# ORDERING INFORMATION

ANT-9-BLE-GE

Bluetooth Microwave Fixture Sensor



V1.0