

OPERATING INSTRUCTIONS (CONT.)

B.) The air purifier is equipped with an air sensor that monitors the quality of your air. The monitor will test the air quality and automatically adjust the fan speed to remove air contaminants. The display is equipped with LED lights to notify you of the air quality.

Light	Blue	Yellow	Orange	Red
Air Quality	Good: <50ug/m3	Moderate: 50-100ug/m3	Lightly polluted: 100-150ug/m3	Heavily polluted: ≥150ug/m3
Speed (Under Auto Mode)	Level 1 (Low)	Level 2 (Medium)	Level 3 (High)	Level 4 Turbo



Timer button:

Press the Timer button to select the desired operating time and the display will show the time set. Remaining period of timer will be displayed by decrements of 1 hour.

1st press = 1H

2nd press = 2H

.....

12th press = 12H

13th press = Display switches back to the settings before the timer action.

14th press = Returns to 1H and starts the cycle over.

The unit will stop when the selected operating time has elapsed.

NOTE: Press and hold for 3 seconds to deactivate timer.



Sleep button:

Press the Sleep button to activate Sleep mode. The sleep icon will flash for 5 seconds before the unit enters into sleep mode. Sleep indicator lights up, while all other indicators and the light will be turned off automatically. Unit will stay at current settings chosen. To turn off sleep mode, press any button.

NOTE: If the timer period ends under sleep mode, the device will be turned off. Press the power button to restart the unit.

OPERATING INSTRUCTIONS (CONT.)



UV-C button:

Press the UV-C button to turn on/off the UV-C light.



Filter Reset & Filter Life / PM2.5 Display button:

A.) When it is time to replace the filter, the filter reset indicator will light up solid red. Replace the filter, then press and hold the filter reset button for 3 seconds to reset it. The red light will turn off after reset.

B.) If you want to replace the filter before the filter life ends, press and hold the power button for 3 seconds to reset the filter in advance. The filter reset indicator will flash for 20 seconds, during which you can press and hold the button again to reset the filter. If you do not press and hold the button again, the indicator will go off after 20 seconds.

C.) Unit defaults to display of filter life when first used and then memorizes the last display. Press the button to switch between filter life display and PM2.5 display.

1st press = continuous display of PM2.5 value

2nd press = continuous display of filter life



Child Lock button:

Press and hold for 3 seconds to activate/deactivate the Child lock. If any button is pressed when child lock is activated, the icon will flash 3 times as indicator for locked status.

NOTE: When the device is not in use, turn it off and unplug it. The device has a memory function that will save the previous settings of UV-C, Speed, and Auto before the device is turned off or unplugged.

PURE ENRICHMENT APP SETUP

1. Download the Pure Enrichment app by searching for Pure Enrichment in the App Store® (iOS devices), on Google Play (Android™ devices), or by scanning the following QR code.



2. Turn on your smartphone's Wi-Fi and Bluetooth to connect.
3. Open the Pure Enrichment app. Log In or Sign Up.
4. Follow the in-app instructions to set up your smart air purifier
5. For additional instructions on app setup, visit: pureenrichment.com/products/purezone-turbo-smart-air-purifier or scan the QR code below.



Connect with Amazon Alexa or Google Assistant

You can use the Pure Enrichment app to connect your smart air purifier to Amazon Alexa or Google Assistant. Please follow the in-app instructions to set up your voice assistant.

NOTE: You must create your own Pure Enrichment account to access voice assistants.

ATTRIBUTIONS

- Google, Android, and Google Play are trademarks of Google LLC.
- App Store® is a trademark of Apple Inc.
- Wi-Fi is a registered trademark of Wi-Fi Alliance®.
- iOS is a registered trademark of Cisco Systems, Inc. and/or its affiliates in the United States and certain other countries.
- The Bluetooth® word mark and logos are registered trademarks owned by Bluetooth SIG, Inc. and any use of such marks by Pure Enrichment is under license. Other trademarks and trade names are those of their respective owners.

ALEXA/GOOGLE ASSISTANT DEVICE VOICE COMMANDS

Topic	Command
Power On/Off	Alexa, turn on/off PureZone Turbo.
	Hey Google, turn on/off PureZone Turbo.
Mode Settings	Alexa, set PureZone Turbo to sleep/auto/manual mode.
	Alexa, what is the mode on PureZone Turbo?
	Hey Google, set mode on PureZone Turbo to sleep/auto/manual.
Speed Settings	Alexa, what is the fan speed on PureZone Turbo?
	Alexa, set PureZone Turbo fan speed to one/two/three/four.
	Hey Google, what is the PureZone Turbo speed?
	Hey Google, set PureZone Turbo to level 1/level 2/level 3/level 4.
Child lock ON/OFF	Alexa, turn on/off child lock on PureZone Turbo.
	Alexa, is child lock on for PureZone Turbo?
	Hey Google, turn on/off child lock on PureZone Turbo.
	Hey Google, is PureZone Turbo child lock on?
Ultraviolet ON/OFF	Alexa, turn on/off ultraviolet on PureZone Turbo.
	Hey Google, turn UV on/off on PureZone Turbo.

FILTER REPLACEMENT

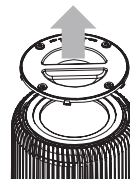
When it is time to replace the filter, the filter reset indicator will light up solid red.

NOTE: The 4-in-1 filter will last approximately 6 months, depending on usage and environment conditions. It's important to maintain and change the filter to continue to optimize the performance of the air purifier. To purchase the replacement filter (Model: PECYLFIL), visit pureenrichment.com.

1. Turn off and unplug the device.
2. Flip the unit to access the base.



3. To open, place both thumbs on opposite sides of handle and twist counterclockwise

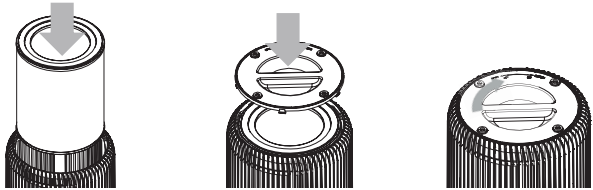


4. Lift base off of the unit.



5. Remove and dispose of the used filter.

FILTER REPLACEMENT (CONT.)



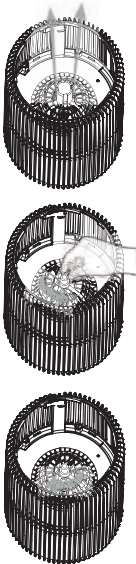
- 6. Insert new filter. Secure, then return the base and twist RIGHT to lock.
- 7. Reset the filter indicator by pressing and holding the Filter Reset button for 3 seconds. The red indicator light will turn off.

NOTE: When the filter expires, the system will send notification to remind the user to replace the filter. When the filter is not installed or the bottom cover is opened, the unit will shut off automatically.

UV-C BULB REPLACEMENT

Replace the bulb according to the directions below.

- 1. The UV-C bulb is located in a compartment in the center of the purifier. To access, first follow the instructions to remove the filter.
- 2. After removing the filter use a screwdriver to remove two screws and detach the UV bulb enclosure.
- 3. Hold the unit in place with one hand. Locate the bulb and reach into the cylinder.
- 4. Turn the bulb in a counter-clockwise direction (left) to loosen from the socket.
- 5. Take new bulb and screw into unit using a clockwise motion. Wipe off fingerprints with a dry cloth.
- 6. Reassemble by reversing steps 1&2. Turn the unit back on.



NOTE: DO NOT look directly at the UV light when UV-C is turned on.

CLEANING & MAINTAINING THE AIR PURIFIER

- 1. Unplug before cleaning.
- 2. Wipe the outside of the air purifier with a soft, dry cloth. If needed, wipe the housing with a damp cloth, then immediately dry.
- 3. Vacuum the inside of the air purifier.
- 4. Do not clean with abrasive chemicals or flammable cleaning agents.

CLEANING & MAINTAINING THE FILTER

The filter should be cleaned once a month to increase the efficiency and extend the life of your filter. Clean the inside and outside of the filter using a soft brush or vacuum hose to remove hair, dust, and large particles. Do not clean the filter with water or other liquids.

NOTE: The filter is not washable. DO NOT wet the filter when cleaning.

TROUBLESHOOTING

Problem	Solution
Unit is not powering on	<p>Check to make sure PureZone Turbo is properly plugged in and the electrical outlet is working.</p> <p>Check that the base is latched firmly in place.</p> <p>Check that the filter is firmly in place.</p>
Decreased air flow	<p>Check that the filter is clean, replace if necessary.</p> <p>Check for any obstructions in the air inlet and outlet.</p>
Excessive noise	<p>Check for and remove any foreign objects in contact with the fan.</p> <p>The filter may be clogged and ready for replacement, replace if necessary.</p> <p>Uneven positioning. Reposition on an even surface.</p>

If your problem is not resolved by the solutions listed above, contact Pure Enrichment for assistance by emailing help@pureenrichment.com.

PUREENRICHMENT APP TROUBLESHOOTING

My smart air purifier isn't connecting to the PureEnrichment app.

- Make sure your phone has Bluetooth® turned on and is not currently connected to another Bluetooth device. During the setup process, you must be on a secure network. Confirm that the network is working correctly.
- Make sure the Wi-Fi password you entered is correct.
- There should be no spaces at the beginning or end of the password.
- Test the password by connecting a different electronic device to the router.
- If you're manually typing in the SSID and password, double check that both are entered correctly.
- Try moving your air purifier closer to the router. Your phone should be as close as possible to your air purifier.
- Your router may need to be at a higher location, away from obstructions.
- Make sure your air purifier and router are away from appliances (such as microwave ovens, refrigerators, electronic devices, etc.) to avoid signal interference.
- If you're using a VPN, make sure it's turned off while setting up your air purifier.
- Disable portal authentication for your Wi-Fi network. If portal authentication is enabled, the air purifier will not be able to access your Wi-Fi network, and setup will fail.

NOTE: Portal authentication means that you need to sign in to your Wi-Fi network through a web page before you can use the Internet.

My air purifier is offline.

- Make sure the air purifier is plugged in and has power, then refresh the PureEnrichment menu by swiping down on the screen.
- Make sure your router is connected to the internet and your phone's network connection is working.
- Delete the offline air purifier from the PureEnrichment app and reconfigure the air purifier with the PureEnrichment app.

PUREENRICHMENT APP TROUBLESHOOTING

NOTE: Power outages, internet outages, or changing Wi-Fi routers may cause the air purifier to go offline.

If your problem is not resolved by the solutions listed above, contact Pure Enrichment for assistance by emailing help@pureenrichment.com.

WARRANTY

PureZone Turbo comes with an industry-leading 5 Year Warranty that begins on the date of purchase.

The warranty applies to the air purifier and necessary parts and labor relating thereto. The warranty does not apply to damage resulting from failure to follow the operating instructions, accidents, abuse, alterations, or disassembly by unauthorized individuals.

PRODUCT REGISTRATION

To ensure your full warranty, and to receive product updates and streamlined customer support, remember to register your product at:

pureenrichment.com/productregistration

ARE YOU 100% SATISFIED?

If you have product questions or concerns, don't hesitate to contact us directly at:

Email: help@pureenrichment.com

Phone: (657) 275-3737

(Available Monday-Friday, 8am-5pm PST)

Pure Enrichment has an award-winning warranty, exchange, and customer service program that guarantees hassle-free solutions to any issue you might have within 24 hours!



Santa Ana, CA 92704
pureenrichment.com

REV: 10.29.21