



Solar-Powered
Wireless Security Camera Kit



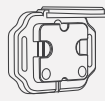
Catalogs

01	What's Included.....	P01
02	Product Overview	P02
03	HomeBase (M4B)	P04
04	Download the App.....	P05
05	Setting up the System	P05
06	Accounts Registration	P06
07	Connecting the HomeBase.....	P07
08	Turn on the Camera	P08
09	Pair Up the HomeBase.....	P09
10	Mounting the Camera.....	P11
11	Solar Panel Installation	P15
12	How to Find the SN Number?.....	P17
13	Technical Specifications	P18

► 01. What's Included



Camera * 2



Bracket * 2



Solar Panel * 2



Ethernet
Cable



HomeBase



Mounting
Bracket * 2



Screw Pack * 4



USB Cable * 2



Power Cable



Memory Card
(included)

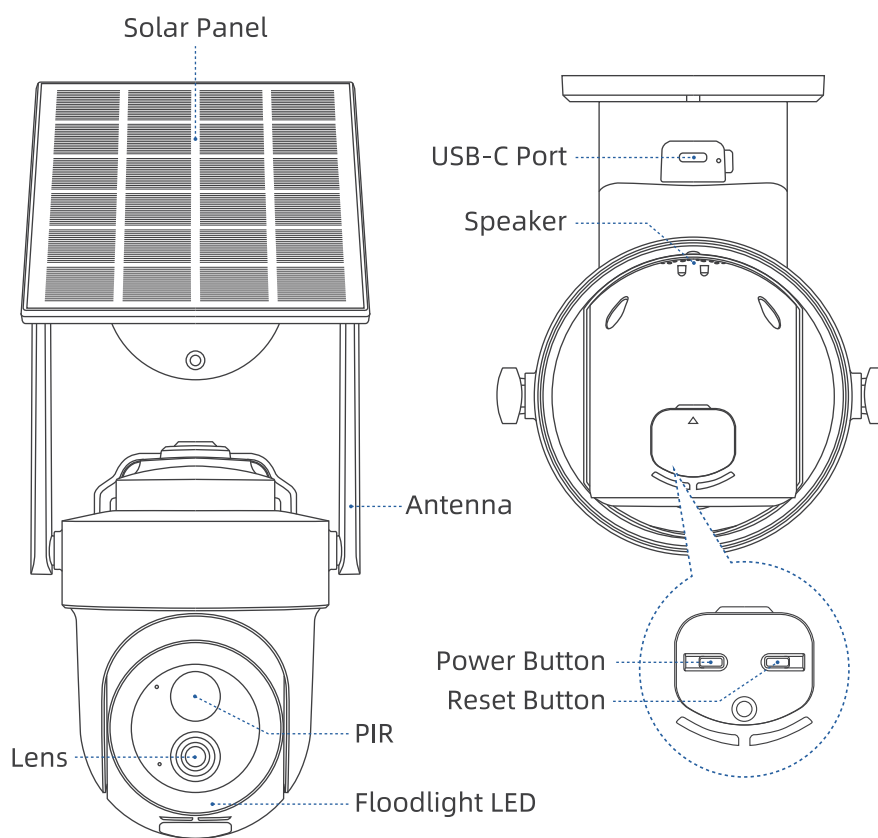


Service Card



User Manual

► 02. Product Overview

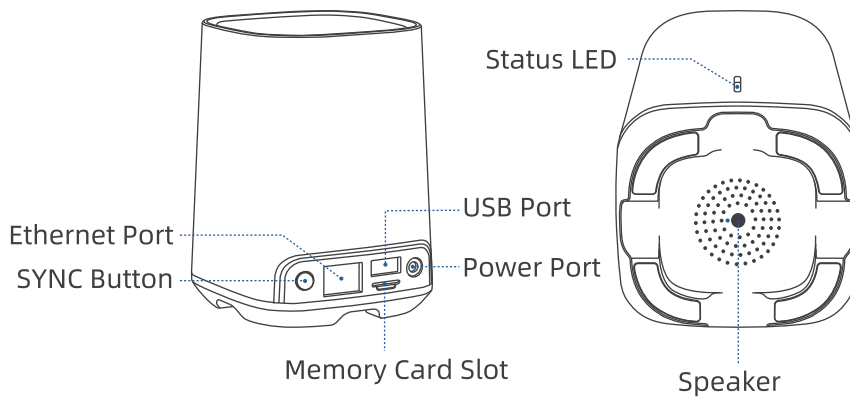


Camera Command Indicator Definition	Scenarios	Lighting Rules (Red/Blue Lights)
	Power - on	Blue light stays on for 3 seconds
	Pairing	Blue light flashes at 1Hz
	Upgrading	Blue light flashes at 2Hz
	Normal Operation	Blue light stays on
	Production Testing	Red and blue lights flash alternately at 1/3Hz
	Camera Aging	Red and blue lights stay on
	Network Abnormality	Red light flashes at 0.5Hz
	Low Battery (Battery Level \leq 20%)	Red light flashes once every 3 seconds, each flash lasting 1 second, until charging begins or the device is turned off. (No flash during sleep mode).
	Shutdown	After pressing and holding the button for 5 seconds to prompt shutdown, the red light flashes at 1Hz until the device is turned off

Camera Key Definition	Scenarios	Button Press Definition
	Power - on	Press and hold the PWR button for 3 seconds
	Pairing	Press and hold the RST button for 2 seconds
	Reset	Press the RST button 5 times in a row
	Shutdown	Press and hold the PWR button for 5 seconds

► 03. HomeBase (M4B)

The M4B HomeBase can connect to a maximum of four cameras.



Lights at the HomeBase	Scenarios	Lighting Rules
	Network Normal	Blue light stays on
	Boot	Red light stays on
	Network Disconnection	Red light flashes slowly
	Upgrade	Red and blue lights flash
	Network Configuration	Blue light flashes slowly
Keys for the HomeBase	Scenarios	Meaning of the buttons
	Binding	Press and hold for 3 seconds
	Reset	Press and hold for 10 seconds

► 04. Download the App

Download "Koccam" app from Google Play™ or App Store™. Or scan the QR codes below with your smartphone.

NOTE: Google Play™ is a trademark of Google Inc.

App Store™ is a service mark of Apple Inc.



► 05. Setting up the System

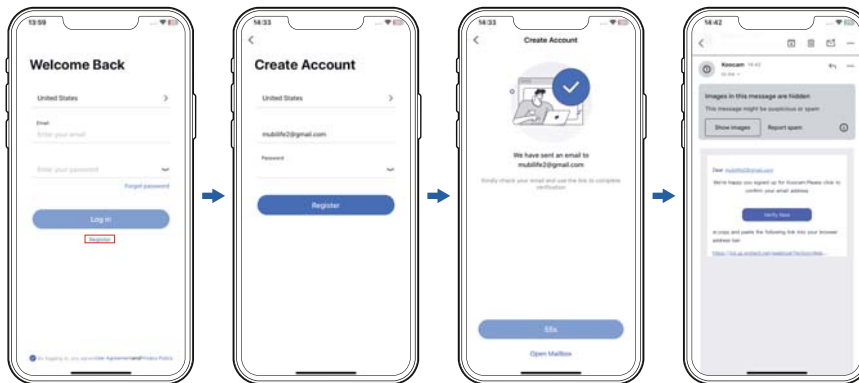
Please turn on both of the following permissions.

- ① Allow the "Koccam" app to access mobile data and Wi-Fi; Otherwise, it will fail to connect to the camera.
- ② Enable push notifications for the "Koccam" app; Otherwise, the phone will not receive alerts when motion is detected.



► 06. Accounts Registration

New users are required to register the "Koocam" app for operation and use in conjunction with the camera using a real email address.



- ① Click "Register" to create a new account.
- ② Select your region, fill in your email address and create a password.
- ③ Click "Register" again, the APP will send a verification email to your mailbox.
- ④ Find the corresponding email in your mailbox and select "Verify".
- ⑤ Return to APP to login your new account.

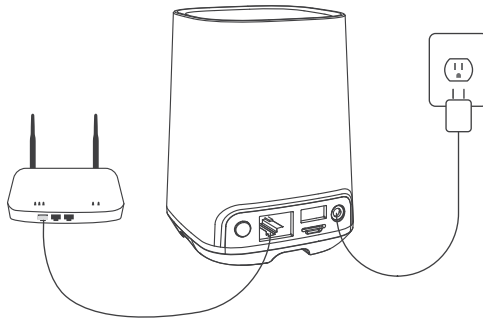
NOTE:

- ① Agree to Terms: Review and accept the User Agreement and Privacy Policy before proceeding.
- ② Use a Valid Email: Provide the correct email to receive verification codes for password resets.
- ③ Select Correct Region: Choose the right region during registration. Cameras can't be shared across accounts in different regions, and your account will only be accessible with the correct country selected during login.

▶ 07. Connecting the HomeBase

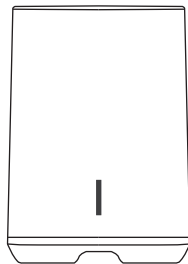
● Connect the HomeBase to the Internet

① Power on the HomeBase: Connect the HomeBase to the LAN port and power port of your home router. (Use the Ethernet cable and original 12V2A power adapter included in the package.)



② Wait for 1 minute until the HomeBase LED changes from red to blue.

③ Prepare for pairing: Once the LED turns blue, press and hold the SYNC button until you hear a "di" sound. Wait for the LED to change from solid blue to blinking blue, indicating that the HomeBase is ready for pairing.



▶ 08. Turn on the Camera

① **Charge the camera:** Use the supplied USB cable to charge the camera. The power indicator will light up green during charging and turn off when the camera is fully charged.

② **Power on the camera:** Press and hold the Power button until the camera indicator lights up, confirming that the camera has powered on successfully.

③ **Reset the camera:** To ensure a smooth connection, reset the camera after powering it on. Press and hold the Reset button for 3 seconds until you hear a beep and the camera indicator starts blinking blue. This indicates the camera has been successfully reset and is ready for connection.

NOTE:

If the camera and HomeBase are powered on simultaneously, the camera will automatically connect to the HomeBase.

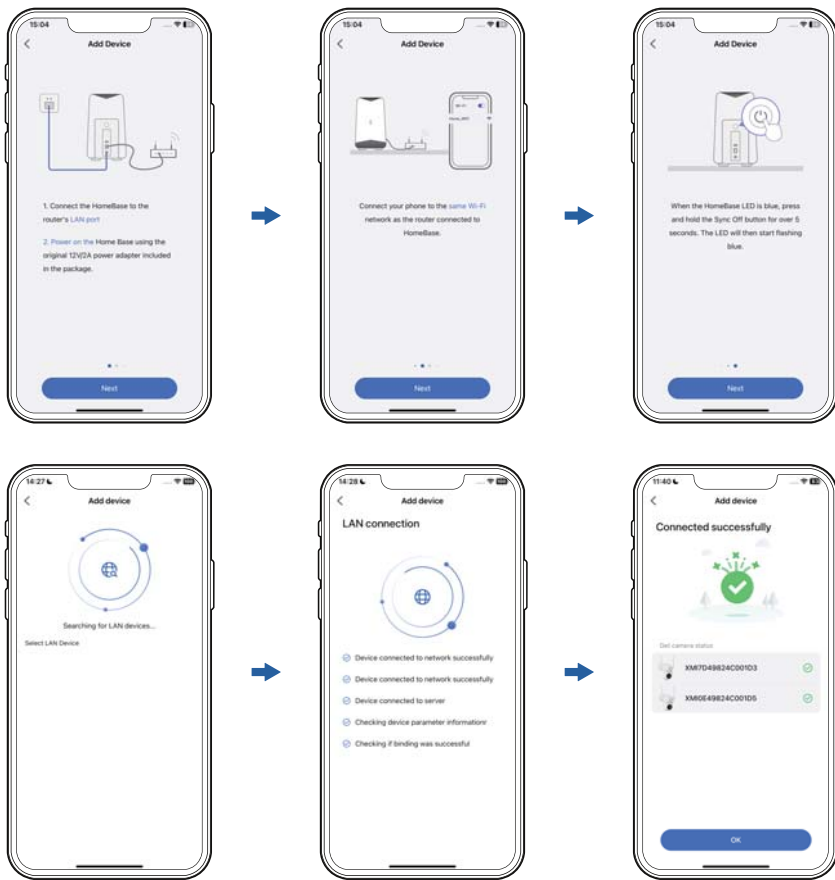
The camera indicator will change from blinking blue to solid blue, indicating a successful connection.

► 09. Pair Up the HomeBase

● Add a New Device (HomeBase)

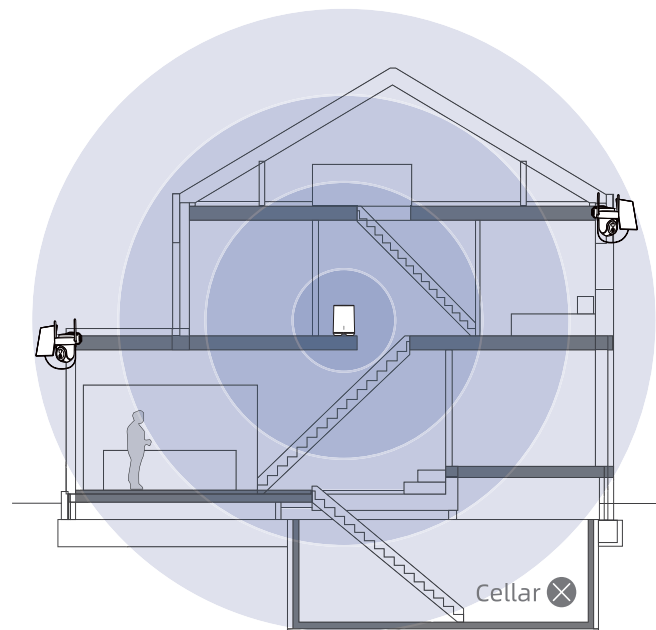
- ① Verify that your router network is functioning properly and that the HomeBase LED is blinking blue. (**Note:** This is required for a successful connection.)
- ② Ensure your cell phone network is working normally. (It can support any Wi-Fi network with cellular data and is not restricted to the same router's Wi-Fi network as the HomeBase connection.)
- ③ Open the app and select "Scan to Add" from the interface.
- ④ Scan the QR code located on the bottom of the HomeBase.
- ⑤ Automatic connection.
- ⑥ Connection successful.





► 10. Mounting the Camera

● HomeBase Connectable Range



Location:

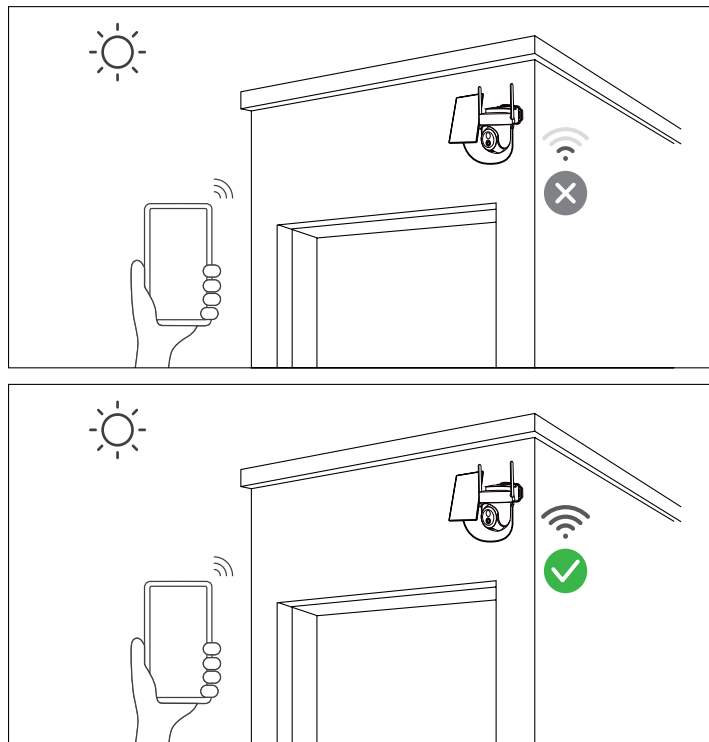
The signal range of the HomeBase can extend up to 300 meters in a circular area in open spaces without obstacles. However, walls, glass, and other barriers may cause significant signal interference.

To ensure a good signal for your cameras, position the HomeBase at the center of multiple cameras and at least 1.2 meters above the ground.

NOTE: Avoid placing the HomeBase in a basement.

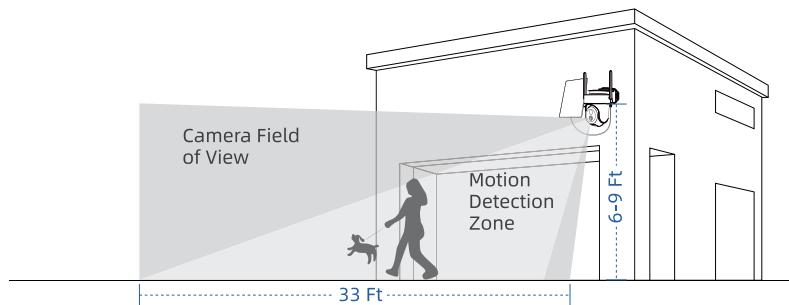
● Test the Wi-Fi Signal at Installation Position

Before mounting the camera, please move the camera under the intended mounting position and test the Wi-Fi signal quality of the mounting position with your cell phone to ensure that Homebase can provide a good Wi-Fi signal.



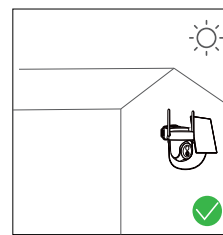
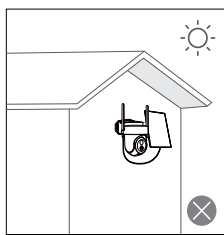
● Select Height

Hang Solar Camera 6-9 Ft above the ground. This height maximizes the detection range of the motion sensor of Solar Camera.



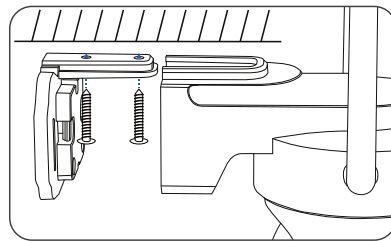
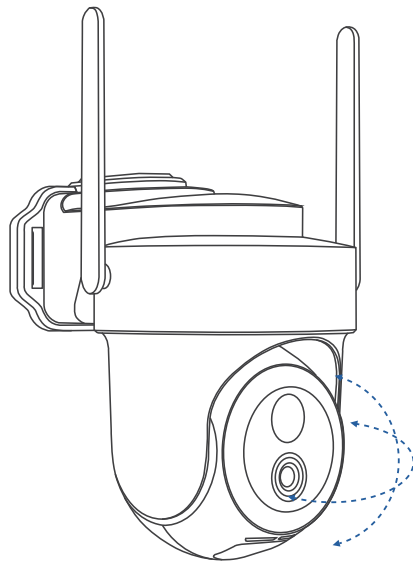
● Select Location

- ① When installing in the northern hemisphere, position the camera facing south. When installing in the southern hemisphere, position the camera facing north.
- ② Ensure that the camera is installed in a way that prevents the sun from being blocked by objects such as eaves, tree branches, or other obstacles.

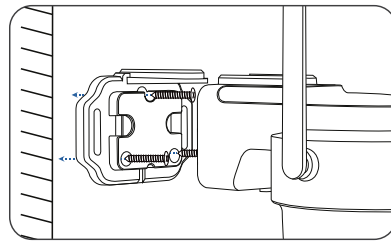


● Installation Camrea

- ① Drilling according to position sticker, drill bit: 15/64"(6mm).
- ② Insert the plugs.
- ③ Tighten the screws.



Installation on the Ceiling



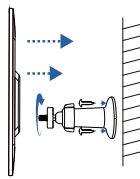
Installation on the Wall

NOTE: Before using the camera, charge it using the provided USB cable. The charging process will take approximately 7-8 hours. Once the camera is fully charged, connect it to the app. (During charging, the LED will remain solid green and will turn off when the camera is fully charged.)

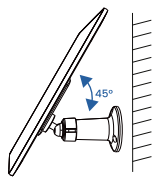
▶ 11. Solar Panel Installation

● Installation Steps

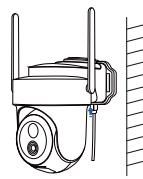
- ① Use Power Drill and screws to fix the camera bracket on the wall. Align the screw cap of the bracket with the screw hole on the back of the solar panel and rotate it clockwise to fix it.
- ② Adjust the angle of the solar panel according to the actual environment, and ensure that the front of the panel is facing up (45° angle is the best inclination angle).
- ③ Unplug the rubber plug on the surface of the camera charging port, insert the solar panel charging head through the hole on the rubber plug, and then insert it into the camera charging port correctly.
- ④ For better waterproof performance, please cover the charging port completely with the rubber plug.



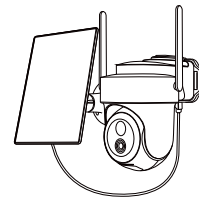
Step 1



Step 2



Step 3



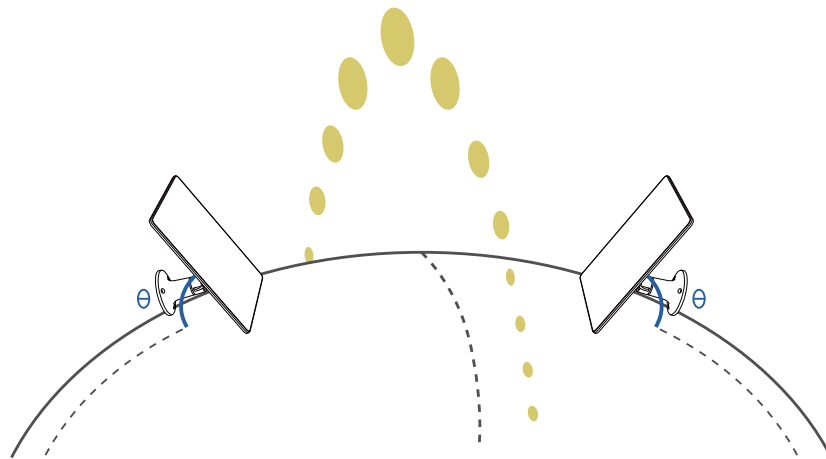
Step 4

● Installation Location

- ① Find a location that receives sunlight for most of the day to ensure maximum exposure.
- ② The solar panel needs a few hours of direct sunlight to convert solar energy into electricity. The conversion efficiency is affected by weather conditions, seasonal changes, geographic locations, etc.

● Installation Angle

- ① Ensure the solar panel is angled to receive direct sunlight.
- ② Avoid installing the solar panel completely horizontally to prevent the accumulation of dust and debris. It is advised to install the solar panel at an angle for optimal sunlight exposure.



The Northern Hemisphere

The Ideal Angle=The Local Latitude \pm 5°

The Southern Hemisphere

● Installation Precautions

- ① Ensure there is no obstruction blocking the solar panel. The energy harvesting efficiency drops significantly even if a small portion of the solar panel is blocked.
- ② Wipe the solar panel regularly to remove dust and debris.

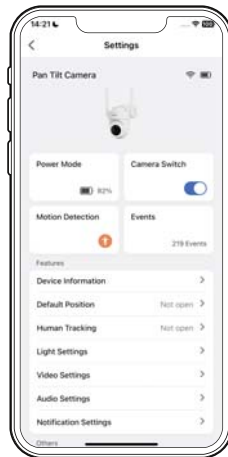
► 12. How to Find the SN Number?

If you have any other questions, please send us the SN number of your camera and describe the problem you have encountered. We will resolve it as soon as possible.

Email: support@mubilife.net



Click Settings



Click Device Information



View SN

► 13. Technical Specifications

Image Quality	Resolution	8MP 3840H x2160V (16:9)
	Image Sensor	1/2.8" Progressive Scan CMOS
Specifications Lens	Viewing Angle	Diagonal 100.6° Horizontal 84.4° Vertical 44.3°
	Focal Length	4mm
Video Specifications	Video Format	H.265
	Frames Per Second	15fps
	Memory Card Support	8GB~Max128GB, Cloud Storage
Communications	Wireless Security	WEP, WPA, WPA2
	Wi-Fi	2.4/5 GHz, IEEE 802.11b/g/n/
Battery	Solar Panel	3W
	Battery Capacity	3.7V/5200mAh 2pcs 18650
	Standby Time	Max 6 months
	Charger	Charger
Applicable Environment	Temperature	-20°C~ 50°C (-4°F~122°F)
	Humidity	20% ~ 85%; Non-condensing
PIR	PIR Angle	110°
	PIR Range	30ft
System Support	Android 2.3 Above / IOS 7.0 Above	

FCC Warning Statement

Changes or modifications not expressly approved by the party responsible for compliance could void the user's authority to operate the equipment. This equipment has been tested and found to comply with the limits for a Class B digital device, pursuant to Part 15 of the FCC Rules. These limits are designed to provide reasonable protection against harmful interference in a residential installation. This equipment generates uses and can radiate radio frequency energy and, if not installed and used in accordance with the instructions, may cause harmful interference to radio communications. However, there is no guarantee that interference will not occur in a particular installation. If this equipment does cause harmful interference to radio or television reception, which can be determined by turning the equipment off and on, the user is encouraged to try to correct the interference by one or more of the following measures:

- - Reorient or relocate the receiving antenna.
- - Increase the separation between the equipment and receiver
- - Connect the equipment into an outlet on a circuit different from that to which the receiver is connected.
- - Consult the dealer or an experienced radio/TV technician for help.

This device complies with part 15 of the FCC Rules. Operation is subject to the following two conditions: (1) This device may not cause harmful interference, and (2) this device must accept any interference received, including interference that may cause undesired operation.

RF Exposure Statement

To maintain compliance with FCC's RF Exposure guidelines, This equipment should be installed and operated with minimum distance of 20cm the radiator your body. This device and its antenna(s) must not be co-located or operation in conjunction with any other antenna or transmitter.

Solar-Powered Wireless Security Camera Kit



Made in China