



Shenzhen Huaxia Testing Technology Co., Ltd

1F., Block A of Tongsheng Technology Building, Huahui Road, Dalang Street, Longhua District, Shenzhen, China

Telephone: +86-755-26648640

Fax: +86-755-26648637

Website: www.cqa-cert.com

Report Template Version: V04

Report Template Revision Date: 2018-07-06

FCC Test Report

Report No. : CQASZ20191201282E-01
Applicant: SHANTOU LULA PLASTIC PRODUCTS CO., LIMITED.
Address of Applicant: 4TH FLOOR, JINCHENG BUILDING, PUMEI DISTRICT, GUANGYI STREET, CHENGHAI, SHANTOU, CHINA

Equipment Under Test (EUT):

EUT Name: R/C QUADCOPTER/DRONE
Model No.: X300C, 8816, 8816W, 8810, 8810W, A6, A6W, A6GPS, 8808, 8808W, 8801, 8802, 8802W, 8803, 8803W, 8805, 8805W, 8806, 8806W, 8807, 8807W, 8807OFP, 8809, 8809W, 8809OFP, 8811, 8811W, 8812, 8812W, 8813, 8813W, 8815, 8815W, 8816, 8816W, 8817, 8817W, 8818, 8818W, 8819, 8819W, 8820, 8820-1, 8820W, 8822, 8822-1, 8822W, 8823, 8823-1, 8823W, 88025, 8825-1, 88025W, 8826, 8826-1, 8826W, 8827, 8827-1, 8827W, 8828, 8828-1, 8828W, 8829, 8829-1, 8829W, S5

Test Model No.: X300C
Brand Name: N/A
FCC ID: 2AVJKX300C8810WRX
Standards: 47 CFR Part 15, Subpart C
Date of Receipt: 2019-12-10
Date of Test: 2019-12-10 to 2019-12-30
Date of Issue: 2019-12-30
Test Result : PASS*

*In the configuration tested, the EUT complied with the standards specified above

Tested By:

Tom Chen

(Tom Chen)

Reviewed By:

Aaron Ma

(Aaron Ma)

Approved By:

Jack Ai

(Jack Ai)



The test report is effective only with both signature and specialized stamp, The result(s) shown in this report refer only to the sample(s) tested. Without written approval of CQA, this report can't be reproduced except in full.

1 Version

Revision History Of Report

Report No.	Version	Description	Issue Date
CQASZ20191201282E-01	Rev.01	Initial report	2019-12-30

2 Test Summary

Test Item	Test Requirement	Test method	Result
Antenna Requirement	47 CFR Part 15, Subpart C Section 15.203	ANSI C63.10 (2013)	PASS
AC Power Line Conducted Emission	47 CFR Part 15, Subpart C Section 15.207	ANSI C63.10 (2013)	N/A
Field Strength of the Fundamental Signal	47 CFR Part 15, Subpart C Section 15.249 (a)	ANSI C63.10 (2013)	PASS
Spurious Emissions	47 CFR Part 15, Subpart C Section 15.249 (a)/15.209	ANSI C63.10 (2013)	PASS
Restricted bands around fundamental frequency (Radiated Emission)	47 CFR Part 15, Subpart C Section 15.249(a)/15.205	ANSI C63.10 (2013)	PASS
20dB Occupied Bandwidth	47 CFR Part 15, Subpart C Section 15.215 (c)	ANSI C63.10 (2013)	PASS

N/A: When the EUT charging, 2.4G will not work , So Not Applicable

Model No.: X300C, 8816, 8816W, 8810, 8810W, A6, A6W, A6GPS, 8808, 8808W, 8801, 8802, 8802W, 8803, 8803W, 8805, 8805W, 8806, 8806W, 8807, 8807W, 8807OFP, 8809, 8809W, 8809OFP, 8811, 8811W, 8812, 8812W, 8813, 8813W, 8815, 8815W, 8816, 8816W, 8817, 8817W, 8818, 8818W, 8819, 8819W, 8820, 8820-1, 8820W, 8822, 8822-1, 8822W, 8823, 8823-1, 8823W, 88025, 8825-1, 88025W, 8826, 8826-1, 8826W, 8827, 8827-1, 8827W, 8828, 8828-1, 8828W, 8829, 8829-1, 8829W, S5

Only the model X300C was tested, Their electrical circuit design, layout, components used and internal wiring are identical, Only the color or the packaging is different.

3 Contents

	Page
1 VERSION.....	2
2 TEST SUMMARY.....	3
3 CONTENTS.....	4
4 GENERAL INFORMATION.....	5
4.1 CLIENT INFORMATION.....	5
4.2 GENERAL DESCRIPTION OF EUT.....	5
4.3 TEST ENVIRONMENT AND MODE.....	7
4.4 DESCRIPTION OF SUPPORT UNITS.....	7
4.5 STATEMENT OF THE MEASUREMENT UNCERTAINTY.....	7
4.6 TEST LOCATION.....	8
4.7 TEST FACILITY.....	8
4.8 DEVIATION FROM STANDARDS.....	8
4.9 ABNORMALITIES FROM STANDARD CONDITIONS.....	8
4.10 OTHER INFORMATION REQUESTED BY THE CUSTOMER.....	8
4.11 EQUIPMENT LIST.....	9
5 TEST RESULTS AND MEASUREMENT DATA.....	10
5.1 ANTENNA REQUIREMENT.....	10
5.2 RADIATED EMISSION.....	11
5.3 20DB BANDWIDTH.....	19
6 PHOTOGRAPHS.....	22
6.1 RADIATED EMISSION TEST SETUP.....	22
6.2 EUT CONSTRUCTIONAL DETAILS.....	24

4 General Information

4.1 Client Information

Applicant:	SHANTOU LULA PLASTIC PRODUCTS CO., LIMITED.
Address of Applicant:	4TH FLOOR, JINCHENG BUILDING, PUMEI DISTRICT, GUANGYI STREET, CHENGHAI, SHANTOU, CHINA
Manufacturer:	SHANTOU LULA PLASTIC PRODUCTS CO., LIMITED.
Address of Manufacturer:	4TH FLOOR, JINCHENG BUILDING, PUMEI DISTRICT, GUANGYI STREET, CHENGHAI, SHANTOU, CHINA

4.2 General Description of EUT

Product Name:	R/C QUADCOPTER/DRONE
Model No.:	X300C, 8816, 8816W, 8810, 8810W, A6, A6W, A6GPS, 8808, 8808W, 8801, 8802, 8802W, 8803, 8803W, 8805, 8805W, 8806, 8806W, 8807, 8807W, 8807OFP, 8809, 8809W, 8809OFP, 8811, 8811W, 8812, 8812W, 8813, 8813W, 8815, 8815W, 8816, 8816W, 8817, 8817W, 8818, 8818W, 8819, 8819W, 8820, 8820-1, 8820W, 8822, 8822-1, 8822W, 8823, 8823-1, 8823W, 88025, 8825-1, 88025W, 8826, 8826-1, 8826W, 8827, 8827-1, 8827W, 8828, 8828-1, 8828W, 8829, 8829-1, 8829W, S5
Test Model No.:	X300C
Trade Mark:	N/A
Hardware Version:	KY-XLL8810T-132-1
Software Version:	KY-XLL8810T-132-1
Frequency Range:	2445 MHz ~ 2473MHz
Modulation Type:	GFSK
Number of Channels:	5 (declared by the client)
Sample Type:	<input type="checkbox"/> Mobile <input checked="" type="checkbox"/> Portable <input type="checkbox"/> Fix Location
Test Software of EUT:	RF test (manufacturer declare)
Antenna Type:	Integral antenna
Antenna Gain:	0dBi
Power Supply:	Li-ion Battery 3.7V, Charging by DC5V

Operation Frequency each of channel							
Channel	Frequency	Channel	Frequency	Channel	Frequency	Channel	Frequency
1	2445MHz	2	2458MHz	3	2463MHz	4	2468MHz
5	2473MHz						

Note:

In section 15.31(m), regards to the operating frequency range over 10 MHz, the Lowest frequency, the middle frequency, and the highest frequency of channel were selected to perform the test, and the selected channel see below:

Channel	Frequency
The Lowest channel(CH1)	2445MHz
The Middle channel(CH3)	2463MHz
The Highest channel(CH5)	2473MHz

4.3 Test Environment and Mode

Operating Environment:	
Radiated Emissions:	
Temperature:	24.9 °C
Humidity:	53 % RH
Atmospheric Pressure:	1015mbar
Radio conducted item test (RF Conducted test room):	
Temperature:	23.9 °C
Humidity:	40 % RH
Atmospheric Pressure:	1015mbar
Test mode:	
Transmitting mode:	Use test software (RF test) to set the lowest frequency, the middle frequency and the highest frequency keep transmitting of the EUT.

4.4 Description of Support Units

The EUT has been tested with associated equipment below.

Description	Manufacturer	Model No.	Remark	FCC certification
-	-	-	-	-

4.5 Statement of the measurement uncertainty

The data and results referenced in this document are true and accurate.

The reader is cautioned that there may be errors within the calibration limits of the equipment and facilities.

The measurement uncertainty was calculated for all measurements listed in this test report acc. to CISPR 16 - 4 „Specification for radio disturbance and immunity measuring apparatus and methods – Part 4: Uncertainty in EMC Measurements“ and is documented in the **Shenzhen Huaxia Testing Technology Co., Ltd** quality system acc. to DIN EN ISO/IEC 17025.

Furthermore, component and process variability of devices similar to that tested may result in additional deviation. The manufacturer has the sole responsibility of continued compliance of the device.

Hereafter the best measurement capability for **CQA** laboratory is reported:

Test	Range	Uncertainty	Notes
Radiated Emission	Below 1GHz	5.12dB	(1)
Radiated Emission	Above 1GHz	4.60dB	(1)
Conducted Disturbance	0.15~30MHz	3.34dB	(1)

(1) This uncertainty represents an expanded uncertainty expressed at approximately the 95% confidence level using a coverage factor of k=2.

4.6 Test Location

All tests were performed at:

Shenzhen Huaxia Testing Technology Co., Ltd.,

1F., Block A of Tongsheng Technology Building, Huahui Road, Dalang Street, Longhua District, Shenzhen, China

4.7 Test Facility

- **A2LA (Certificate No. 4742.01)**

Shenzhen Huaxia Testing Technology Co., Ltd., Shenzhen EMC Laboratory is accredited by the American Association for Laboratory Accreditation(A2LA). Certificate No. 4742.01.

- **FCC Registration No.: 522263**

Shenzhen Huaxia Testing Technology Co., Ltd., Shenzhen EMC Laboratory has been registered and fully described in a report filed with the (FCC) Federal Communications Commission. The acceptance letter from the FCC is maintained in our files. Registration No.:522263

4.8 Deviation from Standards

None.

4.9 Abnormalities from Standard Conditions

None.

4.10 Other Information Requested by the Customer

None.

4.11 Equipment List

Test Equipment	Manufacturer	Model No.	Instrument No.	Calibration Date	Calibration Due Date
EMI Test Receiver	R&S	ESR7	CQA-005	2019/10/25	2020/10/24
Spectrum analyzer	R&S	FSU26	CQA-038	2019/10/25	2020/10/24
Preamplifier	MITEQ	AMF-6D-02001800-29-20P	CQA-036	2019/10/25	2020/10/24
Loop antenna	Schwarzbeck	FMZB1516	CQA-060	2019/10/21	2020/10/20
Bilog Antenna	R&S	HL562	CQA-011	2019/9/26	2020/9/25
Horn Antenna	R&S	HF906	CQA-012	2019/9/26	2020/9/25
Horn Antenna	Schwarzbeck	BBHA 9170	CQA-088	2019/9/25	2020/9/24
Coaxial Cable (Above 1GHz)	CQA	N/A	C007	2019/9/26	2020/9/25
Coaxial Cable (Below 1GHz)	CQA	N/A	C013	2019/9/26	2020/9/25
Antenna Connector	CQA	RFC-01	CQA-080	2019/9/26	2020/9/25
RF cable(9KHz~40GHz)	CQA	RF-01	CQA-079	2019/9/26	2020/9/25
Power divider	MIDWEST	PWD-2533-02-SMA-79	CQA-067	2019/9/26	2020/9/25

Note:

The temporary antenna connector is soldered on the PCB board in order to perform conducted tests and this temporary antenna connector is listed in the equipment list.

5 Test results and Measurement Data

5.1 Antenna Requirement

Standard requirement:	47 CFR Part 15C Section 15.203
15.203 requirement: An intentional radiator shall be designed to ensure that no antenna other than that furnished by the responsible party shall be used with the device. The use of a permanently attached antenna or of an antenna that uses a unique coupling to the intentional radiator, the manufacturer may design the unit so that a broken antenna can be replaced by the user, but the use of a standard antenna jack or electrical connector is prohibited.	
EUT Antenna:	Please see EUT internal photos
The antenna is integral antenna. The best case gain of the antenna is 0dBi.	

5.2 Radiated Emission

Test Requirement:	47 CFR Part 15C Section 15.249 and 15.209 and 15.205				
Test Method:	ANSI C63.10: 2013				
Test Site:	Measurement Distance: 3m (Semi-Anechoic Chamber)				
Receiver Setup:	Frequency	Detector	RBW	VBW	Remark
	0.009MHz-0.090MHz	Peak	10kHz	30KHz	Peak
	0.009MHz-0.090MHz	Average	10kHz	30KHz	Average
	0.090MHz-0.110MHz	Quasi-peak	10kHz	30KHz	Quasi-peak
	0.110MHz-0.490MHz	Peak	10kHz	30KHz	Peak
	0.110MHz-0.490MHz	Average	10kHz	30KHz	Average
	0.490MHz -30MHz	Quasi-peak	10kHz	30kHz	Quasi-peak
	30MHz-1GHz	Quasi-peak	100 kHz	300KHz	Quasi-peak
	Above 1GHz	Peak	1MHz	3MHz	Peak
		Peak	1MHz	10Hz	Average
Note: For fundamental frequency, RBW=5MHz, VBW=5MHz, Peak detector is for PK value, RMS detector is for Average value.					
Limit: (Spurious Emissions and band edge)	Frequency	Field strength (microvolt/meter)	Limit (dBuV/m)	Remark	Measurement distance (m)
	0.009MHz-0.490MHz	2400/F(kHz)	-	-	300
	0.490MHz-1.705MHz	24000/F(kHz)	-	-	30
	1.705MHz-30MHz	30	-	-	30
	30MHz-88MHz	100	40.0	Quasi-peak	3
	88MHz-216MHz	150	43.5	Quasi-peak	3
	216MHz-960MHz	200	46.0	Quasi-peak	3
	960MHz-1GHz	500	54.0	Quasi-peak	3
	Above 1GHz	500	54.0	Average	3
	Note: 1) 15.35(b), Unless otherwise specified, the limit on peak radio frequency emissions is 20dB above the maximum permitted average emission limit applicable to the equipment under test. This peak limit applies to the total peak emission level radiated by the device. 2) Emissions radiated outside of the specified frequency bands, except for harmonics, shall be attenuated by at least 50 dB below the level of the fundamental or to the general radiated emission limits in Section 15.209, whichever is the lesser attenuation.				
Limit: (Field strength of the fundamental signal)	Frequency	Limit (dBuV/m @3m)		Remark	
	2400MHz-2483.5MHz	94.0		Average Value	
		114.0		Peak Value	

Test Setup:

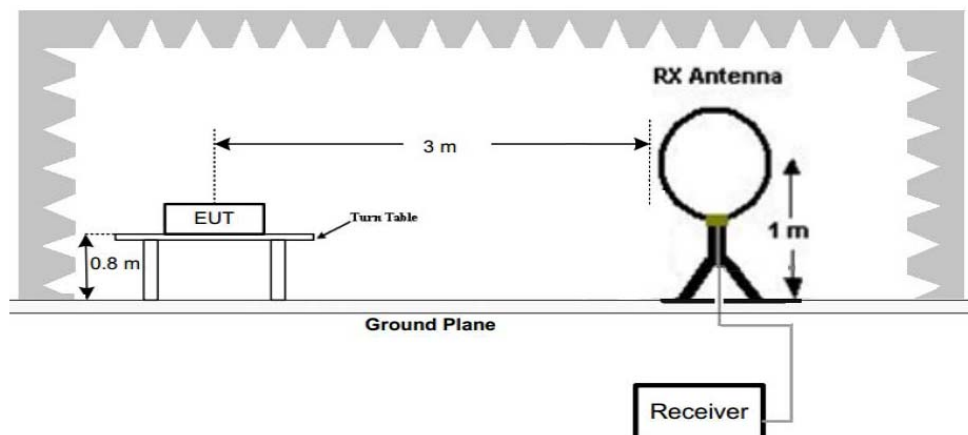


Figure 1. Below 30MHz

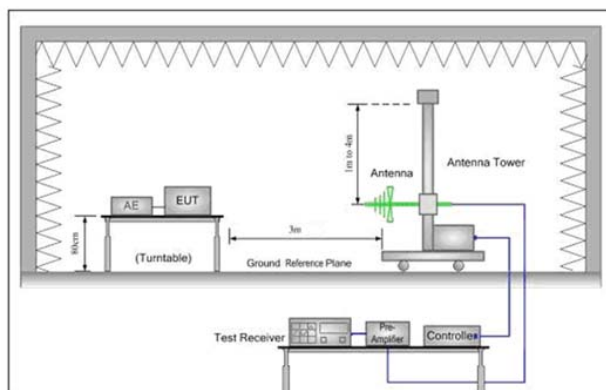


Figure 2. 30MHz to 1GHz

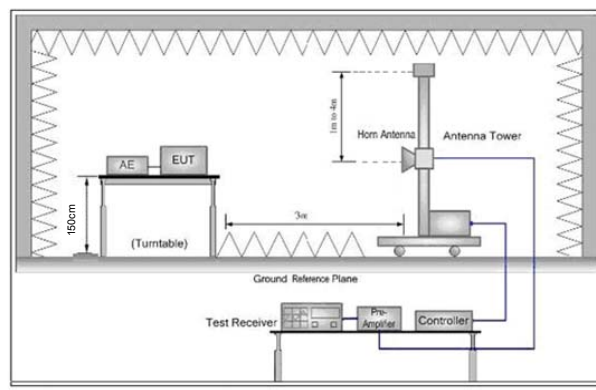


Figure 3. Above 1 GHz

Test Procedure:

- 1) Below 1G: The EUT was placed on the top of a rotating table 0.8 meters above the ground at a 3 meter semi-anechoic chamber. The table was rotated 360 degrees to determine the position of the highest radiation.
 - 2) Above 1G: The EUT was placed on the top of a rotating table 1.5 meters above the ground at a 3 meter semi-anechoic chamber. The table was rotated 360 degrees to determine the position of the highest radiation.
- Note: For the radiated emission test above 1GHz:
Place the measurement antenna away from each area of the EUT determined to be a source of emissions at the specified measurement distance, while keeping the measurement antenna aimed at the source of emissions at each frequency of significant emissions, with polarization oriented for maximum response. The measurement antenna may have to be higher or lower than the EUT, depending on the radiation pattern of the emission and staying aimed at the emission source for receiving the maximum signal. The final measurement antenna elevation shall be that which maximizes the emissions. The measurement antenna elevation for maximum emissions shall be restricted to a range of heights of from 1 m to 4 m above the ground or reference ground plane.
- b. The EUT was set 3 meters away from the interference-receiving antenna, which was mounted on the top of a variable-height antenna tower.
 - c. The antenna height is varied from one meter to four meters above the ground to determine the maximum value of the field strength. Both horizontal and vertical polarizations of the antenna are set to make the measurement.
 - d. For each suspected emission, the EUT was arranged to its worst case and then the antenna was tuned to heights from 1 meter to 4 meters (for the test frequency of

	<p>below 30MHz, the antenna was tuned to heights 1 meter) and the rotatable table was turned from 0 degrees to 360 degrees to find the maximum reading.</p> <p>e. The test-receiver system was set to Peak Detect Function and Specified Bandwidth with Maximum Hold Mode.</p> <p>f. If the emission level of the EUT in peak mode was 10dB lower than the limit specified, then testing could be stopped and the peak values of the EUT would be reported. Otherwise the emissions that did not have 10dB margin would be re-tested one by one using peak, quasi-peak or average method as specified and then reported in a data sheet.</p> <p>g. Test the EUT in the lowest channel,the middle channel,the Highest channel</p> <p>h. The radiation measurements are performed in X, Y, Z axis positioning for Transmitting mode,And found the X axis positioning which it is worse case.</p> <p>i. Repeat above procedures until all frequencies measured was complete.</p>
Exploratory Test Mode:	Transmitting mode
Final Test Mode:	<p>Pretest the EUT at Transmitting mode, For below 1GHz part, through pre-scan, the worst case is the highest channel.</p> <p>Only the worst case is recorded in the report.</p>
Test Results:	Pass

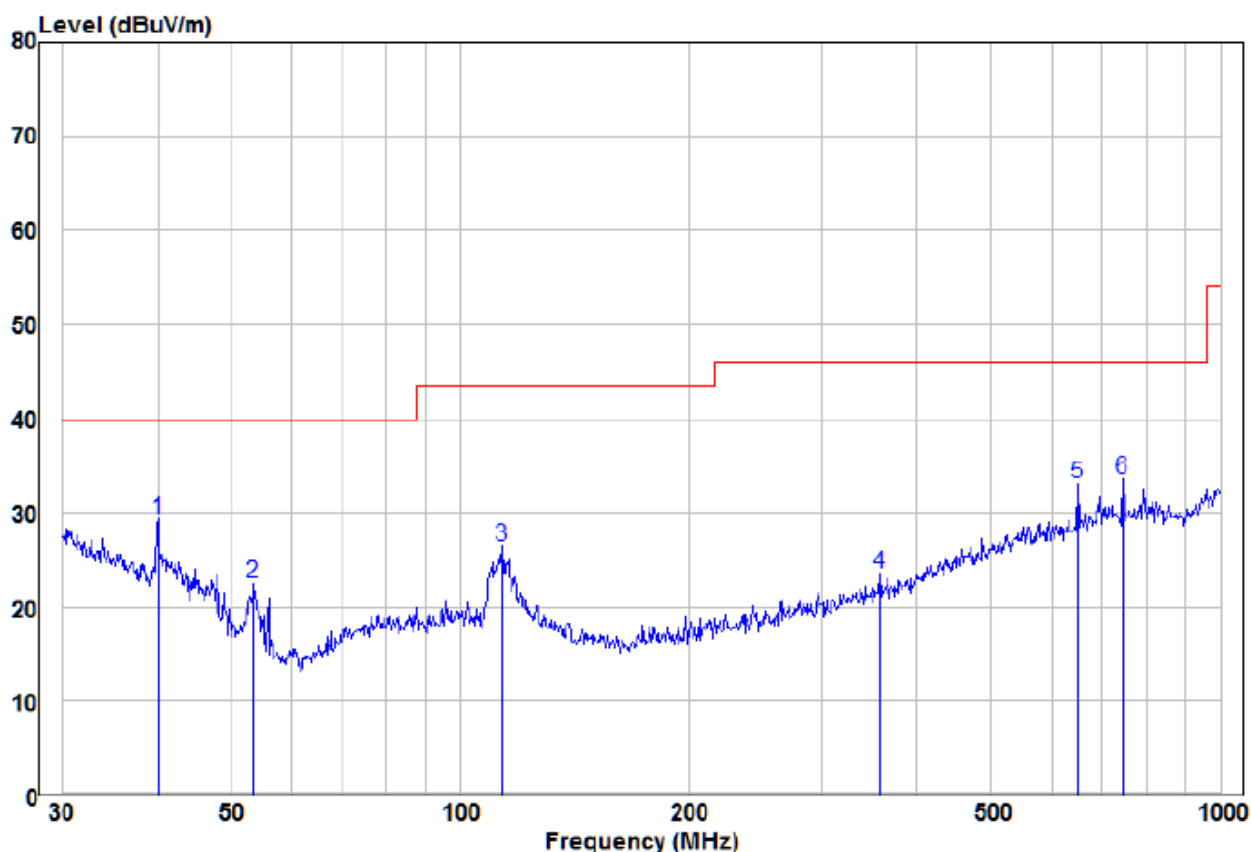
Measurement Data

30MHz~1GHz

Test mode:

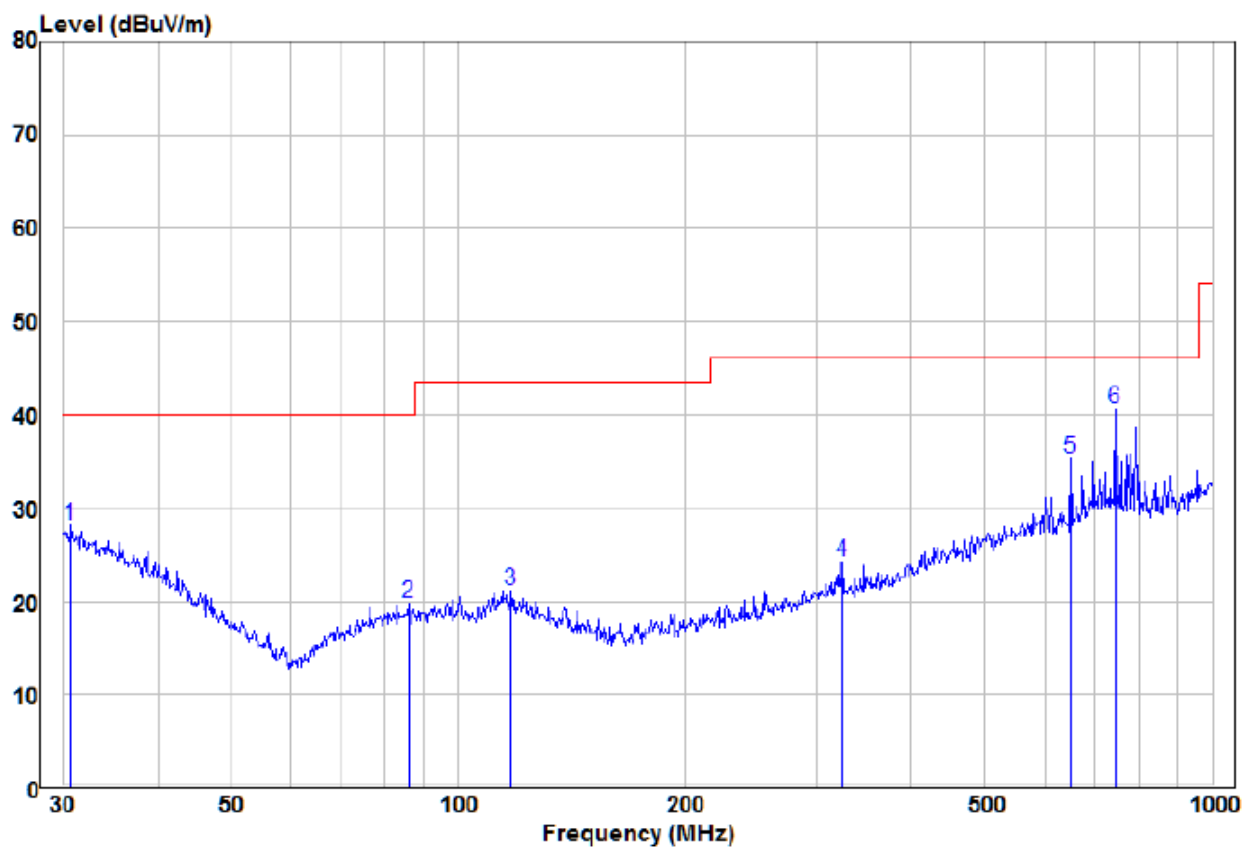
Transmitting

Vertical



		Read		Limit	Over		
	Freq	Level	Factor	Level	Line	Limit	Remark
	MHz	dBuV	dB/m	dBuV/m	dBuV/m	dB	Pol/Phase
1	pp	39.99	14.48	14.80	29.28	40.00	-10.72 Peak
2		53.51	14.79	7.66	22.45	40.00	-17.55 Peak
3		113.71	16.07	10.37	26.44	43.50	-17.06 Peak
4		356.68	10.52	13.11	23.63	46.00	-22.37 Peak
5		649.66	13.89	19.17	33.06	46.00	-12.94 Peak
6		744.87	13.21	20.39	33.60	46.00	-12.40 Peak

Test mode:	Transmitting	Horizontal
------------	--------------	------------



	Read			Limit	Over		
Freq	Level	Factor	Level	Line	Limit	Remark	Pol/Phase
MHz	dBuV	dB/m	dBuV/m	dBuV/m	dB		
1	30.75	10.07	18.14	28.21	40.00	-11.79 Peak	HORIZONTAL
2	85.90	9.96	9.92	19.88	40.00	-20.12 Peak	HORIZONTAL
3	117.77	10.65	10.58	21.23	43.50	-22.27 Peak	HORIZONTAL
4	324.46	11.99	12.32	24.31	46.00	-21.69 Peak	HORIZONTAL
5	649.66	16.08	19.17	35.25	46.00	-10.75 Peak	HORIZONTAL
6 pp	744.87	20.24	20.39	40.63	46.00	-5.37 Peak	HORIZONTAL

Above 1GHz							
Test mode:		Transmitting		Test channel:		Lowest	
Frequency	Meter Reading	Factor	Emission Level	Limits	Over	Detector Type	Ant. Pol.
(MHz)	(dBμV)	(dB)	(dBμV/m)	(dBμV/m)	(dB)		H/V
2390	59.09	-9.2	49.89	74	-24.11	Peak	H
2390	44.54	-9.2	35.34	54	-18.66	AVG	H
2400	60.07	-9.39	50.68	74	-23.32	Peak	H
2400	46.33	-9.39	36.94	54	-17.06	AVG	H
2445	93.81	-8.73	85.08	114	-28.92	peak	H
2445	86.62	-8.73	77.89	94	-16.11	AVG	H
4890	52.98	-4.13	48.85	74	-25.15	peak	H
4890	37.84	-4.13	33.71	54	-20.29	AVG	H
7335	48.64	1.44	50.08	74	-23.92	peak	H
7335	35.29	1.44	36.73	54	-17.27	AVG	H
2390	59.05	-9.2	49.85	74	-24.15	peak	V
2390	44.21	-9.2	35.01	54	-18.99	AVG	V
2400	59.85	-9.39	50.46	74	-23.54	peak	V
2400	46.20	-9.39	36.81	54	-17.19	AVG	V
2445	92.47	-8.73	83.74	114	-30.26	peak	V
2445	85.62	-8.73	76.89	94	-17.11	AVG	V
4890	53.60	-4.13	49.47	74	-24.53	peak	V
4890	36.11	-4.13	31.98	54	-22.02	AVG	V
7335	49.94	1.44	51.38	74	-22.62	peak	V
7335	36.77	1.44	38.21	54	-15.79	AVG	V

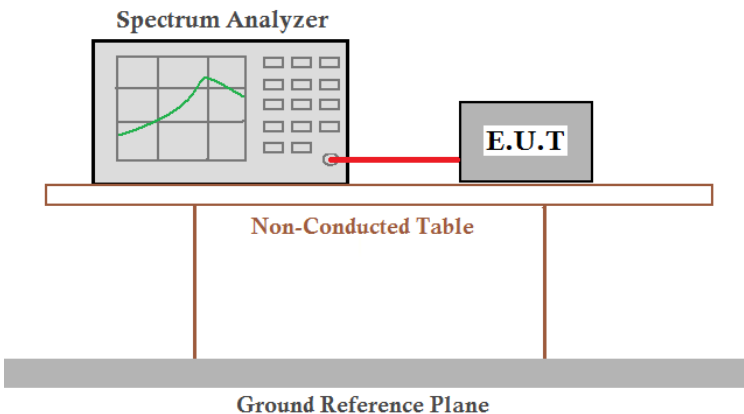
Test mode:		Transmitting		Test channel:		Middle	
Frequency	Meter Reading	Factor	Emission Level	Limits	Over	Detector Type	Ant. Pol.
(MHz)	(dBμV)	(dB)	(dBμV/m)	(dBμV/m)	(dB)		H/V
2458	94.23	-8.67	85.56	114	-28.44	peak	H
2458	86.87	-8.67	78.2	94	-15.8	AVG	H
4916	55.74	-4.24	51.50	74	-22.50	peak	H
4916	38.36	-4.24	34.12	54	-19.88	AVG	H
7374	50.66	1.2	51.86	74	-22.14	peak	H
7374	35.97	1.2	37.17	54	-16.83	AVG	H
2458	93.49	-8.67	84.82	114	-29.18	peak	V
2458	86.31	-8.67	77.64	94	-16.36	AVG	V
4916	52.76	-4.24	48.52	74	-25.48	peak	V
4916	36.42	-4.24	32.18	54	-21.82	AVG	V
7374	51.08	1.2	52.28	74	-21.72	peak	V
7374	38.09	1.2	39.29	54	-14.71	AVG	V

Test mode:		Transmitting		Test channel:		Highest	
Frequency	Meter Reading	Factor	Emission Level	Limits	Over	Detector Type	Ant. Pol.
(MHz)	(dBμV)	(dB)	(dBμV/m)	(dBμV/m)	(dB)		H/V
2473	96.16	-8.61	87.55	114	-26.45	peak	H
2473	88.27	-8.61	79.66	94	-14.34	AVG	H
2483.5	58.05	-9.29	48.76	74	-25.24	Peak	H
2483.5	44.43	-9.29	35.14	54	-18.86	AVG	H
4946	52.94	-4.04	48.90	74	-25.10	peak	H
4946	37.94	-4.04	33.90	54	-20.10	AVG	H
7419	50.93	1.61	52.54	74	-21.46	peak	H
7419	37.96	1.61	39.57	54	-14.43	AVG	H
2473	95.27	-8.61	86.66	114	-27.34	peak	V
2473	87.18	-8.61	78.57	94	-15.43	AVG	V
2483.5	57.71	-9.29	48.42	74	-25.58	peak	V
2483.5	46.05	-9.29	36.76	54	-17.24	AVG	V
4946	54.83	-4.04	50.79	74	-23.21	peak	V
4946	37.93	-4.04	33.89	54	-20.11	AVG	V
7419	50.40	1.61	52.01	74	-21.99	peak	V
7419	36.47	1.61	38.08	54	-15.92	AVG	V

Remark:

- 1) The field strength is calculated by adding the Antenna Factor, Cable Factor & Preamplifier. The basic equation with a sample calculation is as follows:
Final Test Level = Receiver Reading + Antenna Factor + Cable Factor – Preamplifier Factor
- 2) Scan from 9kHz to 25GHz, The disturbance above 10GHz and below 30MHz was very low, and the above harmonics were the highest point could be found when testing, so only the above harmonics had been displayed. The amplitude of spurious emissions from the radiator which are attenuated more than 20dB below the limit need not be reported .

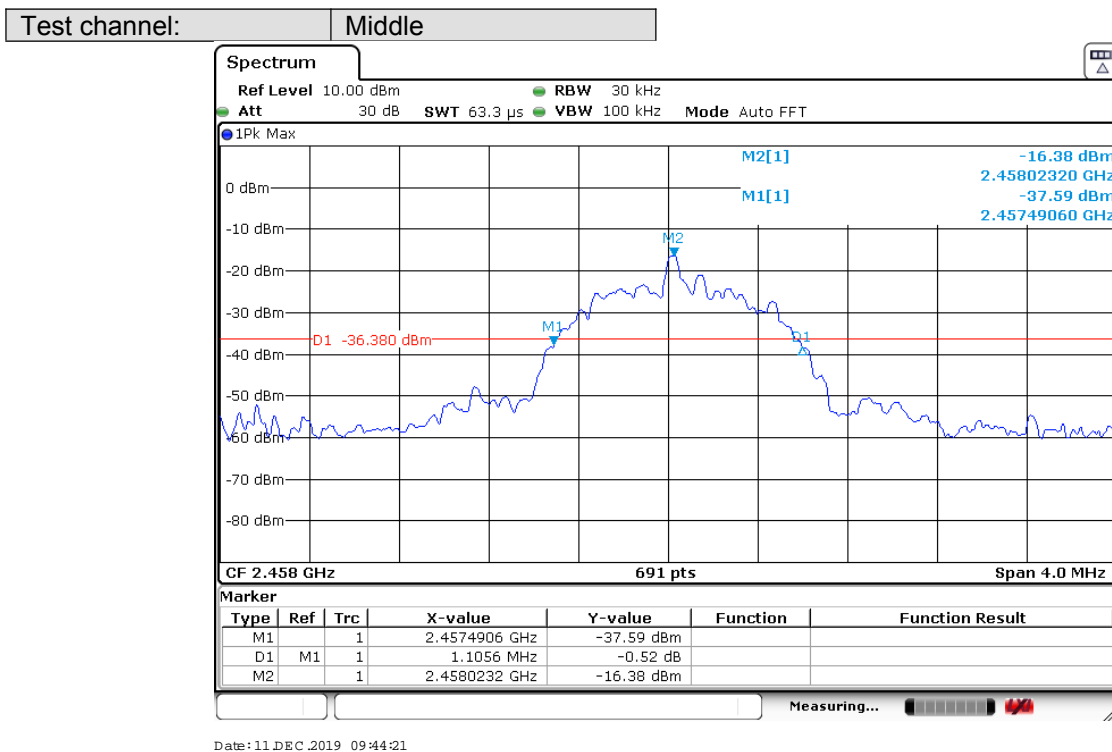
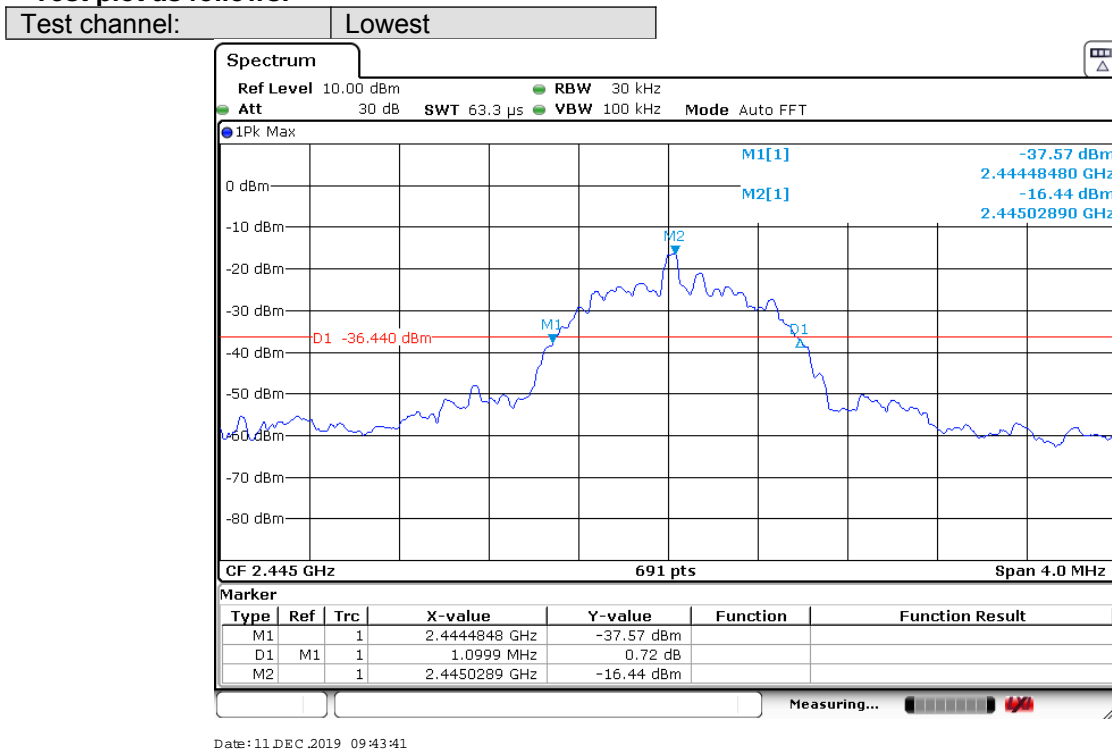
5.3 20dB Bandwidth

Test Requirement:	47 CFR Part 15C Section 15.215
Test Method:	ANSI C63.10:2013
Test Setup:	 <p>The diagram illustrates the test setup. A Spectrum Analyzer is connected to an E.U.T (Equipment Under Test) via a red cable. Both the Spectrum Analyzer and the E.U.T are placed on a Non-Conducted Table. The table is supported by a Ground Reference Plane.</p>
Test Mode:	Transmitting with GFSK modulation.
Limit:	N/A
Test Results:	Pass

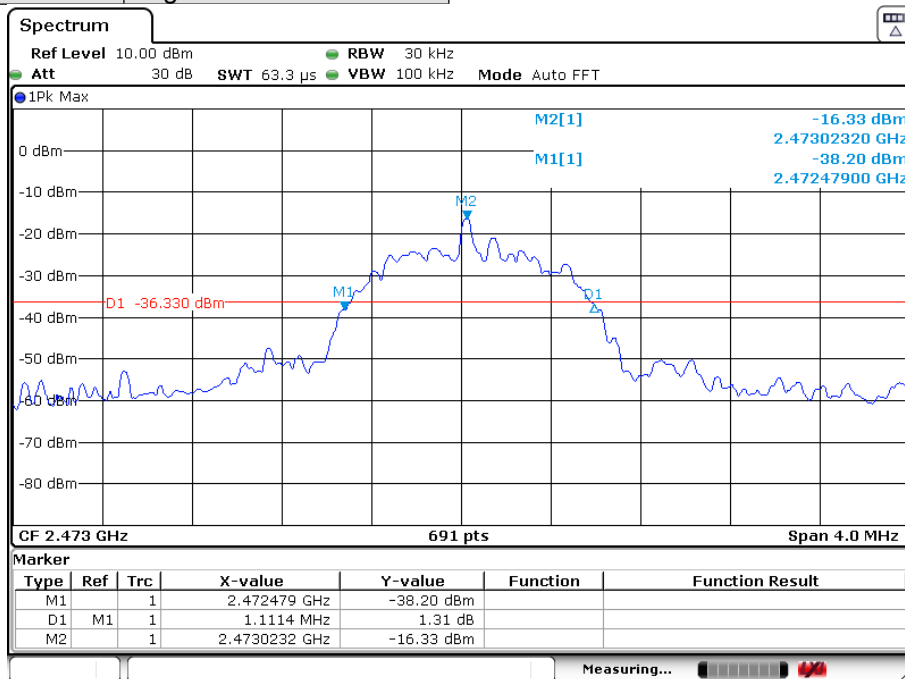
Measurement Data

Test channel	20dB bandwidth (MHz)	Results
Lowest	1.100	Pass
Middle	1.106	Pass
Highest	1.111	Pass

Test plot as follows:



Test channel: Highest



Date: 11 DEC 2019 09:42:48

6 Photographs

6.1 Radiated Emission Test Setup

9KHz~30MHz



30MHz~1GHz:



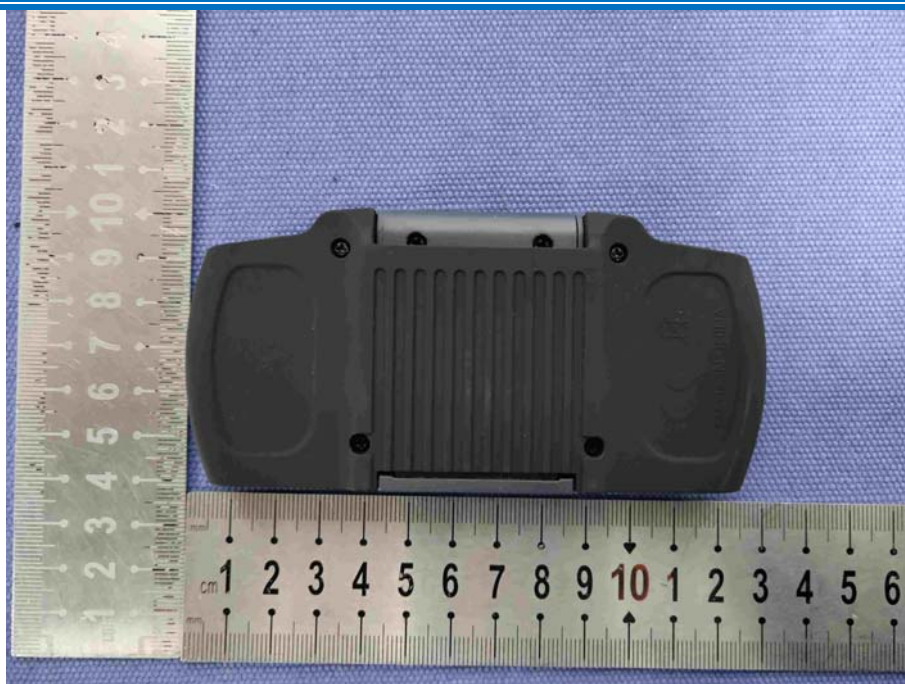
Above 1GHz:



6.2 EUT Constructional Details

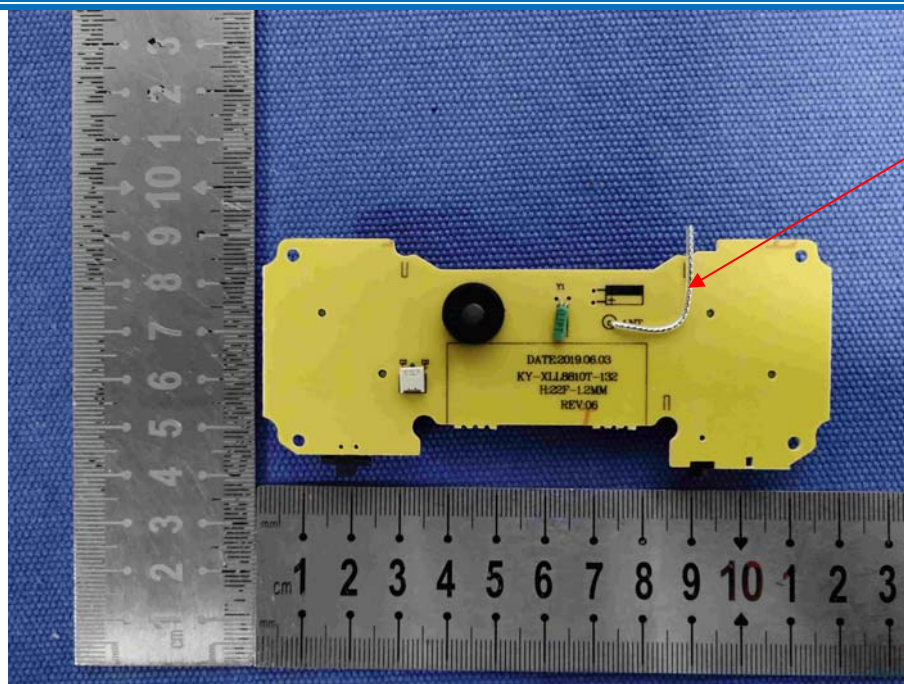
Test Model No.: X300C



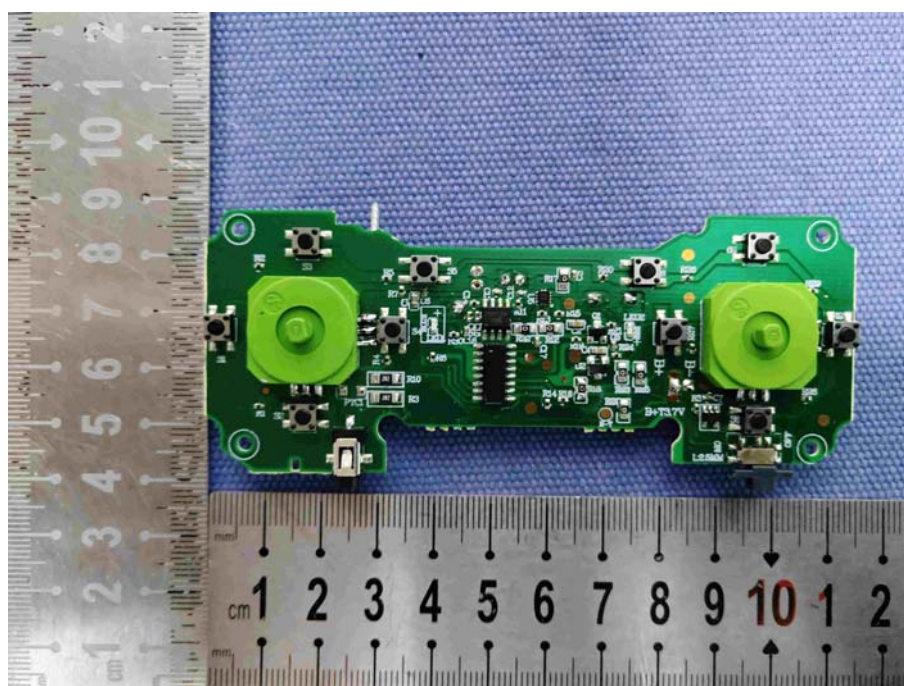


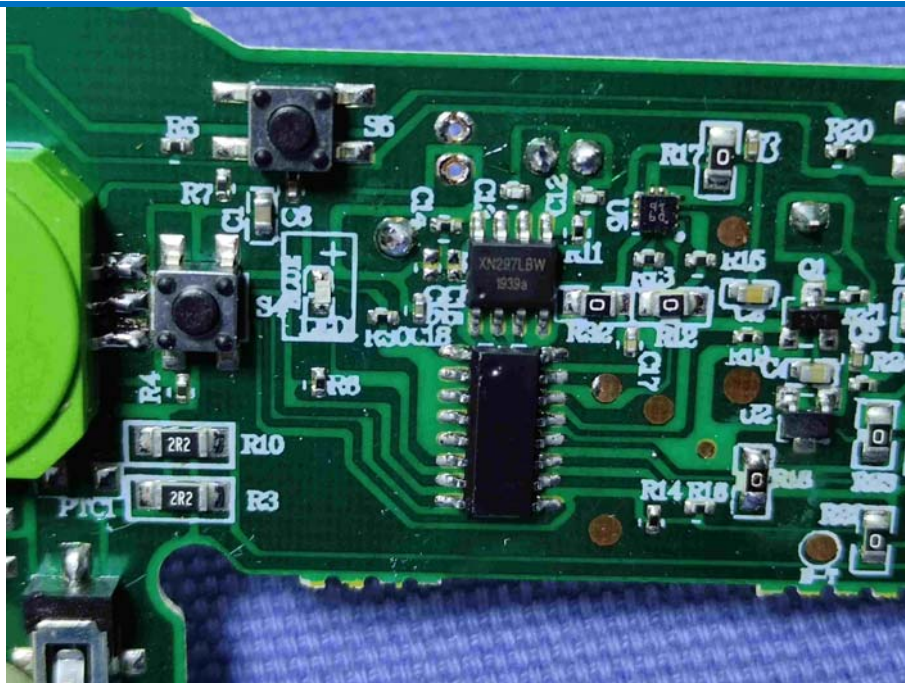






2.4G Antenna





The End