

FCC:

Federal Communication Commission Interference Statement

This device complies with Part 15 of the FCC Rules. Operation is subject to the following two conditions:

- (1) This device may not cause harmful interference, and
- (2) this device must accept any interference received, including interference that may cause undesired operation.

This equipment has been tested and found to comply with the limits for a Class B digital device, pursuant to Part 15 of the FCC Rules. These limits are designed to provide reasonable protection against harmful interference in a residential installation. This equipment generates, uses and can radiate radio frequency energy and, if not installed and used in accordance with the instructions, may cause harmful interference to radio communications. However, there is no guarantee that interference will not occur in a particular installation. If this equipment does cause harmful interference to radio or television reception, which can be determined by turning the equipment off and on, the user is encouraged to try to correct the interference by one of the following measures:

- Reorient or relocate the receiving antenna.
- Increase the separation between the equipment and receiver.
- Connect the equipment into an outlet on a circuit different from that to which the receiver is connected.
- Consult the dealer or an experienced radio/TV technician for help.

FCC Caution: Any changes or modifications not expressly approved by the party responsible for compliance could void the user's authority to operate this equipment.

Radiation Exposure Statement:

This device meets the government's requirements for exposure to radio waves.

This device is designed and manufactured not to exceed the emission limits for exposure to radio frequency (RF) energy set by the Federal Communications Commission of the U.S. Government.

IC:

This device complies with Industry Canada license-exempt RSS standard(s). Operation is subject to the following two conditions:

- (1) this device may not cause interference, and
- (2) this device must accept any interference, including interference that may cause undesired operation of the device.

Le présent appareil est conforme aux CNR d'Industrie Canada applicables aux appareils radio exempts de licence.

L'exploitation est autorisée aux deux conditions suivantes :

- (1) l'appareil ne doit pas produire de brouillage, et
- (2) l'utilisateur de l'appareil doit accepter tout brouillage radioélectrique subi, même si le brouillage est susceptible d'en compromettre le fonctionnement.

IC Notice:

This device complies with RSS-247 of Industry Canada.

Operation is subject to the condition that this device does not cause harmful interference.

This Class B digital apparatus complies with Canadian ICES-003.

(Cet appareil numérique de la classe B est conforme à la norme NMB-003 du Canada.)

Radiation Exposure Statement:

The product comply with the Canada portable RF exposure limit set forth for an uncontrolled environment and are safe for intended operation as described in this manual. The further RF exposure reduction can be achieved if the product can be kept as far as possible from the user body or set the device to lower output power if such function is available.

Déclaration d'exposition aux radiations:

Le produit est conforme aux limites d'exposition pour les appareils portables RF pour les Etats-Unis et le Canada établies pour un environnement non contrôlé.

Le produit est sûr pour un fonctionnement tel que décrit dans ce manuel. La réduction aux expositions RF peut être augmentée si l'appareil peut être conservé aussi loin que possible du corps de l'utilisateur ou que le dispositif est réglé sur la puissance de sortie la plus faible si une telle fonction est disponible.

CE:

Safety warning:

Do not use the device in the environment at too high or too low temperature.

The suitable temperature for the product and accessories is 32° to 86°F (0°-30°C)

BT-1100

Operating Frequency Range : 2400-2483MHZ

Max Output Power: 5.95dbm(EIRP)

Manufacturer: MEC Addheat Co.,Ltd.

Address: No.2-1 Alley 1 ,Ln. 116, Zhuang-Jing Rd. East Dist. Tainan City, Taiwan

Importer: Matsum Inc DBA Venture Heated Clothing

Address: 3621 Serpentine Drive, Los Alamitos, CA 90720, USA

E-mail: service@ventureheat.com

EU Regulatory Conformance

Hereby, MEC Addheat Co.,Ltd. Corporation declares that this device is in compliance with the essential requirements and other relevant provisions of Directive 2014/53/EU.

For the declaration of conformity, visit the Web site www.addheat.com/certification.



BT-1100 Series User's Guide

FCC ID:2AVJBT110040CHS
IC:27439-BT110040CHS

12V

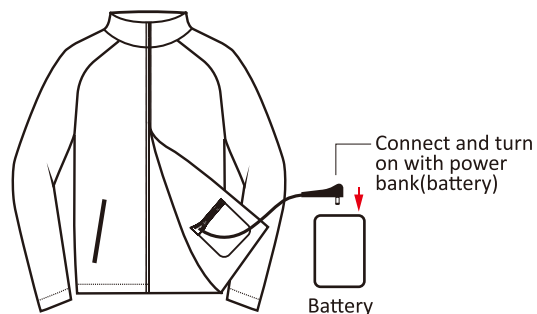
1 Download the AddHeat App



iOS/Android

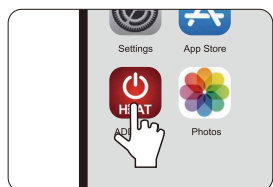


2 Connect battery

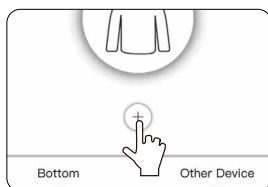


3 Control with the App

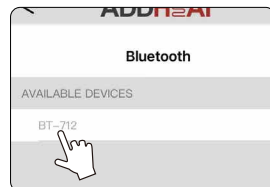
Step 1:
Turn on bluetooth
Open app.



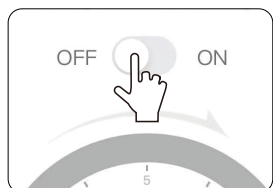
Step 2:
Pairing
Add a new device



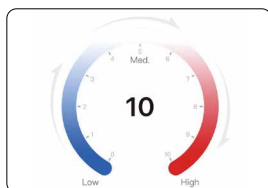
Step 3:
Select device
BT-1100



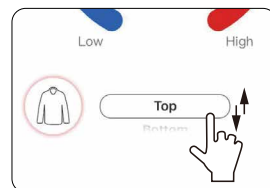
Step 4:
Turn **ON/OFF**



Step 5:
Tap to adjust temperature

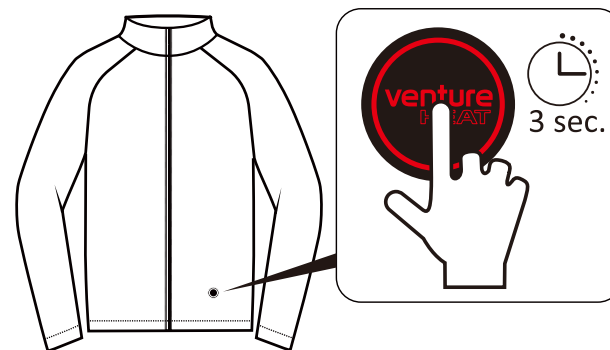


Step 6:
Easily switch between devices



Direct control by yourself

Step 1: Press and hold the button for **3 seconds** to power ON or OFF



Step 2: Click once to select heat level



Red
High Heat



White
Medium Heat



Blue
Low Heat

BT-1100 Series

BT-110030CHS/BT-110030C2BHS/BT-110030CG2BHS/BT-110040CHS
BT-110040C2BHS/BT-110040CG2BHS/BT-110050C2BHS/
BT-110050CG2BHS/BT-110060C2BHS/BT-110060CG2BHS
Bluetooth Heating Systems



FCC ID: 2AVJJBT110040CHS
IC: 27439-BT110040CHS

Powered by:



service@ventureheat.com
Toll Free 1-877-261-9477
www.ventureheat.com