

If this equipment does cause harmful interference to radio or television reception, which can be determined by turning the equipment off and on, the user is encouraged to try to correct the interference by one or more of the following measures:

- Reorient or relocate the receiving antenna.
- Increase the separation between the equipment and receiver.
- Connect the equipment into an outlet on a circuit different from that to which the receiver is connected.
- Consult the dealer or an experienced radio/TV technician for help.

The device has been evaluated to meet general RF exposure statement.  
The device can be used in portable exposure condition without restriction  
FCC ID: 2AVIY-LP-PT100

Any Changes or modifications not expressly approved by the party responsible for compliance could void the user's authority to operate the equipment

Dear customer:

Thanks for using Listener Pro product, to obtain better warranty service, please carefully read the following clauses.

1. This system must have been purchased from an authorized Listener Pro dealer and all warranty service must be performed by Listener Pro's service department. Any service not performed by Listener Pro will automatically void this warranty.

2. 30-Day Return of Any Reason: You may return your undamaged product and packaging within 30 days of purchase to receive a refund. Please return the unit in its original carton.

12-month Warranty for Quality-Related Issues. With proper care and maintenance, your products will operate trouble free for many years.

3. If the reason for return is not quality-related, the customer must pay the return shipping costs.

4. Items not covered: defects caused by normal wear of the product; damage or defects caused by abuse, neglect, accident, failure to connect or operate the unit in any way that does not comply with applicable technical or safety regulations, or improper repair, excessive heat or humidity, alteration or unreasonable. 5. When after-sales service is needed, please send us the relevant information according to this form.

## Warranty Form

Name		Email	
Address			
Purchase Date		Order ID	
Fault Description			

Listener Pro Technology Co., Ltd.

Email: [service@listenerpro.com](mailto:service@listenerpro.com)

Web: [www.listenerpro.com](http://www.listenerpro.com); [www.listener-pro.com](http://www.listener-pro.com)



# Listener Pro

— for Every Pro Listener —

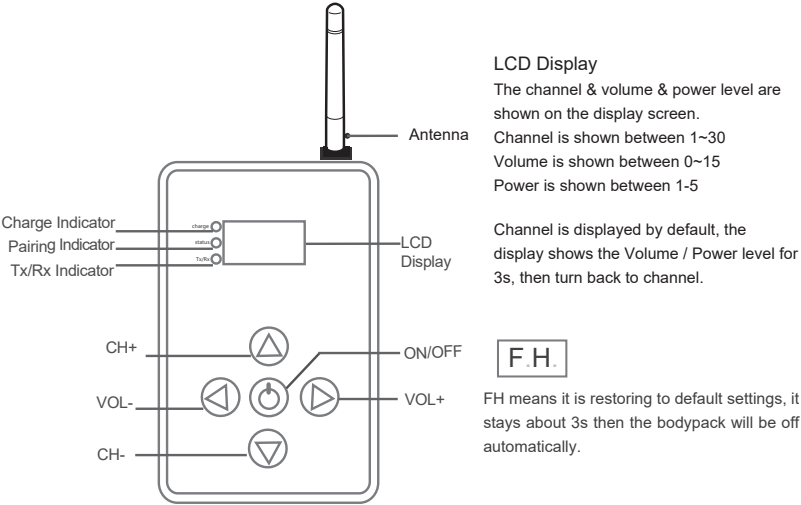
## LP-PT100 Product Manual



# LP-PT100 Professional Wireless Audio Transceiver

LP-PT100 is a 2.4GHz wireless digital audio transmission series products developed by Listener Pro Co., Ltd. This series of products has the characteristics of long transmission distance, high-fidelity sound quality of HDCD, strong anti-interference from UHF/WIFI/Bluetooth, and stylish and portable appearance. It can replace traditional complex wired sound equipment, achieve admirable listening effect.

## 1.1 Function



### Indicator

Indicator (power on)	ON		Flash		OUT	
	Tx	Rx	Tx	Rx	Tx	Rx
Charge	fully charged		low battery / charging		no mally	
Status	*	paired	*	pairing	*	*
Tx/Rx	Tx		*	*	Rx	

### Touch Screen

ON/OFF: Press for 3s to power on or off  
Channel +/-Channel -: Press "▲" for Channel Up, press "▼" for Channel Down, the channel can be set between 1 and 30.  
Volume +/-Volume-: Press "◀"for Volume Down, press "▶"for Volume Up, the volume level can be set between 0 and 15.(the volume of the local monitor audio couldn't be changed)  
Touch screen will light up after power on, and will go out when locked or no operations for 5s.

### No Sound

1. Wrong mode. Please check the Tx/Rx mode indicator light, this light of transmitter should light up, and others receivers should go out.
2. Match failed. Please check the "Tuning" indicator light of receivers. The receiver need rematch if it keeps flashing, make it on the same channel with the transmitter.
3. Wrong connection. Please check all audio cables are well and the connections are correct.
4. Out of range. Receivers too far away from the transmitter, the distance is out of work range. Please reposition receivers to closer area, or change a longer antenna.
5. Low battery. The battery maybe running out of power. Please fully charge before using.
6. Low volume level. The volume is too low, please turn up the audio source's volume, or turn up the audio through touch screen on bodypack. The Mic volume can be adjusted through the gain control knob on the back of the bodypack.

### Stop Working

1. the bodypack is stuck. Due to wrong operation or frequent operation in a short time, the unlocked unit's channel and volume couldn't be adjusted. Please press the "Reset hold" and restart the bodypack, it will return to the state it was in before stuck.
2. wrong setting. All default settings were changed and the bodypack couldn't return to work, the user needs to resume to default setting. Please lock the bodypack and press "CH+"&"CH-" for 3s, the screen will show "FH" during restore. The bodypack will automatic shutdown after restore finished.  
Default Channel--1  
Default Volume--10  
Default Power Level--3

## 3.3 After-sales service and Warranty

### Duration of Warranty

1. 30-day Return of Any Reason. You may return your undamaged product and packaging within 30 days of purchase to get refund. If it isn't quality-related, the customer must pay the shipping costs
2. At least 12-Month Warranty for Quality-Related Issues. We will take care of all quality-related issues with a replacement or refund.

Please contact us through these ways to resolve questions you meet about our products, you will get more rights:

- ❖ extend warranty period
- ❖ promotion code for next purchase

Email: [service@listenerpro.com](mailto:service@listenerpro.com)

Web: [www.listenerpro.com](http://www.listenerpro.com)

[www.listener-pro.com](http://www.listener-pro.com)

## FCC Warning

This device complies with part 15 of the FCC Rules. Operation is subject to the following two conditions: (1) this device may not cause harmful interference, and (2) this device must accept any interference received, including interference that may cause undesired operation.  
Any changes or modifications not expressly approved by the party responsible for compliance could void the user's authority to operate the equipment.

NOTE: This equipment has been tested and found to comply with the limits for a Class B digital device, pursuant to Part 15 of the FCC Rules. These limits are designed to provide reasonable protection against harmful interference in a residential installation. This equipment generates, uses and can radiate radio frequency energy and, if not installed and used in accordance with the instructions, may cause harmful interference to radio communications. However, there is no guarantee that interference will not occur in a particular installation.

## 2.5 Wireless Tour Guide System

This is designed especially for guides and groups. The guider can speak comfortably without shouting or distracting others nearby. Visitor can overcome noise & distance issues and listen directly to the tour guider's message.

Widely uses for: Tour guiding, meeting, teaching , simultaneous interpreting, corporate hospitality, field interpretation, Governmental Agencies, Houses of Worship, Conventions and Auditoriums, factory field trip, a walking tour, an exhibit guide, industrial site field trip, sermon interpretation, work-study programs, international conferences, translation guide, school audio visual laboratory, events for communities, family restaurants, Sale presentations, trade show, corporation event, any group setting...etc.

### System Operation:

1. Choose the operation mode-TX or RX, then turn on the transmitter.
2. Plug the headset microphone to the mic jack of the transmitter.
3. Turn on receivers, change to the same channel with the transmitter.
4. Plug earphone into the out jack of receiver, adjust the volume
5. Add more receivers to this wireless system.

### Packing List:

Transceiver	Headset microphone
Charging cable	Earphone
Antenna	Back clip

## 3.1 Warning

### For charging

1. not use the audio source device to charge for the bodypack at the same time, or you will hear the charge current sound.
2. Do not use computer, laptop to charge for the bodypack frequently, the charging current from these devices are too low.
3. You can take the following measures to extend the battery life:
  - Do not charging while working;
  - Reduce operation while charging;
  - Do not start or stop charging while working.
4. When the products are not used for a long time, please charge them once every 3 months, so that the batteries can be protected. (There is lithium battery inside the device, if it was not used or charged for a long time, the battery would be damaged.)

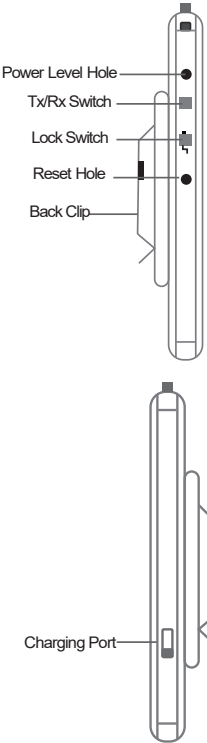
## 3.2 Trouble Shooting

### Faint Voice

1. Check the volume setting. You can increase the volume of the audio source, transmitter, receivers, and play devices.
2. The device power is too low, please use the "MIC"socket for Mic input.

### Noise

1. The transmitter is too closed to a strong magnetic field or wireless interference source, you can- Change the channel, Adjust the adapter's position and antenna's direction for the best reception.
2. Antenna is not on the transmitter, or bad antenna connection. You can install the antenna or check the antenna connection.
3. Please check the position of the microphone, do not point the microphone directly at the speaker.
4. Audio is from the device which is charging for the bodypack, such as laptop. Please change the charging device or powered by built-in battery, or you will hear the current sound from charging device.



### Power level hole

The power level can be set between 1~5. For Tx mode, the higher power level, the longer transmission range and the shorter working time; For Rx mode, the power level couldn't be adjusted.

### Tx/Rx Switch

Setup Tx/Rx mode before turn on, flick down for Tx mode, flick up for Rx mode. (please do not switch Tx/Rx after turn on, otherwise it would be shut down automatically)

### Lock Switch

To prevent accidental setting changes, flick this switch up to lock the bodypack, channel & volume & power ON/OFF couldn't be changed once locked.

### Reset hole

Restart the bodypack to the working state it was in last time.

### Charging port

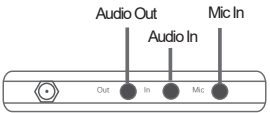
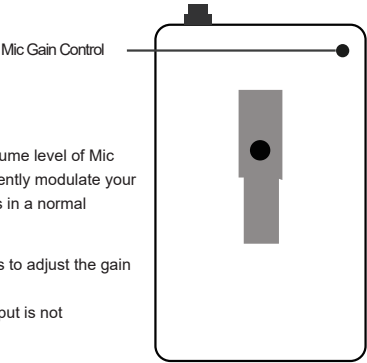
Powered by built-in battery, it can work for over 8~12 hours outdoors and to be charged by any usb devices. (please do not transfer audio from the charging device to the product at the same time)

### Mic Gain Control

The Vol Button on the Touch Screen will control both volume level of Mic and IN at the same time. This gain control can independently modulate your mic gain, raise your voice while background music keeps in a normal volume level.

If mic sound is too faint or loud, please follow these steps to adjust the gain accordingly:

1. Plug a 3.5mm connector into the IN jack first (audio input is not necessary).
2. Plug the microphone into the MIC jack.
3. Turn this knob clockwise to turn up the gain, turn anticlockwise to turn down the gain.

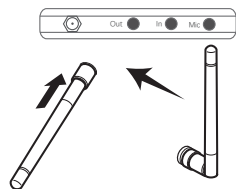


### Audio interfaces

Supports stereo audio input & output, 3.5mm mic input.

## 1.2 Quick Start

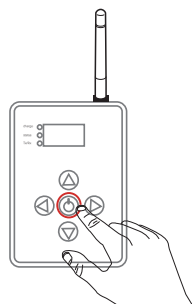
### ① install antenna



### ② set Tx/Rx mode before turn on

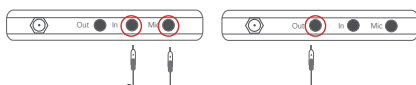


### ③ press power button for 3s to turn on

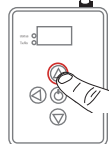


Display screen light up  
Touch screen light up  
Only Tx/Rx indicator light on a transmitter will light up  
Only Status indicator light on receivers will flash during pairing  
The charge light will flash if battery is running out, please charge for the battery first (charge for the working unit will damage the battery)

### ④ audio input and output

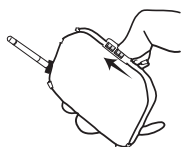


### ⑤ pair up



Tune the receiver to the same channel with the transmitter, the status light on receiver will light up after paired up successfully

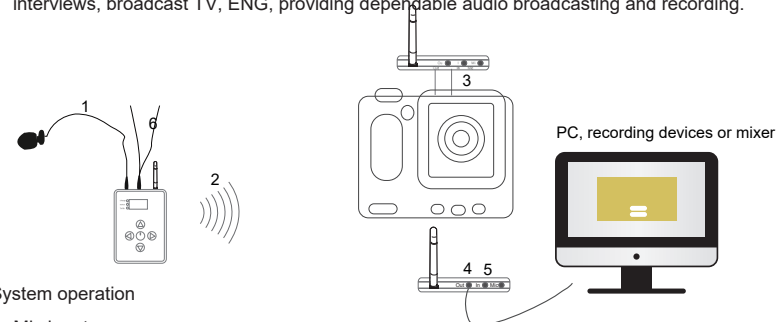
### ⑥ lock



Flip lock switch up, channel & volume & ON/OFF won't be changed by touch screen.

## 2.4 Wireless Lavalier Microphone System for Camera, Video, Interview

Our wireless microphone system including Lavalier microphone, wireless transmitter and receiver adapter, can help you get rid of the shackles of the cable, free your hands and speak freely for long range. Perfect fit for DSLR videography, field recording and interviews, broadcast TV, ENG, providing dependable audio broadcasting and recording.



### System operation

#### 1. Mic input

Turn on the transmitter, plug the lavalier/headset microphone into the MIC port. (Position lavalier and headset microphones so that clothing, jewelry, or other items do not bump or rub against the microphone.)

#### 2. Pair up

Tune receivers to the same channel with the transmitter.

Fix receivers to cameras or video recorders

Fix the receiver to the camera by back clip and hot-shoe(included)

#### 3. Fixed to camera

Fix receivers to cameras or video recorders by back clip and hot-shoe(included)

#### 4. Audio output

Connect receivers to camera, pc, or other recording devices with audio cable.

#### 5. Create mixed signal

Through auxiliary input, background music can be added into receivers and create mixed sound.

#### 6. Local monitor

Each transmitter has an auxiliary output for local monitor, the player can hear the instrument sound which will be send to bodypack receivers at the same time.

#### Note:

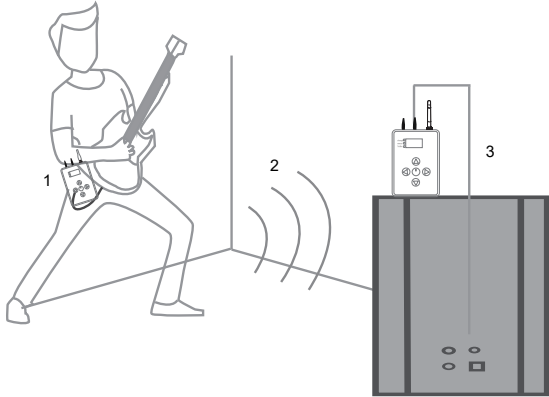
1. Please use the "MIC" socket not "AUX" socket for Mic input.
2. Do not point the microphone directly at speakers to prevent howling.
3. Use the microphone within narrow spaces, adjust the volume not too high.
4. The default gain for Mic is suitable for our lavalier microphone and can meet most requirements, such as speech, interview, teaching.
5. If you use another microphone for this system and this mic volume is too quiet even both transmitter and receivers are at max volume, you can turn the hidden knob in the back of the transmitter up to adjust mic gain.

### Packing List:

Transceiver	3.5mm audio cable	Microphone
Charging cable	3.5mm to RCA audio cable	Tripod stand
Antenna		Hot shoe mount
		Back clip

### 2.3 Wireless Transmitter and Receiver System for Instrument

Listener Pro combine the newest 2.4GHz wireless audio transmission technology with professional quality cardioid condenser microphones, designed for both Passive Pickup Instruments-Electric instruments and Active Pickup instruments. Offer the unparalleled wireless instrument system for professional performance and recording.



#### System operation

##### 1. Audio input

Connect the transmitter with Electronic Instruments straightly by aux cable and 6.35mm connector(included).  
Or connect the transmitter with the instrument pickup microphone (not included).

##### 2. Pair up

Tune receivers to the same channel with the transmitter.

##### 3. Audio output

Audio signal output from receivers to speakers, mixers or other music players.

##### 4. Adjust volume level

Adjust volume level of mic input & audio input through touch screen; adjust the volume level of mic by turn the transmitter's mic gain control knob, clockwise to turn up, anticlockwise to turn down the gain (please plugs a 3.5mm connector or aux cable into the "IN" jack of the transmitter first).

##### 5. Local monitor

Each transmitter has an auxiliary output for local monitor, the player can hear the instrument sound which will be send to bodypack receivers at the same time.

#### Note:

*When voice is faint, please check the volume level and adjust the instrument microphone best angle to pick up the voice first. Second, adjust the mic gain. Please plug a 3.5mm connector into the IN jack at the same time (audio input is not necessary)*

#### Packing List:

Transceiver	3.5mm audio cable	Tripod stand
Charging cable	3.5mm to RCA audio cable	Back clip
Antenna	3.5mm to 6.35mm audio connector	

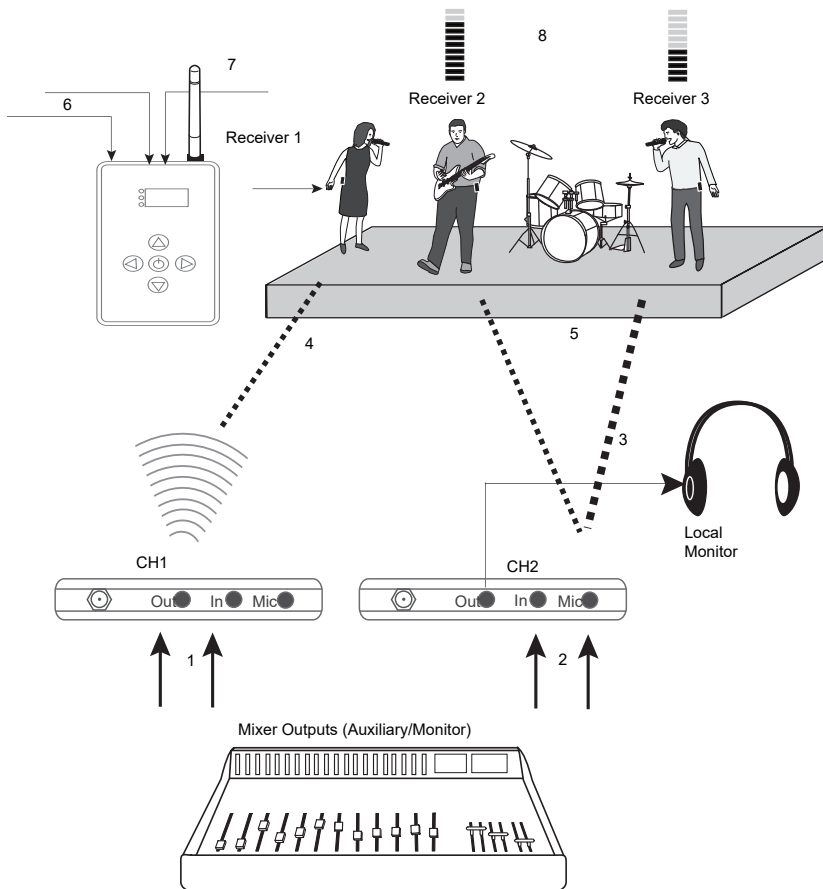
### 1.3 Technical Parameters

Parameter	Tx	Rx
Voltage	3.3-6V DC	
Current	Max 200mA	Max 150 mA
Temperature	- 15 - 65℃	
RF IC Frequency	2400 – 2483 MHz	
Modulation	FLRC	
Air Rate	2M bps	
Frequency stability	± 150KHz	
RF Range	≥300m	
Rx Sensitivity	-104dBm	
Input level	Max 1.0Vrms	
Input interface	Mic/Stereo audio	
Stereo Output Level 1	30mW RL = 32Ω	
Stereo Output Level 2	50mW RL = 16Ω	
Output Impedance	1 : 1	
Frequency Response	20 - 20000Hz (±1dB)	
Latency	<10 ms	
Sampling Ration	64k @ 16bit x 2	
S/N Ration	80 dB	
THD	0.3 % @1kHz	
Dynamic Range	90dB	
Channel Separation	70 dB	
Battery working time	8h	12h
Size	73.4*120.0*12.5mm	

## 2.1 Wireless In Ear Monitoring System

The in-ear monitoring system market was holistically boosted by the growing demand for concerts and music recordings, increasing live music shows and activities. More concerts and music festivals are using new technology in place of traditional wired ones.

This system is based on 2.4GHz technology, a practical wireless solution to provide consist sound whenever you go on stage while enhancing sound performances and freedom of movement. High-quality audio and stable transmission make it perfect for professional studio and live stage performance!



### 1. Create monitor mixes

Mic and stereo audio can be sent to the bodypack transmitter and mixed.

### 2. Multiple systems

When several performers in different groups, transmitters should be on different frequency to send different mixes. Performers tune each bodypack receivers to the frequency for their group.

### 3. Local monitor

Each transmitter has an auxiliary output to monitor the mixed signal, this local signal is identical to the signal send to bodypack receivers

### 4. Pair up

Tune the receiver to the same channel with the transmitter, wireless signal will be sent to the performer.

### 5. Unlimited receivers

Expanded this system by using additional bodypack receivers tuned to the same transmitter.

### 6. Personalize mixing

Each bodypack receiver has auxiliary stereo audio input and mic input, it can add different signals input to get personalize mixing.

### 7. Audio output

Connect receivers to earphones, headphones, speakers or other music players.

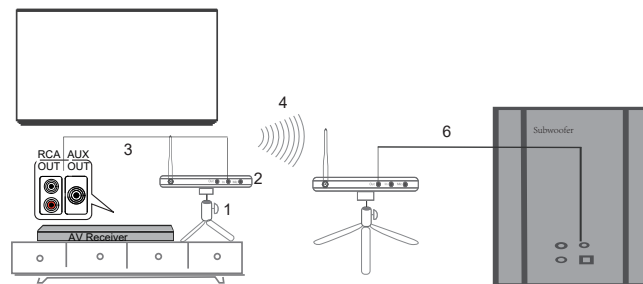
### 8. Independent volume adjustment

Adjust output audio volume of each bodypack receiver.

<b>Packing List:</b>	Transceiver	3.5mm audio cable	Earphone
	Charging cable	3.5mm to RCA audio cable	Tripod stand
	Antenna	3.5mm to 6.35mm audio connector	Back clip

## 2.2 Wireless Audio Transmitter and Receiver for Speakers/Subwoofer

Speakers/Subwoofers are often the largest component in any music system or home theater system, so eliminate cable clutter and expand speaker's placement is a challenge. This system is designed to reduces speaker cable clutter without sacrificing performance, and extend the wireless distance coverage.



1. Install back clip, tripod stands, 3dB or 5dB antenna.
2. Choose the operation mode-TX or RX, turn them on
3. Connect the transmitter to audio source (iPhone, TV, AV etc.) with a 3.5mm / RCA audio cable
4. Adjust the transmitter and receivers on the same channel
5. Put receivers on appropriate locations within work range (up to 1000ft in open area)
6. Connect receivers to music devices, such as power speaker, amplifier, headphones.

<b>Packing List:</b>	Transceiver	3.5mm audio cable	Tripod stand
	Charging cable	3.5mm to RCA audio cable	Back clip
	Antenna		