

User Instruction

goodnature®

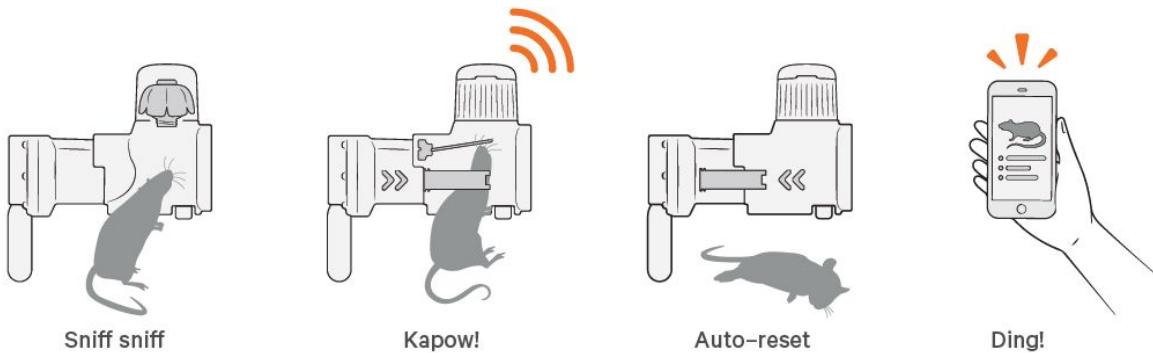
Chirp for A24

Smart trapping
made easy



DESCRIPTION OF PRODUCT

Chirp for A24 is a blue tooth transmitter for goodnature traps. The Chirp is battery operated using a CR2477 3V button cell battery. This battery needs to be replaced every 3-5 years. The Chirp detected trap activity / strikes and communicates this to an app on the your mobile device via Bluetooth.





24 rats & stoats down & counting

The A24 trap automatically kills 24 rats, stoats, weasels or mice – one after the other – before you need to replace the gas canister. It's easily attached to a tree trunk or wooden post in your backyard and automatically releases fresh lure for 6 months.



Chirp talks straight to your smartphone – as easy as that

Chirp is smart. Connect using our App so that every time your trap kills a pest you'll be notified on your smartphone via Bluetooth™. It will let you know when the pest was killed, how many strikes are left before you need to replace the gas canister and when to change the lure.



Share trapping data with your community & friends

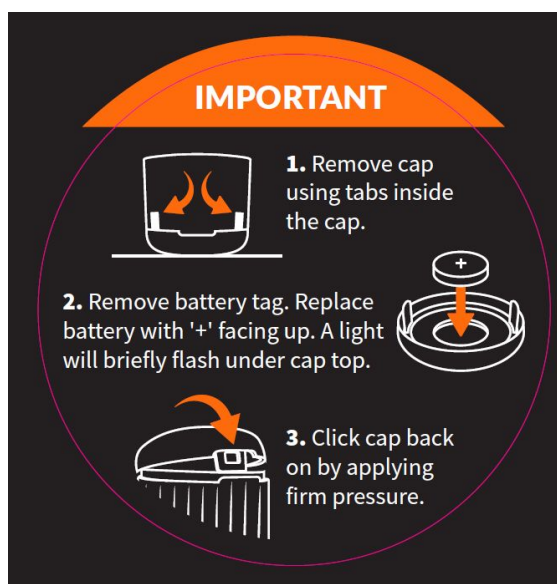
Chirp works 24/7 and is very social. Sharing data with others using our App means they can maintain your trap and monitor your success too. Chirp also lets you see how your success is making a difference. Thank you for doing your bit to keep our pests under control.

DESCRIPTION OF SOFTWARE AND FREQUENCY BANDS

A Bluetooth radio transceiver operates at the standard Bluetooth frequency between 2402 and 2480 MHz. The transmission range is approximately 50 meters. The highest unintentional frequency transmitted is 64 MHz.

HOW TO USE

Install/Replace Battery:



Download App:

Your instructions are in the App

All A24 with Chirp installation instructions are in the App
Download the App for our step-by-step guide



Download the App



Scan the QR Code

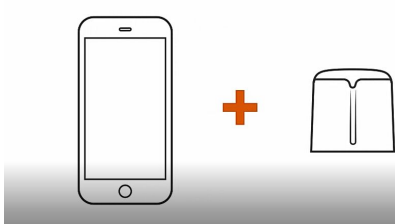


Search Goodnature Chirp



Pairing:

A.

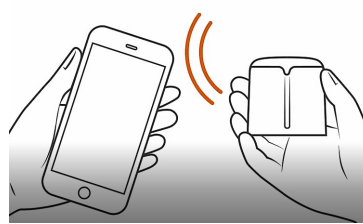


B.

**Shake until red
light flashes**

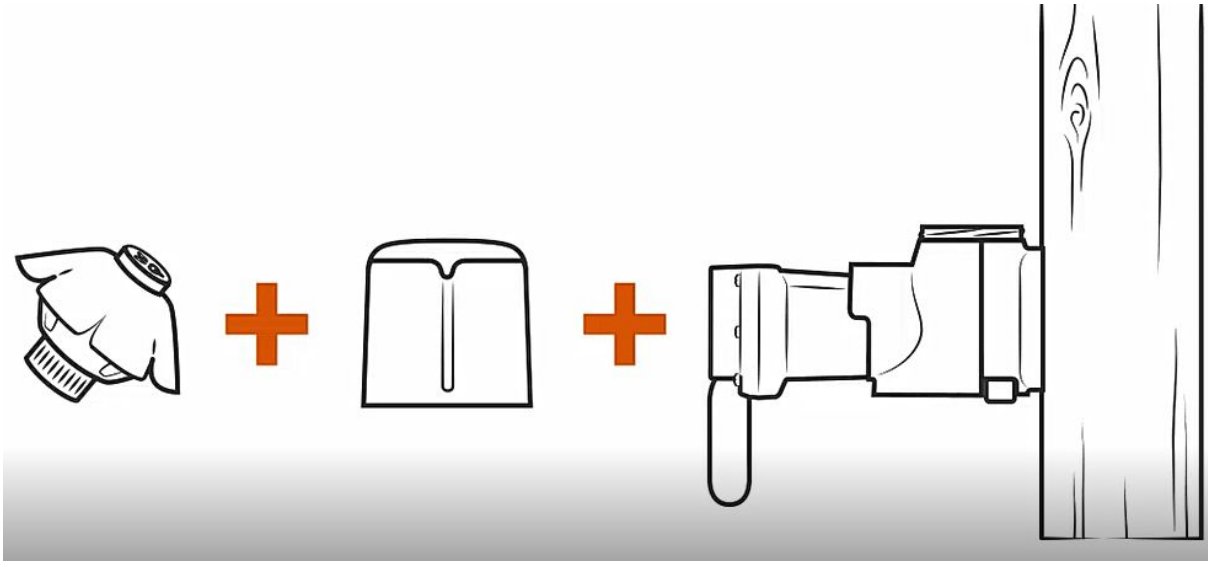


C.

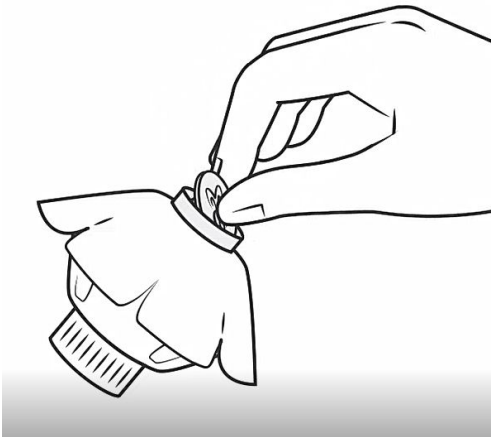


Installing to A24 Trap:

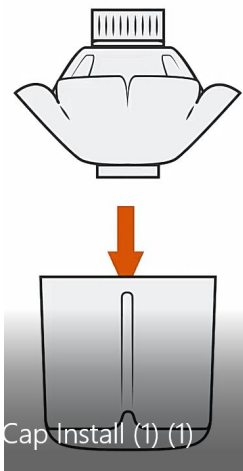
A.



B.



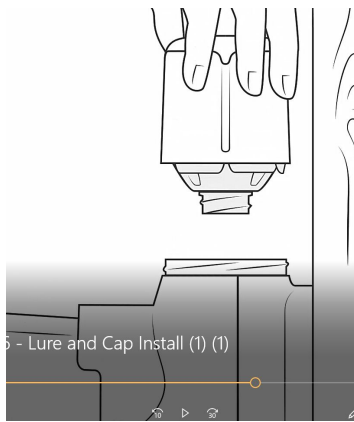
C.



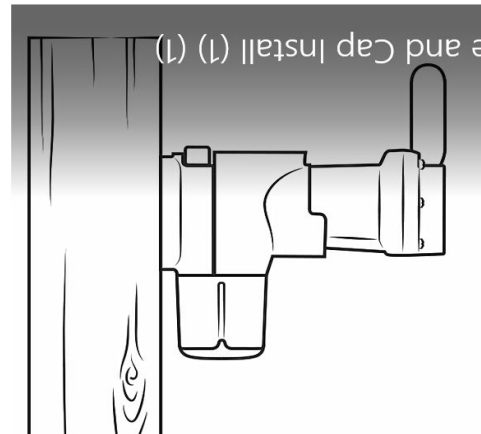
D.



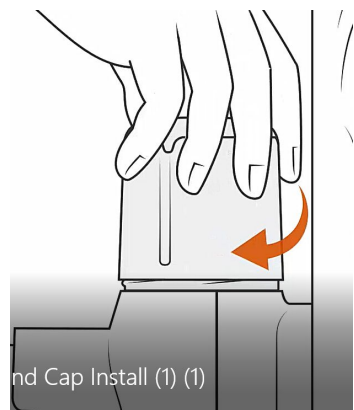
E.



G.



F.



SAFETY INFORMATION

Ambient temperature range of product: -20°C and 50°C

WARNINGS

- USE ONLY Goodnature CO₂ Canisters. Use of other canisters will void warranty
 - NEVER use a petroleum-based lubricant in your trap
 - ALWAYS store CO₂ Canisters below 49°C
 - NEVER leave CO₂ Canisters in a vehicle on a hot day
 - ALWAYS dispose of used CO₂ Canisters responsibly
 - NEVER crush CO₂ Canisters or put in a fire
 - NEVER allow children to play with or around traps
 - NEVER submerge your trap
 - NEVER use a damaged trap
 - NEVER modify your trap
 - ALWAYS act responsibly
 - USE ONLY as recommended in this quick start guide
 - ALWAYS wear appropriate safety gear when setting and firing a trap
 - DO NOT install the CO₂ Canister until the trap is correctly mounted
 - ALWAYS treat your trap as LIVE
 - ONLY test fire your trap as directed: see step 8 "TEST-FIRE YOUR TRAP" in the "INSTALLING YOUR TRAP" section,
 - ALWAYS release residual pressure from the trap after removing the CO₂ Canister and before removing it from the tree mount: See step 8 "TEST-FIRE YOUR TRAP" in the "INSTALLING YOUR TRAP" section,
 - ALWAYS remove the CO₂ Canister and release residual pressure before removing the trap from its mounted position
 - ALWAYS remove the CO₂ Canister and release residual pressure before moving the trap
 - ONLY set traps at the height recommended in this guide and be considerate of others when choosing the traps location
 - NEVER put hands or objects in the entrance of the trap
 - NEVER fire and re-fire the trap in quick succession
 - Contains gas under pressure; may explode if heated
 - Protect from sunlight. Store in a well-ventilated place
- This device operates within the 2.4GHz frequency band
The maximum radio-frequency power transmitted by this device is 4dB



The symbol on the product or its packaging indicates that this product must not be disposed of with your other household waste. Instead, it is your responsibility to dispose of your waste equipment by handing it over to a designated collection point for the recycling of waste electrical and electronic equipment. The separate collection and recycling of your waste equipment at the time of disposal will help conserve natural resources and ensure that it is recycled in a manner that protects human health and the environment. For more information about where you can drop off your waste for recycling, please contact your local authority, or where you purchased your product.



Caution

Risk of explosion if the battery is replaced by an incorrect type. Disposal of a battery into fire or a hot oven, mechanically crushing or cutting of a battery, can result in an explosion. Leaving a battery in an extremely high temperature environment can result in an explosion or the leakage of flammable liquid or gas. A battery subjected to extremely low air pressure may result in an explosion or the leakage of flammable liquid or gas.

IMPORTANT INFORMATION

FCC Statement (USA Only)

This equipment has been tested and found to comply with the limits for a Class B digital device, pursuant to Part 15 of the FCC Rules. These limits are designed to provide reasonable protection against harmful interference in a residential installation. This equipment generates, uses and can radiate radio frequency energy and, if not installed and used in accordance with the instructions, may cause harmful interference to radio communications. However, there is no guarantee that interference will not occur in a particular installation. If this equipment does cause harmful interference to radio or television reception, which can be determined by turning the equipment off and on, the user is encouraged to try to correct the interference by one or more of the following measures:

- Reorient or relocate the receiving antenna.
- Increase the separation between the equipment and receiver.
- Connect the equipment into an outlet on a circuit different from that to which the receiver is connected.
- Consult the dealer or an experienced radio/TV technician for help

Note: Changes or modifications not expressly approved by the manufacturer responsible for compliance could void the user's authority to operate the equipment.

This device complies with Part 15 of the FCC Rules. Operation is subject to the following two conditions: (1) this device may not cause harmful interference and (2) this device must accept any interference received, including interference that may cause undesired operation

This equipment complies with FCC radiation exposure limits set forth for an uncontrolled environment. This transmitter must not be co-located or operating in conjunction with any other antenna or transmitter.

RSS Statement (Canada Only)

This device complies with Industry Canada license-exempt RSS standard(s). Operation is subject to the following two conditions: (1) this device may not cause interference, and (2) this device must accept any interference, including interference that may cause undesired operation of the device.

Le présent appareil est conforme aux CNR d'Industrie Canada applicables aux appareils radio exempts de licence. L'exploitation est autorisée aux deux conditions suivantes : (1) l'appareil ne doit pas produire de brouillage, et (2) l'utilisateur de l'appareil doit accepter tout brouillage radioélectrique subi, même si le brouillage est susceptible d'en compromettre le fonctionnement.

This equipment complies with IC RSS-102 radiation exposure limits set forth for an uncontrolled environment.

Cet équipement est conforme aux limites d'exposition aux radiations IC CNR-102 établies pour un environnement non contrôlé.

EU Statement (Europe Only)

**You must adhere to
installation instructions
provided in the Goodnature
Chirp App when handling
your trap.**

SIMPLIFIED EU DECLARATION OF CONFORMITY (ORIGINAL)

Hereby, Goodnature Limited declares that the radio
equipment type "Chirp" Bluetooth Transmitter

is in compliance with Directive 2014/53/EU.

The full text of the EU declaration of conformity is available at
the following internet address:

goodnature.co.nz/terms-and-conditions

EC DECLARATION OF CONFORMITY OF MACHINERY (ORIGINAL)

This declaration relates exclusively to the machinery in the
state in which it was placed on the market, and excludes
components which are added and/or operations carried out
subsequently by the final user.

Product: Rat and Stoat Trap, A24; including tree mount kit and
blocker accessories

Manufacturer: Goodnature Limited, 8 Horner Street, Newtown,
Wellington 6021, NEW ZEALAND

Technical File Authorised owner: Craig Bond, 8 Horner Street,
Newtown, Wellington 6021, NEW ZEALAND

This product fulfils all relevant provisions of the Machinery
Directive. Signed for an on behalf of: Goodnature Limited,
Wellington

Place and date of Issue: Goodnature Limited, 8 Horner Street,
Newtown, Wellington 6021, NEW ZEALAND, 28th June - 2019

Name, Function, Signature:
Craig R. Bond, Director

