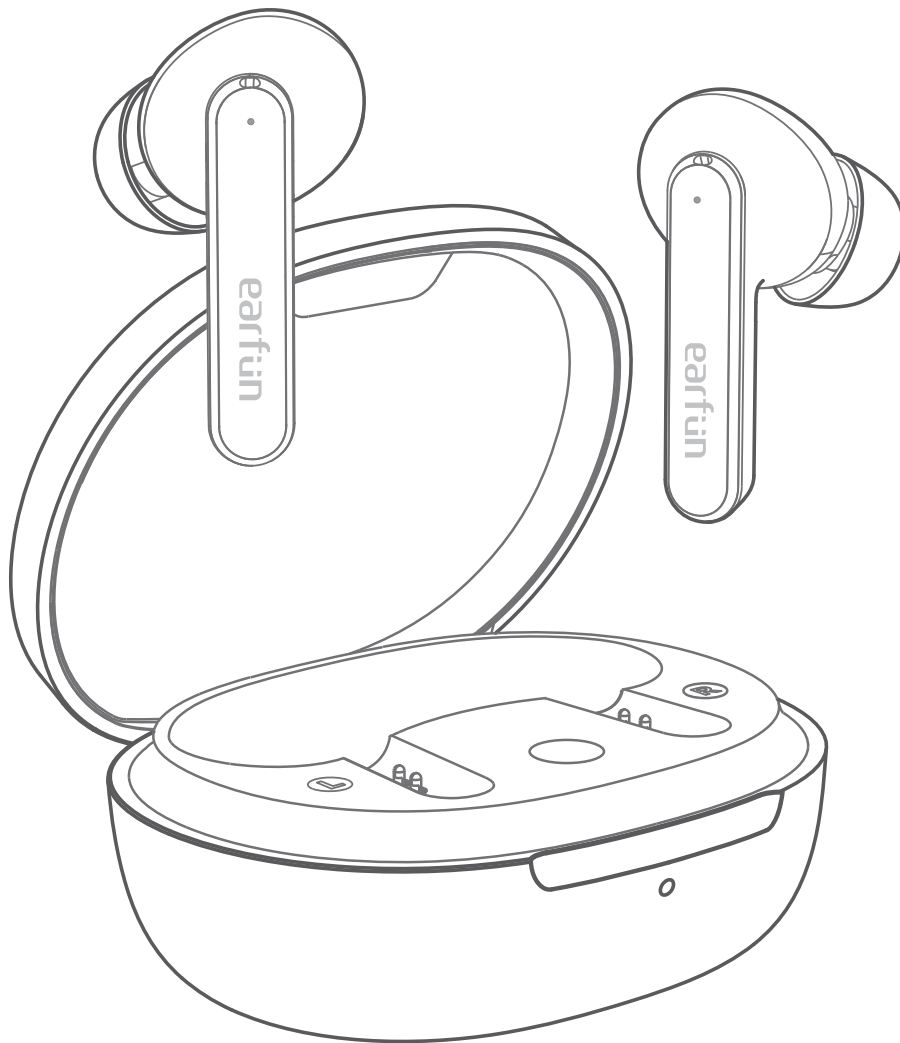


earfun

EarFun Air S

ANC Wireless Earbuds



BC



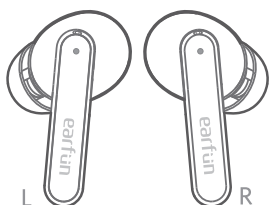
Qualcomm®
aptX™

User Manual

English	- - - - -	01
Deutsch	- - - - -	11
Français	- - - - -	22
Español	- - - - -	33
日本語	- - - - -	44

1 What's in the Box

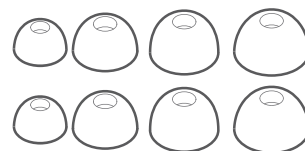
EarFun Air S



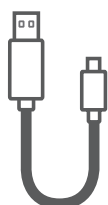
Charging Case



Ear Tips (XS, S, M, L)



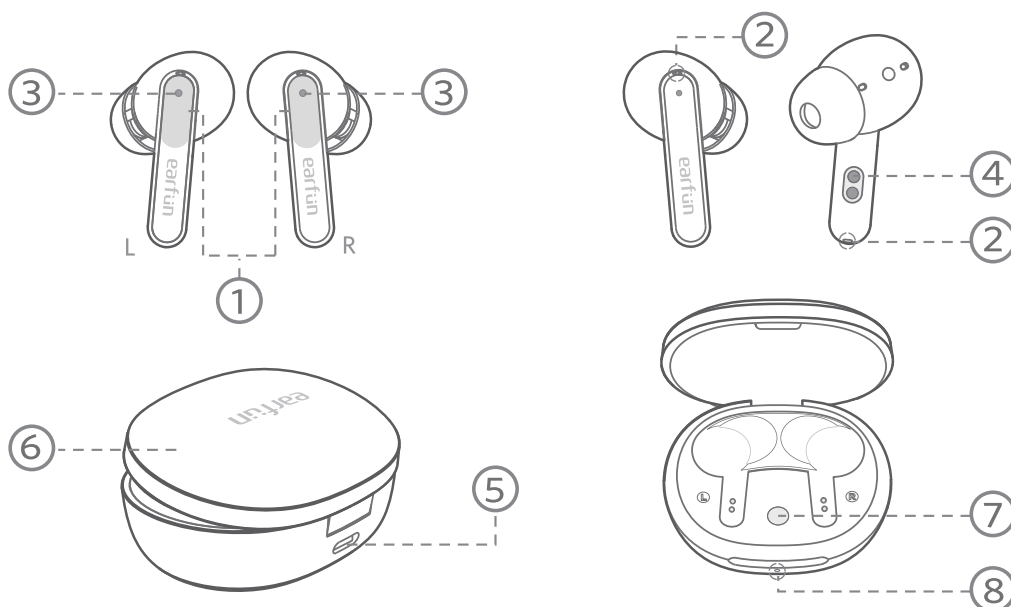
USB-C Cable



User Manual



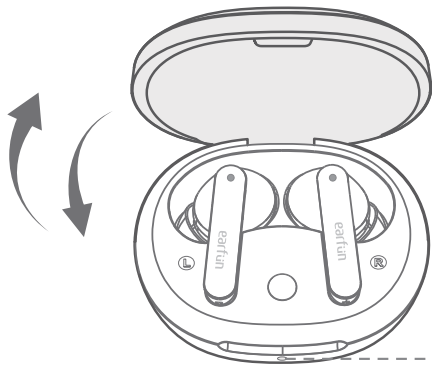
2 Product Diagram



- ① Touch control zone
- ② Microphone
- ③ Earbuds LED indicator
- ④ Charging contactor
- ⑤ USB-C charging port
- ⑥ Charging case
- ⑦ Charging case button
- ⑧ Charging case indicator

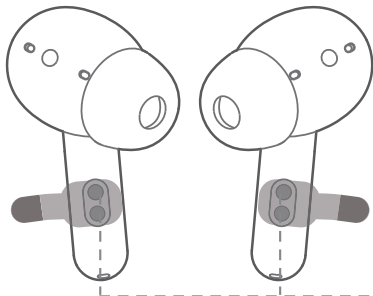
③ Charging

- 1.Remove the insulating film on the earbuds before use this device.
- 2.Open or close the charging case to activate the case battery level LED indicator.
- 3.Place earbuds back into the charging case and the earbuds will start charging.
- 4.Fully charge both the earbuds and the charging case before the first-time usage.
- 5.Fully dry off the earbuds and the USB port before charging.



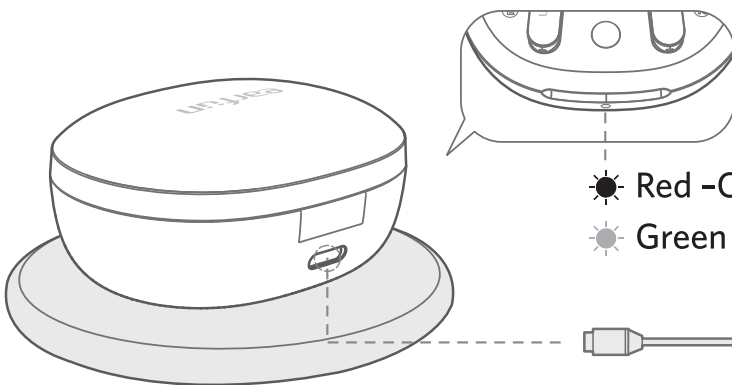
Battery level :

- Green > 30%
- Orange < 30%
- Red < 10%
- Red flash < 5% Please charge



Remove the insulating film on the earbuds before use this device.


- Connect USB-C cable for charging
- Wireless charging(not included)



- Red -Charging
- Green -Charging complete

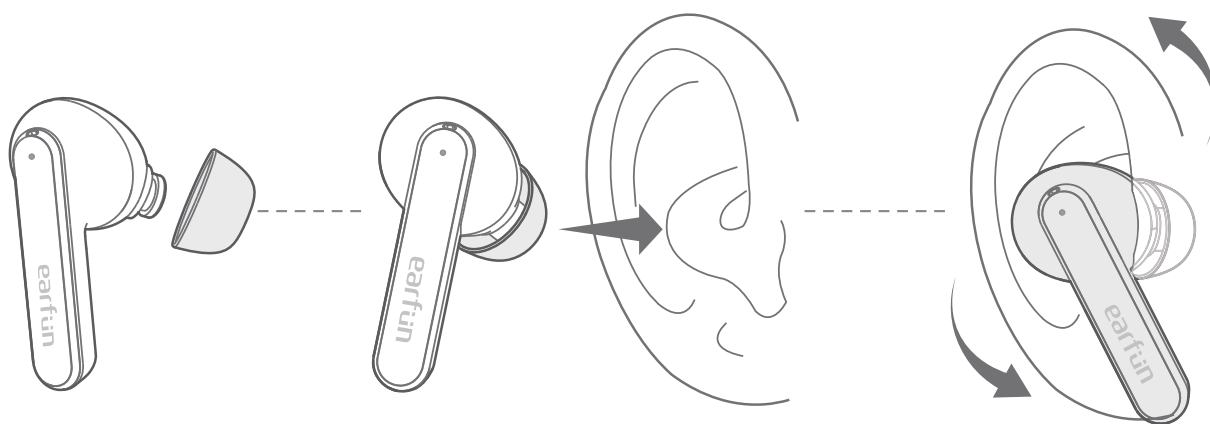


④ Specifications

Bluetooth version	V5.2
Bluetooth frequency	2.402GHz-2.480GHz
Bluetooth transmitted power	<7dBm (for EU)
Bluetooth profile	A2DP, AVRCP, HFP, HSP
Maximum working range	15m(without obstacle)
Battery capacity	40mAh x 2(earbuds); 500mA(charging case)
Charging time	1 hour(for earbuds); 2 hours(for charging case via USB-C); 3.5 hours(for charging case via wireless charger)
Playtime	ANC OFF--Up to 6 hours, Totally 30 hours with the charging case; (varies by volume level and audio content) ANC ON--Up to 5 hours, Totally 25 hours with the charging case; (varies by volume level and audio content)
Input	5V  1A
Dimensions	56mmx65mmx31mm
Weight	52g

⑤ How to Fit

Note: it may affect the noise cancelling effect if you are not wearing the earbuds correctly.



1. Take tip fit test to ensure the correct size.
2. Identify the left and right earbuds.
3. Place the earbuds in your canal and rotate to lock.

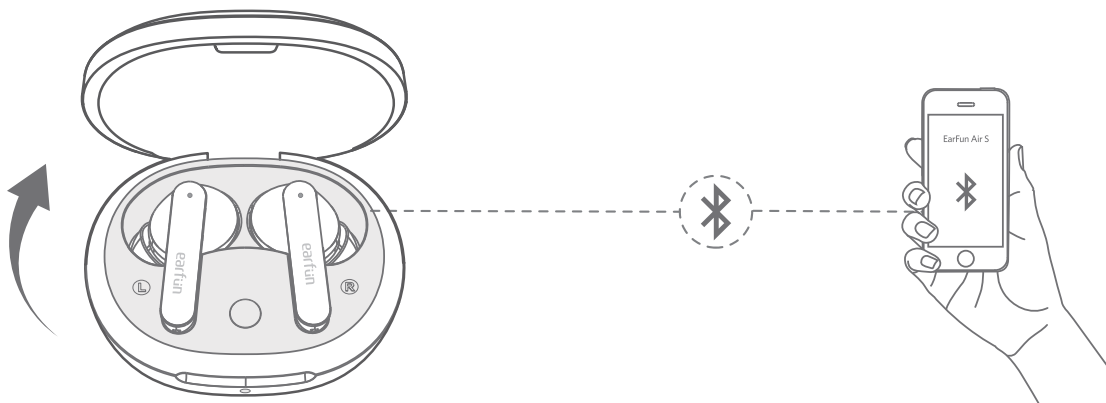
⑥ Pairing

1. First-time Pairing with Device

Step 1: Open the charging case, the earbuds will automatically power on and enter pairing mode.

Step 2: Activate Bluetooth on your Bluetooth-enabled device and search for other Bluetooth devices.

Step 3: Select “EarFun Air S” from the list of Bluetooth devices shown (if a password is needed, type ‘0000’).



Notes:

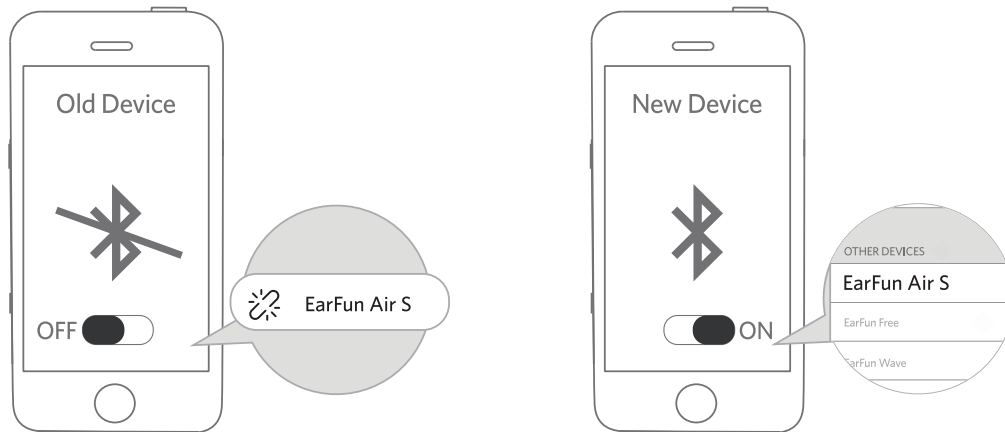
- The earbuds will automatically connect with the device they were last paired with when the case is open.
- Each earbud could be used independently.

2. Connect to a New Device

Option A

Step 1: Unpair the earbuds from the Bluetooth-enabled device that's connected. The earbuds will disconnect from the current device and enter into pairing mode for another pair.

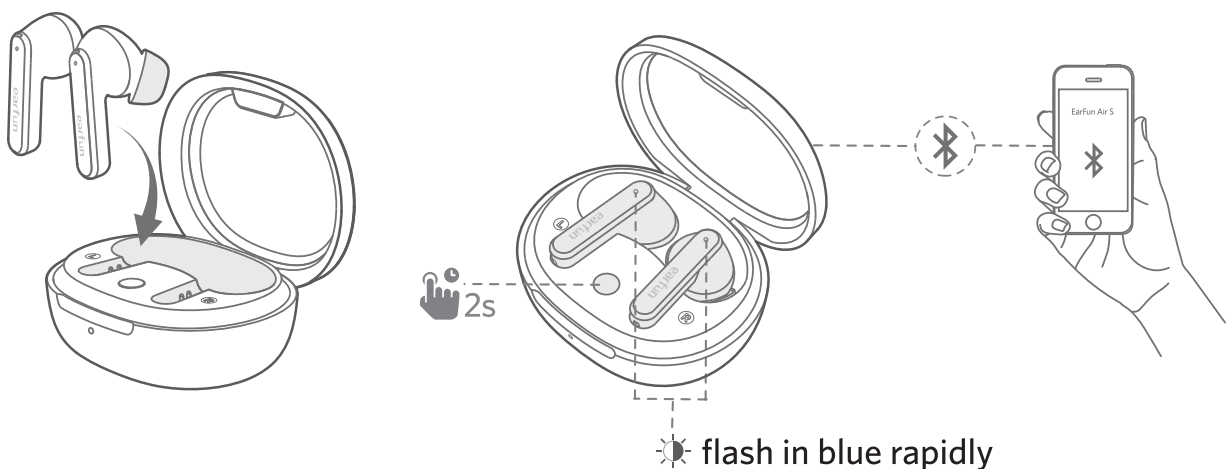
Step 2: Search on the new device and connect.



Option B

Step 1: Place both earbuds back into the charging case and make sure they are being charged, keep the cover open and then press and hold the charging case button for 2 seconds until the LED indicators on earbuds flash in blue rapidly.

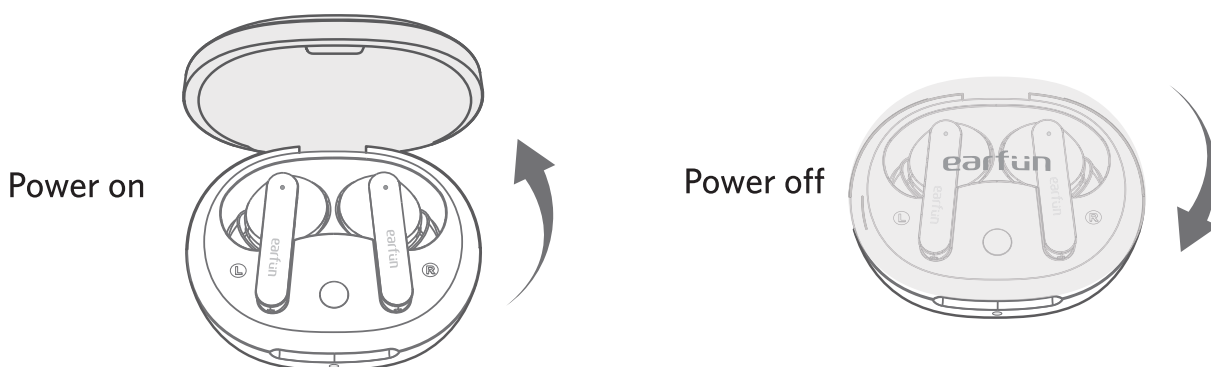
Step 2: Search on the new device and connect.



7 Functions

Power on/off

Open the charging case, the earbuds will automatically power on. Place the earbuds back into the charging case. Close the case and the earbuds will automatically power off.

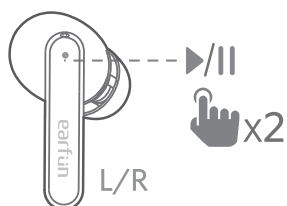


Note:

If the earbuds is not connected to any device, it will automatically power off after 10 minutes for save the battery life.

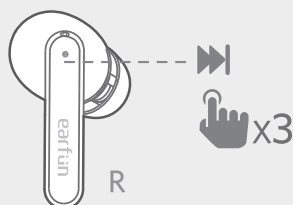
Playing Music

Play/Pause



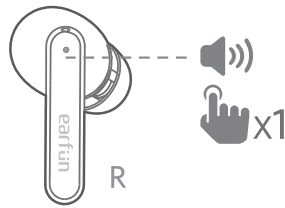
Tap twice (L/R)

Next track



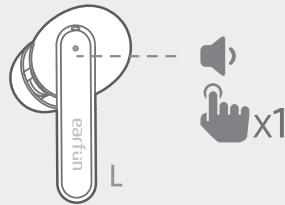
Tap triple (R)

Volume up



Tap once (R)

Volume down

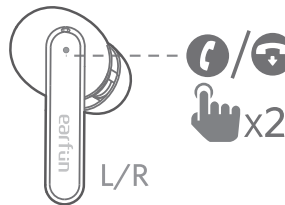


Tap once (L)



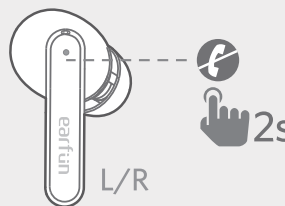
Hands Free Conversation

Answer/End a call



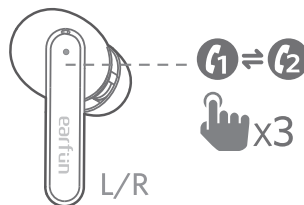
Tap twice (L/R)

Reject a call



Tap and hold for 2s (L/R)

Answer and transfer two calls

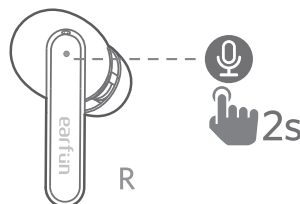


Tap triple (L/R)



Activate The Voice Assistant

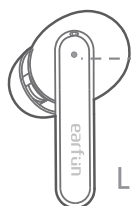
Voice assistant



Tap and hold for 2 seconds (R)

Noise cancelling control

Noise Cancelling/
Ambient sound/
Normal



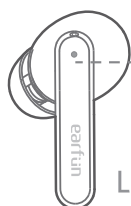
2s

Tap and hold for 2 seconds (L)



Game Mode

Game Mode ON/OFF



x3

Tap triple (L)

Note:

- Turn on the game mode can drop latency to as low as 100ms and improve the gaming and video experience, but it will shorten the connection distance. We suggest you turn off the game mode when you use the earbuds for music.
- The normal mode provide latency about 200ms.
- Bluetooth technology can't eliminate latency.

Earbuds LED Indicator

Power on

Blue indicator flashes 1 second

Power off

Red indicator flashes 1 second

Pairing mode

Indicator flashes blue

Successfully connected

Indicator goes out

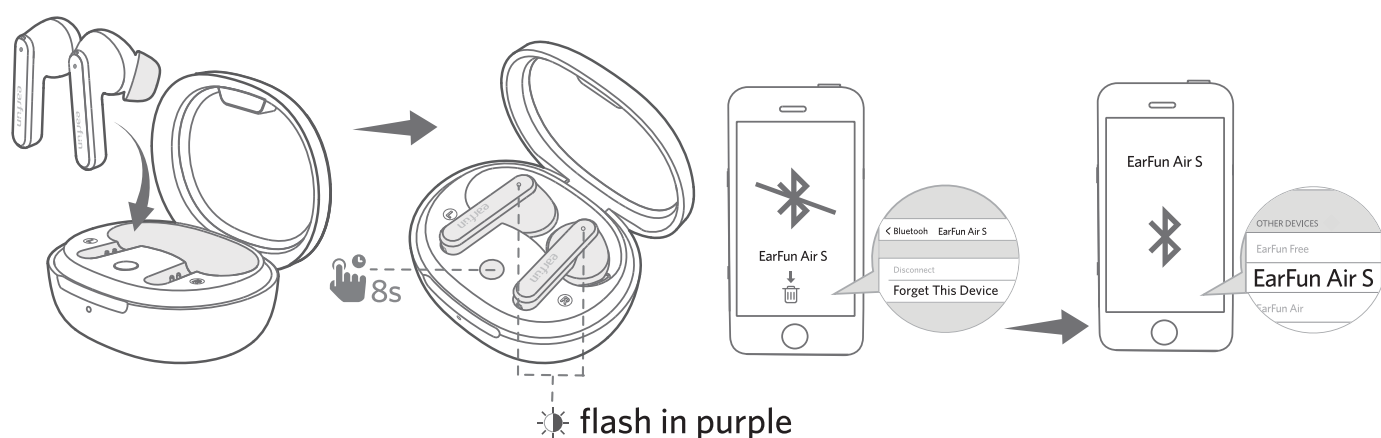
Factory reset

Indicator flashes in purple

⑨ Reset and Reconnecting

If you fail to build connection between two earbuds, or between earbuds and Bluetooth device, please try the following steps:

1. Place both earbuds into the charging case.
2. Keep the charging case open, then press and hold the charging case button for at least 8s until both earbuds flash in purple, then earbuds have been reset successfully.
3. Delete the old connection from the Bluetooth device and reconnect "EarFun Air S".



⑩ Troubleshooting

Q: Can I use both earphones separately?

A: Yes, each earbud could be used independently.

Q: The earphones are turning on, but it doesn't connect to my device?

A: To connect the earbuds to your device, please check if the Bluetooth of the device is on at first, then select 'EarFun Air S' on the Bluetooth list to get paired. If the earbuds still can't connect to your device, please try to reset it, or contact our customer support.

Q: Why the connection is not stable and cuts out intermittently?

A: Please make sure there are no objects between the earphones and your Bluetooth device, and make sure there is no radio or WIFI interference nearby.

Q: What is the range of Bluetooth earphones?

A: Bluetooth earphones have maximum range of 49 feet (15m, no obstacle). However, the actual range will depend on usage and environment.

Q: Is there volume control on the earphones?

A: Yes, touch L earbud once decreases the volume and touch R once could increase it.

Q: My earphones will not switch on.

A: Please recharge it and make sure it has enough battery power. If it is fully charged and still nothing happens or if you are not able to charge the unit, please contact our customer support for warranty cover.

Q: Is the charging case waterproof?

A: No, the earbuds are sweat & waterproof, but the charging case is not waterproof.

Q: Will the earbuds shut off automatically?

A: The earbuds will remain on as long as they are connected to a device. If no audio is in use, they will enter power-saving mode and wake up once audio is played. If the earbuds are not connected with any devices, they will automatically shut off in 10 minutes.

Customer Service

For FAQs and more information:

Please Email to: service@myearfun.com

www.myearfun.com

FCC Statement

Changes or modifications not expressly approved by the party responsible for compliance could void the user's authority to operate the equipment.

This equipment has been tested and found to comply with the limits for a Class B digital device, pursuant to Part 15 of the FCC Rules. These limits are designed to provide reasonable protection against harmful interference in a residential installation. This equipment generates uses and can radiate radio frequency energy and, if not installed and used in accordance with the instructions, may cause harmful interference to radio communications. However, there is no guarantee that interference will not occur in a particular installation. If this equipment does cause harmful interference to radio or television reception, which can be determined by turning the equipment off and on, the user is encouraged to try to correct the interference by one or more of the following measures:

- Reorient or relocate the receiving antenna.
- Increase the separation between the equipment and receiver.
- Connect the equipment into an outlet on a circuit different from that to which the receiver is connected.
- Consult the dealer or an experienced radio/TV technician for help.

This device complies with part 15 of the FCC rules. Operation is subject to the following two conditions:

(1) This device may not cause harmful interference.

(2) This device must accept any interference received, including interference that may cause undesired operation.

RF Exposure Compliance

This equipment complies with FCC radiation exposure limits set forth for an uncontrolled environment. This transmitter must not be co-located or operating in conjunction with any other antenna or transmitter.

CAUTION

Risk of explosion if the battery is replaced by an incorrect type

Disposal of a battery into fire or a hot even, or mechanically crushing or cutting of a battery, that can result in an explosion; Leaving a battery in an extremely high temperature surrounding environment that can result in an explosion or the leakage of flammable liquid or gas; A battery subjected to extremely low air pressure that may result in an explosion or the leakage of flammable liquid or gas.



To prevent possible hearing damage, do not listen at high volume levels for long periods.



The Bluetooth word mark and logos are registered trademarks owned by Bluetooth SIG, Inc. and any use of such marks by Earfun Technology (HK) Limited is under license.

Qualcomm aptX is a product of Qualcomm Technologies, Inc. and/or its subsidiaries.

Qualcomm is a trademark of Qualcomm Incorporated, registered in the United States and other countries. aptX is a trademark of Qualcomm Technologies International, Ltd., registered in the United States and other countries.

Other trademarks and trade names are those of their respective owners.

EU Declaration of Conformity

Earfun Technology (HK) Limited hereby declares that this equipment is in compliance with the essential requirements and other relevant provisions of Directive 2014/53/EU and RoHS 2011/65/EU Directive. The declaration of conformity may be consulted in the support section of our Web site, accessible from www.myearfun.com

UK Declaration of Conformity

Hereby, [Earfun Technology (HK) Limited] declares that the radio equipment type [TW201] is in compliance with UK Radio Equipment Regulations (SI 2017/1206). The full text of the declaration of conformity is available at the following internet address: www.myearfun.com

ISED Compliance Statements

This device contains licence-exempt transmitter(s)/receiver(s) that comply with Innovation, Science and Economic Development Canada's licence-exempt RSS(s). Operation is subject to the following two conditions:

- (1) This device may not cause interference.
- (2) This device must accept any interference, including interference that may cause undesired operation of the device. This equipment complies with IC RSS-102 radiation exposure limits set forth for an uncontrolled environment.

L'émetteur/récepteur exempt de licence contenu dans le présent appareil est conforme aux CNR d'Innovation, Sciences et Développement économique Canada applicables aux appareils radio exempts de licence. L'exploitation est autorisée aux deux conditions suivantes :

- (1) L'appareil ne doit pas produire de brouillage;
- (2) L'appareil doit accepter tout brouillage radioélectrique subi, même si le brouillage est susceptible d'en compromettre le fonctionnement. Cet équipement est conforme aux limites d'exposition aux radiations IC CNR-102 établies pour un environnement non contrôlé.

型號 /MODEL: TW201

FCC ID: 2AVIT-TW201

HVIN: TW201

IC: 25936-TW201

