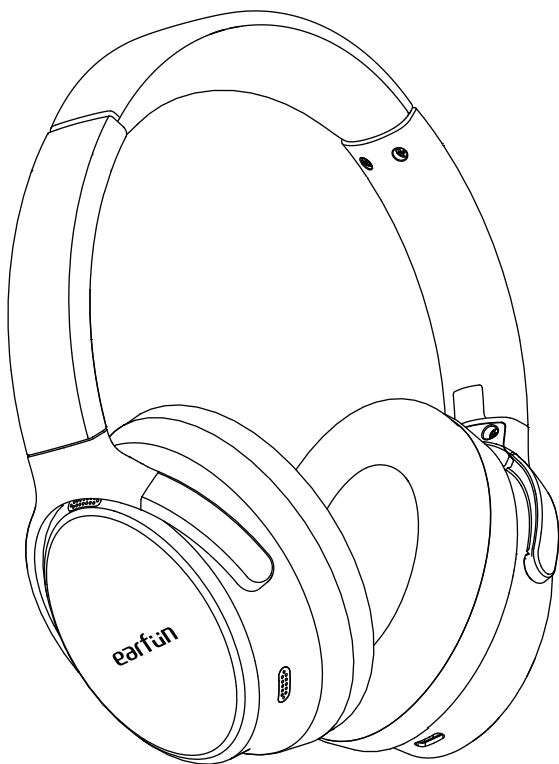


earfun

EarFun Tune Pro

ANC Wireless Headphones



User Manual

1. EarFun Audio App

Download the EarFun Audio app for an enhanced experience.

- No Forced Registration. Easy to Use.
- Multi- Band EQ, Multipoint Devices Management.
- Game Mode, Firmware Update, and More.

EarFun Audio



Please update your headphones firmware to the latest version via the EarFunAudio App for the best user experience. If headphones can't connect to the app, reinstall or update the app in the app store.

2. What's in the Box

EarFun Tune Pro

AUX Audio Cable

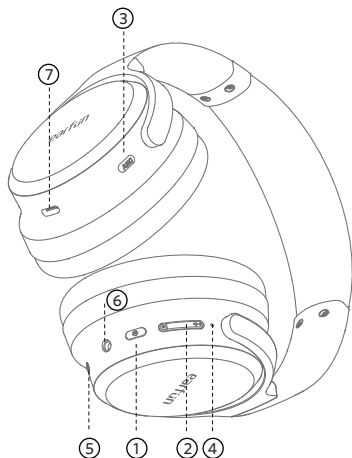
USB-C Cable

User Manual



3. Product Diagram

- ① MFB Button
- ② Volume +/- Button
- ③ ANC Control Button
- ④ Headphone Status LED indicator / Charging LED indicator
- ⑤ Microphone
- ⑥ 3.5mm AUX Audio Input Jack
- ⑦ USB-C Charging contactor



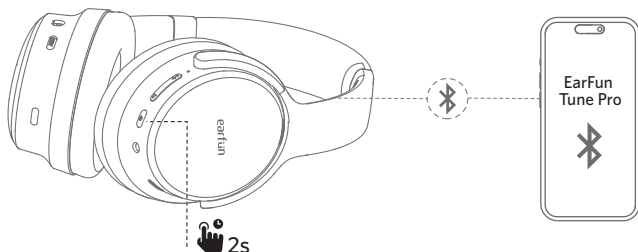
4. Pairing Your Headphones

1. First-time Pairing with Device

Step 1. Press and hold the MFB button for 2 seconds to power on the headphones. It will automatically enter into pairing mode.

Step 2: Search on your smartphone device for other pairing devices.

Step 3: Select "EarFun Tune Pro" from the list of smartphone devices shown (if a password is needed, type '0000').



Notes:

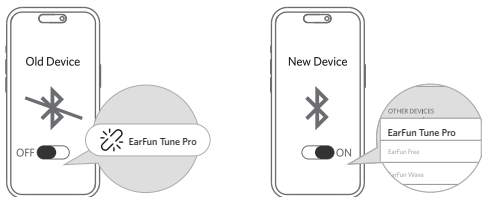
The headphones will automatically connect with the previously paired device when power on again.

2. Connect to a New Device

Option A

Step 1. Unpair the headphones from the smartphone device that's connected. The headphones will disconnect from the current device and go into pairing mode to be paired again.

Step 2. Search on the new device and connect.

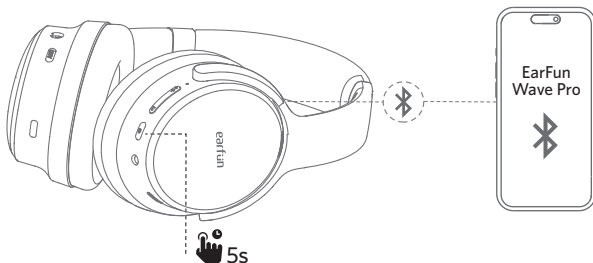


Option B

Step 1. Press and hold MFB button for 2 seconds to power off the headphones.

Step 2: Then press and hold MFB button for 5 seconds, the headphones will power on and go into pairing mode.

Step 3. Search on the new device and connect.

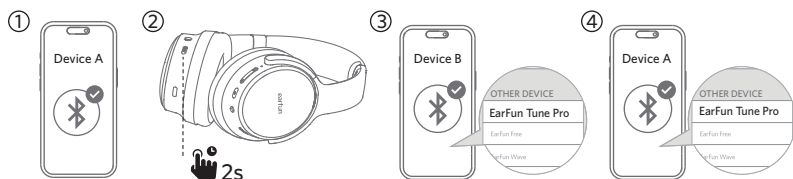


3. Pairing and Connecting two wireless devices simultaneously

Step 1. Pair with the first device and stay connected.

Step 2. Press and hold the ANC control button for 2 seconds. The headphones will enter the Dual Device Connection mode for connecting the second device.

Step 3. Search on the second device to connect the headphones.



Notes:

● Dual Device Connection can be set up via the EarFun Audio App

● The headphones will automatically connect to both devices after finishing setting up the multipoint connection.

5.Functions

Power on:

Press and hold MFB button for 2 seconds



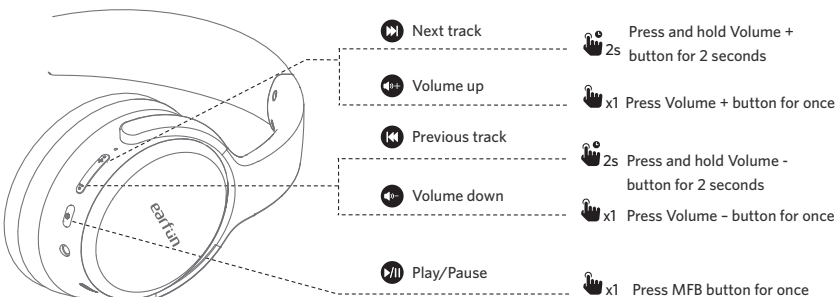
Power off:

Press and hold MFB button for 2 seconds

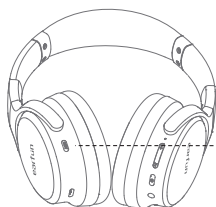



Note: If the headphones are not connected to any device, they will automatically power off after 30 minutes for saving the battery life.

🎵 Playing music



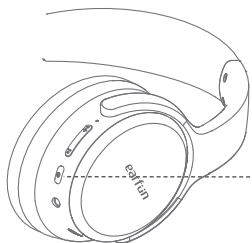
Noise cancelling control




 Noise cancelling /
Normal/
Ambient sound

 x1 Press ANC control button once


Hands free conversation




 Answer/End a call

 x1 Press MFB button for once

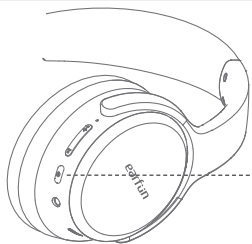
 Reject a call

 2s Press and hold MFB button for 2 seconds

 Answer and transfer two calls


 x2 Press MFB button for twice

Activate the voice assistant



 Voice assistant

 x2 Press MFB button for twice

 Game Mode: Please enable in EarFun Audio app

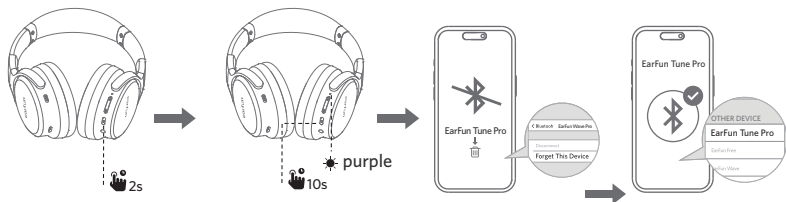
6.Headphones Status LED Indicator

Power on	Blue indicator turn on for 1 seconds
Power off	Red indicator turn on for 1 seconds
Pairing mode	Indicator flashes blue
Successfully connected	Indicator turns off
Factory reset	Indicator turn on in purple for 3 seconds

7.Reset and Reconnecting

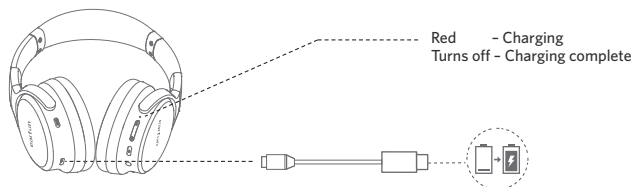
If you fail to establish a connection between the headphones and smartphone devices, please try the following steps:

1. Press and hold MFB button for 2 seconds to power off headphones.
2. Press and hold the MFB button for at least 10s until headphones status LED indicate in purple, and then release the button. The Headphones have been reset successfully.
3. Power on headphones again and then delete the previous connection from the Bluetooth device and reactivate Bluetooth to reconnect "EarFun Tune Pro".



8.Charging

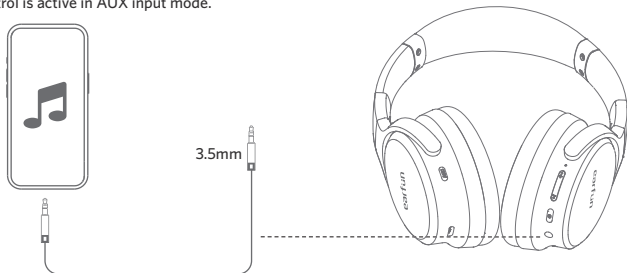
1. Please clean the USB-C charging port before charging.
2. Fully charge the headphones before first use.
3. You can check the headphones battery level from the smartphone device or EarFun Audio app.
4. The headphones will power off automatically after connecting to charging.



Connect USB-C cable for charging

9.AUX Input

1. The headphones need to be powered on to use the AUX input.
2. The headphones will disconnect the wireless connection when plug-in the AUX audio cable.
3. In AUX input mode, you can't control the volume, play/pause by the headphones, and also can't be controlled by the EarFun Audio app. Please use the front-end device to adjust the volume and play/pause.
4. The ANC control is active in AUX input mode.



Note:

- Please ensure that the volume of front-end device is turned down to minimum when connecting the AUX audio. Adjust the volume after putting on this headphones.
- In AUX input mode, this headphones Just support FF (feed-forward) noise cancellation and don't support the hybrid noise cancellation.

10.Specifications

Wireless version	5.4
Wireless frequency	2.402GHz-2.480GHz
Wireless transmitted power	<7dBm (for EU)
Maximum working range	15m(without obstacle)
Battery capacity	1100mAh
Charging time	3 hours
Playtime(varies by volume level and audio content)	ANC OFF--Up to 120 hours ANC ON--Up to 100 hours
Input	5V ---1A
Dimensions	195.3mm x 164.9mm x 81.4mm
Weight	289.5g

11.Troubleshooting

Q: The headphones are turning on, but it doesn't connect to my device?

A: To connect the headphones to your device, please ensure headphone is power on, then check if the wireless connection is enabled. If the Headphones still don't connect to your device, please perform a reset or contact our customer support.

Q: Why is the connection not stable and cuts out intermittently?

A: Please make sure there are no objects between the headphones and your smartphone device and make sure there is no radio or WIFI interference nearby.

Q: What is the range of the wireless headphones?

A: The wireless headphones have maximum range of 49 feet (15m, no obstacle). However, the actual range will depend on usage and environment.

Q: My headphones will not switch on.

A: Please recharge them and make sure they have enough battery power. If they are fully charged and still nothing happens or if you are not able to charge them, please contact our customer support.

Q: Will the headphones shut off automatically?

A: The headphones will stay on as long as they are connected to a device. If no audio is playing, they will enter power-saving mode and wake up once audio playback resumes. If the headphones are not connected to any devices they will automatically power off after 30 minutes.

Customer Service

For FAQs and more information:
Please send an email to: service@myearfun.com
www.myearfun.com

FCC Statement

Changes or modifications not expressly approved by the party responsible for compliance could void the user's authority to operate the equipment.

This equipment has been tested and found to comply with the limits for a Class B digital device, pursuant to Part 15 of the FCC Rules. These limits are designed to provide reasonable protection against harmful interference in a residential installation. This equipment generates uses and can radiate radio frequency energy and, if not installed and used in accordance with the instructions, may cause harmful interference to radio communications. However, there is no guarantee that interference will not occur in a particular installation. If this equipment does cause harmful interference to radio or television reception, which can be determined by turning the equipment off and on, the user is encouraged to try to correct the interference by one or more of the following measures:

- Reorient or relocate the receiving antenna.
- Increase the separation between the equipment and receiver.
- Connect the equipment into an outlet on a circuit different from that to which the receiver is connected.
- Consult the dealer or an experienced radio/TV technician for help.

This device complies with part 15 of the FCC rules. Operation is subject to the following two conditions:

- (1) This device may not cause harmful interference.
- (2) This device must accept any interference received, including interference that may cause undesired operation.

RF Exposure Compliance

This equipment complies with FCC radiation exposure limits set forth for an uncontrolled environment. This transmitter must not be co-located or operating in conjunction with any other antenna or transmitter.

CAUTION

Risk of explosion if the battery is replaced by an incorrect type

Disposal of a battery into fire or a hot even, or mechanically crushing or cutting of a battery, that can result in an explosion;

Leaving a battery in an extremely high temperature surrounding environment that can result in an explosion or the leakage of flammable liquid or gas;

A battery subjected to extremely low air pressure that may result in an explosion or the leakage of flammable liquid or gas.



To prevent possible hearing damage, do not listen at high volume levels for long periods.

Trademarks

Hi-Res Audio Logo is used under license from Japan Audio Society.

Other trademarks and trade names are those of their respective owners.

EU Declaration of Conformity

Earfun Technology (HK) Limited hereby declares that this equipment is in compliance with the essential requirements and other relevant provisions of Directive 2014/53/EU and RoHS 2011/65/EU Directive.

The declaration of conformity may be consulted in the support section of our Web site, accessible from www.myearfun.com

UK Declaration of Conformity

Hereby, [Earfun Technology (HK) Limited] declares that the radio equipment type [HP220] is in compliance with UK Radio Equipment Regulations (SI 2017/1206). The full text of the declaration of conformity is available at the following internet address: www.myearfun.com

ISED Compliance Statements

This device contains licence-exempt transmitter(s)/receiver(s) that comply with Innovation, Science and Economic Development Canada's licence-exempt RSS(s). Operation is subject to the following two conditions:

(1) This device may not cause interference.

(2) This device must accept any interference, including interference that may cause undesired operation of the device.

This equipment complies with ISED RSS-102 radiation exposure limits set forth for an uncontrolled environment.

L'émetteur/récepteur exempt de licence contenu dans le présent appareil est conforme aux CNR d'Innovation, Sciences et Développement économique Canada applicables aux appareils radio exempts de licence. L'exploitation est autorisée aux deux conditions suivantes :

(1) L'appareil ne doit pas produire de brouillage;

(2) L'appareil doit accepter tout brouillage radioélectrique subi, même si le brouillage est susceptible d'en compromettre le fonctionnement.

Cet équipement est conforme aux limites d'exposition aux radiations ISED RSS-102 établies pour un environnement non contrôlé.

NCC聲明：

取得審驗證明之低功率射頻器材，非經核准，公司、商號或使用者均不得擅自變更頻率、加大功率或變更原設計之特性及功能。低功率射頻器材之使用不得影響飛航安全及干擾合法通信；經發現有干擾現象時，應立即停用，並改善至無干擾時方得繼續使用。前述合法通信，指依電信管理法規定作業之無線電通信。低功率射頻器材須忍受合法通信或工業、科學及醫療用電波輻射性電機設備之干擾。

型號/MODEL: HP220

FCC ID: 2AVIT-HP220 HVIN: HP220, IC: 25936-HP220



211-240904