

FIGURE 3
REMOTE CONTROL (M/N: ERF3A90)
COVER REMOVED

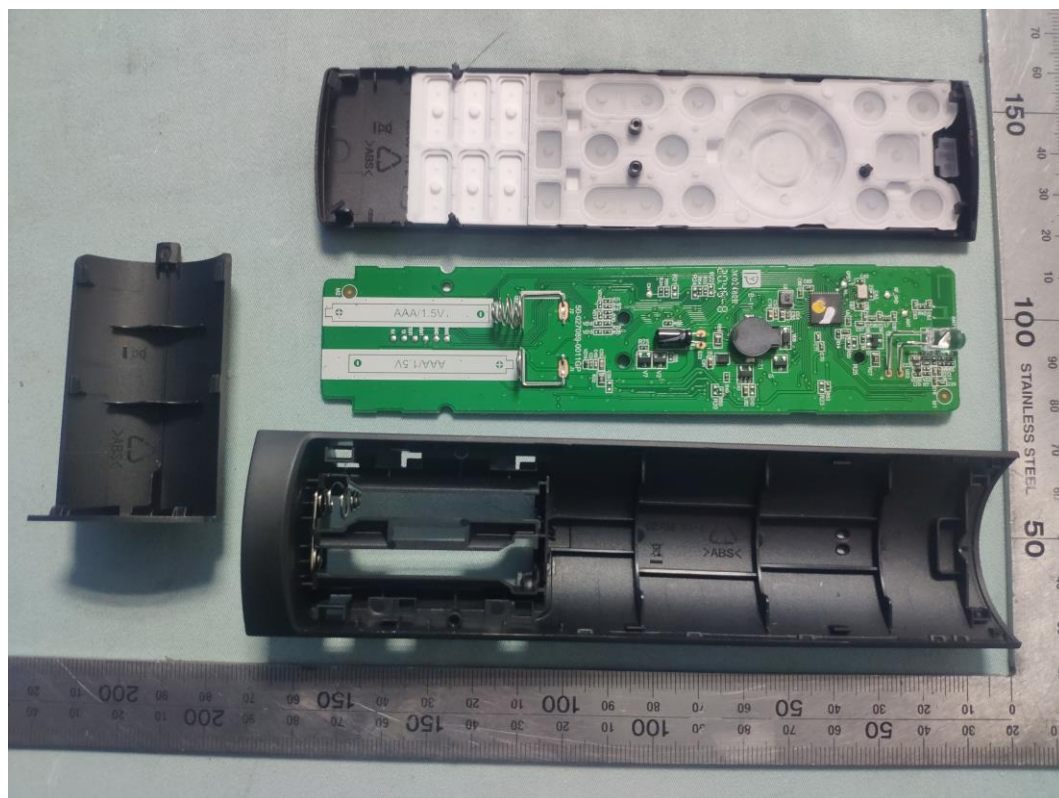


FIGURE 4
REMOTE CONTROL (M/N: ERF3A90)
MAIN BOARD (COMPONENT SIDE)

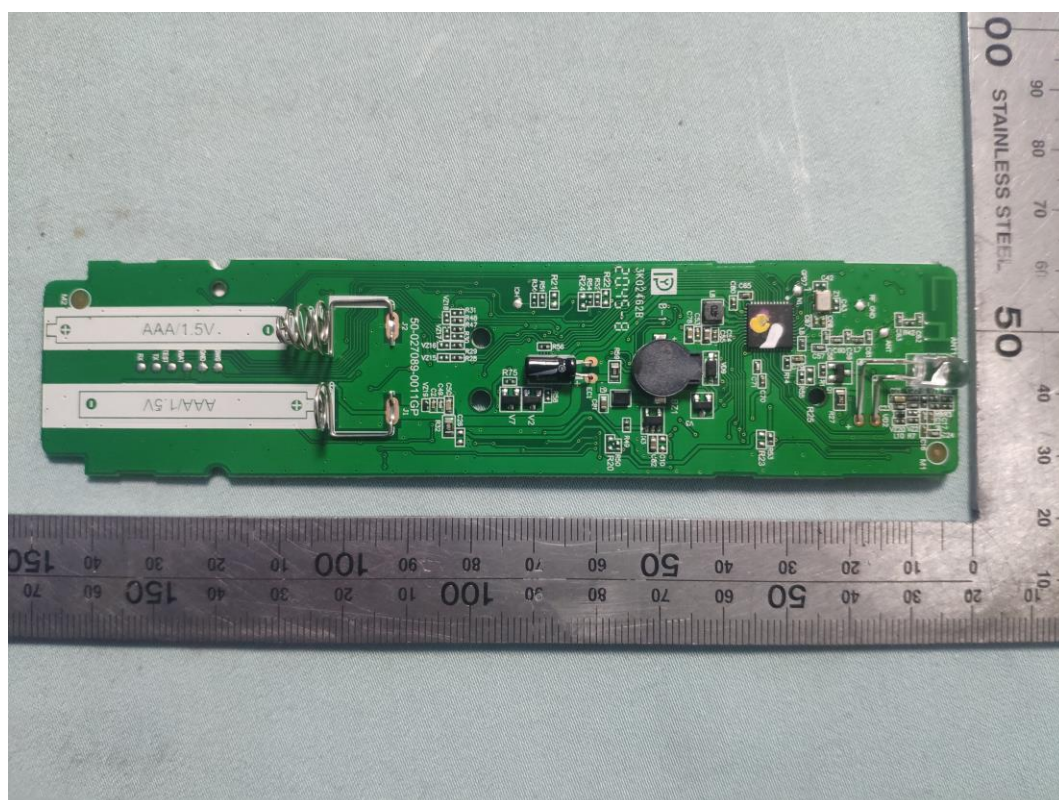


FIGURE 5
REMOTE CONTROL (M/N: ERF3A90)
MAIN BOARD (SOLDERED SIDE)

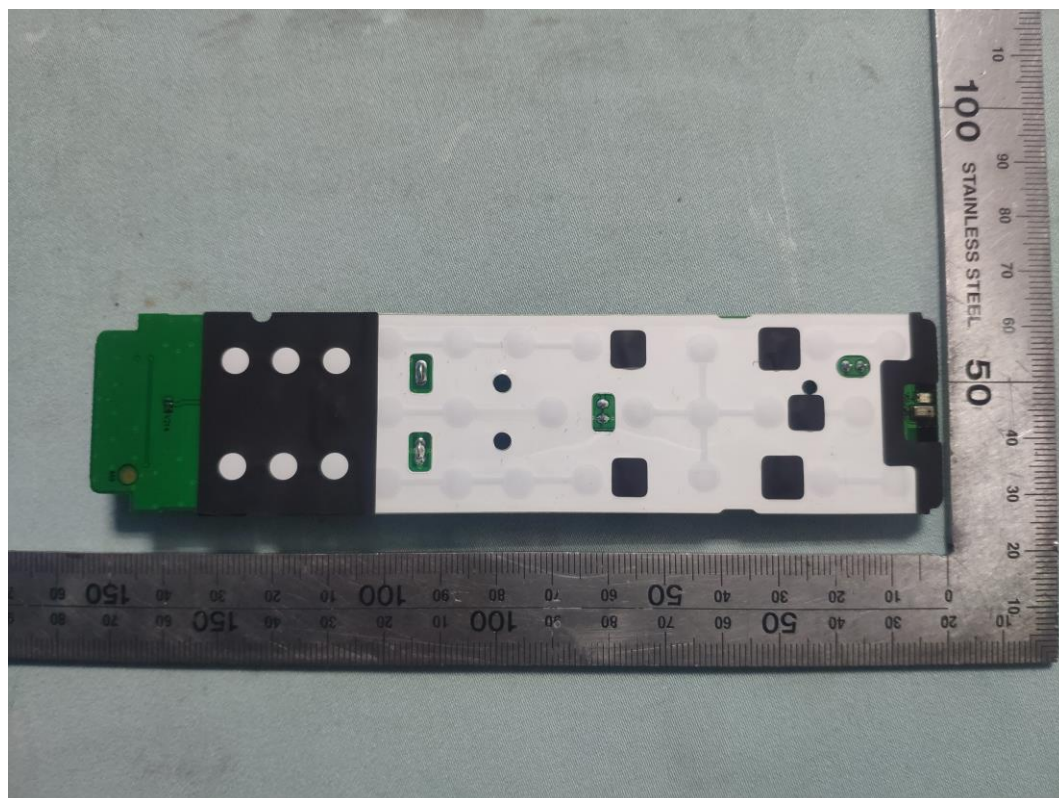


FIGURE 6
REMOTE CONTROL (M/N: ERF3A90)
CHIP & CRYSTAL ON MAIN BOARD

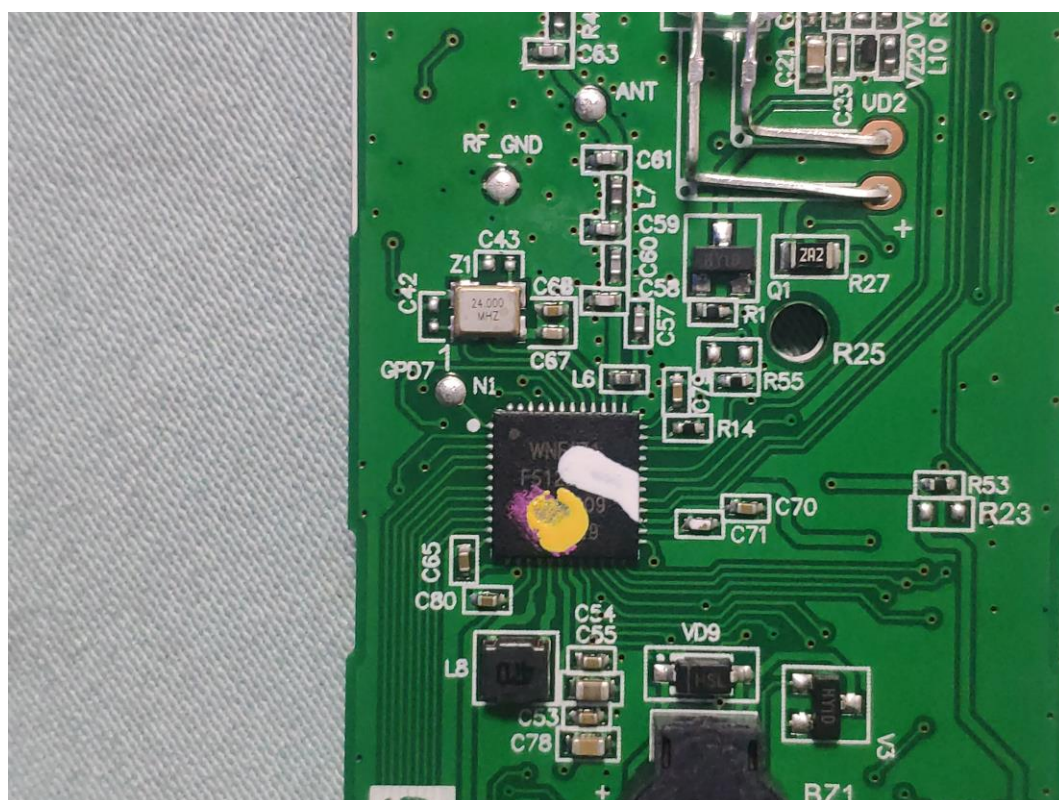


FIGURE 7
REMOTE CONTROL (M/N: ERF3A90)
MIC ON BOARD

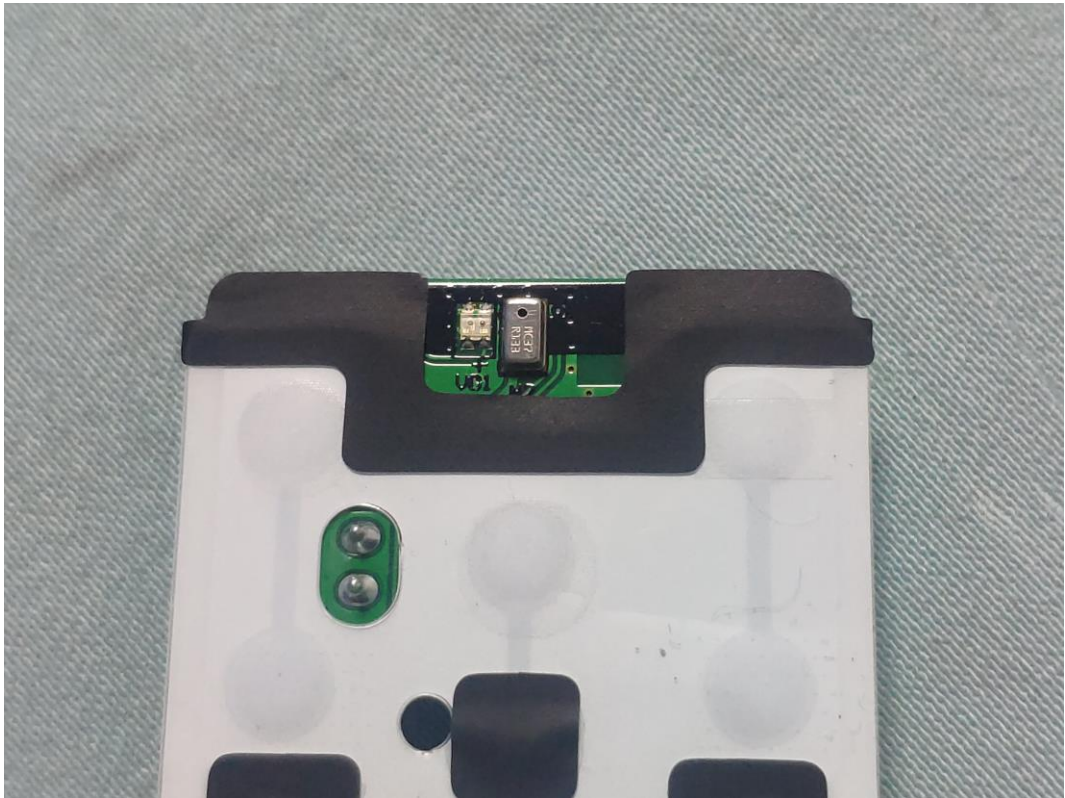


FIGURE 8
REMOTE CONTROL (M/N: ERF3A90)
ANTENNA

