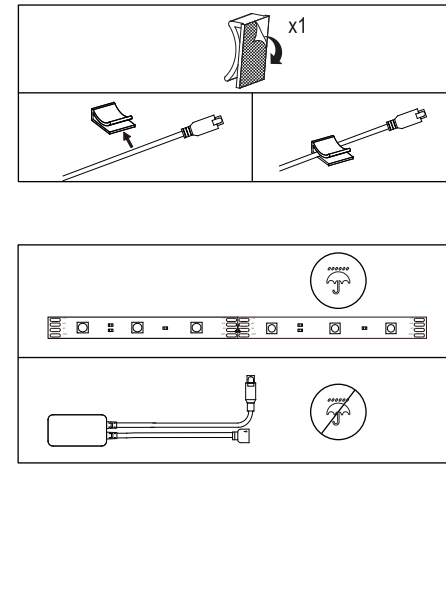
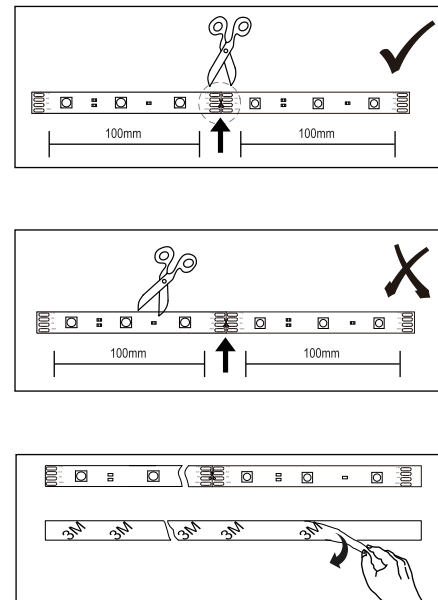
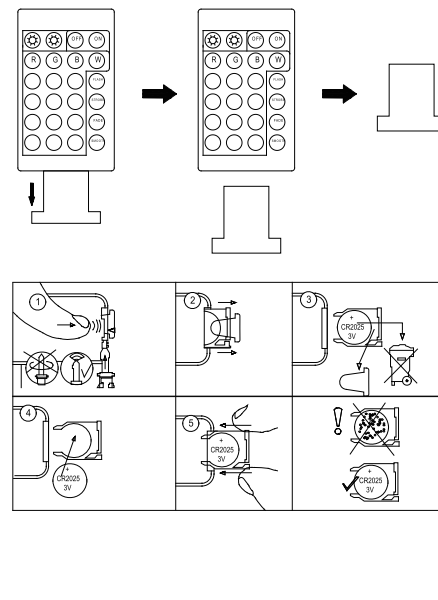
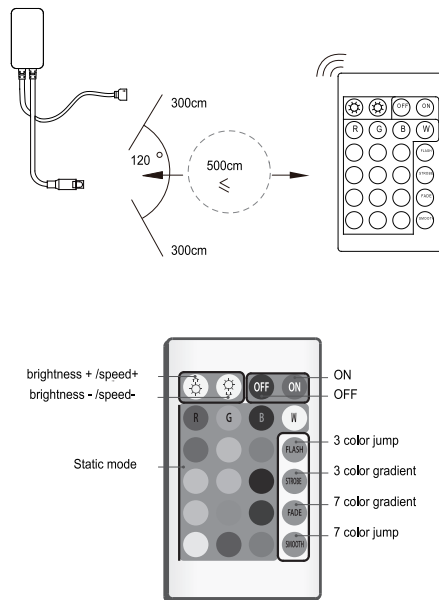
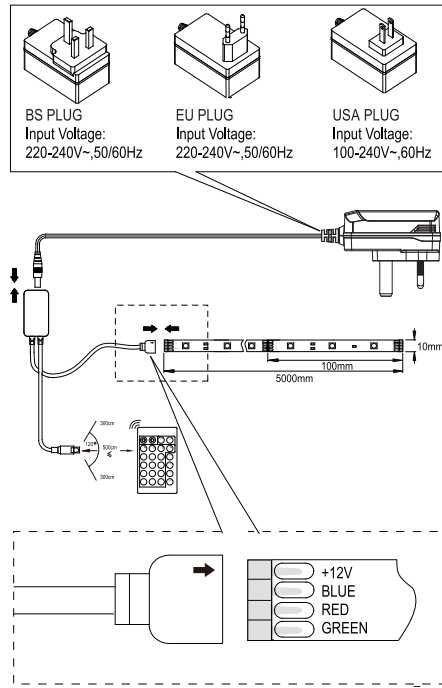
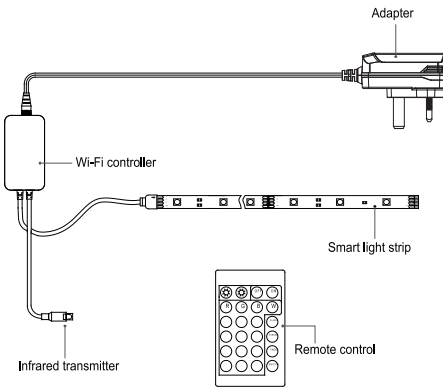


Smart Light Strip User Manual

DW-50RGWF
3M / 5M / 10M

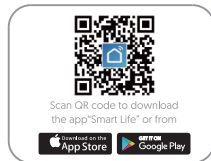
● Parameters

Name: Smart Light Strip
Model: DW-50RGWF
Power Rated: 28W
Power Output: DC 12V/3A



● Setup

1. Scan the QR code or go to the App Store to download the Smart Life App. Create an account and add your device.



2. LEWENTECH Smart Light Strip only supports 2.4GHz Wi-Fi network.

3. Follow the instructions in the app and connect the device to your network.

Please note: There are two modes configuration[Quick Mode/ AP Mode] available for you to add the devices. Quick Mode is recommended.

● Quick Mode Configuration

1. Before connecting, please make sure your smart phone or device is connected with your home Wi-Fi successfully(2.4 GHz).
2. Put the power plug "in-out-in-out-in", and the smart light strip will flash quickly(Please wait for 6-8s when the light strip is on, and then the light strip will flash).
3. Tap the icon "+" of the Smart Life App to add device.
4. Follow the in-App instruction to connect the smart light strip to your Wi-Fi network(2.4 GHz)

● AP Mode Configuration

1. Before connecting, please make sure your smart phone or device is connected with your home Wi-Fi successfully(2.4 GHz).
2. Put the power plug "in-out-in-out-in", make sure the smart light strip flash quickly. And then put the power plug "in-out-in-out-in", the smart light strip will flash slowly(flash every 1.5 seconds)
3. Tap the icon "+" of the Smart Life App to add device.
4. Click AP mode at the right corner of Smart life APP.
5. Follow the in-App instruction to connect the smart light strip to your Wi-Fi network(2.4 GHz)

● Konfiguration

1. Scannen Sie den QR-Code oder rufen Sie den App Store auf, um die Smartinzu.



2. LEWENTECH Smart Light Strip unterstützt nur 2,4-GHz-WLAN-Netzwerke.

3. Befolgen Sie die Anweisungen in der App und verbinden Sie das Gerät mit Ihrem Netzwerk.

Bitte beachten Sie: Zum Hinzufügen der Geräte stehen Ihnen zwei Konfigurationsmodi [Schnellmodus / AP-Modus] zur Verfügung. Der Schnellmodus wird empfohlen.

● Schnellmodus-Konfiguration

1. Vergewissern Sie sich vor dem Anschließen, dass Ihr Smartphone oder Gerät erfolgreich mit Ihrem Heim-WLAN (2,4 GHz) verbunden ist.
2. Setzen Sie den Netzstecker in die Steckdose, und der Smart Light Strip blinkt schnell.
3. Tippen Sie auf das Symbol "+" der Smart Life-App, um ein Gerät hinzuzufügen.
4. Befolgen Sie die Anweisungen in der App, um den Smart Light Strip mit Ihrem Wi-Fi-Netzwerk (2,4 GHz) zu verbinden.

● AP-Modus-Konfiguration

1. Vergewissern Sie sich vor dem Anschließen, dass Ihr Smartphone oder Gerät erfolgreich mit Ihrem Heim-WLAN (2,4 GHz) verbunden ist.
2. Stellen Sie sicher, dass der Smart-Light-Strip schnell blinkt, indem Sie den Netzstecker in die Steckdose stecken. Stecken Sie dann den Netzstecker in die Steckdose. Der Smart Light Strip blinkt langsam (blinkt alle 1,5 Sekunden).
3. Tippen Sie auf das Symbol "+" der Smart Life-App, um ein Gerät hinzuzufügen.
4. Klicken Sie auf den AP-Modus in der rechten Ecke der Smart Life-App.
5. Befolgen Sie die Anweisungen in der App, um den Smart Light Strip mit Ihrem Wi-Fi-Netzwerk (2,4 GHz) zu verbinden.

● FCC Statement

This device complies with Part 15 of the FCC Rules. Operation is subject to the following two conditions:

- (1) this device may not cause harmful interference.
- (2) this device must accept any interference received, including interference that may cause undesired operation.

This equipment complies with FCC radiation exposure limits set forth for an uncontrolled environment. This equipment should be installed and operated with minimum distance 20cm between the radiator & your body.

"Please note that changes or modifications of this product is not expressly approved by the party responsible for compliance could void the user's authority to operate the equipment."

NOTE: This equipment has been tested and found to comply with the limits for a Class B digital device, pursuant to Part 15 of the FCC Rules. These limits are designed to provide reasonable protection against harmful interference in a residential installation. This equipment generates, uses and can radiate radio frequency energy and, if not installed and used in accordance with the instructions, may cause harmful interference to radio communications.

However, there is no guarantee that interference will not occur in a particular installation.

If this equipment does cause harmful interference to radio or television reception, which can be determined by turning the equipment off and on, the user is encouraged to try to correct the interference by one or more of the following measures:

- Reorient or relocate the receiving antenna.
- Increase the separation between the equipment and receiver.
- Connect the equipment into an outlet on a circuit different from that to which the receiver is connected.
- Consult the dealer or an experienced radio/TV technician for help

● Warm Tips

- Please check whether device is connected with power and your phone is connected with Wi-Fi.
- Check routers: If router is dual-band router, please select 2.4GHz network and add device. You also need to open the router broadcasting function.
- Set up wireless router: Set encryption method as WPA2-PSK authorization type as AES, or set both as auto. Wireless mode cannot be only.
- Please name router Wi-Fi in English. In order to stay strong Wi-Fi signal, please keep device and router within certain distance.
- Check whether connected devices have reached the Maximum number router connection. If so, please try to turn off the Wi-Fi connection of some devices
- Make sure router wireless MAC filtering function is enabled. Remove the device from the filter list and make sure that router is no prohibiting device from connection.
- Make sure the entered password is correct when adding new device.

● Warranty

The product carries a one-year warranty from purchase date. Please feel free to contact us when you have any product problem. LEWENTECH customer service email: