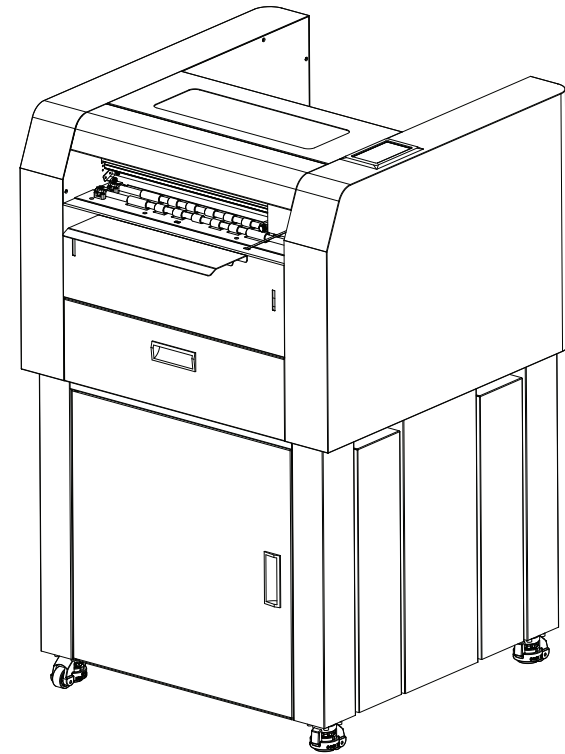


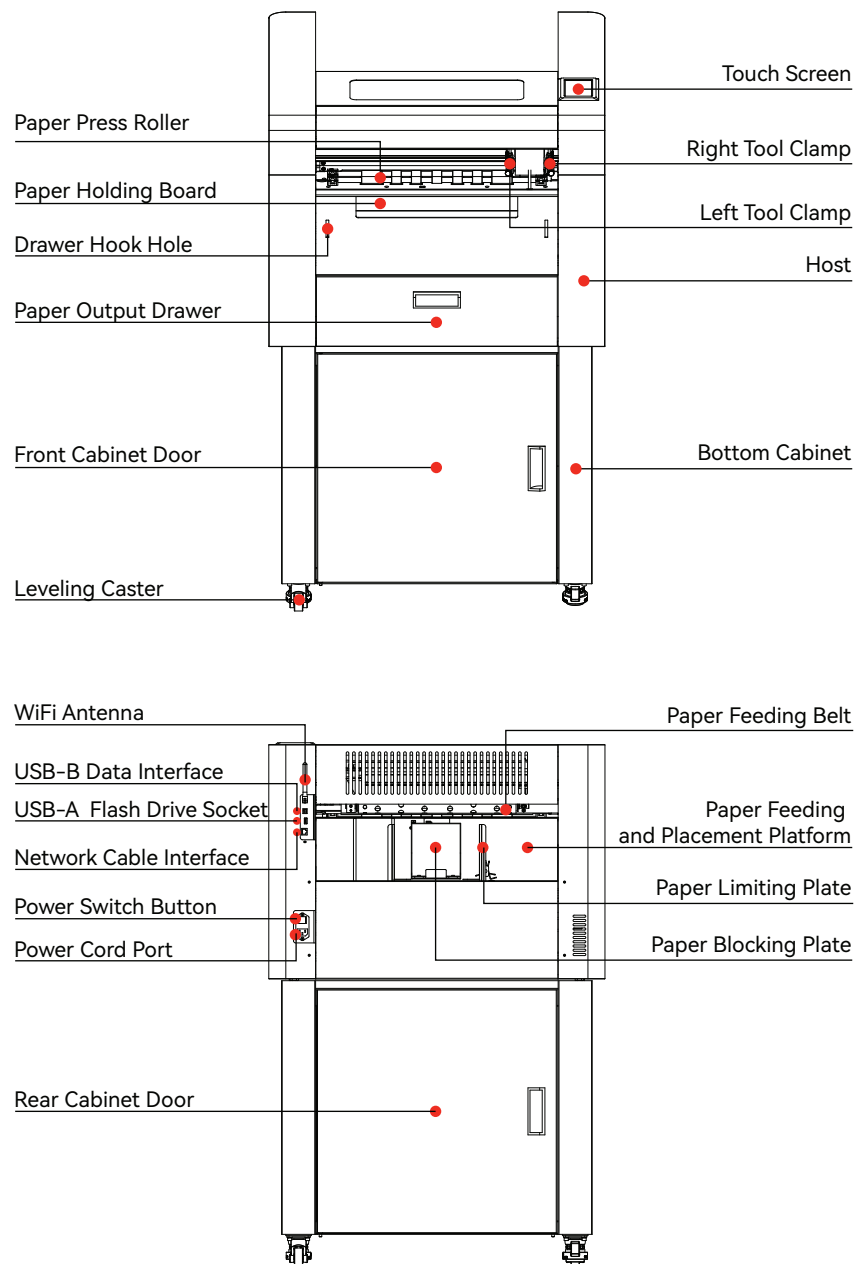
A3MAX5

Label Cutting Plotter

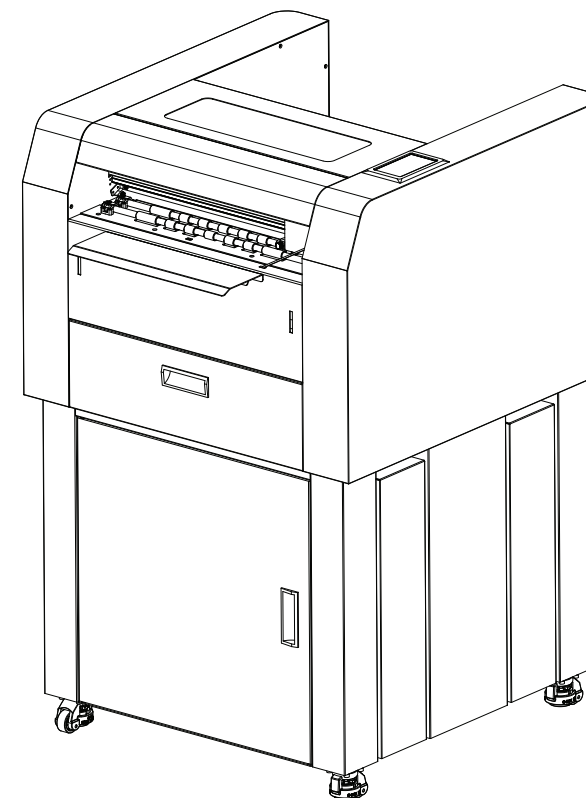
Operation Manual



Appearance identification



What's in the packing box?



Packing List

Smart label cutting machine * 1	Pen housing * 1
USB flash * 1	Pen refill * 2
USB data cable * 1	WiFi antenna * 1
Power cord * 1	Felt pad cutter strip * 1
Scoring Stylus * 1	Instruction book * 1
Blade housing * 1	Quality inspection certificate*1
45-degree cutting blade * 2	Paper distributor * 1
60-degree cutting blade * 1	Paper output tray * 1

A3MAX5 / Product parameters

Serial number	Name	Specifications/parameter
1	X.Y axis working motor	DC servo motor
2	Z axis working motor	Dual voice coil motors
3	Control panel	5 Inches touch screen
4	Number of tool clamp	2
5	Tool type	Cutting knife、Indentation knife、Paintbrush
6	Cutting blade type	45°、60°
7	Edge-following function	OR Code, Dot, Right Angle Scanning
8	Maximum material width	370mm
9	Maximum cutting width	350mm
10	Maximum cutting speed	1600mm/s
11	Maximum cutting pressure	Left: 800g, Right: 800g
12	Repeatability accuracy	0.05mm
13	Cutting accuracy	0.05mm
14	Paper capacity	150mm
15	Bottom cabinet capacity	224L (700 x 640 x 500mm)
16	Mechanical resolution	0.02mm
17	Data connection method	WIFI、USB、Network Port
18	Software	SignCut
19	Applicable cutting materials	PVC、PET
20	Input	100-240VAC 50/60HZ
21	Power	<100W
22	Operation temperature	5℃— +35℃
23	Working humidity	45%-75% (Non-condensing)
24	Host size	790 x 790 x 580mm
25	Machine size(Including bottom cabinet)	790 x 790 x 1200mm
26	Package size	Host: 970 x 960 x 670mm Bottom Cabinet: 930 x 900 x 730mm
27	Net weight of the machine	Host: 96KG Bottom Cabinet: 50KG
28	Packaging gross weight	Host: 128KG Bottom Cabinet: 83KG

Precautions for using sticker label cutters are as follows

I. Before operation

- Equipment inspection:
 - Check whether the appearance of the sticker label cutter is damaged, especially parts such as the power cord and plug, to ensure there are no safety hazards such as damage or leakage.
 - Confirm that the cutting tool is firmly installed and there is no wear or damage. If there is a problem, replace the tool in time.
 - Check whether each transmission part of the equipment is flexible, such as belts and gears, to ensure the equipment can operate normally.
- Familiarize with operation:
 - Carefully read the equipment's user manual to understand the equipment's functions, operation methods, and precautions.
 - Conduct some simple test operations to familiarize yourself with the equipment's control buttons and cutting process.
- Prepare the working environment:
 - Place the equipment on a stable and solid workbench to avoid using it on a vibrating or unstable surface.
 - Ensure good ventilation in the working area to prevent the equipment from overheating.
 - Clear away clutter around the working area to prevent interference with equipment operation or causing safety accidents.

II. During operation

- Correctly set parameters:
 - According to the material, thickness, and size of the sticker label, reasonably set parameters such as cutting speed, pressure, and tool depth.
 - Before starting cutting, conduct a sample test first to ensure the parameter settings are correct and the cutting effect meets the requirements.
- Safe operation:
 - Operators should wear appropriate protective equipment such as gloves and goggles to prevent being cut by the tool or splashed by sticker fragments.
 - It is strictly prohibited to put hands or other body parts into the cutting area when the equipment is running to avoid danger.
 - Pay attention to the running state of the equipment. If abnormal noise, vibration, or odor is found, immediately stop operation and check the equipment.
- Sticker placement:
 - Ensure that the sticker label is placed flatly at the equipment's feed inlet to avoid wrinkles or skewness, so as not to affect cutting accuracy.
 - According to the equipment's requirements, adjust the tension of the sticker to prevent poor cutting due to too loose or too tight stickers.
- Continuous operation:
 - If a large number of sticker labels need to be continuously cut, pay attention to the heat dissipation of the equipment to avoid damage caused by overheating of the equipment.
 - Regularly clean the cutting area and waste collection device of the equipment to prevent waste accumulation from affecting equipment performance.

III. After operation

- Equipment shutdown:
 - After completing the cutting task, first stop the equipment operation and then turn off the power switch.
 - Unplug the power cord plug to ensure the equipment is completely powered off.
- Cleaning and maintenance:
 - Clean the dust and sticker residues on the equipment surface to keep the equipment clean.
 - Check the wear condition of the tool. If necessary, replace the tool in time.
 - Lubricate and maintain the transmission parts of the equipment to extend the service life of the equipment.
- Storage and custody:
 - Store the equipment in a dry and ventilated place to avoid damp and high-temperature environments.
 - You can use a dust cover or plastic bag to cover the equipment to prevent dust and debris from entering the equipment interior.

FCC Warning Statement

Changes or modifications not expressly approved by the party responsible for compliance could void the user's authority to operate the equipment. This equipment has been tested and found to comply with the limits for a Class B digital device, pursuant to Part 15 of the FCC Rules. These limits are designed to provide reasonable protection against harmful interference in a residential installation. This equipment generates uses and can radiate radio frequency energy and, if not installed and used in accordance with the instructions, may cause harmful interference to radio communications. However, there is no guarantee that interference will not occur in a particular installation. If this equipment does cause harmful interference to radio or television reception, which can be determined by turning the equipment off and on, the user is encouraged to try to correct the interference by one or more of the following measures:

- Reorient or relocate the receiving antenna.
- Increase the separation between the equipment and receiver.
- Connect the equipment into an outlet on a circuit different from that to which the receiver is connected.
- Consult the dealer or an experienced radio/TV technician for help.

This device complies with part 15 of the FCC Rules. Operation is subject to the following two conditions: (1) This device may not cause harmful interference, and (2) this device must accept any interference received, including interference that may cause undesired operation.

RF Exposure Statement
To maintain compliance with FCC's RF Exposure guidelines, This equipment should be installed and operated with minimum distance of 20cm the radiator your body. This device and its antenna(s) must not be co-located or operation in conjunction with any other antenna or transmitter.

This equipment is not suitable for use in locations where children are likely to be present.



CAUTION

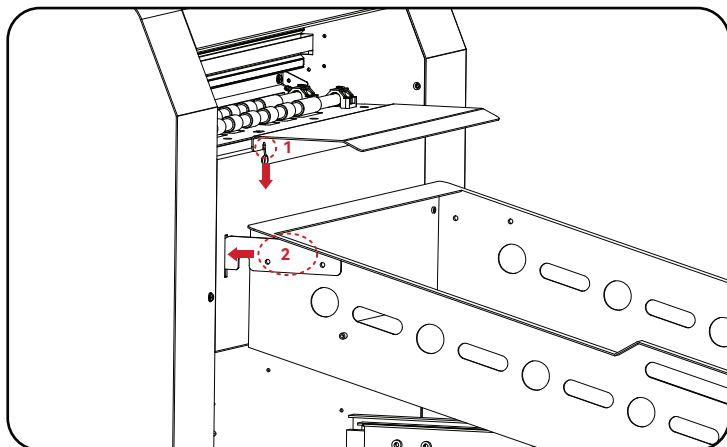
Moving parts Keep body parts away from moving parts



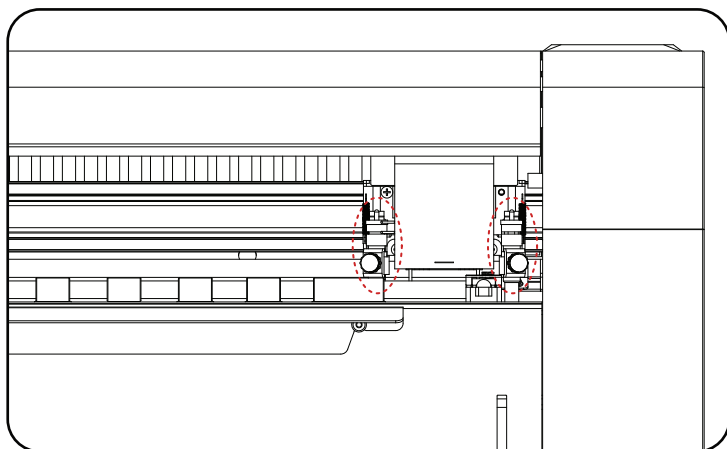
CAUTION

Sharp edges.Do not touch

1



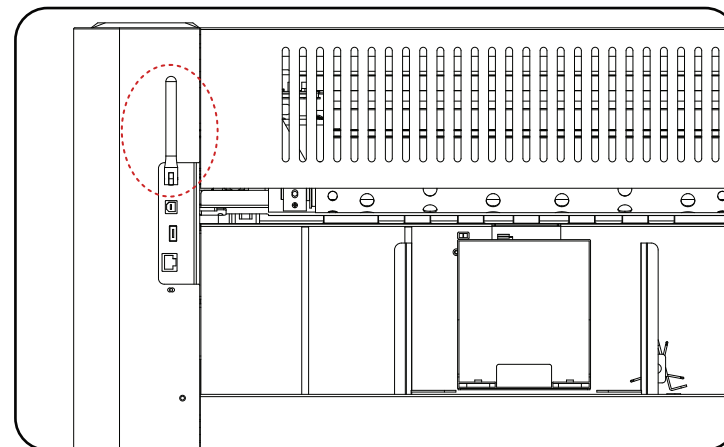
2



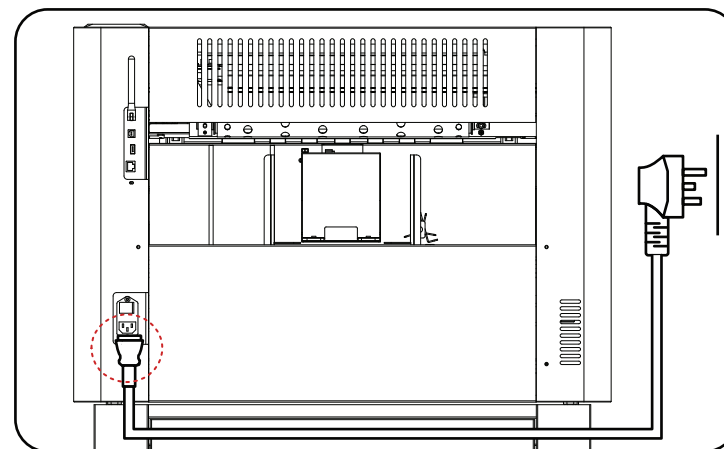
Installation procedure

1. Install the paper output tray & paper distribution tray
2. Install the cutting knife and scoring stylus
3. Install the WiFi antenna
4. Connect the power cord

3



4

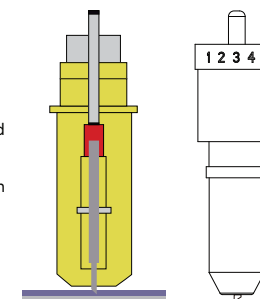


Initial recommended settings:

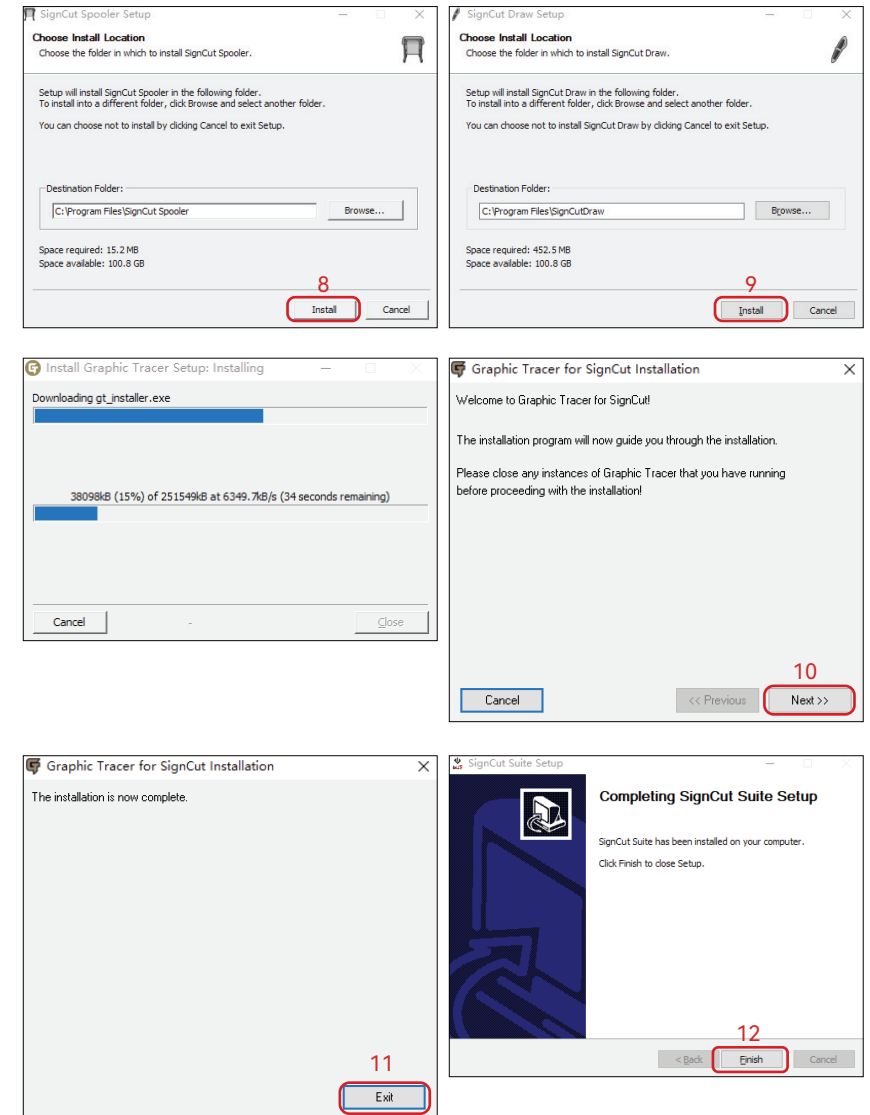
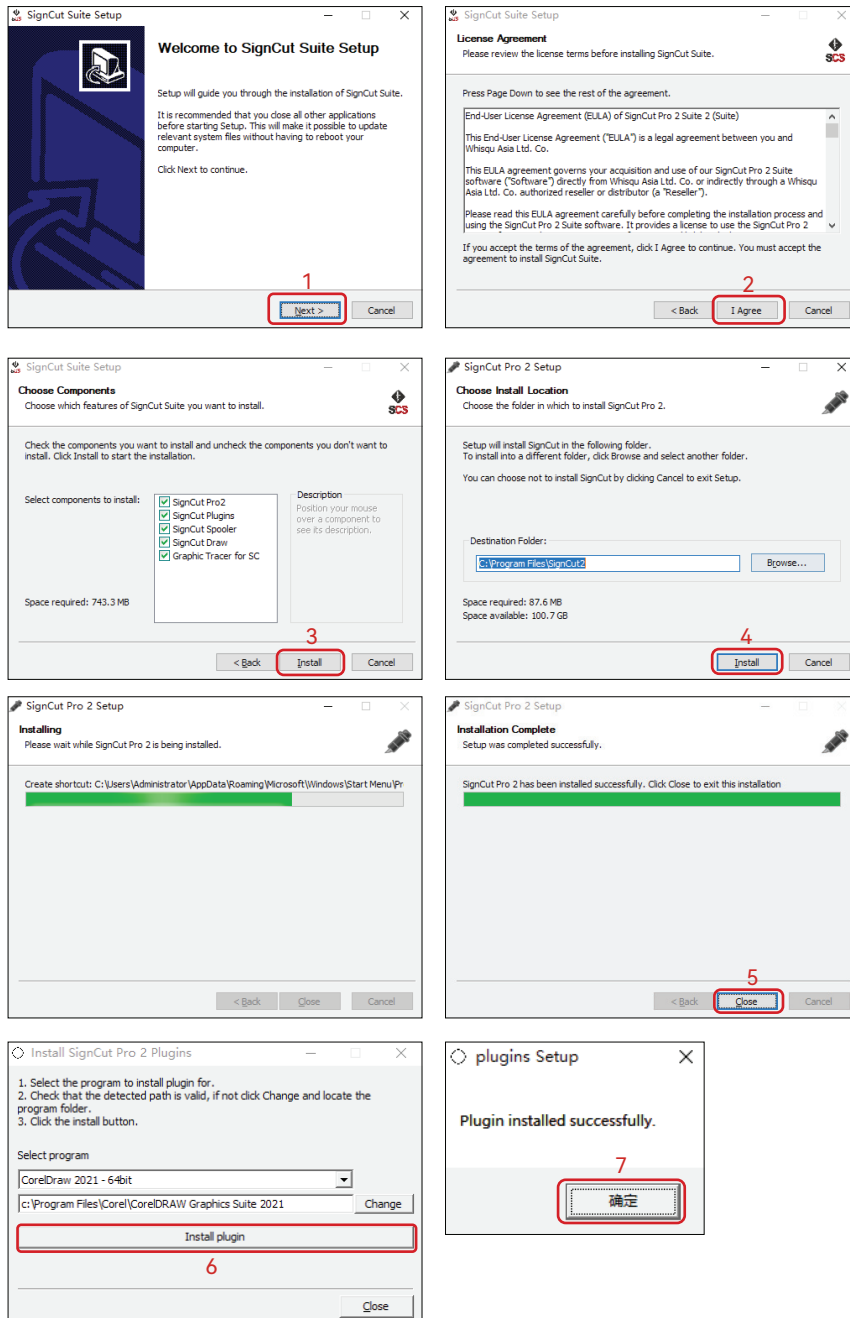
Speed 11, knife pressure 25 - 30.

It is recommended that the tip of the cutting knife be exposed by 0.2mm.

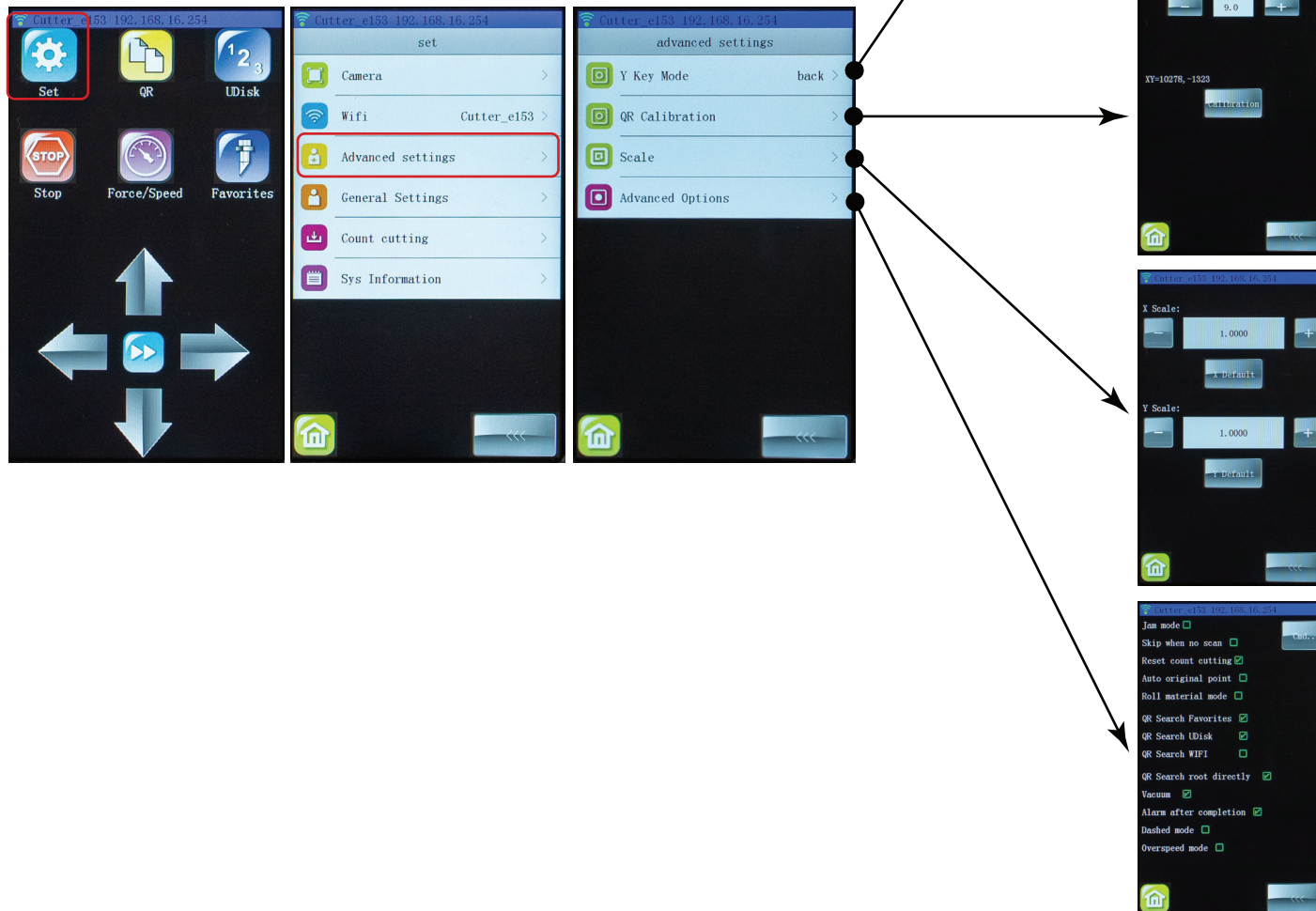
If small details cannot be cut through, the length of the tip can be adjusted appropriately.



How to install computer application software?



What are the functions of advanced Settings?



Y-axis feed wheel direction button setting options

Qr code position adjustment Setting

X axis and Y axis ratio Settings, factory will be adjusted, please adjust carefully

Advanced Settings, factory calibration, please adjust carefully

What are the functions of General Settings?

