

Model: VIE_IPC02

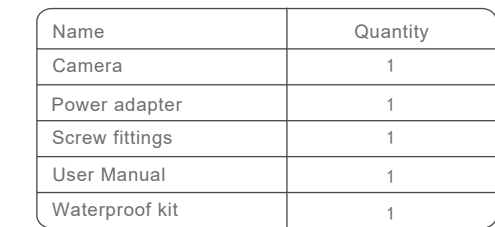
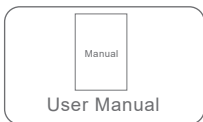


WiFi Bullet IP Camera is a digital surveillance product that integrates multiple functions such as video and audio capture, intelligent coding and compression, and network transmission. It adopts embedded operating system and high-performance hardware processing platform with high stability and reliability. You can realize functions such as long-distance transmission and real-time video viewing and configuration through mobile APP.

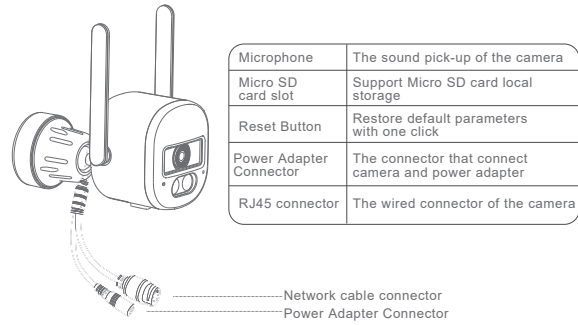
Diagram illustrating the back of the camera with the following components labeled:

- Camera Lens
- IR LED and White Light
- Mic
- Built-in TF card slot
- Reset

Packing List



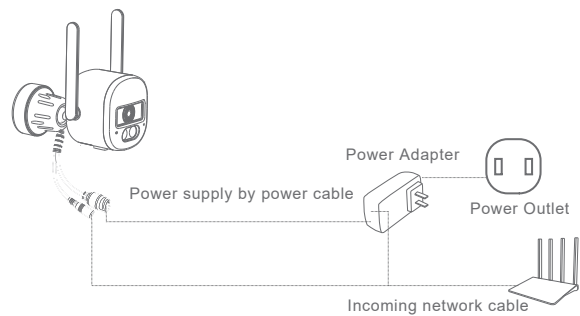
Product Appearance



Connecting device

Connect the power adapter to the power supply, after the camera is normally connected, the camera's network port indicator will show a green light always on.

*Please use 8-core standard network cable!



*Please use 8-core standard network cable!

Mounting

Before installation, please make sure that the equipment in the box is intact and that all parts are available. This series of camera can generally be installed by wall type mounting and ceiling mounting, the specific installation steps are as follows.

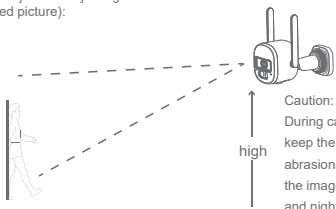
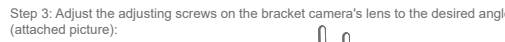
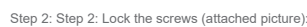
Caution:

The mounting wall should have the strength to withstand at least 3 times the total weight of the

Wall-type mounting

Fixed bracket: Remove the mounting spacer on the bracket and fix the camera bracket on the mounting wall as shown in below picture. If it is a concrete wall ceiling, you need to install the expansion screws first (the mounting holes of the expansion screws need to be the same as the bracket) and then install the bracket; if it is a wooden wall, you can use self-tapping screws

Step 1: Stick the bracket screw positioning hole sticker label on the wall, according to the positioning sticker holes punched out holes, punched into the expansion tube, finally fix the bracket with self-tapping screws.

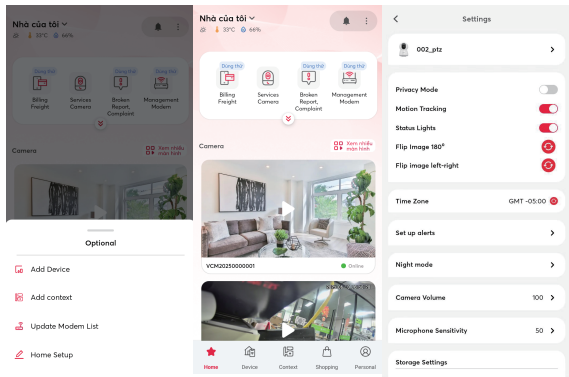


Caution:
During camera installation, please keep the lens clean and free from abrasions and scratches to ensure the image effect during the day and night.

Get the Viettel Home APP

Please scan below QR code to download "Viettel Home" APP:
Please register and log in the APP after installation.

1. Click "+" to add a device.
2. Follow the instruction to add the camera.
3. After added the camera, you can view, control the camera and configure the settings.



The product is subject to the actual product, the manual is for reference only. Users can update the firmware version and APP version through APP. This manual may contain technical descriptions or inconsistencies with product functions or typographical errors. Users are requested to understand and subject to the final interpretation of our company.

CAUTION: Do not install the product in damp, dusty, high temperature, flammable and explosive places and places inaccessible to children.

Restricted Substance or Element Labeling Chart

<Administrative Measure on the Control of Pollution Caused by Electronic Information Products> Restricted Substance or Element Labeling Chart

Toxic and Harmful Substances Elemental	Component Name				
	Plastic Casing	Circuit Boards assemblies	Power cable	Power Adapter	Lens
Cadmium (Pb)	○	×	×	×	○
Mercury (Hg)	○	○	○	○	○
Chromium (Cd)	○	○	○	○	○
Hexavalent chrome (Cr (VI))	○	○	○	○	○
Polybrominated biphenyl (PBB)	○	○	○	○	○
Polybrominated diphenyl ether (PBDE)	○	○	○	○	○

○ Indicates that the content of the hazardous substance in all homogeneous materials of the part is below the limit requirements stipulated in SJ/T11363-2006.

× Indicates that the content of the hazardous substance in at least one homogeneous material of the part exceeds the limit requirements specified in SJ/T11363-2006.

(However, this item is only used in small quantities in stockpiles or processed products, and is undergoing an environmental switchover according to the plan, after which it will comply with the above regulations.)



FCC Statement

This device complies with Part 15 of the FCC Rules. Operation is subject to the following two conditions: (1) this device may not cause harmful interference, and (2) this device must accept any interference received including interference that may cause undesired operation. Note: This equipment has been tested and found to comply with the limits for a Class B digital device, pursuant to 15 of the FCC Rules. These limits are designed to provide reasonable protection against harmful interference to a residential installation. This equipment generates, uses and can radiate radio frequency energy, and if not installed and used in accordance with the instructions, may cause harmful interference to radio communications. However, there is no guarantee that interference will not occur in a particular installation. If this equipment does cause harmful interference to radio or television reception, which can be determined by turning the equipment off and on, the user is encouraged to try to correct the interference by one or more of the following measures:

- Reorient or relocate the receiving antenna.
- Increase the separation between the equipment and receiver.
- Connect the equipment into an outlet on a circuit different from that to which the receiver connects.
- Consult the dealer or an experienced radio/TV technician for help.

FCC Radiation Exposure statement
This projector complies with FCC RF radiation exposure limits set forth for an uncontrolled environment. This device should be installed and operated with a minimum distance of 20cm between the radiator and user body. This transmitter must not be co-located or operating in conjunction with any other antenna or transmitter. **FCC WARNING:** This equipment may generate or use radio frequency energy. Changes or modifications to this equipment may cause harmful interference unless the modifications are expressly approved in the instruction manual. The user could lose the authority to operate this equipment if an unauthorized change or modification is made.