

Antenna Specification

Internal antenna

Model: FRX-LW088-21

Antenna introducing

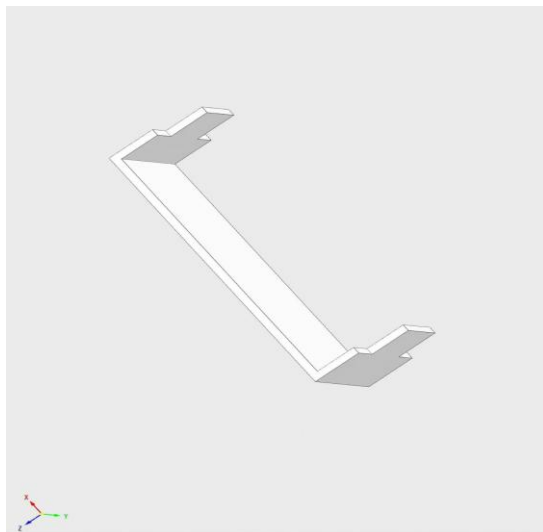
antenna Made work in 2.4~2.5&4.9~5.825GHz especially suit for WLAN system.Design by dipole antenna theory,supply high gain ,high efficiency ,better port matching make wireless communication easily.

Features

- IEEE802.11 a/b/g/n/ac
- Peak gain 2.5dBI for 2G and 3dBI for 5G
- High efficiency
- Good port matching

Antenna size

12.0mm*1.9mm*3.0mm

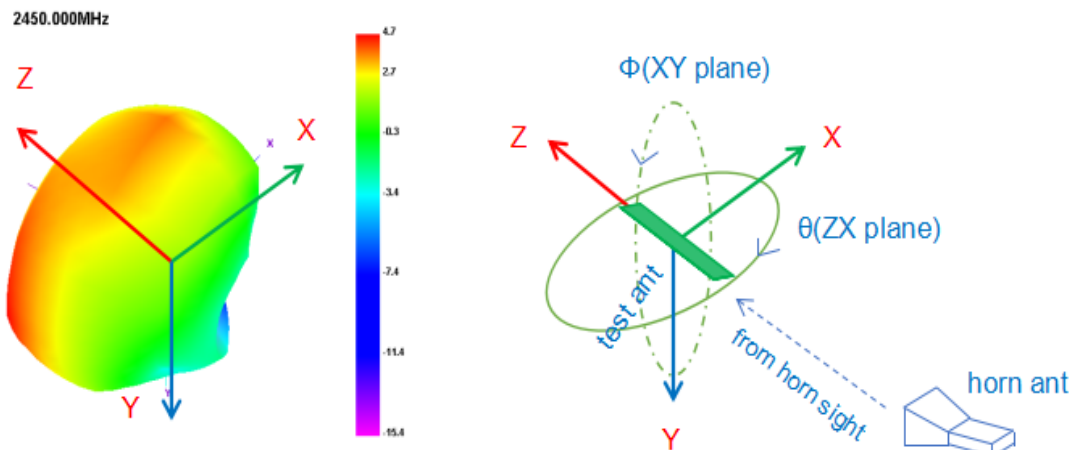


Antenna electrical properties

Frequency	2.4~2.5&4.9~5.825GHz
Impedance	50ohm nominal
V.S.W.R	≤ 2.0
Return loss	$\leq -10\text{dB}$
Radiation	Omni-directional
Gain(Peak)	2G:2.52dBi/ 5G:2.95dBi
Polarization	Linear
Admitted Power	2W
Efficiency	2G:68%/ 5G:63%

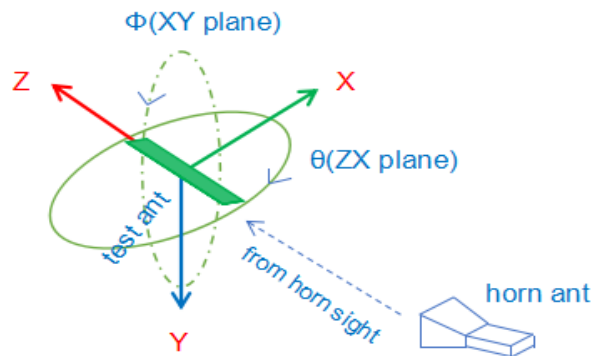
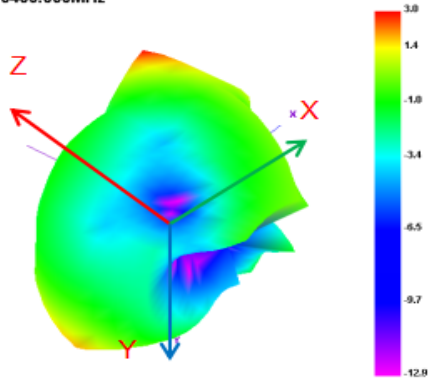
Antenna total gain and efficiency

	Freq. (MHz)	Gain (dBi)	Efficiency (%)
ANT	2400	2.45	65%
	2450	2.36	68%
	2500	2.52	67%



	Freq. (MHz)	Gain (dBi)	Efficiency (%)
ANT	5100	2.75	62%
	5400	2.95	65%
	5850	2.8	62%

5400.000MHz

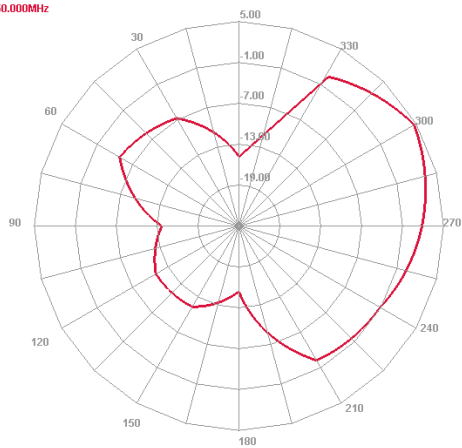


Radiation Pattern

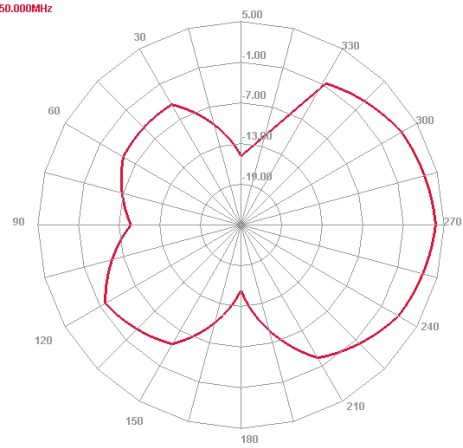
	Freq. (MHz)	Gain (dB)
ANT	2450	2.50

E1 Face

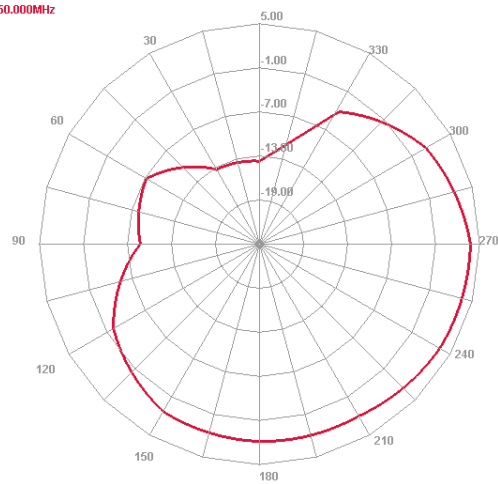
2450.000MHz

**ZX plane****E2 Face**

2450.000MHz

**ZY plane****Horizontal**

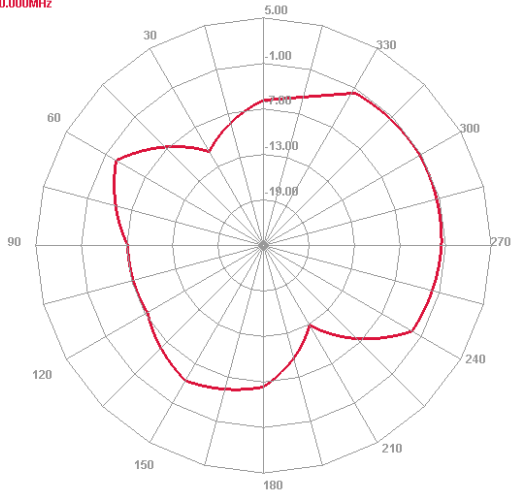
2450.000MHz

**XY plane**

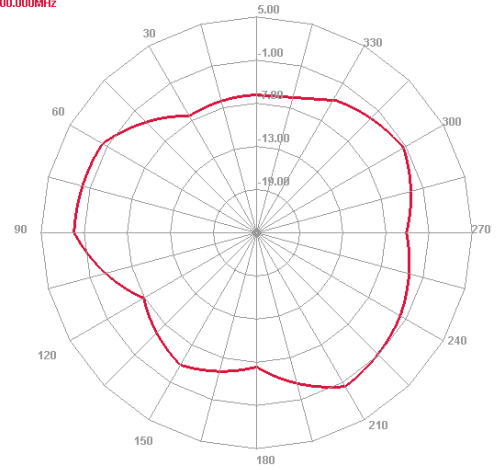
	Freq. (MHz)	Gain (dB)
ANT	5400	2.86

E1 Face

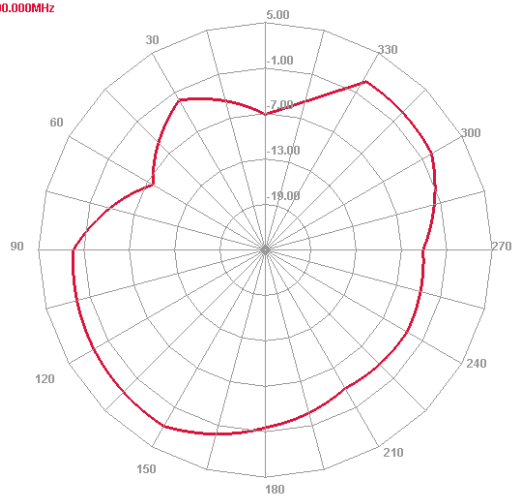
5400.000MHz

**ZX plane****E2 Face**

5400.000MHz

**ZY plane****Horizontal**

5400.000MHz

**XY plane**