

Light Modes

- Press the **Lights** button two times turn the speaker lights on/off. Press the **Lights** button to cycle through LED light modes: breathing, fast flash, slow flash, steady light, and lights off.

FCC WARNINGS

WARNING: Changes or modifications to this unit not expressly approved by the party responsible for compliance could void the user's authority to operate the equipment.

NOTE: This equipment has been tested and found to comply with the limits for a Class B digital device, pursuant to Part 15 of the FCC Rules. These limits are designed to provide reasonable protection against harmful interference in a residential installation. This equipment generates, uses, and can radiate radio frequency energy and, if not installed and used in accordance with the instructions, may cause harmful interference to radio communications. However, there is no guarantee that interference will not occur in a particular installation. If this equipment does cause harmful interference to radio or television reception, which can be determined by turning the equipment off and on, the user is encouraged to try to correct the interference by one or more of the following measures:

- Reorient or relocate the receiving antenna.
- Increase the separation between the equipment and receiver.
- Connect the equipment into an outlet on a circuit different from that to which the receiver is connected.
- Consult the dealer or an experienced radio/TV technician for help.

ADDITIONAL WARNINGS

- WARNING: To prevent fire or shock hazards, do not expose this unit to rain or moisture.
- WARNING : Where the mains plug or appliance coupler is used as the disconnect device, such disconnect device shall remain readily operable.
- Lithium batteries, like all rechargeable batteries, are recyclable and should be recycled or disposed of according to state and local guidelines. They should never be disposed of in normal household waste and they should never be incinerated, as they might explode. Contact your local government for disposal or recycling practices in your area.



WARNING : This product can expose you to chemicals including lead, which is known to the State of California to cause cancer and birth defects or other reproductive harm. For more information go to: www.P65Warnings.ca.gov. **This product meets and complies with required Federal product guidelines.**

International Support

To download this User's Guide in English, Spanish, or French, or to get answers to frequently asked questions, visit the support section at:
www.iLiveElectronics.com

Para descargar este Manual del Usuario en Inglés, Español y Francés, o para obtener respuestas a preguntas frecuentes, visite la sección de apoyo en:
www.iLiveElectronics.com

Pour télécharger ce guide de l'utilisateur en Anglais, Espagnol ou Français, ou pour obtenir des réponses à des questions fréquemment posées, consultez la rubrique d'assistance sur:
www.iLiveElectronics.com

Contact Information

Website: www.iLiveElectronics.com

Email Support: proinfo@dpiinc.com

Email Parts: partsinfo@dpiinc.com

Phone Support: 1-888-999-4215

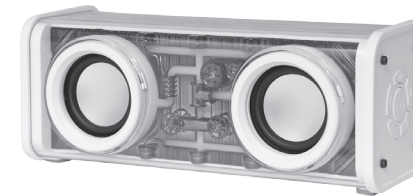
Warranty

For Warranty Information and the most up-to-date version of this User's Guide, go to:
www.iLiveElectronics.com.



**Protect for Today
Sustain for Tomorrow**

Specifications are subject to change without notice.
Copyright © 2024 Digital Products International (DPI, Inc.)
All other trademarks appearing herein are the property of their respective owners.



Transparent+
Wireless Speaker
User's Guide for Model ISB214 v3205-01

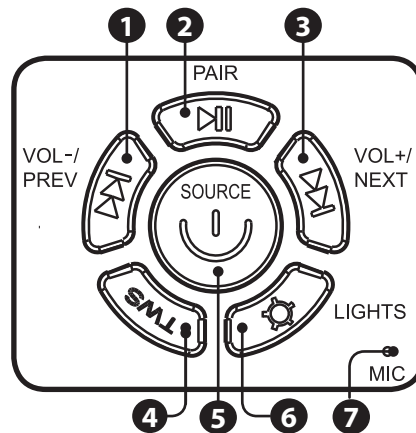
Features

- Bluetooth v5.3
- Party Plus connection to another ISB214W Speaker
- Built-in microphone
- MicroSD slot
- Color changing LED lights
- Playtime: up to 7 hours at 50% volume

Includes

- USB-C to USB-A charging cable
- User's guide

Overview & Controls



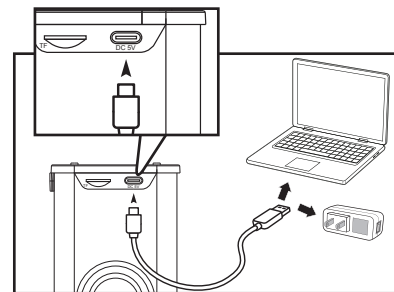
Overview & Controls

1. **Vol -/Previous:** Press to decrease the volume. Press and hold down to return to the previous track.
2. **Play/Pause/Pair:** Press to pause or resume playback. Press to answer and hang up phone calls with handsfree speakerphone. Press and hold to enter Bluetooth pairing mode.
3. **Vol +/Next:** Press to increase the volume. Press and hold down to skip to the next track.
4. **TWS:** Press and hold to activate Party Plus pairing mode.
5. **Power/Source:** Press and hold to power the speaker on/off. Press to switch between Bluetooth and MicroSD mode.
6. **Lights:** Press twice to turn speaker lights on/off. Press to cycle through light modes.
7. **Microphone**

Battery Power

- Charge fully before use. For best results, charge when the speaker is off. The charge time is approximately 4 hours.
- Using a **USB-C to USB-A** cable (included), connect the DC power input on the speaker to the USB port of a powered-on computer or USB power adaptor (not included) to charge the speaker.
- While charging, the front LED will display a solid red light. When finished charging, the front LED will turn off.

Note: This model does not support a USB-C to USB-C cable for charging.



Pairing Bluetooth & Playing Audio

Note: This model features automatic Bluetooth pairing.

1. Power on the speaker, a voice will announce "Bluetooth," when the unit is ready to pair. *When pairing, remain within 3 feet of the unit.*
2. Using the controls on your Bluetooth device, select **ISB214** in the Bluetooth Settings to pair. A voice will announce "Bluetooth connected" when the speaker is successfully paired to your device. *If need be, refer to the user's manual for your specific device for more information.*
3. Use the controls on the connected Bluetooth device to select tracks, play, pause, or answer an incoming call.

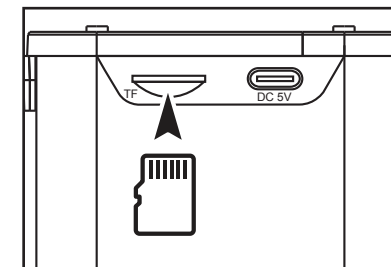
TWS

1. Power on **two ISB214 speakers**, both in Bluetooth mode.
2. Press and hold the **TWS** button on one speaker to activate TWS.
3. A voice will announce "Speaker connected" to indicate the two units are connected. Audio will now play through both speakers.

MicroSD

Supports MicroSD cards up to 64GB.

1. Insert a MicroSD card into the matching port on the soundbar.
2. The speaker will automatically switch to MicroSD Mode.



FCC Warning

This device complies with Part 15 of the FCC Rules. Operation is subject to the following two conditions:

(1) This device may not cause harmful interference, and (2) this device must accept any interference received, including interference that may cause undesired operation.

NOTE 1: This equipment has been tested and found to comply with the limits for a Class B digital device, pursuant to part 15 of the FCC Rules. These limits are designed to provide reasonable protection against harmful interference in a residential installation. This equipment generates, uses and can radiate radio frequency energy and, if not installed and used in accordance with the instructions, may cause harmful interference to radio communications. However, there is no guarantee that interference will not occur in a particular installation. If this equipment does cause harmful interference to radio or television reception, which can be determined by turning the equipment off and on, the user is encouraged to try to correct the interference by one or more of the following measures:

- Reorient or relocate the receiving antenna.
- Increase the separation between the equipment and receiver.
- Connect the equipment into an outlet on a circuit different from that to which the receiver is connected.
- Consult the dealer or an experienced radio/TV technician for help.

NOTE 2: Any changes or modifications to this unit not expressly approved by the party responsible for compliance could void the user's authority to operate the equipment.

The device has been evaluated to meet general RF exposure requirement. The device can be used in portable exposure condition without restriction.