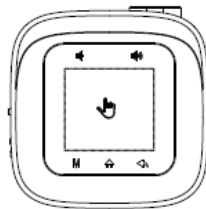
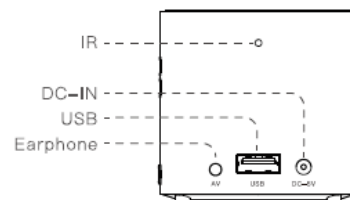
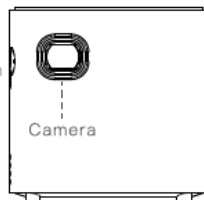


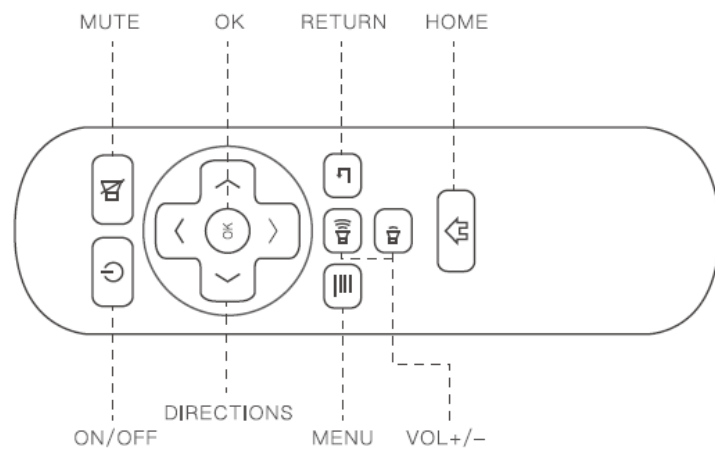
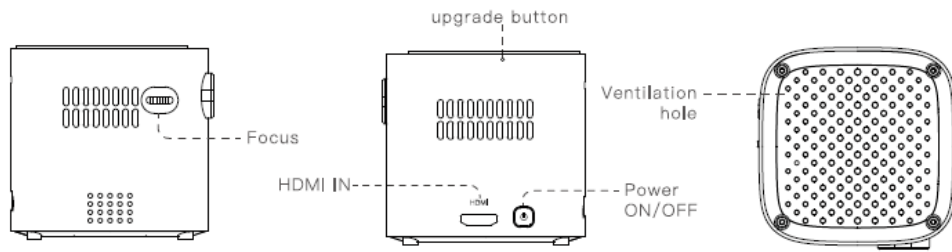
MINI SMART PROJECTOR  
**D019**

※ Use Guide ※  
(ZX-EN-D1912032019)



- ◆ Volume
- ↔ Touch Screen
- Menu
- ⬇️ Homepage
- ⬅️ Return





## Sharpness

Slide pinion on the left of device to adjust sharpness. 

## WIFI

1. Select "Settings", and then select "WIFI", click ON/OFF button to turn on/off WIFI.
2. And then choose WIFI and enter Password to connect network.

### Network settings

**Wi-Fi** Convenient hot spot Ethernet Bluetooth

## Bluetooth

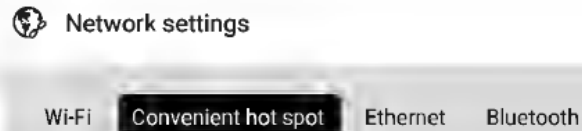
Select "Settings"-Bluetooth, then turn on "Bluetooth", then click "Projector" and press "OK" key on device to rename the Bluetooth. Select "Available equipment" and choose available device to connect.

### Network settings

Wi-Fi Convenient hot spot Ethernet **Bluetooth**

## Portable Wi-Fi hotspot

1. Select "Settings"-Convenient hotspot, click "OFF" turn on Easy WI-FI hotspot , then reset Network SSID,password,security and AP band,click "Save" to save the message finally.
2. Use smart phone to select this hotspot, and enter password to connect and share screen on smart phone .



## Ethernet

There is no cable socket on projector, it needs external cable USB to connect (RJ45 interface needs IC drive RTL8152 or LAN9500 to support only).

## Connect with computer

Connect device with PC via USB cable, select "Settings", click "usb" and there'll be a word "On"  
After "usb", then it supports to copy files from PC to projector.

### { } Developer Options

Usb debugging **ON** **USB ON** USB computer connection

## Factory data reset

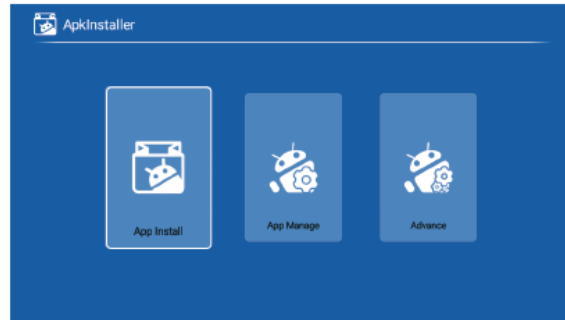
Select "Settings", click "Factory data reset", click "OK" then reset and delete all data.

### 👤 Other settings

About this machine **Factory data reset** Local upgrade Storage  
Pointer speed Application Management Advanced Settings

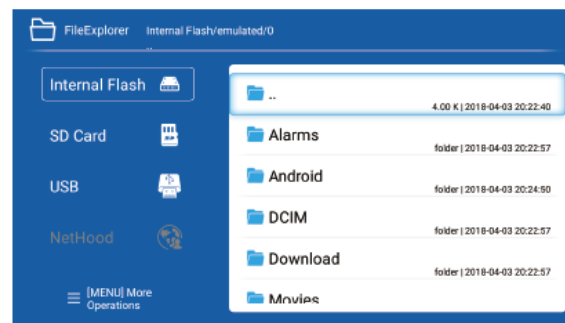
## APK install and unload

1. select "APK Installer" in Apps, select "APP Install". It supports to install APP from SD card, USB drive or APP store in device.
2. select "APK Installer" in Apps, select "APP Manage", then select any APP which needs to be uninstalled.



## Read USB Drive, HDD, SD card,WORD, EXCEL, PPT

Select USB or SD card from File Explorer in Apps Centre/Smart Apps while connected to device. (Supports USB drive storage capacity max. to 32GB, and HDD storage capacity max. to 1TB).Select "WPS OFFICE" from "Smart APPS" Or select "WPS OFFICE" in "File Explorer".



## Built-in screen sharing function(Android)

1. Android smartphone and projector should connect with same WIFI (if no network available, open the WIFI function, no need to connect with network).
2. Find screen sharing function in the settings, then open it.
3. Open projector, find wifi display or Miracast in Smart Apps.
4. Click "search", it will search for smartphone and click "agree" in the pop-up.



## EShare Instruction for Android

1. Install EShare App on Android Device
  - ① Please make sure that Android device and projector are connecting with same network.
  - ② Run "EShareServer" on projector side and operate according to the tips on the screen. Scanning QR code or visiting download website with Android smart phone, downloading and installing "EShare for Android".



1. Connect your cellphone to network "same network connected to the projector"
2. Visit "EShare download link" in explorer or scan QR code with cellphone to download and install the app.
3. Open EShare, then click "Device name".

## EShare Instruction for Android

### 2. Connect Projector with Android Device

When EShare installation is finished, run "EShare" on smart phone side, then EShare will search for the projector which shares the same network with it automatically, click device list on the top to search again and check device. Click objective device name on the device list and the connection will be built. Projector will connect with device automatically when there is only one device available in EShare side.



### 3. Wireless File Transfer

You can transfer selected files including music, video, pictures, office documents, PDF, e-book or APK from your Android devices to Projector by clicking "Storage".



## EShare Instruction for Android

### 4. Wireless Control

Click this icon in the EShare, then the smart phone can be used as the mouse, remote controller, keyboard or fly mouse of the projector.



Remote

### 5. TV Mirror

Click this icon in the EShare, you can transmit pictures from projector to smartphone in real-time.



TV Mirror

### 6. Mirroring

Click this icon on the smartphone, you can transmit the screen of Android device to projector screen.



Mirroring

### 7. Camera

Click this icon in the EShare, pictures and sound of the smartphone camera can be transmitted to the projector in real-time.



Camera



## EShare Instruction for iPhone

1. Slide iPhone screen from bottom to top, click AirPlay mirror, then choose device in the list to achieve sharing screen with iPhone.



2. Install EShare App on IOS Device
  - ① Open App Store on iPhone or iPad;
  - ② Search "EShare" and install "EShare for iPhone/iPad".



1. Connect your cellphone to network "same network connected to the projector"
2. Visit "EShare download link" in explorer or scan QR code with cellphone to download and install the app.
3. Open EShare, then click "Device name".

## EShare Instruction for Windows

1. Install EShare App on Windows Device
  - ① Please make sure that Windows device and projector are connecting with same network.
  - ② Run "EShareServer" on the projector and operate following the tips on the screen. Input download address in Explorer address bar, download and install "EShare for Windows".



1. Connect your cellphone to network "same network connected to the projector"
2. Visit "EShare download link" in explorer or scan QR code with cellphone to download and install the app.
3. Open EShare, then click "Device name".

## EShare Instruction for Windows

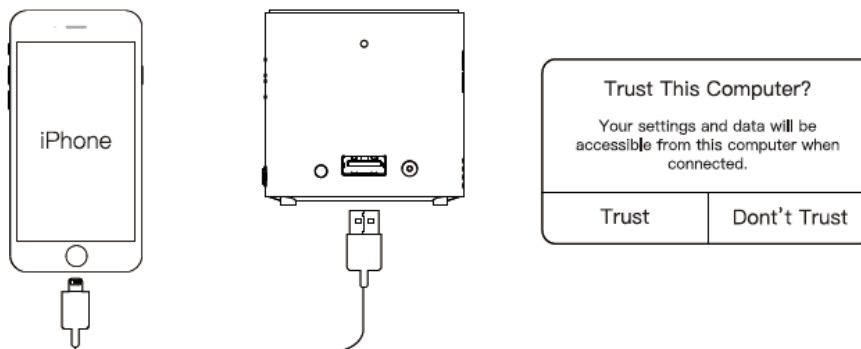
### 2. Connect with Projector

Run "EShare" app, then EShare will search for the projector which share the same network with it automatically. When EShare find the device, click projector name on the device list to build the connection



## iOS screen-sharing via wire

Use USB cable to connect iOS device like iPhone or iPad with projector;  
When there is a prompt saying "Trust This Computer?" select "Trust". Wait for seconds, cellphone screen will synchronize with the projector screen.



## Upgrade on line

System Apps – All Apps – Wireless Upgrade – Operate according to the tips on the screen.



## Use U-disk/TF card to root

After projector is fully charged, rename the file from after-sale to update\_sd.zip and copy it to the root directory of U-disk or TF card. Insert U-disk or TF card to any USB port of projector, open projector then select setting – local upgrade. Click it to upgrade.

## PC upgrade instruction

1. Preparation: Download installation tool (<https://pan.baidu.com/s/1FbENObWwmTWfHb35XLozPA>)  
Diver installation  
open diver setup file to install until finished (for win7 system, install with Administrator identity. For one PC, on the condition that tools and driver setup path keep unchanged, the driver installation only need once).
2. Prepare upgrade tool, firmware (the suffix should be .img), power adapter, machine that needs to be upgraded and corresponding USB cable.
3. Upgrade Preparation: Operate device in upgrade mode and connect with PC.

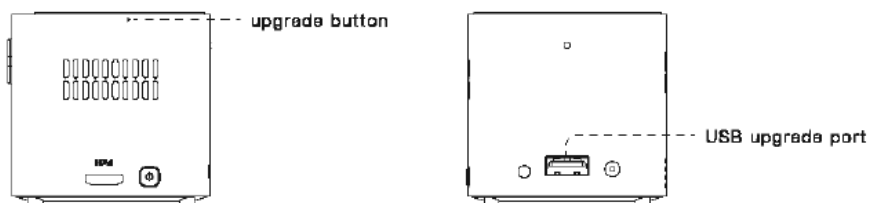
## PC upgrade instruction

### 4. Operate device in upgrade mode

- a. connect with computer: use USB cable to connect machine USB upgrade port and PC.
- b. Machine will enter root mode.

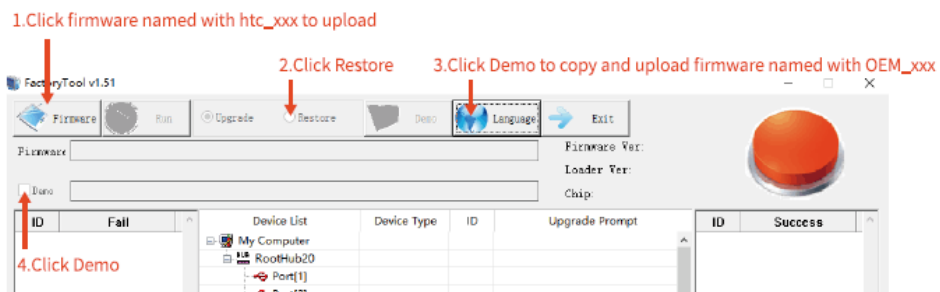
### Root mode instruction:

Using something long and hard to long-press the upgrade button (until there is a loader shown on the root tool), short-press the power button at the same time.



## PC upgrade instruction

4. Unzip the firmware and save as .img format. Open tool and click firmware, find the place of firmware for storage and load it.



### **Disclaim**

Thanks for choosing our products. The pictures, functions described in this user manual may be different from actual items or actual presetting of the machine, specific please in kind prevail. Our company is devoting to perfecting product performance and intensifying product functions, we reserve the interpretation right of the product function and interface described in this manual. Please in kind prevail.

Please keep your device properly. If you have any question during the use of our products please feel free to contact us, we will try to help you. The company is not responsible for any third-party claims caused by users download or install any third apps by their own.

This manual has been carefully reviewed by professional engineer, but there are inevitable some omissions. Thanks for your understanding and correction.



**Attention:** when projector is working, please do not look directly into the lens, the strong light will flash your eyes and cause slight pain if your eyes are close to the lens. Children should use the projector under the supervision of adults.

## **FCC Statement**

This device complies with part 15 of the FCC rules. Operation is subject to the following two conditions: (1) this device may not cause harmful interference, and (2) this device must accept any interference received, including interference that may cause undesired operation.

Changes or modifications not expressly approved by the party responsible for compliance could void the user's authority to operate the equipment.

NOTE: This equipment has been tested and found to comply with the limits for a Class B digital device, pursuant to part 15 of the FCC Rules. These limits are designed to provide reasonable protection against harmful interference in a residential installation. This equipment generates uses and can radiate radio frequency energy and, if not installed and used in accordance with the instructions, may cause harmful interference to radio communications. However, there is no guarantee that interference will not occur in a particular installation. If this equipment does cause harmful interference to radio or television reception, which can be determined by turning the equipment off and on, the user is encouraged to try to correct the interference by one or more of the following measures:

- Reorient or relocate the receiving antenna.
- Increase the separation between the equipment and receiver.
- Connect the equipment into an outlet on a circuit different from that to which the receiver is connected.
- Consult the dealer or an experienced radio/TV technician for help.

The device has been evaluated to meet general RF exposure requirement. The device can be used in portable exposure condition without restriction.

For Remote control

The device has been evaluated to meet general RF exposure requirement. The device can be used in portable exposure condition without restriction.