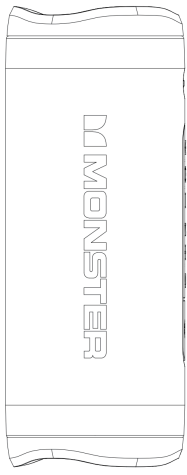


105 mm

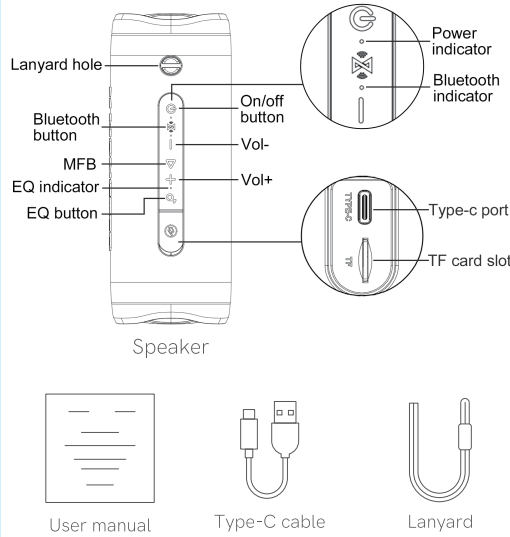
70 mm

WIRELESS SPEAKER User Manual



MS62120

Overview



User manual Type-C cable Lanyard

Above pictures are for reference only,
please make the objects as the standard.

Functions

On/off button:

👉 2s Power on/off

Bluetooth button:

Note: Bluetooth mode is the default upon you power on the speaker.

👉 3s TWS pairing mode

👉 X1 Disconnect Bluetooth connection/Quit TWS mode

👉 X2 Switch between Bluetooth and TF card input

Vol- button:

👉 X1 Volume down

👉 2s Skip track backward

MFB:

👉 X1 Play/Pause Answer/end call

👉 2s Ignore call

👉 X2 Voice assistant

Vol+ button:

👉 X1 Volume up

👉 2s Skip track forward

EQ button

👉 X1 Switch between bass boosted and default EQ settings

X1 Press once X2 Double press

2s Press and hold time

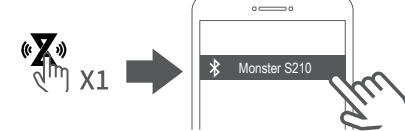
2s Press and hold

How to Use

Power on/off & Charging:

- 👉 2s Power on
- 🔋 Charging
- 🔋 Fully charged
- Solid white
- Solid red
- Red extinction

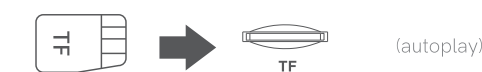
Bluetooth input:



- ☀ Blue light flashing (speaker is connecting to device)
- Solid blue (connected successfully)

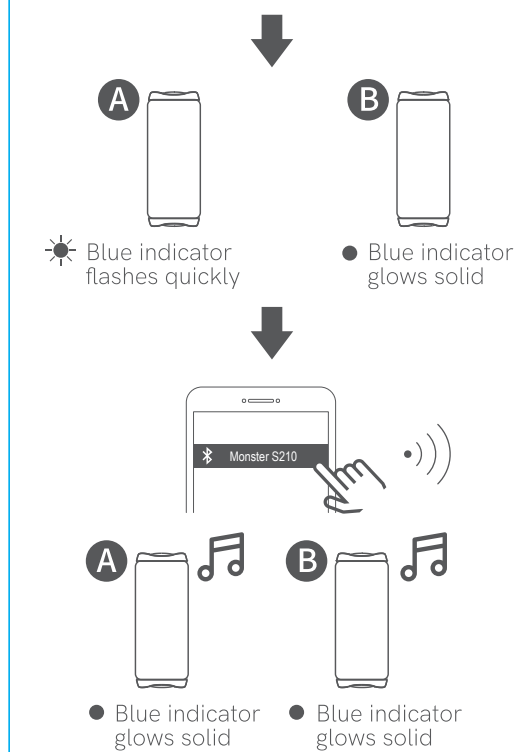
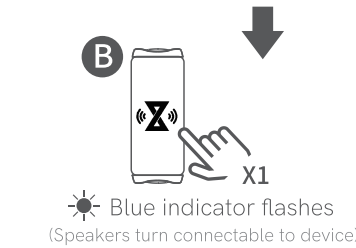
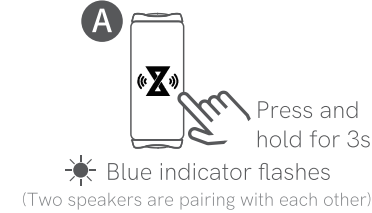
Note: Press Bluetooth button to disconnect the speaker from the device.

TF card input:

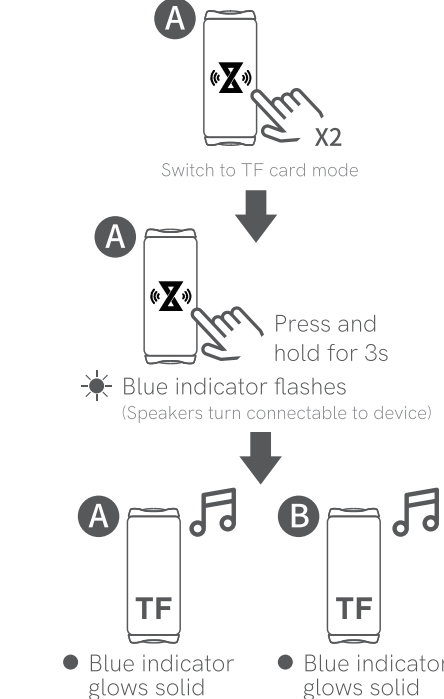


TWS Mode

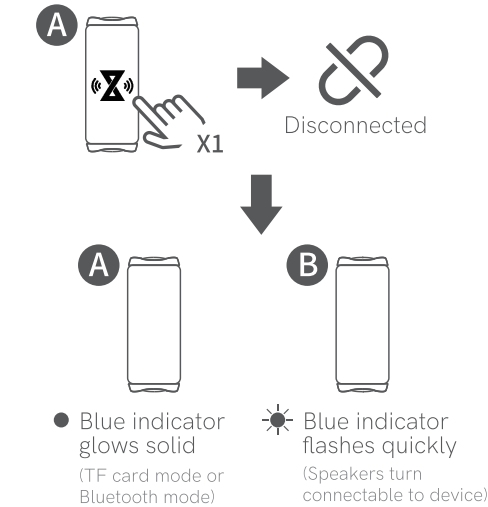
Bluetooth mode:



TF card mode:



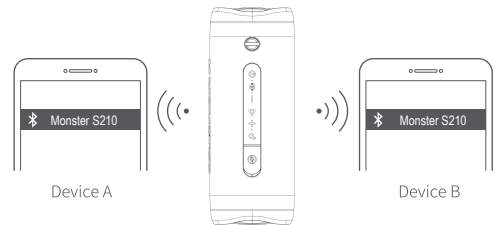
Quit TWS mode:



Note:
1.The speaker you choose to serve as the master will be remembered and the two speakers will auto pair with each other once you power them on again.
2. This function only supports two * MS62120 * Portable Speakers.
3. After two speakers are paired, operation on either of them will be in sync with the other.

Multi-point connection:

1. Power on the speaker and it will auto turn connectable. On Device A, search for Monster S210 and tap to connect. Turn off Bluetooth on Device A and the speaker will auto turn connectable again.
2. On device B, search for Monster S210 and tap to connect.
3. On device A, tap Monster S210 again to finish multi-point connection.



Note: If the speaker is connected to two devices and you need to connect it to a third one, please refer to the above steps. Once it gets connected to the third one, tap Monster S210 on device A/B to finish multi-point connection.

Factory Reset

Keep pressing Bluetooth button for 8s or until you hear a beep. Please refer to How to Use for connection after factory reset.



Auto Power-Off

This function is set by default to protect the speaker battery. After the speaker is turned on, if it is not connected to a Bluetooth device, it will automatically shut down after 10 minutes.

Troubleshooting

What to do if the speaker is mute?

1. Please check if you power it on.
2. Please check sound source input.
3. Please try to increase volume of both the speaker and your device.
4. Please unplug the speaker and reboot it.

What to do if I can't get the speaker connected to my device?

1. Make sure the speaker enters Bluetooth mode and turns connectable (Press Bluetooth button if it is connected to another device now).
2. Make sure the speaker is placed within the operation range of 10m.
3. Try to connect it to another device.

What to do if there are audio dropouts during Bluetooth playback?

Check if you place the speaker within the operation range of 10m or if there is any obstacle between the speaker and your device.

FCC Statement

This equipment has been tested and found to comply with the limits for a Class B digital device, pursuant to Part 15 of the FCC Rules. These limits are designed to provide reasonable protection against harmful interference in a residential installation. This equipment generates uses and can radiate radio frequency energy and, if not installed and used in accordance with the instructions, may causeharmful interference to radio communications. However, there is no guarantee that interference will not occur in a particular installation. If this equipment does causeharmful interference to radio or television reception, which can be determined by turning the equipment off and on, the user is encouraged to try to correct the interference by one or more of the following measures:
-- Reorient or relocate the receiving antenna.
-- Increase the separation between the equipment and receiver.
-- Connect the equipment into an outlet on a circuit different from that to which the receiver is connected.
-- Consult the dealer or an experienced radio/TV technician for help.

This device complies with part 15 of the FCC Rules. Operation is subject to the following two conditions:
(1) This device may not cause harmful interference, and (2) this device must accept any interference received, including interference that may cause undesired operation.

Changes or modifications not expressly approved by the party responsible for compliance could void the user's authority to operate the equipment.

Wireless frequency: 2.402~2.480GHz
RF power of transmission: <4dBm

Important Safety Information

1. Please read this user manual and keep it well,
2. Please use accessories appointed by the manufacturer only.
3. Please follow the instructions to install.
4. It's recommended to use this product in temperature between 0°C and 35°C.
5. Do not get this product damped to avoid the risks of fire and electric shock.
6. Do not use this product near water. Do not immerse this product in any liquid or allow any liquid to drop, splash, or spill onto it.
7. Do not install or use this product near any heat source like radiator, heating equipment and stove among others.
8. Do not put any water container or open fire (like a lit candle) on this product.
9. Do not block up any hole (like air vent) of this product to avoid fire and electric shock.
10. Please ensure sufficient space around this product

11. Do not push the plug into the port before checking if the port is blocked, the plug and port are compatible and the direction is correct.
12. Keep all accessories away from kids who might eat them.
13. This product is not a toy so kids under the age of 14 must be supervised by adults when using it.
14. Do not take apart this product to repair, which might cause electric shock or other risks.
15. This product, damaged due to a damaged power cord or plug, liquid splashes or exposure to rain or moisture, or malfunction, must be repaired by a professional engineer.
16. Please power off the product and unplug its cord before wiping or cleaning with a dry cloth.
17. Do not use strong acids or bases, gasoline, alcohol, or other chemical solvents to wipe the product. If you have to do so, use a neutral solvent or water instead.
18. The short-wave radio signals emitted by this product may affect other electronic devices and medical equipment. Please turn off this product in areas where it is prohibited.

High volume may cause hearing damage so please reduce it to a safe level.

Notice: This marking indicates that this product should not be disposed with other household wastes throughout the EU. To prevent possible harm to the environment or human health from uncontrolled waste disposal, recycle it responsibly to promote the sustainable reuse of material resources. To return your used device, please use the return and collection systems or contact the retailer where the product was purchased. They can take this product for environmental safe recycling.

Battery Safety

1. Do not disassemble, modify or puncture the battery. Do not place it in high temperature or liquid like water to avoid leakage or explosion. Do not replace the battery by yourself or any third party.
2. Do not drop, squeeze or puncture the battery. Do not press the battery to avoid short circuit or overheating.

Safety Precautions

1. Please carefully read and retain this user manual before using the product.
2. If the product is not used for an extended period (more than 2 weeks), please recharge it.
3. You must choose a charger produced by a legitimate manufacturer and certified by the national safety authority.

4. If your phone cannot detect the Bluetooth earbuds, either re-enter pairing mode or perform a factory reset on the Bluetooth earbuds. If there is a phone program error, close and reopen Bluetooth on the phone or restart the phone.
5. Do not disassemble or modify the battery, insert foreign objects, expose it to high temperatures, or immerse it in water or other liquids to prevent battery leakage, overheating, ignition, or explosion. Battery replacement should only be done by the manufacturer.
6. Do not drop, crush, or puncture the battery. Prevent external pressure that may lead to internal short circuits and overheating.
7. Do not dismantle or modify the earbuds for any reason, as it may result in fire, electronic breakdown, or permanent damage to the product.
8. Do not expose the product to extremely low or high temperatures (below 0°C or above 45°C).
9. Do not the product indicator light near the eyes of children or animals.
10. Do not use the product during thunderstorms, as it may cause abnormal operation and increase the risk of electric shock.
11. Do not use oil or other volatile liquids to clean the product.

the power delivered by the charger must be between min 5 Watts required by the radio equipment, and max 10 Watts in order to achieve the maximum charging speed

This device contains licence-exempt transmitter(s)/ receiver(s) that comply with Innovation, Science and Economic Development Canada's licence-exempt RSS(s). Operation is subject to the following two conditions:

- (1) This device may not cause interference.
- (2) This device must accept any interference, including interference that may cause undesired operation of the device.

L'émetteur/récepteur exempt de licence contenu dans le présent appareil est conforme aux CNR d'Innovation, Sciences et Développement économique Canada applicables aux appareils radio exempts de licence. L'exploitation est autorisée aux deux conditions suivantes :
(1) L'appareil ne doit pas produire de brouillage;
(2) L'appareil doit accepter tout brouillage radioélectrique subi, même si le brouillage est susceptible d'en compromettre le fonctionnement.