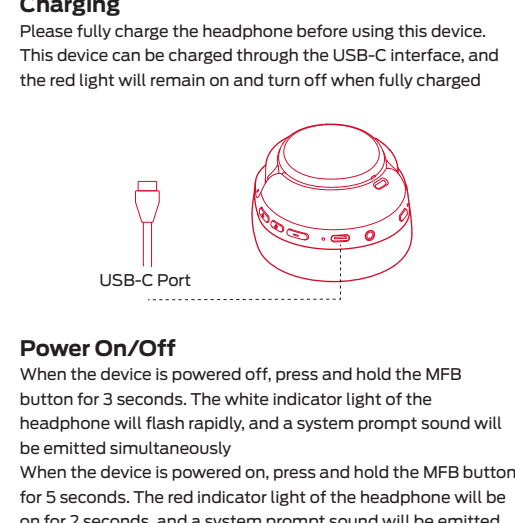
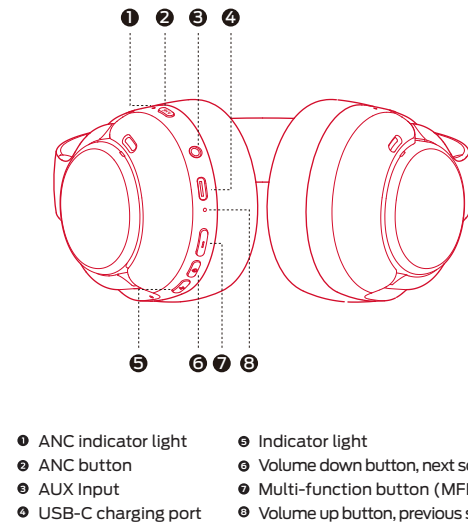


反面



Pairing

In the power off state, long press the MFB button for 3 seconds the white light flashes quickly, and the system will sound at the same time. For new device connection, turn on the Bluetooth in your device and choose **"Monster Persona 5th ANC"** from the Bluetooth list to connect. After successful pairing, the white light keep on for 1 second and turn off

Music

Play/pause: short press the MFB button
Next song: connected phone status, long press the "-" button for 2 seconds
Previous song: connected phone status, long press the "+" button for 2 seconds

Volume Control

Turn down the volume: connected phone status, press the "-" button
Turn up the volume: connected phone status, press the "+" button

Call

Answer/hang up: short press the MFB button
Reject the call: long press the MFB button for 2 seconds
Cancel a call: when the caller does not answer, press the MFB button twice

ANC

Transparent/Noise reduction on/Noise reduction off, short press the ANC button to cycle through (default noise reduction off)

Transparency: white light on continuously

Noise reduction on: white light on continuously

Noise reduction off: light off

Voice Assistant

Connected phone status, press the MFB button twice

Reset

When the headphones are turned on but not connected, quickly press the MFB button 5 times. After clearing the pairing with the mobile phone, re-enter the pairing state

Low Battery

The red light breathing flash

Responsible for your hearing

To avoid hearing loss, turn down the volume of the music player before wearing headset. After putting on the Headphone, slowly adjust the volume to a suitable level

The unit of measurement for noise is (db). Long-term exposure to 85db or higher noise environment may cause hearing loss gradually. Monitor usage; hearing loss is the result of too much noise and time. The louder the sound, the more

time to reduce exposure to noise. The softer the voice, the longer you can listen. Please visit the Consumer Electronics Association website (www.ce.org) to learn how to establish safe listening level and review other important safety guidelines. For important information on how to prevent noise-induced hearing loss (NIHL) and a complete list of what noise can cause hearing loss, please refer to the website of the Foundation for the Study of the Hearing Impairment: www.drf.org

Battery usage note

- There is an explosion risk if the battery is not replaced properly. Batteries can only be replaced with batteries of the same type or equivalent. It is not recommended to replace the battery without permission, but it can be returned to the manufacturer for replacement.
- The cell (battery pack and battery pack and) shall not be exposed to conditions such as sunlight, fire or similar hazardous conditions.

Changes or modifications not expressly approved by the party responsible for compliance could void the user's authority to operate the equipment.

This equipment has been tested and found to comply with the limits for a Class B digital device, pursuant to part 15 of the FCC Rules. These limits are designed to provide reasonable protection against harmful interference in a residential installation. This equipment generates uses and can radiate radio frequency energy and, if not installed and used in accordance with the instructions, may cause harmful interference to radio communications. However, there is no guarantee that interference will not occur in a particular installation. If this equipment does cause harmful interference to radio or television reception which can be determined by turning the equipment off and on, the user is encouraged to try to correct the interference by one or more of the following measures:

- Reorient or relocate the receiving antenna.
- Increase the separation between the equipment and the receiver.
- Connect the equipment to an outlet on a circuit different from that to which the receiver is connected.
- Consult the dealer or an experienced radio / TV technician for help.

Changes or modifications not expressly approved by the party responsible for compliance could void the user's authority to operate the equipment.

This device complies with Part 15 of the FCC Rules. Operation is subject to the following two conditions:

- (1) This device may not cause harmful interference, and
- (2) This device must accept any interference received, including interference that may cause undesired operation.

The device has been evaluated to meet part 15E RF exposure requirement. The device can be used in portable exposure condition without restriction.

FCC ID: 2AVD2-MH22266

Radio Standards Specification RSS-Gen, Issue 5

— English —

This device contains licence-exempt transmitter(s)/receiver(s) that comply with Innovation, Science and Economic Development Canada licence-exempt RSS(s). Operation is subject to the following two conditions:

This device may not cause interference.

This device must accept any interference, including interference that cause undesired operation of the device.

RF exposure statement:

The device has been evaluated to meet general RF exposure requirements. The device can be used in portable exposure condition without restriction.

— French —

Cet appareil contient des émetteurs / récepteurs exemptés de licence conformes aux RSS (RSS) d'Innovation, Sciences et Développement économique Canada. Le fonctionnement est soumis aux deux conditions suivantes:

Cet appareil ne doit pas causer d'interférences.

Cet appareil doit accepter toutes les interférences, y compris celles susceptibles de provoquer un fonctionnement indésirable de l'appareil.

Déclaration d'exposition RF:

L'appareil a été évalué pour répondre aux exigences générales d'exposition aux RF. L'appareil peut être utilisé dans des conditions d'exposition portable sans restriction.