



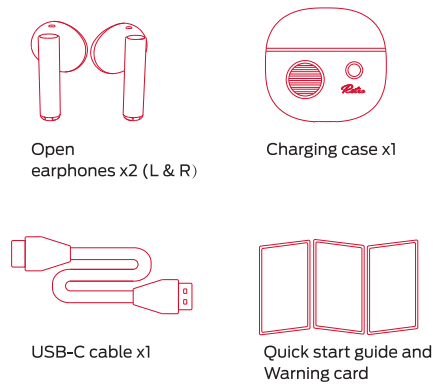
Model No.: MH22237

## N-Lite 213

### QUICK START GUIDE

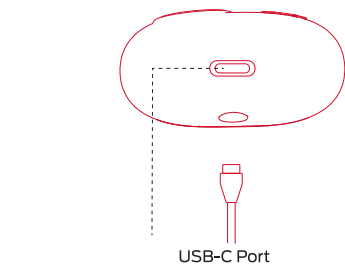
Please read this Quick Start Guide carefully and keep it for future use.

#### Product Overview



#### Charging

Before using the "Monster N-Lite 213", please connect the USB-C cable to a power adapter to begin charging. Fully charge the earphones and the charging case before the first use.



#### Power On/Off

When taken out of the charging case, the earphones will turn on and pair with each other automatically. To turn off the earphones, put them in the charging case, then the earphones will be turned off and start charging.

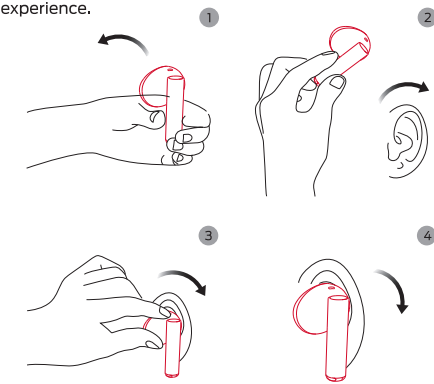
#### Pairing

The earphones will turn on when taken out of the charging case.

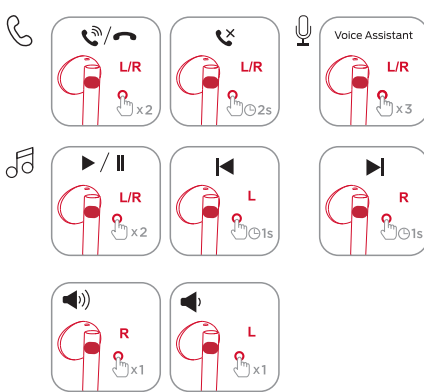
For new device connection, turn on the Bluetooth in your device and choose "Monster N-Lite 213" from the Bluetooth list to connect. You will hear system prompts after the earphones are connected to the device. If the earphones have been connected before, they will connect to the last connected device automatically after being turned on.

#### Wearing

Put the "Monster N-Lite 213" onto your ears and rotate to fit comfortably to get the best wearing and sound quality experience.



#### MFB Operation



#### Indicator/Voice Prompt Guide

LED Indicator (earphone)		
Mode	Description	Voice prompt
Power on	-	Power on
Power off	-	Power off
Connected	-	Connected
Disconnect	-	Disconnected
LED Indicator (charging case)		
Charging	The white light flashes slowly when charging, and the white light stays on when it is full	-
Discharge	When the charging case charges the earphones, the white light stays on and turns off when it is full	-
Low battery	Headphones in the charging case, the white light flashes	-

#### Attention

\*Private replacement of batteries without permission is not recommended.  
\*Batteries [battery packs or battery combinations] should not be exposed to lighting, baking or similar overheating environments.  
\*The input voltage and current standard  $\leq 5V/1A$  when charging the headset charging compartment from an external power source.

#### FCC STATEMENT

Changes or modifications not expressly approved by the party responsible for compliance could void the user's authority to operate the equipment.  
This equipment has been tested and found to comply with the limits for a Class B digital device, pursuant to part 15 of the FCC Rules. These limits are designed to provide reasonable protection against harmful interference in a residential installation. This equipment generates uses and can radiate radio frequency energy and, if not installed and used in accordance with the instructions, may cause harmful interference to radio communications. However, there is no guarantee that interference will not occur in a particular installation. If this equipment does cause harmful interference to radio or television reception which can be determined by turning the equipment off and on, the user is encouraged to try to correct the interference by one or more of the following measures:  
- Reorient or relocate the receiving antenna.  
- Increase the separation between the equipment and the receiver.  
- Connect the equipment to an outlet on a circuit different from that to which the receiver is connected.  
- Consult the dealer or an experienced radio / TV technician for help.  
Changes or modifications not expressly approved by the party responsible for compliance could void the user's authority to operate the equipment.  
This device complies with Part 15 of the FCC Rules. Operation is subject to the following two conditions:  
(1) This device may not cause harmful interference, and  
(2) This device must accept any interference received, including interference that may cause undesired operation.  
The device has been evaluated to meet general RF exposure requirement. The device can be used in portable exposure condition without restriction.  
FCC ID: 2AVD2-MH22237