

Internal photos - WingtraRay

	Name	Role	Date	Visa
Written by	Lukas Sieber	Tech Lead Electronics	2025-06-03	LS

Table of revisions

Revision	Change	Date
A	Creation of initial version	2025-03-20
B	Added more pictures specific to antennas and wiring	2025-05-14
C	Separate pictures for CM4 and WiFi module	2025-06-02

Table of content

Introduction	4
Battery Sockets - Bat1Socket/Bat2Socket	5
Top	5
Bottom	5
Nose Connector Board - NCB	6
Top	6
Bottom	6
Power Distribution Board - PDB	7
Top	7
Bottom	8
Flight Management Unit - FMU	9
Top	9
Bottom	10
GNSS-MosaicX5	11
Top	11
Bottom	11
Onboard Computer - OBC	12
Top	12
Bottom	13
Compute module	14
Top	14
Bottom	14
WiFi module	15
Top	15
Bottom	15
Payload Electronics Stack Connector - PES	16
Top	16
Bottom	16
Payload Interface Board - PIB	17
Top	17
Bottom	17
Camera Control Unit - CCU-Survey61	18
Top	18
Bottom	18
Lidar Control Unit - LCU	19
Top	19
Bottom	19

Navigation and Heading Unit - NHU	20
Top	20
Bottom	20
Tail Distance Sensor - TDS	21
Top	21
Bottom	21
Radar - RDS	22
Top	22
Bottom	22
Electronic Speed Controller - ESC	23
Top	23
Bottom	23
Parachute - PRS	24
Top	24
Bottom	24
Parachute - PRS-Radio	25
Top	25
Bottom	25
Antennas and wiring	26
GNSS (PPK) antenna	26
Telemetry antenna	27
LTE antennas	27
WiFi antenna	28
Wiring	29
Wing left	29
Wing right	30

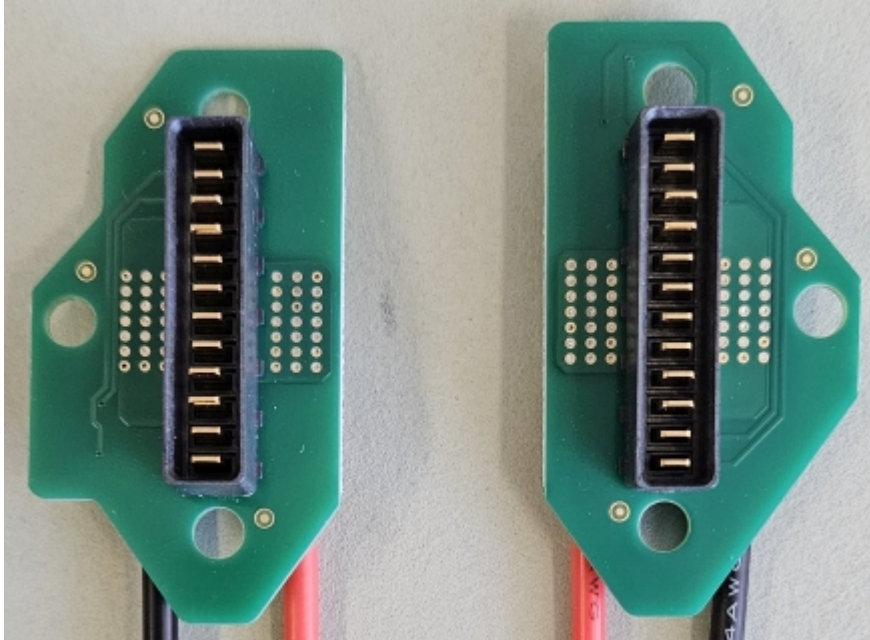
Introduction

The following PCBAs make up the WingtraRay electronics system. Excluded are Battery Management System (BMS) PCBA and the Battery Led (BatLed) PCBA contained in the smart battery because the battery is not in scope of the certification.

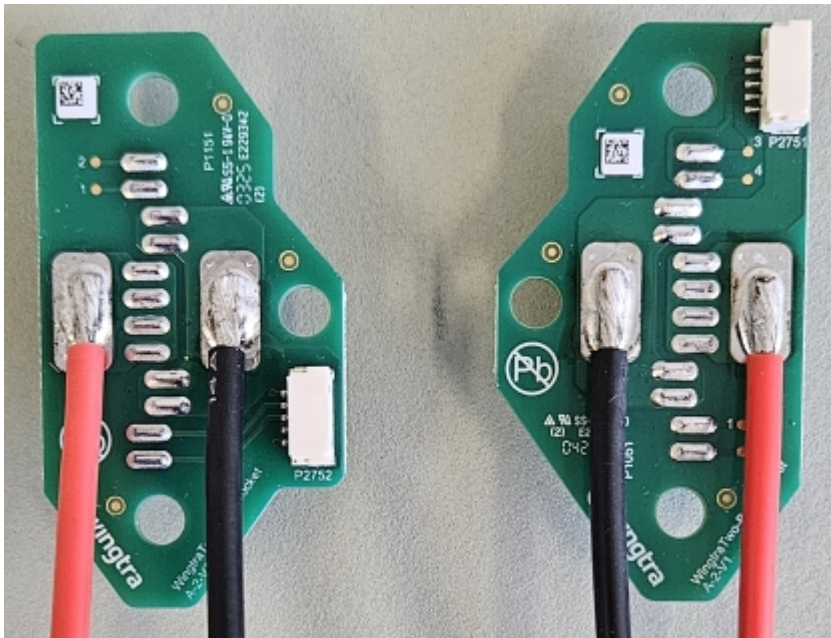
Payload specific PCBAs ([CCU](#) and [LCU](#)) are installed on the payloads which can be swapped in and out of the WingtraRay. Therefore, depending on payload configuration, either a CCU or an LCU is on board the WingtraRay.

Battery Sockets - Bat1Socket/Bat2Socket

Top



Bottom

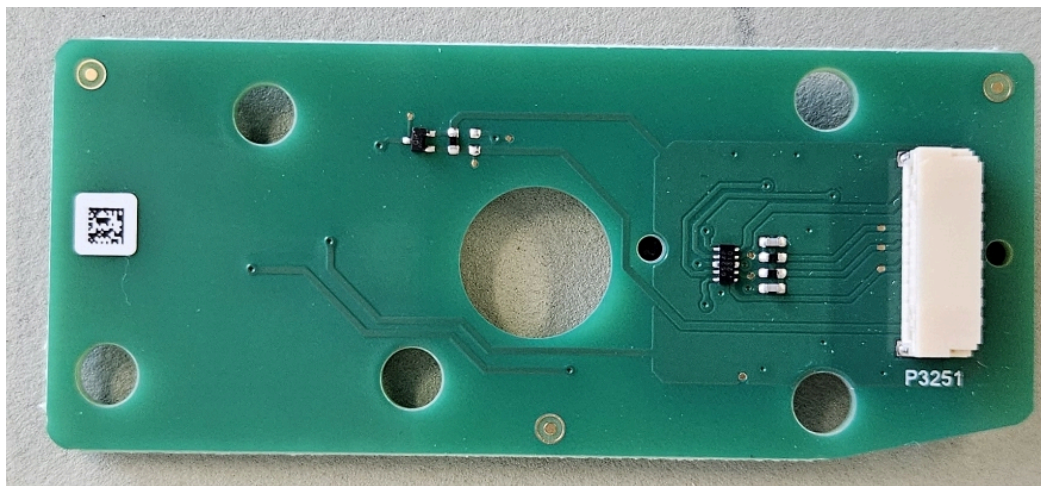


Nose Connector Board - NCB

Top

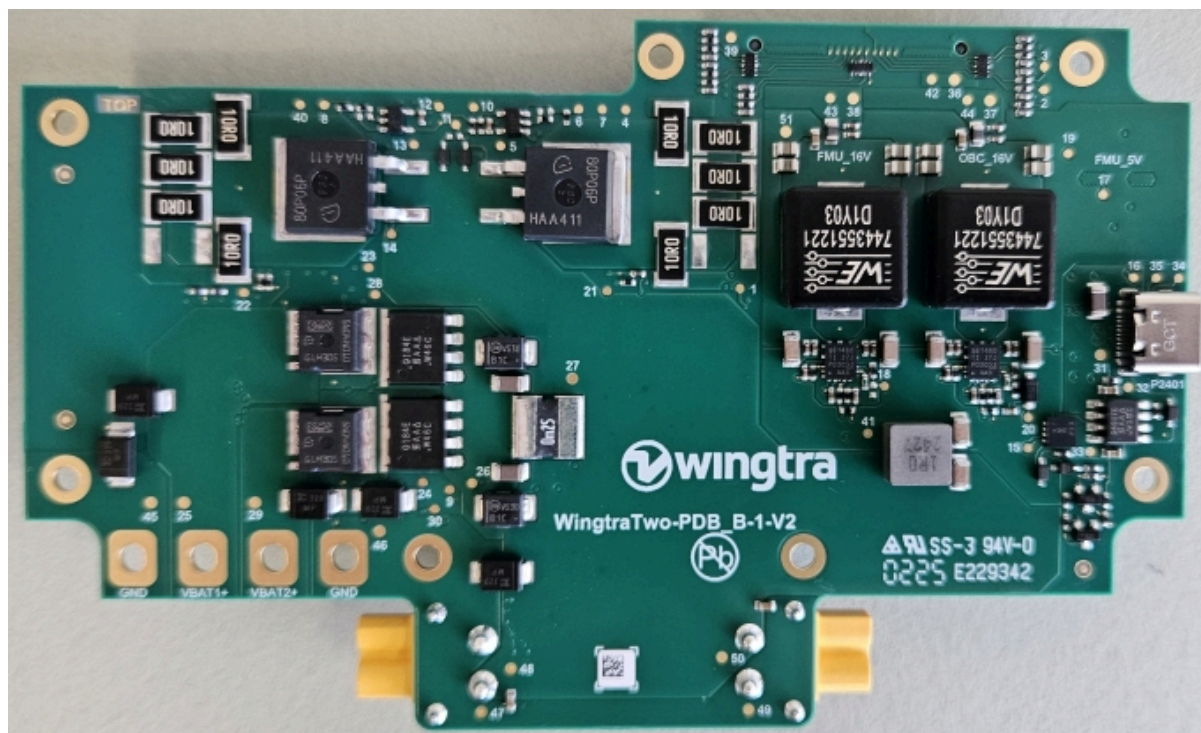


Bottom

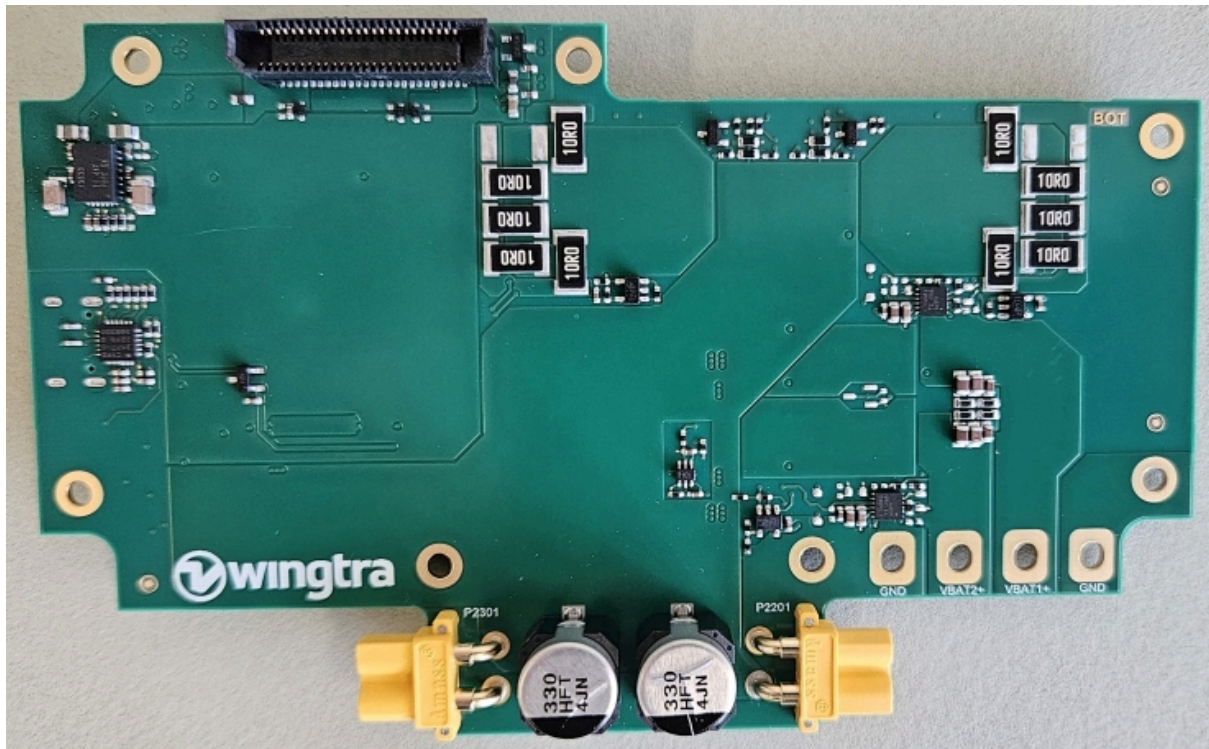


Power Distribution Board - PDB

Top

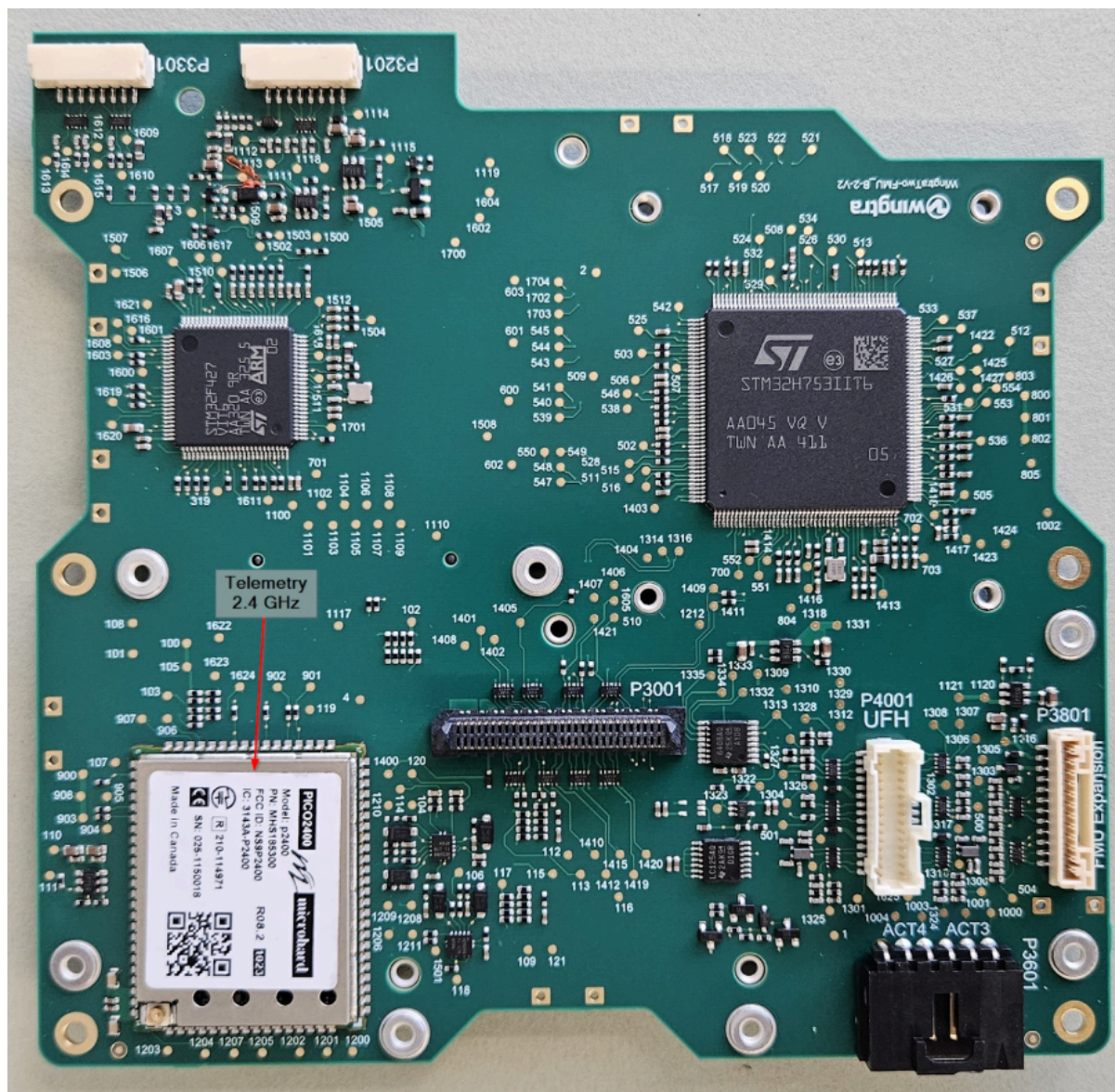


Bottom



Flight Management Unit - FMU

Top



Bottom

