

Wednesday, February 21, 2024



RE: Label Location for FCC application 2AVAZ-CFAS-G5-US

The product label for the cabinet is installed on the inside of the door.
The label has been tested to meet the standards of IEC 62368-1:2018

Figure 1 shows the location of the product label on the inside of the cabinet. Please refer to exhibit 21558-C Label, compliance Cintas, CMKE.pdf; and 21558-D Label, compliance Cintas, CMKE.pdf for label contents details.

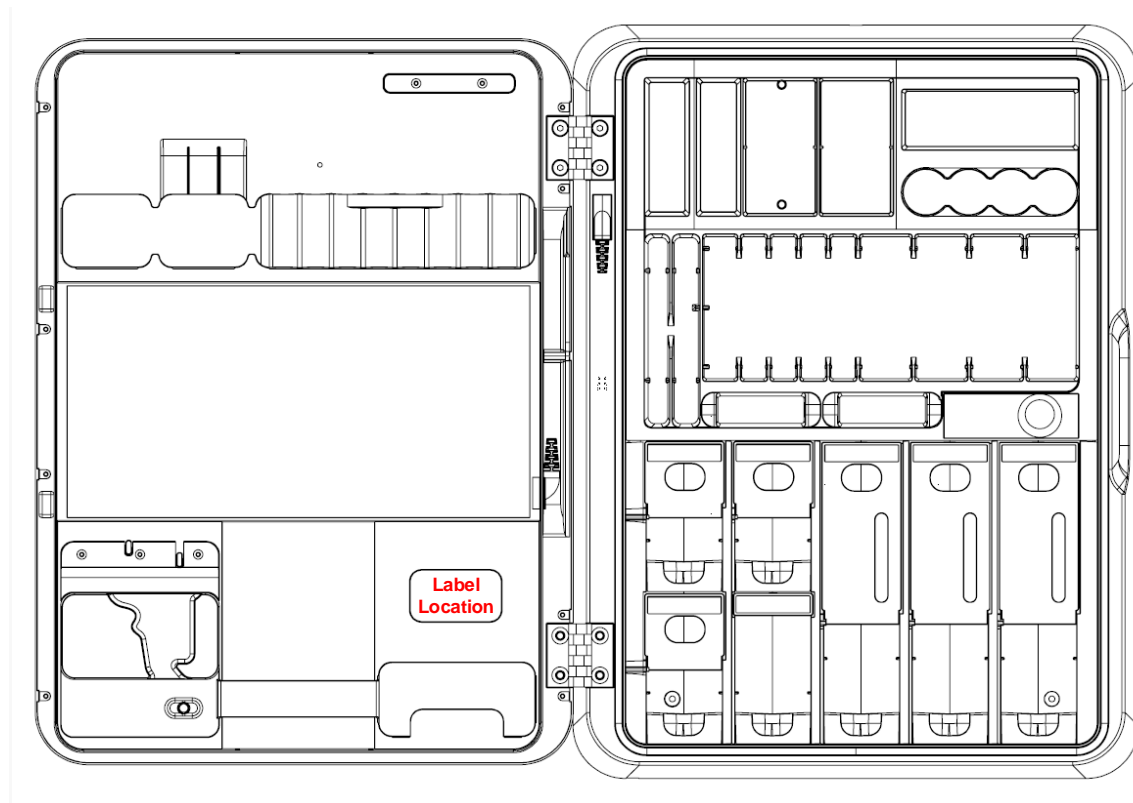
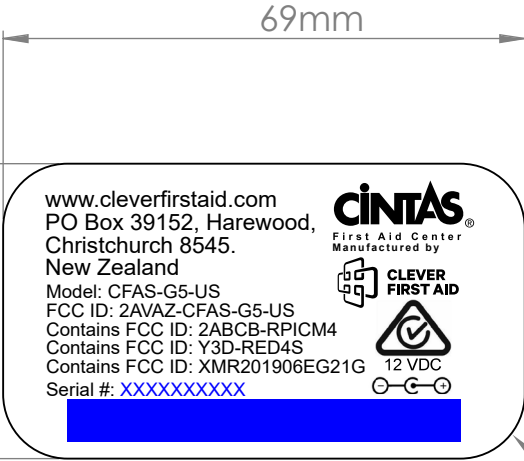
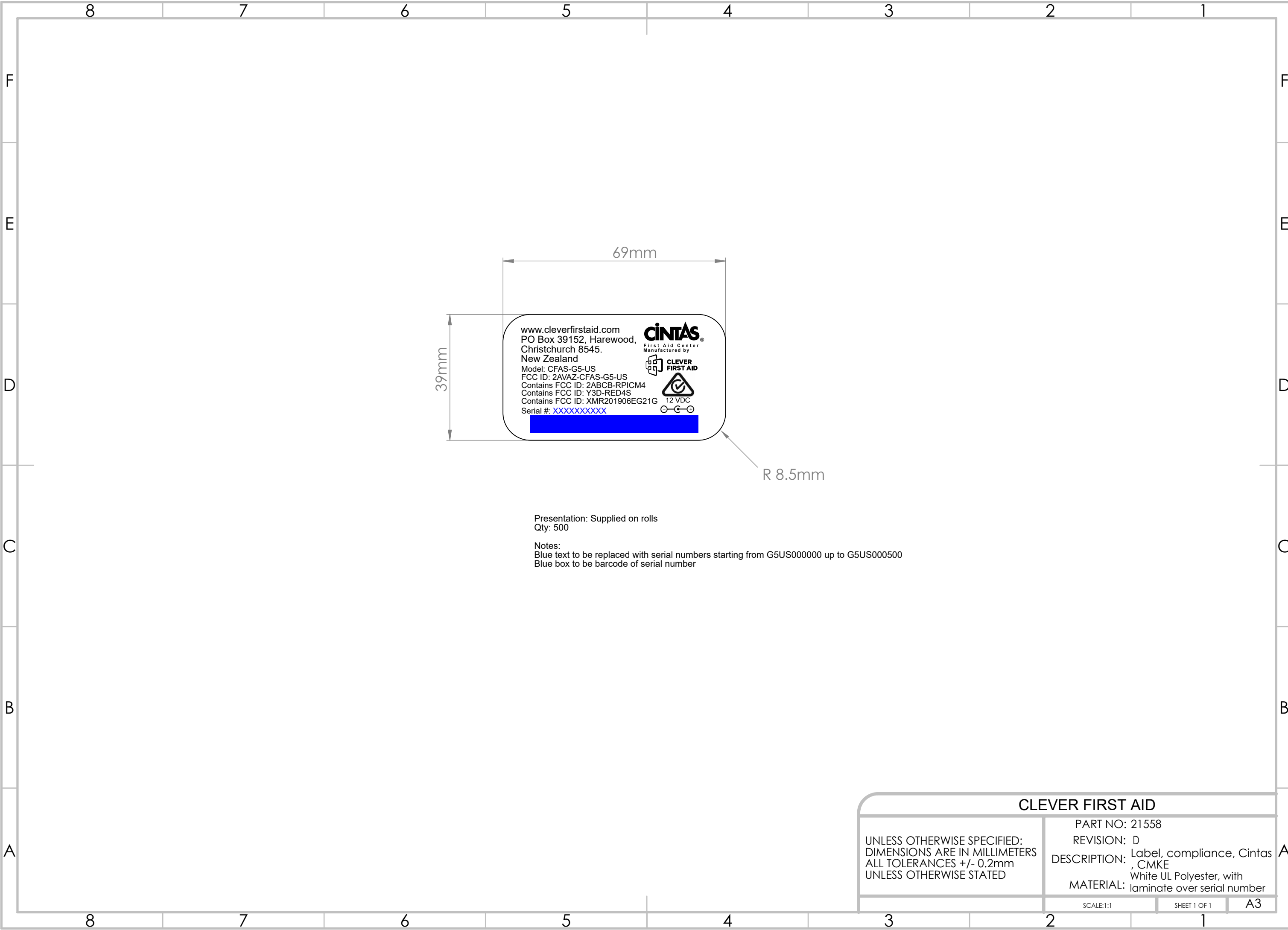


Figure 1: Inside layout of cabinet showing product label location.

cleverfirstaid.com

hello@cleverfirstaid.com

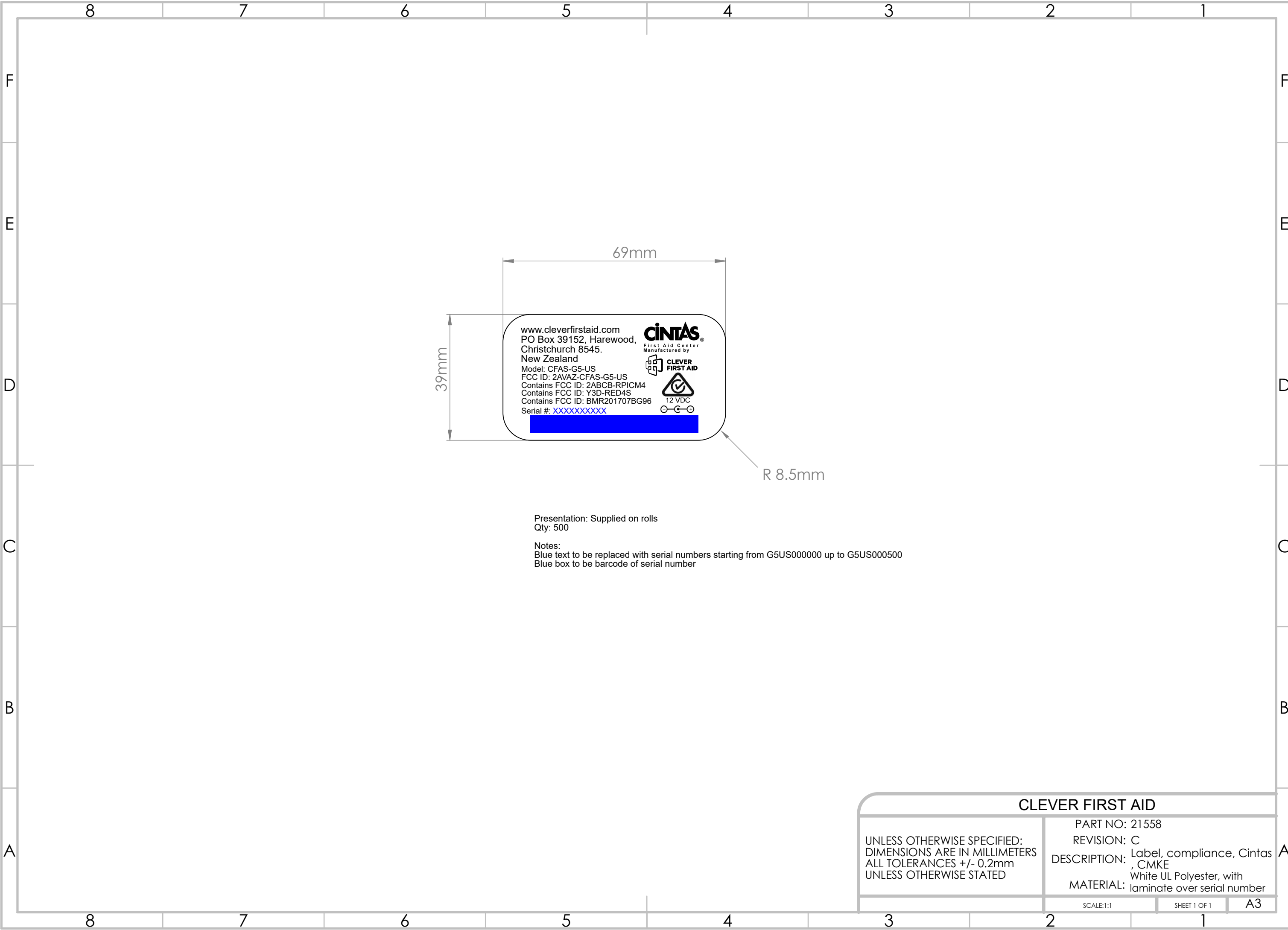




Presentation: Supplied on rolls
Qty: 500

Notes:
Blue text to be replaced with serial numbers starting from G5US000000 up to G5US000500
Blue box to be barcode of serial number

CLEVER FIRST AID		
UNLESS OTHERWISE SPECIFIED: DIMENSIONS ARE IN MILLIMETERS ALL TOLERANCES +/- 0.2mm UNLESS OTHERWISE STATED	PART NO: 21558	
	REVISION: D	
	DESCRIPTION: Label, compliance, Cintas , CMKE	
	MATERIAL: White UL Polyester, with laminate over serial number	
SCALE:1:1		SHEET 1 OF 1
		A3



www.cleverfirstaid.com
PO Box 39152, Harewood,
Christchurch 8545.
New Zealand
Model: CFAS-G5-US
FCC ID: 2AVAZ-CFAS-G5-US
Contains FCC ID: 2ABCB-RPICM4
Contains FCC ID: Y3D-RED4S
Contains FCC ID: BMR201707BG96
Serial #: XXXXXXXXXX

CINTAS
First Aid Center
Manufactured by
CLEVER FIRST AID

12 VDC

Presentation: Supplied on rolls
Qty: 500

Notes:
Blue text to be replaced with serial numbers starting from G5US000000 up to G5US000500
Blue box to be barcode of serial number

CLEVER FIRST AID		
UNLESS OTHERWISE SPECIFIED: DIMENSIONS ARE IN MILLIMETERS ALL TOLERANCES +/- 0.2mm UNLESS OTHERWISE STATED	PART NO: 21558	
	REVISION: C	
	DESCRIPTION: Label, compliance, Cintas , CMKE White UL Polyester, with laminate over serial number	
MATERIAL:		
SCALE:1:1		SHEET 1 OF 1
		A3