

Wednesday, February 21, 2024



RE: PCBA Photos for application of 2AVAZ-CFA-G5-US

21000 CMKE Motherboard & Modules

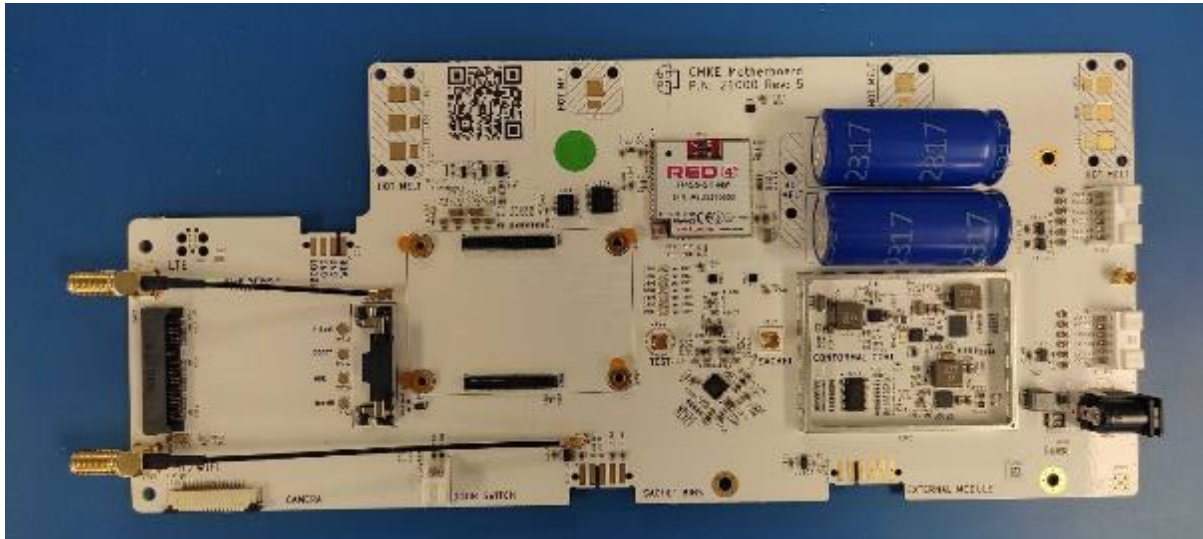


Figure 1: 21000 CMKE Motherboard (top side view)

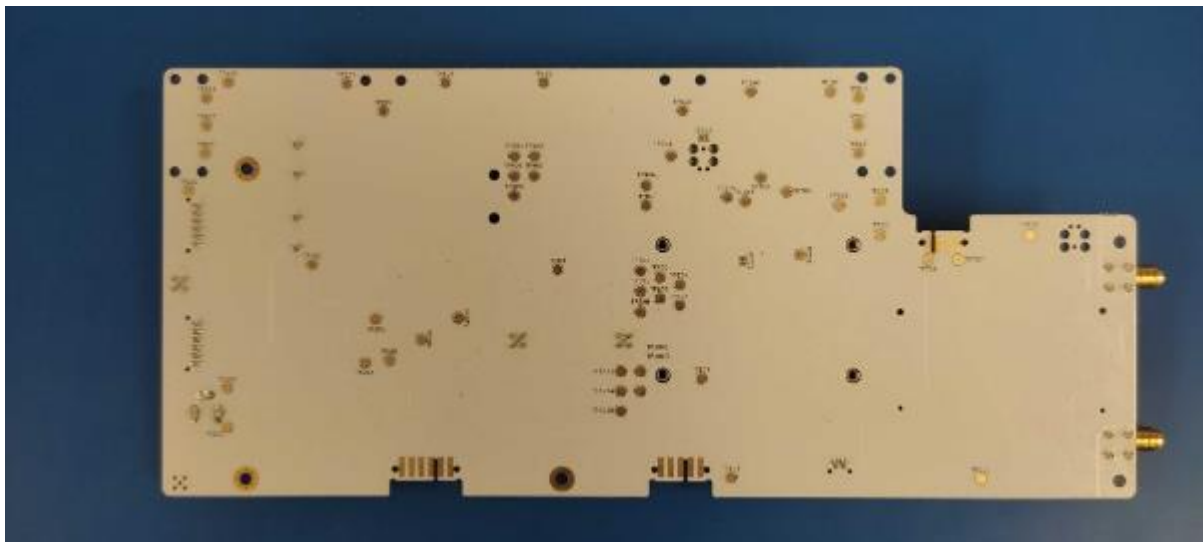


Figure 2: 21000 CMKE Motherboard (bottom side view)

cleverfirstaid.com

hello@cleverfirstaid.com





Figure 3: Raspberry Pi CM4102008 (top side view)



Figure 4: Raspberry Pi CM4102008 (bottom side view)



Figure 5: BG96 minicard-pcie (top side view)



Figure 6: BG96 minicard-pcie (bottom side view)

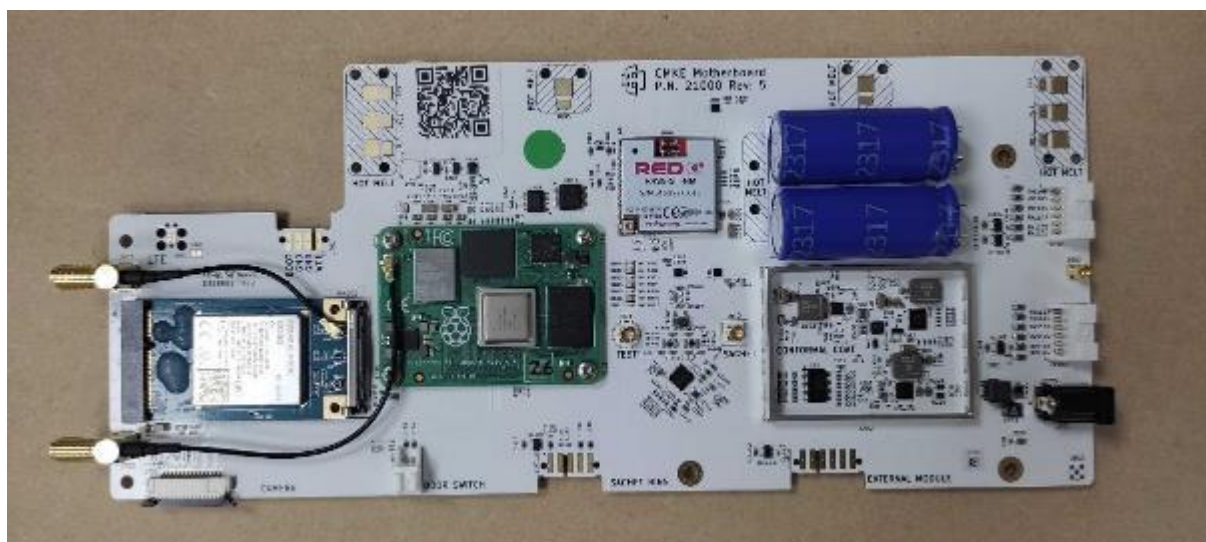


Figure 7: 21000 CMKE Motherboard with attached CM4102008 & BG96

21120 CMKE Door Indication

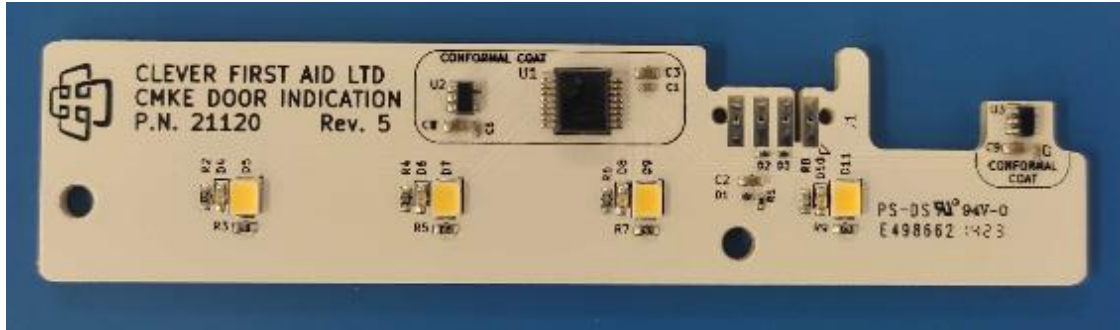


Figure 8: 21120 CMKE Door Indication (top side view)



Figure 9: 21120 CMKE Door Indication (bottom side view)

21170 CMKE Hall 5 Sachet



Figure 10: 21170 CMKE Hall 5 Sachet (top side view)



Figure 11: 21170 CMKE Hall 5 Sachet (bottom side view)

21179 CMKE Hall 1 Sachet



Figure 12: 21179 CMKE Hall 1 Sachet (top side view)



Figure 13: 21179 CMKE Hall 1 Sachet (bottom side view)

21173 CMKE PCB Dipole

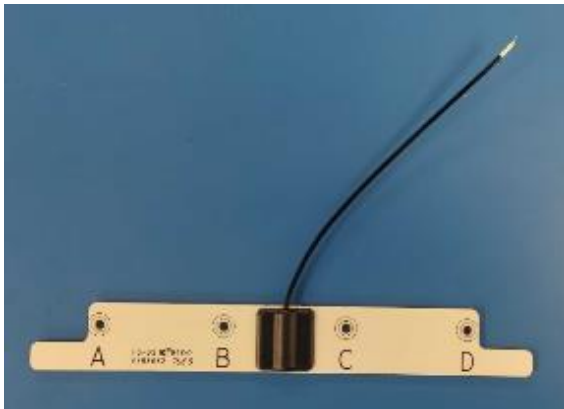


Figure 14: 21173 CMKE PCB Dipole (top side view)



Figure 15: 21173 CMKE PCB Dipole (bottom side view)

21182 CMKE Cap 5 Sachet



Figure 16: 21182 CMKE Cap 5 Sachet (top side view)



Figure 17: 21182 CMKE Cap 5 Sachet (bottom side view)

21188 CMKE Cap Pad 1 Sachet

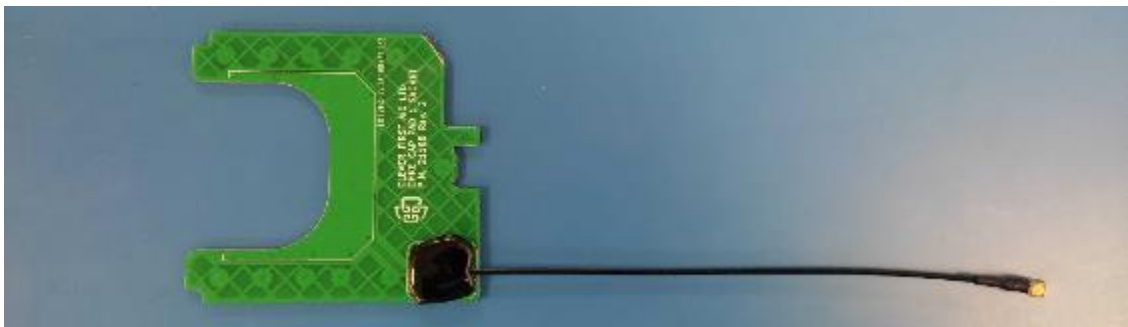


Figure 18: 21188 CMKE Cap Pad 1 Sachet (top side view)



Figure 19: 21188 CMKE Cap Pad 1 Sachet (bottom side view)

21191 CMKE Sachet Antennas

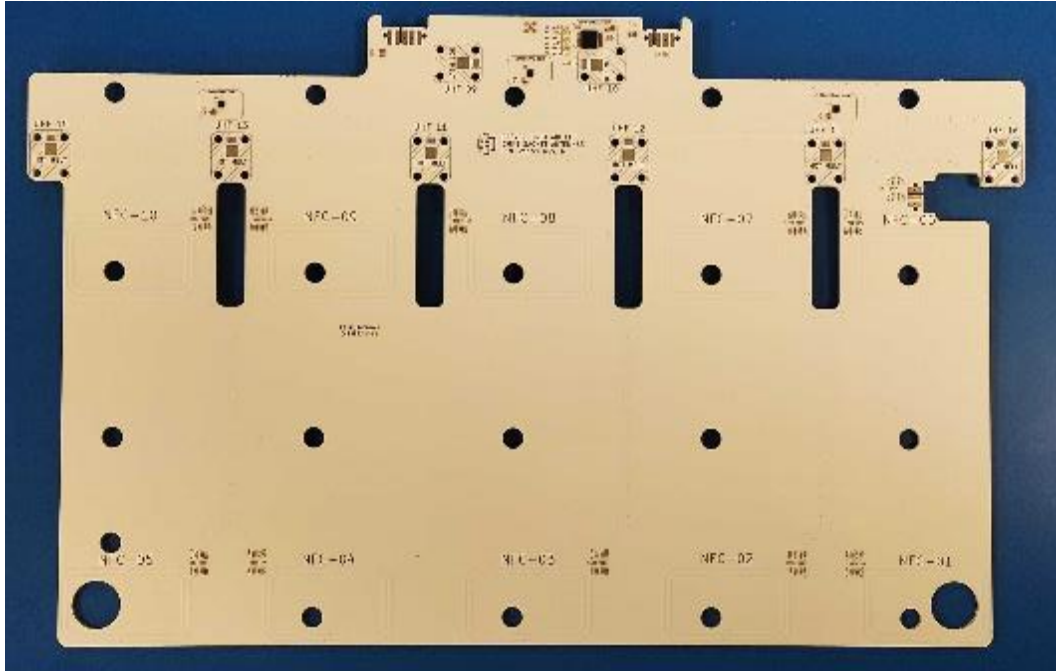


Figure 20: 21191 CMKE Sachet Antennas (top side view)

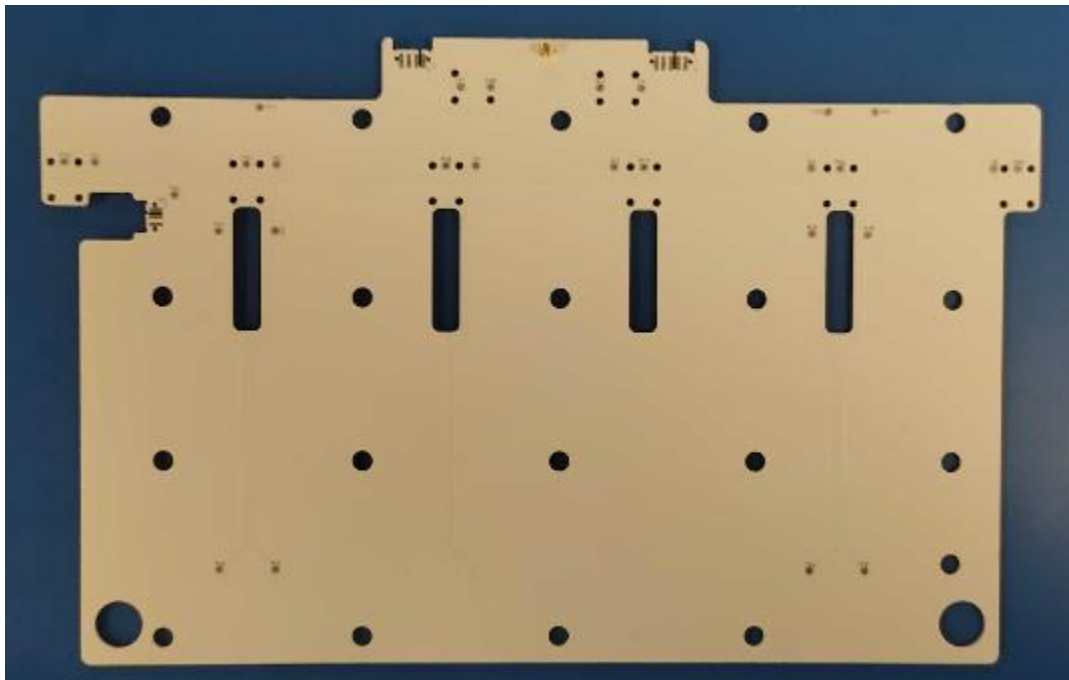


Figure 21: 21191 CMKE Sachet Antennas (bottom side view)

21492 CMKE Door Illumination Large

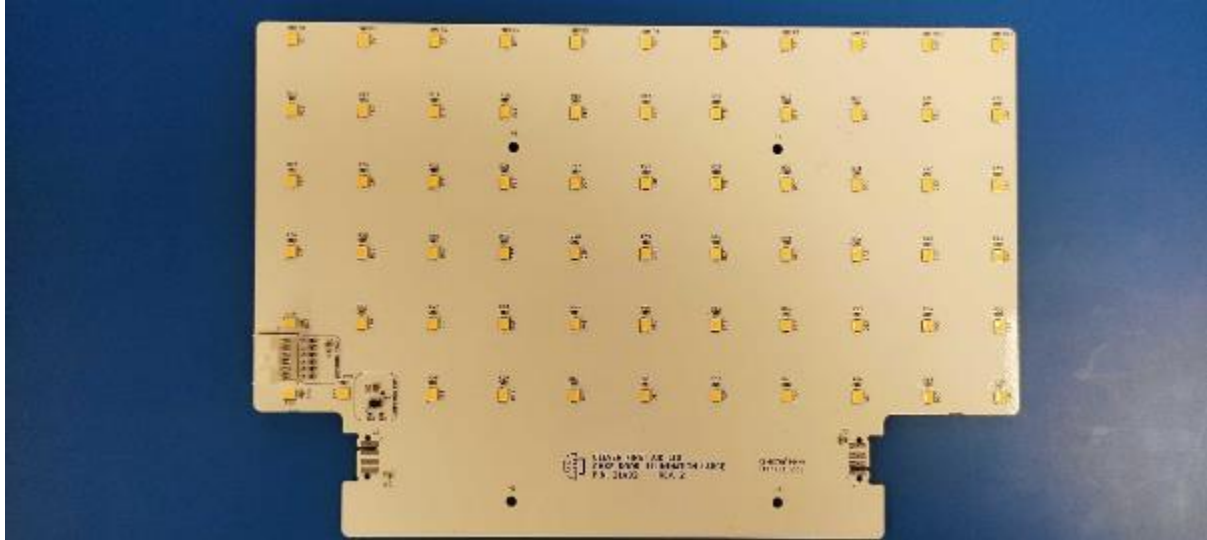


Figure 22: 21492 CMKE Door Illumination Large

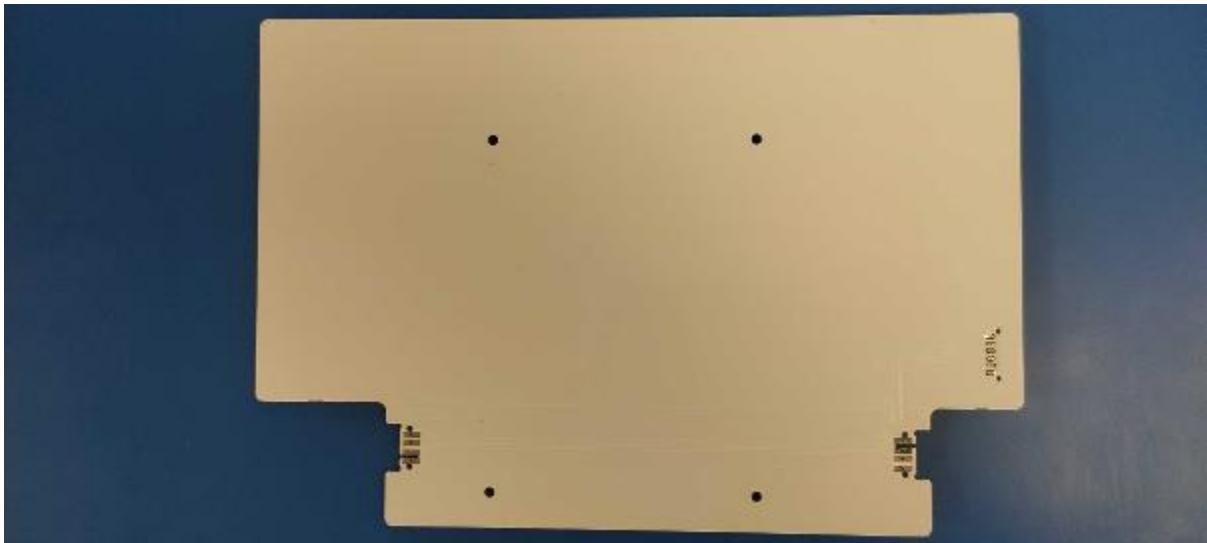


Figure 23: 21492 CMKE Door Illumination Large

21495 CMKE Cap Sensor Tape



Figure 24: 21495 CMKE Cap Sensor Tape (top side view)



Figure 25: 21495 CMKE Cap Sensor Tape (bottom side view)

21429 CMKE Cap Pad Tape



Figure 26: 21429 Cap Pad Tape (top side view)



Figure 27: 21429 Cap Pad Tape (bottom side view)

Wednesday, February 21, 2024



RE: Antenna Location Photos for application of 2AVAZ-CFA-G5-US

LTE & Bluetooth Antennas installed on 21000 CMKE Motherboard.

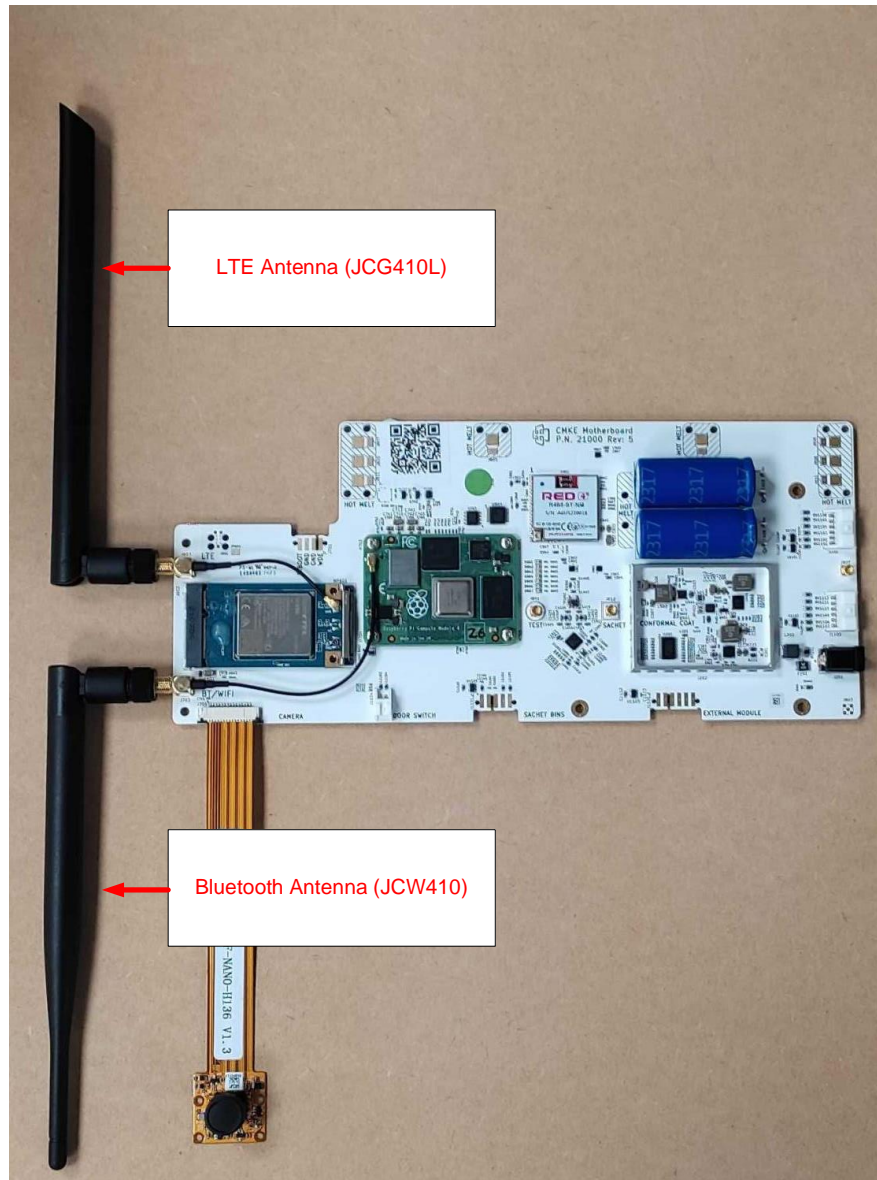


Figure 1: Location of LTE and Bluetooth antennas when installed on 21000 CMKE Motherboard

cleverfirstaid.com

hello@cleverfirstaid.com



21191 CMKE Sachet Antennas Photo

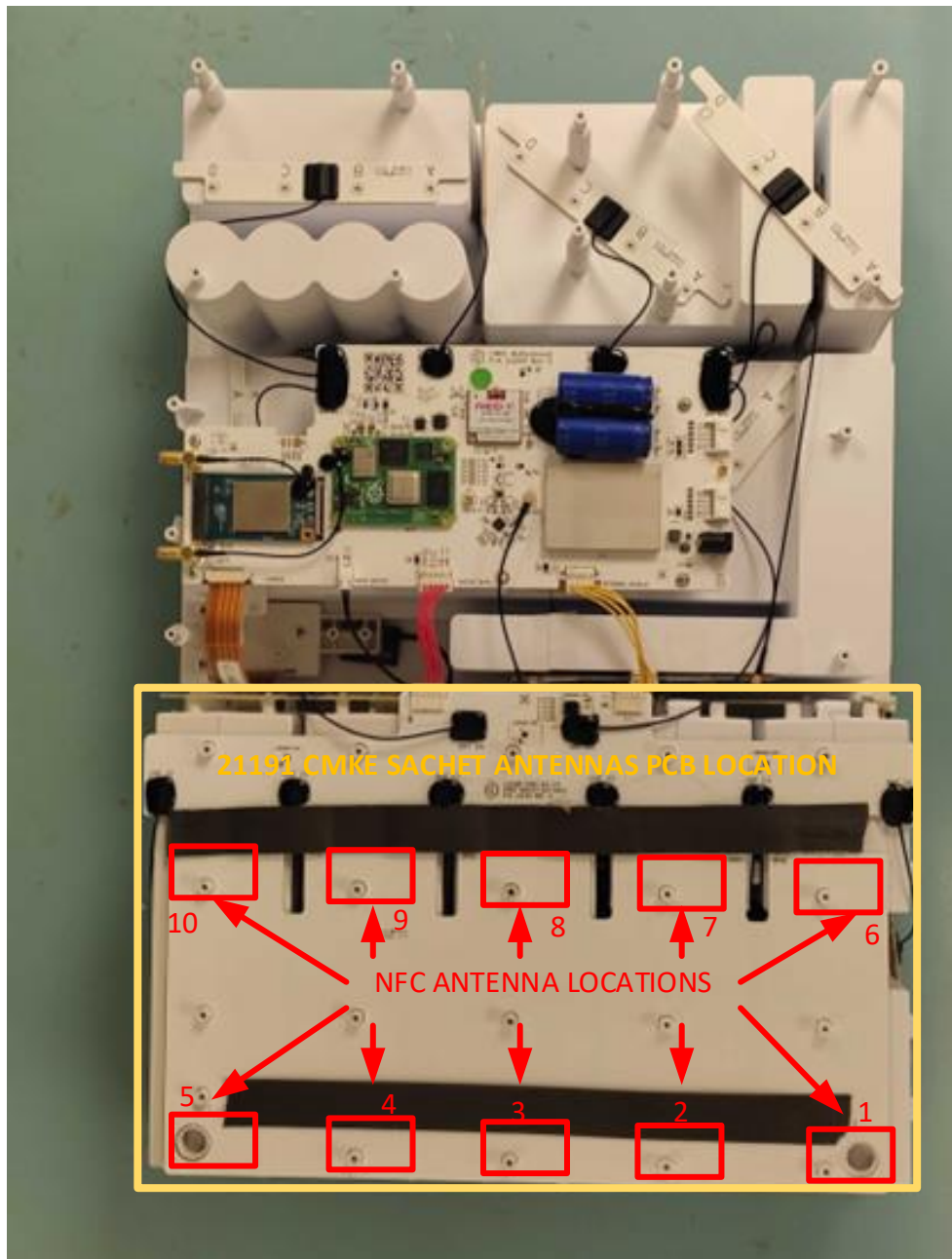


Figure 2: Location of CMKE Sachet Antennas with NFC antenna locations highlighted.

21173 CMKE PCB Dipole Antennas Photos

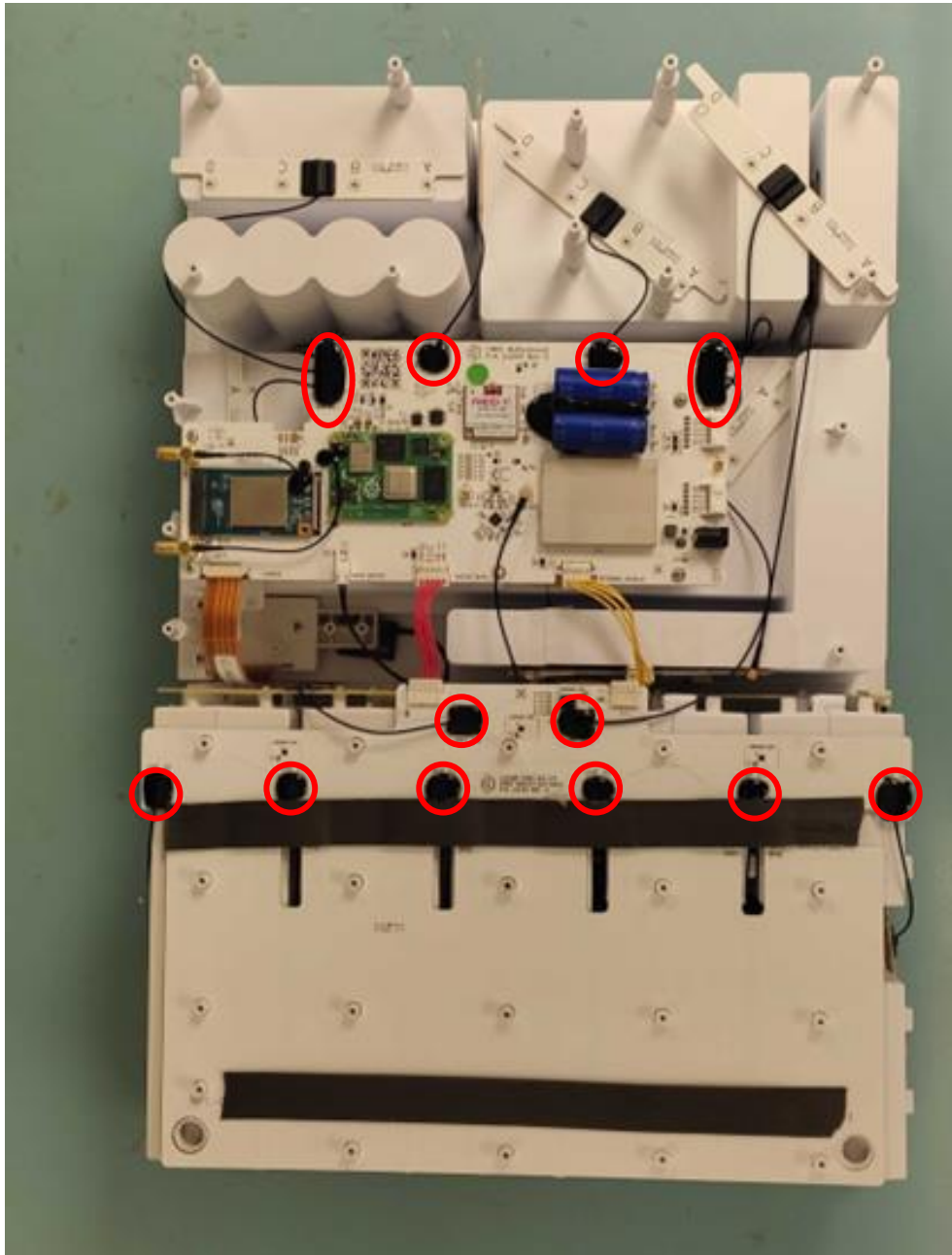


Figure 3: Solder Point locations of 21173 Dipoles.

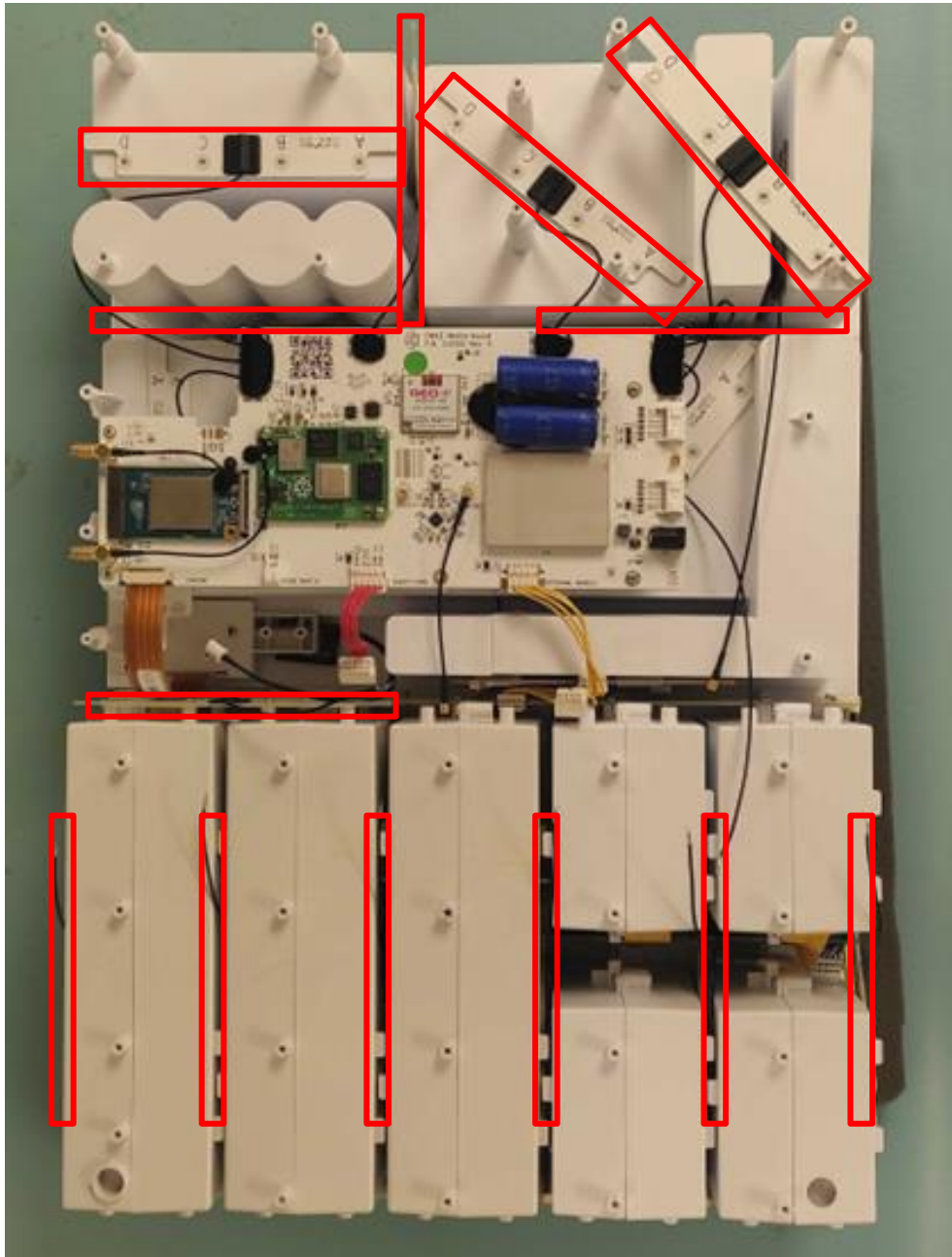


Figure 4: Antenna Locations shown with 21191 removed.

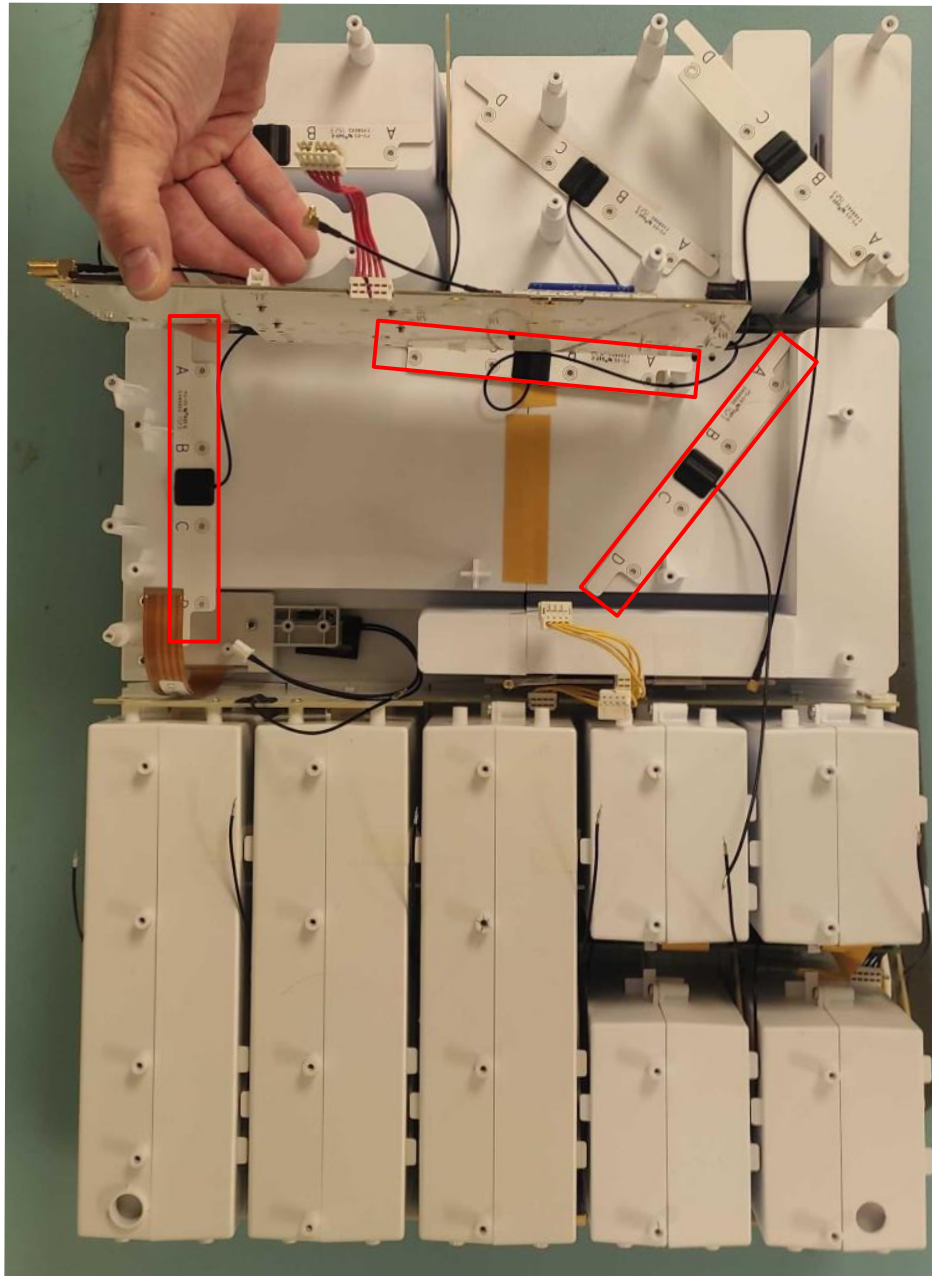


Figure 5: 21000 Lifted to show 21173 Dipole locations.

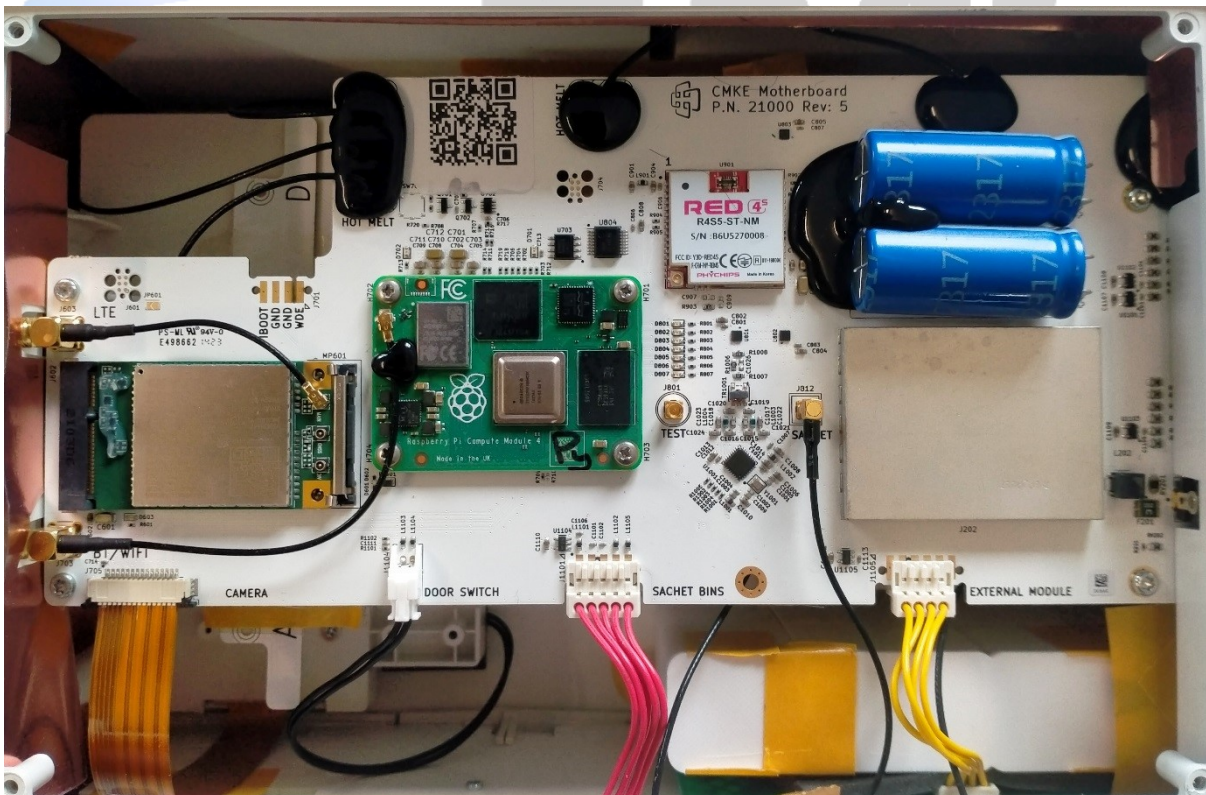


Figure 6: Example of 21173 installed with heat-stake in the sachet bin area.

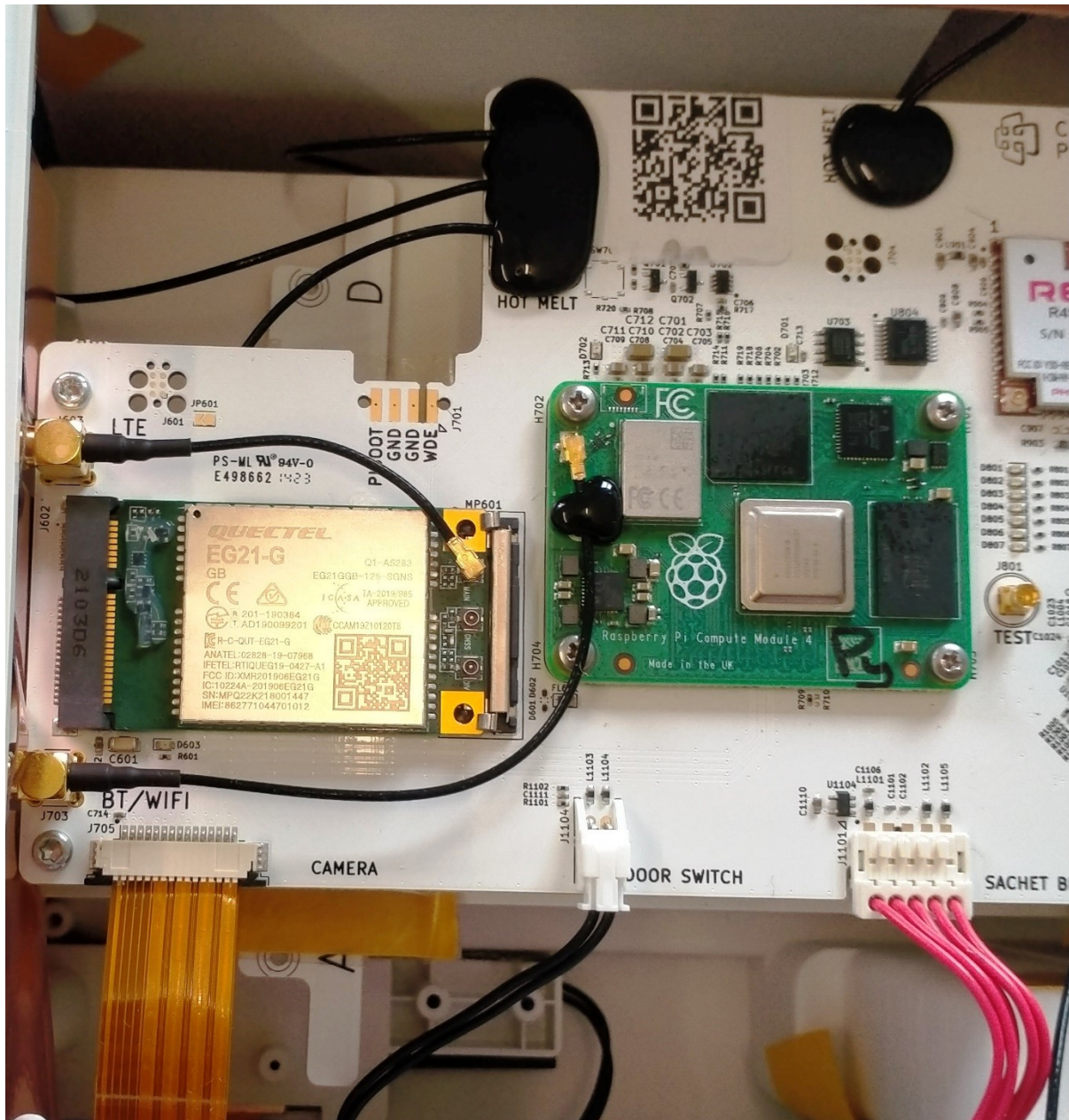
Internal Photos – Main Circuit Board



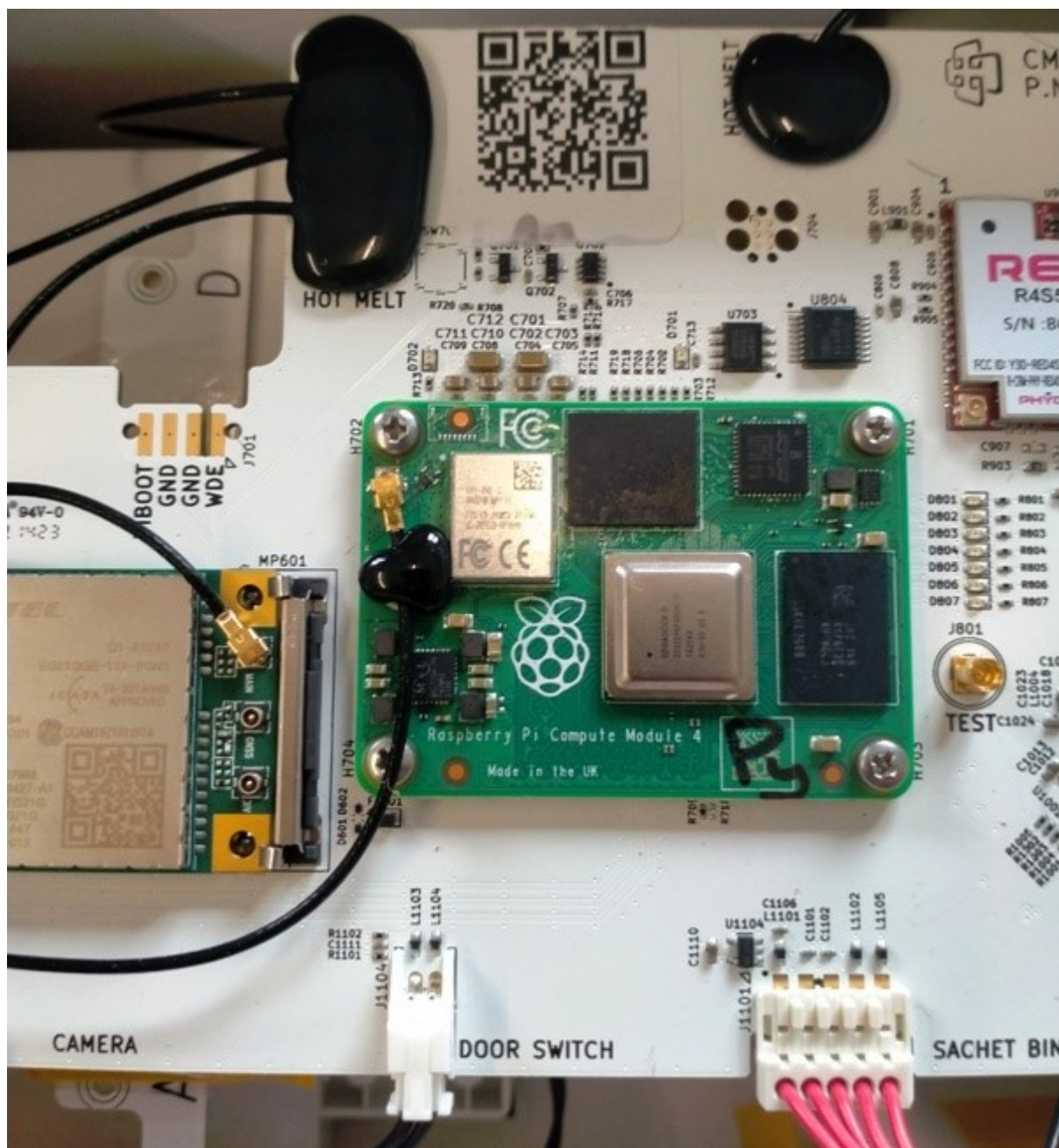
Main Circuit Board showing RED, Raspberry Pi and EG21 Cellular Module



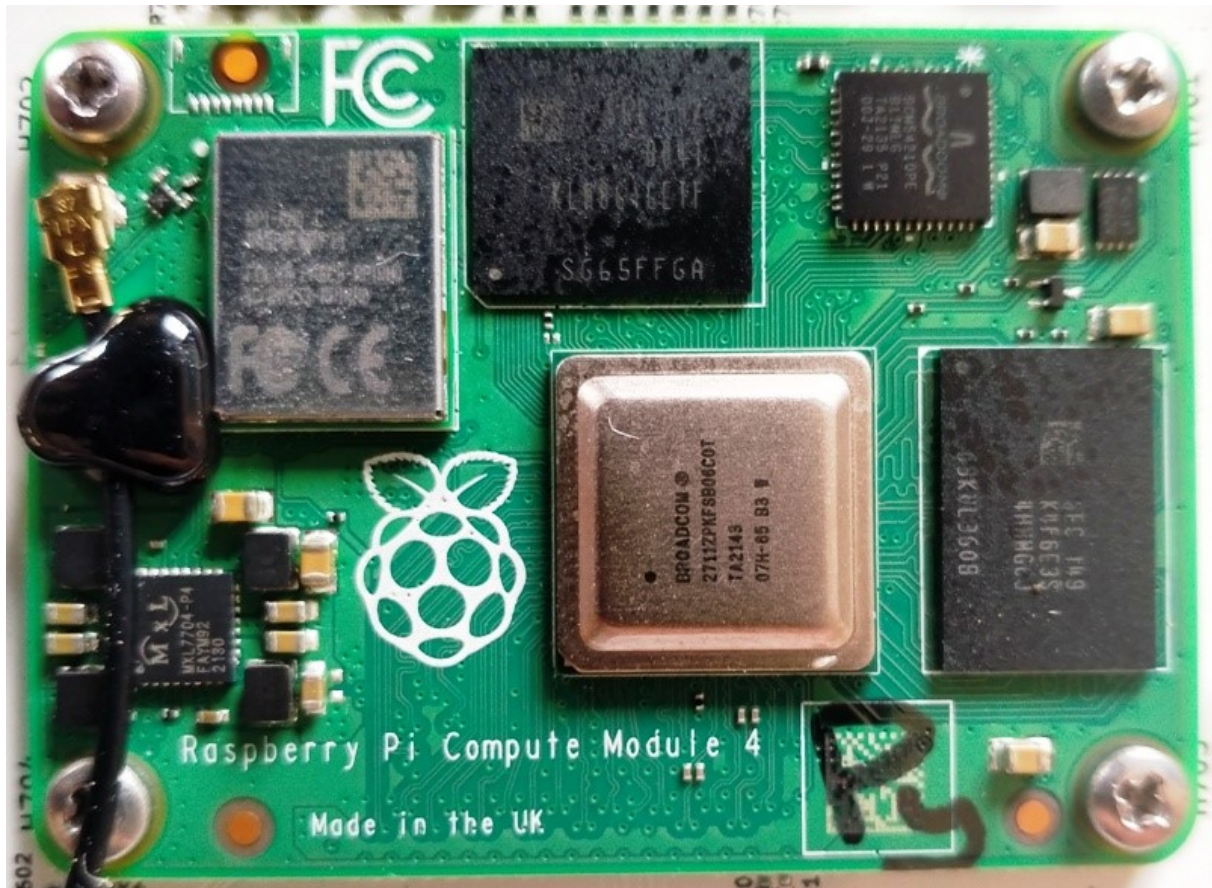
Main Circuit Board showing Raspberry Pi and EG21 Cellular Module



Main Circuit Board showing mainly the Raspberry Pi Module



Close up of the Raspberry Pi Module



Close up of EG21 and the BG96 Cellular Modules

