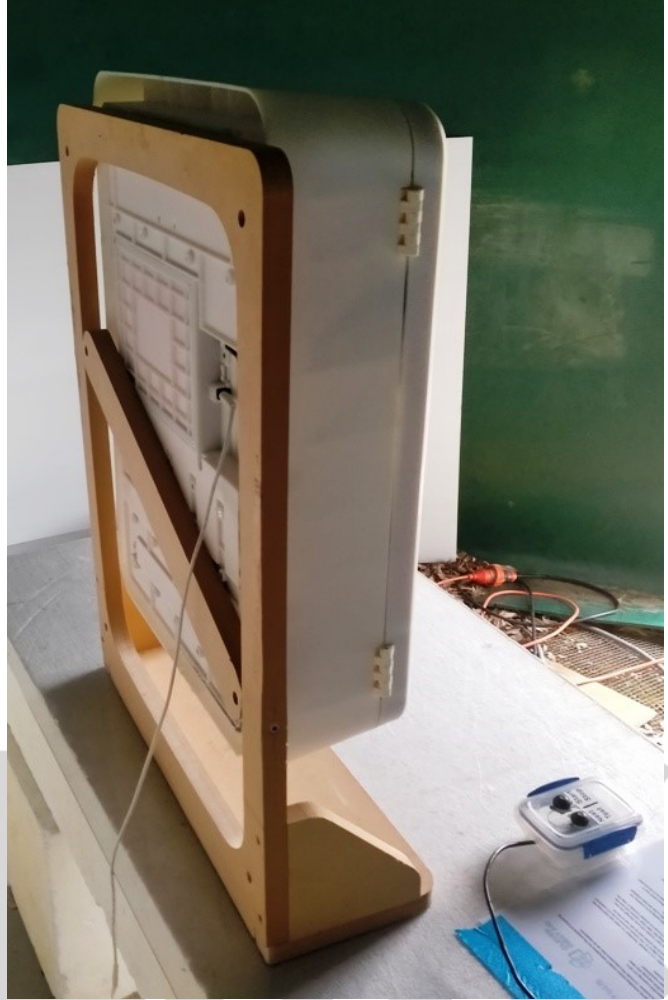


Radiated Emissions Test Setup



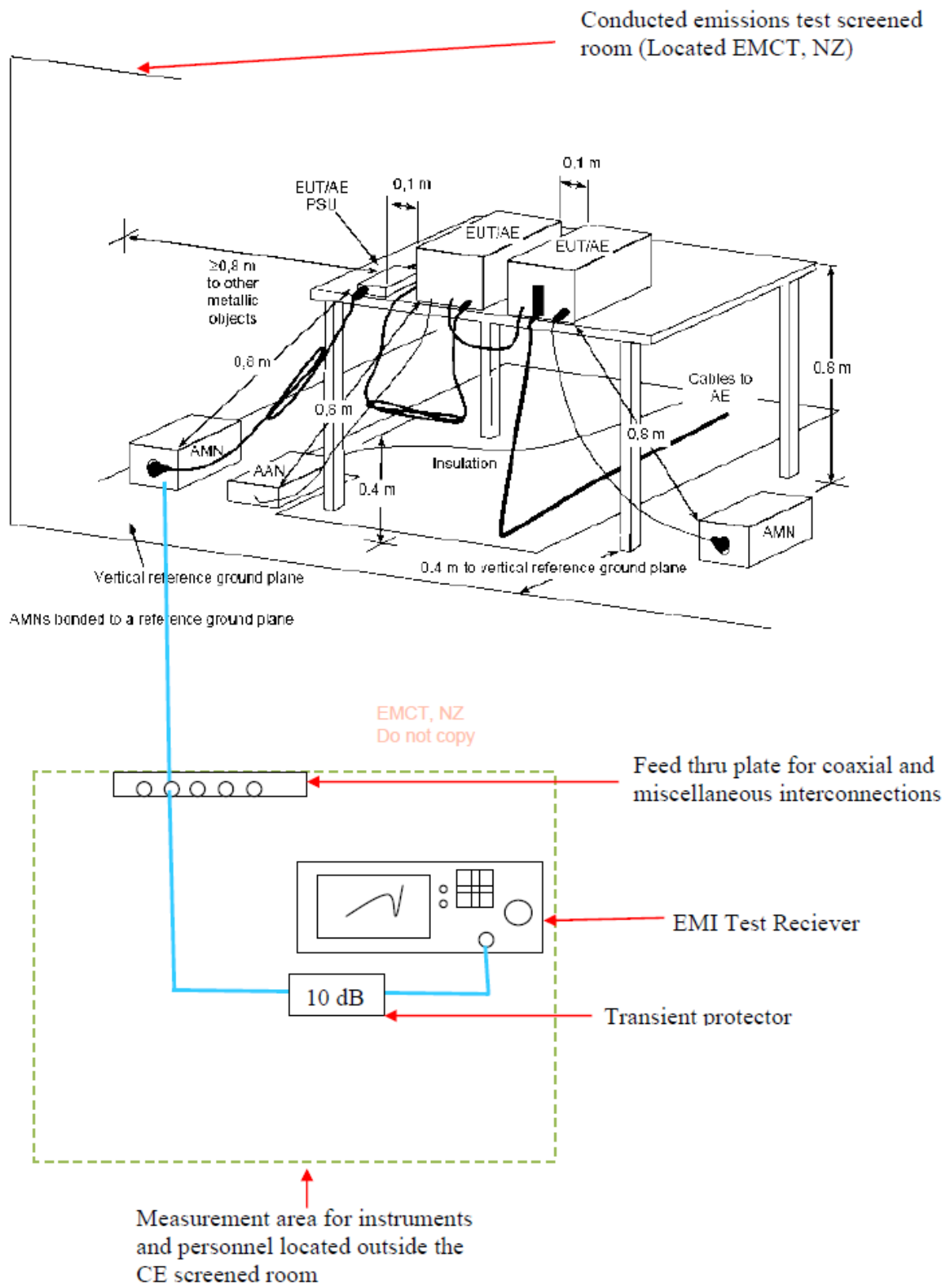




Conducted Emissions Test Set Up



Block Diagram showing the conducted emission test setup

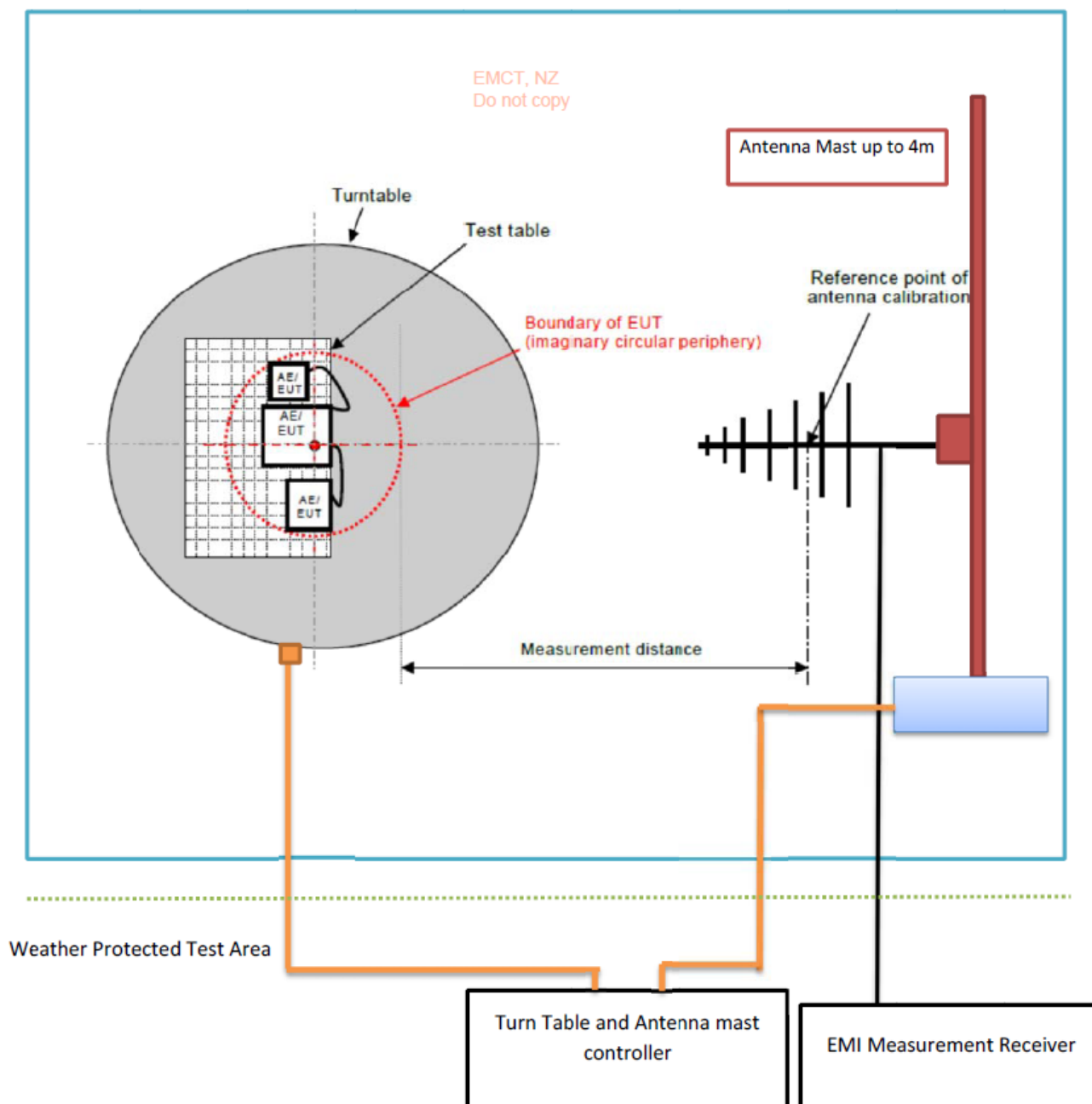


Test equipment used

EMI Receiver: Rohde & Schwarz ESHS 10
 Artificial Main Network: Rohde & Schwarz ESH2-Z5

Test Set Up Diagram

Radiated Emissions Test setup at Open area test site



Test Equipment Used

Loop Antenna;	Below 30 MHz	Measurement distance: 10 m
Bi conical Antenna;	30 MHz - 300 MHz:	Measurement distance: 3 m
Log Periodic Antenna;	300 MHz - 1000 MHz:	Measurement distance: 3 m
Horn Antenna;	Above 1000 MHz:	Measurement distance: 3 m

EMI Receiver Used: Rohde & Schwarz ESIB-40

Schwarzbeck Biconnical Antenna (30 – 300 MHz)





Schwarzbeck log periodic antenna (300 – 1000 MHz)





EMCO 3115 Horn Antenna (1 – 18 GHz)







Test shed showing a loop antenna in use.



