

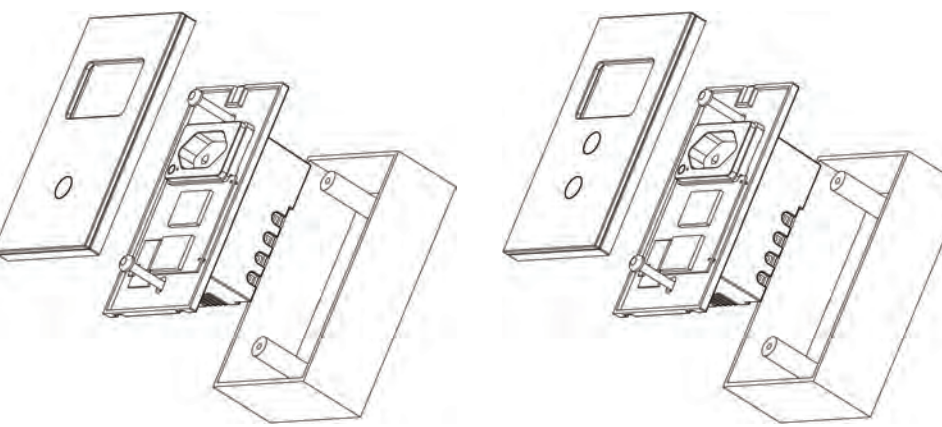
## US Switch with Socket



### Warnings:

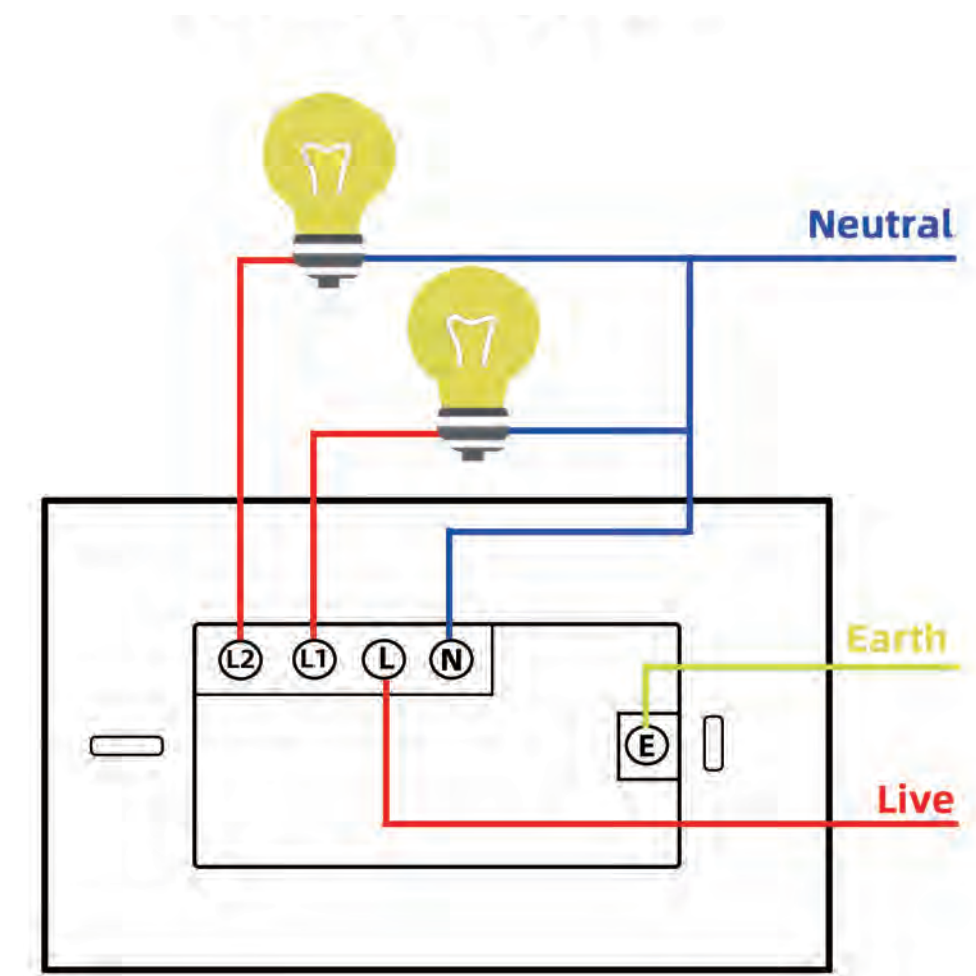
1. The product can only be paired with 2.4G WiFi router, 5G WiFi router is not accepted
2. Set the WiFi account name and password to the numbers and letters used by the family, and do not use special symbols

## Installation guide



1. Live cable connection terminal "L"
  2. Bulb cable connection terminals "L1, L2"
  3. Neutral cable connection terminal "N"
  4. Grounding cable connection terminal "E"
- (Note: Neutral cable is required)

## Cable wiring diagram



### Fix the switch to the wall

1. Put the bracket in the box on the wall
2. Install two fixing screws
3. Connect cables as required
4. Clip the equipment into the mounting bracket
5. Turn on the power and the device will start to work

### Indicator Status

1. WiFi indicator flashes quickly -->Fast distribution network mode(EZ Mode)
2. WiFi indicator flashes slowly -->AP distribution network mode(AP Mode)
3. WiFi indicator always of -->on-line/of-line



### How to download an application

Scan the QR code shown on the right, or search for Smart Life in the IOS app store or Google play store

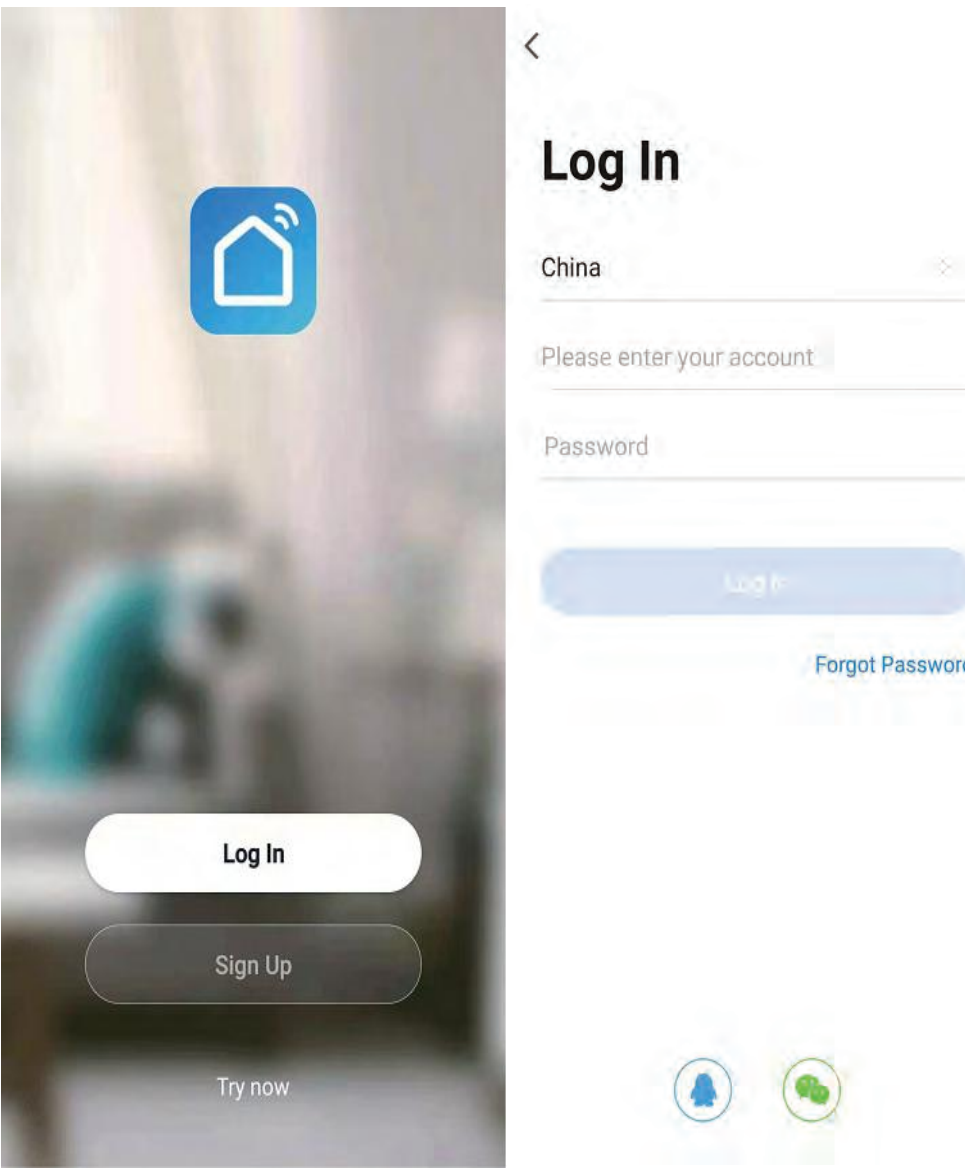
### How to login application

1. Download or scan QR code and install Smart Life Application
2. The app will ask you to register your account
3. Enter your previous phone number or email, and then select the country / region
4. Get the verification code
5. Input the verification code
6. Login with password



IOS and Android

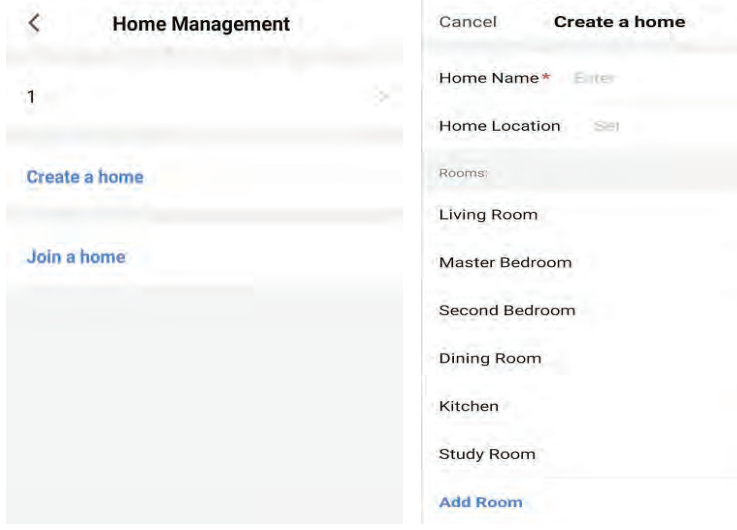
4



5

### Create a family

1. Enter the family name and select the room
2. Successful creation of family



### How to add new devices in quick connect (EZ Mode)

1. Make sure the phone is connected to WiFi network, and then turn on the power
2. press and hold any touch button for 5-8 seconds until the WiFi indicator flashes rapidly
3. Open the application, press "add device" or " + " and select "wifi switch" to add.
4. Select WiFi network, input WiFi password, and use "EZ Mode" to connect.
5. After connecting, the application will request to connect
6. Rename the device and select the room, then click Finish (Note: names must be numbers and letters, do not use special symbols)

6

### CAUTION:

Changes or modifications to this unit not expressly approved by the party responsible for compliance could void the user's authority to operate the equipment.

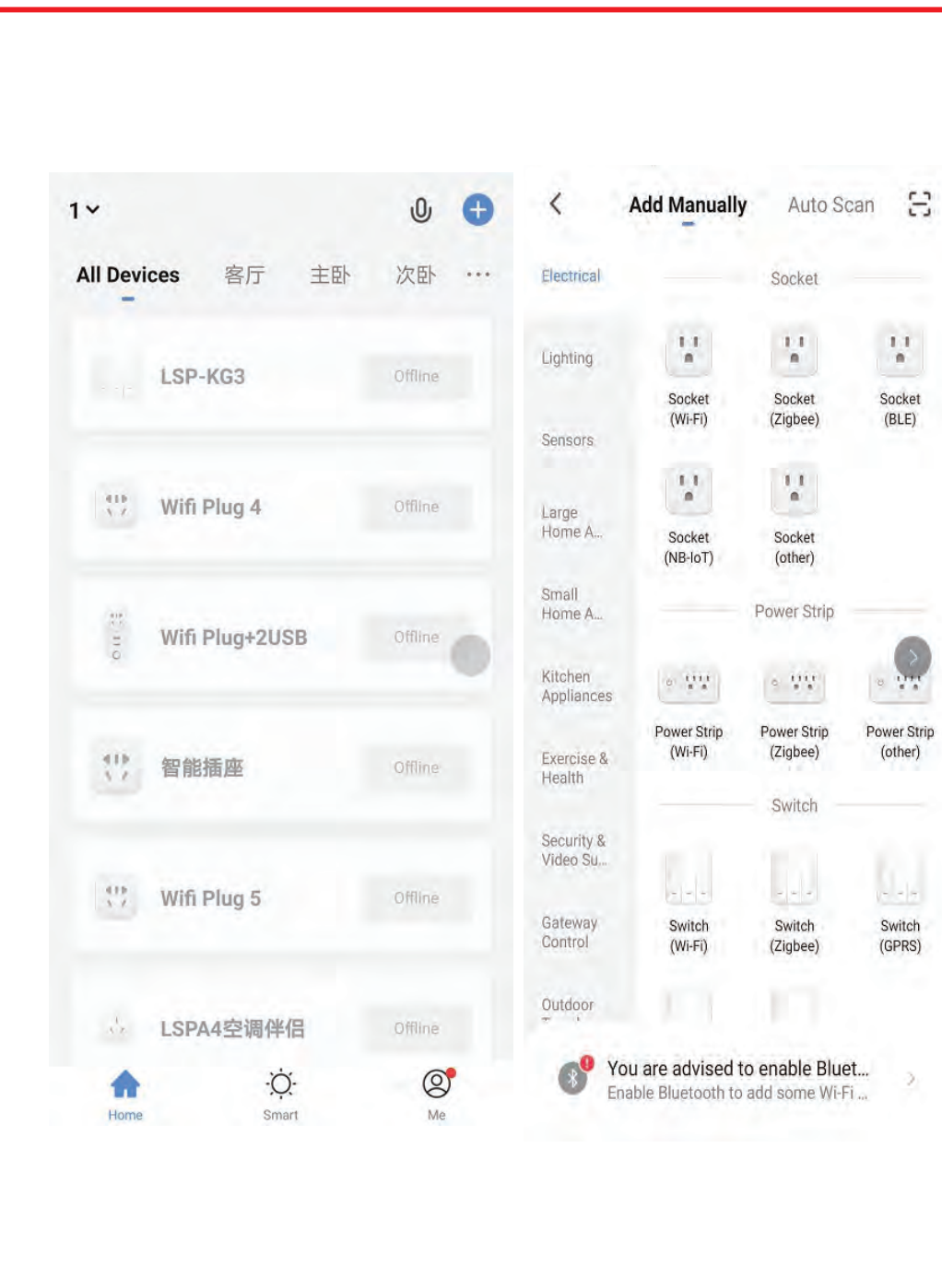
### CAUTION:

This device complies with part 15 of the FCC Rules. Operation is subject to the following two conditions:(1) This device may not cause harmful interference, and (2) this device must accept any interference received, including interference that may cause undesired operation.

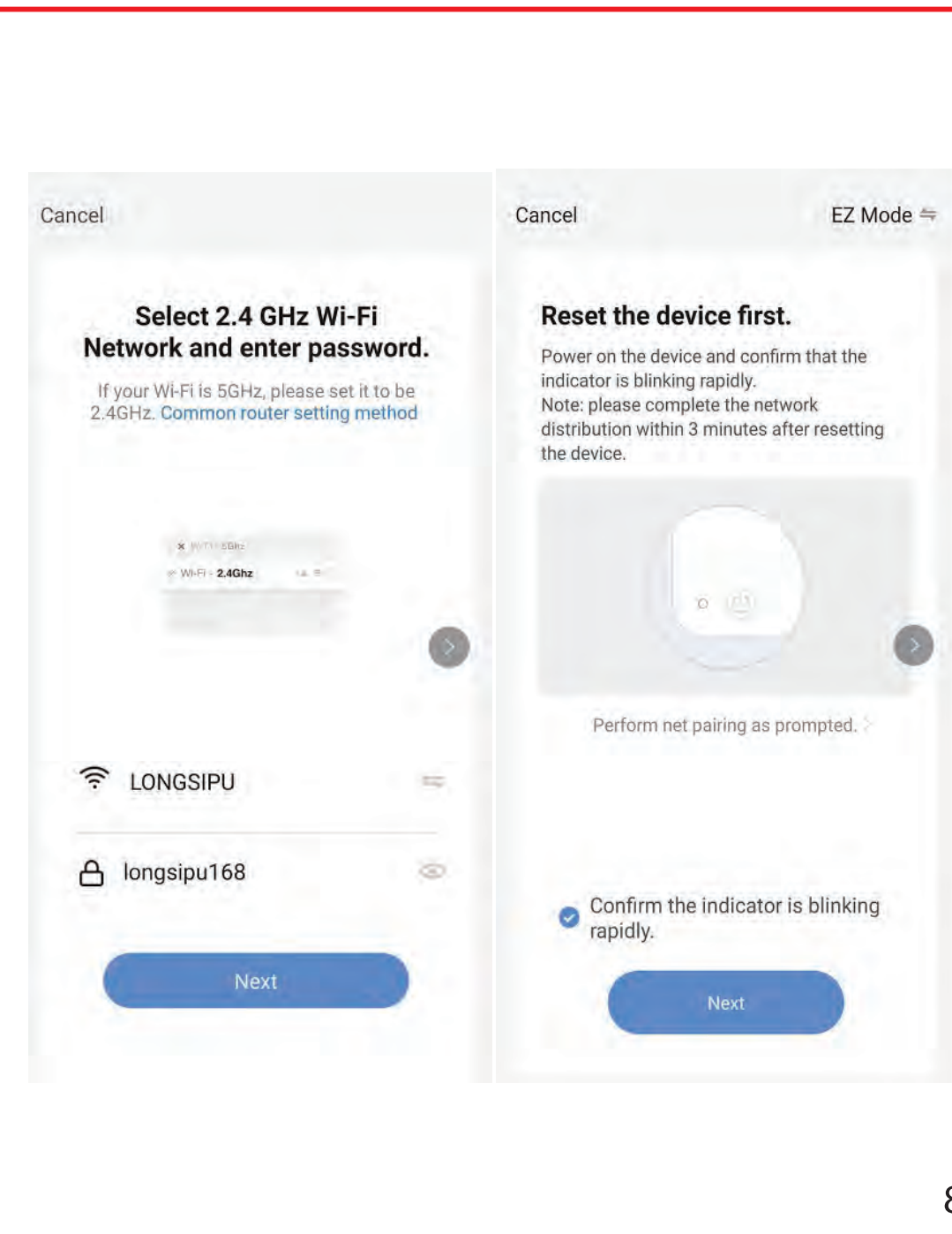
### FCC Statement:

This equipment has been tested and found to comply with the limits for a Class B digital device, pursuant to part 15 of the FCC Rules. These limits are designed to provide reasonable protection against harmful interference in a residential installation. This equipment generates, uses and can radiate radio frequency energy and, if not installed and used in accordance with the instructions, may cause harmful interference to radio communications. However, there is no guarantee that interference will not occur in a particular installation. If this equipment does cause harmful interference to radio or television reception, which can be determined by turning the equipment off and on, the user is encouraged to try to correct the interference by one or more of the following measures:  
—Reorient or relocate the receiving antenna.  
—Increase the separation between the equipment and receiver.  
—Connect the equipment into an outlet on a circuit different from that to which the receiver is connected.  
—Consult the dealer or an experienced radio/TV technician for help.

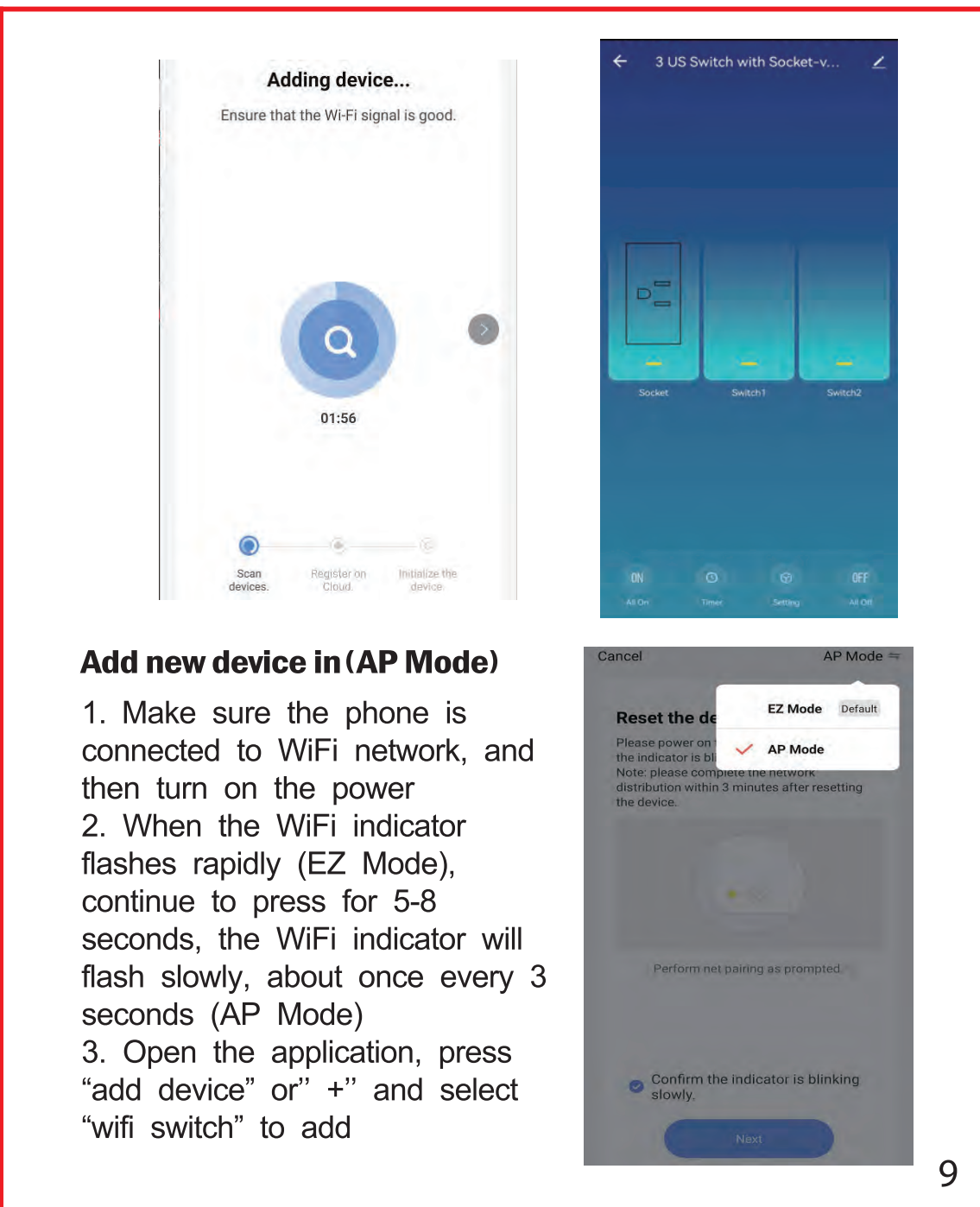




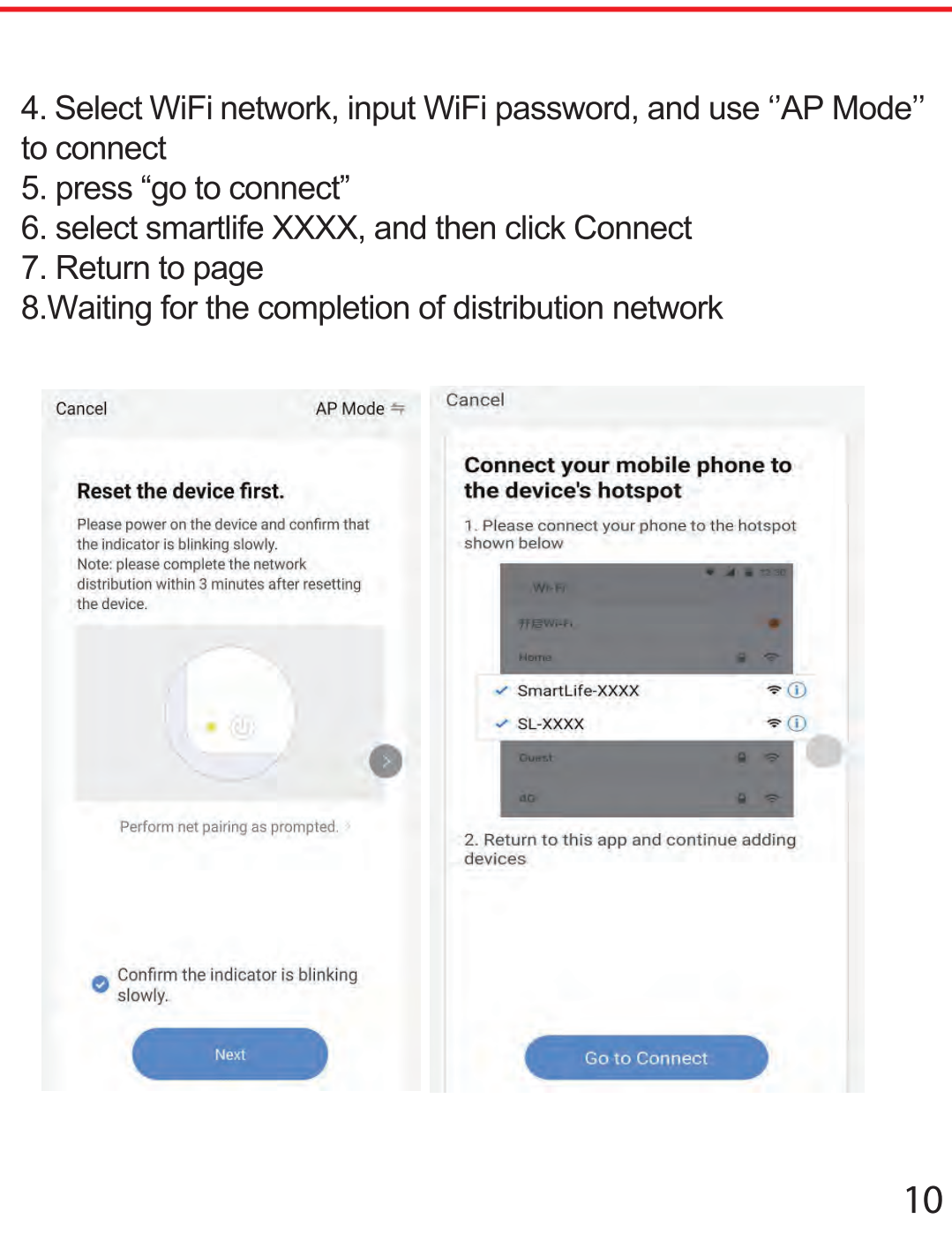
7



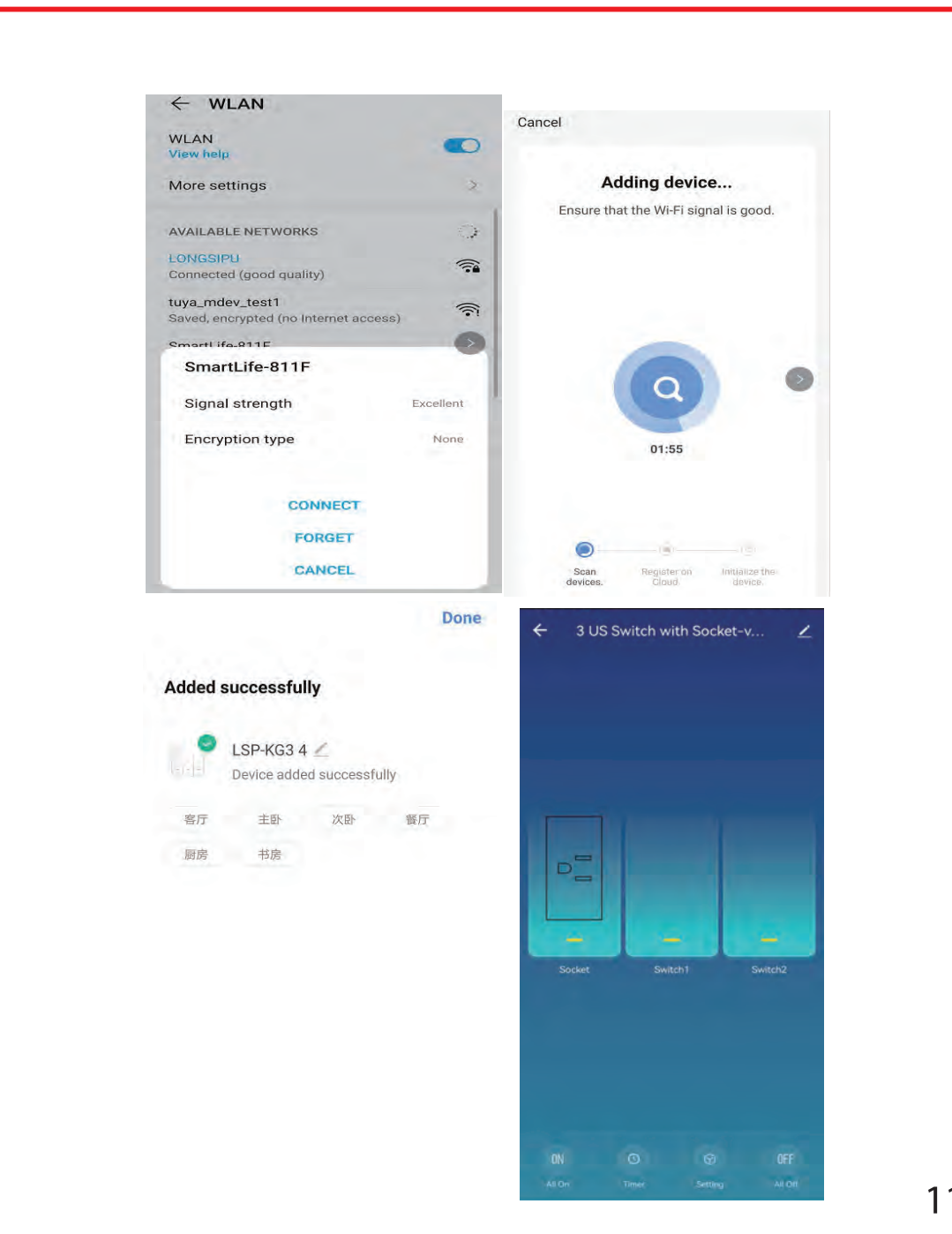
8



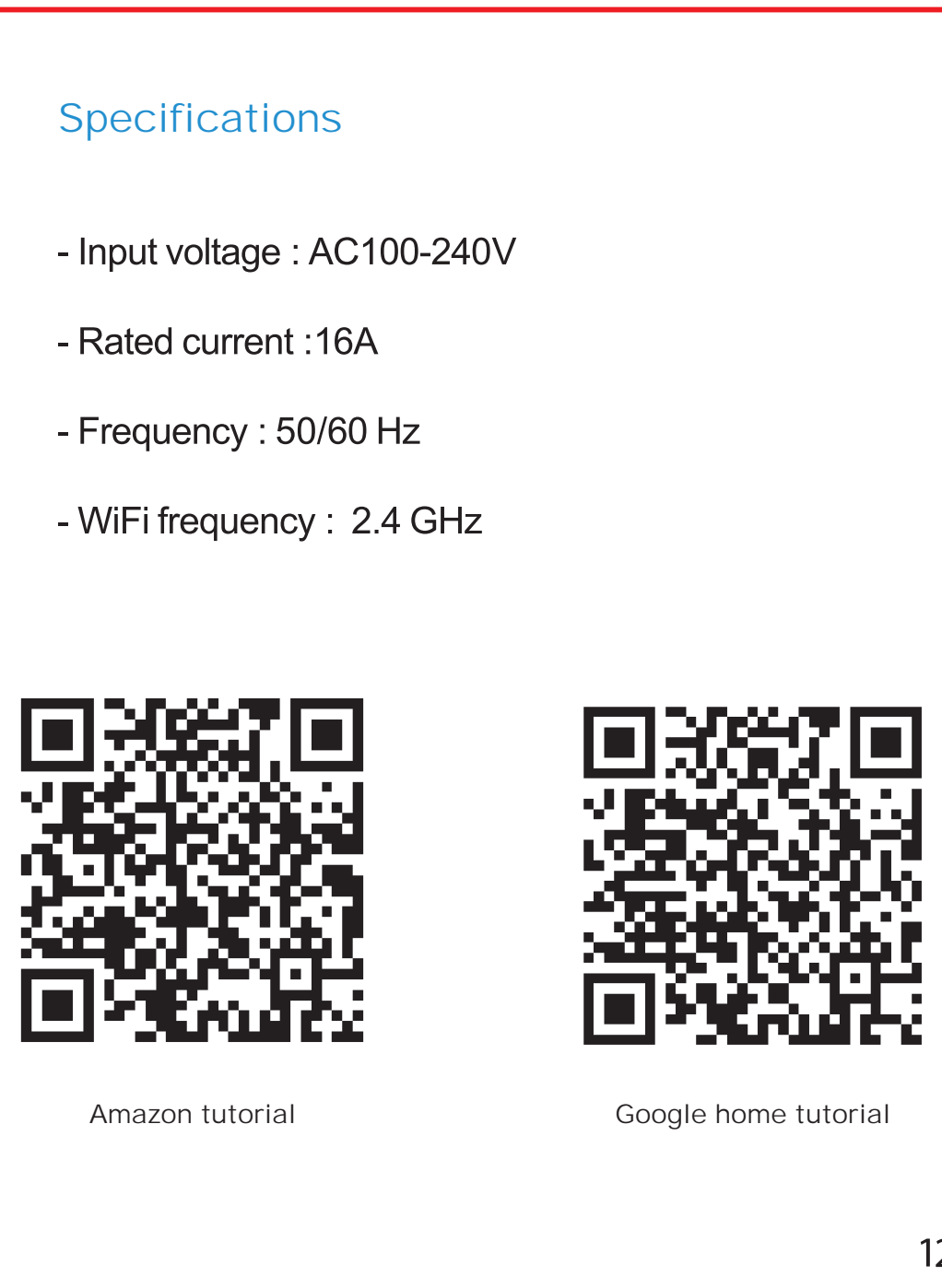
9



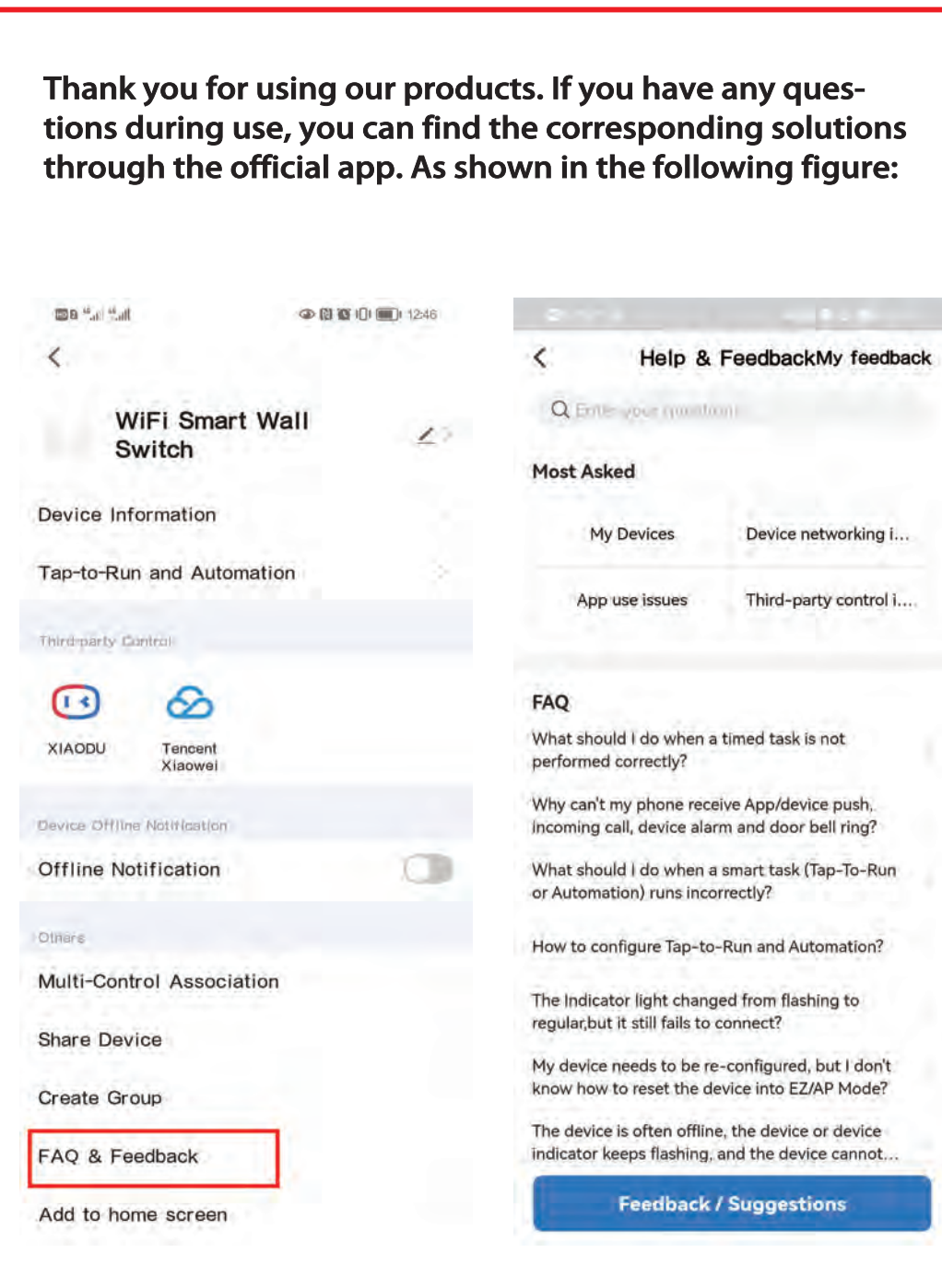
10



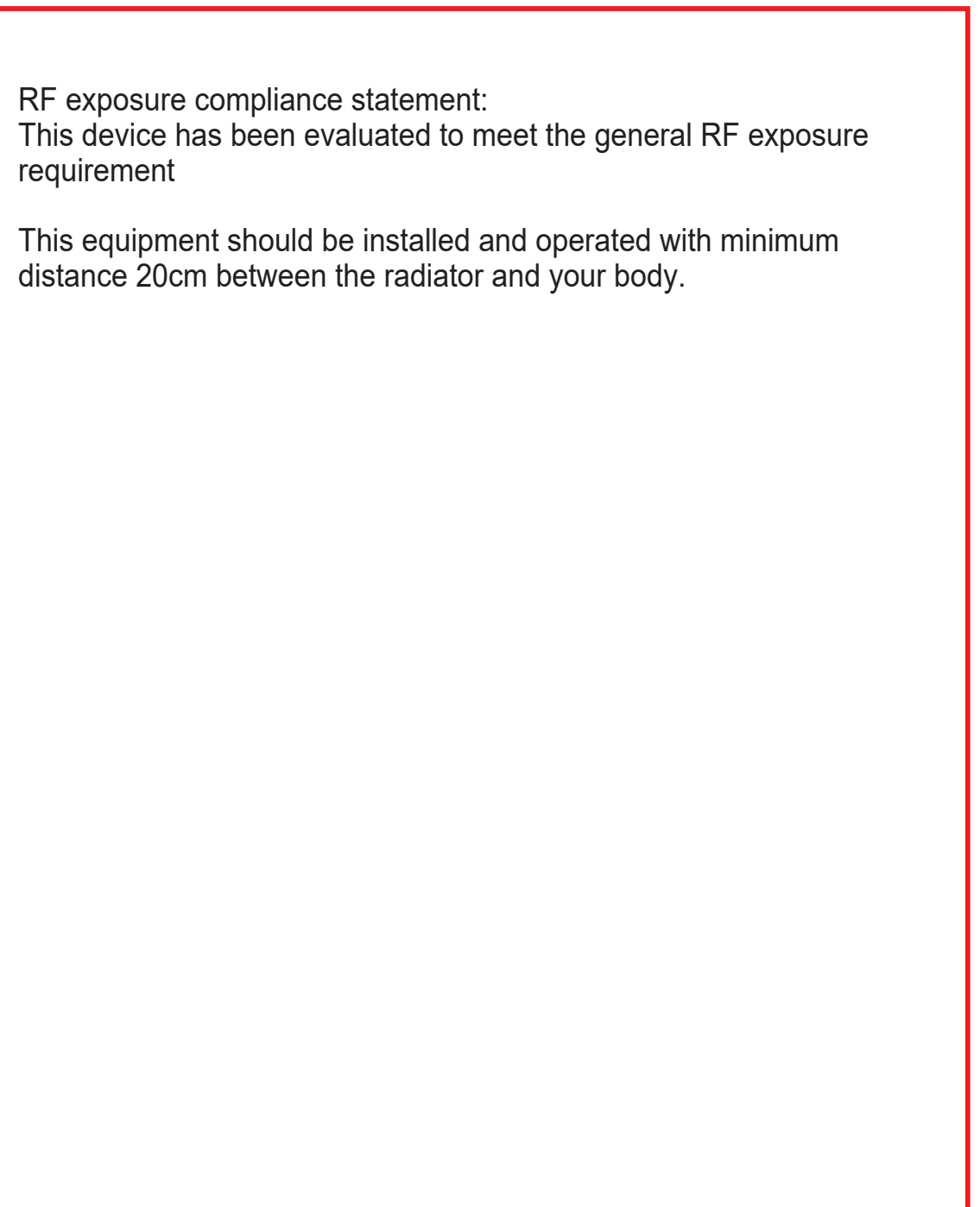
11



12



13



14