

Quick Setup Guide



Becky AI Smart Baby Monitor

Please keep it safe and read carefully before product setup

Safety



WARNING:

STRANGULATION HAZARD — Children have STRANGLED in cords.

NEVER attempt to use cord without the protective covering. Check protective covering before each use to ensure that the cord is not exposed to your child. Immediately discontinue use if protective covering is damaged or broken. This device is designed for indoor use only. This device is designed to be used behind a standard crib and against the wall only.

Use only the AC power supply included with your Becky AI. Adult assembly is required. Keep small parts away from children when assembling. This product cannot replace adult supervision. Ensure your child's health by checking him/her regularly. This product is not a toy. Do not allow children to play with it.

DISCLAIMER — Becky AI Baby Monitor was created to help parents track factors that affect their baby's sleep schedule and general wellbeing. It is not intended to cure, treat, or prevent any disease or health condition, including but not limited to Sudden Infant Death Syndrome (SIDS). No baby monitor can ever replace you as a caregiver, or substitute for asking your doctors for medical advice.

This device complies with Part 15 of the FCC Rules. Operation is subject to the following two conditions: (1) this device may not cause harmful interference, and (2) this device must accept any interference received, including interference that may cause undesired operation.

Changes or modifications not expressly approved by the party responsible for compliance could void the user's authority to operate the equipment.

NOTE: This equipment has been tested and found to

comply with the limits for a Class B digital device, pursuant to Part 15 of the FCC Rules. These limits are designed to provide reasonable protection against harmful interference in a residential installation. This equipment generates uses and can radiate radio frequency energy and, if not installed and used in accordance with the instructions, may cause harmful interference to radio communications. However, there is no guarantee that interference will not occur in a particular installation. If this equipment does cause harmful interference to radio or television reception, which can be determined by turning the equipment off and on, the user is encouraged to try to correct the interference by one or more of the following measures:

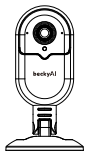
- Reorient or relocate the receiving antenna.
- Increase the separation between the equipment and receiver.
- Connect the equipment into an outlet on a circuit different from that to which the receiver is connected.
- Consult the dealer or an experienced radio/TV technician for help.

NOTE: This device and its antenna (s) must not be co-located or operation in conjunction with any other antenna or transmitter.

RF Exposure Statement

To maintain compliance with FCC's RF Exposure guidelines, This equipment should be installed and operated with minimum distance of 20cm the radiator your body. This device and its antenna (s) must not be co-located or operation in conjunction with any other antenna or transmitter.

In the Box



Baby Monitor



Buzzer×2



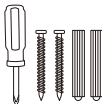
Quick Setup Guide



Power Cord



Power Supply



Screws



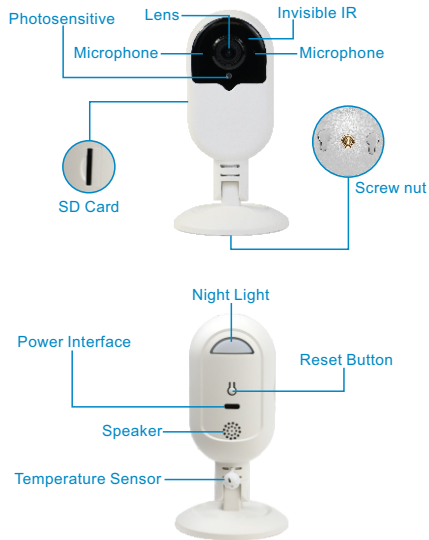
Positioning Paper



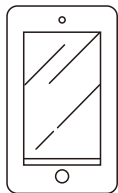
Cable Guides



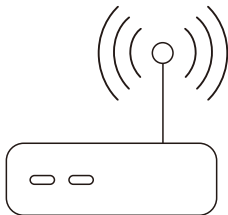
Fixed Connectors



What you'll need



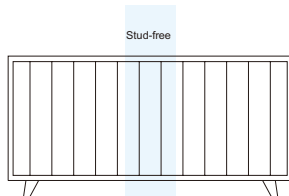
Smart Device



WiFi Internet

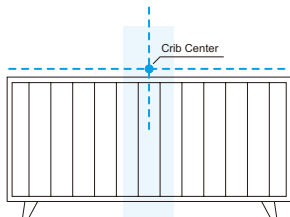
1. Position the crib against the preferred wall in the nursery.

IMPORTANT: CRIB CENTER MUST BE IN A STUD-FREE AREA OF THE WALL.

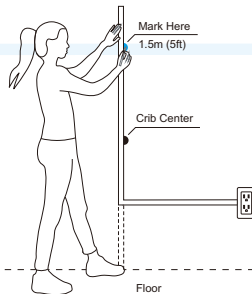


- Using the Measuring Tape, find the center of the crib and mark the wall with a pencil.

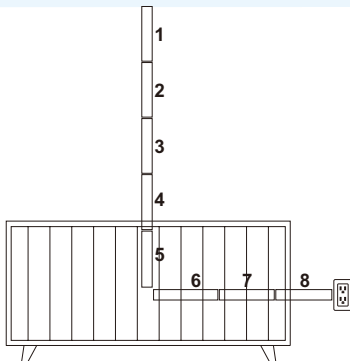
Notes: Center of crib must be within 1.8m (6ft) of an electrical outlet. Then, move the crib away from the wall.



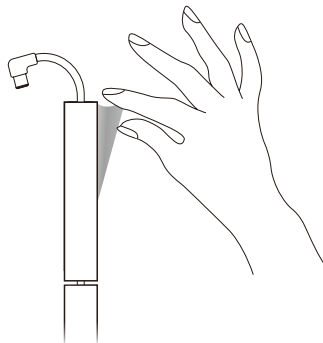
- Step on the bottom of the Measuring Tape so it aligns with the floor and your “Crib Center” mark on the wall. Lift the tape up 1.5m (5ft) and mark on the “Mark Here” indicator.



4. Calculate the actual number of tubes and then set the wires into the tubes.



5. Tear the tape from the back of the tubes and press them on the wall to fix them.

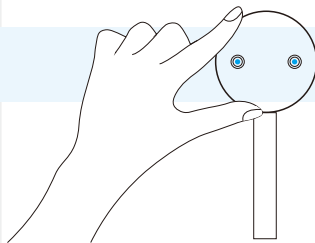


6. Connecting the tubes with fittings.



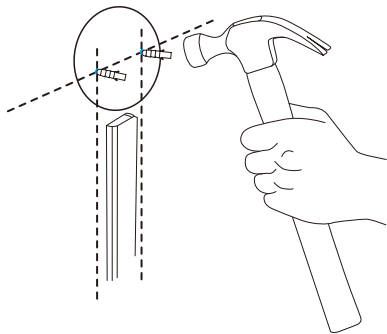
-13-

7. Attach the positioning paper to the “Mark Here” position and drill 2 holes with a drill bit.

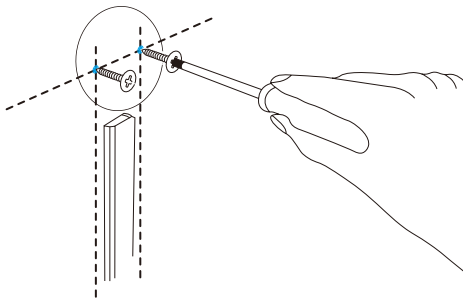


-14-

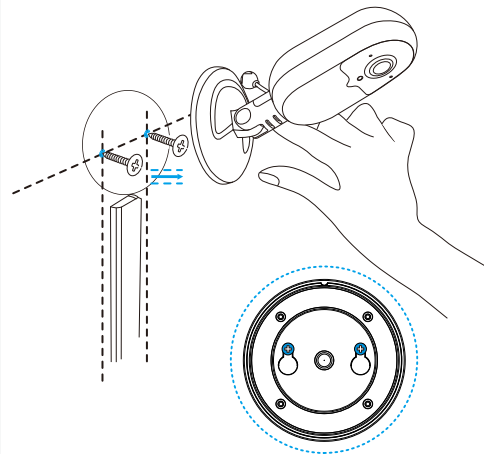
8. Use a hammer to tap the “green expansion screw” into the hole.



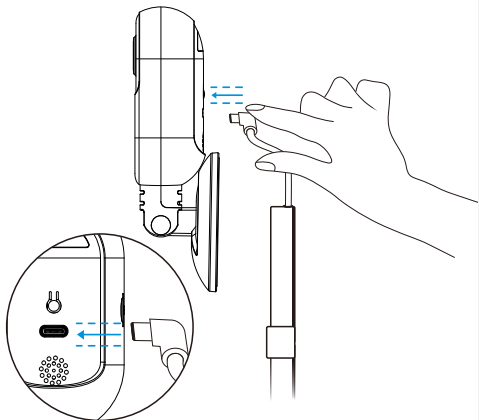
9. Thread 90% of the screw into the wall with a screwdriver.



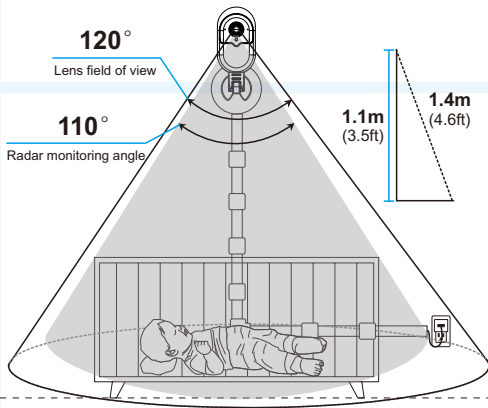
10. Hang the Becky AI device on the screws to fix.



11. Plug the Power Supply into the back of the Becky AI device.



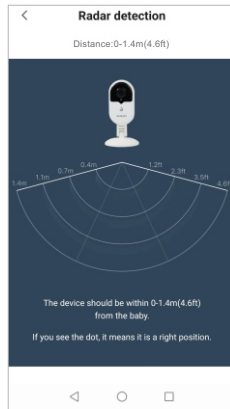
Connect the Power Cord to the Power Supply.
Plug the Power Cord into the nearest outlet. Once
the power button light turns on, you're ready to go.



Notes:

- 1.The distance between Becky AI and baby is no more than 1.4m (4.6ft).
- 2.The effective monitoring angle is horizontal 120°.

In order to ensure that the crib is fully monitored by radar, please check after adding the device to the APP.



Download APP

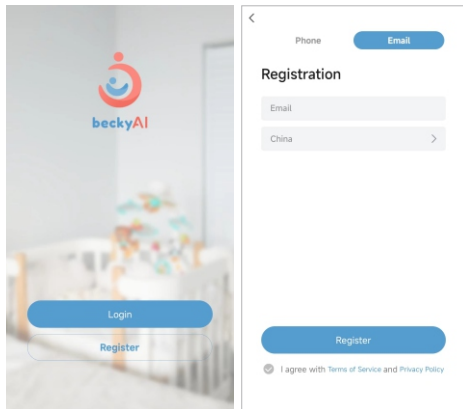
Search “Becky AI” in the App Store or scan the QR code below to download and install.



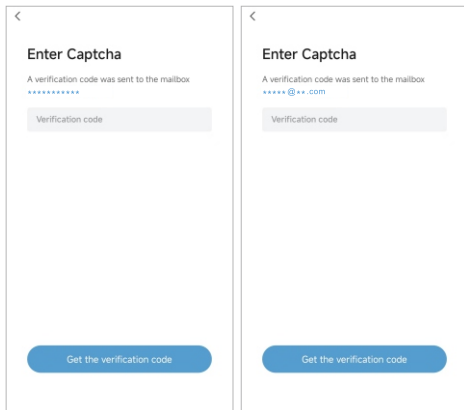
Open “Becky AI” App, click “Register” option, select the phone number or email to register.

Notes:

Power Up Your Camera : Plug in your camera and place it in the area you'd like to monitor. Make sure the area has a strong Wi-Fi signal.



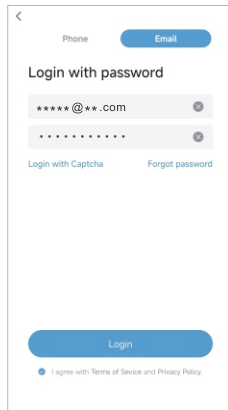
Enter your phone number or email address, then pass the verification code to finish the registration.



The image shows two side-by-side mobile app screens. Both screens have a back arrow in the top left corner. The title is "Enter Captcha". Below the title, it says "A verification code was sent to the mailbox" followed by a redacted email address "*****@***.com". There is a text input field labeled "Verification code". At the bottom, there is a blue button labeled "Get the verification code".

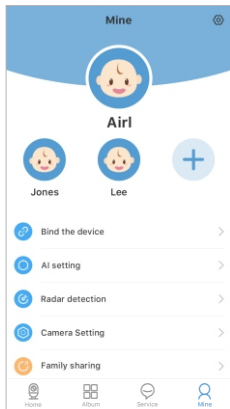
After logging into your registered account, click the "mine".

Notes : Please open the location settings of the APP, otherwise the device hotspot cannot be searched.



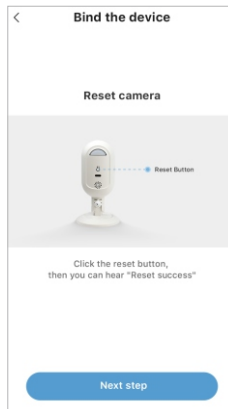
The image shows a mobile app screen for login. It has a back arrow in the top left corner. At the top, there are two buttons: "Phone" and "Email". The title is "Login with password". Below the title, there are two text input fields. The first field contains the email address "*****@***.com" and has a red "x" icon on the right. The second field contains a redacted password "*****" and also has a red "x" icon on the right. Below the input fields, there are two links: "Login with Captcha" and "Forgot password". At the bottom, there is a large blue button labeled "Login". Below the button, there is a checkbox labeled "I agree with Terms of Service and Privacy Policy.".

Click “Bind the device”, to add the device.

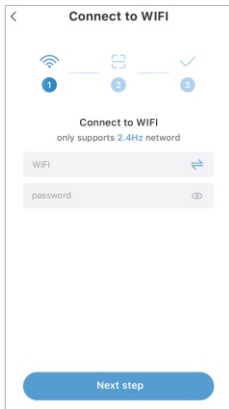


Scan QR Code

1. Press the camera reset button for 3-5 seconds, then you can hear “Reset successful”.

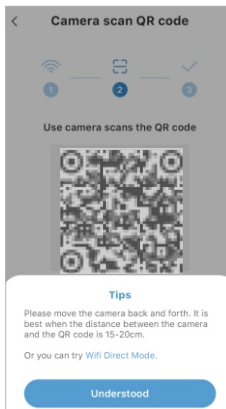


2. Select 2.4GHz network and enter the LAN password, then click the “Next Step”.

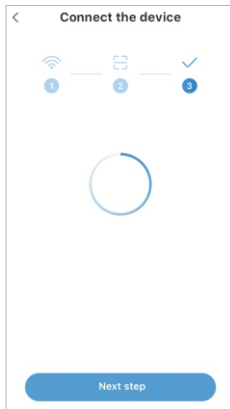


3. Place the QR code towards the camera lens.
Place it 15cm (0.49ft) to 20cm (0.7ft) from the lens.

Notes : If the device fails to scan the code, click “Wi-Fi direct Mode” to add the device (page 28 details)

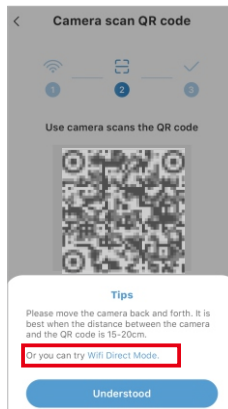


4. Finally add the device successfully.

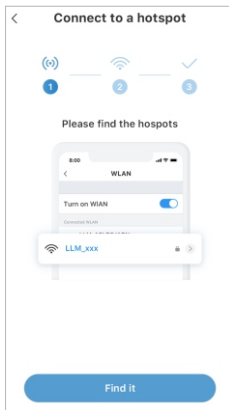


AP Connection

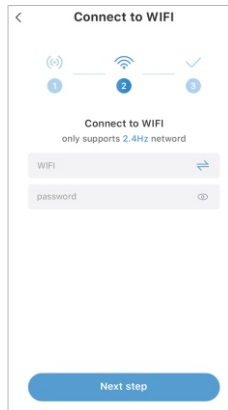
1. Click "Wi-Fi direct Mode" to connect the device in AP mode.



2. Click “Find it”, connect to the LAN of “LLM_xxx”, and then enter the password: **12345678**



3. Select 2.4GHz network and enter the LAN password, then click the “Next Step”.



4. Finally add the device successfully.

