

VIZOLINK

Wireless Battery Camera



VIZOLINK

Operation Manual

Please keep it safe and read carefully before product setup

DOWNLOAD APP

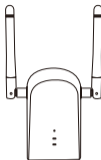
01. Search "VIZOLINK" in the app store or scan the QR code below to download and install.



App Store

Google™ play

Included in Package



Relay



Camera



Manual



Charging Cable



Network Cable



Screw Bag



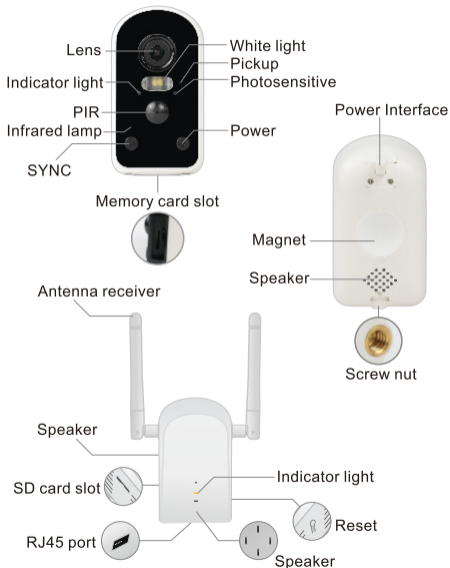
Bracket



Iron Sheet



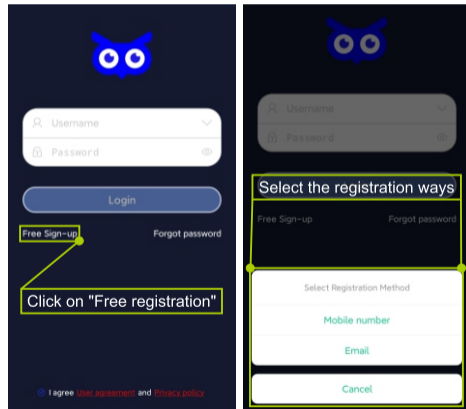
Patch



-03-

02. Open the "VIZOLINK" App icon, click "Free Registration" option and select the registration ways to register.

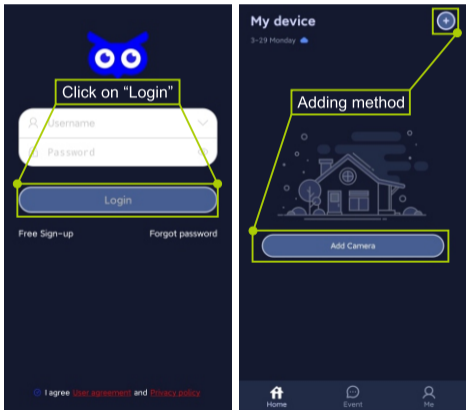
As shows in the picture:



-04-

03. Login with your registered account, click "Camera Connection" or "+" button to add a homebase, and click on "LAN add" to connect to the network

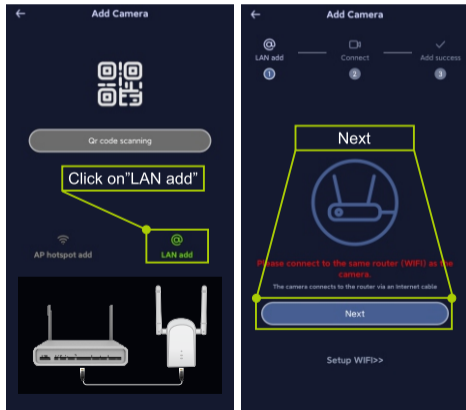
As shows in the picture:



NOTE:

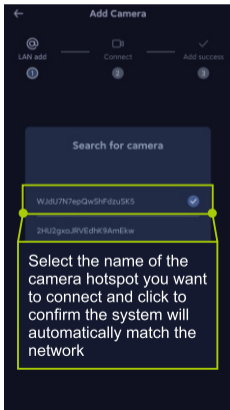
1. The relay must be connected to the network cable.
2. The smartphone and the relay are on the same LAN.

As shows in the picture:



04. Follow the voice and picture / text guidance to complete homebase connecting to the network step by step.

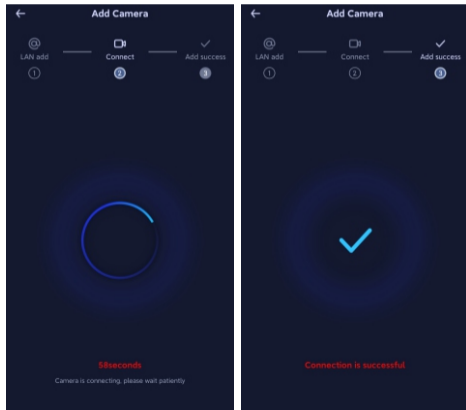
As shows in the picture:



-07-

The Android system device will search for the camera's hotspot name, and after selecting and confirming the network, it will be the pairing network status. IOS system device needs to jump to the wireless LAN interface to find the device hotspot name, and manually connect the hotspot name starting with "adh_XXX_XXX", then return to the home page.

As shows in the picture:

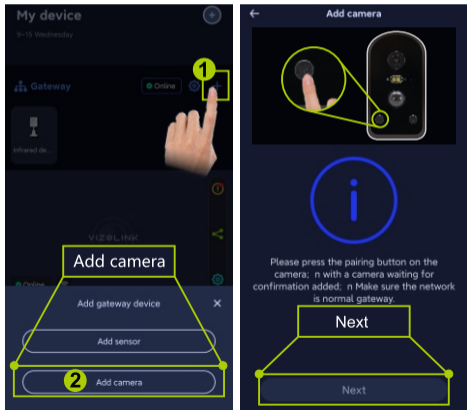


-08-

05. Add camera

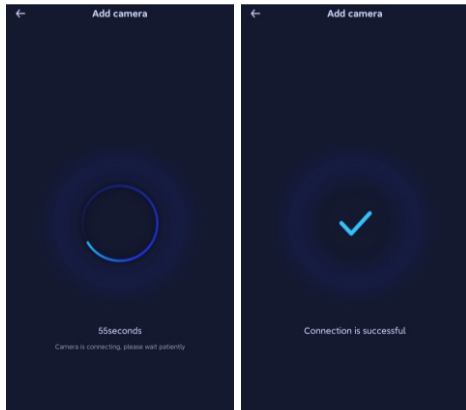
Press sync button for three seconds, you will hear the matching mode, while the green light blinks.

As shows in the picture:



Follow the page or sound prompts for step-by-step operation.

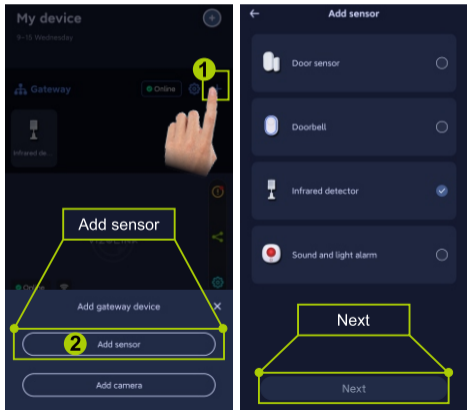
As shows in the picture:



06. Add sensor

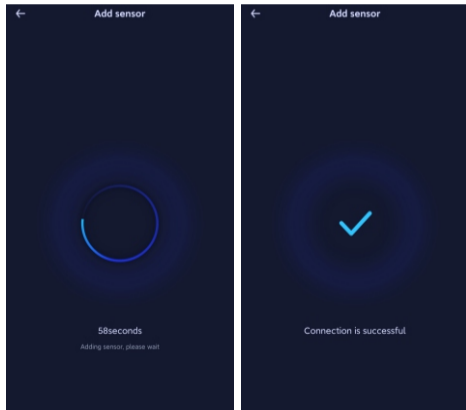
Add sensor device, keep it in operation.

As shows in the picture:



Follow the page or sound prompts for step-by-step operation.

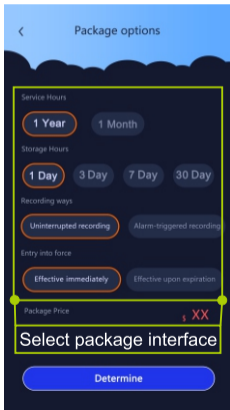
As shows in the picture:



07. Cloud Storage:

Users can view the stored video without SD card after purchasing the cloud storage.

As shows in the picture:

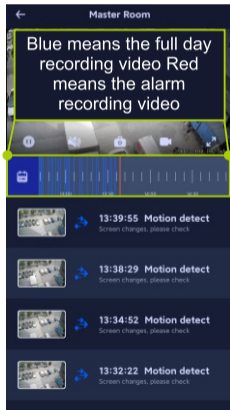


08. Playback:

Enter the camera live streaming interface, click the "Playback" button at the bottom right corner. The blue part of the timeline is for the all-day recording video, and the red part is for the event one.

Drag the timeline to watch the video of each time period, click the calendar button on the left side of the timeline, users can select the date of the video.

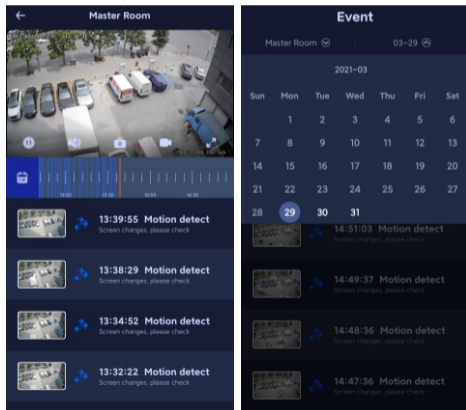
As shows in the picture:



09. Relay settings:

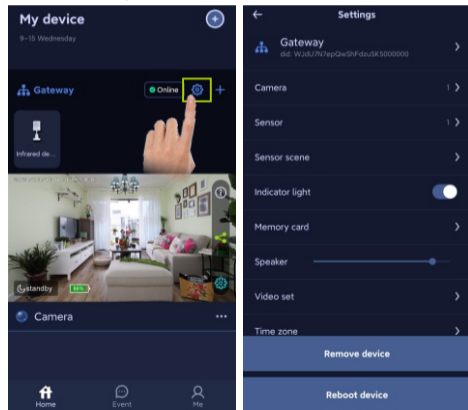
Relay basic functions switch, configuration information, firmware update and factory settings, etc.

As shows in the picture:



-15-

As shows in the picture:

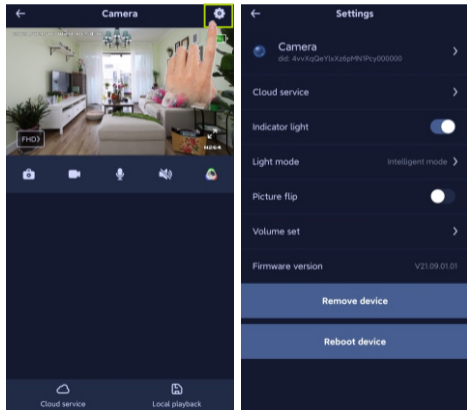


-16-

10. Camera Settings:

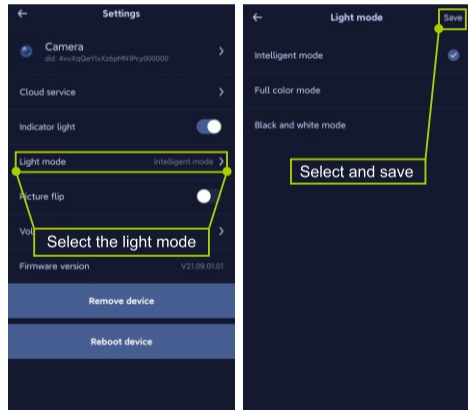
Camera basic functions switch, configuration information and factory settings, etc.

As shows in the picture:



11. Light Mode:

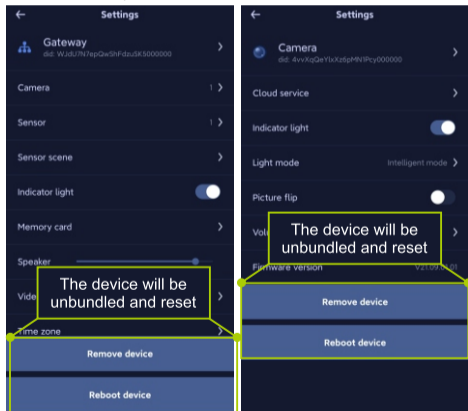
Users can setup the three options of light modes, "intelligent mode", "full color mode" and "black and white mode" (The device is in night vision under intelligent mode, and when the alarm is triggered, it will light up the device's white light).



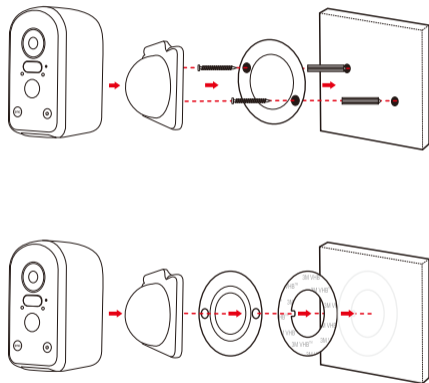
12. Device Delete:

After clicking Delete Device, the device will be restored to the factory mode.

As shows in the picture:



Mount the camera



Warning:

This device complies with Part 15 of the FCC Rules. Operation is subject to the following two conditions: (1) this device may not cause harmful interference, and (2) this device must accept any interference received, including interference that may cause undesired operation.

changes or modifications not expressly approved by the party responsible for compliance could void the user's authority to operate the equipment.

NOTE: This equipment has been tested and found to comply with the limits for a Class B digital device, pursuant to Part 15 of the FCC Rules. These limits are designed to provide reasonable protection against harmful interference in a residential installation. This equipment generates, uses and can radiate radio frequency energy and, if not installed and used in accordance with the instructions, may cause harmful interference to radio communications. However, there is no guarantee that interference will not occur in a particular installation. If this equipment does cause harmful interference to radio or television reception, which can be determined by turning the equipment off and on, the user is encouraged to try to correct the interference by one or more of the following measures:

- Reorient or relocate the receiving antenna.
- Increase the separation between the equipment and receiver.
- Connect the equipment into an outlet on a circuit different from that to which the receiver is connected.
- Consult the dealer or an experienced radio/TV technician for help.

NOTE: This device and its antenna(s) must not be co-located or operation in conjunction with any other antenna or transmitter

RF Exposure Statement

To maintain compliance with FCC's RF Exposure guidelines, This equipment should be installed and operated with minimum distance of 20cm the radiator your body. This device and its antenna(s) must not be co-located or operation in conjunction with any other antenna or transmitter