

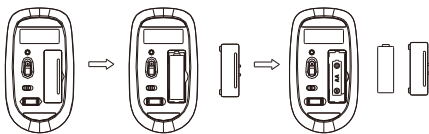
Installing the Batteries

The RF2.4GHz Optical mouse use one AA alkaline batteries.

The RF2.4GHz Optical keyboard use one AAA alkaline batteries.

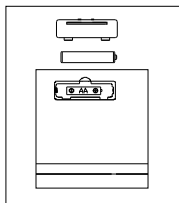
Installing Batteries in the Mouse

- Step 1. Open the battery compartment
- Step 2. Insert the batteries as shown inside the battery compartment
- Step 3. Replace the cover



Install the batteries in the keyboard

- Step1: Remove the battery compartment cover on the bottom of the keyboard by squeezing the cover in from the tab to release it
- Step2: Insert the batteries as shown inside the battery compartment
- Step3: Replace the cover

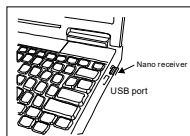


Connecting the Receiver

The receiver is insert to USB port immediate, or by a extra USB cable.



USB Port



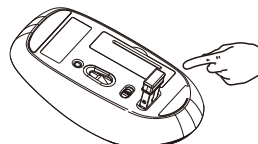
Connect the USB plug to USB port of your computer

Multimedia Hotkeys functions:

FN+ESC=Media Player	FN+F7=Web home
FN+F1=Play/Pause	FN+F8=Search
FN+F2=Previous Track	FN+F9=My Favorite
FN+F3=Next Track	FN+F10=Email
FN+F4=Volume Up	FN+F11=Screen lock
FN+F5=Volume Down	FN+F12=My computer
FN+F6=Mute	

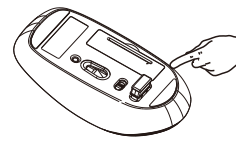
Obtain the receiver on the mouse

- 1.If you want to use the mouse,pls take out the receiver (shown in picture ①) and connect it to computer;
- 2.If you want to stop using the mouse, pls store the receiver onto the mouse (shown in picture ②)



①

Take out the receiver



②

Store the receiver

Restoring factory default settings

Mouse:

When the enduser finds the wireless mouse doesn't work, please check:

1. Whether the battery is used out, if yes, please replace with new battery;
2. If the led on mouse bottom is off, please do the following steps to recovery the default setting (automatic pairing):

Step one: unplug and plug again the nano receiver onto an available USB port of computer,

Step two: make the wireless mouse close to the nano receiver (within 10 cm), take out the battery and install the battery again inside the Battery compartment, if we find the Led on the mouse bottom on, we can start using the wireless mouse again.

Power-Save function:

1. Without using the mouse for 1 minute, the mouse will go into sleep mode level1. You can move it to wake up the mouse. The Red LED is still on.
2. Without using the mouse for 1-8 minutes, the mouse will go into sleep mode level 2. You can move it to wake up the mouse. The Red LED keep flashing.
3. Without using the mouse for more than 8 minutes, the mouse will go into deep sleep mode. The LED turn off automatically.

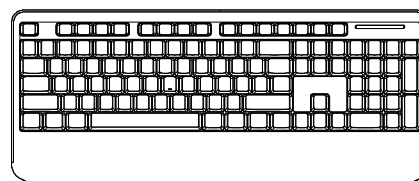
State of standby and wake up the mouse

Without any clicks or scroll movement for 8 minutes, the mouse will go into standby mode. Click any button or scroll the wheel to wake up the mouse. Under this economize mode, the optical Red LED will turn of automatically and the mouse won't respond by moving it.

Model:WKM-33

Instruction Manual

RF2.4GHz Auto-Link Keyboard & Optical Mouse



CAUTION: To use this device properly, please read the user's guide before installation.

FCC STATEMENT :

This device complies with Part 15 of the FCC Rules. Operation is subject to the following two conditions:

- (1) This device may not cause harmful interference, and
- (2) This device must accept any interference received, including interference that may cause undesired operation.

Warning: Changes or modifications not expressly approved by the party responsible for compliance could void the user's authority to operate the equipment.

NOTE: This equipment has been tested and found to comply with the limits for a Class B digital device, pursuant to Part 15 of the FCC Rules. These limits are designed to provide reasonable protection against harmful interference in a residential installation. This equipment generates uses and can radiate radio frequency energy and, if not installed and used in accordance with the instructions, may cause harmful interference to radio communications. However, there is no guarantee that interference will not occur in a particular installation. If this equipment does cause harmful interference to radio or television reception, which can be determined by turning the equipment off and on, the user is encouraged to try to correct the interference by one or more of the following measures:

- Reorient or relocate the receiving antenna.

- Increase the separation between the equipment and receiver.

- Connect the equipment into an outlet on a circuit different from that to which the receiver is connected.

- Consult the dealer or an experienced radio/TV technician for help.