

A close-up photograph of a black handgun in a black holster, mounted on a light-colored wooden cabinet. The cabinet is part of a larger unit, with a white sink and a white cup visible in the background. The lighting is soft and natural, highlighting the wood grain and the texture of the holster.

ReachTM

USER GUIDE

VARA
SAFETY

Table of Contents

What is included	
Set up	
Lock	
Unlock	
Adding new fingerprint	
Battery	
Soft reset	
Mounting	
Holster Insert.....	
Mechanical key	
Troubleshooting.....	
General maintance.....	

What is Included?

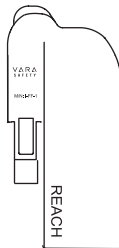
2X

Keys



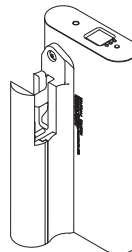
1X

Holster Insert



1X

Reach Unit



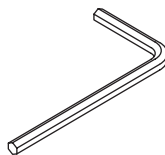
1X

User guide



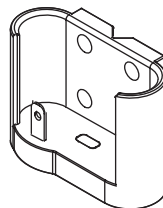
1X

Allen wrench



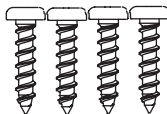
1X

Charging mount



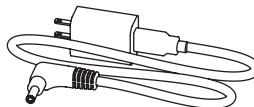
4X

Screws



1X

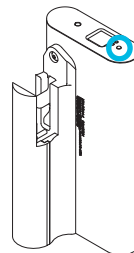
Charging cable



Set up - Biometric

- A** Press the white button to start fingerprint registration process

Note: If you already registered your master RFID, you must unlock Reach first with your tag and then press the white button within 5 seconds, to enter the master RFID registration process



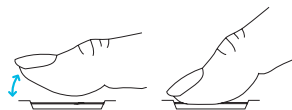
Unit turns on and the top lights all turn red

- B** Place finger onto the fingerprint sensor

One of the red lights will turn green



Lift finger and repeat until all lights turn green
(3 times in total)



- C** You have now registered the “master” fingerprint

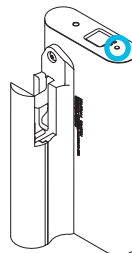


Set up - RFID

- A** Press the white button to start RFID registration process

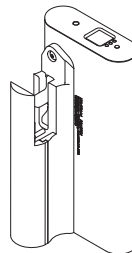
Note: If you already registered your master fingerprint, you must unlock Reach first with your fingerprint and then press the white button within 5 seconds, to enter the master RFID registration process

Unit turns on and the top lights all turn red



- B** Place your RFID bracelet onto the top of the RFID sensor like shown

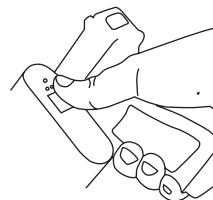
All lights will turn green to indicate the RFID has been successfully added



- C** You have now registered the “master” RFID bracelet

Lock

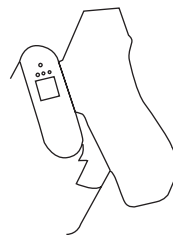
- A** Place the gun into the holster and push down from the handle. The gun will go down and lock into place



- B** A single red light will appear for X seconds to indicate that the gun has been locked then go out.



- C** Pull on the handle to confirm that the gun is properly secure

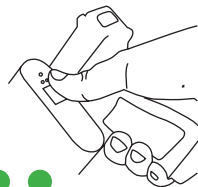


Unlock (Biometric/RFID)

Biometric

A

Place your registered fingerprint on the sensor to unlock



Lights will turn green to indicate an unlock



Lights will flash red to indicate incorrect fingerprint



B

RFID

Tap your RFID bracelet onto the top of the RFID sensor to unlock

Lights will turn green to indicate an unlock

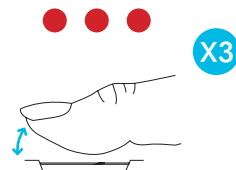
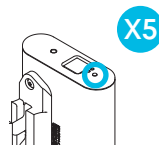
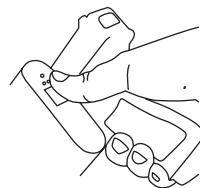


Lights will flash red to indicate incorrect RFID



Adding New Fingerprints

- A** Unlock Reach with the master fingerprint
- B** Press the white button within 5 seconds of unlocking
This timeout that prevents someone from adding a fingerprint when Reach is left unlocked
- C** Reach will enter fingerprint registration mode.
The lights will all turn red.
Place new finger onto sensor 3 times
- D** Once all 3 lights are green, the fingerprint has been successfully added



Adding new RFID bracelets/tags

- A** Unlock Reach with the master RFID bracelet
- B** Press the white button within 5 seconds of unlocking
This timeout that prevents someone from adding a fingerprint when Reach is left unlocked

- C** Reach will enter RFID registration mode. The lights will all turn red.



Place new RFID bracelet or tag onto RFID sensor
Once all lights turn green, the RFID has been successfully added



Battery life

- A** When you plug Reach into power using the charging mount,
A blue light will glow to show a successful connection to power
has been made
- B** To check on the battery life
Press the white button
The blue lights will indicate how much power Reach has
(1 blue light = X%, 2 blue lights = X%, 3 blue lights = X%)
- C** Checking battery life (while charging)
Press the white button
(Explain the UI process here for this)

Soft Reset

A

If Reach has any software issues, you can do a “soft” reset
Hold the white button for X seconds
Lights will cycle

B

*A soft reset will still retain all registered fingerprints and RFID bracelets

Mounting Reach

(insert instructions on charging mount, etc)

Drilling/bolting the mount

Bottom clearance

Charging cable

Putting Reach into mount

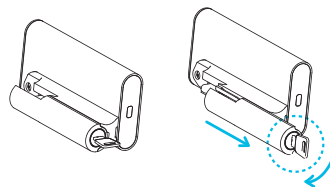
Using keys to remove slide

Tightening screw with allen key

Putting the slide back

Changing out the holster insert

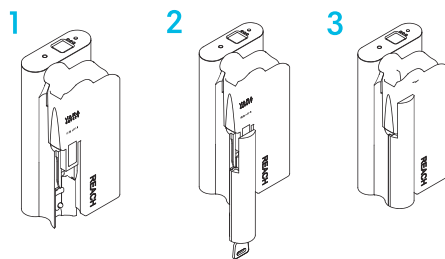
- A** Insert the key into the slot at the bottom of the Reach holstersafe. Turn clockwise and remove the slide by pulling down.



- B** Place the holster insert into the main housing as shown. (The brass locking cam should go into the top hole)



- C** Reassemble the slide by lining it up on the rail and sliding upwards until locked. (Tip: turning the key while pushing the slide back up makes it easier)



Mechanical Key Override

If Reach has any software issues, you can do a “soft” reset

Hold the white button for X seconds

Lights will cycle

*A soft reset will still retain all registered fingerprints and RFID bracelets

Troubleshooting

(insert answers to common issues)

Hard reset

Support email

Firearm safety

The Reach® biometric safe or any other firearm storage device cannot take the place of other safety procedures including teaching children of the dangers of firearms.

The manufacturers and distributors of the Reach® safe do not recommend, suggest, advise, promote, or otherwise condone the ownership or use of firearms. Vara Safety believes the decision to own or use a firearm is a serious decision that should only be made by an adult who has carefully considered the risks and benefits of such a decision.

The Reach® biometric sensor is electronic. It has a certain feel to it and may seem different to different people. It is important for you to become accustomed to securing and releasing your firearm.

It is important to periodically clean the biometric sensor of dust, dirt, oils, etc. as you would with any other electronic device to ensure quickest access to your firearm. The Reach® safe is NOT waterproof. ALWAYS make sure your firearm is secured in the Reach® unit by noticing that the first LED is red, and by tugging on the firearm after every time you lock it.

Make sure you are using the proper holster insert for your firearm model. NEVER store a firearm in the Reach® safe with an incompatible holster insert.

Do NOT store a loaded firearm in the Reach® safe.

Do NOT mix alcohol or drug use with firearms or the Reach® safe.

Always remember to practice firearm safety basics: Assume all firearms are always loaded and ready to fire; Make sure the firearm safety is on; Never let the muzzle cover anything you are not willing to destroy; Keep your finger off the trigger until your sights are on the target; Identify your target, and what is behind it. In order to experience the maximum security benefits of Reach®, it MUST be mounted securely by following the written and video instructions. The use of Reach® without proper mounting compromises the safety and security which Vara Safety has built into the product.

Tips and Advice

Safety Disclaimers

Visit varasafety.com/linkhere for videos

Product features (callouts and parts)

Mounting template

Product Specs

Warranty and Returns Policy

