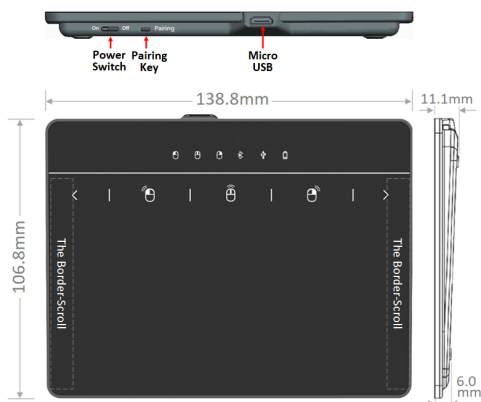


PL-703

Windows Precision Touchpad

User Manual



- . This device supports Windows 10, 7
- . It is not recommended for Windows 8.x

About this product

This product supports Windows 10 and Windows 7 systems, is a Windows precision touchpad device, and integrates all features of the mouse and touchpad, allows user to operate the mouse and the touchpad functions at same time, it is a revolutionary touchpad device.

Features

- . Provides Bluetooth (BLE V5.0) and USB interfaces
- . The USB supports Windows 10 and Windows 7
- . The Bluetooth supports Microsoft Windows 10 only
- . Supports all features of mouse buttons
- . Provides all of mouse button indicators
- . After charging completed, it can work up to 20 days
- . Supports the battery-status indicators
- . Supports the touchpad settings in Windows 10
- . Supports the gesture function settings in Windows 10
- . Supports the cursor-speed settings in Windows 10
- . Supports the scrolling-speed settings in Windows 10
- . Supports the border-wheel scrolling features
- . 5 ~ 10 meters of wireless connection distance

Indicators

- Mouse Buttons indicator
- Bluetooth and USB indicators
- Battery-Status indicator

Touch-Key for Mouse Function

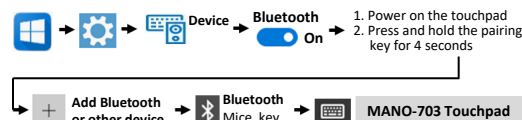


Connect to a computer

When the touchpad power is off, the USB interface can be used for connecting to a Windows 10 or 7 computer

When the touchpad power is on, the Bluetooth interface can be used for connecting to a Windows 10 computer

Follow below steps to connect the touchpad to a Windows 10 computer via Bluetooth :



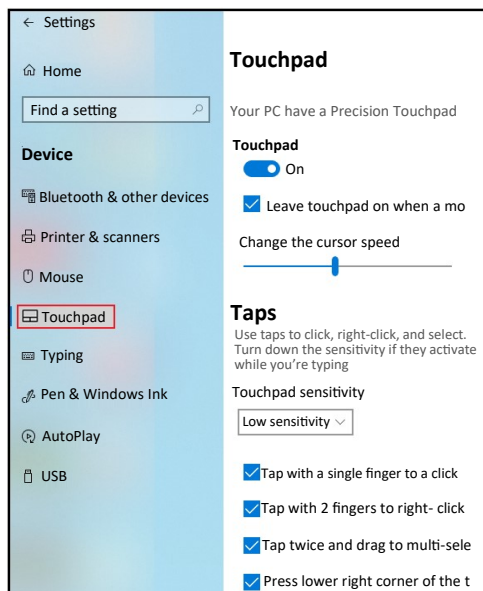
Operations

- .The touch-keys are for operating the mouse button functions
- .Touch-key can only be operated by 1-finger click
- .When the cursor or gesture is operating, the touch-key will be disabled automatically
- .When using click or gesture operation, all mouse button will auto return to release state
- .Clicking a button touch-key repeatedly will change the button to press or release state
- .When touchpad is connected to a Windows 10 computer via Bluetooth, the Bluetooth indicator lights up
- .When touchpad is connected to a Windows computer via USB, the USB indicator lights up
- .When the touchpad is idle for 15 seconds, all of mouse button will return to release state
- .When using Bluetooth connection, the touchpad will go into power-saving mode after 15 minutes of idle
- .Sliding your finger on the touchpad to wake the touchpad up
- .When the battery power is low, the power indicator will flash a red light
- .When the battery power is too low, the touchpad shuts down

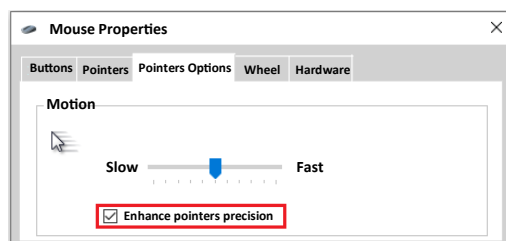
The first time you use this touchpad, it is recommended for you to go to the Windows 10 touchpad settings page to learn the default gesture functions and instructions. In this settings page, you can change the cursor speed to match your operating habits. About others feature settings please refer to the touchpad settings page.

Touchpad Setting Page

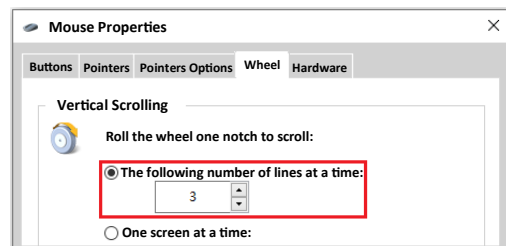
Follow below steps to launch the touchpad settings page.



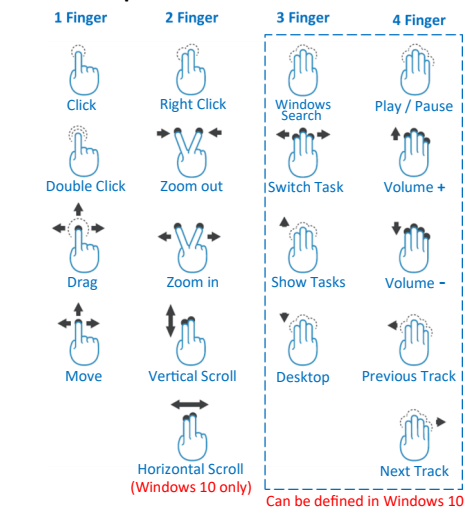
Follow below steps to select the touchpad's pointer accuracy



Follow below steps to adjust the touchpad's wheel-speed



Gesture Operations



- Click
- 2 of consecutive clicks
- Click, then put finger down and hold
- Continuous moving directions
- Put fingers down, then quick slide, then fingers up

Federal Communication Commission Interference Statement

This equipment has been tested and found to comply with the limits for a Class B digital device, pursuant to Part 15 of the FCC Rules. These limits are designed to provide reasonable protection against harmful interference in a residential installation.

This equipment generates uses and can radiate radio frequency energy and, if not installed and used in accordance with the instructions, may cause harmful interference to radio communications. However, there is no guarantee that interference will not occur in a particular installation. If this equipment does cause harmful interference to radio or television reception, which can be determined by turning the equipment off and on, the user is encouraged to try to correct the interference by one of the following measures:

- . Reorient or relocate the receiving antenna.
- . Increase the separation between the equipment and receiver.
- . Connect the equipment into an outlet on a circuit different from that to which the receiver is connected.
- . Consult the dealer or an experienced radio/TV technician for help.

FCC Caution: To assure continued compliance, any changes or modifications not expressly approved by the party responsible for compliance could void the user's authority to operate this equipment. (Example - use only shielded interface cables when connecting to computer or peripheral devices).

FCC Radiation Exposure Statement

This equipment complies with FCC RF radiation exposure limits set forth for an uncontrolled environment. This equipment should be installed and operated with a minimum distance of 0.5 centimeters between the radiator and your body.

This transmitter must not be co-located or operating in conjunction with any other antenna or transmitter. The antennas used for this transmitter must be installed to provide a separation distance of at least 0.5 cm from all persons and must not be co-located or operating in conjunction with any other antenna or transmitter.

This device complies with Part 15 of the FCC Rules. Operation is subject to the following two conditions:

- (1) This device may not cause harmful interference, and
- (2) This device must accept any interference received, including interference that may cause undesired operation.