



Bluetooth 5.0

TRUE WIRELESS EARBUDS



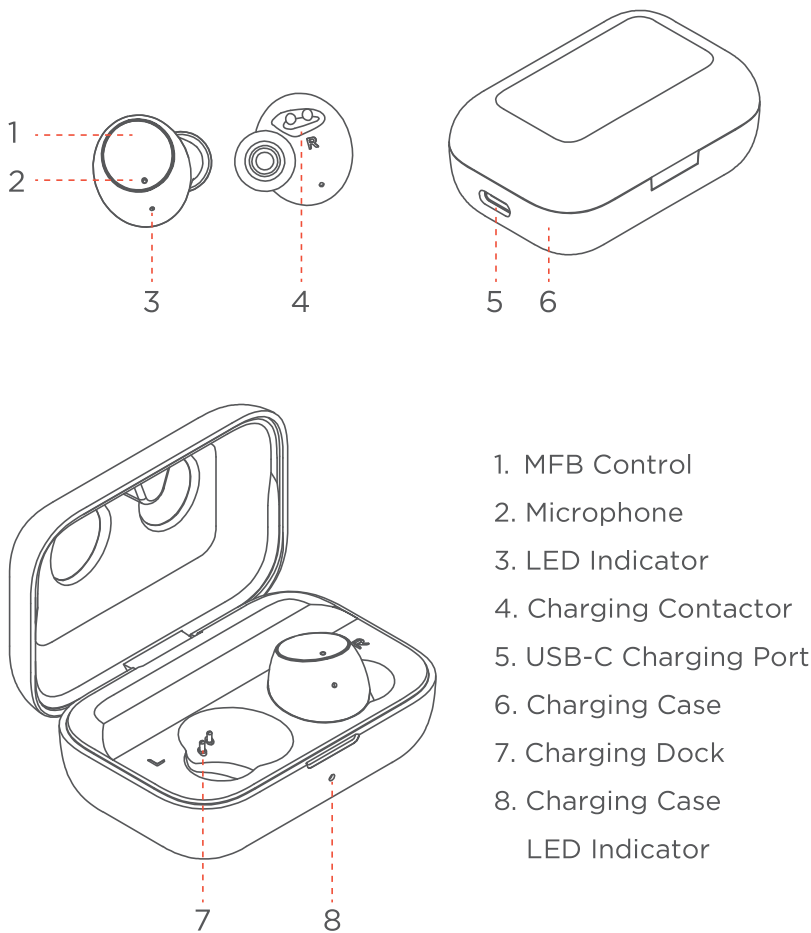
USER MANUAL

S12

CATALOGUE

| | |
|-----------------------------|----|
| Catalogue | 01 |
| Product Diagram | 02 |
| Package Content | 03 |
| Getting Started | 04 |
| - Charging | 04 |
| - Pairing & Connect | 05 |
| Wearing Comfortably | 07 |
| Touch Function | 08 |
| LED Indicator | 09 |
| LED Behavior | 09 |
| - Case LED Behavior | 09 |
| - Earbuds LED Behavior | 09 |
| Factory Reset | 10 |
| Care and Maintenance | 10 |
| Voice Prompt | 11 |
| FAQ | 12 |
| Specification | 14 |
| Warranty and Support | 15 |
| FCC Statements | 17 |

PRODUCT DIAGRAM



PACKAGE CONTENT

- True Wireless Earbuds
- Charging Case
- Ear-Tips (S/M/L)
- Micro-USB Type C Cable
- User Manual
- Warranty Card

GETTING STARTED

- Charging

Set the earbuds into the case and fully charge before first use. When charging is finished, the indicator will turn blue for 5s then turn off automatically, charge the case for extra 30 minutes.

Charge the Case

When charging case battery is low, the LED indicator will turn solid orange. Please charge the case instantly.

1. Insert USB Type C cable to the charging port and the case will charge automatically. (Please make sure the current is not greater than 5V 1A).
2. Please charge the case to full status at least once every 3 months if not in use for a long time.

Charge the Earbuds

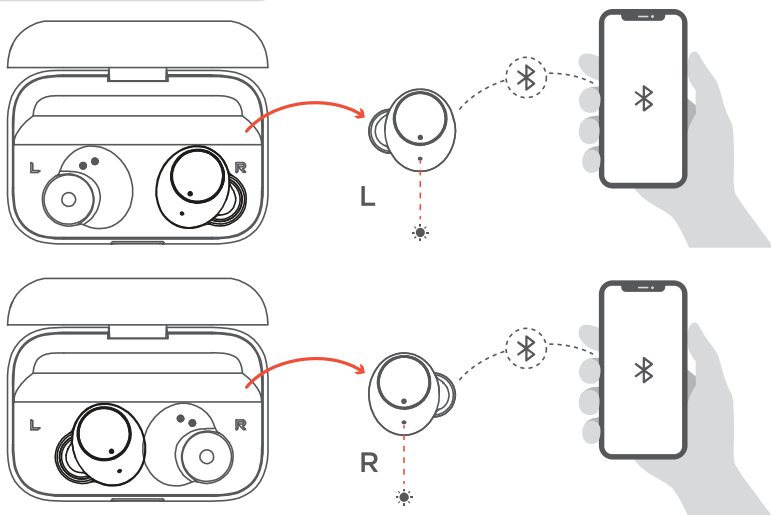
When the battery of Earbud is low, the red LED indicator flashes. Please charge the earbuds instantly.

1. Place the earbuds back into the case and the charging will be on automatically.
2. The case will stop charging when earbuds are fully charged.

GETTING STARTED

- Pairing & Connect

Single Bud Mode

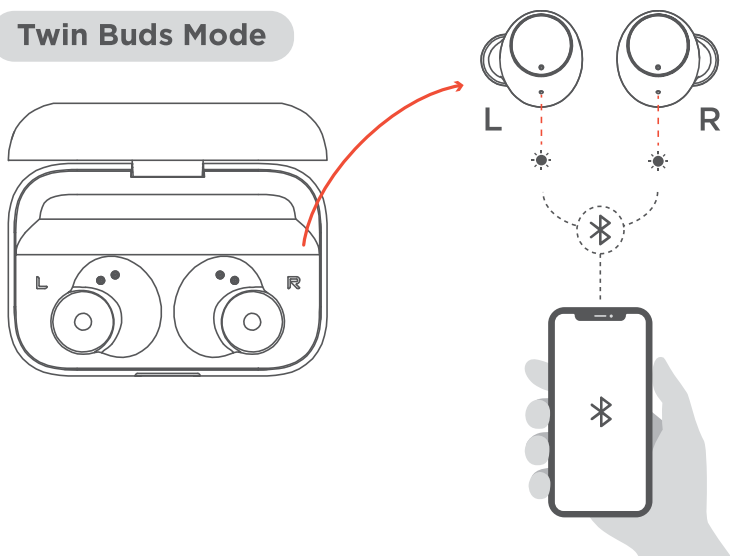


1. Turn on the Bluetooth device you want to pair with.
2. Take the L/R earbud out of the charging case.
3. Find and select **OKG-S12** from the available devices list.
4. The earbud and the device will be paired shortly.

Note: The earbuds will automatically connect with devices connected before. To ensure a faster reconnection, please turn on the Bluetooth devices then the earbuds.

GETTING STARTED

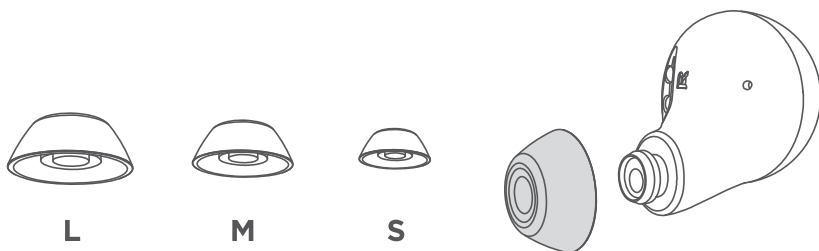
Twin Buds Mode



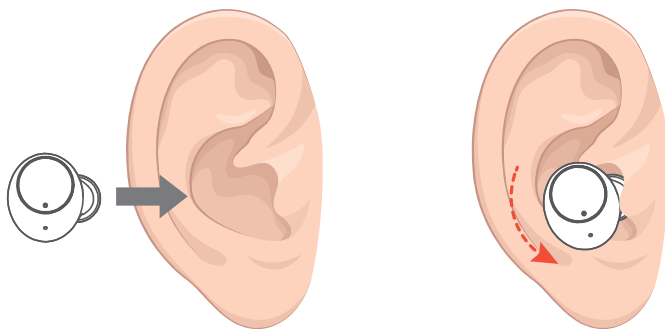
1. Turn on the Bluetooth device you want to pair with.
2. Take the earbuds out of the charging case and the R earbud (secondary) will pair with L earbud (primary).
3. Find and select **OKG-S12** from the available devices list.
4. The earbud and the device will be paired shortly.

Note: The earbuds will automatically connect with devices connected before. To ensure a faster reconnection, please turn on the Bluetooth devices then the earbuds.

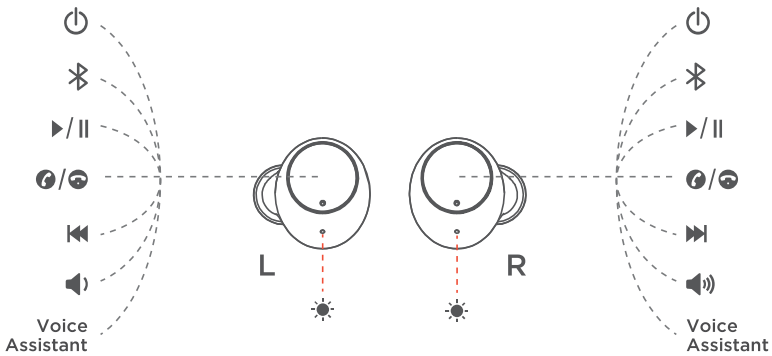
WEARING COMFORTABLY



1. Choose the ear tips that fit your ears the best.
2. Insert the earbuds into the inner canal of your ears.
3. Turn and find the most comfortable position.



TOUCH FUNCTIONS



| Function Support | Operation |
|--------------------------|--|
| Power On | Touch and Hold for 3s |
| Power Off | Touch and Hold for 5 Seconds (No music playing /calls on) |
| Play/Pause | Single Touch |
| Play Next/Previous | Double Touch L Earbud for Previous Double Touch R Earbud for Next |
| Answer/Hang-up Call | Single Touch L/R Earbud |
| Reject Call | Touch and Hold L/R Earbud 2s |
| Volume Up / Down | Touch and Hold R Earbud for Volume Up |
| Volume Up / Down | Touch and Hold L Earbud for Volume Down |
| Activate Voice Assistant | Triple Touch L/R Earbud |

Note:

Single Left earbud mode do not support Play Next, Volume Up.
Single Right earbud mode do not support play Previous, Volume Down.

LED INDICATOR

- Case LED Behavior

| Status | Earbuds LED Indicator |
|--------------------|-----------------------|
| Case Battery Low | White LED Flashes |
| Case Charging | Orange LED Flashes |
| Case Fully Charged | Solid Orange |
| Earbuds Charging | Solid White |

- Earbuds LED Behavior

| Status | Earbuds LED Indicator |
|--------------------------------|---------------------------|
| Power On | Blue Flash 1s |
| Power Off | Red Flash 1s |
| Searching Earbuds | Red and Blue Flashes |
| Earbuds Successfully Connected | Blue LED Flashes 6s |
| Music/Call Mode | LED Off |
| Low Battery | Red LED Flashes |
| Charging | Solid Red |
| Fully Charged | Turn Blue for 5s then Off |

FACTORY RESET / CARE AND MAINTENANCE

- Factory Reset

Reset the earbuds if the earbuds cannot connect with each other properly or cannot connect with your device properly.

1. Turn off Bluetooth at your devices or delete the connect history. Turn off the earbuds.
2. Touch and hold the earbuds till the red and blue light flashes, then touch the earbuds 3 times and the red & blue lights will light on 1 second and the earbuds will power off automatically.
3. The earbuds Bluetooth connection is reset.

Note

Please reset the earbuds in pair instead of single one

- Care and Maintenance

- Wearing for swimming is not support.
- Keep the earphones away from heat and humidity after using.
- Do not put the product under direct sunlight or hot areas. High temperatures will shorten lifespan of the earphones, battery and / or the internal circuit board.
- Power off the earphones when not in use and before storing.
- Do not try to take the product apart.
- Do not drop or knock your earphones on hard surfaces.

VOICE PROMPT

| Control | Voice Prompt |
|--|---------------------------|
| Turn On | Power On |
| Turn Off | Power Off |
| L & R Pairing with Each Other | Pairing |
| Main Earbud Paired (Default L) | Primary |
| Secondary Earbud Paired (Default R) | Secondary |
| Earbuds Connected with Bluetooth Devices | Your Headset is Connected |
| Lost Connect | Link Lost |
| Disconnect | Disconnected |
| Double Tap L | Reverse |
| Double Tap R | Forward |
| Call Income | Incoming Call |
| Reject Call | Call Rejected |
| Voice Up/Down | Beep |
| Min Volume | Minimum Volume |
| Max Volume | Maximum Volume |
| Low Battery | Low Battery |

FAQ

Q: Do the earbuds support working alone?

A: Yes, they can work play music or make phone call alone.

Q: Can I use this for swimming?

A: These earbuds is IPX8 waterproof for daily life and sustains from sweats, rain and shower. It does not support swimming.

Q: I tried to connect to OKG-S12 earphones, but my device says “connection failed”?

A: Please try to reset the earbuds.

Q: The sound is not very clear / the caller cannot hear my voice clearly.

A: Please adjust the volume on your phone. Make sure there is no source of interference nearby. Stay close to your phone.

Q: Why the connection is not stable and cuts out intermittently?

A: Bluetooth signal transmission can be affected by wireless signal around and barriers between. Please make sure there are no objects between the earphones and your Bluetooth device, and no radio or Wi-Fi interference nearby.

FAQ

Q: What is the range of Bluetooth earphones?

A: Bluetooth earphones have maximum range of 33 feet (10 meters without obstacles).

Q: Can I use this on a plane?

A: Yes, it can be used on a plane but please don't use when takeoff and landing.

Q: Do these ear buds have noise cancelling tech?

A: Yes, it supports DSP noise cancelling.

Q: Does it support caller number announce?

A: Yes, it supports incoming call number announce.

SPECIFICATION

| | |
|-----------------------|--|
| Bluetooth Version | Bluetooth 5.0 |
| Maximum Working Range | 33 ft/10 m (no obstacle) |
| Driver | 6 mm |
| Frequency Response | 20Hz-20000Hz |
| Impedance | 16 ohms |
| Play Time | 5 hours |
| Earbuds Charging Time | 1 hour |
| Case Charging Time | 1.5 hours |
| Earbud Power Capacity | 55 mAh |
| Case Power Capacity | 600 mAh |
| Recharge Times | 4 Times for both earbuds |
| Standby Time | 60 Hours (Connected to Bluetooth Device) |
| Earbud Weight | 0.16 oz / 4.5 g |
| Earbuds Waterproof | IPX8 |
| Noise Cancelling | DSP |

WARRANTY AND SUPPORT

Customer Support

If you need any assistance or support, please email

✉ service@okg.vip with details.

We will reply within 24 hours.

For more information, please visit

🌐 www.okg.vip

or Scan the **QR code** ▼



WARRANTY AND SUPPORT

Warranty

The warranty of this TWS earbuds is **12 MONTHS** from date of the original purchase for manufacturer defects.

If the device fails due to a manufacturing defect, please contact seller directly to initiate return and warranty process.

OKG warranty coverage excludes the following:

- Purchased as second hand, used or from unauthorized seller.
- Damages resulted from misuse and abusive action.
- Damages resulted from chemical, fire, radioactive substance, poison, liquid.
- Damages resulted from natural disaster.
- Damages caused to any third party / person / object and beyond.

FCC STATEMENTS

Changes or modifications not expressly approved by the party responsible for compliance could void the user's authority to operate the equipment.

This device complies with Part 15 of the FCC Rules. Operation is subject to the following two conditions:

- (1) This device may not cause harmful interference.
- (2) This device must accept any interference received, including interference that may cause undesired operation.

Note:

This equipment has been tested and found to comply with the limits for a Class B digital device, pursuant to Part 15 of the FCC Rules. These limits are designed to provide reasonable protection against harmful interference in a residential installation. This equipment generates, uses, and can radiate radio frequency energy, and if not installed and used in accordance with the instructions, may cause harmful interference to radio communications. However, there is no guarantee that interference will not occur in a particular installation. If this equipment does cause harmful interference to radio or television reception, which can be determined by turning the equipment off and on, the user is encouraged to try to correct the interference by one or more of the following measures:

- Reorient or relocate the receiving antenna.
- Increase the separation between the equipment and receiver.
- Connect the equipment into an outlet on a circuit different from that to which the receiver is connected.
- Consult the dealer or an experienced radio/TV technician for help.

FCC ID: 2AV55-S12



service@okg.vip

www.okg.vip