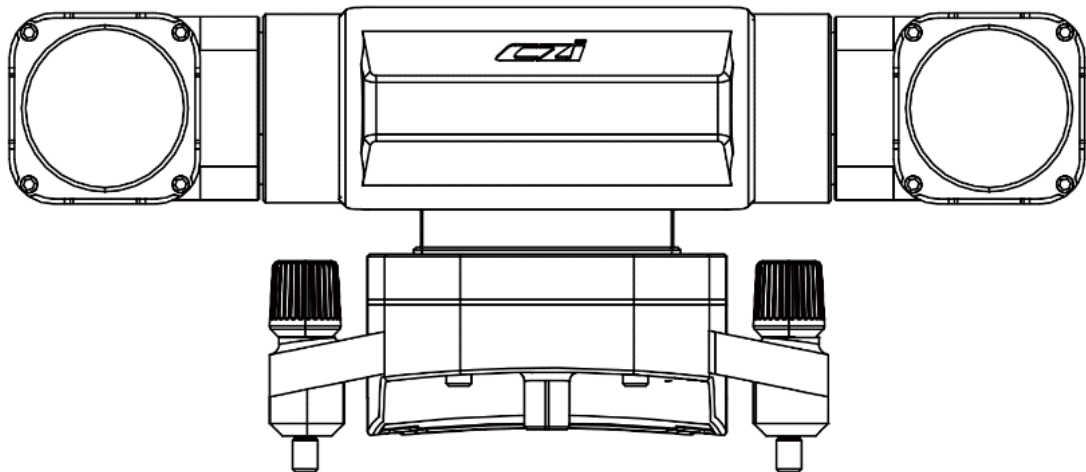


GL10 Gimbal Searchlight

User Manual (V1.1)

2023.8.16



目录

I.Disclaimers and Warnings	1
II.Introduction to GL10 Gimbal Searchlight	3
III.Activation Tutorial for GL10 Gimbal Searchlight	6
IV.User Manual for GL10 Gimbal Searchlight.....	12
V .Firmware Upgrade Tutorial for GL10 Gimbal Searchlight.	17
5.1 Firmware Upgrade through Bluetooth	17
5.2 Firmware Upgrade through czi Pilot.....	20

I.Disclaimer and Warnings

Thank you for purchasing our intelligent product. The contents mentioned in this article are related to your safety and legitimate rights and responsibilities, so please read this article carefully to set up the product correctly before using. Harms of hurting you or the people around you or this product or other surrounding items may be caused as a result of failing to follow the instructions and warnings herein. The right for final interpretation of this article and all related documents is vested in CZI. Subject to update without notice. Please visit www.gzczzn.com for the latest product information.

Warnings

The GL10 Gimbal Searchlight is a precision optical device. In case of any hardware issues, please contact our after-sales service for assistance. Do not attempt to disassemble or repair the device yourself, as it will void the warranty and service eligibility.

Precautions

1.The GL10 Gimbal Searchlight operates at a default power limit of 30% before the drone takes off (the power can be manually adjusted to 50% or 100%). After takeoff, the power can be increased to 100%.

2.During the operation of the GL10 Gimbal Searchlight, please avoid direct contact with the outer shell of the light as it may cause burns by high temperature.

FCC Warning Statement

Changes or modifications not expressly approved by the party responsible for compliance could void the user's authority to operate the equipment. This equipment has been tested and found to comply with the limits for a Class B digital device, pursuant to Part 15 of the FCC Rules. These limits are designed to provide reasonable protection against harmful interference in a residential installation. This equipment generates uses and can radiate radio frequency energy and, if not installed and used in accordance with the instructions, may cause harmful interference to radio communications. However, there is no guarantee that interference will not occur in a particular installation. If this equipment does cause harmful interference to radio or television reception, which can be determined by turning the equipment off and on, the user is encouraged to try to correct the interference by one or more of the following measures:

- - Reorient or relocate the receiving antenna.
- - Increase the separation between the equipment and receiver.
- - Connect the equipment into an outlet on a circuit different from that to which the receiver is connected.
- - Consult the dealer or an experienced radio/TV technician for help.

This device complies with part 15 of the FCC Rules. Operation is subject to the following two conditions:

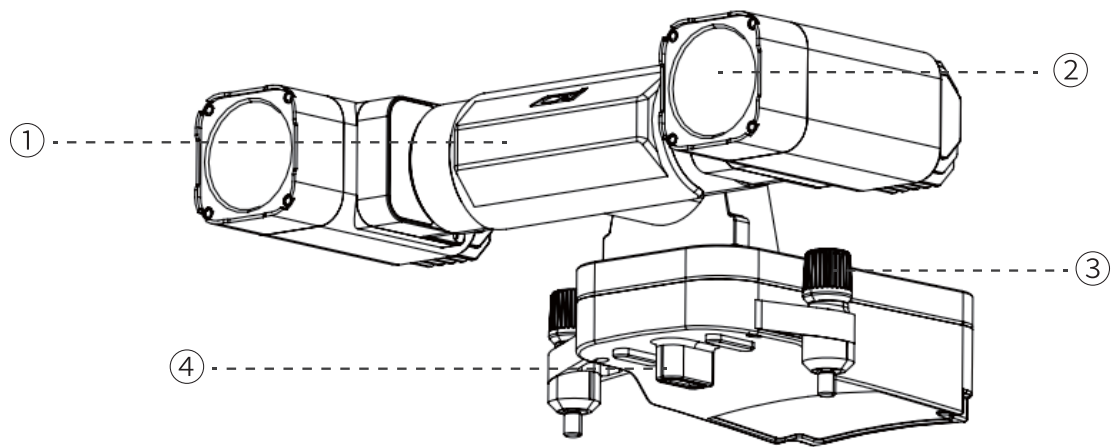
- (1) This device may not cause harmful interference, and
- (2) this device must accept any interference received, including interference that may cause undesired operation.

RF Exposure Statement

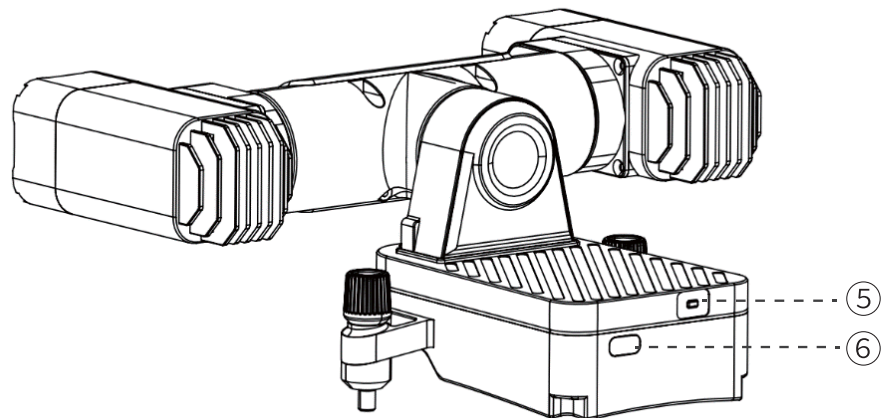
To maintain compliance with FCC's RF Exposure guidelines, This equipment should be installed and operated with minimum distance of 20cm the radiator your body. This device and its antenna(s) must not be co-located or operation in conjunction with any other antenna or transmitter.

II.Introduction to GL10 Gimbal Searchlight

The GL10 Gimbal Searchlight is the first lightest gimbal searchlight in the industry, designed specifically for the DJI Mavic 3 industrial drone, weighing less than 140g and with a rated power of 20W. The GL10 Gimbal Searchlight features an optical imaging lens structure with an emission angle of 13°. By connecting to the DJI Pilot 2 APP, you can control the power switch, switch between steady light and flashing modes, and the light will automatically follow the movement of the gimbal camera. The GL10 Gimbal Searchlight is equipped with an advanced automatic temperature control system, ensuring that the light attenuation is less than 5% after 1000 hours of operation.



(1)GL10 Gimbal Searchlight (Front view)



(2)GL10 Gimbal Searchlight (Rear view)

1) Red and blue light

2) White spotlight

3) Anti-loose screw

4) Power and communication port

5)Reset button

6) Indicator light

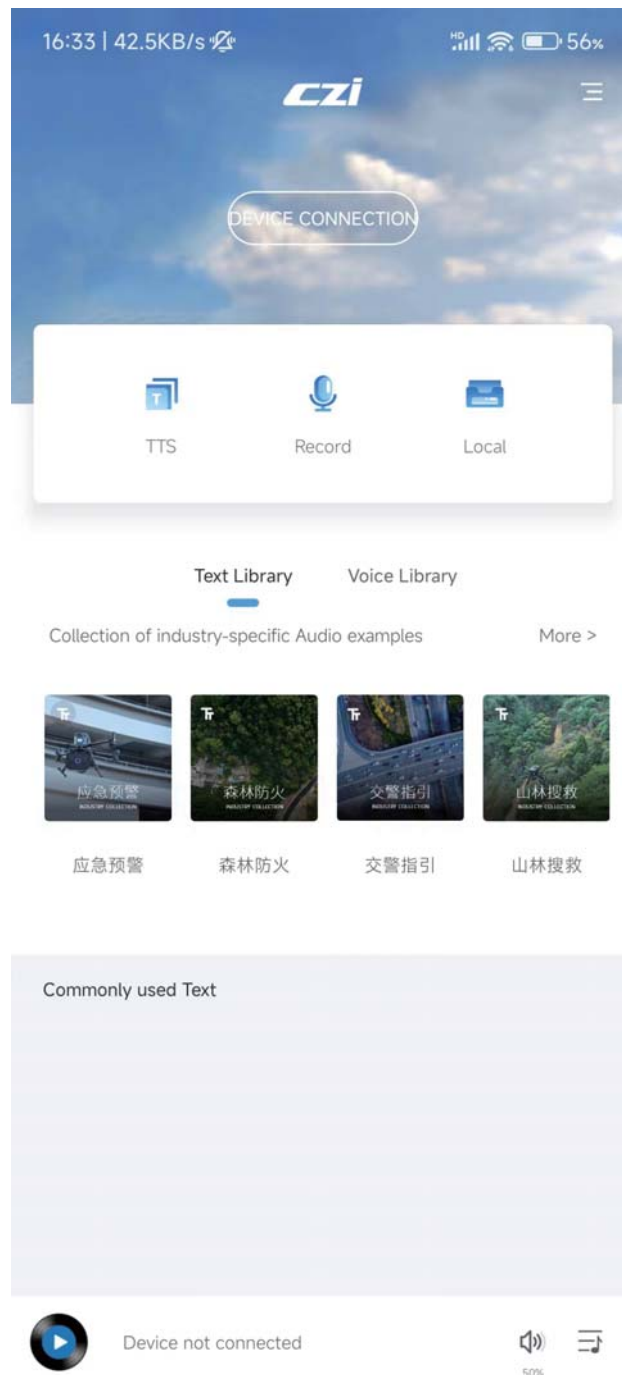
Technical Parameter

Model	GL10		
Electrical interface	DJI PSDK		
Weight / g	130±4%		
Dimension / mm	L107*W128*H51.5		
Total power / W	30		
White LED power /W	20		
Red and blue LED power / W	2		
Supply voltage / V	15		
Luminous flux / lm	1830±3%		
FOV /°	12.5		
Illumination distance / m	100	75	50
Beam diameter / m	22.8	17.1	11.4
Illumination area / m2	407	229	102
Center illuminance / Lux	5.8	13.3	22.8
Basic functions	White light night illumination		
	Red and blue flashing		
	Dual-axis gimbal stabilization		
	Gimbal AI algorithm automatic adjustment		
Gimbal controllable rotation range	Pitch	-90°——+70°	
Operating temperature	-20℃ ~ +50℃		

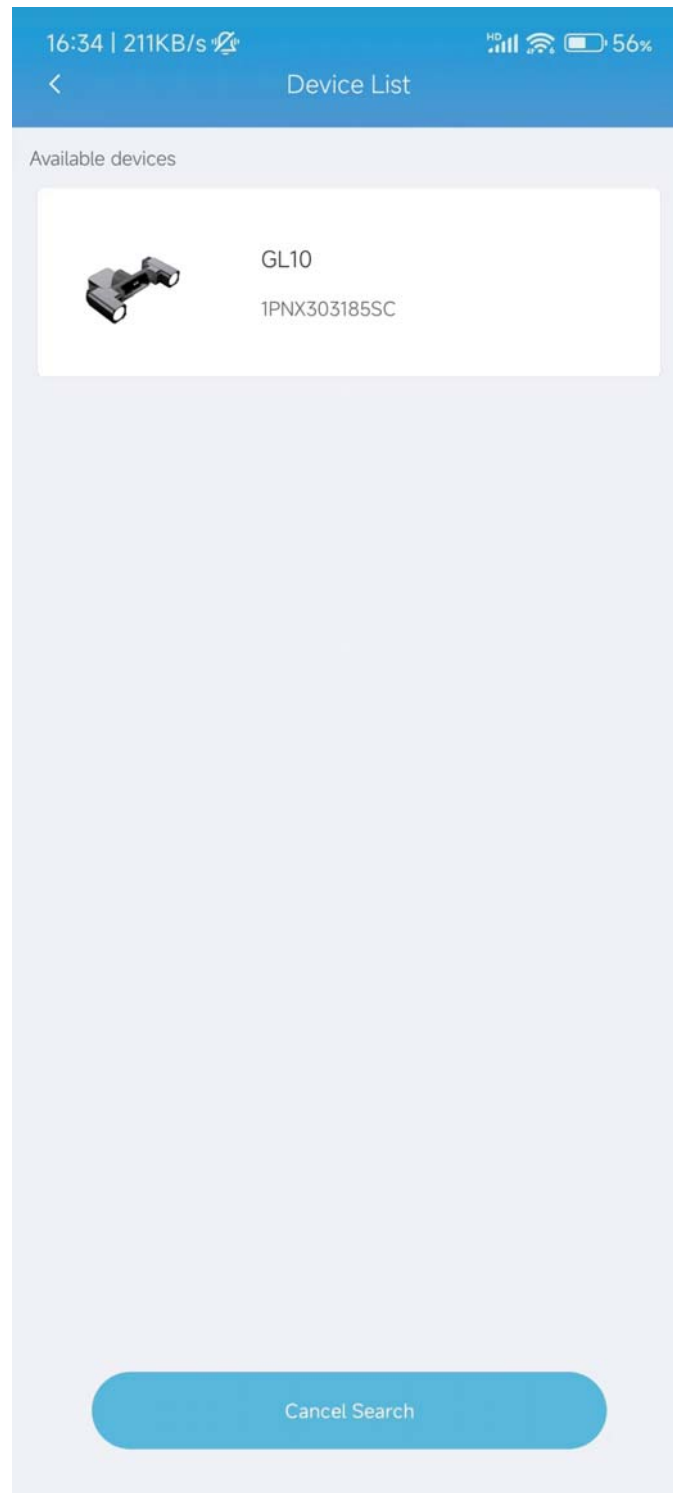
III.Activation Tutorial for GL10 Gimbal Searchlight

3.1 Activate in the czi sound APP

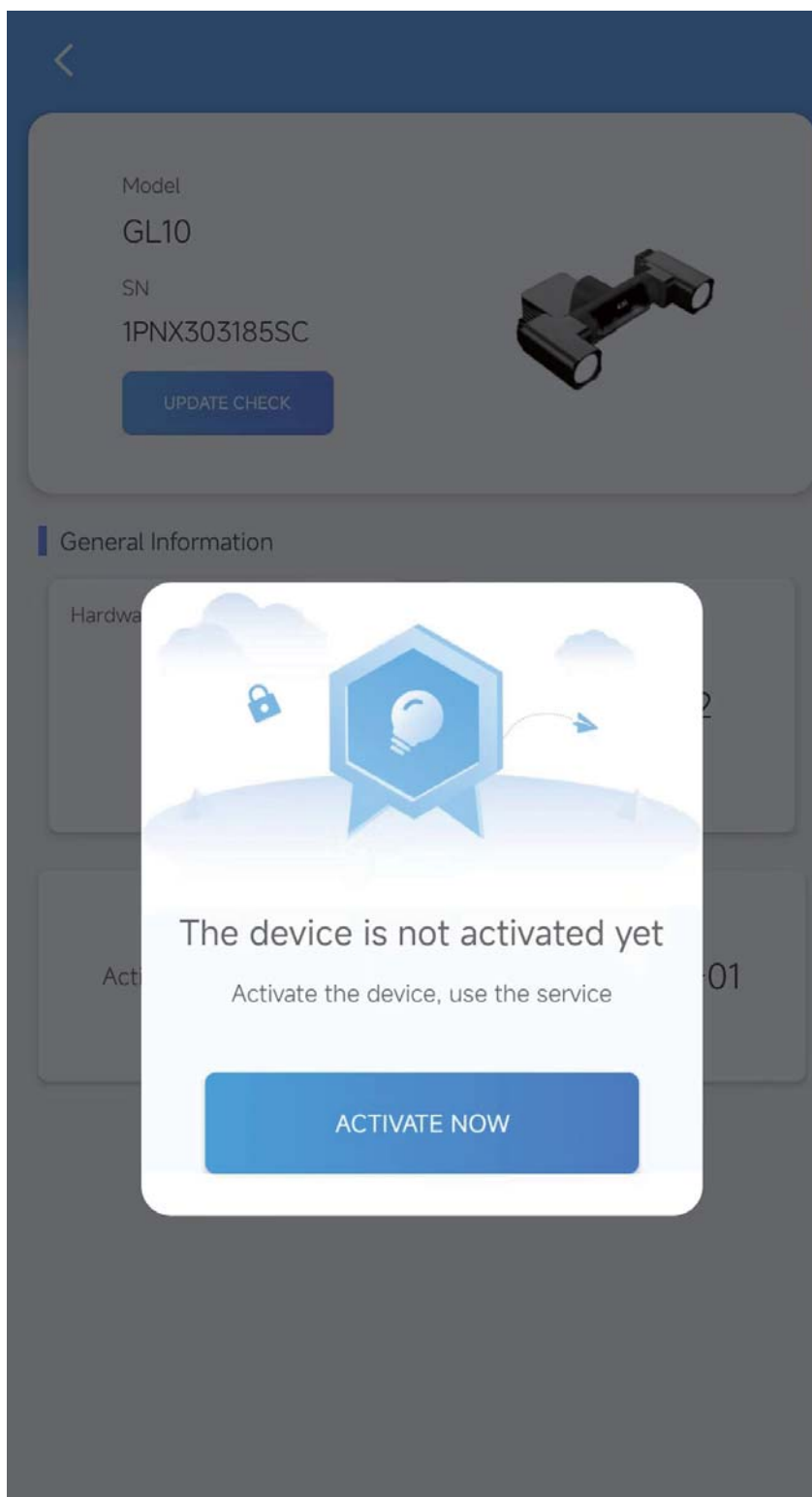
3.1.1 Open the czi sound APP, register, and log in to your account. Enter the main interface and click on Connect Device.



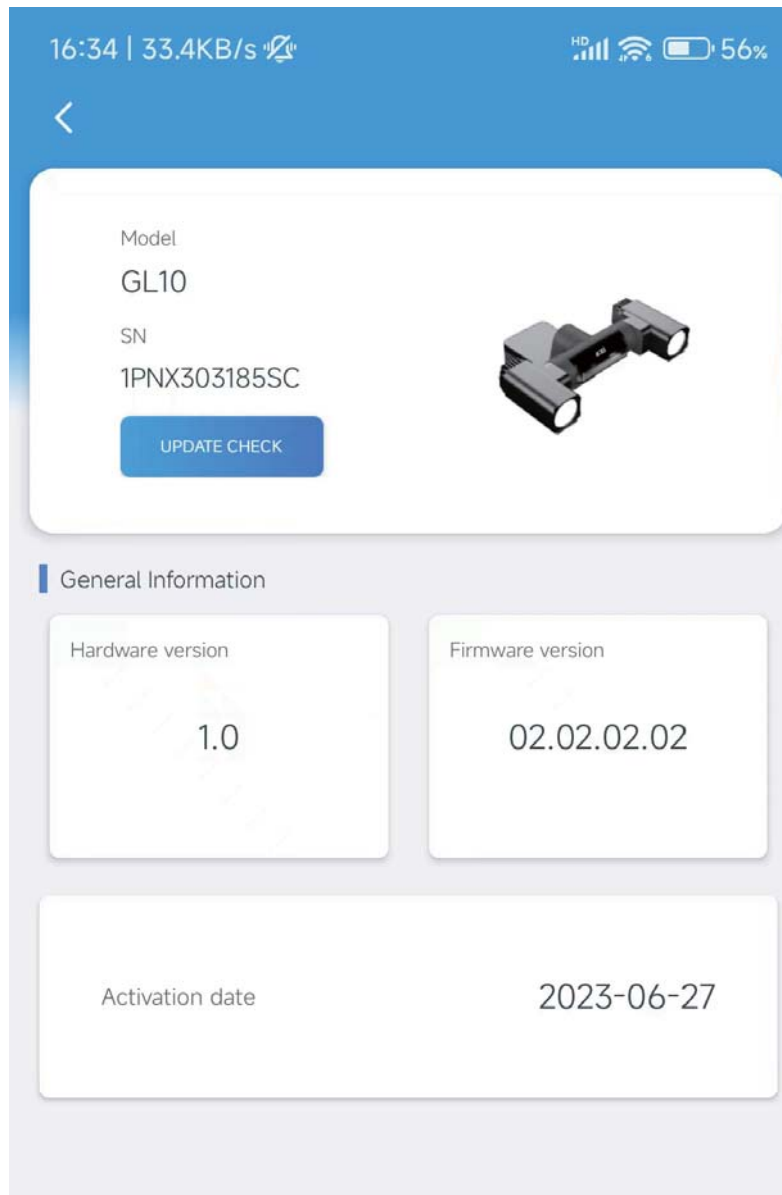
3.1.2 Select the Available device.



3.1.3 Click on Activate Now.

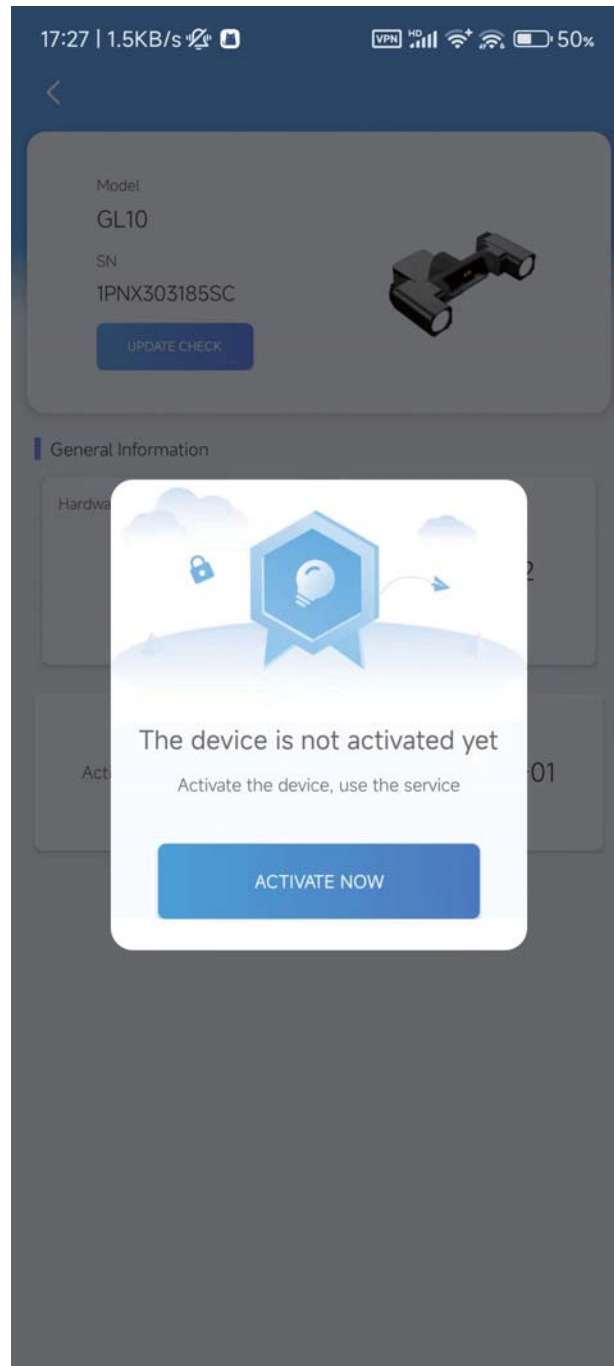


3.1.4 The interface displays the Product serial number (e.g., 1PNX) and Activation time (e.g., 2023-06-27), indicating that the device has been successfully activated.



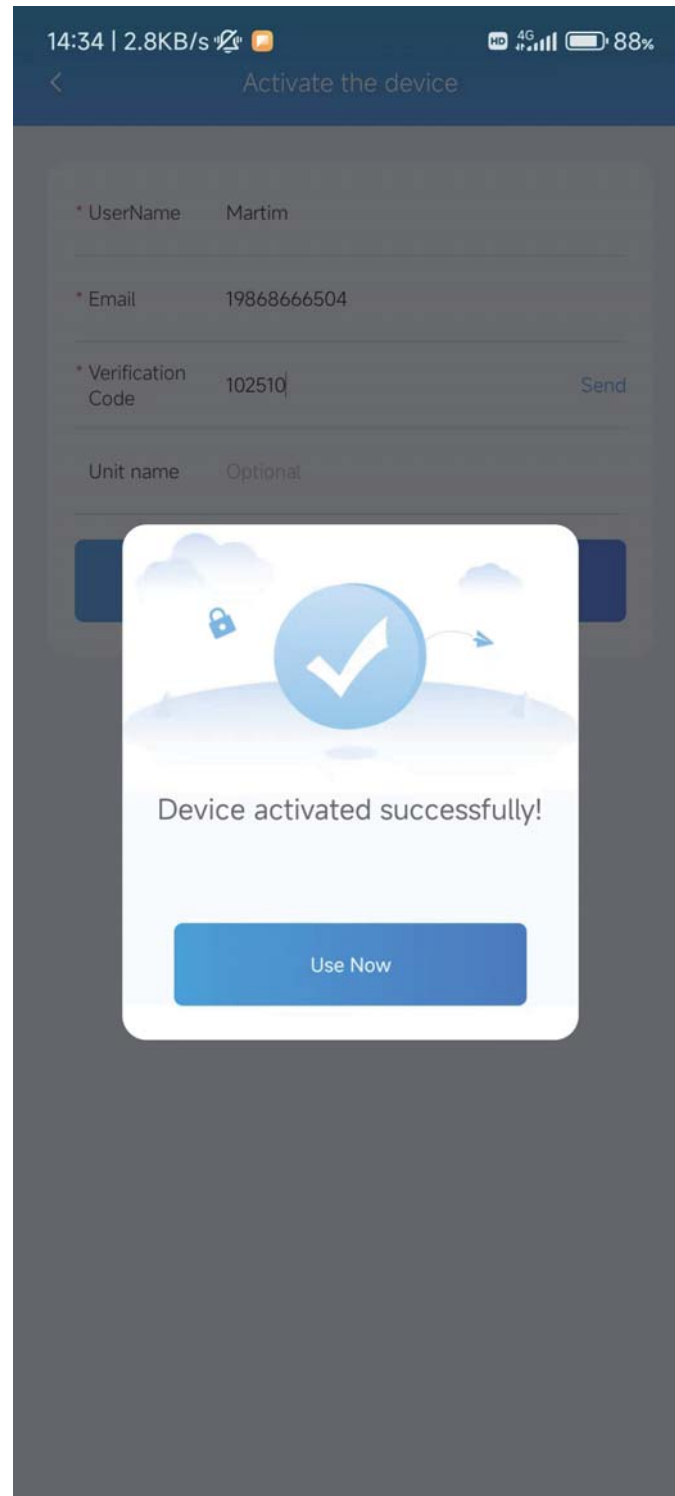
3.2 Activate in the czi Pilot app

3.2.1 Properly install the GL10 Gimbal Light on the drone. Enable Bluetooth on the remote controller and open the czi Pilot APP. Search for and connect to the GL10 device. Click on Activate.



3.2.2 Activation notice popup. Follow the instructions and click Agree.

3.2.3 Successfully activated.



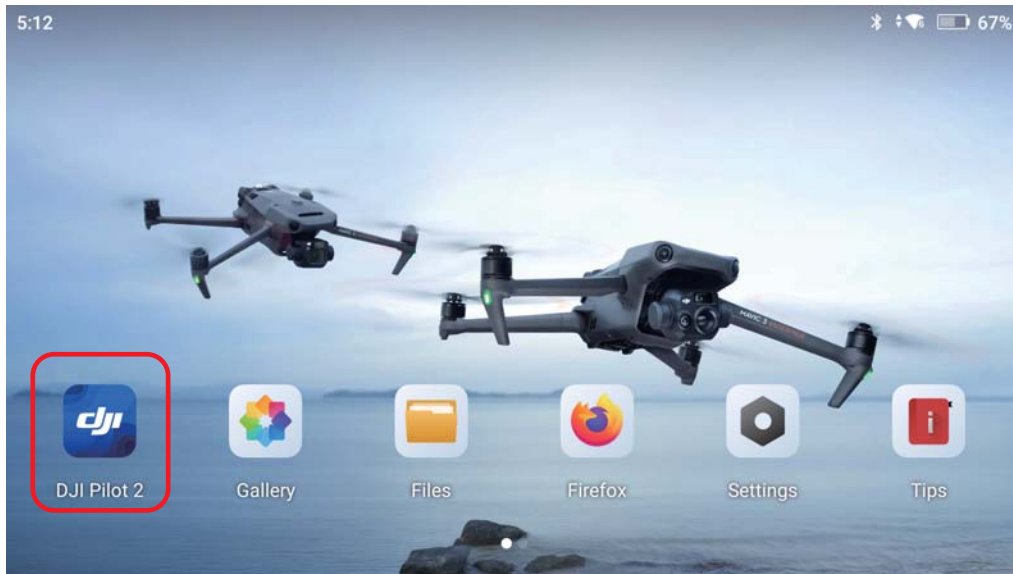
IV. User Manual for GL10 Gimbal Searchlight

4.1 User Manual for DJI Pilot 2

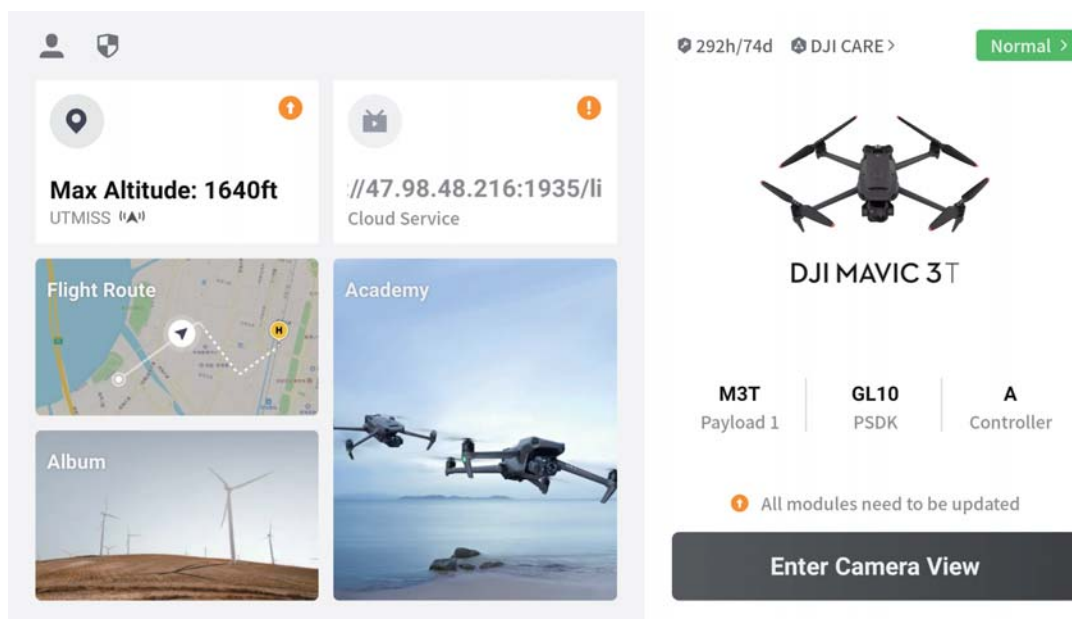
4.1.1 Install the GL10 on the drone and tighten the screws securely.

4.1.2 Power on the drone correctly (short press for one second or long press for three seconds) to start the drone.

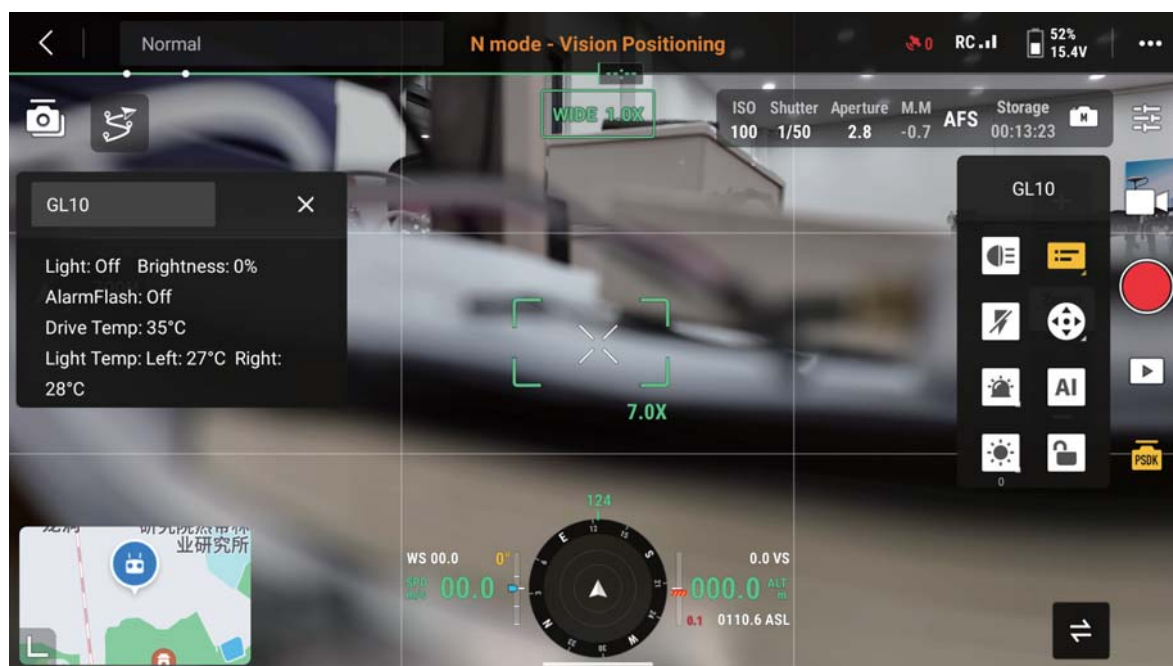
4.1.3 Turn on the remote controller and open the APP.







4.1.4 Enter the main interface, which displays the GL10 letters, indicating a successful connection to the load. Click on the bottom right corner of the screen to enter the flight interface.



4.1.5 Click the PSDK button to display the control buttons of GL10.



4.1.6 Introduction to GL10 Gimbal Searchlight Control Buttons.

	Turn off the light		Turn on the light
	Turn off the flashing mode		Turn on the flashing mode
	Turn off the warning lights		Turn on the warning lights
	Activate red warning lights		Activate blue warning lights
	Adjust brightness		Adjust brightness
	Disable automatic beam centering algorithm		Enable automatic beam centering algorithm
	Enable gimbal follow mode		Lock the gimbal follow mode

4.2 czi Pilot User Tutorial

4.2.1 Install the GL10 on the drone and tighten the screws securely. Open the czi Pilot app on the remote controller.



4.2.2 Click on Enter the device.

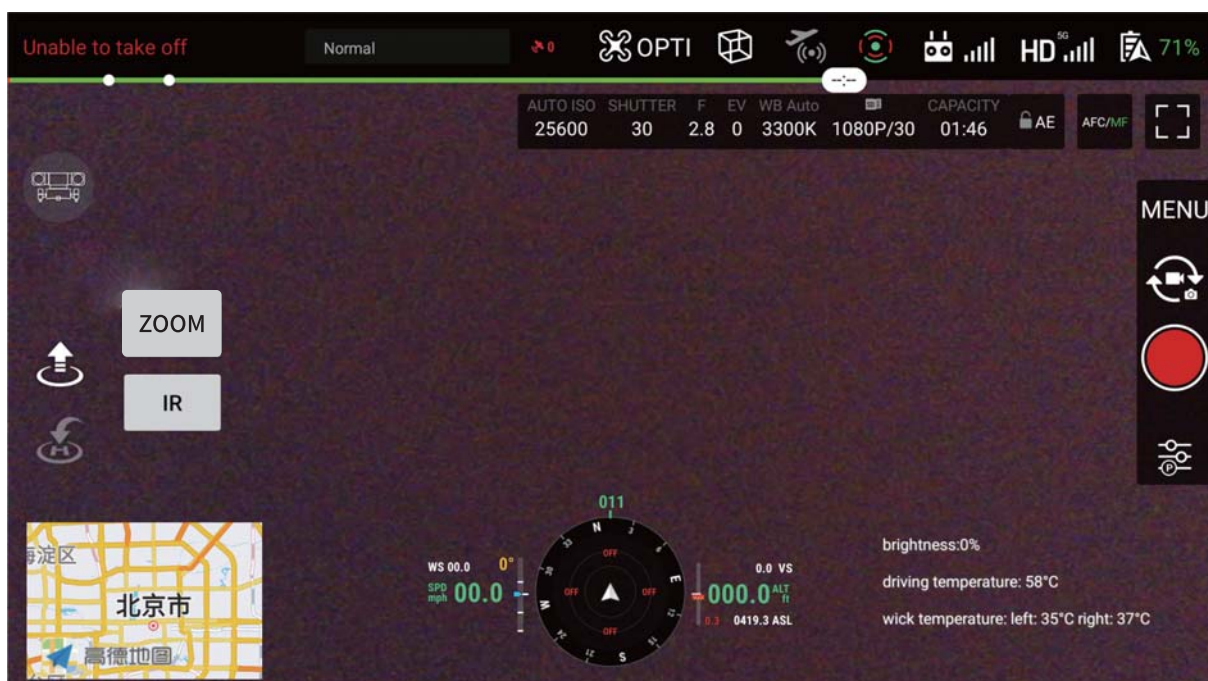


GL10

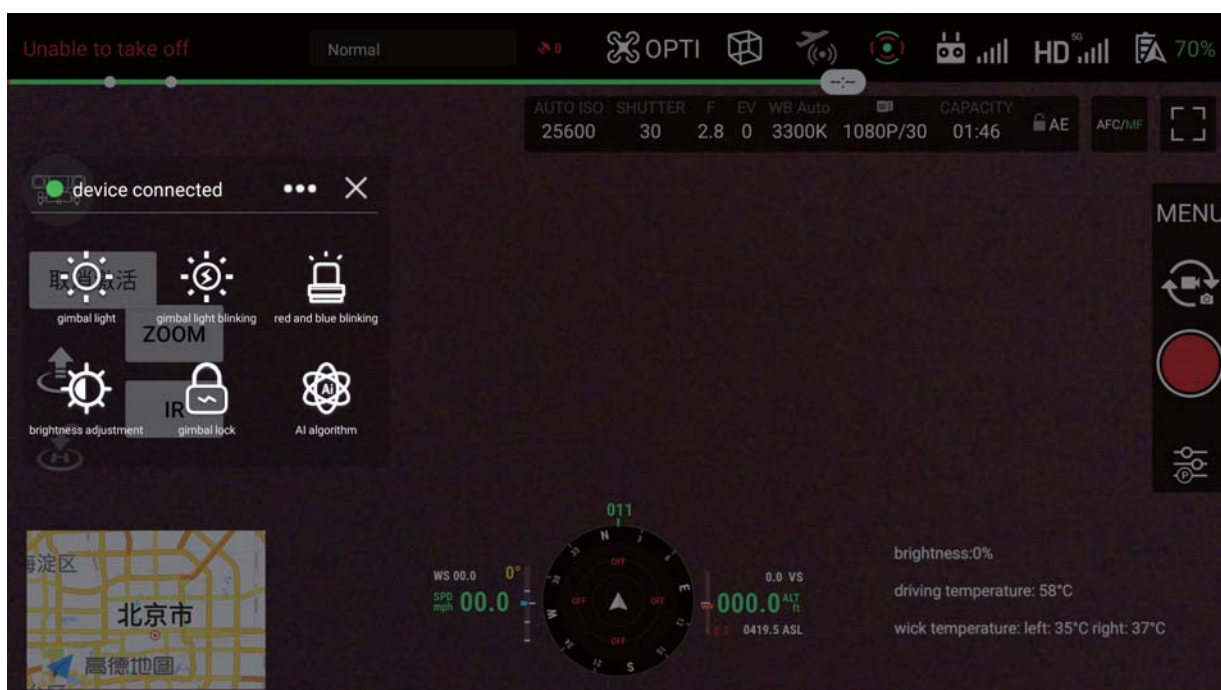
● DJI MAVIC_3 ENTERPRISE

[connect device >>](#)

4.2.3 Click on the GL10 icon in the top-left corner.



4.2.3 Click on the GL10 icon in the top-left corner.



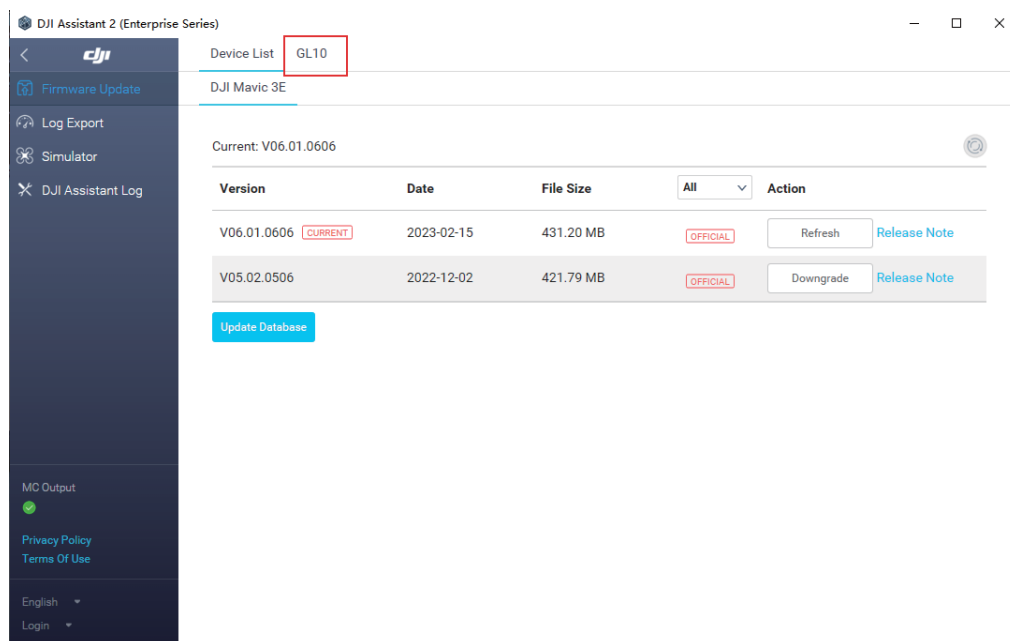
V. Firmware Upgrade Tutorial for GL10 Gimbal Searchlight

5.1 Upgrade using DJI Assistant 2

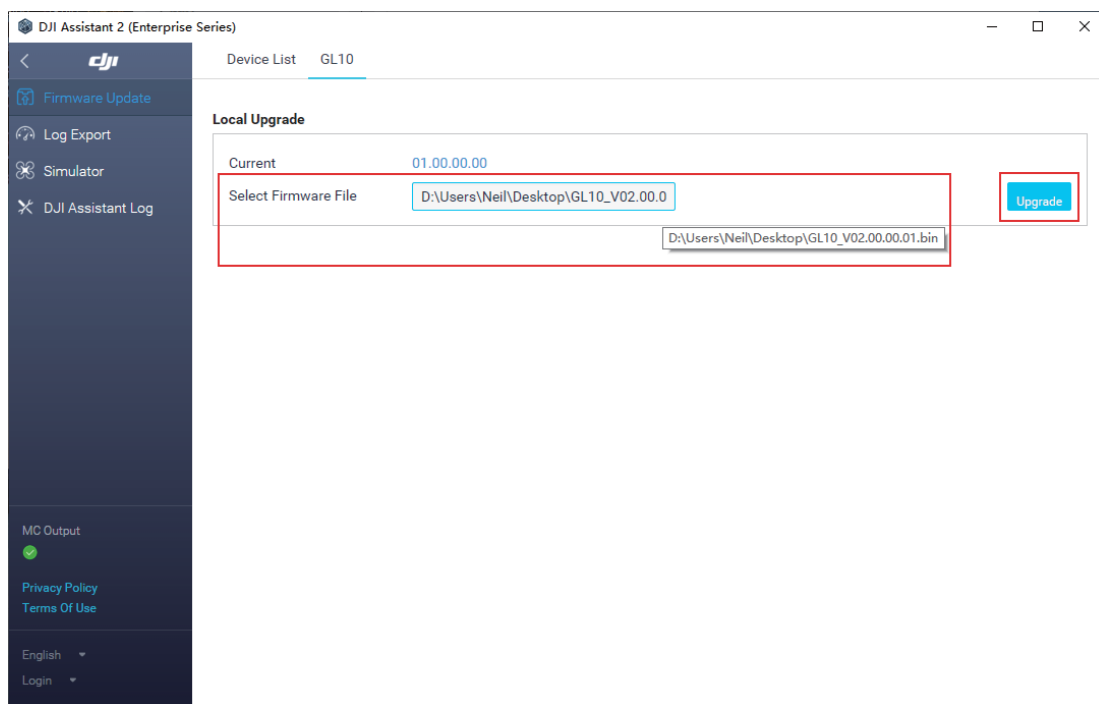
5.1.1 Install the GL10 Gimbal Searchlight on the drone and power on the drone. Open DJI Assistant 2 on your PC and use the Type-C cable provided with the drone to connect the computer and the drone.



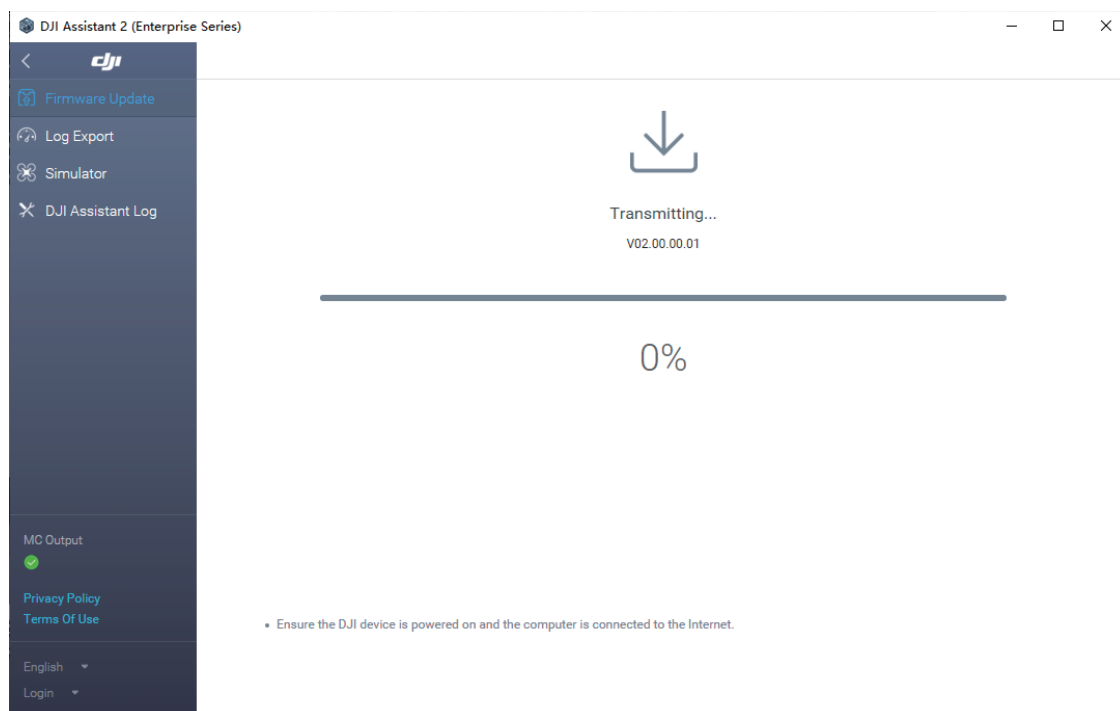
5.1.2 After successful connection, the software interface will display GL10, Click on GL10.

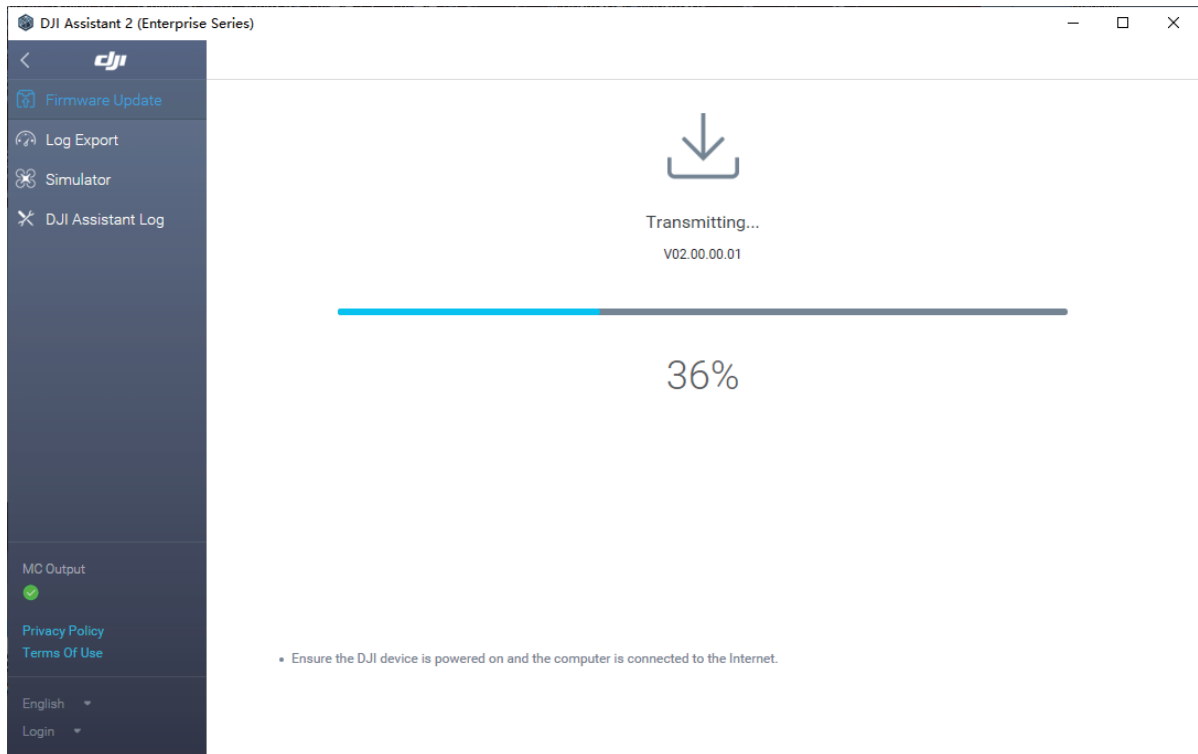


5.1.3 Download the latest firmware from the official website www.gzczzn.com to your local device. Select the latest firmware bin file and click on Upgrade.

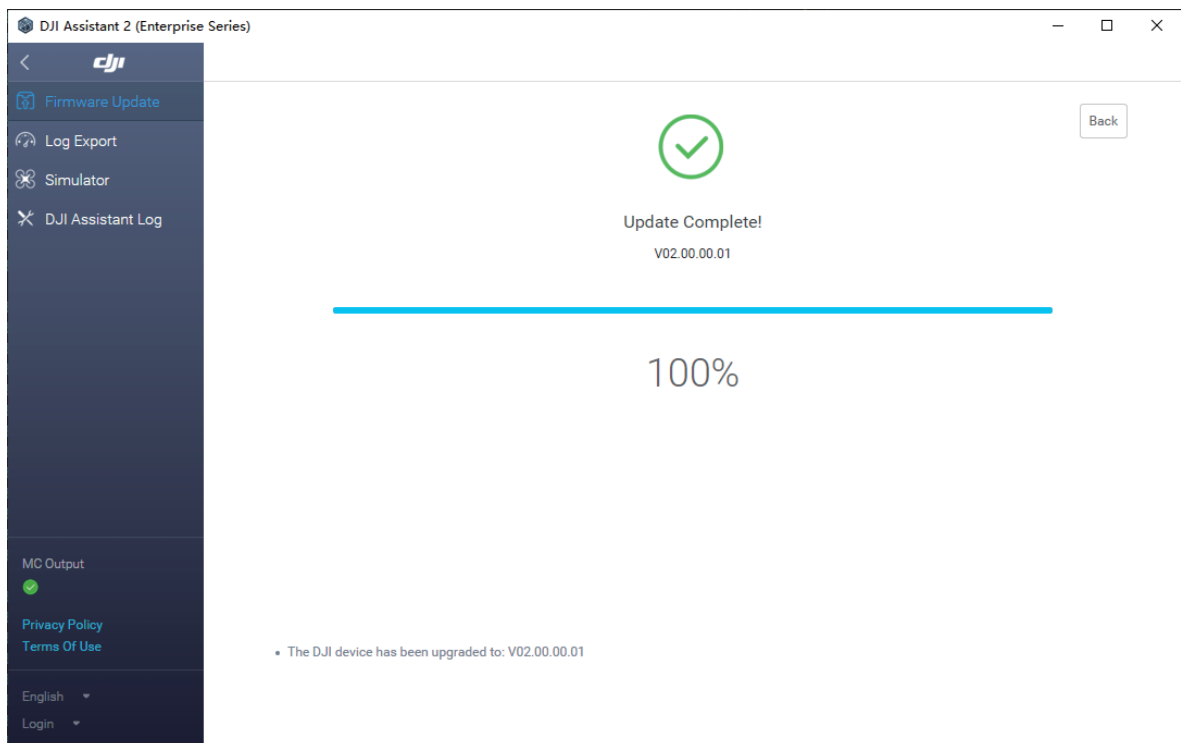


5.1.4 Waiting for upgrade.



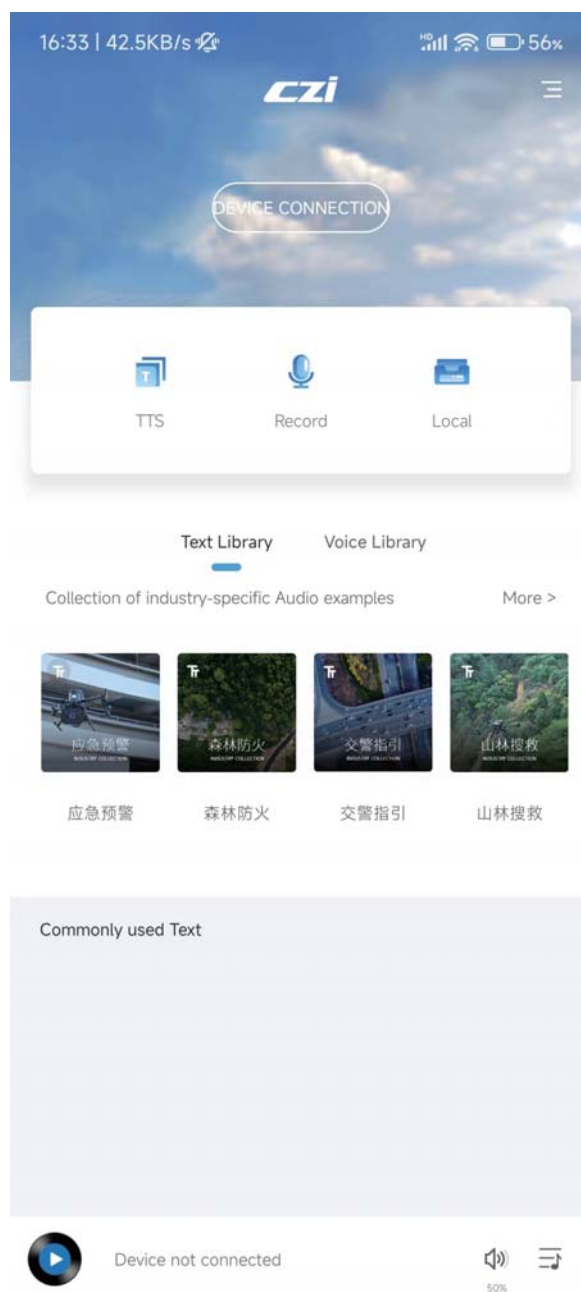


5.1.5 Upgrade completed.

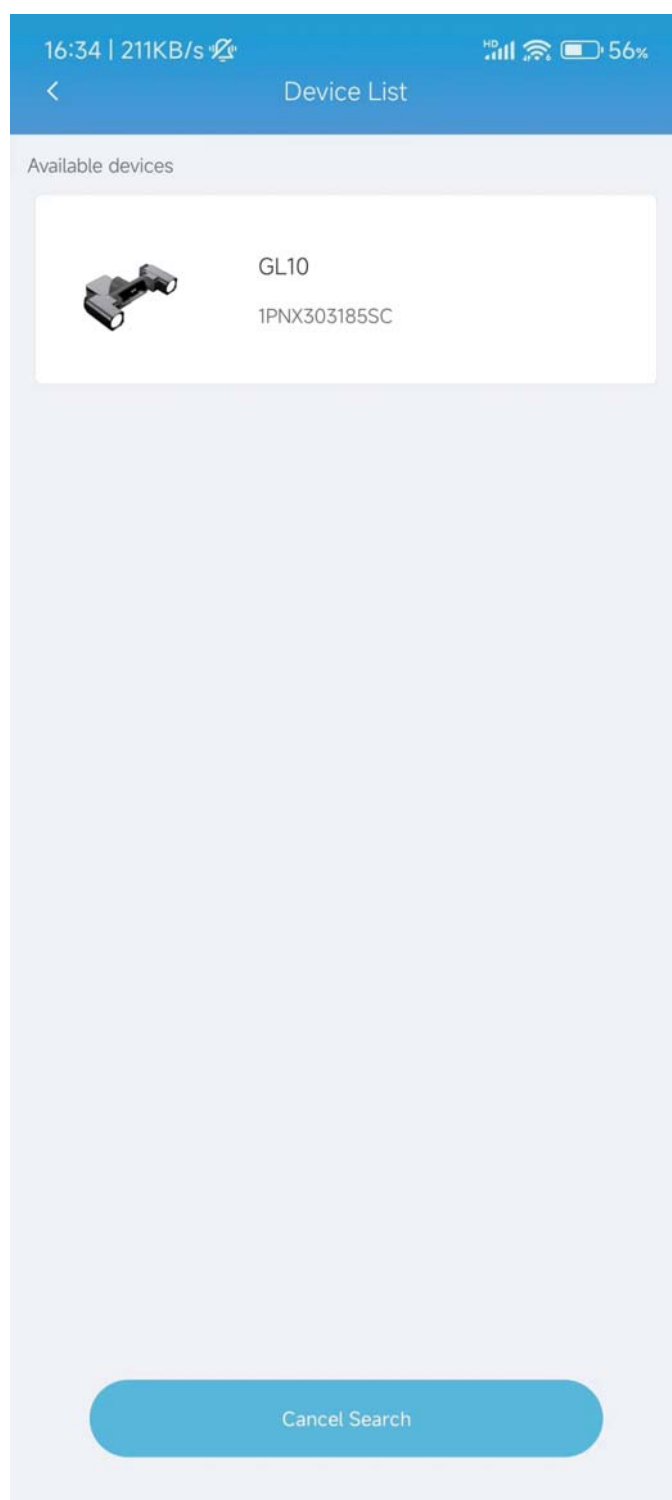


5.2 Upgrade in czi sound APP.

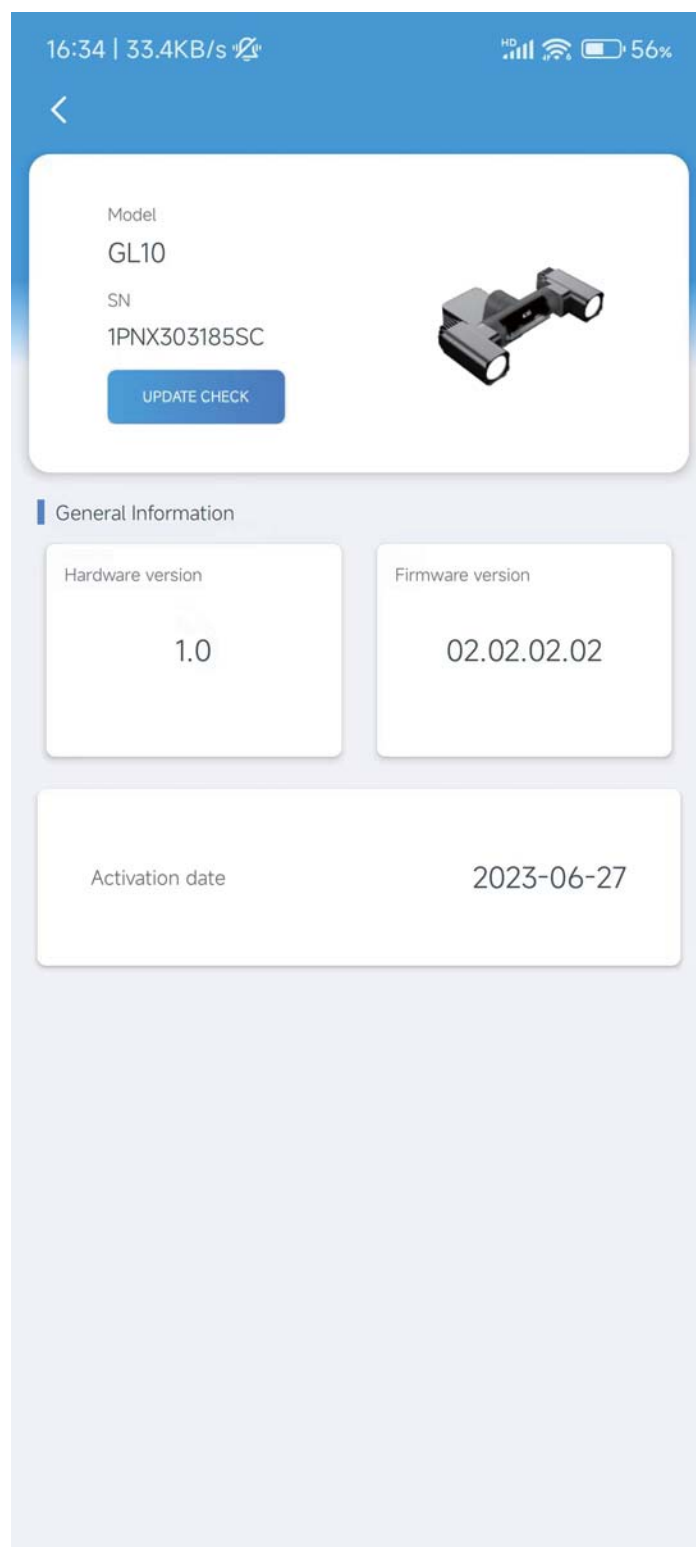
5.2.1 Enter the czi sound APP.



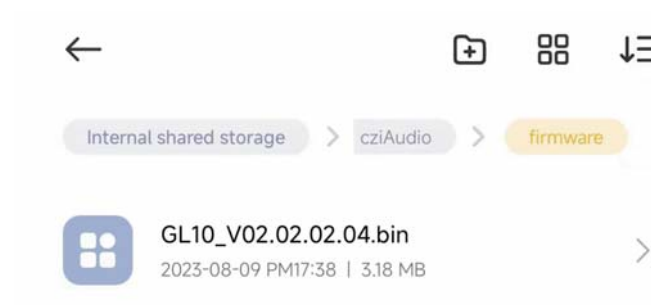
5.2.2 Connect the devices.



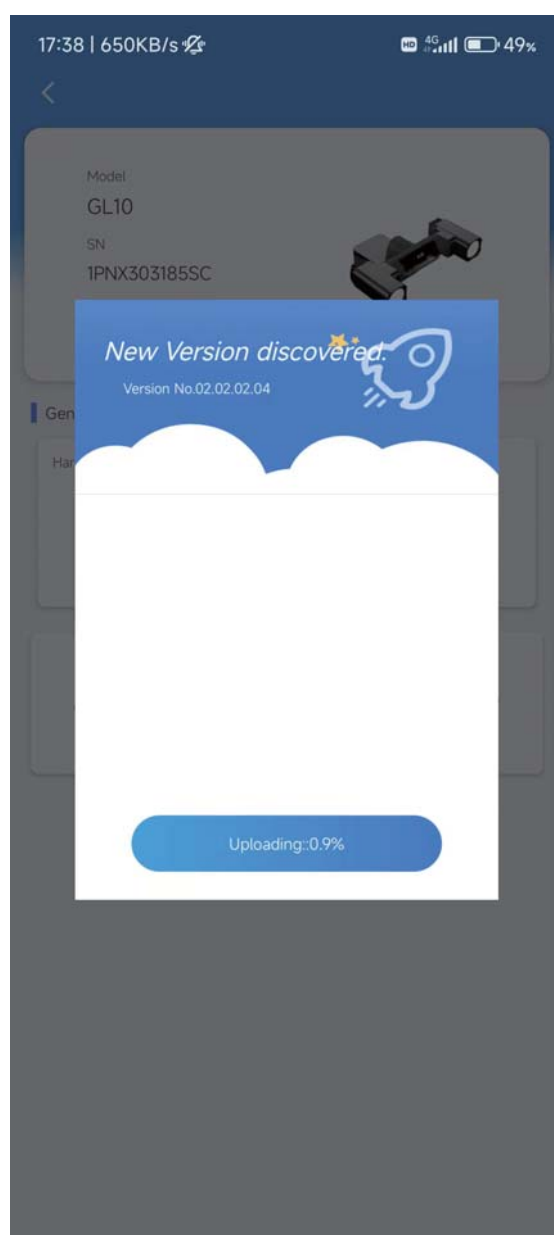
5.2.3 Click on Check for upgrade.



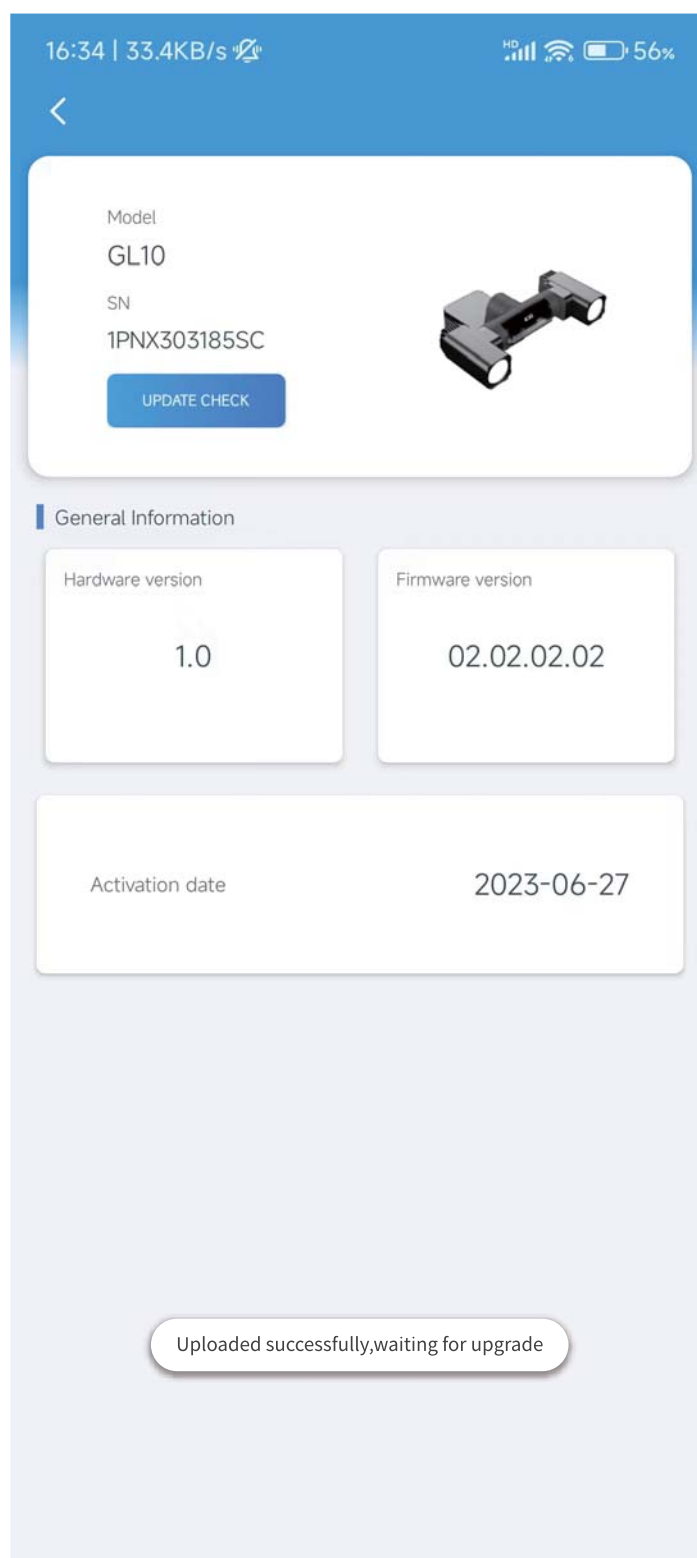
5.2.4 Select local bin file.



5.2.5 Waiting for upload.



5.2.6 Waiting for upgrade.



ChengZhi Support

www.gzczzn.com

Service hotline: 400-008-8306

If you have any questions or suggestions
about the instructions, Please contact us
through the following email address:

service@gzczzn.com

Printed in China