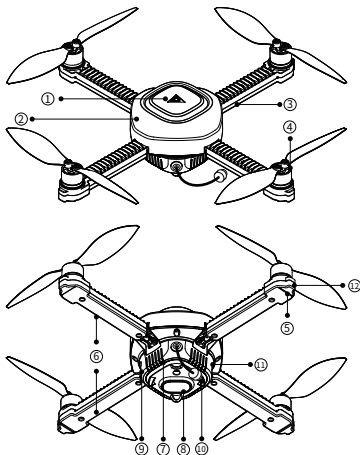


Airborne



① CZI LOGO

② Frame

③ Arm

④ Propeller

⑤ Motor

⑥ Arm Light

⑦ Frame Cooling Vents

⑧ Laser Optical Flow Module

⑨ Type-C Port

⑩ Tether Cable Port

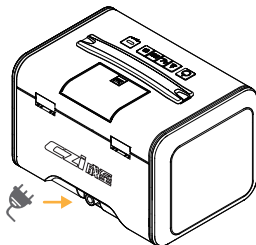
⑪ Reset Pinhole

⑫ Status Indicator

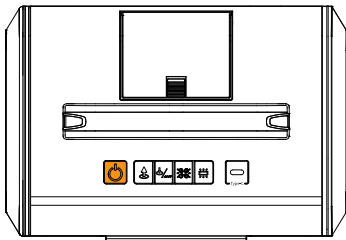
Usage Tutorial

Ground Station Control

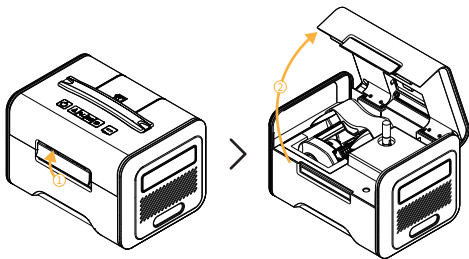
- 1.Connect power source.



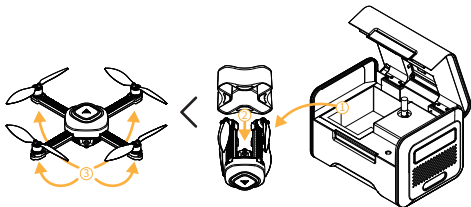
- 2.Press and hold the power button for 3 seconds to power on the device.



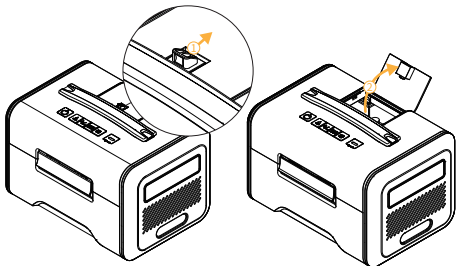
3. Open Ground Station cover.



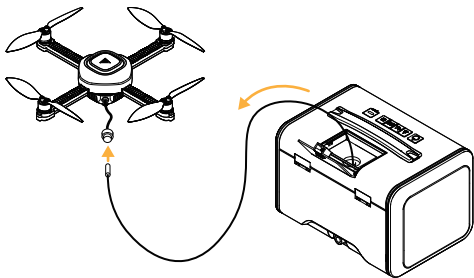
4. Remove Airborne unit from Ground Station and unfold.



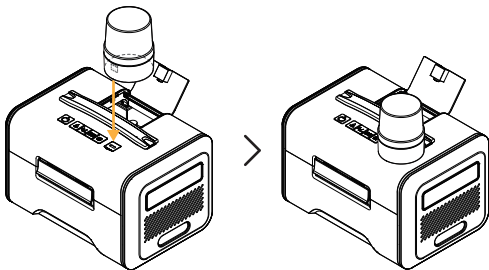
5. Press the clip to open Tether Cable Protective Flap.



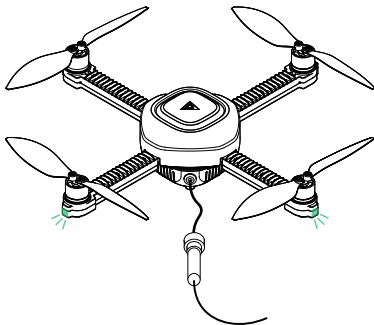
6. Pull the tether cable out until you reach the fluorescent marker indicator.



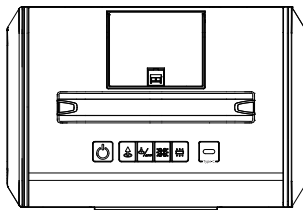
7.Connect RTK module.



8.Connect tether cable to Airborne unit.



9. Ground Station controls.



	Power Button	<p>Press and hold the power button to power on/off. After powering on, press the button twice to enter network configuration mode and use the app to connect.</p> <p>Power indicator status: Green: battery > 70%; Blue: battery > 40%; Red: low battery</p> <p>The power indicator flashes while charging.</p>
	Take off Button	<p>Press and hold the takeoff button for airborne unit one-touch takeoff. The lights will flash.</p>
	Landing / Tether Recovery Button	<p>Press and hold the landing button for airborne unit one-touch landing and tether recovery. The lights will flash.</p> <p>Press and hold the landing button to recover the tether.</p>
	Airborne Light Control	<p>Long press to turn light on/off</p> <p>Short press to adjust brightness</p>
	Ground Station Light Control	<p>Long press to turn light on/off</p> <p>Short press to adjust brightness</p>