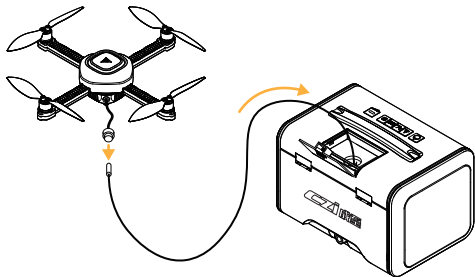
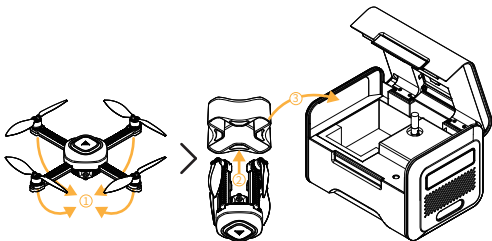


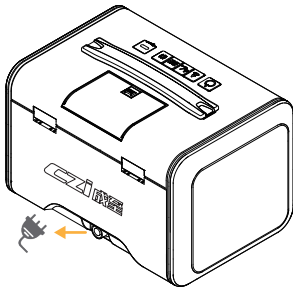
10. 拔掉天空端系留线, 自动收线。



11. 将天空端放入保护套筒, 放入地面端, 关闭上盖。



12. 长按关机，断开电源连接。

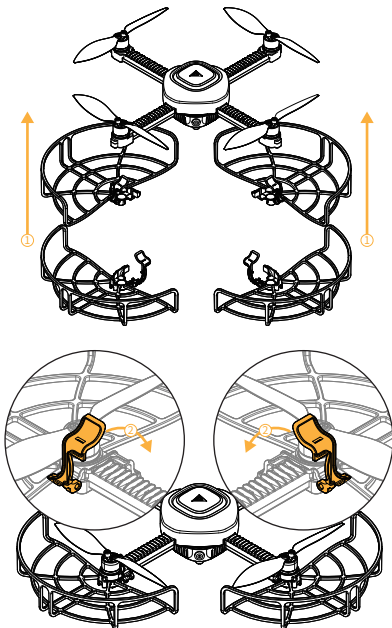


APP操控

请扫描下方二维码下载对应系统APP

● 桨叶保护罩安装教程

将桨叶保护罩如图放置，并锁紧卡扣。



产品维护

- 1、设备不使用时，请及时断开电源；
- 2、清洁设备前需把电源插头拔除；
- 3、请用干燥擦拭布擦拭表面，并且置于干燥阴凉处存放；
- 4、请及时清洁地面端、天空端散热孔，避免堵塞散热孔影响设备散热。

装箱清单

CZ10系留浮空灯整机	1台
电源适配器	1套
产品说明书(内含保修卡)	1份
桨叶替换装(正反各2pcs)	1套
桨叶保护罩	1套
RTK模块	1套

This device complies with part 15 of the FCC Rules. Operation is subject to the following two conditions: (1) This device may not cause harmful interference, and (2) this device must accept any interference received, including interference that may cause undesired operation.

Any Changes or modifications not expressly approved by the party responsible for compliance could void the user's authority to operate the equipment.

Note: This equipment has been tested and found to comply with the limits for a Class B digital device, pursuant to part 15 of the FCC Rules. These limits are designed to provide reasonable protection against harmful interference in a residential installation.

This equipment generates uses and can radiate radio frequency energy and, if not installed and used in accordance with the instructions, may cause harmful interference to radio communications. However, there is no guarantee that interference will not occur in a particular installation. If this equipment does cause harmful interference to radio or television reception, which can be determined by turning the equipment off and on, the user is encouraged to try to correct the interference by one or more of the following measures:

- Reorient or relocate the receiving antenna.
- Increase the separation between the equipment and receiver.
- Connect the equipment into an outlet on a circuit different from that to which the receiver is connected.
- Consult the dealer or an experienced radio/TV technician for help.
- This equipment complies with FCC radiation exposure limits set forth for an uncontrolled environment. This equipment should be installed and operated with minimum distance 20cm between the radiator & your body.

Important Notes

The copyright and intellectual property rights of this manual are owned by Guangzhou ChengZhi Intelligent Machinery Technology Co., Ltd. and its affiliates (collectively referred to as “CZI”). No individual or organization is permitted to reproduce, scan, store, distribute, reprint, sell, transfer, modify, or utilize any portion of this manual—either in whole or in part—without prior written authorization from CZI. This manual is intended solely for the operation and maintenance of this product and must not be used for any other purpose.

Symbol Legend



Important Precautions



Operating & Usage Guidelines

Safety Precautions




Before operating this product, thoroughly read and comply with this manual. Use of this product shall be deemed as your acceptance of all terms and conditions associated with it. This product is not suitable for users aged 16 years or younger.

Operating Environment



1. Do not operate in extreme weather (e.g., strong winds >8m/s, rain, snow, lightning, or dense fog).
2. Do not use above 3,000 meters altitude.
3. Only operate between -10°C and 40°C.
4. Do not use on moving platforms or vehicles.
5. Avoid use in enclosed or indoor spaces.
6. Keep away from strong electromagnetic interference.
7. Avoid prolonged exposure to direct ultraviolet sunlight.

Operating Guidelines

-  1. Do not touch the rotating propellers with your hands or any objects to avoid personal injury or damage to the blades.
2. This product does not have obstacle avoidance capability. Keep a safe distance from other aircraft or obstacles to prevent collisions.
3. Do not pull the tether cable when the unit is powered off.
4. Do not step on or place heavy objects on the ground station to avoid structural damage.



Note:

Ensure that both firmware and mobile app are updated to the latest versions before use.

In the event of sudden bad weather, initiate return-to-home procedures immediately.

Initial Inspection

When unpacking the product for the first time:

- Check for any damage that may have occurred during shipping.
- Verify that all components and accessories are included.

If any issues are discovered, please contact CZI support immediately.

Before initial operation, disengage the USB-C port dust caps from both Airborne unit and Ground station.

Product Overview

The CZ10 Hover Light is a high-efficiency, lightweight illumination solution designed for diverse outdoor scenarios. When connected to a portable power supply or a vehicle's external power port, the system provides continuous, extended lighting.

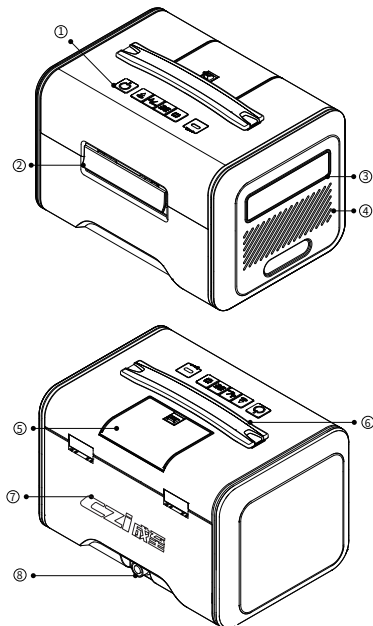
Weighing only 3.5kg (combined air and ground units), the CZ10 is easily carried and deployed by a single operator. The system is exceptionally user-friendly—requiring no formal training—and can be fully deployed from backpack to operation in just 3 minutes. Unlike traditional lighting drones, the CZ10 supports dual-mode operation (mobile app and ground station), offering fast and flexible control for field operations.

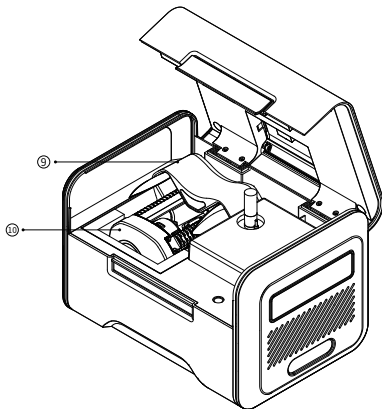
Product Specifications

Product Name	CZ10 Hover Light-Ground Station&Airborne Unit
Electrical interface	Aviation connector
Total System Weight	≤3500g
IP Rating	IP4X
Airborne unit	≤249g
Ground station	≤3200g
Airborne unit Deployment	273×273×61mm
Airborne unit Folding	117×117×127mm
Ground Station	250×173×165mm
Rated Airborne Light Power	≤100W
Max Arm Light Brightness	16000lm
Illumination Coverage (10m)	1300m ² (with 3 lx as the illumination boundary)
Ground Flashlight Power	20W
Lighting Modes	Ambient, Red/Blue Strobe, SOS
Arm Indicator Light	Dual-color (Red-Green) LED
Hovering Accuracy	Horizontal: ±0.1m Vertical: ±0.1m
Maximum Flight Altitude	10m
Maximum Wind Resistance	8m/s
Positioning System	RTK (BDS+GPS+Galileo+GLONASS+QZSS)
Operating Temperature	-10°C~+40°C
Maximum Operating Altitude	3000m
Control Methods	Dual-mode Control (APP/Ground Station)
Integrated Battery	2500mAh\14.8V
Power Adapter	InPut: 100-240V~50/60Hz 5.0A MAX OutPut: 48.0V/5.0A 240W

Appearance Description

Ground Station





① control panel

② Tether Cable Protective Flap

③ Carry Handle

④ Lamp Panel

⑤ Cooling Vents

⑥ Latch

⑦ CZI LOGO

⑧ Power Port

⑨ Storage Sleeve

⑩ Airborne