

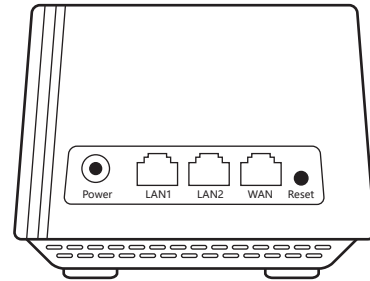
1		2		3		4		5			6						
								Remark		Description		Editor		Date			
A		封面				底面				A							
B		<div><div>WiFi App User Guide for</div><div>Fast Installation guide</div><div>Whole Home Mesh WiFi System</div><div>R6800U</div><div>HNK</div></div>				<div><div>Registered office: SHENZHEN ZK TECHNOLOGY CO., LTD</div><div>Shenzhen city Longgang District streets Qinglin road Shenzhen</div><div>city students (Longgang) Business Pa...</div><div>China 518172</div><div>Tech Support: Support@hnknet.com</div><div>Copyright Statement ©2019 Shenzhen ZK Technology Co., Ltd.</div><div>All rights reserved.</div><div>Disclaimer</div><div>Pictures, images and product specifications herein are for</div><div>references only. To improve internal design, operational function,</div><div>and/or reliability, ZK reserves the right to make changes to the</div><div>products without obligation to notify any person or organization</div><div>of such revisions or changes.</div></div>				B							
C												C					
D		<div>NOTES(技术要求):</div> <div>1.Dimension after folding(折叠后尺寸): 80*105mm.</div> <div>2.Print colour(印刷颜色): black printing(黑色印刷).</div> <div>3.Material(材质): 80g writing paper (80g书纸).</div> <div>4.Coating(表面处理): 无</div> <div>5.Binding process(装订工艺): saddle stitch(骑马钉).</div> <div>6.Output lpi(输出网线): 200 lpi.</div> <div>7.Tolerance(公差): L(长)*W(宽): ±1mm.</div> <div>8.Raw materials and the corresponding post processing should meet requirements defined in the ROHS and WEEE.</div> <div>(原材料及后处理工艺均能满足ROHS和WEEE的要求).</div>										D					
1		2		3		4		5			6						

DIM \ TOL±												CUSTOMER:		深圳市迈腾电子有限公司	
RANGE		C1	C2	C3	C4	TITLE:		MODEL:		PART NO.:		INTERLINK		SHENZHEN MTN ELECTRONICS CO.,LTD	
0~6		0.1	0.1	0.15	0.2	说明书		MT-WA1208AC							
6~30		0.2	0.3	0.4	0.5	UNIT'S		mm		VER:		A0		DRAW	
30~80		0.25	0.5	0.9	1.2	MAT'L		/		SCALE		1:1		CHECK	
80~180		0.3	0.8	1.2	1.5	FINISH		/		SHEET		1/1		APPD	
180~315		0.5	1.3	1.8	3									DATE:2019-10-30	
315~500		0.7	1.5	2.5	4										
500~800		0.9	1.8	3	5										
ANG.TOL±		0°~30°/0.1°		30°~60°/0.3°		60°~90°/0.5°									

Packing list

- Mesh x 3
- Lan Cable x 1
- Power Adapter x 3
- QIG x 1

Product Appearance



1 Download and Install HNK APP

Scan the QR code below to download and install the HNK APP on your phone

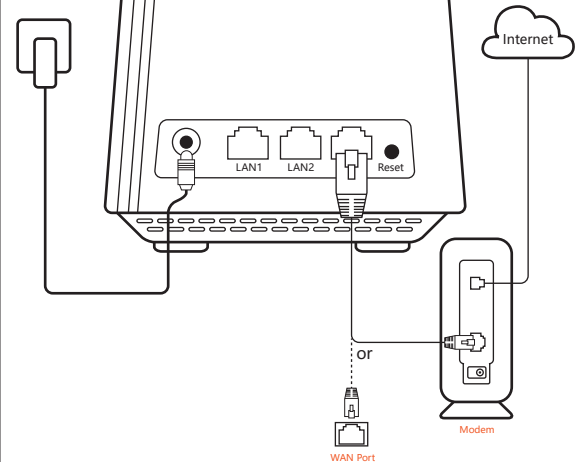


Scan the QR code to download
Or use the mobile browser and enter the url: <https://fir.im/mlsa>

1.0.0 (Build 1) - 50.73 MB
Updated on: 2019-12-03 17:06

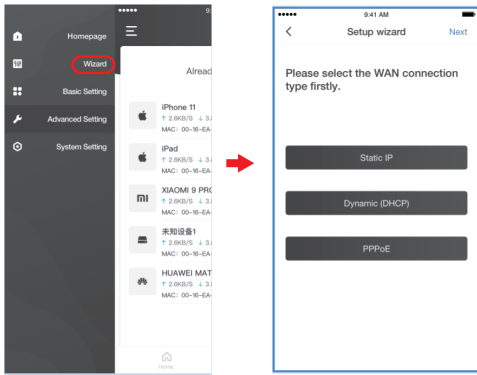
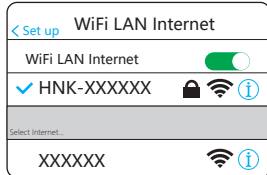
2 Setup the first node

1. Connect one end of the network cable to a modem or broadband network port, and the other end connects any WAN/LAN port.
2. Connect the node to power, and the indicator light is steady green. After about 40 seconds, the LED light flashes green and the system startup is complete.



3 Setup the first node WiFi connection.

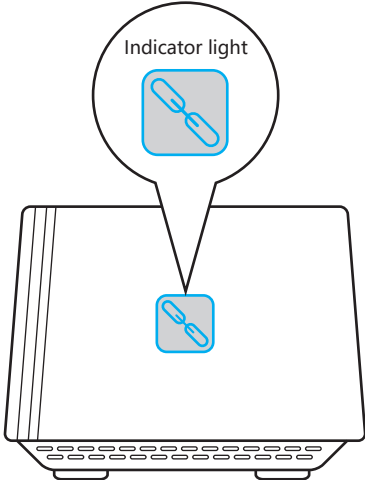
1. Connect the mobile with the first WiFi internet. WiFi Name, password can be found at the bottom sticker of the node.



Step One

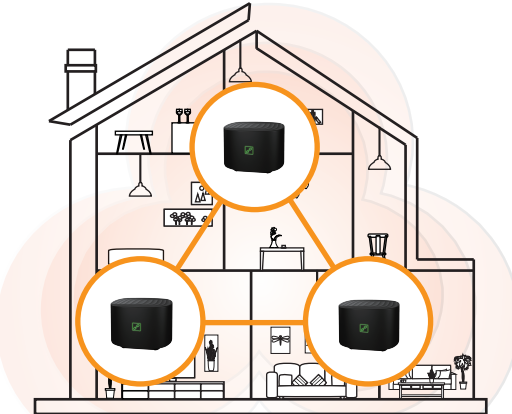
Step Two

2. Open HNK APP, and connect the first node to the internet according to the interface guide. When the mode LED is always blue on, the node connects with the internet successfully.



4 Setup the first node wireless connection

- Setup the first node wireless connection
1. For a better wireless Internet experience, please refer to the following suggestions to put other nodes in the proper position.
 - Do not exceed two walls between a node and another node
 - Keep away from microwave ovens, induction cookers, and refrigerators
 2. Power on the node, the indicator light is steady green, and the system finishes start after 40 seconds successfully. The indicator flashes green, and starts to look for another node to connect. Indicator light flashes green, and it starts to find another node to connect.



3. Continue to observe the indicator light until it changes from flashing green to the following state:

	Green always on	wireless connection good
	Green slow flash	wireless connection normal
	Green fast flash	wireless connection weak
	Red always on	wireless connection failure

4. If the node LED is not steady green on, please refer to suggestion places (first step of Step four). Replace the nodes for best wireless connection quality.

Finish installation

- Wired device internet connection: please connect with the LAN port of the node.
- Wireless device internet connection: please reconnect with new wireless internet (all nodes' WiFi name/-password are the same)
- If you want to remotely control the internet, please access by APP, and login by account to manage.

Common problem	
Why can't I connect to the node to manage it?	Please confirm that the mobile phone wifi is connected to the SSID of the device to be managed.
How to add multiple nodes	If the number of nodes in the network topology is less than 3, simply power on the device and the nodes will be added automatically; If the number of nodes in the network topology is greater than or equal to 3, follow the steps described in "Advanced Settings > > Add Nodes" to add nodes manually. You can add up to 5 nodes.
What does the device light color mean	Steady blue: The main device is connected to the Internet; Fast blue blinking (twice a second): the main device, no network cable is connected to the WAN port; Slow blinking blue (once every 2 seconds): the main device, the WAN port is connected to the network cable but the Internet is unreachable; Flashing red (2 times per second): slave device, not connected to the master device; Steady green: The slave device is connected to the master device and the signal from the master device is good. Fast green blinking (2 times per second): The slave device is connected to the master device but the signal from the master device is poor; Slow blinking green (once every 2 seconds): The slave device is connected to the master device but the signal from the master device is normal.

How to restore factory settings	Press and hold the reset button for more than 5 seconds, and let go after observing the constant red light
How to manage your device from your computer	The first step is to connect the computer to the device's wifi; The second step is to enter the domain name of the device in the browser and log in to the WEB interface for management.

LED Status Description

After power on, the indicator is steady green (about 40 seconds), indicating that the node is starting. After the startup is complete, the indicators are described in the following table.

Node type	Indicator status	Description
First node	Blue always on	Networking success
	Blue fast flash	The WAN port is not connected to a network cable
	Blue slow flash	The WAN port is connected to a network cable, the Internet is unreachable
Other nodes	Green always on	wireless connection good
	Green slow flash	wireless connection normal
	Red always on	wireless connection failure
	Green fast flash	wireless connection weak

Product warranty card

Thank you for purchasing HNK products, you will enjoy the following services when using HNK products.
I. Warranty commitment

Product type	Commitment policy	Service method
Molded case routers / switches, wireless signal extenders, network cards, PoE splitters, PoE power supplies, fiber optic transceivers, fiber optic modules, ADSL products, PON products, power line products, 3G / 4G products	one year warranty	Customer service
Wireless AP, iron shell router / switch, wireless controller	Two-year warranty	Customer service

Note:

The scope of warranty is limited to the product host. Power cords, various connecting cables and other accessories are not covered by the warranty. If these accessories have problems within 7 days after purchase, they can be replaced free of charge. If the product has performance problems within 15 days after purchase, and the appearance is not scratched, you can replace the new product directly at the place of purchase.

If the product has a performance problem during the warranty period, please contact XX first. Test: If the product is confirmed to be defective, you can contact the place of purchase to replace the repaired product of the same model or equivalent performance for free. Return it as is. If there are obvious scratches on the product shell, only free repair is allowed. The warranty period for external power supplies and wireless external antennas is three months. If the power supply has obvious hard object damage, cracks, broken legs, severe deformation, and the power cord is damaged, broken, bare cores, etc., it will not be replaced free of charge, and users can purchase it separately. For products that have been guaranteed by HNK, the original warranty period shall prevail.

2. The following conditions are not covered by the warranty

- Out of warranty.
- Disassembled or repaired by the customer without permission.
- Man-made damage, damaged and deformed.
- Installation and use in abnormal environments such as high temperature, high pressure and humidity cause failure.
- Damage caused by natural disasters such as lightning strikes, floods and earthquakes.

Explanation:

For products not covered by the warranty, our company can provide paid repair services. After paid repairs, the same performance problem will enjoy a free warranty period of three months from the date of repair.

3. Maintenance method

- Before sending your product for repair, please call HNK technical support hotline to confirm product failure.
- HNK products are nationwide. If the product you purchased has a hardware failure within the warranty scope, when the distributor cannot be contacted, you can obtain the warranty service at the XX service center with the purchase invoice of the product; if the purchase invoice cannot be provided, It will be postponed for two months as the start date of the warranty.

4.Other

- The above service commitments only apply to products sold by our company in China. For products that have agreed on after-sales service terms when they are sold, the contract confirmed by HNK shall prevail.
- Production date see product serial number: The first four digits of the serial number represent the year and month of the production date, for example 1901 represents January 19.

The right to interpret and modify this commitment belongs to SHENZHEN ZK TECHNOLOGY CO., LTD

Declaration of toxic and hazardous substances in electronic information products						
Part Name	Toxic and harmful substances or elements					
	(Pb)	(Hg)	(Cd)	(Cr(VI))	(PBB)	(PBB)
Structure	○	○	○	○	○	
Single board / circuit module	×	○	○	○	○	
Power Adapter	×	○	○	○	○	
Cable	○	○	○	○	○	
Annex	○	○	○	○	○	
<div><div><div>This form has been prepared in accordance with SJ / T 11364.</div><div>o: It means that the content of this hazardous substance in all homogeneous materials of this part is in GB / T 26572 The prescribed limits are required below.</div><div>X: Indicates that the content of the hazardous substance in at least one homogeneous material of the part exceeds GB / T 26572 stipulated the limit requirements. However, due to the limitation of the level of global technological development There is currently no mature alternative in the industry.</div></div><div><div>10</div><div>This environmentally friendly use period is only applicable when the product works under the conditions specified in the user manual</div></div></div>						

注意:
-The power socket shall be installed near the equipment and shall be easily accessible.
-Working temperature: 0 °C ~ 40 °C; Operating humidity: (10 ~ 90)% RH, non-condensing.



Registered office: SHENZHEN ZK TECHNOLOGY CO., LTD

Shenzhen city Longgang District streets Qinglin road Shenzhen

city students (Longgang) Business Pa...

China 518172

Tech Support: Support@hnknet.com

Copyright Statement ©2019 Shenzhen ZK Technology Co., Ltd.

All rights reserved.

Disclaimer

Pictures, images and product specifications herein are for references only. To improve internal design, operational function, and/or reliability, ZK reserves the right to make changes to the products without obligation to notify any person or organization of such revisions or changes.

WiFi App User Guide for Fast Installation guide

Whole Home Mesh WiFi System R6800U

HNK

FCC WARNING

This device complies with part 15 of the FCC Rules. Operation is subject to the following two conditions: (1) this device may not cause harmful interference, and (2) this device must accept any interference received, including interference that may cause undesired operation.

Any changes or modifications not expressly approved by the party responsible for compliance could void the user's authority to operate the equipment.

NOTE: This equipment has been tested and found to comply with the limits for a Class B digital device, pursuant to Part 15 of the FCC Rules. These limits are designed to provide reasonable protection against harmful interference in a residential installation. This equipment generates, uses and can radiate radio frequency energy and, if not installed and used in accordance with the instructions, may cause harmful interference to radio communications. However, there is no guarantee that interference will not occur in a particular installation. If this equipment does cause harmful interference to radio or television reception, which can be determined by turning the equipment off and on, the user is encouraged to try to correct the interference by one or more of the following measures:

- Reorient or relocate the receiving antenna.
- Increase the separation between the equipment and receiver.
- Connect the equipment into an outlet on a circuit different from that to which the receiver is connected.
- Consult the dealer or an experienced radio/TV technician for help.

To maintain compliance with FCC's RF Exposure guidelines, This equipment should be installed and operated with minimum distance between 20cm the radiator your body: Use only the supplied antenna.

The use of the 5150 – 5250 MHz band is restricted to indoor use only. This restriction will be applied in all member states.