

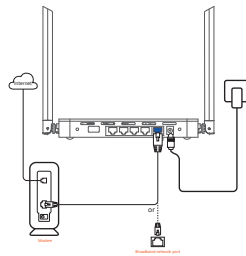
1		2		3		4		5		6																																																								
				Remark		Description		Editor		Date																																																								
封面				底面																																																														
<div><div>Router</div><div>Fast Installation guide</div><div>AC1200 Gigabit Port Router RM2500</div><div>HNK</div></div>				<div><div>Registered office: SHENZHEN ZK TECHNOLOGY CO., LTD Shenzhen city Longgang District streets Qinglin road Shenzhen city students (Longgang) Business Pa... China 518172 Tech Support: Support@hnknet.com</div><div>Copyright©2019SHENZHEN ZK TECHNOLOGY CO., LTD. All rights reserved. The content of this document may be updated from time to time due to product version upgrades or other reasons.</div></div>																																																														
NOTES(技术要求): 1.Dimension after folding(折叠后尺寸): 80*105mm. 2.Print colour(印刷颜色): black printing(彩色印刷). 3.Material(材质): 80g writing paper (80g书纸). 4.Coating(表面处理): 过光胶 5.Binding process(装订工艺): saddle stitch(骑马钉). 6.Output Ipi(输出网线): 200 Ipi. 7.Tolerance(公差): L(长)*W(宽):±1mm. 8.Raw materials and the corresponding post processing should meet requirements defined in the ROHS and WEEE. (原材料及后处理工艺均能满足ROHS和WEEE的要求).				<table><tr><td>TOL±</td><td></td><td></td><td></td><td></td></tr><tr><td>DIM</td><td></td><td></td><td></td><td></td></tr><tr><td>RANGE</td><td>C1</td><td>C2</td><td>C3</td><td>C4</td></tr><tr><td>0~6</td><td>0.1</td><td>0.1</td><td>0.15</td><td>0.2</td></tr><tr><td>6~30</td><td>0.2</td><td>0.3</td><td>0.4</td><td>0.5</td></tr><tr><td>30~80</td><td>0.25</td><td>0.5</td><td>0.9</td><td>1.2</td></tr><tr><td>80~180</td><td>0.3</td><td>0.8</td><td>1.2</td><td>1.5</td></tr><tr><td>180~315</td><td>0.5</td><td>1.3</td><td>1.8</td><td>3</td></tr><tr><td>315~500</td><td>0.7</td><td>1.5</td><td>2.5</td><td>4</td></tr><tr><td>500~800</td><td>0.9</td><td>1.8</td><td>3</td><td>5</td></tr><tr><td>ANG.TOL±</td><td>0°~30°/0.1°</td><td>30°~60°/0.3°</td><td colspan="2">60°~90°/0.5°</td></tr></table>		TOL±					DIM					RANGE	C1	C2	C3	C4	0~6	0.1	0.1	0.15	0.2	6~30	0.2	0.3	0.4	0.5	30~80	0.25	0.5	0.9	1.2	80~180	0.3	0.8	1.2	1.5	180~315	0.5	1.3	1.8	3	315~500	0.7	1.5	2.5	4	500~800	0.9	1.8	3	5	ANG.TOL±	0°~30°/0.1°	30°~60°/0.3°	60°~90°/0.5°				CUSTOMER: INTERLINK		MTN® 深圳市迈腾电子有限公司 www.mtn.cn SHENZHEN MTN ELECTRONICS CO.,LTD	
TOL±																																																																		
DIM																																																																		
RANGE	C1	C2	C3	C4																																																														
0~6	0.1	0.1	0.15	0.2																																																														
6~30	0.2	0.3	0.4	0.5																																																														
30~80	0.25	0.5	0.9	1.2																																																														
80~180	0.3	0.8	1.2	1.5																																																														
180~315	0.5	1.3	1.8	3																																																														
315~500	0.7	1.5	2.5	4																																																														
500~800	0.9	1.8	3	5																																																														
ANG.TOL±	0°~30°/0.1°	30°~60°/0.3°	60°~90°/0.5°																																																															
TITLE: 说明书		MODEL: MT-WA1208AC		PART NO.:		UNIT'S mm		VER: A0		DRAW 廖品钦		DATE:2019-10-30																																																						
MAT'L /		SCALE 1:1		CHECK		FINISH /		SHEET 1/1		APPD		N/A																																																						

- Router host x 1
- Network cable x 1
- Power adapter x 1
- Installation manual x 1

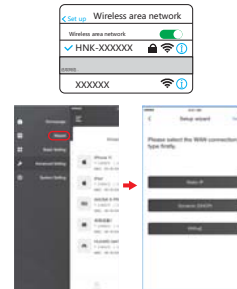
Scan the QR code below to download and install the HNK App on your phone.



1. Power on the router and connect the network cable.
2. Connect one end of the network cable to the blue WAN port of the router. The other end is connected to the network cable interface in the home, such as residential broadband or the broadband cat and fiber cat prepared by the operator for you.



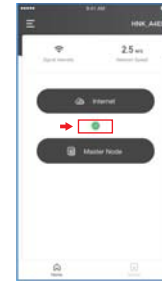
1. The phone is connected to the wireless network of the first node. The wireless name and password can be viewed on the sticker on the bottom of the node.



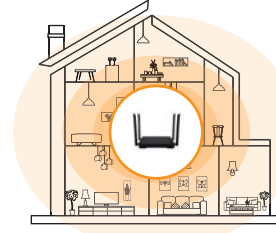
First step

Second step

2. Open HNK App and follow the interface operation guide to connect the router to the Internet. If you see a green tick on the App main interface, it means that the internet is reachable.



1. For a better wireless Internet experience, please refer to the following suggestions to place the router in a suitable location.
 - No more than two walls between the user and the router
 - Keep away from microwave ovens, induction cookers, and refrigerators
 - Elevated from the ground and less obstructions around
2. Connect the router to the power supply; the power light is blue and the system starts to complete after 40 seconds, the blue indicator color of the Internet flashes, and the user starts to connect to the Internet.



Setup is complete.

- Wired device for Internet access: Please connect to the LAN port of the node
- Wireless Internet: Please reconnect to a new wireless network
- If you want to manage the network remotely, please enter the app, log in to your account, and manage

FCC WARNING

This device complies with part 15 of the FCC Rules. Operation is subject to the following two conditions: (1) this device may not cause harmful interference, and (2) this device must accept any interference received, including interference that may cause undesired operation.

Any changes or modifications not expressly approved by the party responsible for compliance could void the user's authority to operate the equipment.

NOTE: This equipment has been tested and found to comply with the limits for a Class B digital device, pursuant to Part 15 of the FCC Rules. These limits are designed to provide reasonable protection against harmful interference in a residential installation. This equipment generates, uses and can radiate radio frequency energy and, if not installed and used in accordance with the instructions, may cause harmful interference to radio communications. However, there is no guarantee that interference will not occur in a particular installation. If this equipment does cause harmful interference to radio or television reception, which can be determined by turning the equipment off and on, the user is encouraged to try to correct the interference by one or more of the following measures:

- Reorient or relocate the receiving antenna.
- Increase the separation between the equipment and receiver.
- Connect the equipment into an outlet on a circuit different from that to which the receiver is connected.
- Consult the dealer or an experienced radio/TV technician for help.

To maintain compliance with FCC's RF Exposure guidelines, This equipment should be installed and operated with minimum distance between 20cm the radiator your body: Use only the supplied antenna.

The use of the 5150 – 5250 MHz band is restricted to indoor use only. This restriction will be applied in all member states.