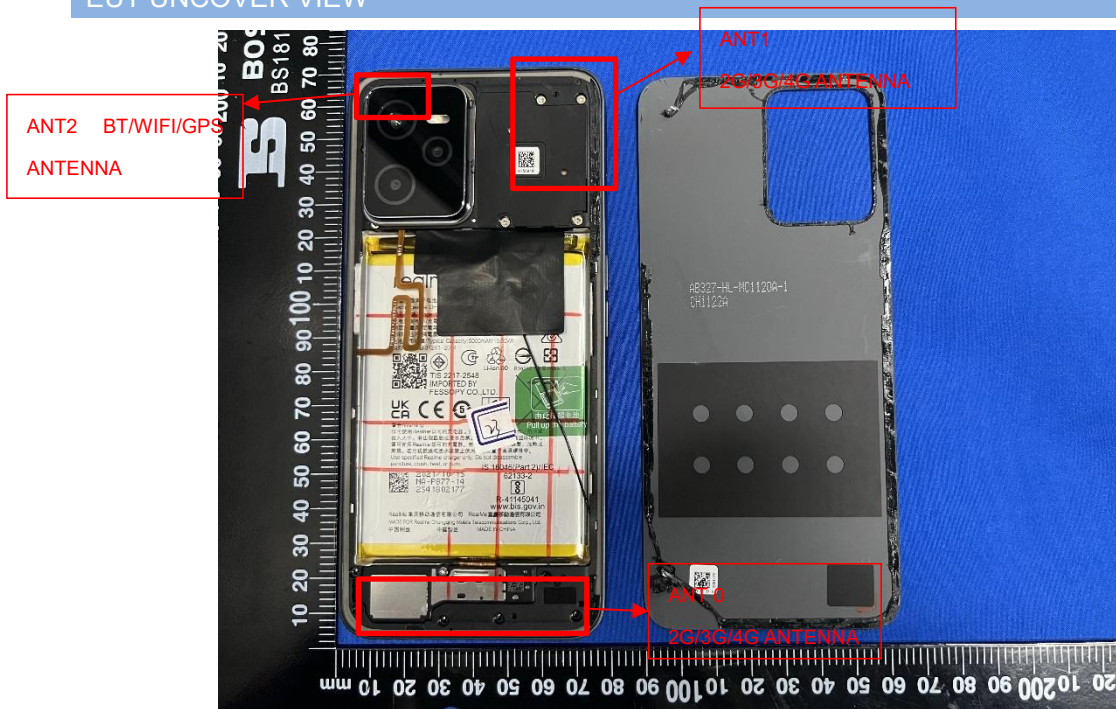
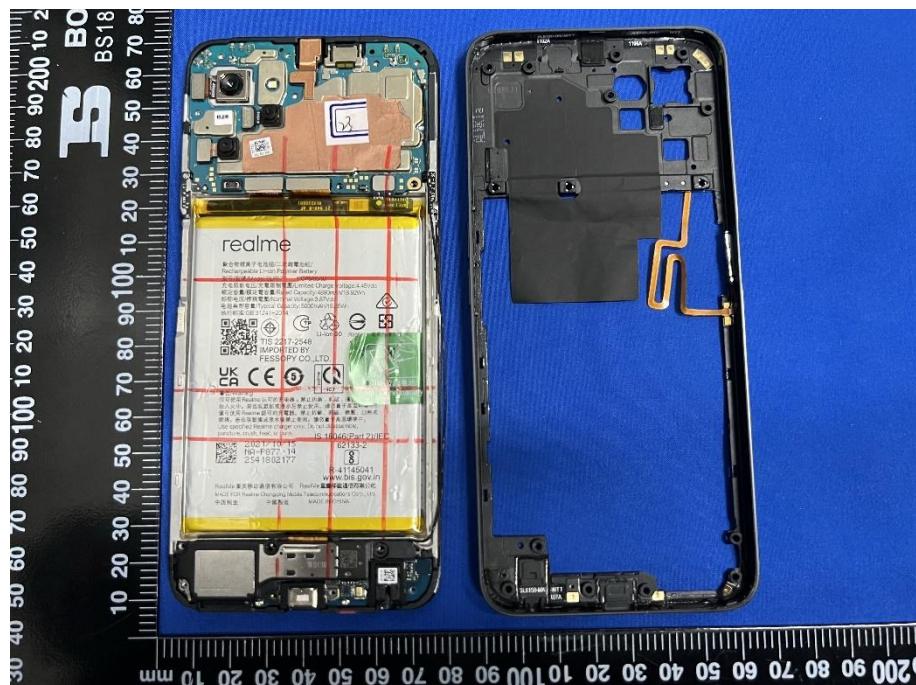


EUT INTERNAL PHOTOS

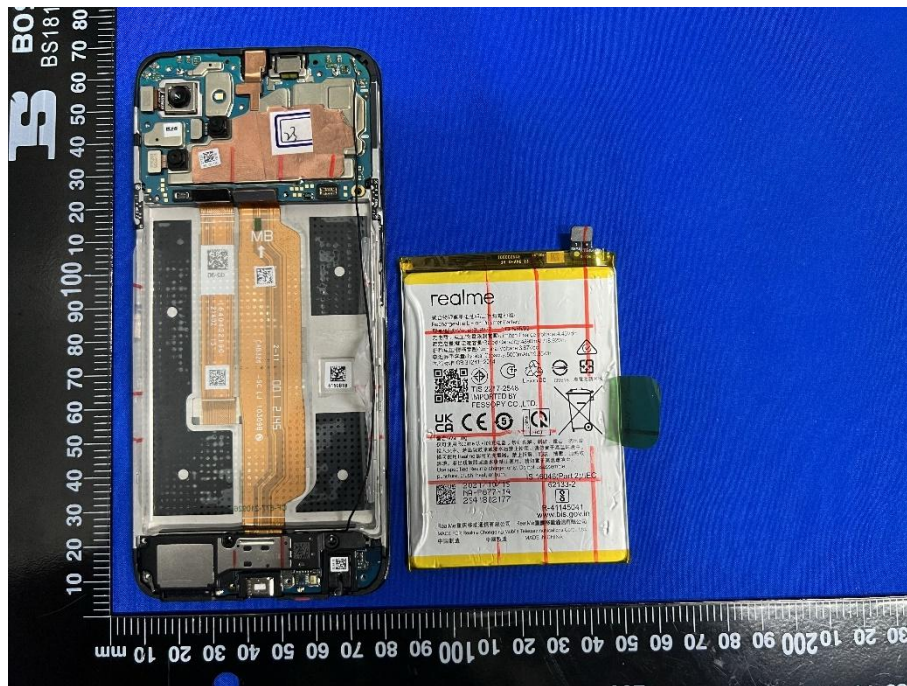
EUT UNCOVER VIEW



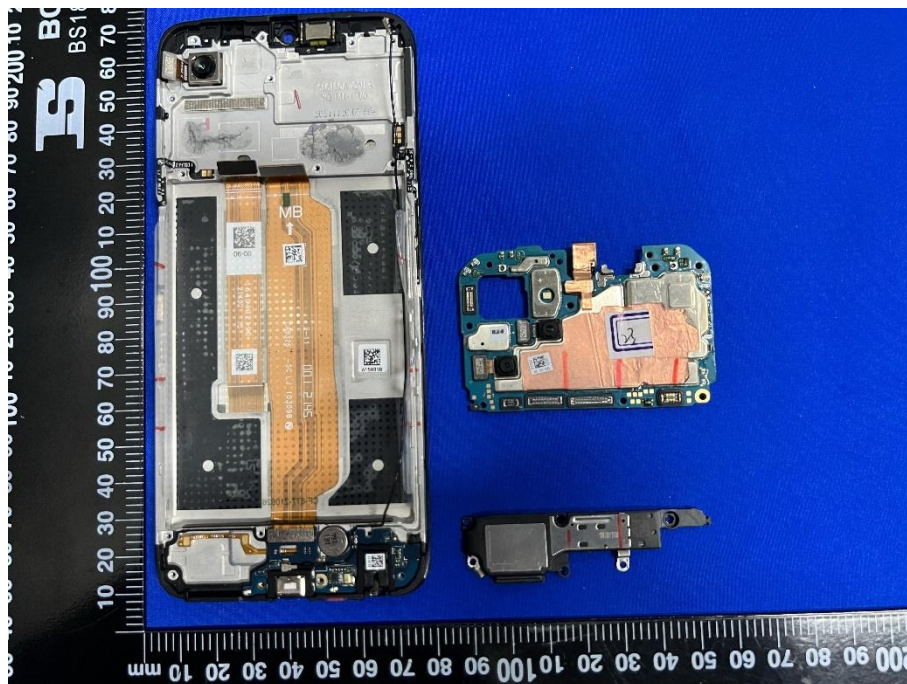
EUT UNCOVER VIEW



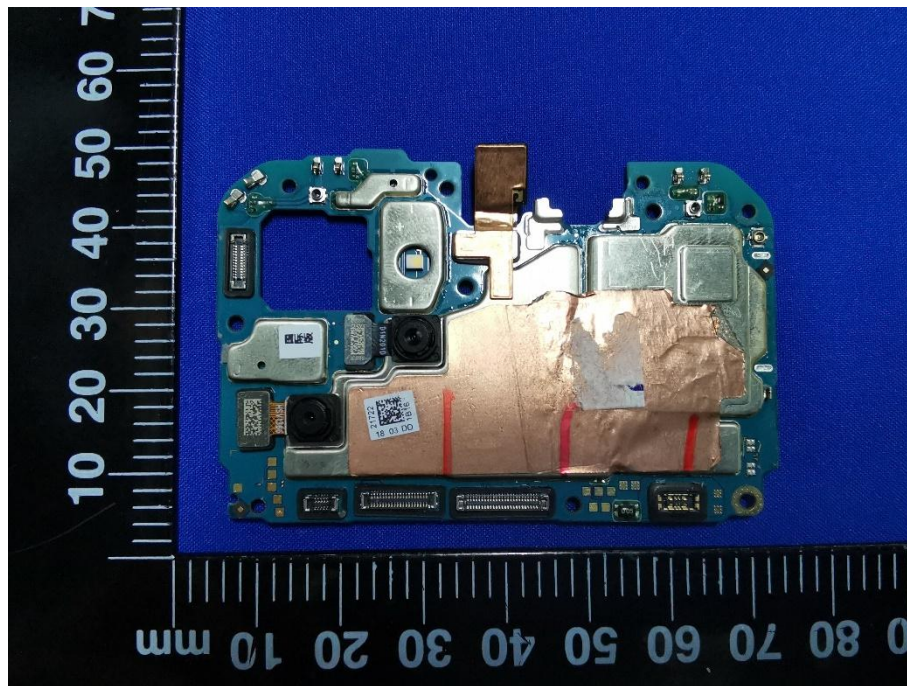
EUT UNCOVER VIEW



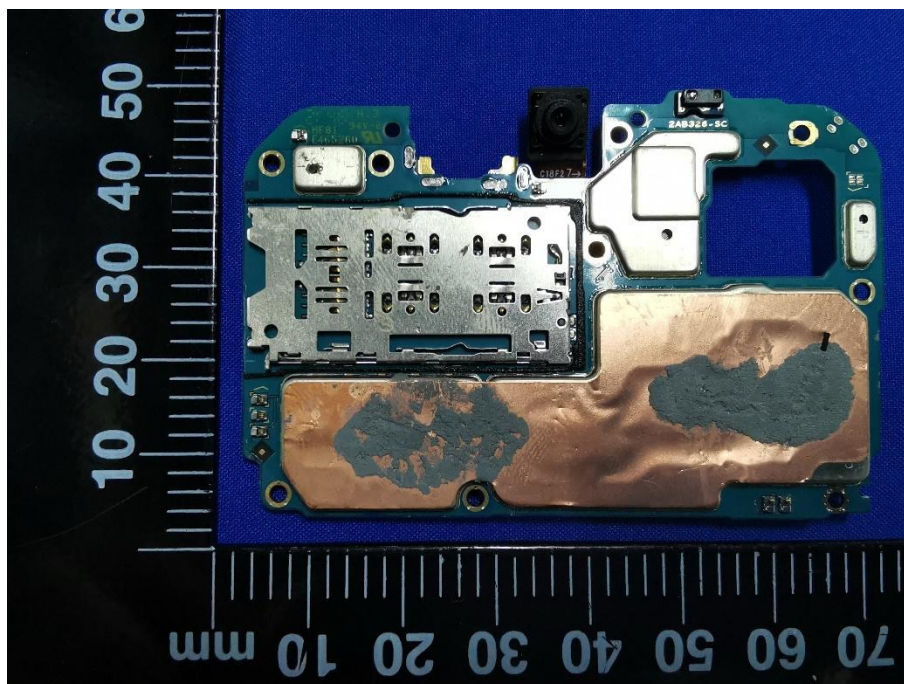
EUT UNCOVER VIEW



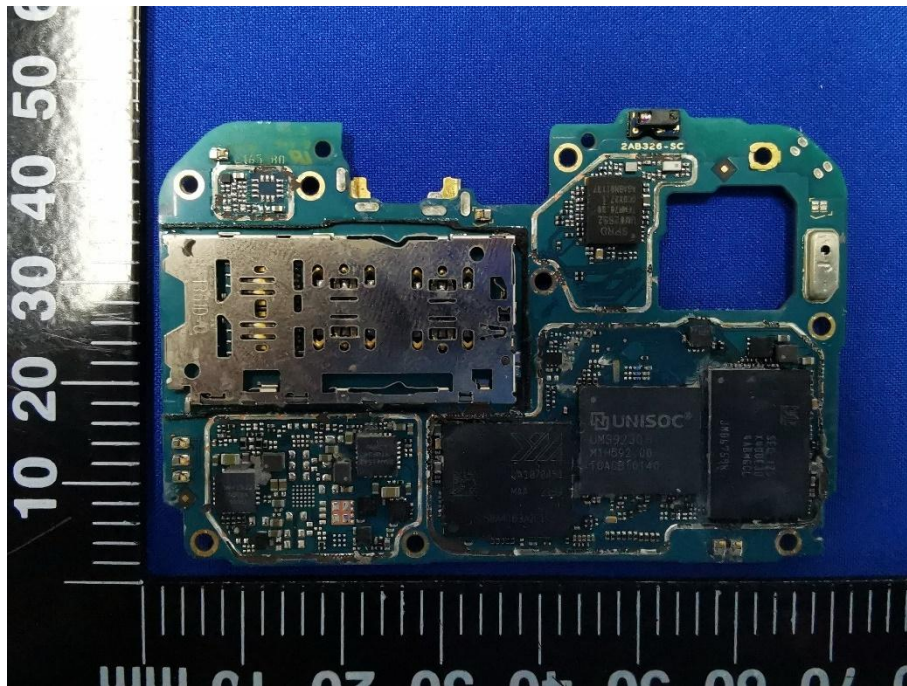
MAIN BOARD TOP VIEW (WITH SHIELDING)



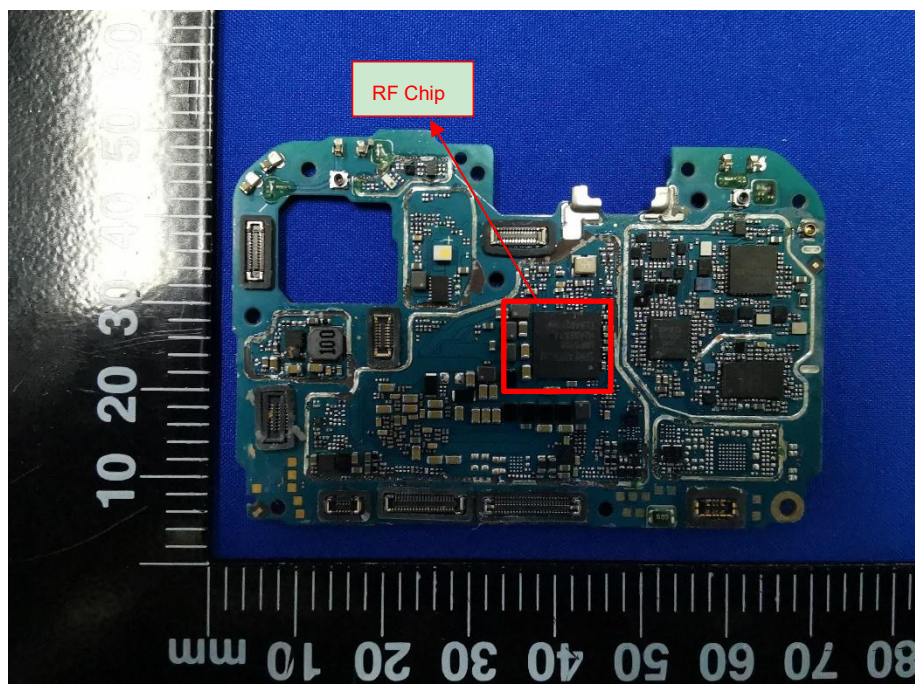
MAIN BOARD REAR VIEW (WITH SHIELDING)



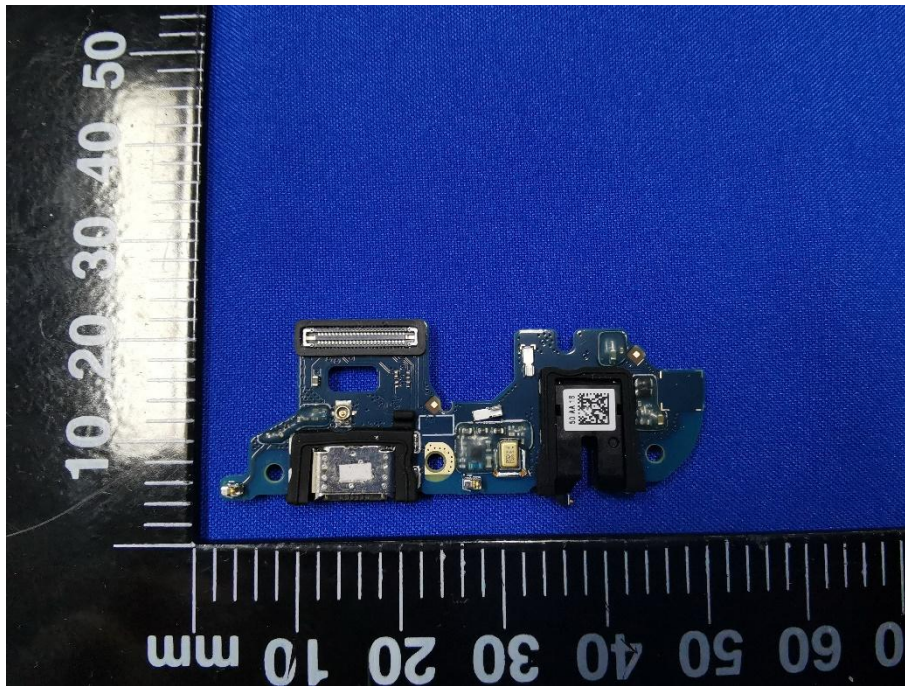
MAIN BOARD TOP VIEW (WITHOUT SHIELDING)



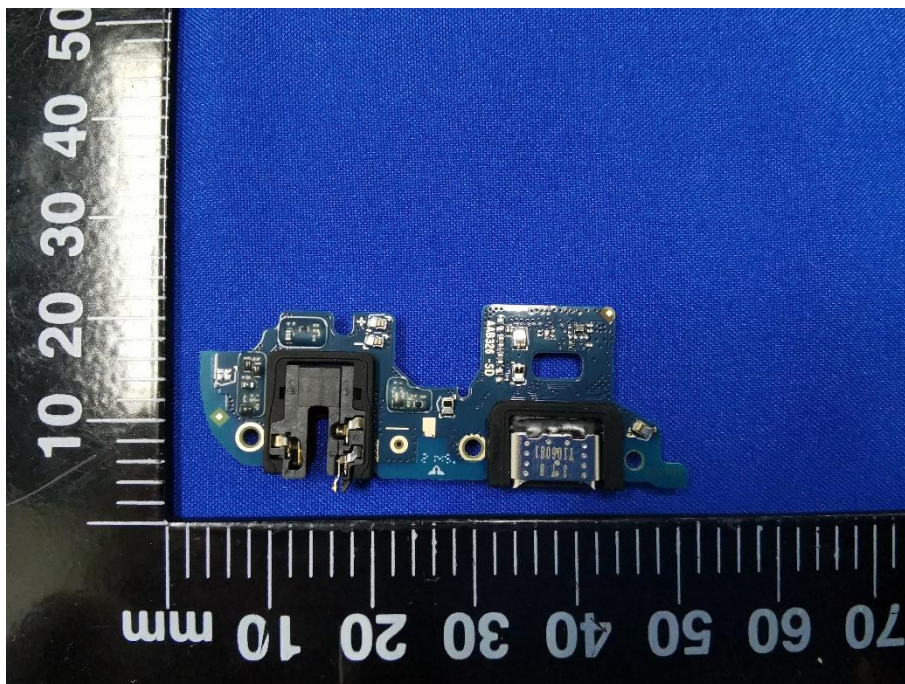
MAIN BOARD REAR VIEW (WITHOUT SHIELDING)



SUB BOARD TOP VIEW



SUB BOARD REAR VIEW



10000010
08 0-AN 1-01

realme

聚合物锂离子电池/二次锂离子电池
Rechargeable Lithion Polymer Battery

型号: R5 Pro
充电限制电压/充电限制电压 Limited Charge Voltage: 4.35Vdc
额定容量/额定容量 Rated Capacity: 4800mAh/18.92Wh
标称电压/标称电压 Nominal Voltage: 3.87Vdc
电池典型容量/Typical Capacity: 5000mAh/19.15Wh
执行标准 GB 31241-2019

TIS 2217-2548
IMPORTED BY
FESSOPY CO., LTD.

UK CE S

警告
只可使用 Realme 认可的充电器。禁止拆解、刺破、撞击、挤压或投入水中。禁止短路或浸水后继续使用。请勿置于高温环境中。请勿使用 Realme 认可的充电器。禁止拆解、刺破、撞击、加热或燃烧。若出现膨胀或变形请立即停止使用。请勿丢弃或焚烧。
Use specified Realme charger only. Do not disassemble, puncture, crush, heat, or burn.

IS 18046 (Part 2) / IEC 62133-2

2021.10.13
NA-P877-14
2541802177

R-41145041
www.bis.gov.in

Realme 重庆移动通信有限公司 Realme 重庆移动通信有限公司
MADE FOR Realme Chongqing Mobile Telecommunications Co., Ltd.
中国制造 中国製造 MADE IN CHINA