

ROOMBANKER

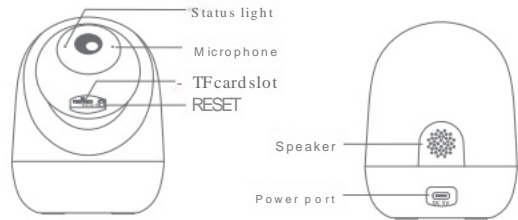
Indoor IPC

RBVD-IC1- M4 (US)



Quick Start Guide

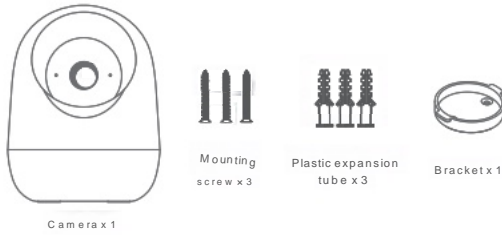
Appearance



Name	Description
Power supply	DC 5V/1A
Status light	Solid red Network malfunction Blinking red slowly: Waiting for network connection Blinking red slowly: Connecting the network Solid blue: Functioning properly
TF card slot	TF card storage (up to 256GB)
RESET	Press and hold for 5 seconds to reset the device (all settings will be restored to factory defaults)

· 01 ·

Packaging List



Camera x 1



QSG x 1

Power Adapter x 1

Type-C x 1

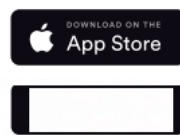
· 02 ·

Guidance on setting the network

*RBLink App Installation:



App Download



· 03 ·

Set up router

The device supports 2.4GHz & 5GHz Wi-Fi.

Ensure you have the SSID and password.



Note:

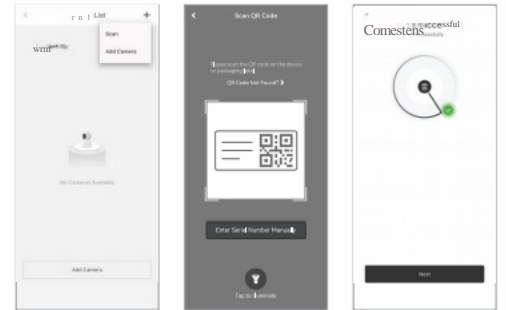
The length of the Wi-Fi SSID and password should not exceed 24 characters. If your device has trouble connecting to the Wi-Fi network or if you wish to switch networks, press and hold the RESET button for 5 seconds to reset the device.

· 04 ·

Add Indoor Camera

Add Indoor Camera:

- 1 Plug in the cable to power up the Camera. Wait a moment until the red indicator starts flashing.
- 2 Click '+' -> Scan' to add Camera by scanning the QR code.
- 3 Connect to the internet via Wi-Fi, the blue indicator turns on when the connection is successful.



· 05 ·

Installation Instruction

1 TF card installation (optional)

- a. Push the camera upwards to reveal the TF card slot.



- b. Insert the TF card (sold separately) into the TF card slot.



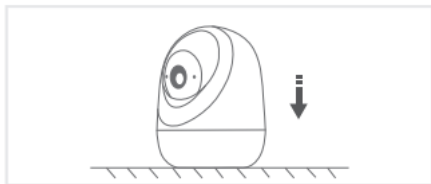
· 06 ·

Installation Instruction

2 Installation

· Method 1

Place the camera on a horizontal surface where Wi-Fi signal is strong.



· Method 2

Install the device to ceiling.

Note: Make sure the wall is strong enough to withstand 3 times the weight of the device.

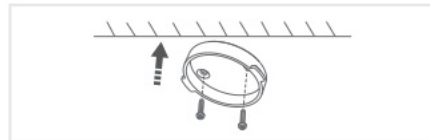
Do not stick the adhesive tape on the finished wall's.

· 07 ·

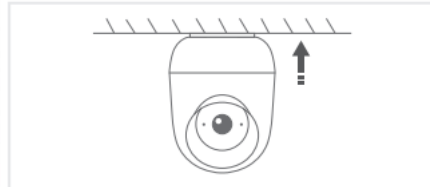
Installation Instruction

- a. Pick a clean and flat surface.

- b. Fix the included mounting bracket to the clean surface.



- c. Insert the camera to the bracket.



· 08 ·

Device specifications

Feature	
Pxel	4 million pixels
Effective Pixels	2560(H) × 1440(V)
Lens & FOV (Horizontal / Vertical / Diagonal)	85° / 45° / 95°
Pan / Tilt	Pan: 0° ~ 350°, Tilt: 50° ~ 45°
IR Distance	Night visibility up to 10m
Voice Type	Two-way audio
Monitoring Area Surveillance	Support
Mobile Phone OS	iOS 9 or later, Android 5 or later
General	
Storage	TF card (Up to 256GB)
Operation temperature	-20°C to 50°C
Power Supply	DC 5V/1A (Type-C)
Power Consumption	Upto 4.5W
Dimensions	82x106mm
Net Weight	188g

· 09 ·

FCC Statement

This device complies with part 15 of the FCC Rules. Operation is subject to the following two conditions:

(1) This device may not cause harmful interference.

(2) This device must accept any interference received, including interference that may cause undesired operation.

This equipment has been tested and found to comply with the limits for a Class B digital device, pursuant to part 15 of the FCC Rules. These limits are designed to provide reasonable protection against harmful interference in a residential installation.

This equipment generates, uses, and can radiate radio frequency energy. If not installed and used in accordance with the instructions, it may cause harmful interference to radio communications. However, there is no guarantee that interference will not occur in a particular installation. If this equipment does cause harmful interference to radio or television reception, which can be determined by turning the equipment off and on, the user is encouraged to try to correct the interference by one or more of the following measures:

- Reorient or relocate the receiving antenna.
- Increase the separation between the equipment and receiver.
- Connect the equipment into an outlet on a circuit different from that to which the receiver is connected.
- Consult the dealer or an experienced radio/TV technician for help.

Caution: Any changes or modifications to this device not explicitly approved by manufacturer could void your authority to operate this equipment. This equipment complies with FCC radiation exposure limits set forth for an uncontrolled environment. This equipment should be installed and operated with minimum distance 20cm between the radiator and your body.

· 10 ·



English: Scan for Setup and Installation Guide.

Français: Scannez le guide de configuration et d'installation.

Español: Escanee la guía de configuración e instalación.

Italiano: Scansione della guida d'installazione e configurazione.

Português (Brasil): Digitalize o guia de configuração e instalação.

Deutsch: Scannen Sie für das Einrichtungs- und Installationshandbuch.

Türkçe: Kurulum ve Yükleme kılavuzuna bakın.

Product name: Indoor IPC
Manufacturer: Hangzhou RoomBanker Technology Co., Ltd.

Address: 11F Building D, Huanglong International Center, Hangzhou, Zhejiang, China
Origin: No. 640, Fengqing Street, Moganshan Economic Development Zone, Deqing County, Zhejiang Province

http://www.roombanker.com