

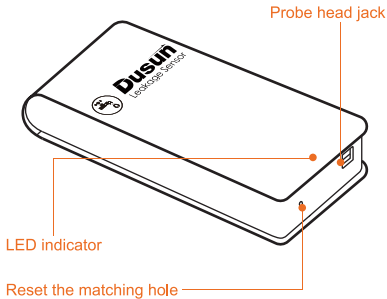
# Instruction Manual

## Product Description

The Dusun water immersion sensor utilizes the conductivity of the water to cause the two probes to form a pathway that alerts.

Low power, tool-free installation, ready to use.

This product is for indoor use only, you need to connect to the gateway for intelligent operation.

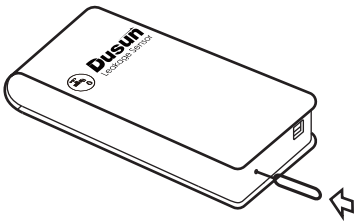


## Device Access

- 1 The gateway is powered on, open the Tuya smart app.
- 2 Select the gateway to connect to, click Add Sub-Device on the device page, follow the APP prompts, until the APP prompts to add successfully.

## Device Pairing Operation

Unpaired device, poke the paired hole, the indicator light flashes, and the device enters the pairing state.



The device that has been successfully paired, the long stamp is paired with the hole for 8s, and the device releases the current pairing relationship and re-enters the pairing state.

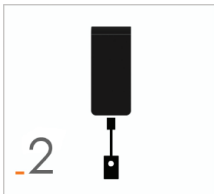
If the addition fails, please move the sensor closer to the gateway and try again.

## Device Installation

The product is used for the first time, the matching button battery is installed, and the double-sided adhesive behind the back is removed.

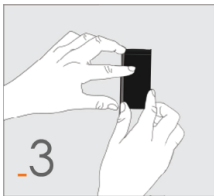


Insert the probe into the body of the product.

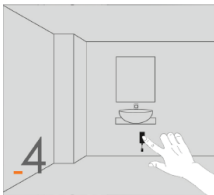




Please avoid falling when installing, and it is easy to damage the sensor body.



Install the probe in the position where the water level needs to be tested with screws or 3M double-sided tape. Such as kitchen, bathroom.



## Basic Parameters

Battery model: CR2032

Wireless connection: Zigbee greenpower

Working temperature:  $-10^{\circ}\text{C} \sim +55^{\circ}\text{C}$

Working humidity: 5%~95% (no icing, condensation)

## FCC Statement

Any Changes or modifications not expressly approved by the party responsible for compliance could void the user's authority to operate the equipment.

This device complies with part 15 of the FCC Rules. Operation is subject to the following two conditions:

- (1) This device may not cause harmful interference, and
- (2) This device must accept any interference received, including interference that may cause undesired operation.

## FCC Radiation Exposure Statement:

This equipment complies with FCC radiation exposure limits set forth for an uncontrolled environment. This equipment should be installed and operated with minimum distance 20cm between the radiator& your body.