

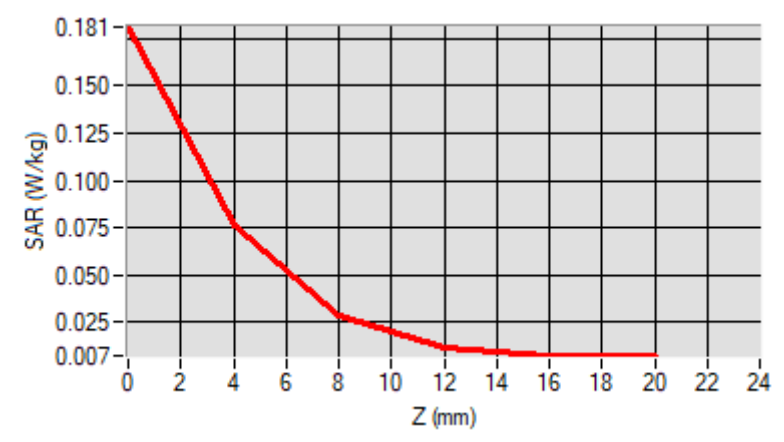
Maximum location: X=-9.00, Y=-7.00

D. SAR 1g & 10g

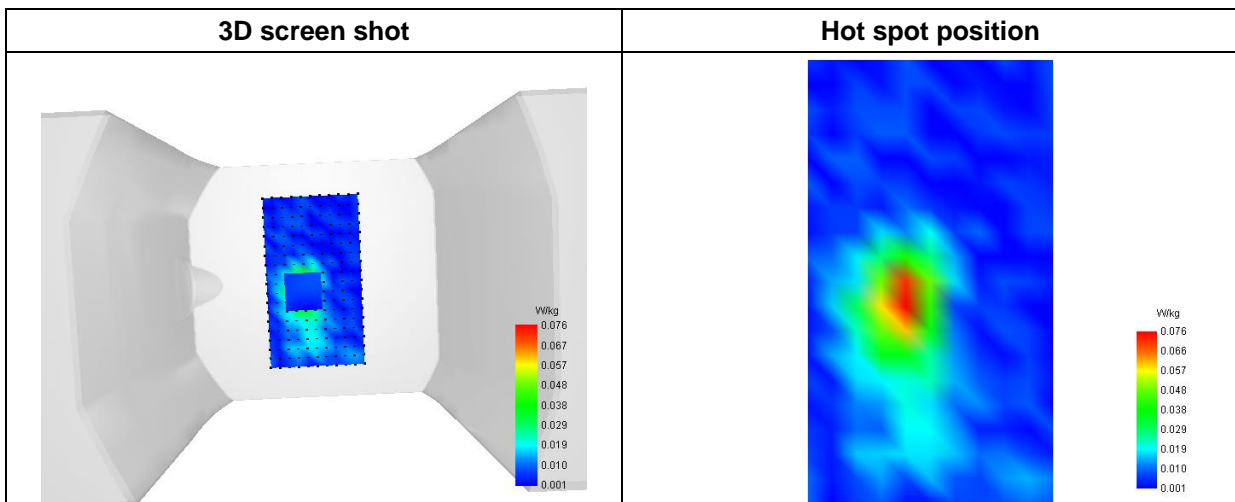
SAR 10g (W/Kg)	0.030265
SAR 1g (W/Kg)	0.071584

E. Z Axis Scan

Z (mm)	0.00	4.00	8.00	12.00	16.00
SAR (W/Kg)	0.1812	0.0761	0.0287	0.0118	0.0076



F. 3D Image



MEASUREMENT 24

Type: Phone measurement (Complete)

Date of measurement: 2023-08-18

Measurement duration: 12 minutes 3 seconds

E-field Probe: SSE2 - SN 18/21 EPGO356; ConvF: 2.22; Calibrated: 2023-07-07

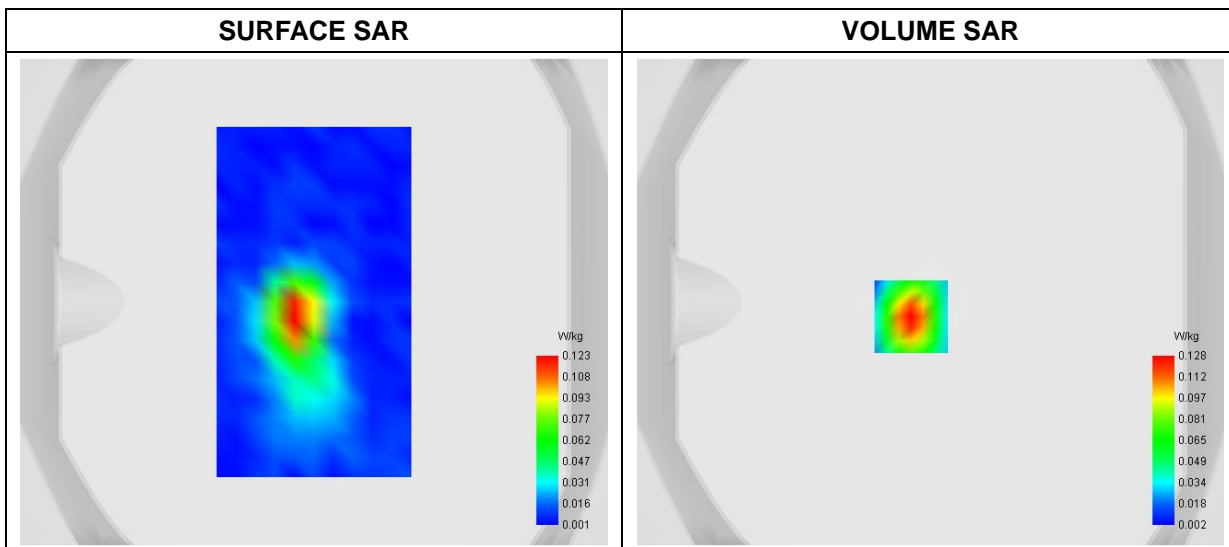
A. Experimental conditions

Area Scan	dx=8mm dy=8mm
Zoom Scan	dx=5mm dy=5mm dz=4mm
Phantom	Flat Plane
Device Position	Back
Band	DC_5A_n41A
Channels	DFT-s-OFDM QPSK, 100MHz, 1RB, Low
Signal	Duty Cycle 1:1

B. SAR Measurement Results

Frequency (MHz)	2593.000000
Relative Permittivity (real part)	40.252874
Conductivity (S/m)	1.932264
Power Variation (%)	1.462004
Ambient Temperature	23.1
Liquid Temperature	23.1

C. SAR Surface and Volume



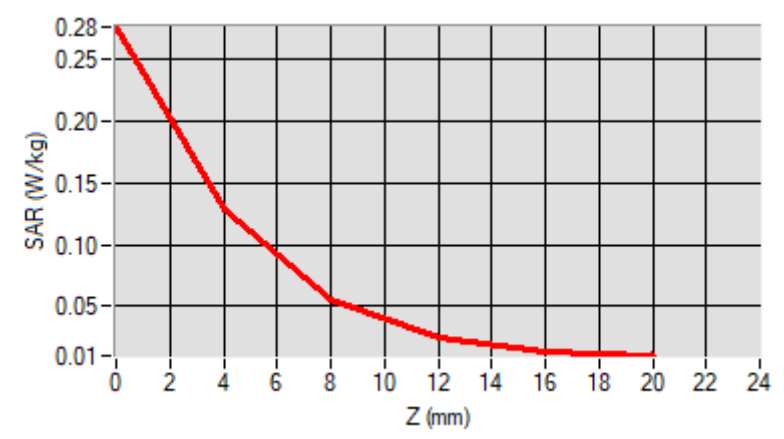
Maximum location: X=-8.00, Y=-6.00

D. SAR 1g & 10g

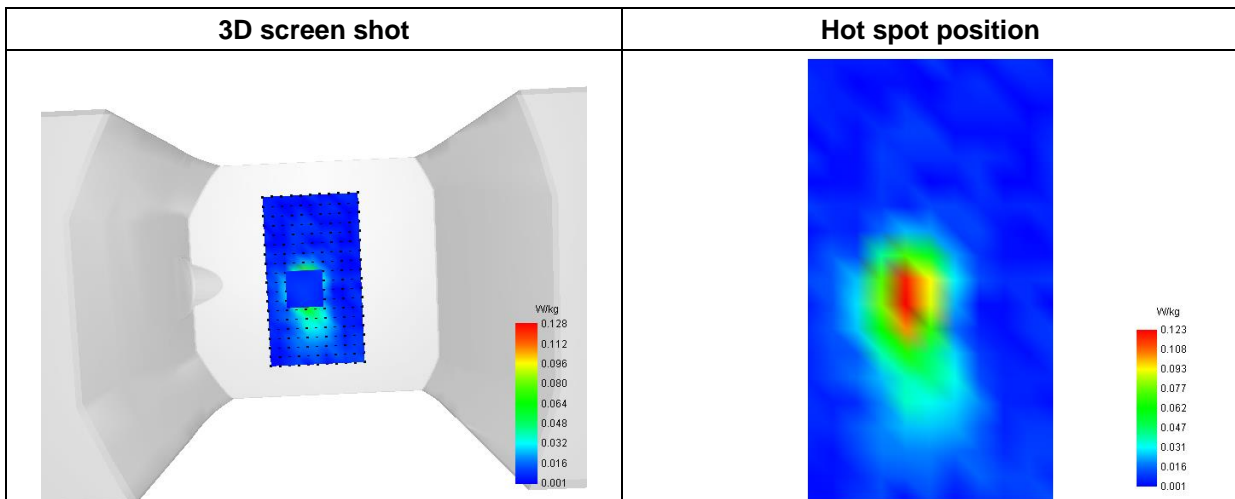
SAR 10g (W/Kg)	0.050844
SAR 1g (W/Kg)	0.118502

E. Z Axis Scan

Z (mm)	0.00	4.00	8.00	12.00	16.00
SAR (W/Kg)	0.2767	0.1281	0.0549	0.0246	0.0141



F. 3D Image



MEASUREMENT 25

Type: Phone measurement (Complete)

Date of measurement: 2023-08-18

Measurement duration: 12 minutes 3 seconds

E-field Probe: SSE2 - SN 18/21 EPGO356; ConvF: 2.07; Calibrated: 2023-07-07

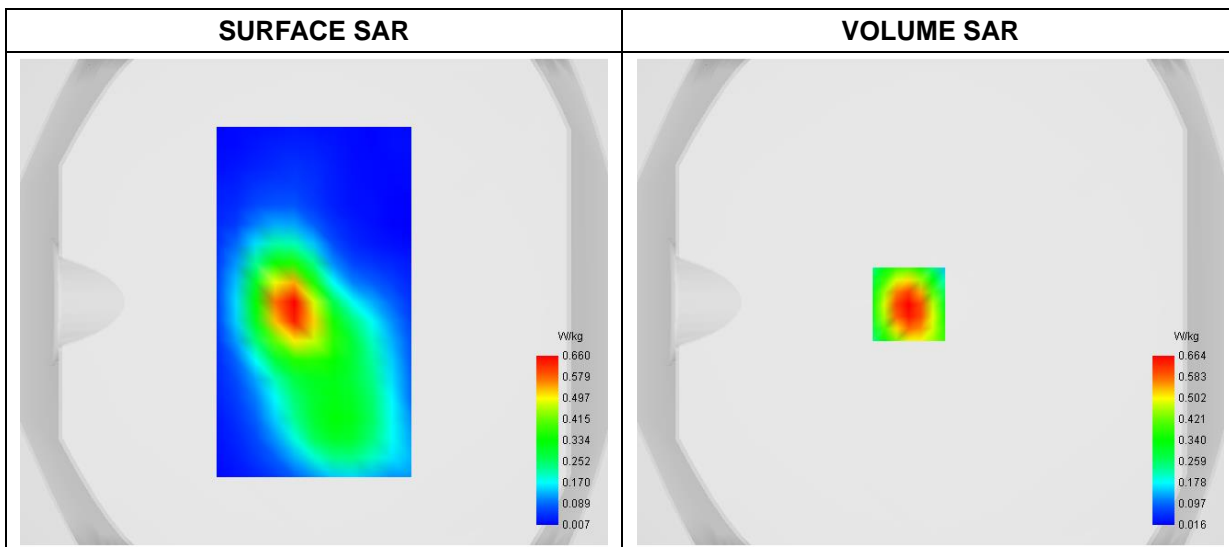
A. Experimental conditions

Area Scan	dx=8mm dy=8mm
Zoom Scan	dx=5mm dy=5mm dz=4mm
Phantom	Flat Plane
Device Position	Back
Band	DC_2A_N78A_3450-3550MHz
Channels	DFT-s-OFDM QPSK, 100MHz, 1RB, High
Signal	Duty Cycle 1:1

B. SAR Measurement Results

Frequency (MHz)	2560.000000
Relative Permittivity (real part)	40.241092
Conductivity (S/m)	1.931764
Power Variation (%)	-1.421400
Ambient Temperature	23.1
Liquid Temperature	23.1

C. SAR Surface and Volume



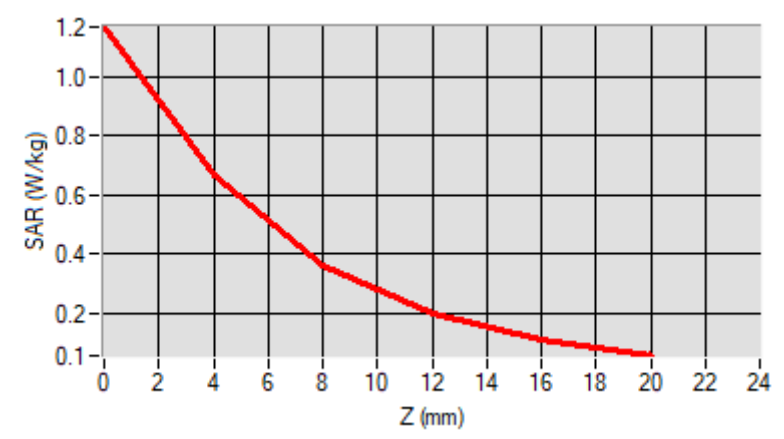
Maximum location: X=-9.00, Y=-1.00

D. SAR 1g & 10g

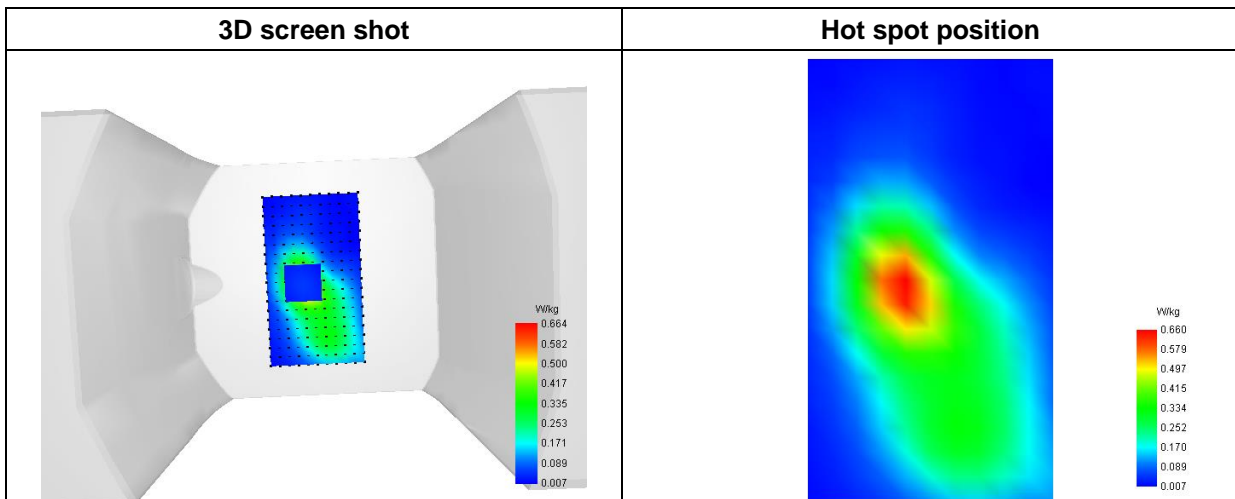
SAR 10g (W/Kg)	0.303395
SAR 1g (W/Kg)	0.613052

E. Z Axis Scan

Z (mm)	0.00	4.00	8.00	12.00	16.00
SAR (W/Kg)	1.1667	0.6637	0.3631	0.1964	0.1081



F. 3D Image



MEASUREMENT 26

Type: Phone measurement (Complete)

Date of measurement: 2023-08-19

Measurement duration: 12 minutes 3 seconds

E-field Probe: SSE2 - SN 18/21 EPGO356; ConvF: 2.27; Calibrated: 2023-07-07

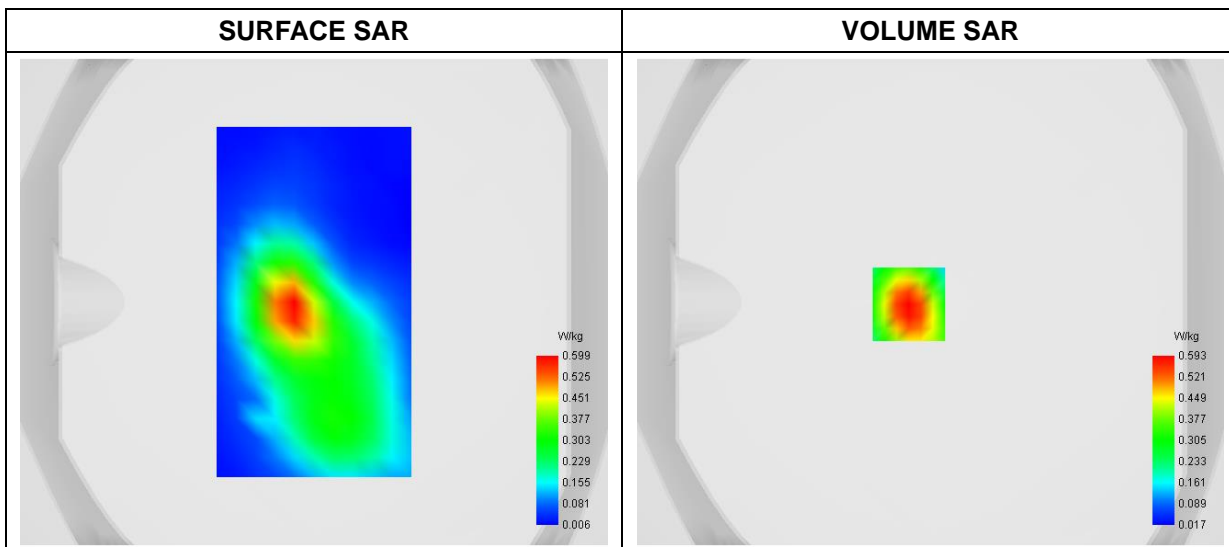
A. Experimental conditions

Area Scan	dx=8mm dy=8mm
Zoom Scan	dx=5mm dy=5mm dz=4mm
Phantom	Flat Plane
Device Position	Back
Band	DC_2A_N78A_3700-3800MHz
Channels	DFT-s-OFDM QPSK, 100MHz, 1RB, Middle
Signal	Duty Cycle 1:1

B. SAR Measurement Results

Frequency (MHz)	3750.000000
Relative Permittivity (real part)	36.531489
Conductivity (S/m)	3.372547
Power Variation (%)	-0.319700
Ambient Temperature	22.4
Liquid Temperature	22.4

C. SAR Surface and Volume



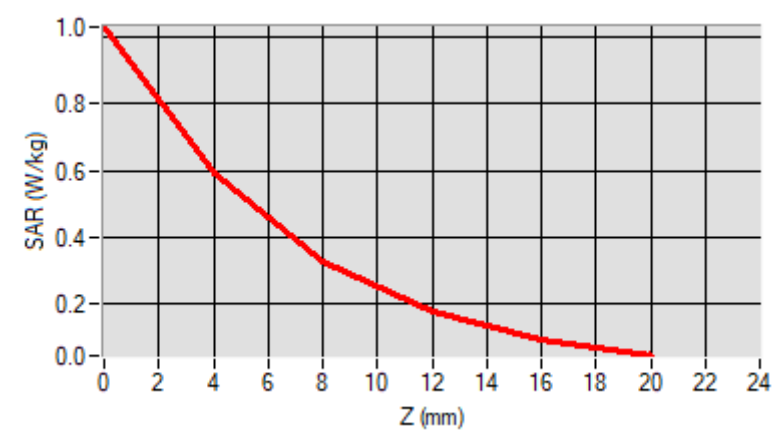
Maximum location: X=-9.00, Y=-1.00

D. SAR 1g & 10g

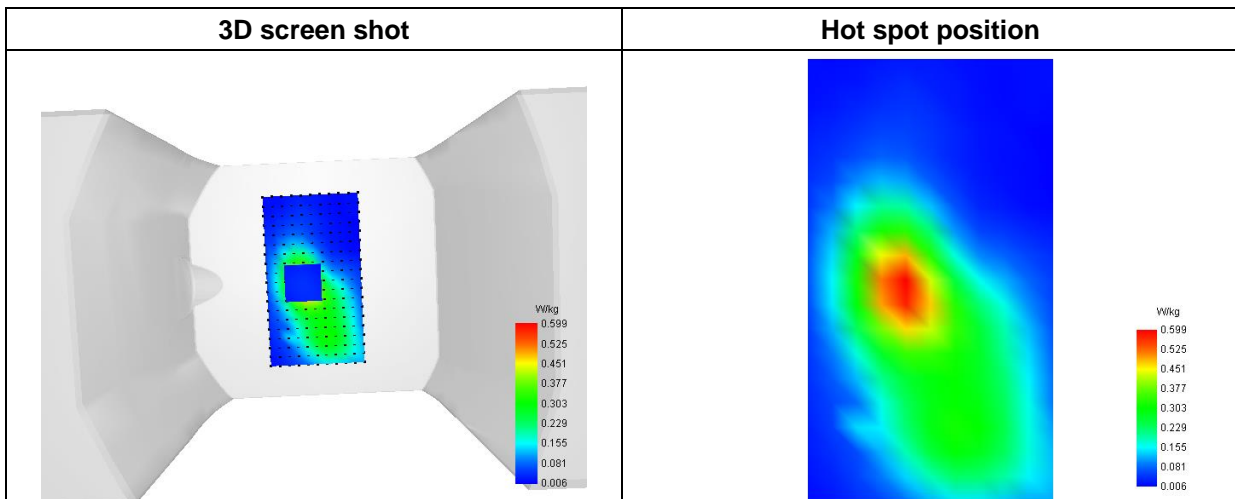
SAR 10g (W/Kg)	0.272937
SAR 1g (W/Kg)	0.548876

E. Z Axis Scan

Z (mm)	0.00	4.00	8.00	12.00	16.00
SAR (W/Kg)	1.0300	0.5934	0.3275	0.1762	0.0939



F. 3D Image



MEASUREMENT 27

Type: Phone measurement (Complete)

Date of measurement: 2023-08-19

Measurement duration: 12 minutes 3 seconds

E-field Probe: SSE2 - SN 18/21 EPGO356; ConvF: 2.07; Calibrated: 2023-07-07

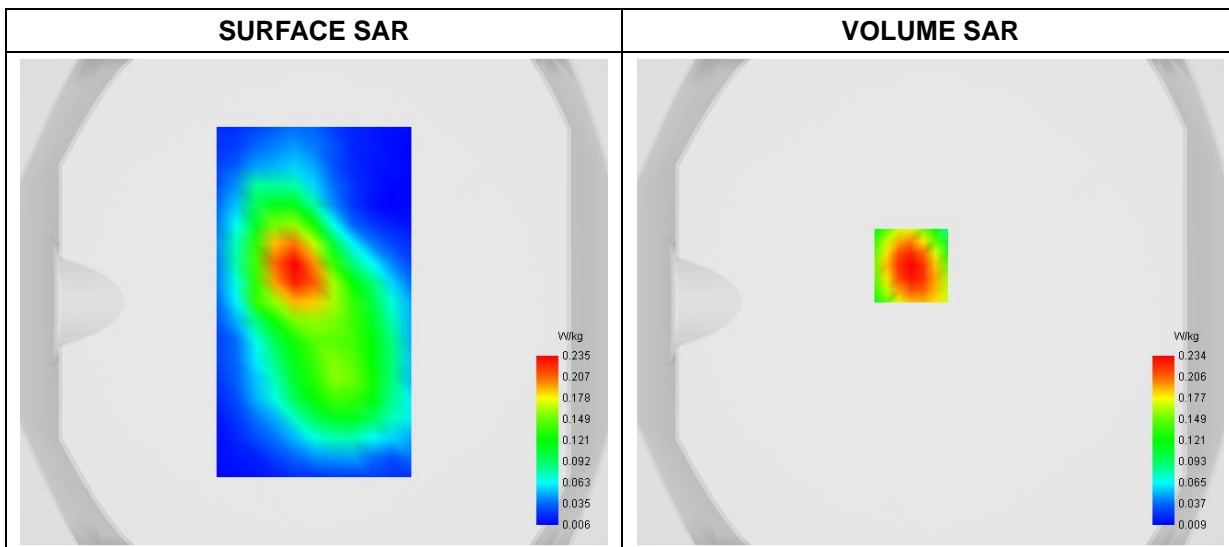
A. Experimental conditions

Area Scan	dx=8mm dy=8mm
Zoom Scan	dx=5mm dy=5mm dz=4mm
Phantom	Flat Plane
Device Position	Back
Band	DC_12A_N77A_3450-3550MHz
Channels	DFT-s-OFDM QPSK, 100MHz, 1RB,Middle
Signal	Duty Cycle 1:1

B. SAR Measurement Results

Frequency (MHz)	3500.000000
Relative Permittivity (real part)	37.521373
Conductivity (S/m)	3.051287
Power Variation (%)	1.654700
Ambient Temperature	23.4
Liquid Temperature	23.4

C. SAR Surface and Volume



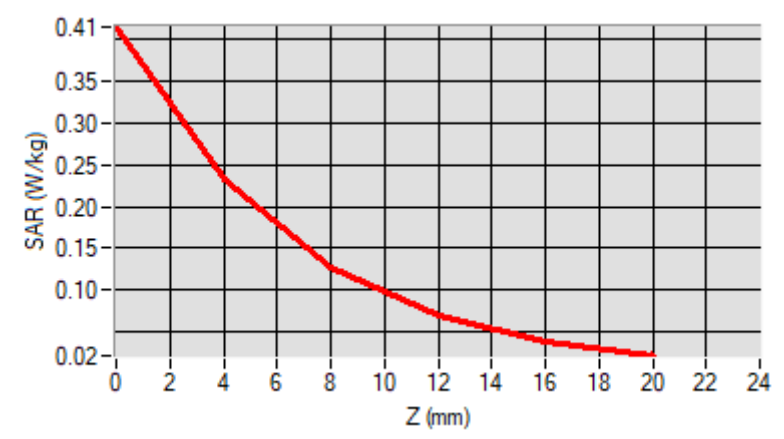
Maximum location: X=-8.00, Y=15.00

D. SAR 1g & 10g

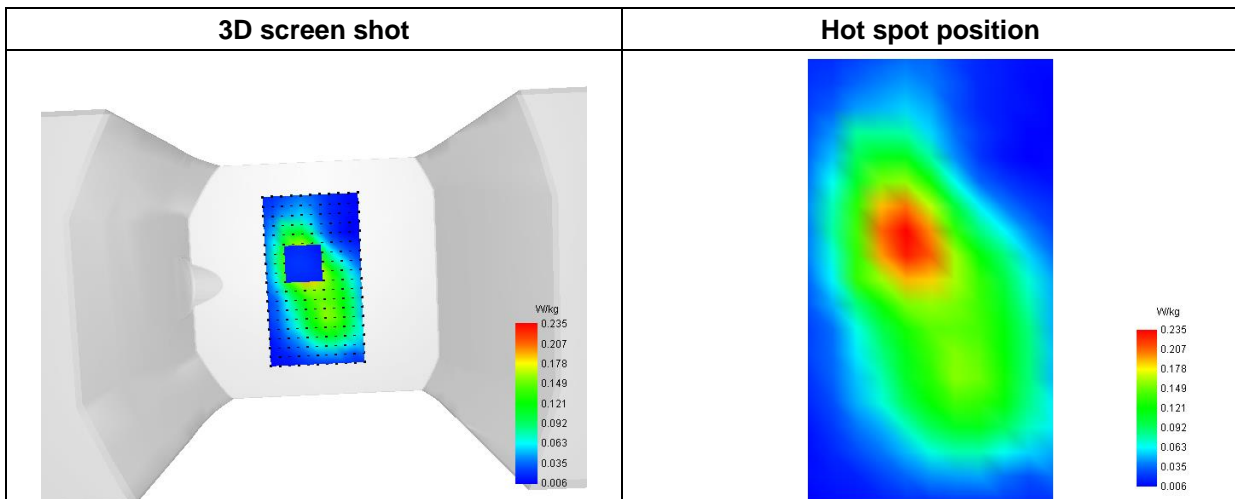
SAR 10g (W/Kg)	0.113782
SAR 1g (W/Kg)	0.219692

E. Z Axis Scan

Z (mm)	0.00	4.00	8.00	12.00	16.00
SAR (W/Kg)	0.4149	0.2336	0.1269	0.0690	0.0391



F. 3D Image



MEASUREMENT 28

Type: Phone measurement (Complete)

Date of measurement: 2023-08-19

Measurement duration: 12 minutes 3 seconds

E-field Probe: SSE2 - SN 18/21 EPGO356; ConvF: 2.37; Calibrated: 2023-07-07

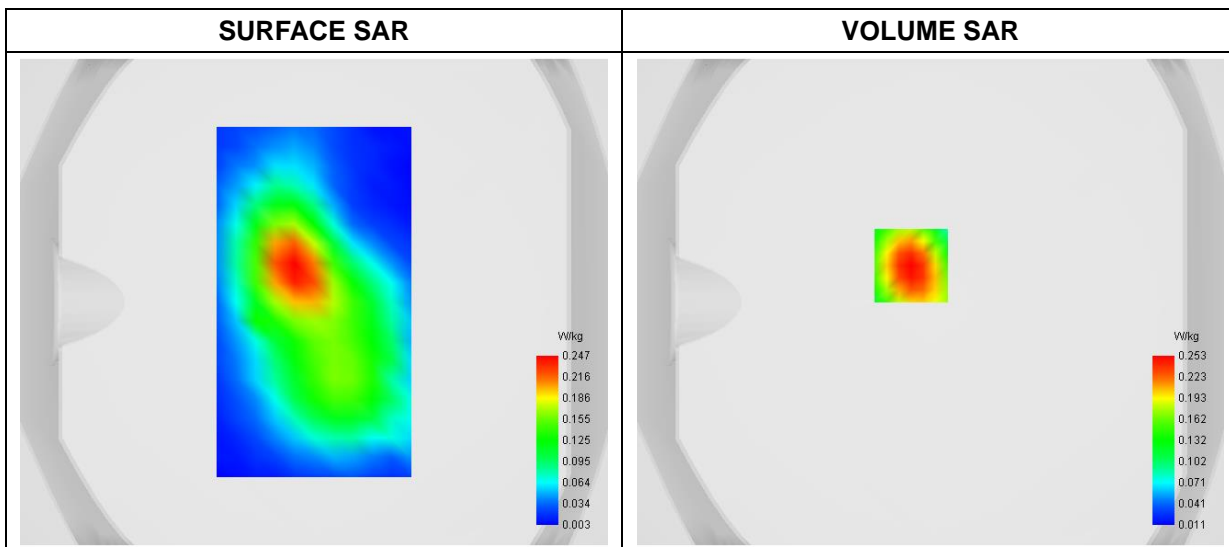
A. Experimental conditions

Area Scan	dx=8mm dy=8mm
Zoom Scan	dx=5mm dy=5mm dz=4mm
Phantom	Flat Plane
Device Position	Back
Band	DC_12A_N77A_3700-3980MHz
Channels	DFT-s-OFDM QPSK, 100MHz, 1RB, Middle
Signal	Duty Cycle 1:1

B. SAR Measurement Results

Frequency (MHz)	3845.000000
Relative Permittivity (real part)	35.832631
Conductivity (S/m)	3.653625
Power Variation (%)	1.865800
Ambient Temperature	22.4
Liquid Temperature	22.4

C. SAR Surface and Volume



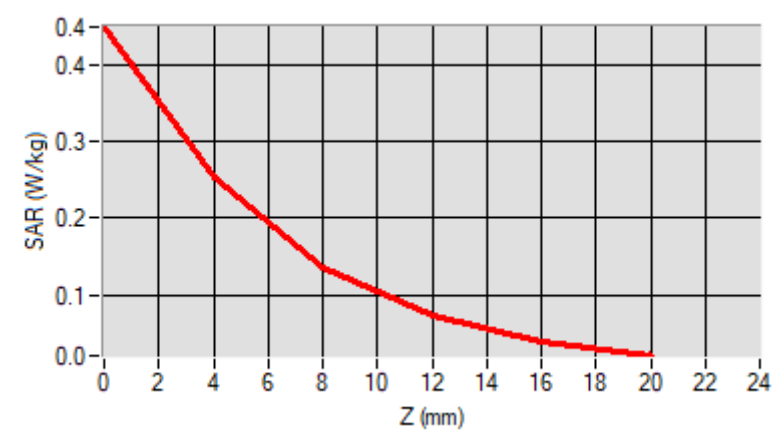
Maximum location: X=-8.00, Y=15.00

D. SAR 1g & 10g

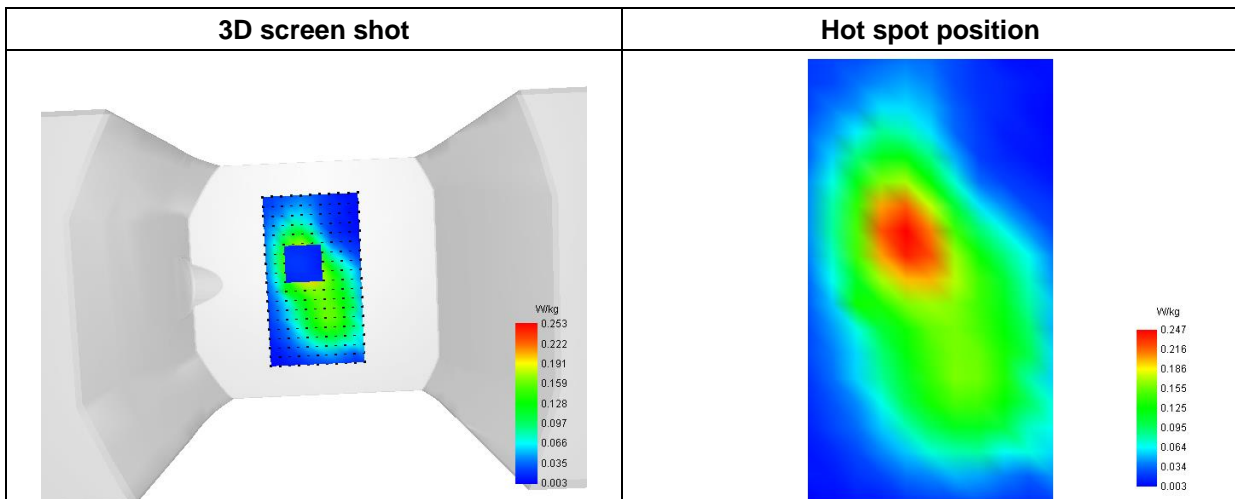
SAR 10g (W/Kg)	0.121063
SAR 1g (W/Kg)	0.237051

E. Z Axis Scan

Z (mm)	0.00	4.00	8.00	12.00	16.00
SAR (W/Kg)	0.4489	0.2531	0.1371	0.0735	0.0403



F. 3D Image



MEASUREMENT 29

Type: Phone measurement (Complete)

Date of measurement: 2023-08-18

Measurement duration: 12 minutes 3 seconds

E-field Probe: SSE2 - SN 18/21 EPGO356; ConvF: 2.29; Calibrated: 2023-07-07

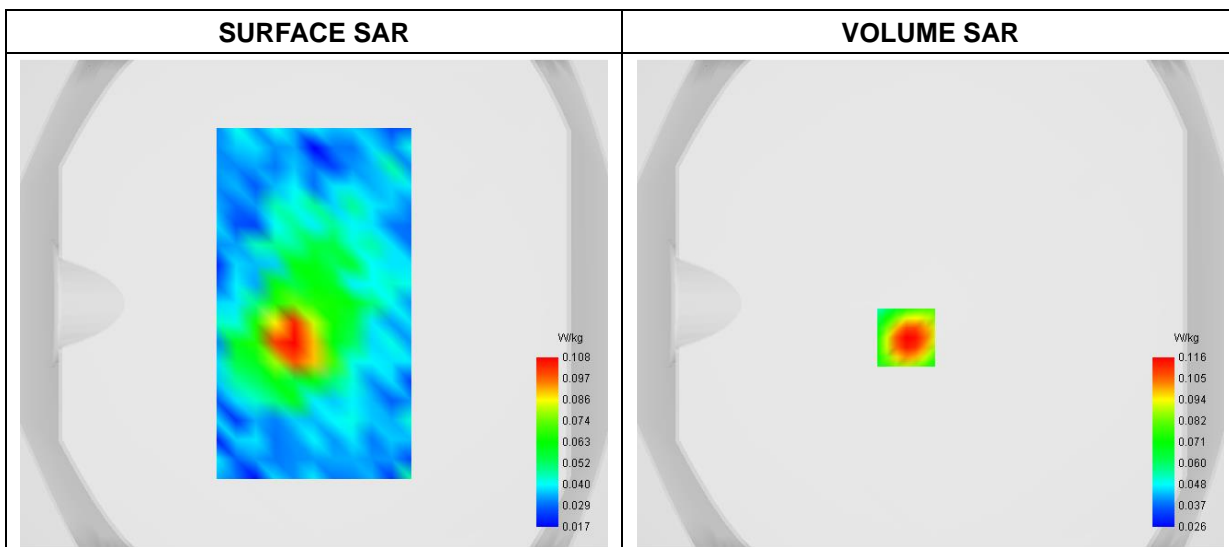
A. Experimental conditions

Area Scan	dx=8mm dy=8mm
Zoom Scan	dx=4mm dy=4mm dz=2mm
Phantom	Flat Plane
Device Position	Back
Band	WiFi_802.11b-ANT1
Channels	Middle
Signal	Duty Cycle 1:1

B. SAR Measurement Results

Frequency (MHz)	2437.000000
Relative Permittivity (real part)	40.582148
Conductivity (S/m)	1.832554
Power Variation (%)	2.403721
Ambient Temperature	23.1
Liquid Temperature	23.1

C. SAR Surface and Volume



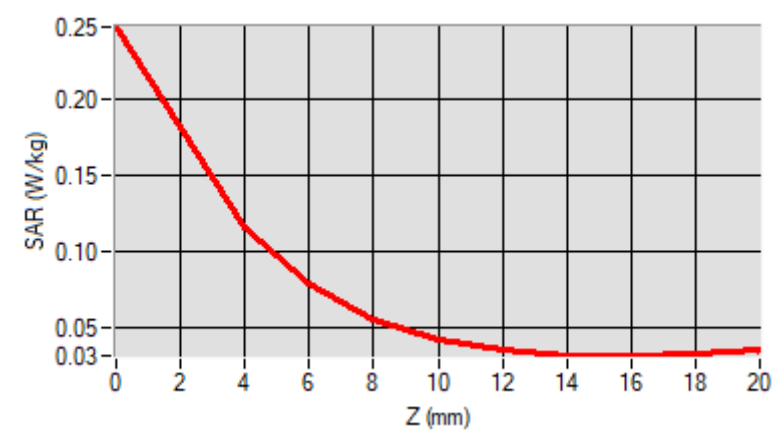
Maximum location: X=-10.00, Y=-14.00

D. SAR 1g & 10g

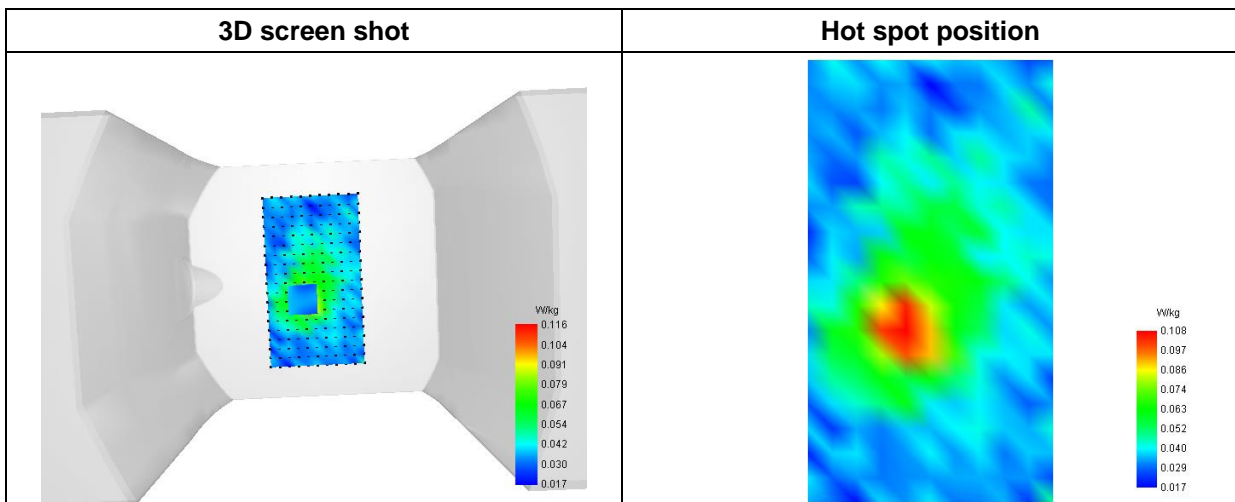
SAR 10g (W/Kg)	0.064239
SAR 1g (W/Kg)	0.114445

E. Z Axis Scan

Z (mm)	0.00	4.00	6.00	8.00	10.00	12.00	14.00	16.00	18.00
SAR (W/Kg)	0.2488	0.1166	0.0796	0.0565	0.0428	0.0357	0.0326	0.0314	0.0323



F. 3D Image



MEASUREMENT 30

Type: Phone measurement (Complete)

Date of measurement: 2023-08-10

Measurement duration: 12 minutes 3 seconds

E-field Probe: SSE2 - SN 18/21 EPGO356; ConvF: 1.91; Calibrated: 2023-07-07

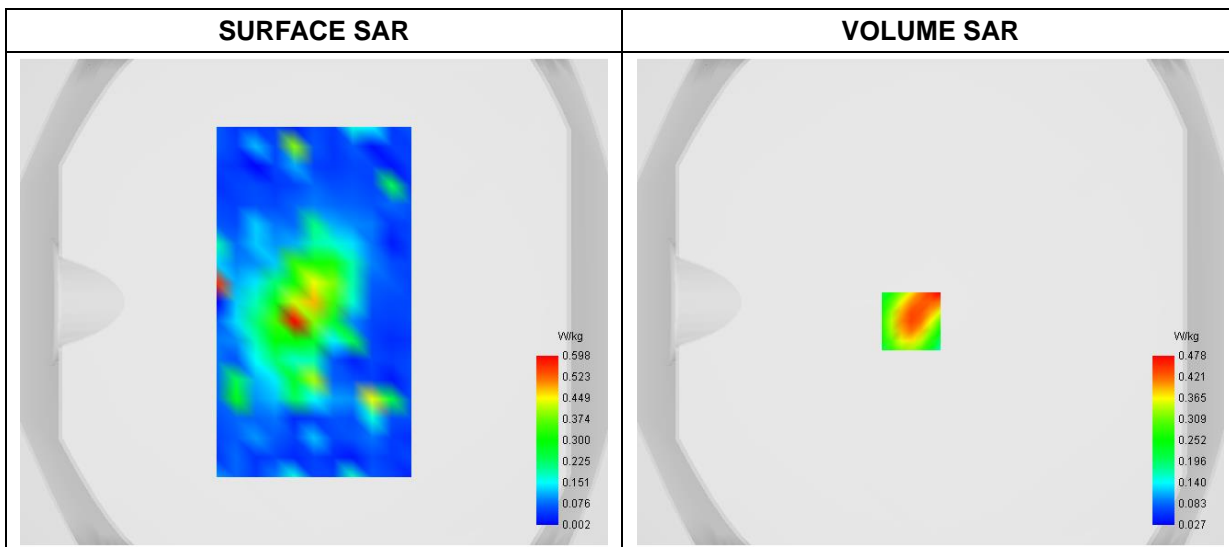
A. Experimental conditions

Area Scan	dx=8mm dy=8mm
Zoom Scan	dx=4mm dy=4mm dz=2mm
Phantom	Flat Plane
Device Position	Front
Band	WiFi(5.2GHz)_802.11a-ANT1
Channels	Middle
Signal	Duty Cycle: 1:1

B. SAR Measurement Results

Frequency (MHz)	5200.000000
Relative Permittivity (real part)	36.212911
Conductivity (S/m)	4.631483
Power Variation (%)	-0.526600
Ambient Temperature	22.3
Liquid Temperature	22.3

C. SAR Surface and Volume



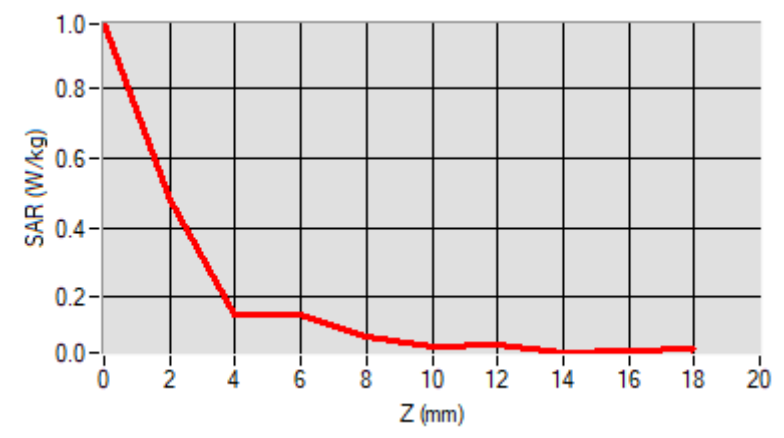
Maximum location: X=-8.00, Y=-8.00

D. SAR 1g & 10g

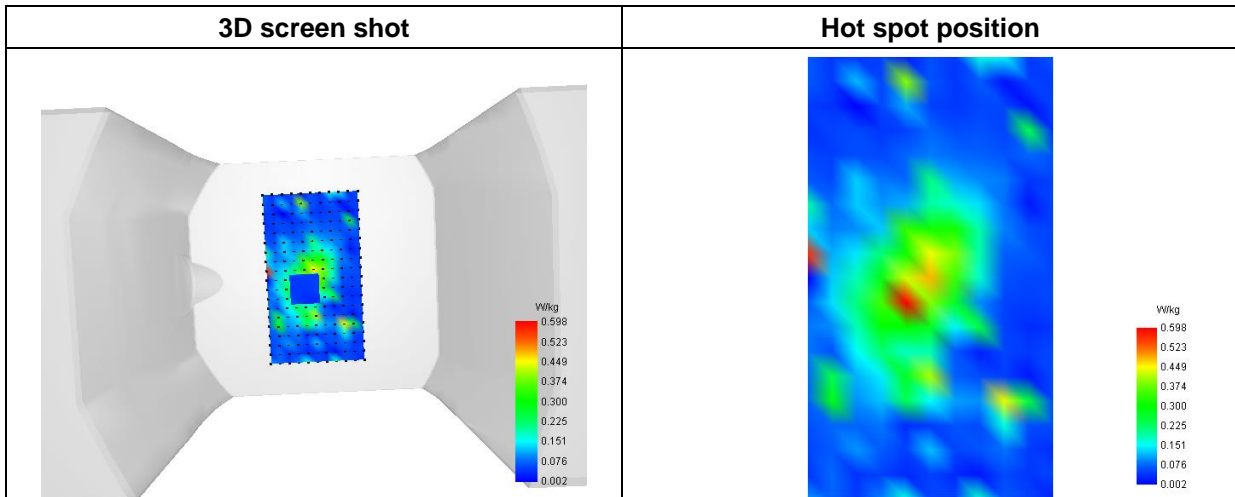
SAR 10g (W/Kg)	0.128672
SAR 1g (W/Kg)	0.275572

E. Z Axis Scan

Z (mm)	0.00	2.00	4.00	6.00	8.00	10.00	12.00	14.00	16.00
SAR (W/Kg)	0.9813	0.4776	0.1533	0.1488	0.0871	0.0574	0.0674	0.0424	0.0509



F. 3D Image



MEASUREMENT 31

Type: Phone measurement (Complete)

Date of measurement: 2023-08-10

Measurement duration: 12 minutes 3 seconds

E-field Probe: SSE2 - SN 18/21 EPGO356; ConvF: 2.12; Calibrated: 2023-07-07

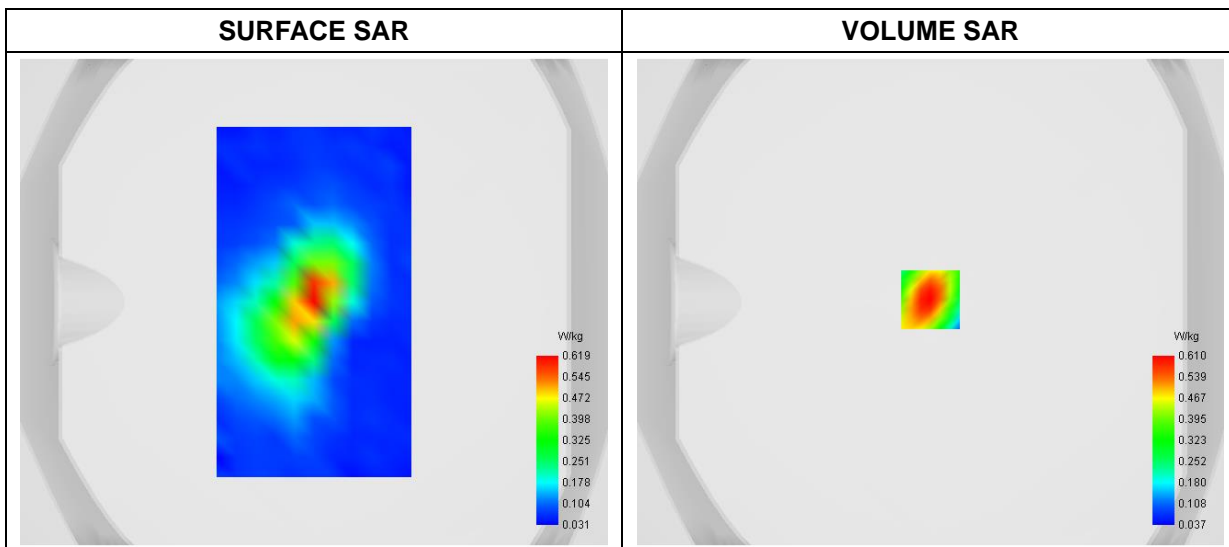
A. Experimental conditions

Area Scan	dx=8mm dy=8mm
Zoom Scan	dx=4mm dy=4mm dz=2mm
Phantom	Flat Plane
Device Position	Front
Band	WiFi(5.3GHz)_802.11a-ANT1
Channels	High
Signal	Duty Cycle: 1:1

B. SAR Measurement Results

Frequency (MHz)	5320.000000
Relative Permittivity (real part)	36.352839
Conductivity (S/m)	4.822192
Power Variation (%)	0.463782
Ambient Temperature	22.3
Liquid Temperature	22.3

C. SAR Surface and Volume



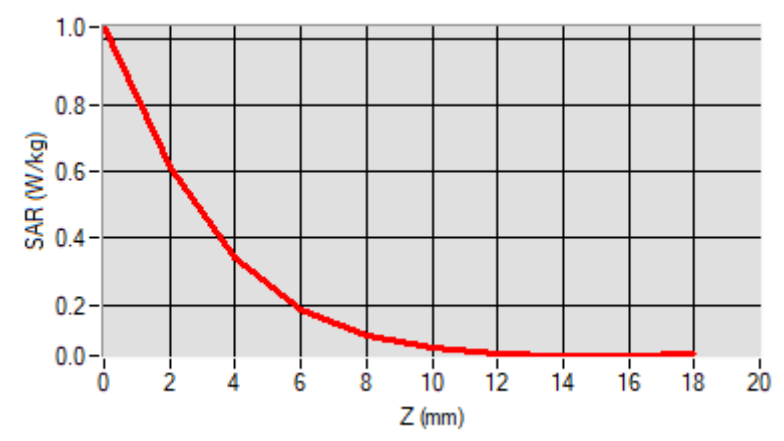
Maximum location: X=0.00, Y=1.00

D. SAR 1g & 10g

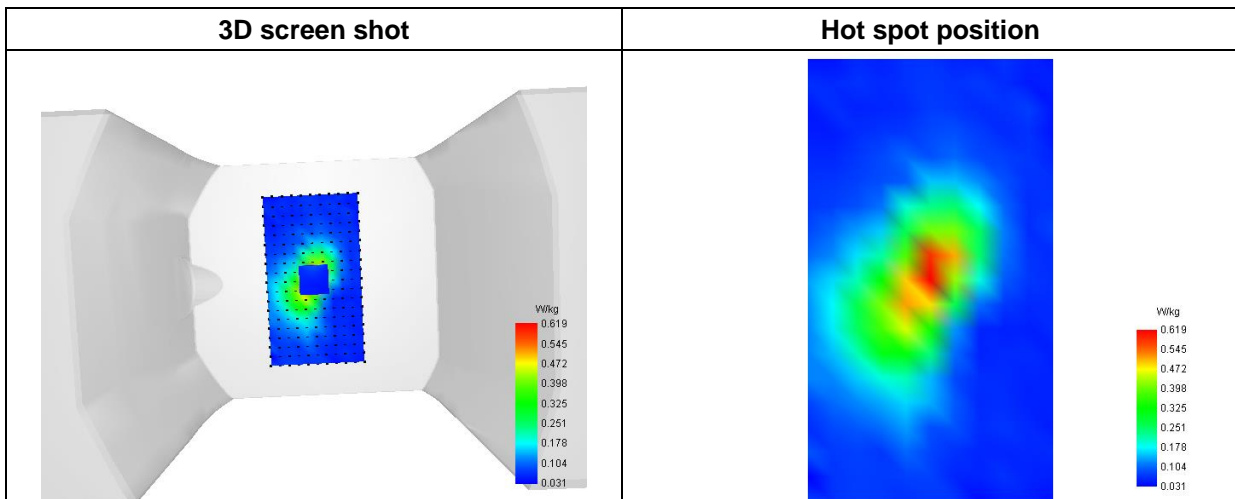
SAR 10g (W/Kg)	0.147259
SAR 1g (W/Kg)	0.3334892

E. Z Axis Scan

Z (mm)	0.00	2.00	4.00	6.00	8.00	10.00	12.00	14.00	16.00
SAR (W/Kg)	1.0316	0.6004	0.3322	0.1775	0.1046	0.0623	0.0509	0.0433	0.0471



F. 3D Image



MEASUREMENT 32

Type: Phone measurement (Complete)

Date of measurement: 2023-08-11

Measurement duration: 12 minutes 3 seconds

E-field Probe: SSE2 - SN 18/21 EPGO356; ConvF: 2.25; Calibrated: 2023-07-07

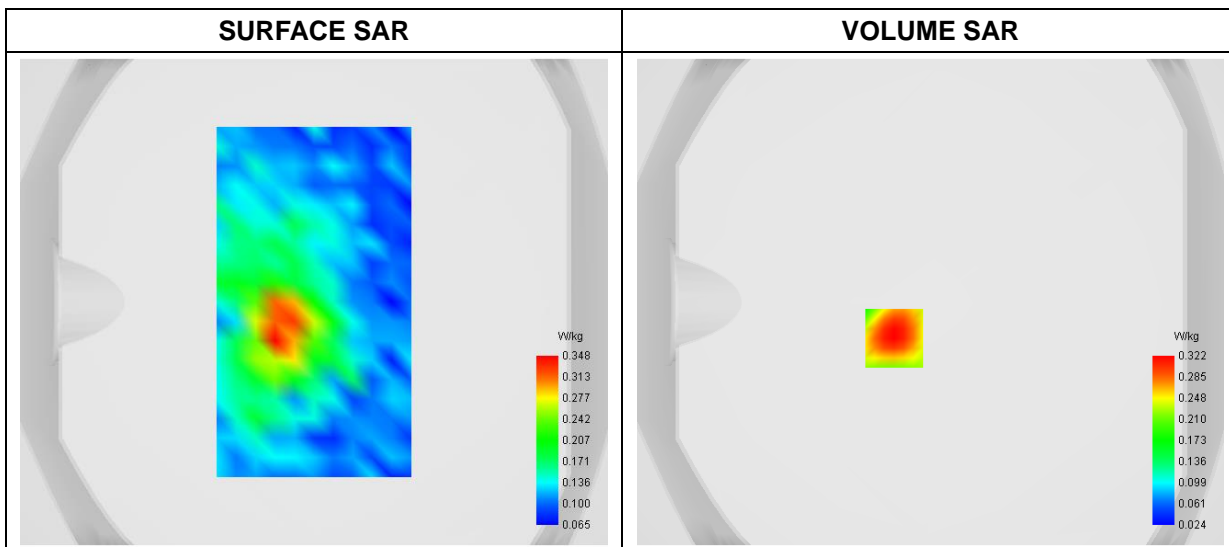
A. Experimental conditions

Area Scan	dx=8mm dy=8mm
Zoom Scan	dx=4mm dy=4mm dz=2mm
Phantom	Flat Plane
Device Position	Back
Band	WiFi(5.6GHz)_802.11a_ANT1
Channels	Low
Signal	Duty Cycle: 1:1

B. SAR Measurement Results

Frequency (MHz)	5500.000000
Relative Permittivity (real part)	36.422546
Conductivity (S/m)	5.131512
Power Variation (%)	0.848732
Ambient Temperature	22.3
Liquid Temperature	22.3

C. SAR Surface and Volume



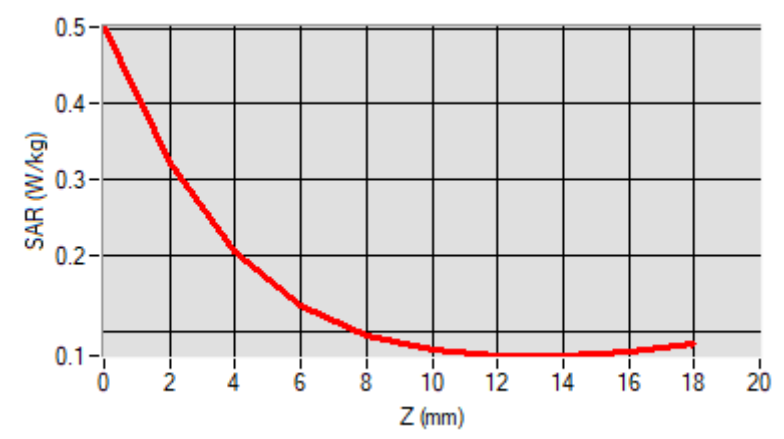
Maximum location: X=-15.00, Y=-15.00

D. SAR 1g & 10g

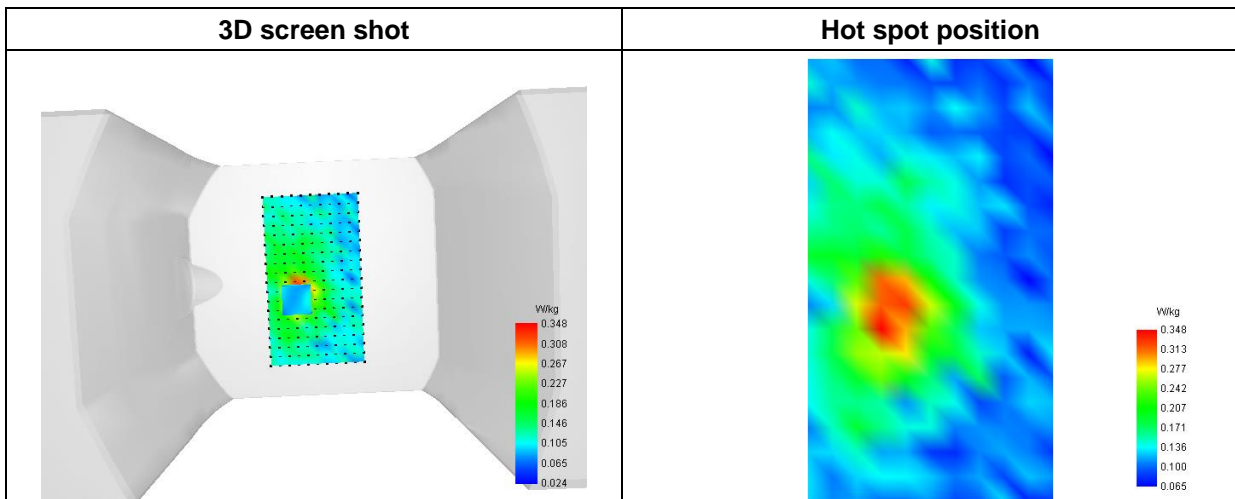
SAR 10g (W/Kg)	0.134619
SAR 1g (W/Kg)	0.228317

E. Z Axis Scan

Z (mm)	0.00	2.00	4.00	6.00	8.00	10.00	12.00	14.00	16.00	18.00
SAR (W/Kg)	0.5019	0.3228	0.2038	0.1332	0.0971	0.0742	0.0661	0.0636	0.0636	0.0717



F. 3D Image



MEASUREMENT 33

Type: Phone measurement (Complete)

Date of measurement: 2023-08-11

Measurement duration: 12 minutes 3 seconds

E-field Probe: SSE2 - SN 18/21 EPGO356; ConvF: 2.15; Calibrated: 2023-07-07

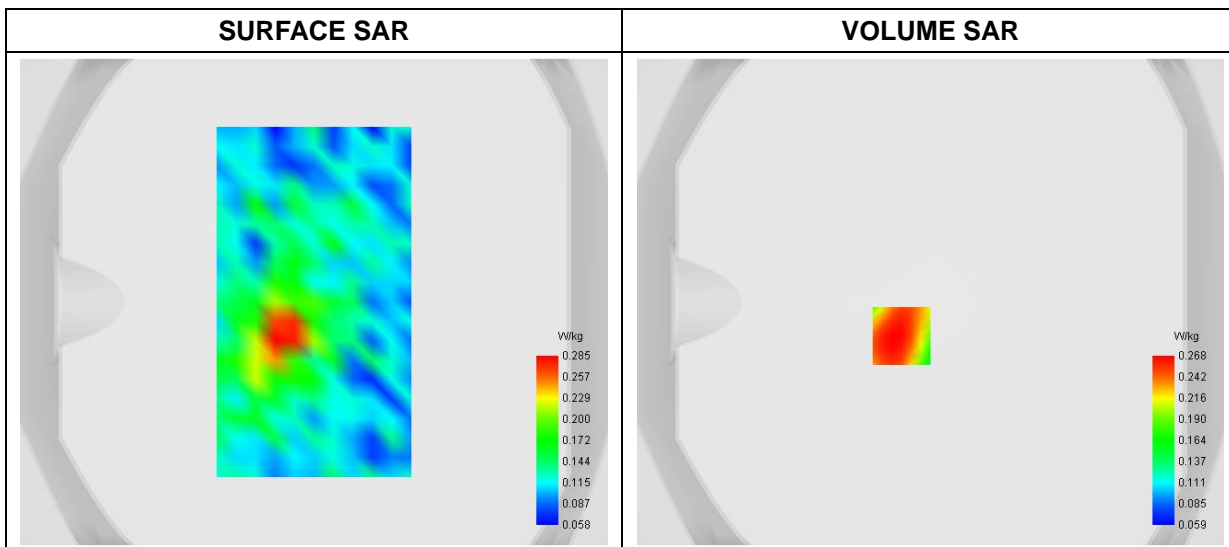
A. Experimental conditions

Area Scan	dx=8mm dy=8mm
Zoom Scan	dx=4mm dy=4mm dz=2mm
Phantom	Flat Plane
Device Position	Back
Band	WiFi(5.8GHz)_ 802.11a -ANT1
Channels	Middle
Signal	Duty Cycle: 1:1

B. SAR Measurement Results

Frequency (MHz)	5785.000000
Relative Permittivity (real part)	36.622839
Conductivity (S/m)	5.241254
Power Variation (%)	1.210512
Ambient Temperature	22.3
Liquid Temperature	22.3

C. SAR Surface and Volume



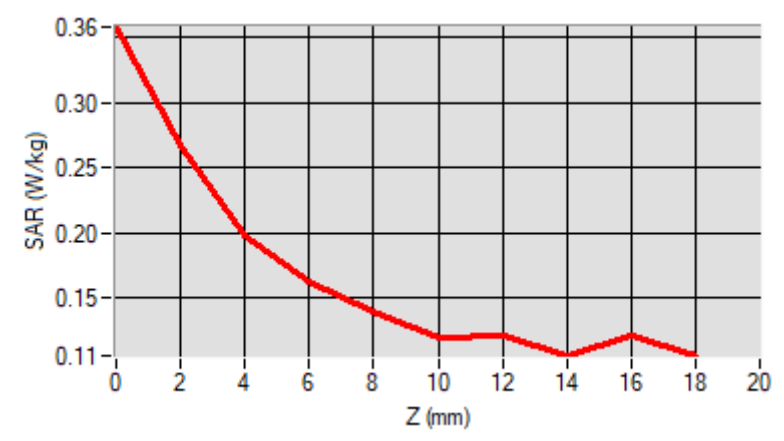
Maximum location: X=-12.00, Y=-14.00

D. SAR 1g & 10g

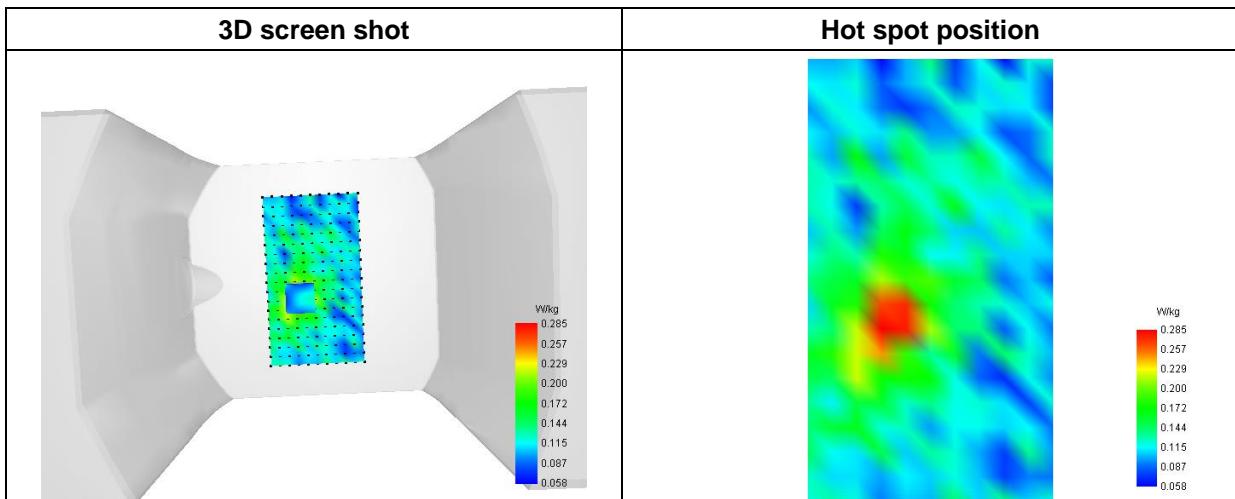
SAR 10g (W/Kg)	0.141892
SAR 1g (W/Kg)	0.216841

E. Z Axis Scan

Z (mm)	0.00	2.00	4.00	6.00	8.00	10.00	12.00	14.00	16.00	16.00
SAR (W/Kg)	0.3585	0.2675	0.1976	0.1629	0.1395	0.1189	0.1216	0.1054	0.1247	0.1247



F. 3D Image



MEASUREMENT 34

Type: Phone measurement (Complete)

Date of measurement: 2023-08-18

Measurement duration: 12 minutes 3 seconds

E-field Probe: SSE2 - SN 18/21 EPGO356; ConvF: 2.29; Calibrated: 2023-07-07

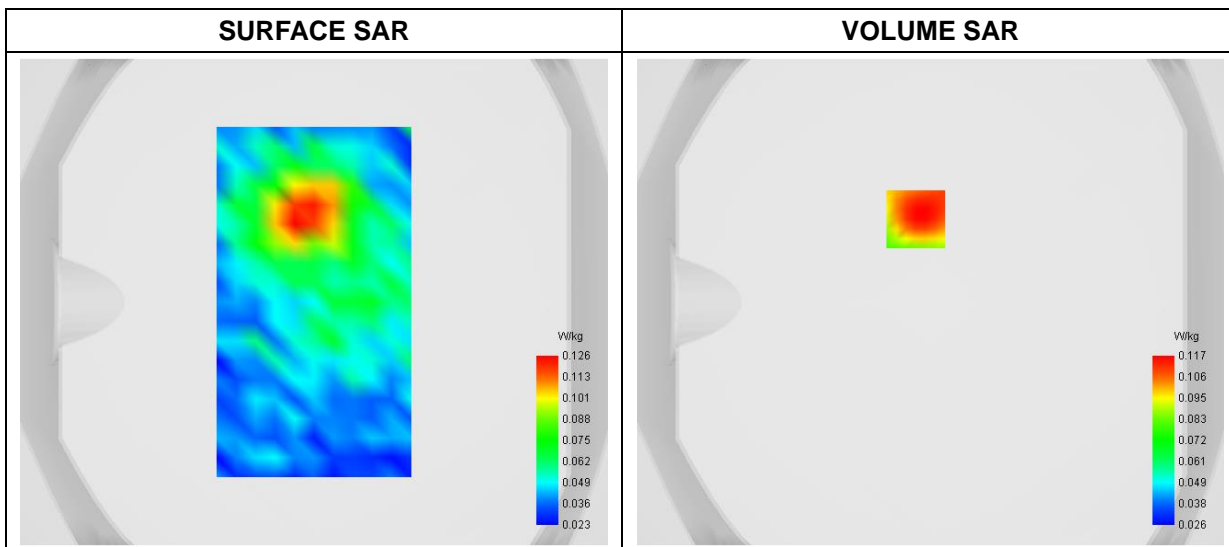
A. Experimental conditions

Area Scan	dx=8mm dy=8mm
Zoom Scan	dx=4mm dy=4mm dz=2mm
Phantom	Flat Plane
Device Position	Back
Band	WiFi_802.11b-ANT2
Channels	High
Signal	Duty Cycle: 1:1

B. SAR Measurement Results

Frequency (MHz)	2462.000000
Relative Permittivity (real part)	40.578312
Conductivity (S/m)	1.831228
Power Variation (%)	-0.537400
Ambient Temperature	23.1
Liquid Temperature	23.1

C. SAR Surface and Volume



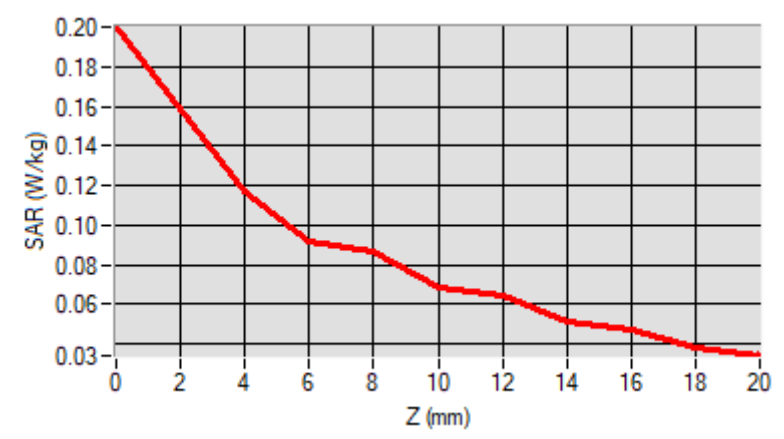
Maximum location: X=-6.00, Y=34.00

D. SAR 1g & 10g

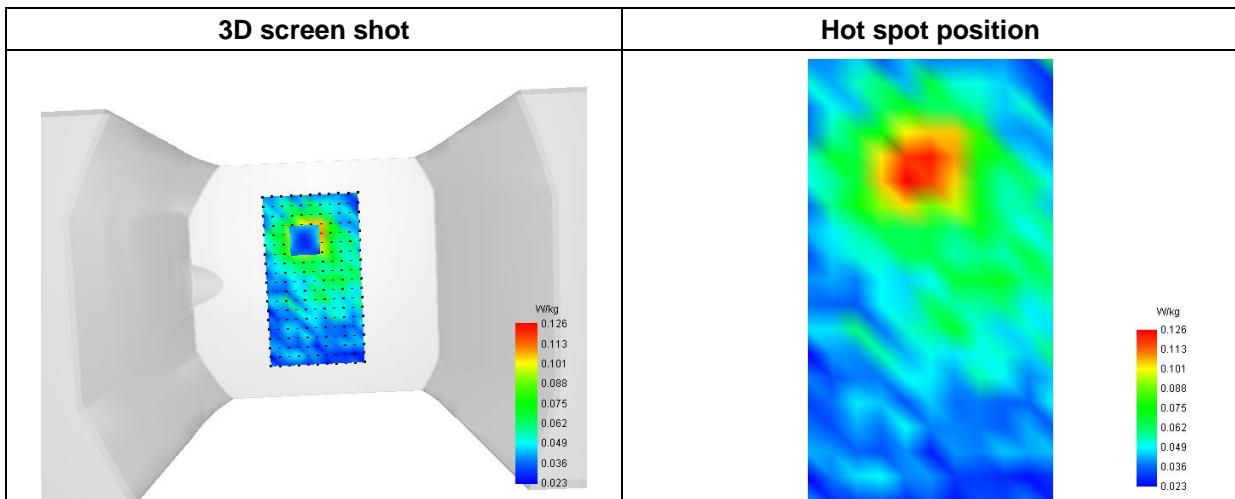
SAR 10g (W/Kg)	0.074998
SAR 1g (W/Kg)	0.118601

E. Z Axis Scan

Z (mm)	0.00	4.00	6.00	8.00	10.00	12.00	14.00	16.00	18.00
SAR (W/Kg)	0.2001	0.1174	0.0912	0.0866	0.0688	0.0641	0.0511	0.0473	0.0381



F. 3D Image



MEASUREMENT 35

Type: Phone measurement (Complete)

Date of measurement: 2023-08-10

Measurement duration: 12 minutes 3 seconds

E-field Probe: SSE2 - SN 18/21 EPGO356; ConvF: 1.91; Calibrated: 2023-07-07

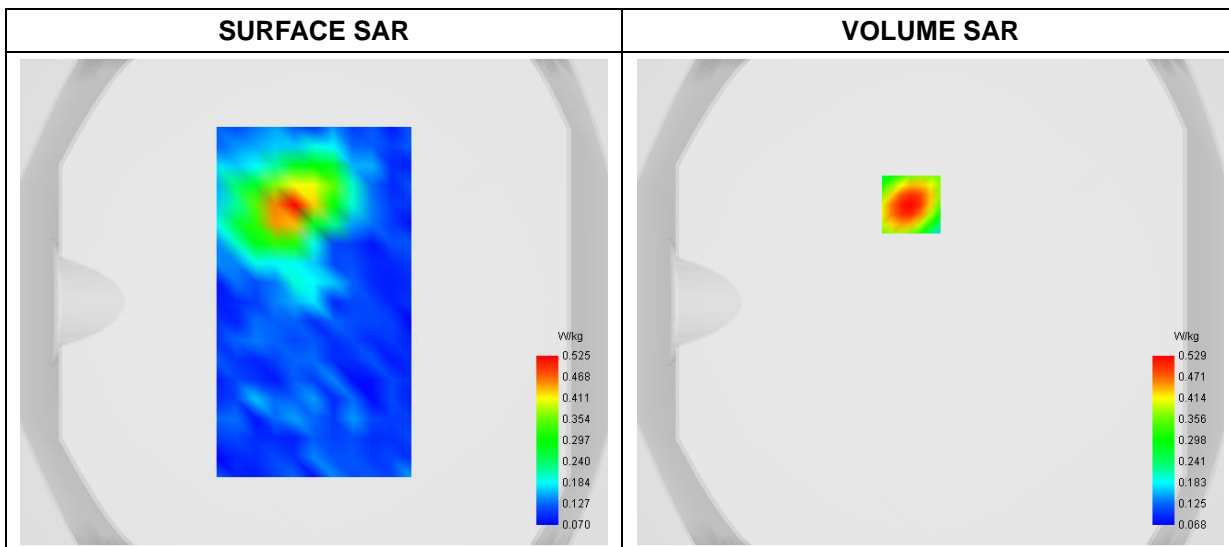
A. Experimental conditions

Area Scan	dx=8mm dy=8mm
Zoom Scan	dx=4mm dy=4mm dz=2mm
Phantom	Flat Plane
Device Position	Back
Band	WLAN(5.2GHz)_802.11a-ANT2
Channels	Low
Signal	Duty Cycle: 1:1

B. SAR Measurement Results

Frequency (MHz)	5180.000000
Relative Permittivity (real part)	36.202911
Conductivity (S/m)	4.63283
Power Variation (%)	-1.6658
Ambient Temperature	22.3
Liquid Temperature	22.3

C. SAR Surface and Volume



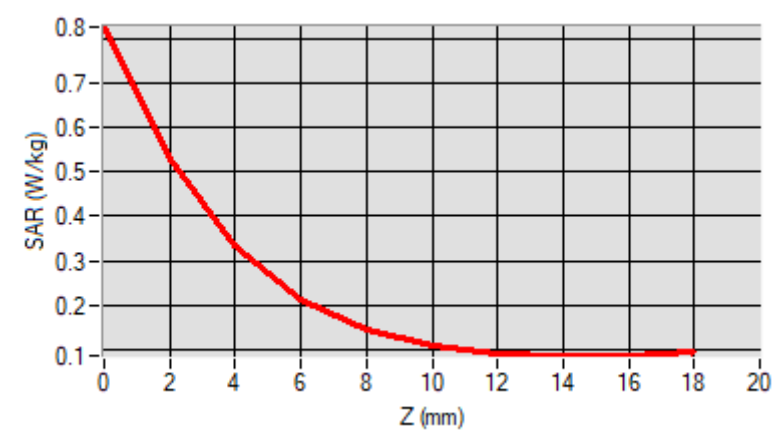
Maximum location: X=-8.00, Y=40.00

D. SAR 1g & 10g

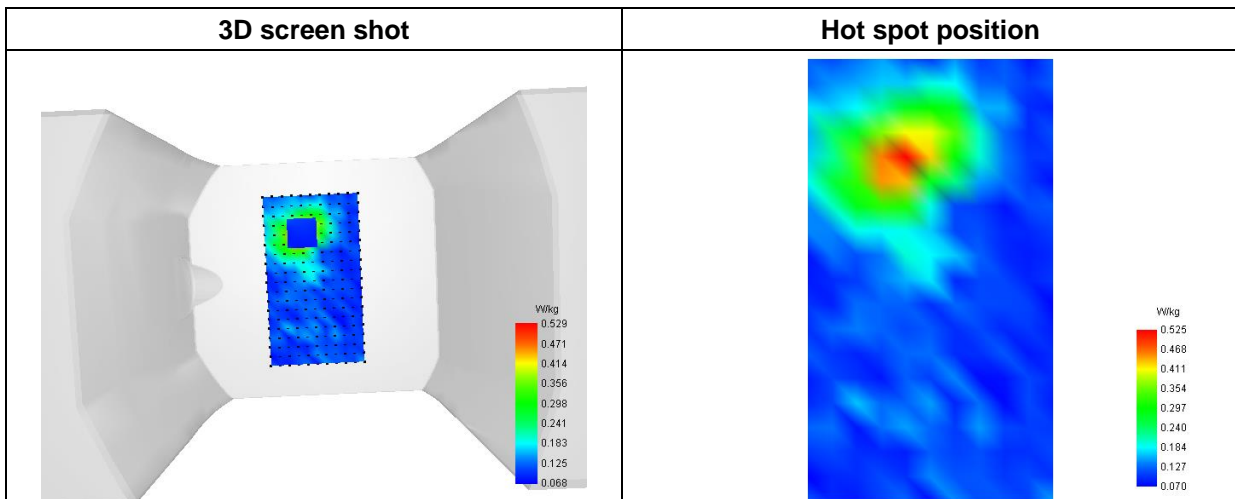
SAR 10g (W/Kg)	0.178822
SAR 1g (W/Kg)	0.343274

E. Z Axis Scan

Z (mm)	0.00	2.00	4.00	6.00	8.00	10.00	12.00	14.00	16.00
SAR (W/Kg)	0.8277	0.5288	0.3324	0.2115	0.1437	0.1077	0.0908	0.0854	0.0872



F. 3D Image



MEASUREMENT 36

Type: Phone measurement (Complete)

Date of measurement: 2023-08-10

Measurement duration: 12 minutes 3 seconds

E-field Probe: SSE2 - SN 18/21 EPGO356; ConvF: 2.12; Calibrated: 2023-07-07

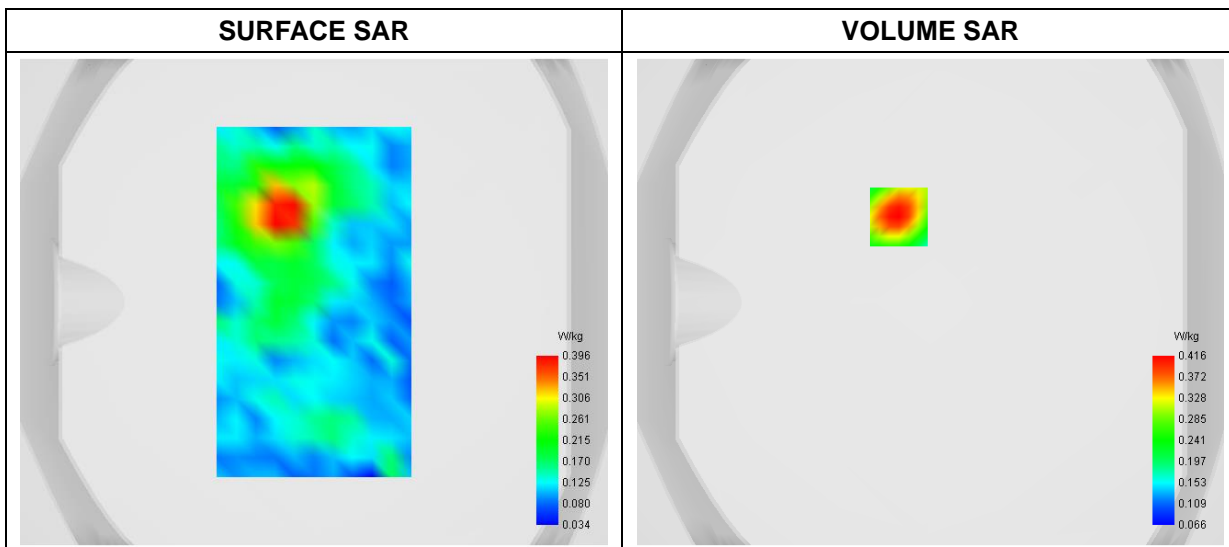
A. Experimental conditions

Area Scan	dx=8mm dy=8mm
Zoom Scan	dx=4mm dy=4mm dz=2mm
Phantom	Flat Plane
Device Position	Back
Band	WLAN(5.3GHz)_802.11a-ANT2
Channels	High
Signal	Duty Cycle: 1:1

B. SAR Measurement Results

Frequency (MHz)	5320.000000
Relative Permittivity (real part)	36.353248
Conductivity (S/m)	4.822715
Power Variation (%)	-0.95780
Ambient Temperature	22.3
Liquid Temperature	22.3

C. SAR Surface and Volume



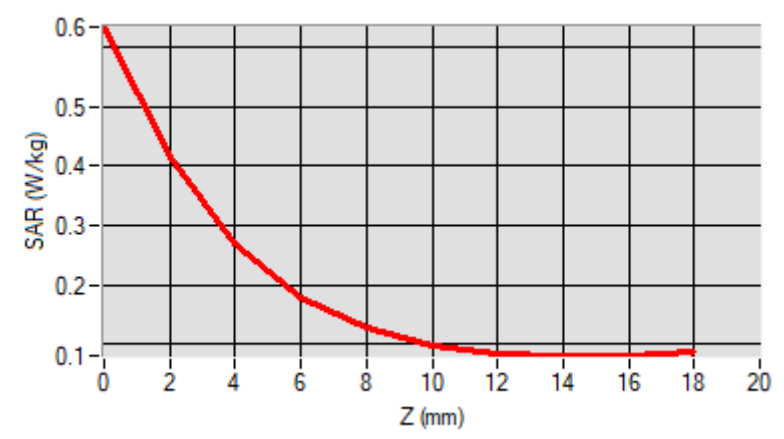
Maximum location: X=-13.00, Y=35.00

D. SAR 1g & 10g

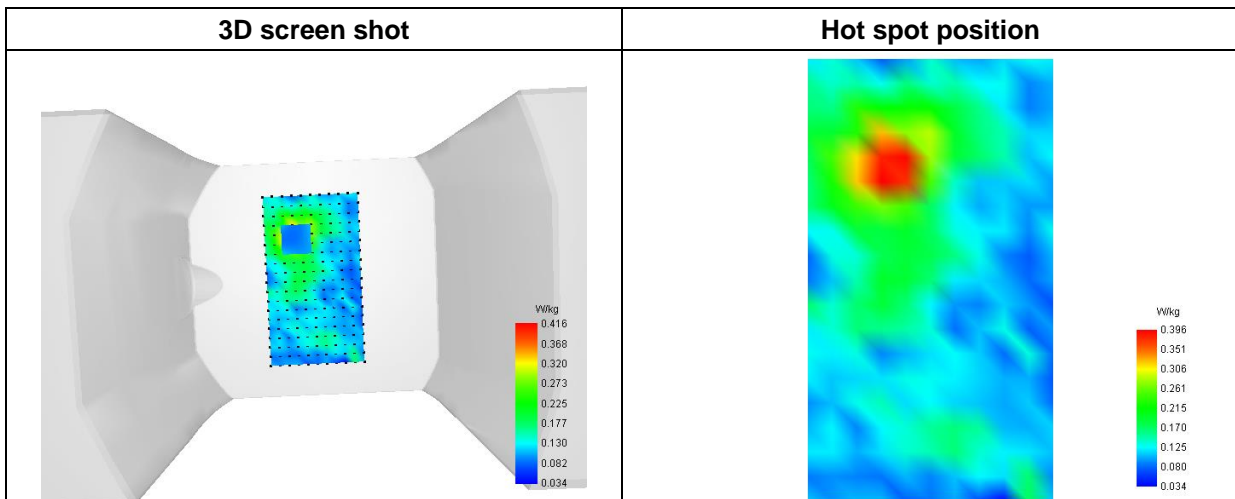
SAR 10g (W/Kg)	0.153187
SAR 1g (W/Kg)	0.270900

E. Z Axis Scan

Z (mm)	0.00	2.00	4.00	6.00	8.00	10.00	12.00	14.00	16.00
SAR (W/Kg)	0.6334	0.4158	0.2710	0.1800	0.1277	0.0993	0.0856	0.0811	0.0822



F. 3D Image



MEASUREMENT 37

Type: Phone measurement (Complete)

Date of measurement: 2023-08-11

Measurement duration: 12 minutes 3 seconds

E-field Probe: SSE2 - SN 18/21 EPGO356; ConvF: 2.25; Calibrated: 2023-07-07

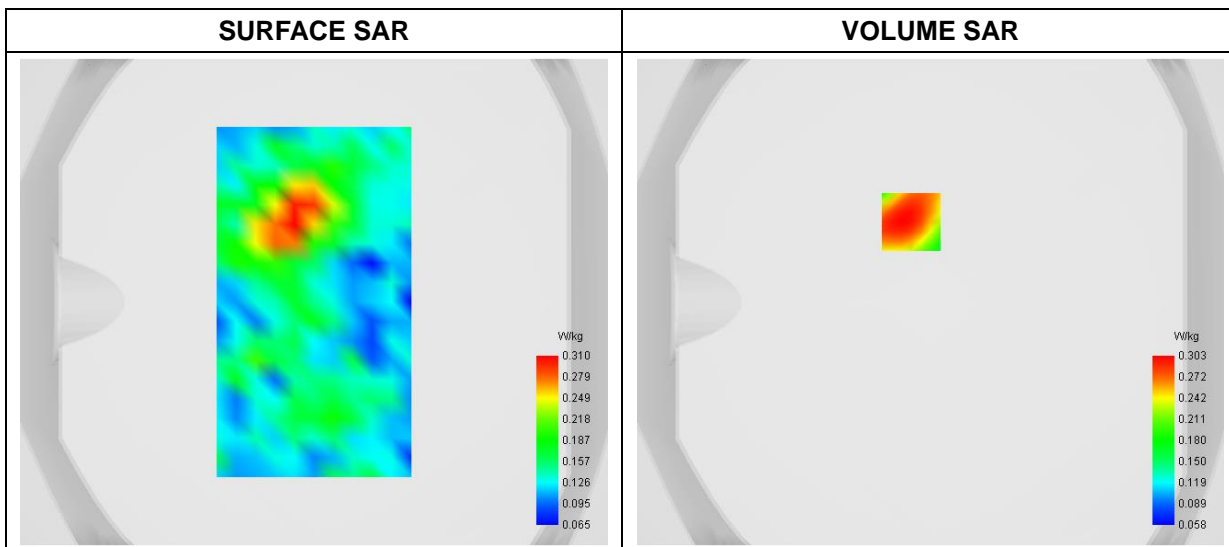
A. Experimental conditions

Area Scan	dx=8mm dy=8mm
Zoom Scan	dx=4mm dy=4mm dz=2mm
Phantom	Flat Plane
Device Position	Back
Band	WLAN(5.6GHz)_802.11a -ANT2
Channels	High
Signal	Duty Cycle: 1:1

B. SAR Measurement Results

Frequency (MHz)	5700.000000
Relative Permittivity (real part)	36.452911
Conductivity (S/m)	5.114268
Power Variation (%)	-1.664700
Ambient Temperature	22.3
Liquid Temperature	22.3

C. SAR Surface and Volume



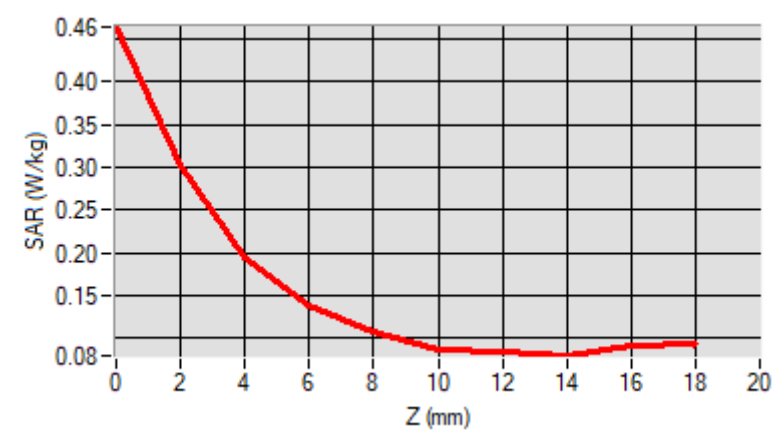
Maximum location: X=-8.00, Y=33.00

D. SAR 1g & 10g

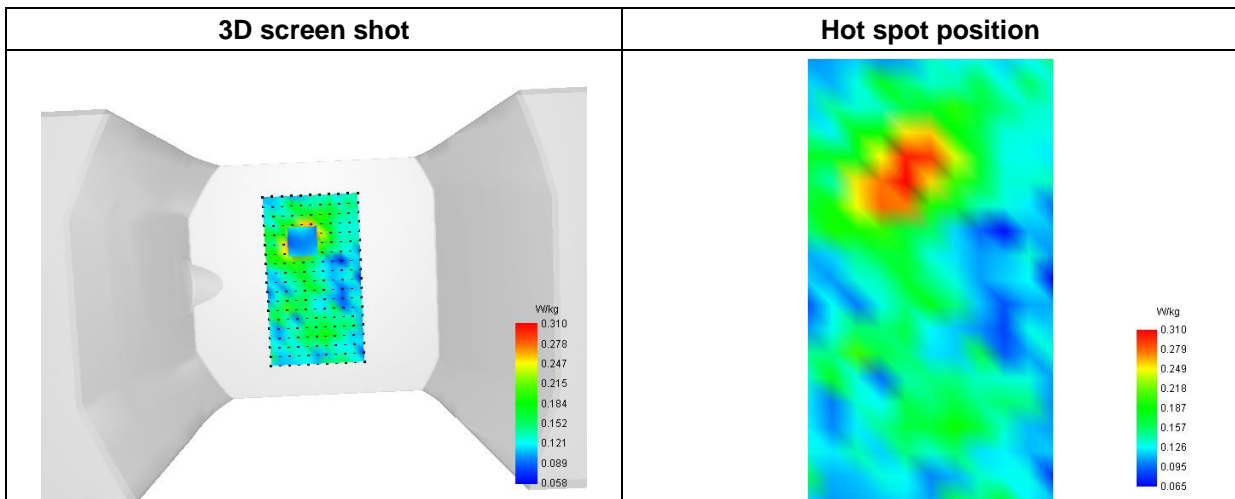
SAR 10g (W/Kg)	0.143763
SAR 1g (W/Kg)	0.224525

E. Z Axis Scan

Z (mm)	0.00	2.00	4.00	6.00	8.00	10.00	12.00	14.00	16.00	16.00
SAR (W/Kg)	0.4638	0.3025	0.1946	0.1395	0.1086	0.0897	0.0855	0.0792	0.0903	0.0903



F. 3D Image



MEASUREMENT 38

Type: Phone measurement (Complete)

Date of measurement: 2023-08-11

Measurement duration: 12 minutes 3 seconds

E-field Probe: SSE2 - SN 18/21 EPGO356; ConvF: 2.15; Calibrated: 2023-07-07

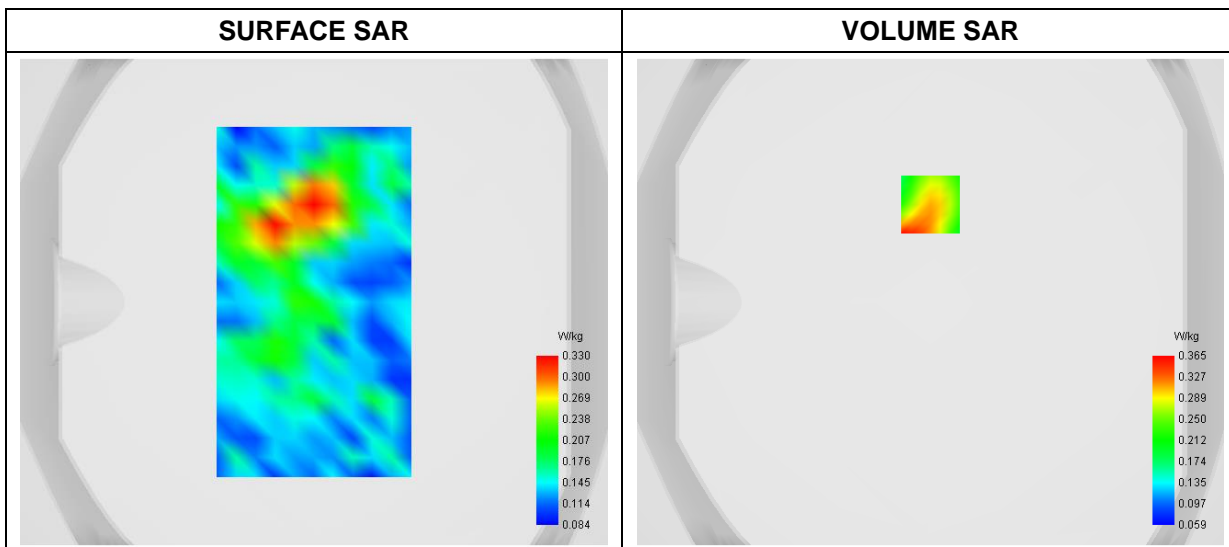
A. Experimental conditions

Area Scan	dx=8mm dy=8mm
Zoom Scan	dx=4mm dy=4mm dz=2mm
Phantom	Flat Plane
Device Position	Front
Band	SRD(5.8GHz)_802.11a-ANT2
Channels	Low
Signal	Duty Cycle: 1:1

B. SAR Measurement Results

Frequency (MHz)	5745.000000
Relative Permittivity (real part)	36.613247
Conductivity (S/m)	5.232715
Power Variation (%)	-0.174800
Ambient Temperature	22.3
Liquid Temperature	22.3

C. SAR Surface and Volume



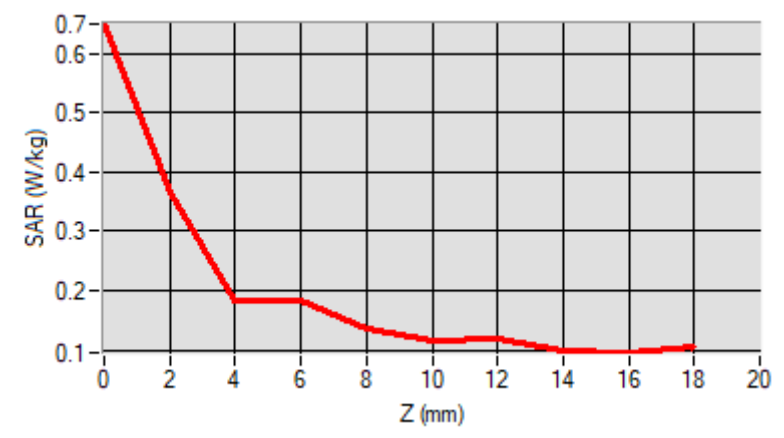
Maximum location: X=0.00, Y=40.00

D. SAR 1g & 10g

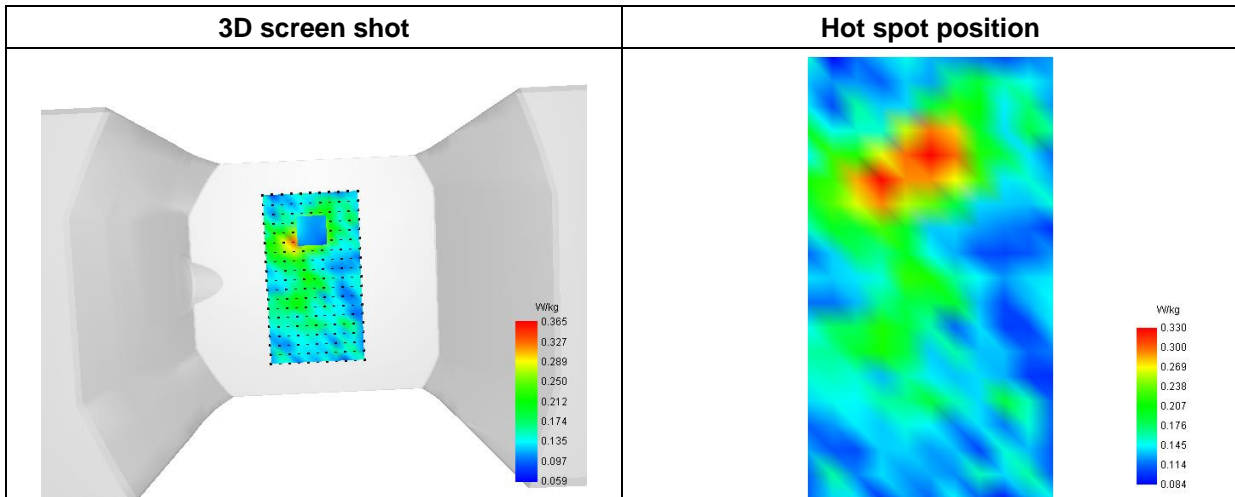
SAR 10g (W/Kg)	0.155208
SAR 1g (W/Kg)	0.234330

E. Z Axis Scan

Z (mm)	0.00	2.00	4.00	6.00	8.00	10.00	12.00	14.00	16.00	18.00
SAR (W/Kg)	0.6503	0.3653	0.1818	0.1815	0.1373	0.1157	0.1196	0.1041	0.0941	



F. 3D Image



MEASUREMENT 39

Type: Phone measurement (Complete)

Date of measurement: 2023-08-18

Measurement duration: 12 minutes 3 seconds

E-field Probe: SSE2 - SN 18/21 EPGO356; ConvF: 2.29; Calibrated: 2023-07-07

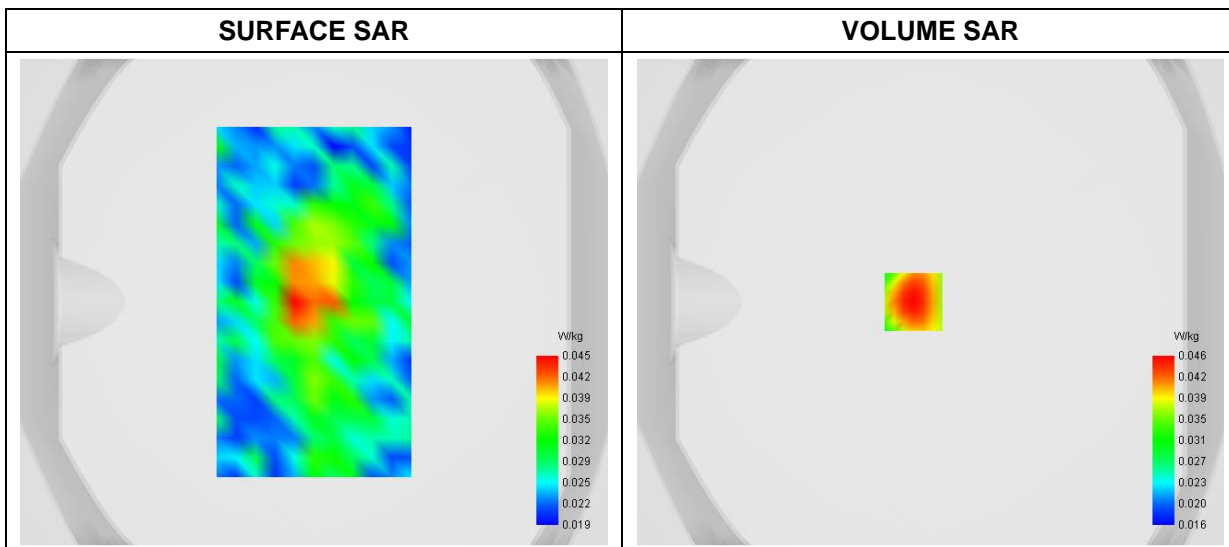
A. Experimental conditions

Area Scan	dx=8mm dy=8mm
Zoom Scan	dx=4mm dy=4mm dz=2mm
Phantom	Flat Plane
Device Position	Back
Band	Bluetooth
Channels	Low
Signal	Duty Cycle: 1:1

B. SAR Measurement Results

Frequency (MHz)	2480.000000
Relative Permittivity (real part)	40.562089
Conductivity (S/m)	1.844335
Power Variation (%)	-1.5784000
Ambient Temperature	23.1
Liquid Temperature	23.1

C. SAR Surface and Volume



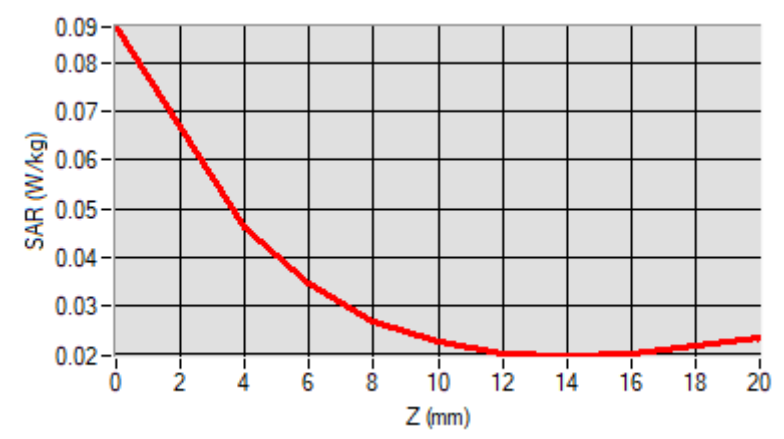
Maximum location: X=-7.00, Y=0.00

D. SAR 1g & 10g

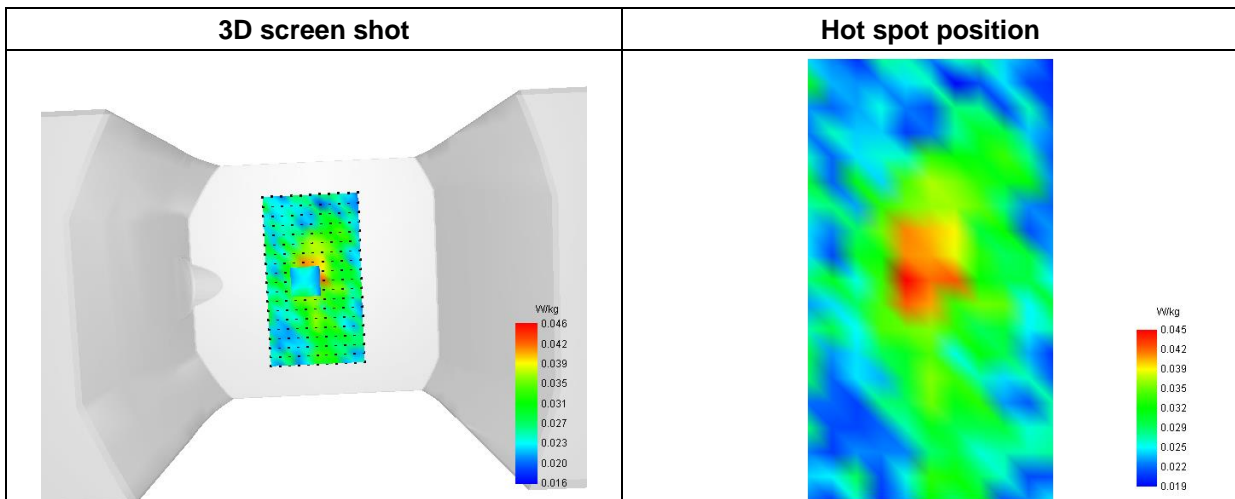
SAR 10g (W/Kg)	0.031466
SAR 1g (W/Kg)	0.046579

E. Z Axis Scan

Z (mm)	0.00	4.00	6.00	8.00	10.00	12.00	14.00	16.00	18.00
SAR (W/Kg)	0.0875	0.0463	0.0346	0.0267	0.0229	0.0206	0.0195	0.0206	0.0214



F. 3D Image

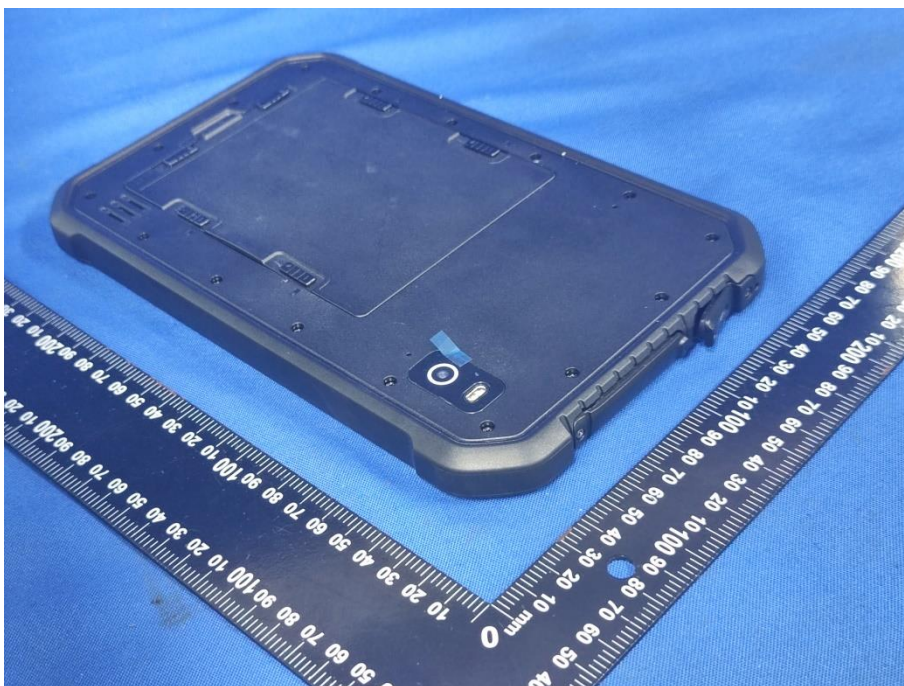


Annex C. EUT Photos

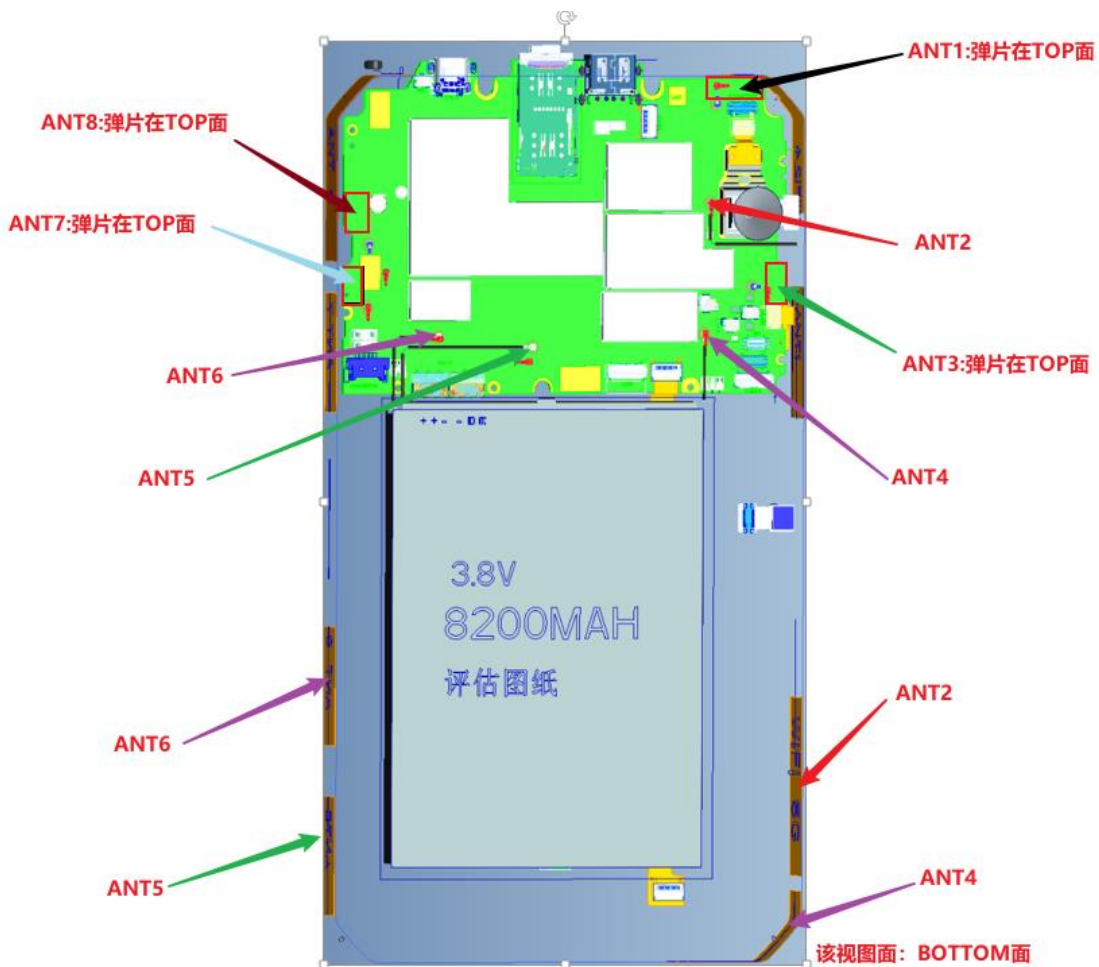
EUT View 1



EUT View 2



Antenna View



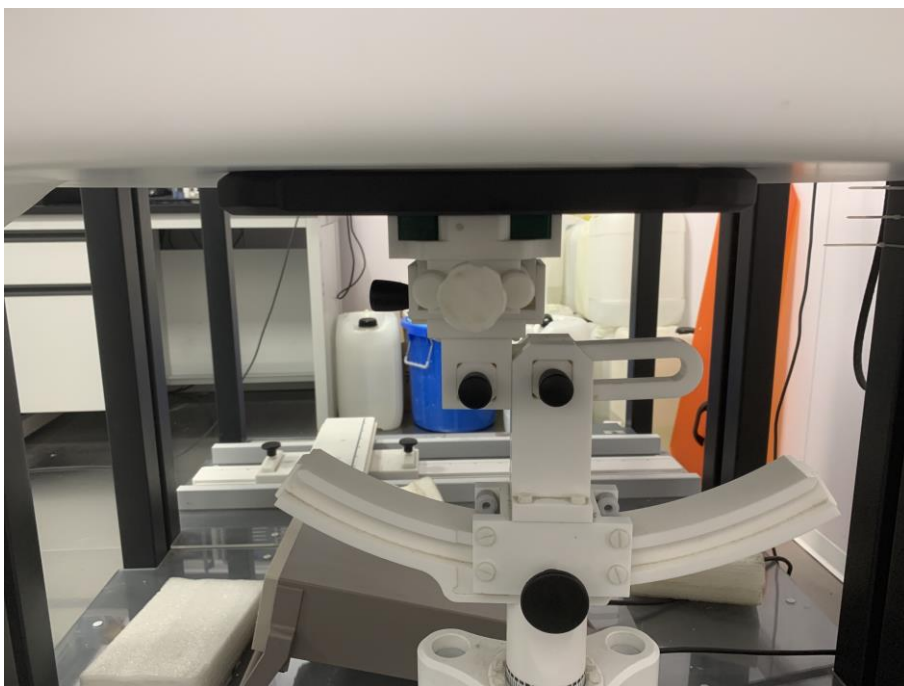
Annex D. Test Setup Photos

Body mode Exposure Conditions
Test distance: 0mm

Body Front



Body Back



Body Right



Body Left



Body Top



Body Bottom



Annex E. Calibration Certificate

Please refer to the exhibit for the calibration certificate

******* END OF REPORT *******