

Cumbror

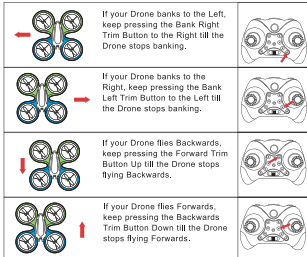
AGES 14+



REMOTE CONTROL QUADCOPTER INSTRUCTION MANUAL

FLIGHT ADJUSTMENT SECTION

When you lift your Drone into the air, without the use of any control levers, it should HOVER in one spot. If it doesn't, you can follow the instructions below to bring your Drone back to a perfect HOVER.



7

IMPORTANT INSTRUCTION

- 1.This product is not a toy but a precision equipment with integrated mechanics and electronics. This product requires expertise in aerodynamics and high-frequency transmitting. This product needs to be correctly assembled and debugged to avoid accidents. The product owner should operate and control it in as safe manner. Please note that we are not liable or responsible for any accidents that may result in injury, damage, or loss of property. We urge you to handle with care.
- 2.This product is suitable for users that have prior operating experience or users no less than the age 14.
- 3.The flying ground suggested is an open space that is legally viable for remote drone control.
- 4.If you encounter any problems while operating or repairing this product, kindly contact us . You can find our contact information in the warranty section. We will provide you with the technical support and after-sale service.
5. To avoid the drone losing control, we recommend indoor use only!

SAFETY & CAUTIONS

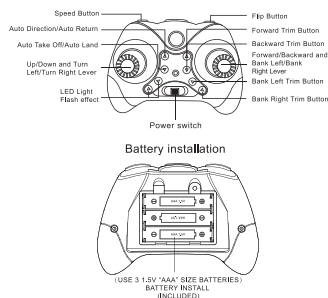
- 1.Keep away from large groups or gatherings .
- 2.Keep away from damp environments.
- 3.Use this product carefully and avoid operating on your own.
- 4.Keep propellers away from heat sources.

CONTENTS

- Quad Copter x 1
- Transmitter x 1
- USB Charging Cable x 2
- Spare Blades x 4
- Screwdriver x 1
- Lithium-Ion Batteries x 3
- 1.5V AAA Batteries x 3
- Instruction Manual x 1

2

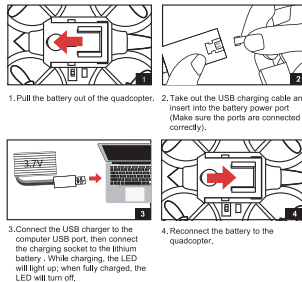
GET TO KNOW YOUR TRANSMITTER



3

1. Different types of batteries or new and used batteries cannot be mixed.
2. Batteries must be inserted with the correct polarity.
3. Exhausted batteries need to be removed from the toy.
4. The supply terminals cannot be short-circuited.
5. Open the battery cover with the screwdriver.

HOW TO CHARGE QUADCOPTER BATTERY



4

**Charging time: about 50 minutes.
Flying time: about 6-8 minutes!**

Notel Always charge the battery by using the USB port from your computer and not a telephone or tablet wall charger. Charging by using power socket can cause fire! Always keep watch while charging.

AUTO DIRECTION/AUTO RETURN

Sometimes when you fly your drone at a distance, it may be hard to see what direction it is facing and this can make it very hard to control. If you want to make your drone controls simpler when you first start flying, or if you are going on a long distance flight, the AUTO DIRECTION mode can help. Quick press the AUTO DIRECTION/AUTO RETURN button, and wait till you hear two BEEPS, the lights on the drone will also flash. You are now in AUTO DIRECTION mode. In AUTO DIRECTION mode, whatever direction the drone is facing, pushing forward will fly it away from you, and pushing backwards will fly it towards you, making it simpler to fly. To exit the mode, press the button again, the controller will make a BEEP sound and the drone will stop flashing.

This drone also has an AUTO RETURN button that will return the drone back in your direction at any point during flight. To activate AUTO RETURN just long press and hold the AU TO DIRECTION/AUTO RETURN button. WARNING: For the AUTO RETURN button to work, you must remain facing the same position you were in when you connected the drone. If you have changed your initial direction, the drone will return to the wrong position when you press the button. Also the drone will not stop flying when it gets to your position and you will have to stop it manually by pushing the Forward direction.

TROUBLE SHOOTING

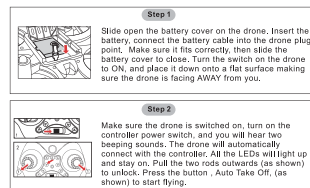
Problem	Reason	Solution
No response from the quadcopter	1. Quadcopter battery power is not enough. 2. Transmitter battery power is not enough. 3. The band of the transmitter does not correspond to the decoding of the quadcopter.	1. Charge the quadcopter 2. Charge or replace them if required 3. Adjust the band on the transmitter and replace it with the same as the quadcopter.
If the quadcopter is slow to respond or difficult to maneuver	1. Insufficient power with the transmitter. 2. Transmitter of the same frequency is used nearby.	1. Replace the battery; 2. Use the helicopter out of the range of other RC quadcopter.

10

CAUTIONS WHEN CHARGING

1. When charging, please put this product in a dry or well ventilated area. Keep it away from any heat sources or explosive products.
2. Before charging, remove the batteries from the quadcopter. Charging process should be supervised by an adult to prevent an accident.
3. After flying, please do not charge the battery if the surface temperature is still not cool. Otherwise it may cause the battery to swell, this could be a fire hazard.
4. Please make sure that you use the original USB charging cable provided. If the battery has been used for a long time, or appears to be swollen, please replace them.
5. If you do not play with the quadcopter for a long time, please remove the battery.

READY TO FLY YOUR QUADCOPTER



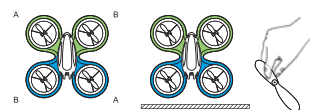
5

BATTERY REPAIR & MAINTENANCE

1. Battery should be put in the dry or well ventilated area with a room temperature of about 18-25°C.
2. In order to prolong the battery life, please avoid repeatedly charging or excessive discharging.
3. If the battery needs to be stored away for while, please charge the battery first. The battery needs to be charged to at least 50-60% of its capacity.
4. If you do not use it for more than a month, it is highly recommended that you need to check the battery voltage every month to make sure the voltage is no less than 3V. Otherwise please do not follow step NO. (3).

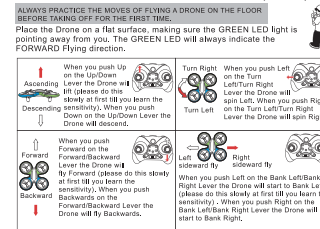
BLADE REPLACEMENT INSTRUCTION

The quadcopter comes with replacement blades, if the originals are broken or badly damaged. It is extremely important to use the correct blade (A or B) for replacement. The marking can be found on the blades. Using the incorrect blade will make it impossible to control the quadcopter. (Assembly of the blades: Clip the small cap of the blade, and then aim at the shaft of the motor and press it, it may require a little force. Please be careful so you don't break it.)



11

FLIGHT CONTROL



6

SPEED CONTROL

The first time you turn on the drone, the initial speed is set to 40%. You will hear ONE beep. When you press the SPEED BUTTON, you will hear TWO beeps which will increase the speed level to 60%. Pressing the SPEED BUTTON again you will hear THREE beeps and this will increase the level to 100%. Pressing again will bring you back to 40% speed and you will hear ONE beep. Always learn to fly at 40% speed, and then you can increase it as you get better at flying.

EMERGENCY STOP

Hold the speed button for 3 seconds for an emergency stop.



WARRANTY

Feel free to contact us if you have any problems!

☎ 1-888-281-4150 (for week days)

✉ support@mmruth.com (24/7)

Your feedback is important to us: [Go to your order page and share your thoughts.](#)

BONUS: Get an extra 3-year warranty by sending your order # to support@mmruth.com.

30 → 30 DAYS FREE RETURN & REPLACEMENT	2 → 2 YEAR Product Warranty (If any problems with quality are found, we will provide a free replacement.)	Lifetime Customer Support
--	--	------------------------------

MADE IN CHINA

12

Federal Communications Commission (FCC) Statement

This device complies with part 15 of the FCC Rules. Operation is subject to the following two conditions: (1) This device may not cause harmful interference, and (2) this device must accept any interference received, including interference that may cause undesired operation.

Note: This equipment has been tested and found to comply with the limits for a Class B digital device, pursuant to part 15 of the FCC Rules. These limits are designed to provide reasonable protection against harmful interference in a residential installation. This equipment generates, uses and can radiate radio frequency energy and, if not installed and used in accordance with the instructions, may cause harmful interference to radio communications. However, there is no guarantee that interference will not occur in a particular installation. If this equipment does cause harmful interference to radio or television reception, which can be determined by turning the equipment off and on, the user is encouraged to try to correct the interference by one or more of the following measures:

- Reorient or relocate the receiving antenna.
- Increase the separation between the equipment and receiver.
- Connect the equipment into an outlet on a circuit different from that to which the receiver is connected.
- Consult the dealer or an experienced radio/TV technician for help.

Warning: Changes or modifications made to this device not expressly approved by Shenzhen Diwen Jewelry Co., Ltd may void the FCC authorization to operate this device.

Note: The manufacturer is not responsible for any radio or TV interference caused by unauthorized modifications to this equipment. Such modifications could void the user's authority to operate the equipment.