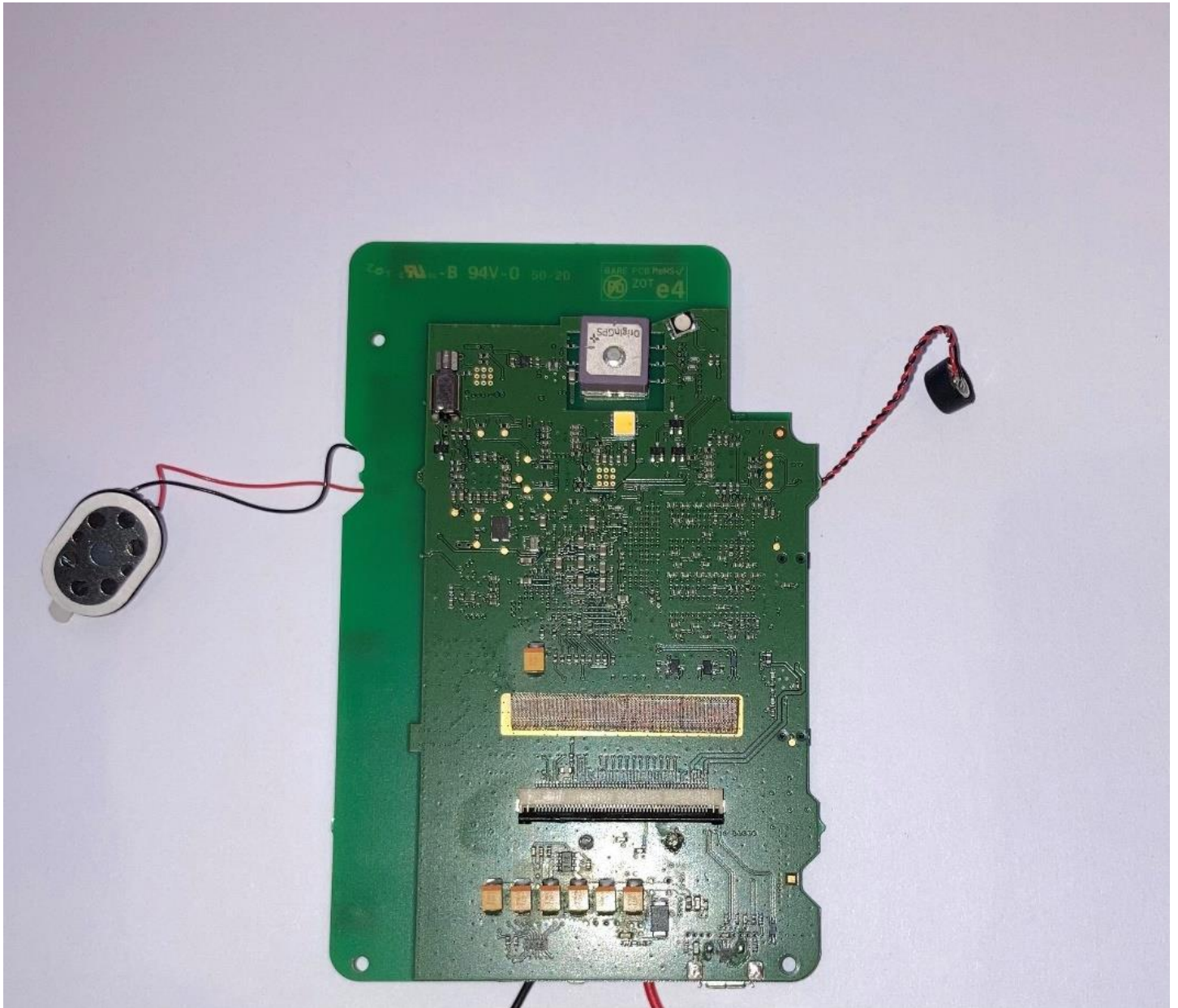


Main PCB rear side



Front side Main PCB with EMC shield cans removed



Front side Main PCB with EMC shield cans Fitted, installed in housing



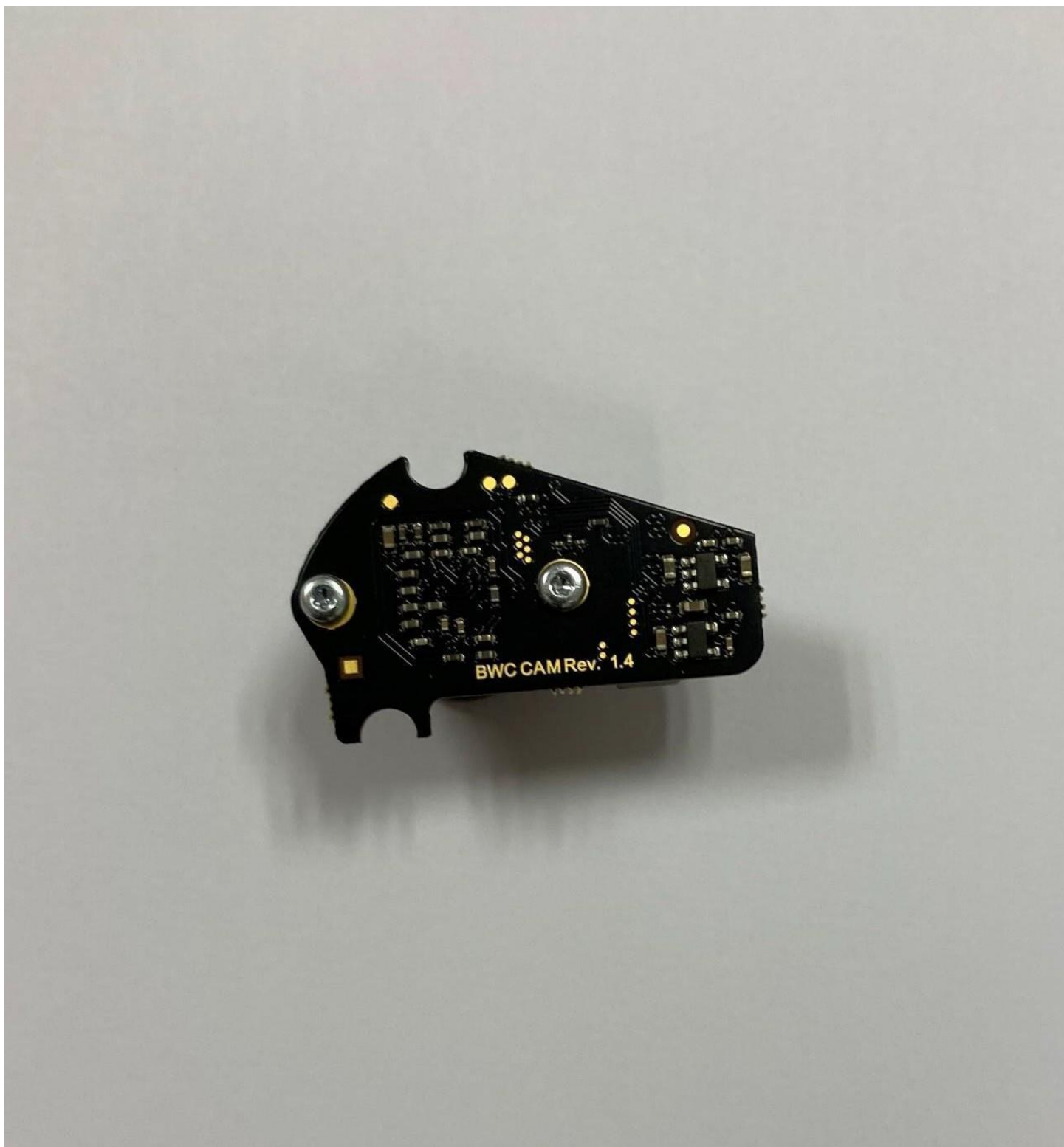
Front Screen installed in housing



Camera module installed on to Main PCB



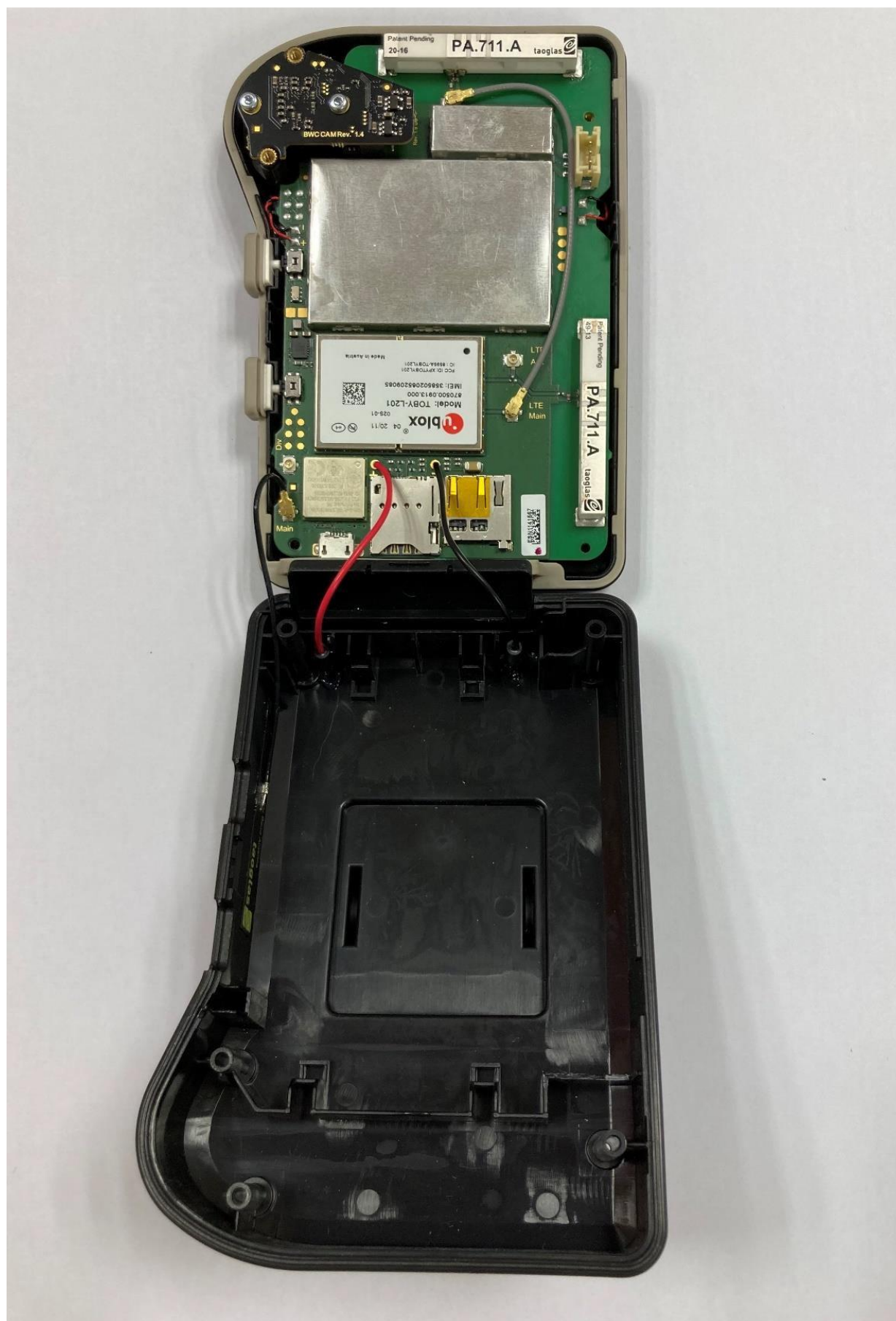
Camera Module Rear



Camera module front



Rear Housing attached to charging wires to Main PCB



Wi-Fi/BT Antenna



View with Internal Battery



Internal Battery Placed in Housing

