

WiFi SMART PLUG OPERATIONS GUIDE

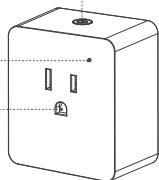


Product Description

Switch / Distribution network button
Short press is on/off, long press for 5 seconds is the distribution network

Indicator light

Jack area
(Protective door)



Indicator description

- The indicator light is on, indicating that the socket is powered on.
- The indicator is off, indicating that the socket is powered off.
- The indicator light flashes quickly (2 times per second), indicating that the socket enters the distribution mode.

Specification

Name	SMART PLUG
Size	63x54.5x34mm
Rated Voltage	100~250V AC
Input Frequency	50-60Hz
WiFi	2.4G
WiFi Range	100 feet/ 50M, Built-in antenna
Max Current:	125V/15A;250V/10A

Attention

1. Please use in a dry environment.
2. The maximum load described in the manual is a resistive load; the maximum power of a capacitive or inductive load is one-third of the resistive load.

Main feature

- Remote control**
APP remote control socket (on/off)
- Voice control**
Support a variety of AI smart speaker voice control (Note: need to use with smart speakers)
- Timing setting**
Timing function: set time to open / close the socket
- Countdown**
Set the product to turn on/off after a certain time
- Offline timing**
Local memory task, still executed according to the original settings after disconnection

Warranty Explain

Thank you for purchasing this product. In order to protect your rights, please read the following items carefully: According to national policy standards, our company's product warranty period is 1 year (Calculated from the date of purchase, Unable to verify the date of purchase, subject to the date of manufacture). Within warranty period, Our company will give a free warranty for any malfunction caused by the quality of the product itself under normal circumstances.

Mobile APP download

1. Scan the QR code with your phone.
2. Or search for "Cloud Intelligence" Download and install in the APP store, application market.
3. Sign up and log in to the "Cloud Intelligence APP".



Support ios Android



Pairing operation

When the product is connected to the power supply, the indicator light flashes rapidly (2 times per second)

Note: If the indicator light does not flash into the blue light, you can press and hold the key for 5 seconds.

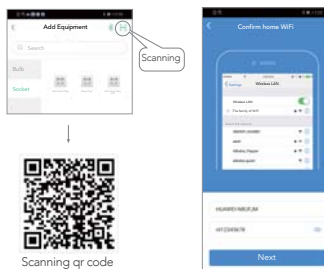
Add device: (for Android as an example)

1. Make sure the phone is connected to WiFi (only 2.4G WiFi network is supported) Click the "+" button in the upper right corner of the homepage to add the device.



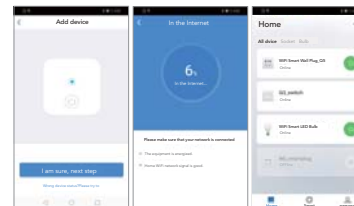
Pairing operation

1. Select Scan QR code from the add device (make sure the socket indicator is flashing quickly); enter the WiFi password, click "Next".



Pairing operation

1. Click "I am sure, next step", waiting for the connection, after the distribution network is successful, I will add a socket control function to my device.



Items list

- WiFi smart socket x 1
- Operations Guide x 1

Statement

The contents of this manual are subject to change due to product version upgrade or other reasons. Our company reserves the right to modify the contents of this manual without any notice or prompt. This manual is intended as a guide only. We do our best to provide accurate information in this manual. However, we do not ensure that the contents of this manual are completely error-free. All statements, information and recommendations in this manual do not constitute any express or implied guarantee.

FCC Warning:

Any Changes or modifications not expressly approved by the party responsible for compliance could void the user's authority to operate the equipment.

This device complies with part 15 of the FCC Rules. Operation is subject to the following two conditions: (1) This device may not cause harmful interference, and (2) this device must accept any interference received, including interference that may cause undesired operation.

Note: This equipment has been tested and found to comply with the limits for a Class B digital device, pursuant to part 15 of the FCC Rules. These limits are designed to provide reasonable protection against harmful interference in a residential installation. This equipment generates uses and can radiate radio frequency energy and, if not installed and used in accordance with the instructions, may cause harmful interference to radio communications. However, there is no guarantee that interference will not occur in a particular installation. If this equipment does cause harmful interference to radio or television reception, which can be determined by turning the equipment off and on, the user is encouraged to try to correct the interference by one or more of the following measures:

- Reorient or relocate the receiving antenna.
- Increase the separation between the equipment and receiver.
- Connect the equipment into an outlet on a circuit different from that to which the receiver is connected.
- Consult the dealer or an experienced radio/TV technician for help.

FCC Radiation Exposure Statement:

This equipment complies with FCC radiation exposure limits set forth for an uncontrolled environment.

This equipment should be installed and operated with minimum distance 20cm between the radiator&your body.

This transmitter must not be co-located or operating in conjunction with any other antenna or transmitter.