

[illegible]

A white, rectangular, heavy-duty plastic container, likely a medical or laboratory specimen cooler, shown from a side profile. It features a central handle, multiple latches along the top edge, and a small circular port on the right side.



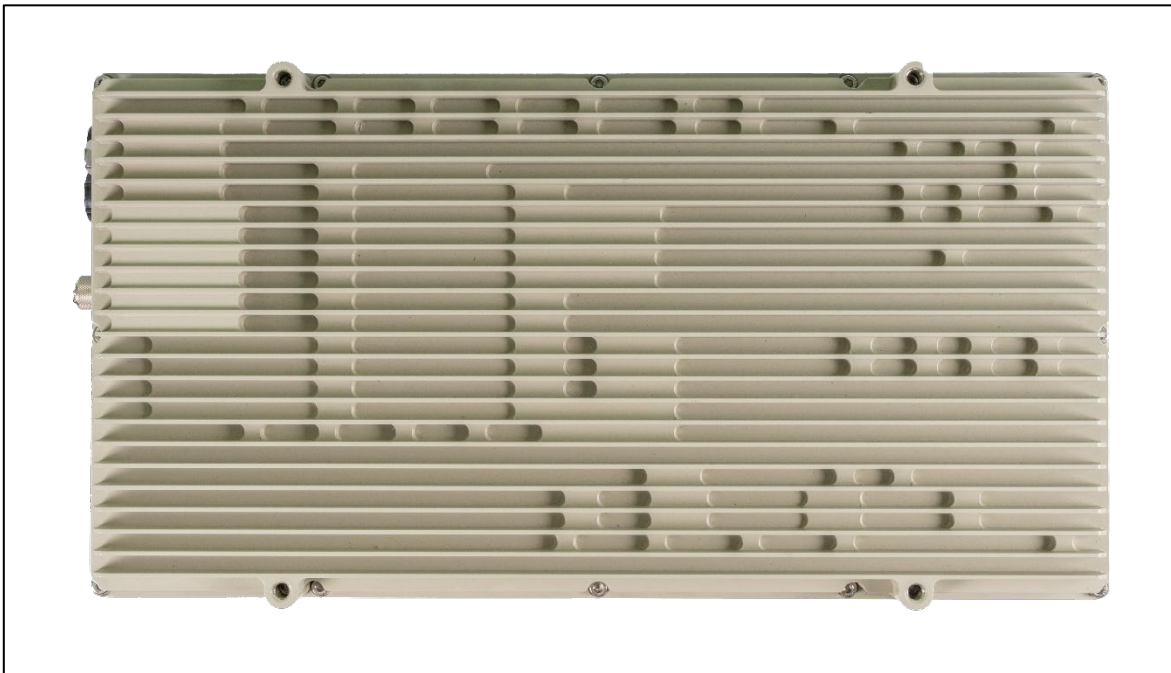
The rear panel of the module features several connectors and status indicators. From left to right, these include: a GPS antenna connector, an optical port, a status indicator with three LEDs (labeled DIV-9-32, 100%, and 100%), a USB connector, a power connector, an RJ45 internet connector, and an RF-out connector. The panel is labeled with 'GPS', 'OPTICAL', 'STATUS', 'USB', 'POWER', 'RJ45 INTERNET', and 'RF-OUT'. A small metal bracket is attached to the bottom center of the panel.

Bottom view





Front view



Rear view