

USER'S MANUAL



AeroBand | PocketDrum

DL-1903A

ON-OFF

A round button which is on the surface of the PocketDrum.

- Click to start-up
- Long press for 3 seconds or above to shut down the device.



INDICATOR LIGHT

The light around the power button

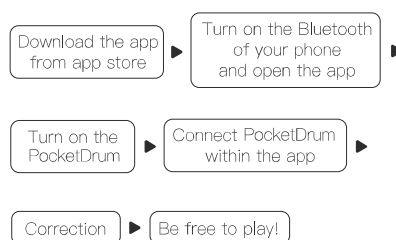
Status	Blinking white light	Flashing light turning out	Quick flashing and turning out	BLN
Meaning	Waiting for connecting	Connected with devices	Need charging	charging

CHARGING

Ring button light status	Flashing red light	Red light	White BLN	White light
Meaning	Extremely low battery	Low battery	Charging	Full charged

For battery life extending, you could check the battery level through connecting to the app but could not use it during charging.

FLOW



About the way of correction:

Place your forearms side by side and face the screen, point the PocketDrum's tips towards the screen, click the power button, then the virtual drum set will 'generate in the air' and you can now have fun playing it.



APPLICATION

To connect with PocketDrum, you need to download the relevant application program from app store and then connect with it through our app. The PocketDrum can't be connected to your phone through the Bluetooth in the system settings.

The first connection

1. Download AeroBand application program from the Apple App Store or other app Store.
2. Follow the onscreen instructions and connect your device with AeroBand.



Note:

When using the app for the first time, please be sure to allow the app to access the Bluetooth from the device. Some devices may also need permissions to the GPS because of the Bluetooth mode, otherwise the PocketDrum will not be able to connect with.

CONNECTION

Open the home page of the app and connect it according to the instructions.

Please have your phone's Bluetooth switched on.
The PocketDrum can only be uncovered and recognized by your phone when the indicator light is blinking.

PocketDrum cannot be connected through your phone's system settings, please connect it in the app

FAQ

1. About the connection

First, make sure that you are not connecting through your phone's system settings (please connect in the AeroBand App).

Some devices of Android need to open the positioning function (GPS) during the connection process, and you can close it as soon as the devices connected successfully.

During the connection process, please place the PocketDrum as close as possible to your phone.

If you still cannot connect yet, you could close the app and reopen it, and restart the Bluetooth.

2. About cannot precisely hit the drum-head you want

Why you can't reach the drum you want? Or why when you try to hit one drum-head but another one goes on?

Maybe it's because you are not familiar with the correct gestures, then you will need the following tips:

Open the app and learn from the teaching video that how to hit the different drum-heads in different positions and gestures.

If you are familiar with them, maybe it's because of the correction:

Calibrate the PocketDrum according to the notes in the app. The PocketDrum needs correction each time after switched to another mode or after your body or hands have moved. Drift error may also occurred after a long-time playing, then you need to re-correct the PocketDrum.

About the way of correction:

Place your forearms side by side and face the screen, point the PocketDrum's tips towards the screen, click the power button, then the virtual drum set will 'generate in the air' and you can now have fun playing it.

3. About battery

If is fully charged, the PocketDrum's duration of use is 8 hours and the standby time could be more than 30 days.

The duration of use could be increased considerably if turned off the "Vibration" function in the application.

4. About the function of waterproof

PocketDrum is a portable music product but is not waterproof. So please keep it away from water and moist!

This equipment has been tested and found to comply with the limits for a Class B digital device, pursuant to part 15 of the FCC Rules. These limits are designed to provide reasonable protection against harmful interference in a residential installation. This equipment generates, uses and can radiate radio frequency energy and, if not installed and used in accordance with the instructions, may cause harmful interference to radio communications. However, there is no guarantee that interference will not occur in a particular installation. If this equipment does cause harmful interference to radio or television reception, which can be determined by turning the equipment off and on, the user is encouraged to try to correct the interference by one or more of the following measures:

- Reorient or relocate the receiving antenna.
- Increase the separation between the equipment and receiver.
- Connect the equipment into an outlet on a circuit different from that to which the receiver is connected.
- Consult the dealer or an experienced radio/TV technician for help.

Caution: Any changes or modifications to this device not explicitly approved by manufacturer could void your authority to operate this equipment.

This device complies with part 15 of the FCC Rules.

Operation is subject to the following two conditions:

(1) This device may not cause harmful interference, and (2) this device must accept any interference received, including interference that may cause undesired operation.

The device has been evaluated to meet general RF exposure requirement. The device can be used in portable exposure condition without restriction.