

FCC WARNING

This device complies with part 15 of the FCC Rules. Operation is subject to the following two conditions: (1) this device may not cause harmful interference, and (2) this device must accept any interference received, including interference that may cause undesired operation.

Any changes or modifications not expressly approved by the party responsible for compliance

could void the user's authority to operate the equipment.

NOTE: This equipment has been tested and found to comply with the limits for a Class B digital device, pursuant to Part 15 of the FCC Rules.

These limits are designed to provide reasonable protection against harmful interference in a residential installation. This equipment generates, uses and can radiate radio frequency energy and, if not installed and used in accordance with the instructions, may cause harmful interference to radio communications. However, there is no guarantee that interference will not occur in a particular installation. If this equipment does cause harmful interference to radio or television reception,

which can be determined by turning the equipment off and on, the user is encouraged to try to correct the interference by one or more of the following measures:

- Reorient or relocate the receiving antenna.
- Increase the separation between the equipment and receiver.
- Connect the equipment into an outlet on a circuit different from that to which the receiver is connected.
- Consult the dealer or an experienced radio/TV technician for help.

The device has been evaluated to meet general RF exposure requirement

. The device can be used in portable exposure condition without restriction

TRUE WIRELESS STEREOBUDS

User Manual



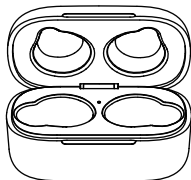
Made in China



PACKAGE INCLUDED



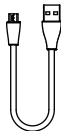
2 Wireless Earbuds



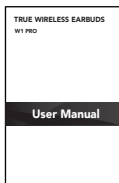
1 Charging Case



Extra S/L Ear Caps



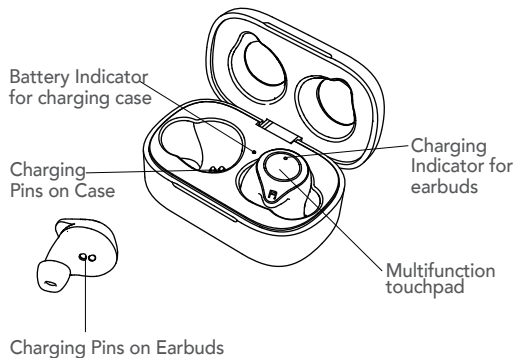
1 Type-C USB Cable



User Manual



INTRODUCTION



HOW TO WEAR



1. Insert the earbuds into the inner canal of your ears.
2. Turn and find the most comfortable position.

SPECIFICATIONS

Wireless Version	V5.0
Chip Type	Qualcomm QCC3020
Earbud Battery	40mAh Li-polymer Battery
One Earbud Weight	4.5 g/0.16 oz
Charging Time for Earbud	1-1.5 H
Music Playing Time	6-8H (varies by volume level and content)
Talking Time	3-4H
Standby Time (including charging case)	300H
Charging Case Battery	250mAh Li-polymer Battery
Charging Time for Case	1-1.5 H
Charging Earbuds Times	3 Times
Operation Range	Up to 33 ft/10 m
Total Weight	43 g/1.51 oz
Pairing Name	W1-L/R
Waterproof Level	IPX 5

Note: the time mentioned above may vary due to user's operation mode and device setting.



TURN ON / OFF

- A: The earbuds switch on automatically when taken out of the charging case.
- B: The earbuds switch off automatically when placed back in the charging case.



Power on: Quick flashing green (Earbuds indicator)



PAIRING

1. For the first pairing, please put it back into charging case to activate it, and then take it out from the case. the earbuds will automatically power on. Both earbuds indicator will flash green (pending pairing status). Then search the BT device named "W1-L or W1-R" and click to connect separately. You will hear a voice prompt "Connected" once pairing successfully.

2. For IOS or Android phone, you will see each below Pop-ups

Bluetooth Pairing Request

"Headset" would like to pair with
your iPhone.

Cancel

Pair

(Apple Device)

Bluetooth Pairing

From:

W1-L / W1-R

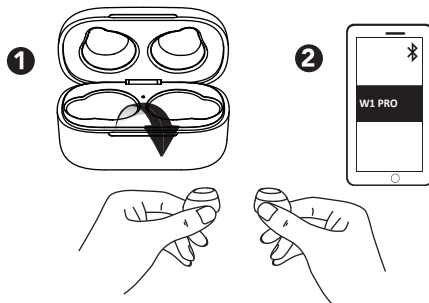
Pair up with the device?

Cancel

Pair

(Android Device)

3. You can use both earbuds simultaneously or independently (one in ear and one charging), just take all out for both use or one earbud for single use.



4. Re-connection: After earbuds connect with the phone successfully, every time the earbuds are taken from the charging case, it will automatically connect with the last connected phone.

Note:

1. The earbuds will automatically power off if they don't connect the device in 10mins.
2. The earbuds will be disconnected if beyond signal range. They will automatically reconnect the device if back in working range in 30 seconds, otherwise you need manually tap the touchpad once for reconnection and then tap once for normal playing, it will power off if they don't connect the device in 10mins.
3. If the earbuds didn't pair successfully on current device, please delete the previous pair record on your last device, put both earbuds back to charging case. Then pair them again like previous steps.

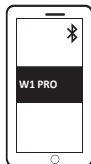


RESET

1



3



2



Reset the earbuds if you can only hear one earbud or earbuds cannot connect to your device.

1. Put both earbuds back to charging case and close the charging case cover. Delete the "W1-R"/"W1-L" from the device pairing record. Then take the earbuds out again.
2. Press both earphones for 9 times to restore the factory Settings. After hearing the prompt sound, the green light flashes continuously to enter the repairing state, until the pairing is successful.
3. Turn on the BT on your device and select "W1-R/W1-L" to connect.



CONTROLS



L/R



Tap Once

Play/Pause



Tap the right touchpad twice

Next Track



Tap the left touchpad twice

Previous Track



Tap and hold the touchpad for 2 seconds

Volume up(R)



Tap and hold the touchpad for 2 seconds

Volume down(L)



L/R



Tap Once

Answer call

L/R



Tap twice

End call/Reject call



L/R



Tap touchpad three times

Activate Siri/other voice control assistant.



CHARGING



To preserve battery lifespan, please fully charge it once a month if not used for a long time.



Green means charging case has enough power level (>20%); Yellow means less than 20% power level

Steady Red---Charging Off-Fully Charged

Charging case indicator (connected to power source)



Flashing green

Charging



Steady green

Fully charged

Earbud status indicator (in charging case)



Flashing red

Low battery



Steady red

Charging

Off

Fully charged

TROUBLESHOOTING

Problems	Possible Causes	Solutions
Can not turn on	Low battery power of earbud	Charge earbuds for about 1.5H
No sound or low voice when calling	The media volume of mobile phone is adjusted to minimum/ noisy environment	Turn up volume of mobile phone or earbuds/change a different place
Earbud cannot charge/no indicator light when charging	Low battery of charging case / charging pins not connected	Charge both the case and earbuds for about 3.5H/adjust earbud position, ensure charging pin be well connected.
Disconnected sometimes or there are lags when calling or listening music	Low battery of earbuds/beyond operation range/ strong signal interference	Recharge earbuds/ the device shall be close to earbuds/ change another place.
Turn off automatically	Low battery	Recharge earbuds for 1.5H
No LED indicator when charging case	No power supply	Ensure the Type-C USB charging cable is plugged well.
Pairing failure	Not follow the pairing steps	Put the earbuds to charging case and pair it again. please keep the earbuds within 1 meter range from the device.

SAFE TIPS

1. Please read this manual carefully about how to properly use the earbuds before first use.
2. Fully Charge the earbuds along with the charging case before first use.
3. Keep the earbuds away from children or pets to avoid accidental ingestion.
4. Do not use the earbuds at a high volume for long-term use which may cause hearing injury.
5. Do not use output larger than 5V 1A charger which may damage battery.
6. Please use and store this product in normal temperature.