



Shenzhen Huaxia Testing Technology Co., Ltd.

1F., Block A of Tongsheng Technology Building, Huahui Road, Dalang Street, Longhua District, Shenzhen, China

Telephone: +86-755-26648640
Fax: +86-755-26648637
Website: www.cqa-cert.com

Report Template Version: V05
Report Template Revision Date: 2021-11-03

Test Report

Report No.: CQASZ20240100088E-01
Applicant: TV Ears Inc.
Address of Applicant: 2701 Via Orange Way Ste 1 Spring Valley, CA 91978
Equipment Under Test (EUT):
EUT Name: TV·Ears Long Range TV Speaker System
TV·Ears Long Range Mini Transmitter 2221,
Voice Clarifying TV Listening System 22741,
TV·Ears Long Range Headset 22621,
Model No.: TV·Ears Long Range TV Speaker System, TV Speaker Only,
TV Ears Headphone System - Long Range 5.8 System 22281,
TV Ears SafeT Sound Headphone 22622,
TV·Ears 5.8 GHz-Voice Clarifying Headphones Only 22212
Test Model No.: TV·Ears Long Range TV Speaker System
Brand Name: TV·Ears
FCC ID: 2AUOK-TVEA02
Standards: 47 CFR Part 15, Subpart C
Date of Receipt: 2024-1-8
Date of Test: 2024-1-8 to 2024-1-15
Date of Issue: 2024-1-24
Test Result: PASS*

Tested By: Lewis Zhou
(Lewis Zhou)

Reviewed By: Timo Lei
(Timo Lei)

Approved By: Jack Ai
(Jack Ai)



The test report is effective only with both signature and specialized stamp, The result(s) shown in this report refer only to the sample(s) tested. Without written approval of CQA, this report can't be reproduced except in full.

1 Version

Revision History Of Report

Report No.	Version	Description	Issue Date
CQASZ20240100088E-01	Rev.01	Initial report	2024-1-24

The report only embodies the test data of the 2# prototype

#1 refer to original test report NO.CQASZ20220400529E

The difference between product #1 and product #2 is that the An ADD red button is added to the PCB board, a switch is added to the right, and the power supply adapter is changed. The key differences are the appearance and the model number. These changes do not affect RF performance.

2 Test Summary

Test Item	Test Requirement	Test method	Result
Antenna Requirement	47 CFR Part 15, Subpart C Section 15.203	ANSI C63.10 (2013)	PASS
AC Power Line Conducted Emission	47 CFR Part 15, Subpart C Section 15.207	ANSI C63.10 (2013)	PASS
Field Strength of the Fundamental Signal	47 CFR Part 15, Subpart C Section 15.249 (a)	ANSI C63.10 (2013)	PASS
Spurious Emissions	47 CFR Part 15, Subpart C Section 15.249 (a)/15.209	ANSI C63.10 (2013)	PASS
Restricted bands around fundamental frequency (Radiated Emission)	47 CFR Part 15, Subpart C Section 15.249(a)/15.205	ANSI C63.10 (2013)	PASS
20dB Occupied Bandwidth	47 CFR Part 15, Subpart C Section 15.215 (c)	ANSI C63.10 (2013)	N/A

3 Contents

	Page
1 VERSION	2
2 TEST SUMMARY	3
3 CONTENTS	4
4 GENERAL INFORMATION	5
4.1 CLIENT INFORMATION	5
4.2 GENERAL DESCRIPTION OF EUT	5
4.3 TEST ENVIRONMENT AND MODE	7
4.4 DESCRIPTION OF SUPPORT UNITS	7
4.5 STATEMENT OF THE MEASUREMENT UNCERTAINTY	8
4.6 TEST LOCATION	9
4.7 TEST FACILITY	9
4.8 DEVIATION FROM STANDARDS	9
4.9 ABNORMALITIES FROM STANDARD CONDITIONS	9
4.10 OTHER INFORMATION REQUESTED BY THE CUSTOMER	9
4.11 EQUIPMENT LIST	10
5 TEST RESULTS AND MEASUREMENT DATA	11
5.1 ANTENNA REQUIREMENT	11
5.2 CONDUCTED EMISSIONS	12
5.3 RADIATED EMISSION	15
6 PHOTOGRAPHS	23
6.1 RADIATED EMISSION TEST SETUP	23
6.2 CONDUCTED EMISSION TEST SETUP	24
6.3 EUT CONSTRUCTIONAL DETAILS	25
*** END OF REPORT ***	35

4 General Information

4.1 Client Information

Applicant:	TV Ears Inc.
Address of Applicant:	2701 Via Orange Way Ste 1Spring Valley, CA 91978
Manufacturer:	DONGGUAN WISIC ELECTRONIC CO., LTD.
Address of Manufacturer:	Rm301, 2nd Building, No.5 Songyin Road, Tangxia Town, Dongguan City, Guangdong Province, China
Factory:	DONGGUAN WISIC ELECTRONIC CO., LTD.
Address of Factory:	Rm301, 2nd Building, No.5 Songyin Road, Tangxia Town, Dongguan City, Guangdong Province, China

4.2 General Description of EUT

EUT Name:	TV·Ears Long Range TV Speaker System
Model No.:	TV·Ears Long Range Mini Transmitter 2221, Voice Clarifying TV Listening System 22741, TV·Ears Long Range Headset 22621, TV·Ears Long Range TV Speaker System, TV Speaker Only, TV Ears Headphone System - Long Range 5.8 System 22281, TV Ears SafeT Sound Headphone 22622, TV·Ears 5.8 GHz-Voice Clarifying Headphones Only 22212
Test Model No.:	TV·Ears Long Range TV Speaker System
Trade Mark:	TV·Ears
Software Version:	V1.0
Hardware Version:	V1.0
Frequency Range:	5730MHz-5845MHz
Modulation Type:	GFSK
Number of Channels:	3
Sample Type:	<input checked="" type="checkbox"/> Mobile <input type="checkbox"/> Portable
Test Software of EUT:	RF Test
Antenna Type:	PCB antenna
Antenna Gain:	0 dBi
Power Supply:	Power by DC 5V 1A for Adapter Model: JK050100-S37USVU Input: 100-240V 50/60Hz 0.5A Output: 5V 1000mA

Operation Frequency each of channel					
Channel	Frequency	Channel	Frequency	Channel	Frequency
1	5730MHz	2	5780MHz	3	5845MHz

Note:

In section 15.31(m), regards to the operating frequency range over 10 MHz, the Lowest frequency, the middle frequency, and the highest frequency of channel were selected to perform the test, and the selected channel see below:

Channel	Frequency
The Lowest channel(CH1)	5730MHz
The Middle channel(CH2)	5780MHz
The Highest channel(CH3)	5845MHz

4.3 Test Environment and Mode

Operating Environment:	
Radiated Emissions:	
Temperature:	27 °C
Humidity:	59 % RH
Atmospheric Pressure:	1009mbar
Temperature:	26 °C
Humidity:	59 % RH
Atmospheric Pressure:	1009mbar
Radio conducted item test (RF Conducted test room):	
Temperature:	25.3 °C
Humidity:	55 % RH
Atmospheric Pressure:	1009mbar
Test mode:	
Transmitting mode:	Use test software (RF test) to set the lowest frequency, the middle frequency and the highest frequency keep transmitting of the EUT.

4.4 Description of Support Units

The EUT has been tested with associated equipment below.

1) Support equipment

Description	Manufacturer	Model No.	Certification	Supplied by
/	/	/	/	/

2) Cable

Cable No.	Description	Manufacturer	Cable Type/Length	Supplied by
/	/	/	/	/

4.5 Statement of the measurement uncertainty

The data and results referenced in this document are true and accurate.

The reader is cautioned that there may be errors within the calibration limits of the equipment and facilities.

The measurement uncertainty was calculated for all measurements listed in this test report acc. to CISPR 16 - 4 „Specification for radio disturbance and immunity measuring apparatus and methods – Part 4: Uncertainty in EMC Measurements“ and is documented in the **Shenzhen Huaxia Testing Technology Co., Ltd.** quality system acc. to DIN EN ISO/IEC 17025.

Furthermore, component and process variability of devices similar to that tested may result in additional deviation. The manufacturer has the sole responsibility of continued compliance of the device.

Hereafter the best measurement capability for **CQA** laboratory is reported:

Test	Range	Uncertainty	Notes
Radiated Emission	Below 1GHz	5.12dB	(1)
Radiated Emission	Above 1GHz	4.60dB	(1)
Conducted Disturbance	0.15~30MHz	3.34dB	(1)

(1) This uncertainty represents an expanded uncertainty expressed at approximately the 95% confidence level using a coverage factor of $k=2$.

4.6 Test Location

All tests were performed at:

Shenzhen Huaxia Testing Technology Co., Ltd.

1F., Block A of Tongsheng Technology Building, Huahui Road, Dalang Street, Longhua District, Shenzhen, China

4.7 Test Facility

- **A2LA (Certificate No. 4742.01)**

Shenzhen Huaxia Testing Technology Co., Ltd., Shenzhen EMC Laboratory is accredited by the American Association for Laboratory Accreditation(A2LA). Certificate No. 4742.01.

- **FCC Registration No.: 522263**

Shenzhen Huaxia Testing Technology Co., Ltd., Shenzhen EMC Laboratory has been registered and fully described in a report filed with the (FCC) Federal Communications Commission. The acceptance letter from the FCC is maintained in our files. Registration No.:522263

4.8 Deviation from Standards

None.

4.9 Abnormalities from Standard Conditions

None.

4.10 Other Information Requested by the Customer

None.

4.11 Equipment List


Test Equipment	Manufacturer	Model No.	Instrument No.	Calibration Date	Calibration Due Date
EMI Test Receiver	R&S	ESR7	CQA-005	2023/9/8	2024/9/7
Spectrum analyzer	R&S	FSU26	CQA-038	2023/9/8	2024/9/7
Preamplifier	MITEQ	AMF-6D-02001800-29-20P	CQA-036	2023/9/8	2024/9/7
Loop antenna	Schwarzbeck	FMZB1516	CQA-060	2023/9/8	2024/9/7
Bilog Antenna	R&S	HL562	CQA-011	2023/9/8	2024/9/7
Horn Antenna	R&S	HF906	CQA-012	2023/9/8	2024/9/7
Horn Antenna	Schwarzbeck	BBHA 9170	CQA-088	2023/9/8	2024/9/7
Coaxial Cable (Above 1GHz)	CQA	N/A	C007	2023/9/8	2024/9/7
Coaxial Cable (Below 1GHz)	CQA	N/A	C013	2023/9/8	2024/9/7
Antenna Connector	CQA	RFC-01	CQA-080	2023/9/8	2024/9/7
RF cable(9KHz~40GHz)	CQA	RF-01	CQA-079	2023/9/8	2024/9/7
Power divider	MIDWEST	PWD-2533-02-SMA-79	CQA-067	2023/9/8	2024/9/7

Note:

The temporary antenna connector is soldered on the pcb board in order to perform conducted tests and this temporary antenna connector is listed in the equipment list.

5 Test results and Measurement Data

5.1 Antenna Requirement

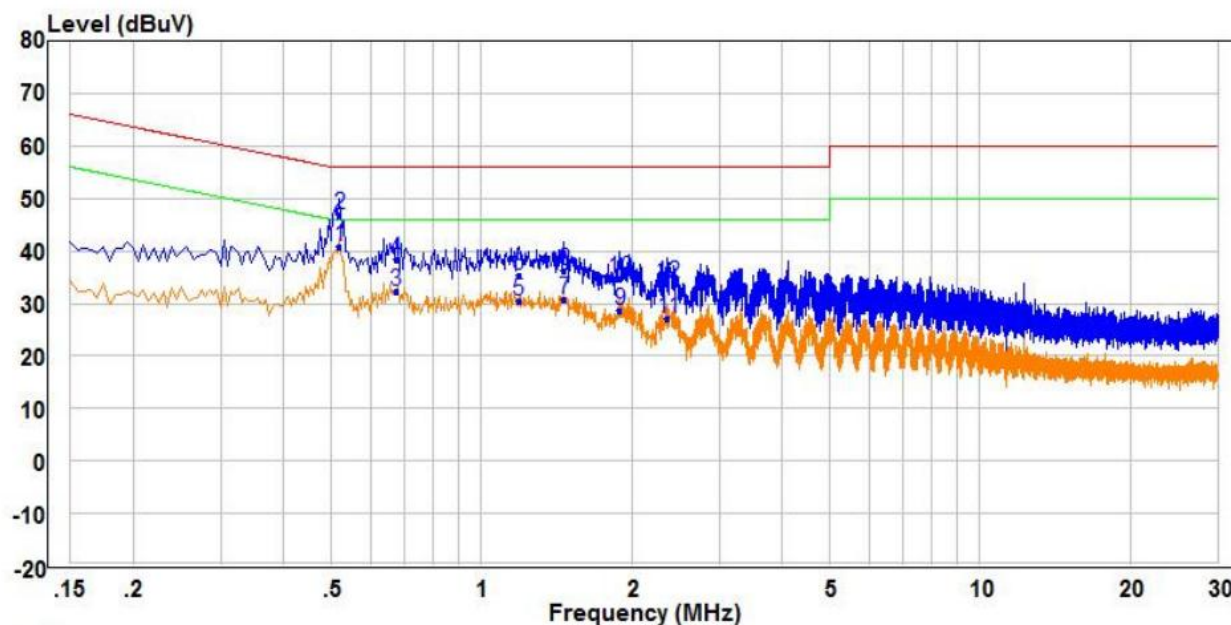
Standard requirement:	47 CFR Part 15C Section 15.203
<p>15.203 requirement: An intentional radiator shall be designed to ensure that no antenna other than that furnished by the responsible party shall be used with the device. The use of a permanently attached antenna or of an antenna that uses a unique coupling to the intentional radiator, the manufacturer may design the unit so that a broken antenna can be replaced by the user, but the use of a standard antenna jack or electrical connector is prohibited.</p>	
EUT Antenna:	
The antenna is PCB antenna. The best case gain of the antenna is 0dBi.	

Page:12 of 35

Test Mode:	Charge +Transmitting mode.
Final Test Mode:	Charge +Transmitting mode
Test Results:	Pass

Measurement Data:

Live line:

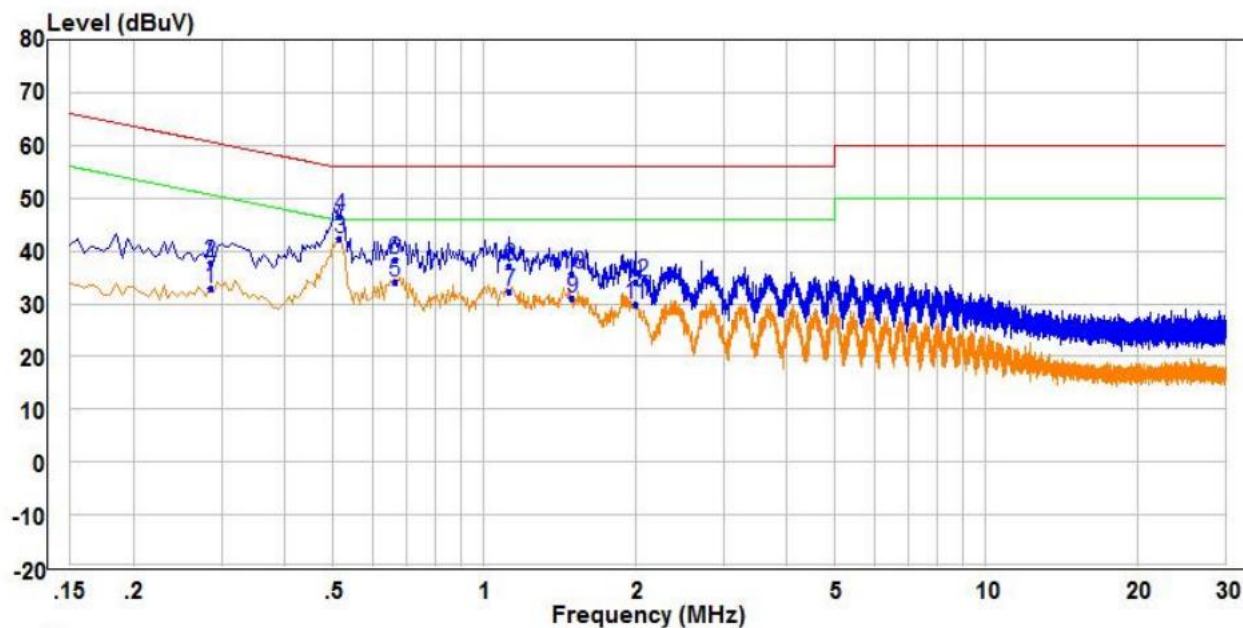


		Read			Limit	Over		
	Freq	Level	Factor	Level	Line	Limit	Remark	Pol/Phase
	MHz	dBuV	dB	dBuV	dBuV	dB		
1	PP	0.520	31.12	9.56	40.68	46.00	-5.32	Average
2	QP	0.520	37.23	9.56	46.79	56.00	-9.21	QP
3		0.675	22.40	9.83	32.23	46.00	-13.77	Average
4		0.675	28.59	9.83	38.42	56.00	-17.58	QP
5		1.190	20.95	9.53	30.48	46.00	-15.52	Average
6		1.190	25.92	9.53	35.45	56.00	-20.55	QP
7		1.465	21.17	9.52	30.69	46.00	-15.31	Average
8		1.465	26.63	9.52	36.15	56.00	-19.85	QP
9		1.895	19.24	9.52	28.76	46.00	-17.24	Average
10		1.895	25.11	9.52	34.63	56.00	-21.37	QP
11		2.365	17.63	9.56	27.19	46.00	-18.81	Average
12		2.365	24.19	9.56	33.75	56.00	-22.25	QP

Remark:

1. The following Quasi-Peak and Average measurements were performed on the EUT:
2. Final Test Level =Receiver Reading + LISN Factor + Cable Loss.
3. If the Peak value under Average limit, the Average value is not recorded in the report.

Neutral line:



	Freq	Read Level	Factor	Level	Limit Line	Over Limit	Remark	Pol/Phase
	MHz	dBuV	dB	dBuV	dBuV	dB		
1	0.285	23.26	9.50	32.76	50.67	-17.91	Average	Neutral
2	0.285	28.36	9.50	37.86	60.67	-22.81	QP	Neutral
3 PP	0.515	32.75	9.72	42.47	46.00	-3.53	Average	Neutral
4 QP	0.515	36.71	9.72	46.43	56.00	-9.57	QP	Neutral
5	0.665	24.19	9.87	34.06	46.00	-11.94	Average	Neutral
6	0.665	28.42	9.87	38.29	56.00	-17.71	QP	Neutral
7	1.125	22.48	9.71	32.19	46.00	-13.81	Average	Neutral
8	1.125	27.30	9.71	37.01	56.00	-18.99	QP	Neutral
9	1.495	21.37	9.72	31.09	46.00	-14.91	Average	Neutral
10	1.495	25.85	9.72	35.57	56.00	-20.43	QP	Neutral
11	2.000	20.23	9.75	29.98	46.00	-16.02	Average	Neutral
12	2.000	24.51	9.75	34.26	56.00	-21.74	QP	Neutral

Remark:

1. The following Quasi-Peak and Average measurements were performed on the EUT:
2. Final Test Level =Receiver Reading + LISN Factor + Cable Loss.
3. If the Peak value under Average limit, the Average value is not recorded in the report.

5.3 Radiated Emission

Test Requirement:	47 CFR Part 15C Section 15.249 and 15.209 and 15.205				
Test Method:	ANSI C63.10: 2013				
Test Site:	Measurement Distance: 3m (Semi-Anechoic Chamber)				
Receiver Setup:	Frequency	Detector	RBW	VBW	Remark
	0.009MHz-0.090MHz	Peak	10kHz	30KHz	Peak
	0.009MHz-0.090MHz	Average	10kHz	30KHz	Average
	0.090MHz-0.110MHz	Quasi-peak	10kHz	30KHz	Quasi-peak
	0.110MHz-0.490MHz	Peak	10kHz	30KHz	Peak
	0.110MHz-0.490MHz	Average	10kHz	30KHz	Average
	0.490MHz -30MHz	Quasi-peak	10kHz	30kHz	Quasi-peak
	30MHz-1GHz	Quasi-peak	100 kHz	300KHz	Quasi-peak
	Above 1GHz	Peak	1MHz	3MHz	Peak
		Peak	1MHz	10Hz	Average
Note: For fundamental frequency, RBW=5MHz, VBW=5MHz, Peak detector is for PK value, RMS detector is for Average value.					
Limit: (Spurious Emissions and band edge)	Frequency	Field strength (microvolt/meter)	Limit (dBuV/m)	Remark	Measurement distance (m)
	0.009MHz-0.490MHz	2400/F(kHz)	-	-	300
	0.490MHz-1.705MHz	24000/F(kHz)	-	-	30
	1.705MHz-30MHz	30	-	-	30
	30MHz-88MHz	100	40.0	Quasi-peak	3
	88MHz-216MHz	150	43.5	Quasi-peak	3
	216MHz-960MHz	200	46.0	Quasi-peak	3
	960MHz-1GHz	500	54.0	Quasi-peak	3
	Above 1GHz	500	54.0	Average	3
	Note: 1) 15.35(b), Unless otherwise specified, the limit on peak radio frequency emissions is 20dB above the maximum permitted average emission limit applicable to the equipment under test. This peak limit applies to the total peak emission level radiated by the device. 2) Emissions radiated outside of the specified frequency bands, except for harmonics, shall be attenuated by at least 50 dB below the level of the fundamental or to the general radiated emission limits in Section 15.209, whichever is the lesser attenuation.				
Limit: (Field strength of the fundamental signal)	Frequency	Limit (dBuV/m @3m)		Remark	
	5725MHz-5875MHz	94.0		Average Value	
		114.0		Peak Value	

Test Setup:

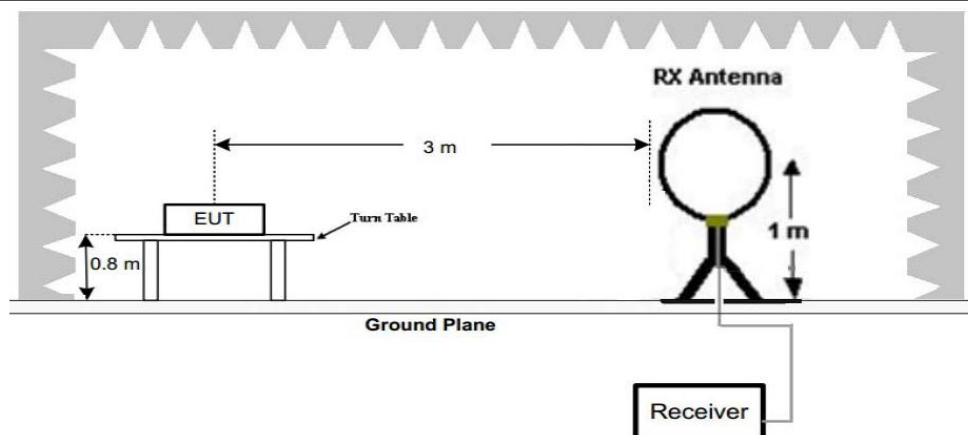


Figure 1. Below 30MHz

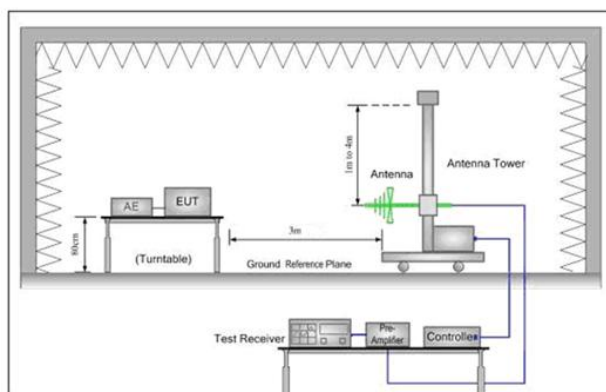


Figure 2. 30MHz to 1GHz

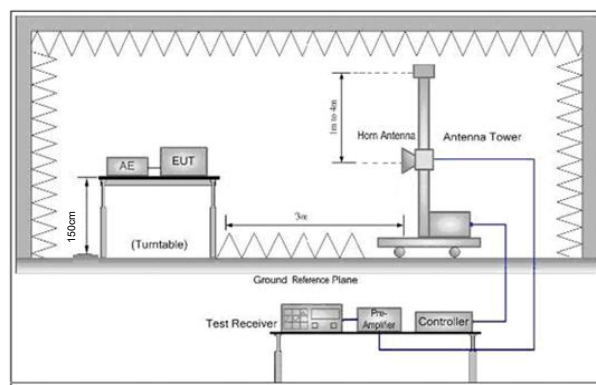


Figure 3. Above 1 GHz

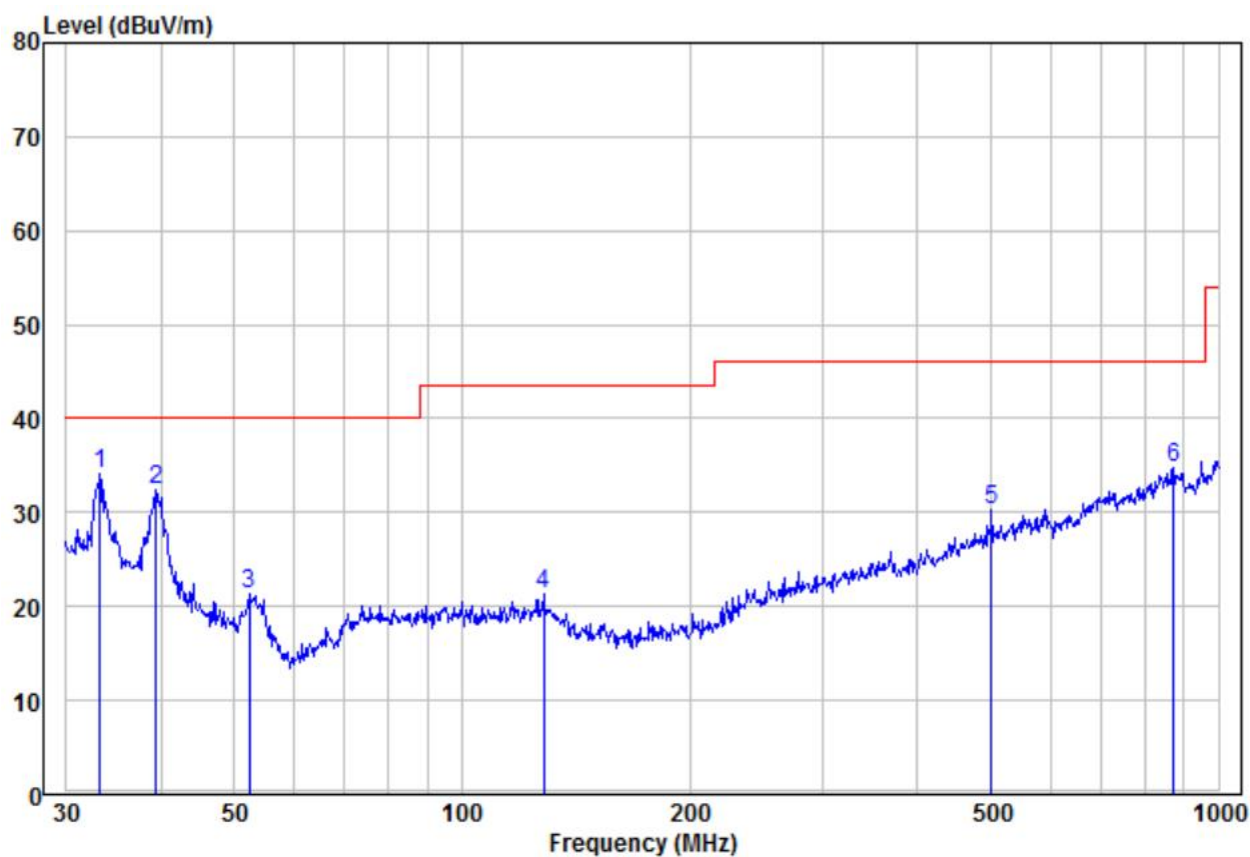
Test Procedure:

- a. 1) Below 1G: The EUT was placed on the top of a rotating table 0.8 meters above the ground at a 3 meter semi-anechoic chamber. The table was rotated 360 degrees to determine the position of the highest radiation.
 - 2) Above 1G: The EUT was placed on the top of a rotating table 1.5 meters above the ground at a 3 meter semi-anechoic chamber. The table was rotated 360 degrees to determine the position of the highest radiation.
- Note: For the radiated emission test above 1GHz:
Place the measurement antenna away from each area of the EUT determined to be a source of emissions at the specified measurement distance, while keeping the measurement antenna aimed at the source of emissions at each frequency of significant emissions, with polarization oriented for maximum response. The measurement antenna may have to be higher or lower than the EUT, depending on the radiation pattern of the emission and staying aimed at the emission source for receiving the maximum signal. The final measurement antenna elevation shall be that which maximizes the emissions. The measurement antenna elevation for maximum emissions shall be restricted to a range of heights of from 1 m to 4 m above the ground or reference ground plane.
- b. The EUT was set 3 meters away from the interference-receiving antenna, which was mounted on the top of a variable-height antenna tower.
 - c. The antenna height is varied from one meter to four meters above the ground to determine the maximum value of the field strength. Both horizontal and vertical polarizations of the antenna are set to make the measurement.
 - d. For each suspected emission, the EUT was arranged to its worst case and then the antenna was tuned to heights from 1 meter to 4 meters (for the test frequency of below 30MHz, the antenna was tuned to heights 1 meter) and the rotatable table

	<p>was turned from 0 degrees to 360 degrees to find the maximum reading.</p> <p>e. The test-receiver system was set to Peak Detect Function and Specified Bandwidth with Maximum Hold Mode.</p> <p>f. If the emission level of the EUT in peak mode was 10dB lower than the limit specified, then testing could be stopped and the peak values of the EUT would be reported. Otherwise the emissions that did not have 10dB margin would be re-tested one by one using peak, quasi-peak or average method as specified and then reported in a data sheet.</p> <p>g. Test the EUT in the lowest channel,the middle channel,the Highest channel</p> <p>h. The radiation measurements are performed in X, Y, Z axis positioning for Transmitting mode,And found the X axis positioning which it is worse case.</p> <p>i. Repeat above procedures until all frequencies measured was complete.</p>
Exploratory Test Mode:	Transmitting mode, Charge + Transmitting mode.
Final Test Mode:	<p>Pretest the EUT at Transmitting mode and Charge + Transmitting mode, found the Charge + Transmitting mode which it is worse case.</p> <p>For below 1GHz part, through pre-scan, the worst case is the lowest channel.</p> <p>Only the worst case is recorded in the report.</p>
Test Results:	Pass

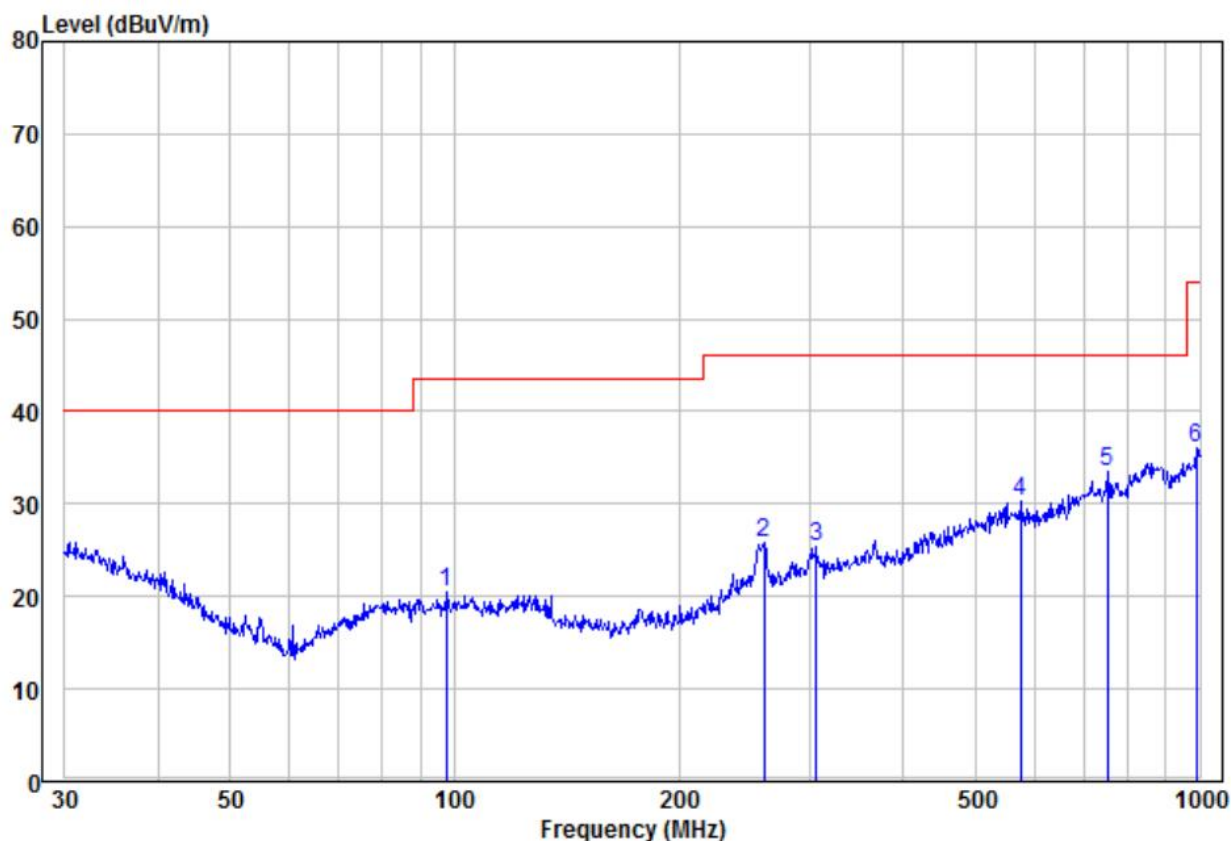
Measurement Data

30MHz~1GHz		
Test mode:	Transmitting	Vertical



		Read		Limit	Over		
	Freq	Level	Factor	Level	Line	Limit	Remark
	MHz	dBuV	dB/m	dBuV/m	dBuV/m	dB	Pol/Phase
1	pp	33.21	19.03	15.07	34.10	40.00	-5.90 Peak
2		39.44	19.35	13.00	32.35	40.00	-7.65 Peak
3		52.39	13.74	7.60	21.34	40.00	-18.66 Peak
4		128.11	10.95	10.40	21.35	43.50	-22.15 Peak
5		501.18	11.92	18.29	30.21	46.00	-15.79 Peak
6		872.18	10.91	23.96	34.87	46.00	-11.13 Peak

Test mode:	Transmitting	Horizontal
------------	--------------	------------



	Freq	Read Level	Factor	Level	Limit Line	Over Limit	Remark	Pol/Phase
	MHz	dBuV	dB/m	dBuV/m	dBuV/m	dB		
1	97.46	10.05	10.49	20.54	43.50	-22.96	Peak	HORIZONTAL
2	260.14	13.34	12.41	25.75	46.00	-20.25	Peak	HORIZONTAL
3	305.68	11.51	13.87	25.38	46.00	-20.62	Peak	HORIZONTAL
4	574.63	11.26	19.04	30.30	46.00	-15.70	Peak	HORIZONTAL
5 pp	752.74	11.64	21.95	33.59	46.00	-12.41	Peak	HORIZONTAL
6	989.54	11.10	24.85	35.95	54.00	-18.05	Peak	HORIZONTAL

Above 1GHz							
Test mode:		Transmitting		Test channel:		Lowest	
Frequency	Meter Reading	Factor	Emission Level	Limits	Over	Detector Type	Ant. Pol.
(MHz)	(dBμV)	(dB)	(dBμV/m)	(dBμV/m)	(dB)		H/V
5725	44.42	-2.77	41.65	74	-32.35	Peak	H
5725	45.61	-2.77	42.84	54	-11.16	AVG	H
5730	100.15	-2.74	97.41	114	-16.59	peak	H
5730	96.00	-2.74	93.26	94	-0.74	AVG	H
11460	55.86	6.84	62.70	74	-11.30	peak	H
11460	41.34	6.84	48.18	54	-5.82	AVG	H
17190	52.77	13.02	65.79	74	-8.21	peak	H
17190	36.20	13.02	49.22	54	-4.78	AVG	H
5725	45.82	-2.77	43.05	74	-30.95	peak	V
5725	43.90	-2.77	41.13	54	-12.87	AVG	V
5730	98.74	-2.74	96.00	114	-18.00	peak	V
5730	96.25	-2.74	93.51	94	-0.49	AVG	V
11460	56.11	6.84	62.95	74	-11.05	peak	V
11460	40.86	6.84	47.70	54	-6.30	AVG	V
17190	50.98	13.02	64.00	74	-10.00	peak	V
17190	37.39	13.02	50.41	54	-3.59	AVG	V

Test mode:		Transmitting		Test channel:		Middle	
Frequency	Meter Reading	Factor	Emission Level	Limits	Over	Detector Type	Ant. Pol.
(MHz)	(dBμV)	(dB)	(dBμV/m)	(dBμV/m)	(dB)		H/V
5780	96.65	-2.41	94.24	114	-19.76	peak	H
5780	91.67	-2.41	89.26	94	-4.74	AVG	H
11560	55.96	6.97	62.93	74	-11.07	peak	H
11560	43.10	6.97	50.07	54	-3.93	AVG	H
17340	50.91	15.71	66.62	74	-7.38	peak	H
17340	35.71	15.71	51.42	54	-2.58	AVG	H
5780	94.66	-2.41	92.25	114	-21.75	peak	V
5780	95.08	-2.41	92.67	94	-1.33	AVG	V
11560	55.64	6.97	62.61	74	-11.39	peak	V
11560	42.20	6.97	49.17	54	-4.83	AVG	V
17340	53.03	15.71	68.74	74	-5.26	peak	V
17340	37.36	15.71	53.07	54	-0.93	AVG	V

Test mode:		Transmitting		Test channel:		Highest	
Frequency	Meter Reading	Factor	Emission Level	Limits	Over	Detector Type	Ant. Pol.
(MHz)	(dBμV)	(dB)	(dBμV/m)	(dBμV/m)	(dB)		H/V
5845	99.24	-2.31	96.93	114	-17.07	peak	H
5845	95.81	-2.31	93.50	94	-0.50	AVG	H
5785	61.76	-2.21	59.55	74	-14.45	Peak	H
5785	45.44	-2.21	43.23	54	-10.77	AVG	H
11690	57.00	6.63	63.63	74	-10.37	peak	H
11690	43.38	6.63	50.01	54	-3.99	AVG	H
17535	51.00	16.05	67.05	74	-6.95	peak	H
17535	36.19	16.05	52.24	54	-1.76	AVG	H
5845	97.15	-2.31	94.84	114	-19.16	peak	V
5845	92.89	-2.31	90.58	94	-3.42	AVG	V
5785	61.87	-2.21	59.66	74	-14.34	peak	V
5785	44.04	-2.21	41.83	54	-12.17	AVG	V
11690	56.05	6.63	62.68	74	-11.32	peak	V
11690	41.75	6.63	48.38	54	-5.62	AVG	V
17535	52.01	16.05	68.06	74	-5.94	peak	V
17535	37.76	16.05	53.81	54	-0.19	AVG	V

Remark:

- 1) The field strength is calculated by adding the Antenna Factor, Cable Factor & Preamplifier. The basic equation with a sample calculation is as follows:
Final Test Level = Receiver Reading + Antenna Factor + Cable Factor – Preamplifier Factor
- 2) Scan from 9kHz to 25GHz, The disturbance above 10GHz and below 30MHz was very low, and the above harmonics were the highest point could be found when testing, so only the above harmonics had been displayed. The amplitude of spurious emissions from the radiator which are attenuated more than 20dB below the limit need not be reported .

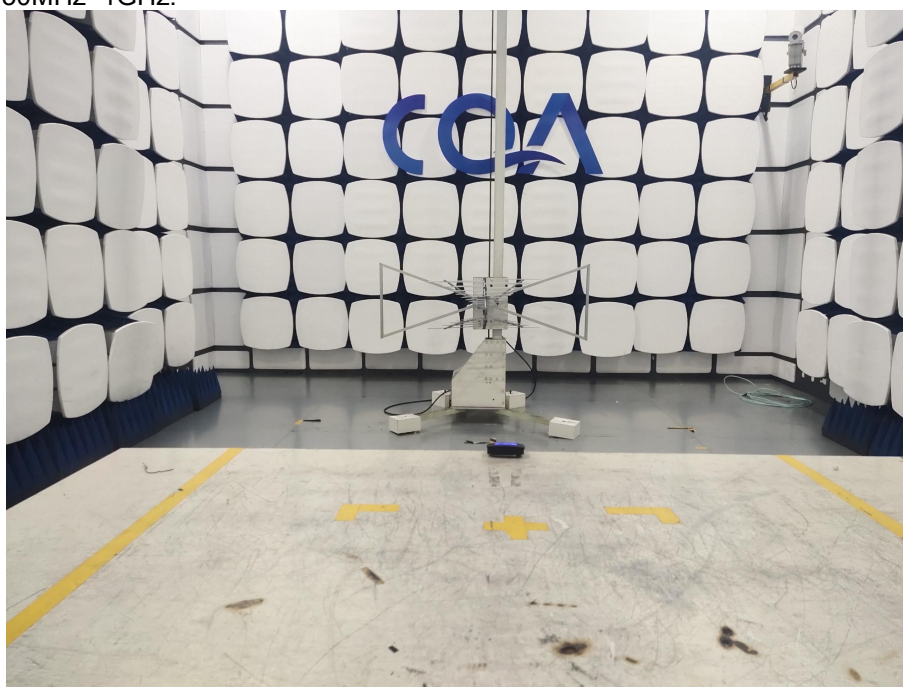
6 Photographs

6.1 Radiated Emission Test Setup

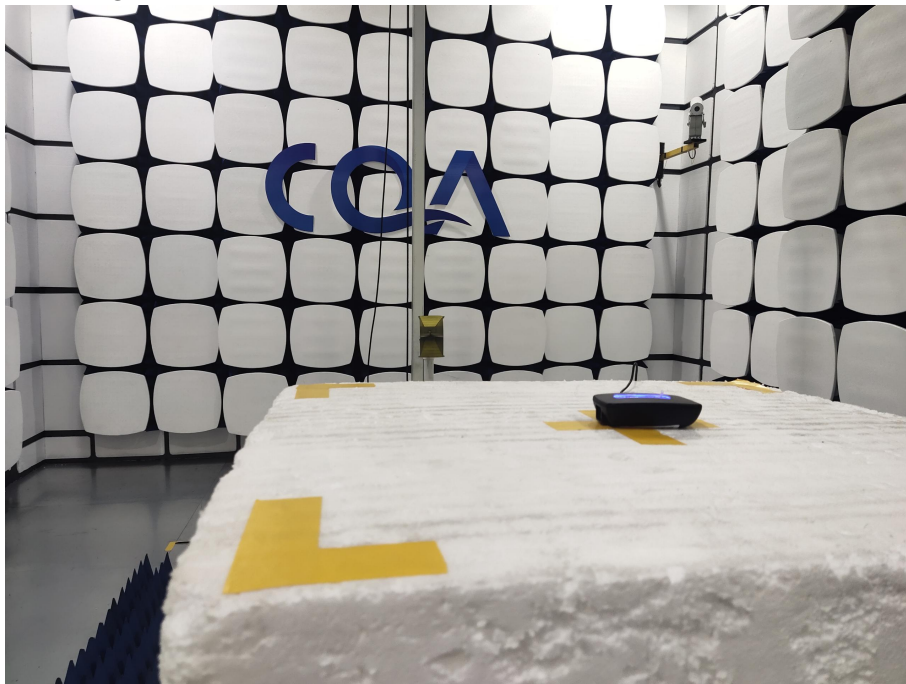
9kHz~30MHz



30MHz~1GHz:



Above 1GHz:



6.2 Conducted Emission Test Setup



6.3 EUT Constructional Details

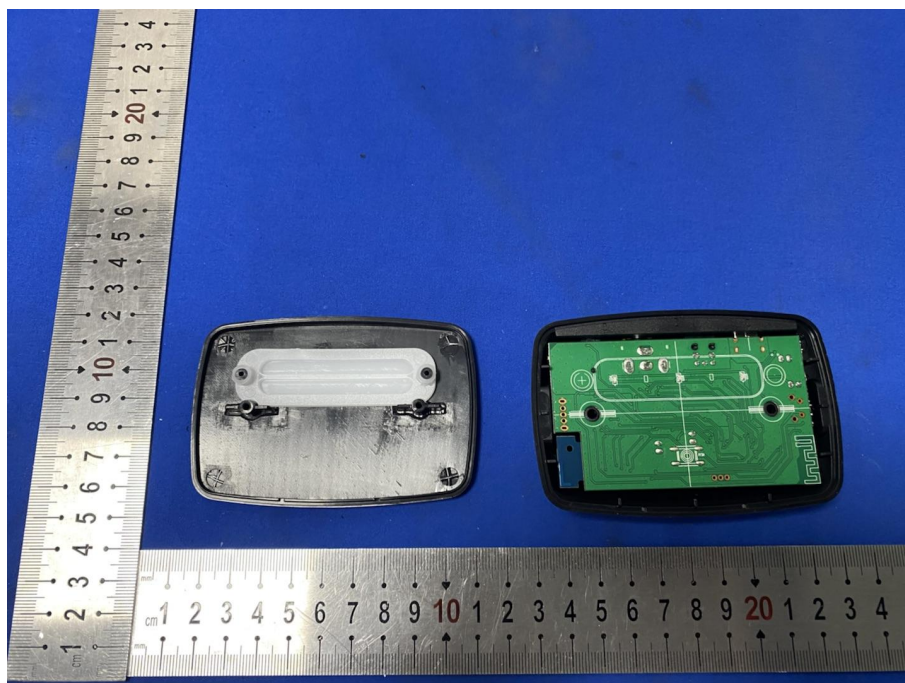


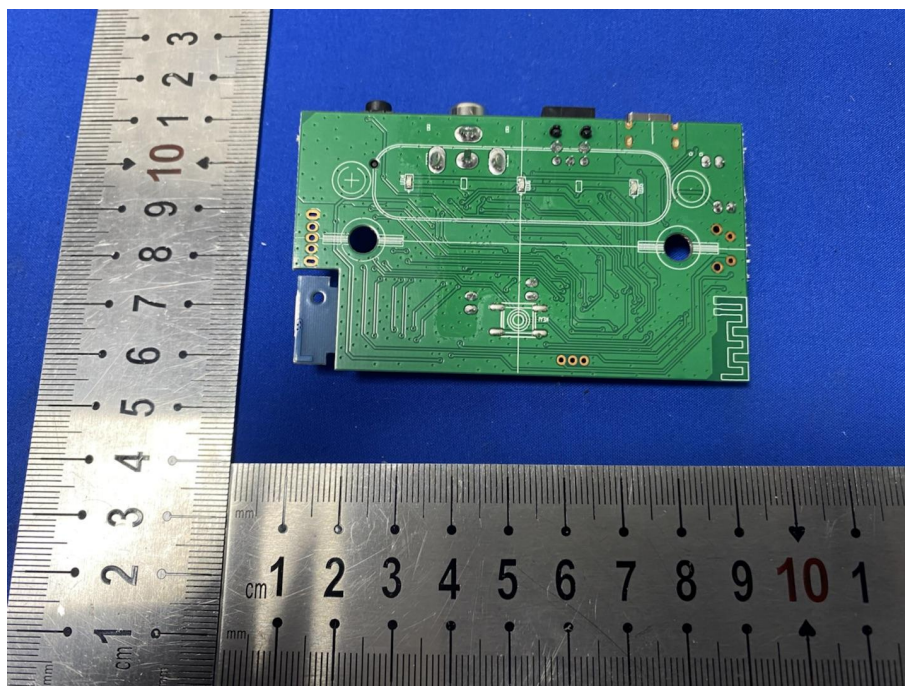
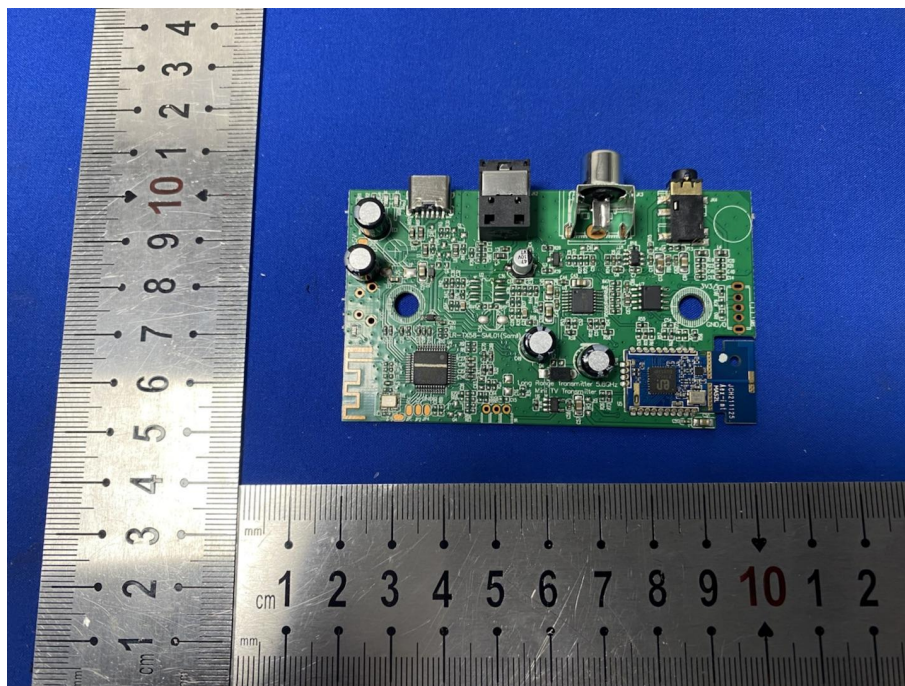
1#











2#

